



Vicinity™ Workstation Screens

- Vicinity™ Workstation Screens Haven, in Parthenon



Solace in open-plan spaces

Vicinity™ is a fully customisable workstation screen system that enhances physical and acoustic privacy, creating a sanctuary for productive work.

Available in a range of different mounting options, Vicinity can be used with the Vicinity Workstation Clamps—made from 100% recycled PET from in-house textile waste—or integrated into your own setup for ultimate flexibility.

Customisation options for Vicinity include style, width, height, colour, and corner details, all of which create a tailored experience for every user.

To find out more about Vicinity Workstation Screens visit autexacoustics.com.au



Reimagining waste

Our planet has a growing problem with waste, and with 45-50% of total waste going to landfills coming from construction and demolition, there is an incredible opportunity for positive change. Vicinity Workstation Screens explores this opportunity by recycling in-house waste through a new process we pioneered called RePET. This allows us to create products that have a completely circular lifecycle.

Through the RePET process, we have been able to remanufacture over 160,000 kgs* of waste into raw materials that can be made into new components like our Vicinity Workstation Clamps.

*Data calculated as of December 2024 and subject to future updates.

Vicinity™ Workstation Clamps

The new Vicinity Workstation Clamp is made from 100% recycled PET through a unique and industry-first pelletising process called RePET. This process transforms in-house waste into pellets, which are injection-moulded to make more clamps and product components.

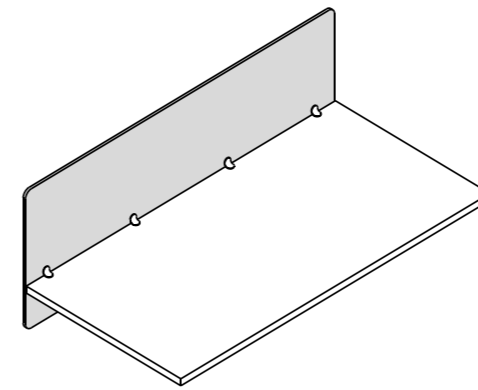
And, because the Vicinity screens and clamps are made from 100% PET, they can be easily disassembled from the fixing screws and recycled through the RePET process again and again, creating a truly circular lifecycle.

Vicinity Workstation Clamp design registration
NZ DES 425911 | NZ DES 425912 | US DES D1005095S | AU DES 201915344
AU DES 201917046 | AU DES 201915344 | EU DES 006978144-0001

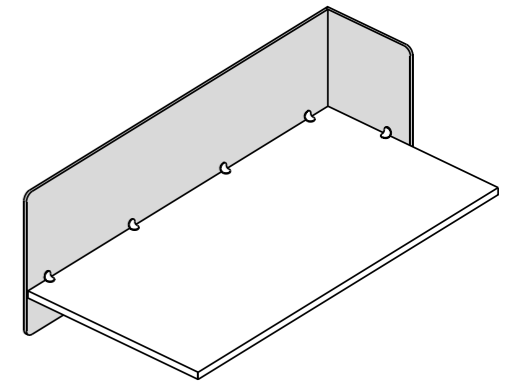


Screen style options

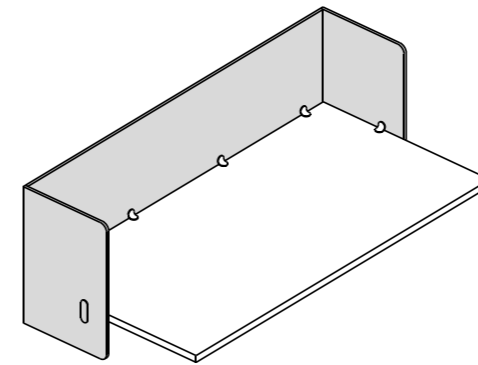
Choose from our range of screen style options.



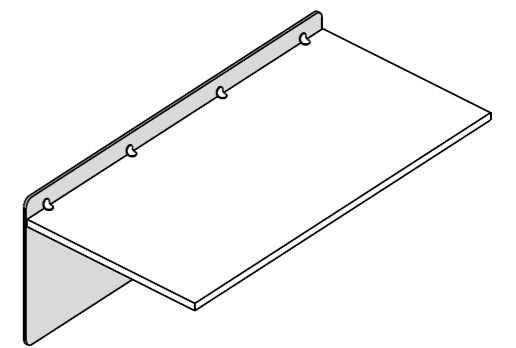
Hedge



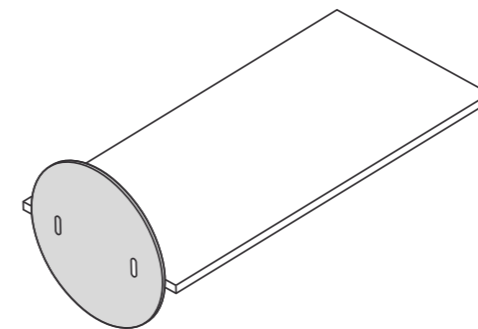
Haven



Nook



Modesty



Sol



Colour options

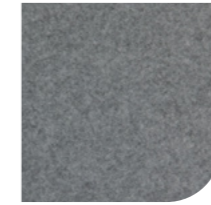
Choose from our range of Cube colours.



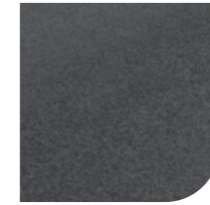
Pavilion



Savoye



Flatiron



Herald



Empire



Petronas



Opera



Parthenon



Pinnacle



Caspian



Muralla



Falling Water



Acros



Gherkin



Tree House



Highland



Beehive



Senado



Canyon



Sargazo



Terrace

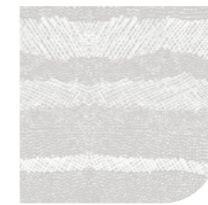


Cavalier



Willie Weston coloured core

Uniting contemporary First Nations design and acoustic functionality, the Autex Acoustics x Willie Weston workstations collection, printed on coloured Cube, has been curated for commercial, education, and government spaces.



Jilamara
Savoye



Jilamara
Opera



Wak Wak
Parthenon



Oneness
Parthenon



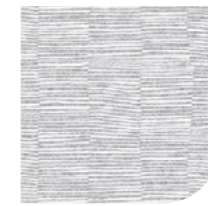
Oneness
Muralla



Oneness
Gherkin



Renewed
Savoye



Renewed
Flatiron



Renewed
Canyon



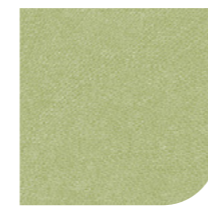
Syaw
Beehive



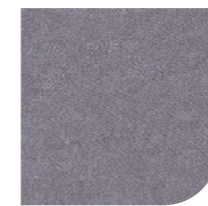
Syaw
Canyon



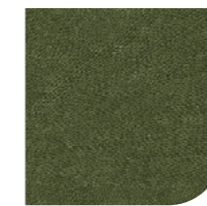
Syaw
Falling Water



Native Seeds
Acros



Native Seeds
Cavalier

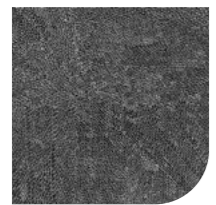


Native Seeds
Gherkin

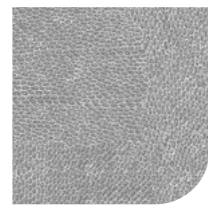
The above Willie Weston designs are available up to 3 m and are printed double-sided. The coloured core panel edge will be exposed.

Willie Weston white core

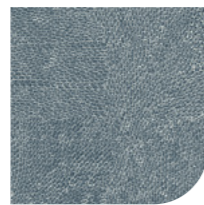
Explore more designs from the Autex Acoustics x Willie Weston collection for your desk screens. A beautiful blend of First Nations design and acoustic performance for any work environment. Please note that as a standard print option, the following designs will not feature a coloured Cube core.



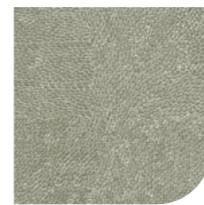
Native Seeds
'Midnight'



Native Seeds
'Cassia'



Native Seeds
'Mineral'



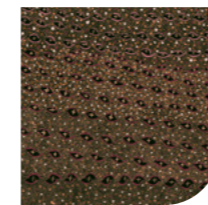
Native Seeds
'Olive'



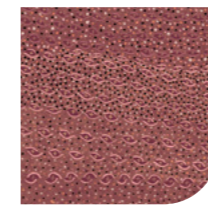
Sugarbag Dreaming
'Ghost Gum'



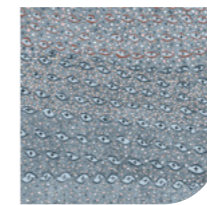
Sugarbag Dreaming
'Saltbush'



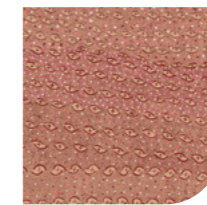
Durrmu (KK)
'Obsidian'



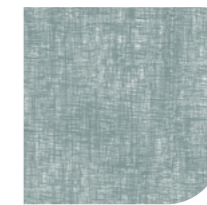
Durrmu (KK)
'Berry'



Durrmu (KK)
'Pippi'



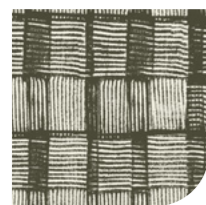
Durrmu (KK)
'Terra'



Syaw (Fish Net)
'Sea Spray'



Syaw (Fish Net)
'Woollybutt'



Water Levels
'Moss'



Water Levels
'Marine'



Pandanus
'Stone'



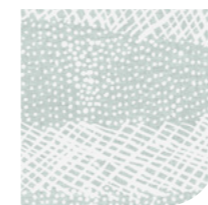
Pandanus
'Eucalypt'



Wak Wak
'Mud Flats'



Wak Wak
'Storm'



Jilamara
'Inlet'



Jilamara
'Stone'



Jilamara
'Sand'



Oneness
'Lichen'



Oneness
'Heath'



Oneness
'Tussock'



Oneness
'Plum'



Renewed
'Grevillea'



Renewed
'Pearl'



Renewed
'Pebble'



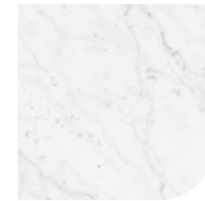
Renewed
'Wild Violet'

The standard Willie Weston designs are available up to 3 m and are printed double-sided on Cube Pavilion. The white core panel edge will be exposed.

Surface Finishes

Choose from our range of Surface Finishes options.

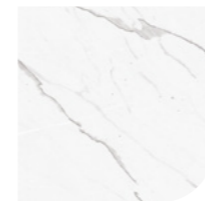
Stone Finishes



Carrara



Travertine



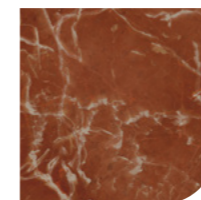
Statuario



San Pedro



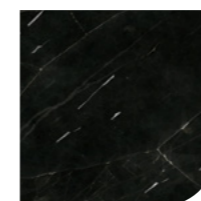
Statuario Rose



Rojo Alicante

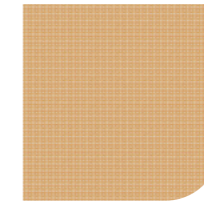


Empress Green



Fossena

Texture Finishes



Rattan



Cork



Weave



Canvas



Grey Stucco



Concrete

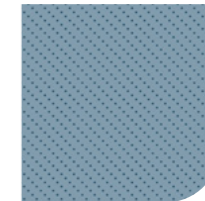


Beige Stucco



Oxide

Pattern Finishes



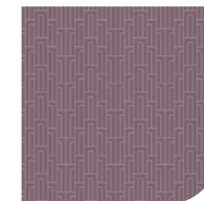
Dots



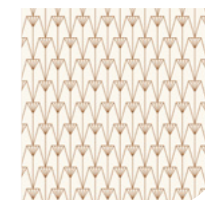
Tessellate



Arches



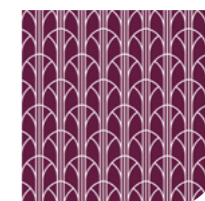
Ziggurat



Palms



Flax



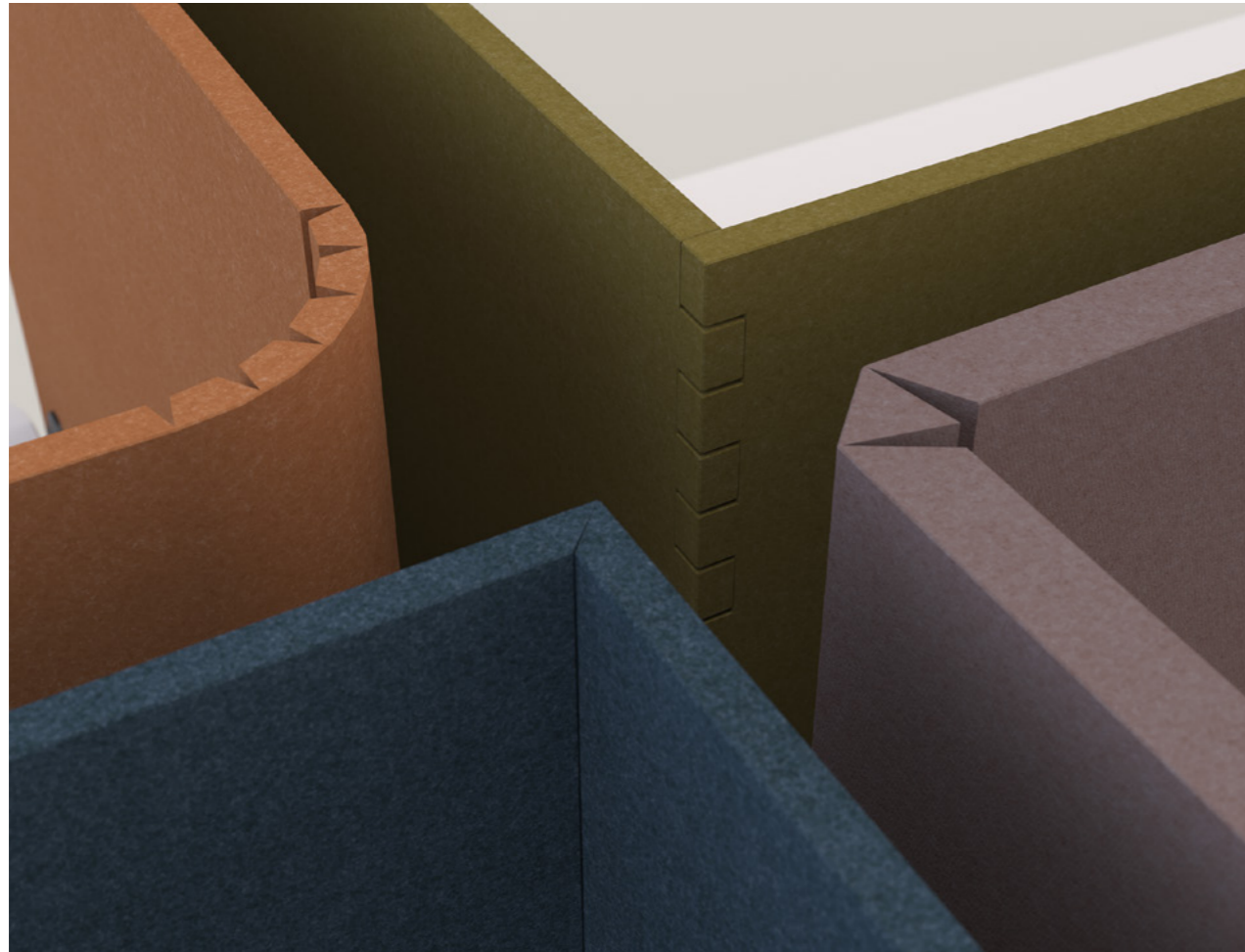
Columns



Leaves

Surface Finishes are available up to 3 m and are printed double-sided. The white core panel edge will be exposed.





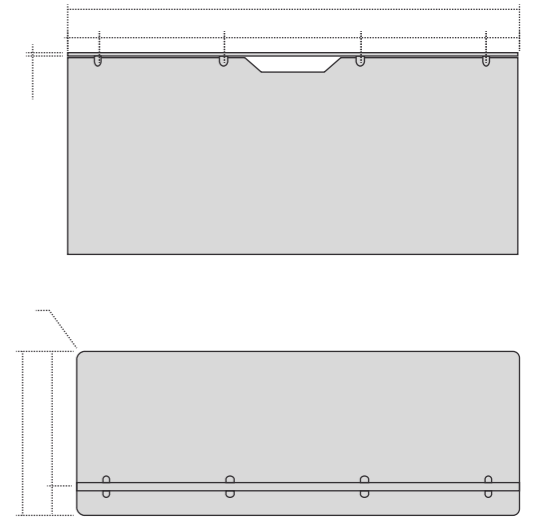
Customise

Choose panel dimensions and details to suit your project.

- Thickness (12 mm, 24 mm)
- Width/height
- Above/below desk dimensions
- Radius corner detail

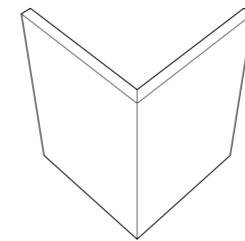
Base panel sizes are available in a range of dimensions with custom offerings up to 3600 mm x 1200 mm.

Savoye, Flatiron, Empire, Opera, Gherkin and Muralla are also available in 1540 mm x 920 mm, 1840 mm x 920 mm, 2440 mm x 920 mm.

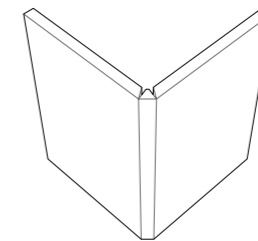


Corner treatment

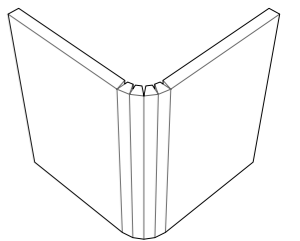
Choose from our range of corner options.



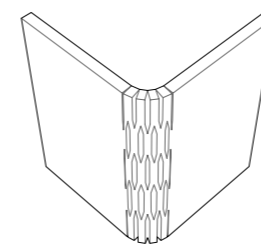
Standard mitre (12 mm)



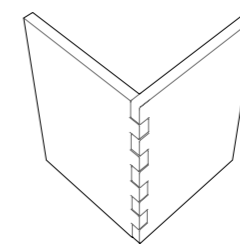
Double mitre (24 mm)



Groove radius



Kerf radius

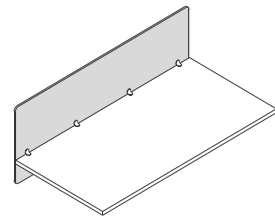


Comb join

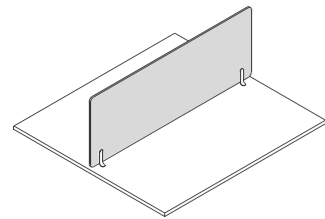
How to specify

Vicinity Workstation Screens are designed with different configurations in mind, so you can modify and specify to suit your project requirements.

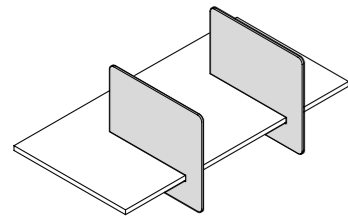
Mounting style



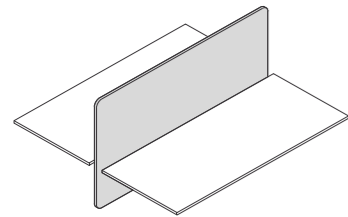
Desk mount



Top mount

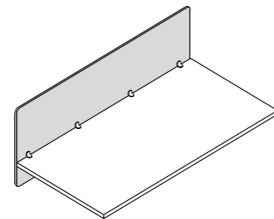


Front mount

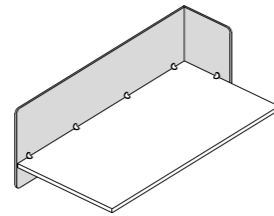


Beam mount

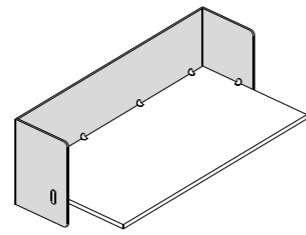
Screen style



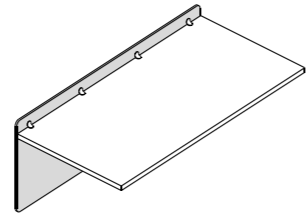
Hedge



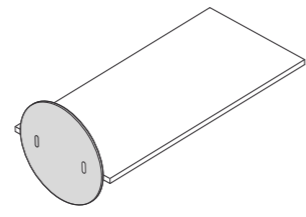
Haven



Nook



Modesty



Sol

All standard styles can be customised to your needs.

See 'Customise' options, and contact your Autex Acoustics specifications manager for more information.

Colour/finish



Cube (base product colour)



Willie Weston



Surface Finishes

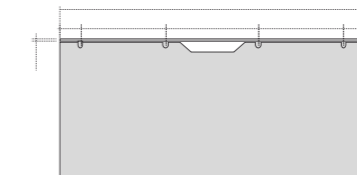


Vicinity Workstation Clamps

Please note that Vicinity Workstations clamps are only suitable for Desk mount options (Vicinity Workstation Screens). For all other mounting methods, please contact your Autex Acoustics specification manager.

Customise dimensions

- Thickness (12 mm, 24 mm)
- Width/height
- Above/below desk dimensions
- Radius corner detail

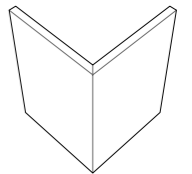


Base panel sizes are available in a range of dimensions with custom offerings up to 3600 mm x 1200 mm.

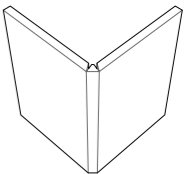
Savoye, Flatiron, Empire, Opera, Gherkin and Muralla are also available in 1540 mm x 920 mm, 1840 mm x 920 mm, 2440 mm x 920 mm.

For any other surface detailing treatments, such as grooving, please contact your Autex Acoustics specifications manager to assist with custom capabilities.

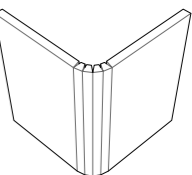
Corner fold treatment



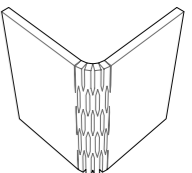
Standard mitre (12 mm)



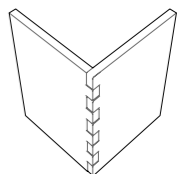
Double mitre (24 mm)



Groove radius

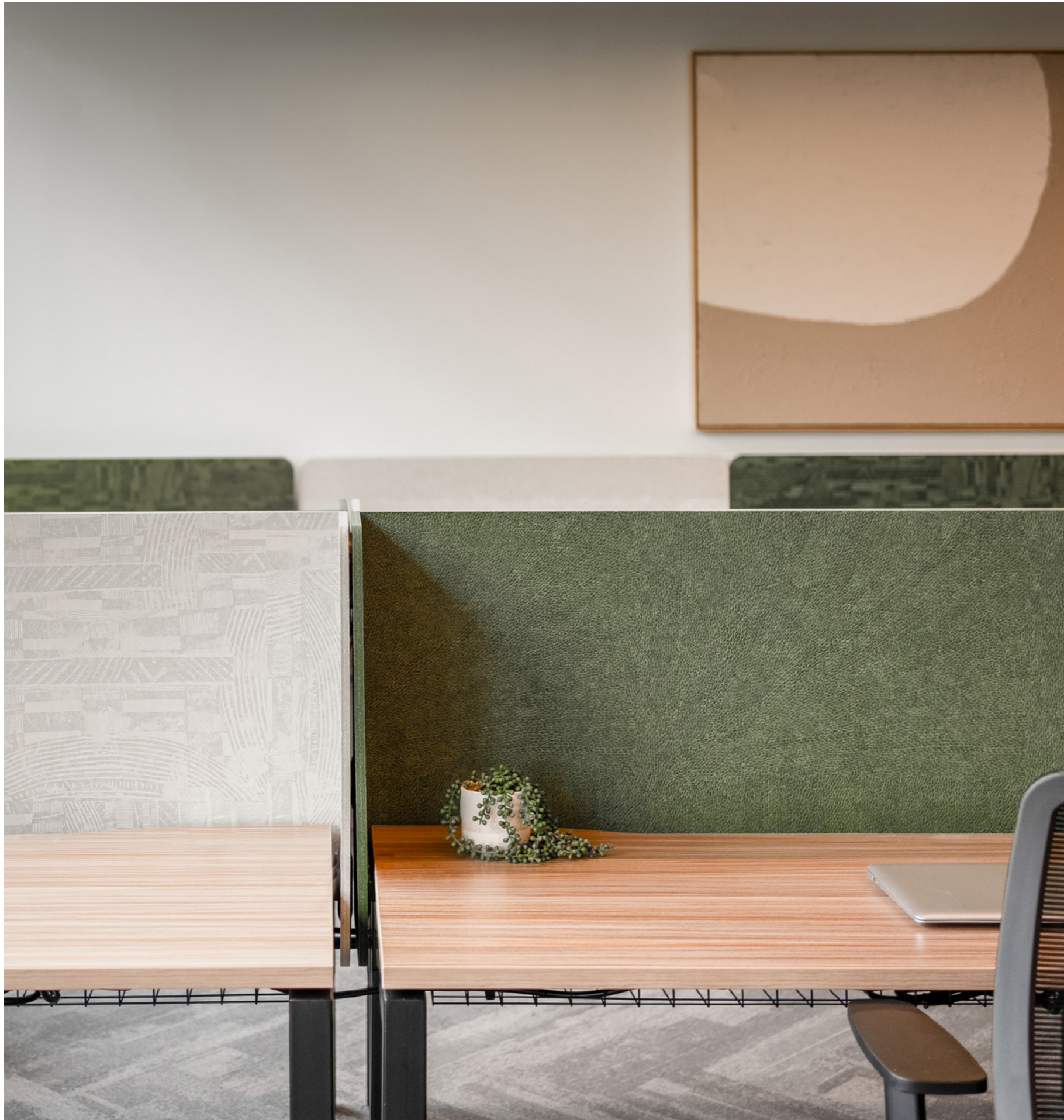


Kerf radius



Comb join

We offer broader workstation solutions for various mounting methods. Please contact your Autex Acoustics specification manager for more information.



Features and benefits

- Delivers excellent acoustic performance
- Highly customisable with a range of options for style, colour, dimensions and corner details
- Additional customisation options available include Surface Finishes, Groove™, and Mirage™
- Solid colour and smooth finish, no capping required
- Innovative mounting clamps made from 100% recycled PET*
- Screen are made from 100% PET with a minimum of 80% recycled content
- Easy to install and move when needed
- Low VOC—beneficial for IEQ
- Highly durable, assuring long-term stability and performance
- Pinnable surface
- Custom dimension screens to optimise costs
- Carbon neutral product
- Made in Australia

Applications

- Suitable for a variety of workspaces, including: commercial and home offices, classrooms, and libraries

*Stated recycled content is for clamp components only and does not include fasteners

Customisation

As creators and innovators, we understand your pursuit of the bold and unusual, the rare and exceptional—the brave, colour-outside-the-lines ideas. Every space you design is unique, therefore, every element—from floor to ceiling—should be tailored to fit.

Entirely customisable, we embrace an end-to-end collaborative design approach to bring your workstation vision to life. Every screen is made to order with the benefit of custom length panels—fitting your project brief while minimising waste—and design flexibility.

If your project requires customised screens, please contact your Autex Acoustics specification manager.





We are proud to be a carbon neutral organisation

We have reduced and balanced all carbon emissions from our business operations, including manufacturing to zero.

We offer entirely carbon neutral products

All our products are carbon neutral with emissions offset through certified carbon credits.

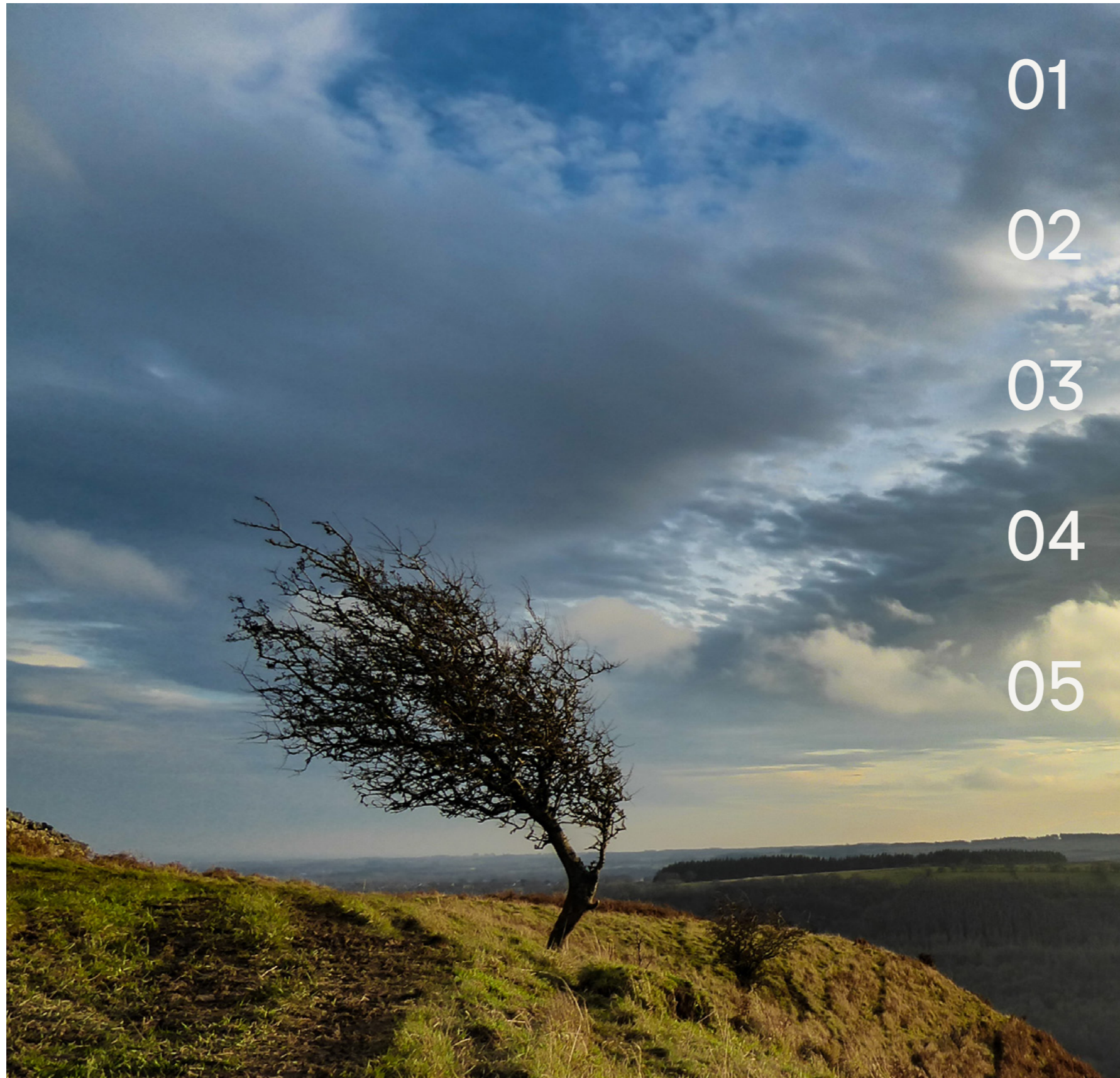
0 kg

CO₂-e per kg of product



Sustainability pillars

The five pillars of our sustainability strategy define all aspects of our operations and the products we offer.



01



Climate change demands climate action We are carbon neutral in everything we do.

02



Closing the loop We are advocates for closing the loop on waste. We design with circularity front of mind.

03



Sustainable supply chain We carefully select responsible suppliers and take action to mitigate unethical practices, and encourage good working conditions.

04



Supporting wellbeing in buildings All our products are made using only safe materials. No harmful chemicals are present in our products.

05



Operating a business for purpose and profit We strive to have a positive impact on our environment, our people, and the next generation.

In everything we do



Our journey to carbon neutrality

1967 1990 2012 2017 2020 2021 2022

Founded in Auckland, NZ, creating underfelt for the flooring industry

Established on-line recycling

Reclaimed waste trimmings, **reducing raw material use and associated emissions**

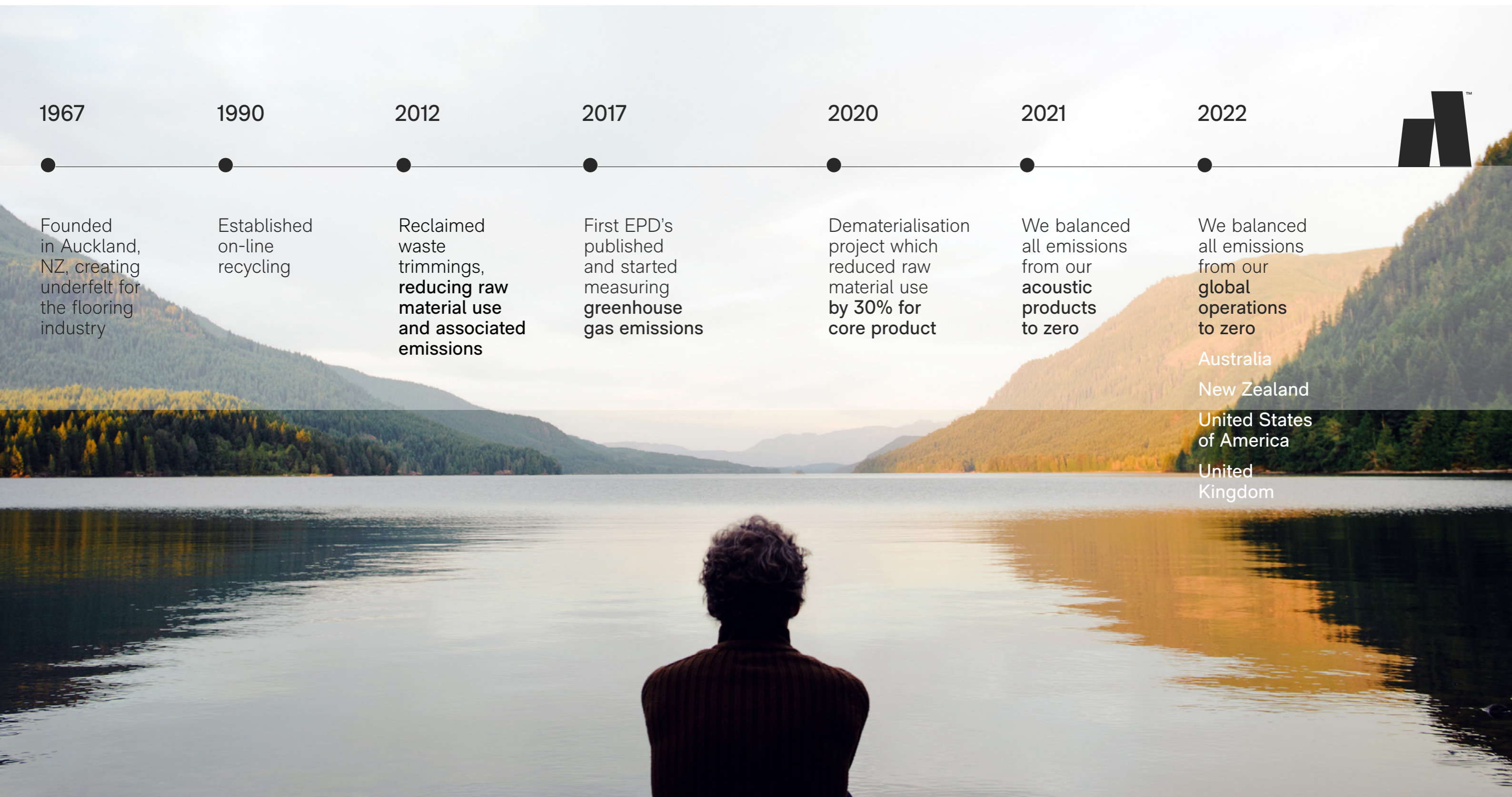
First EPD's published and started measuring **greenhouse gas emissions**

Dematerialisation project which reduced raw material use **by 30% for core product**

We balanced all emissions from our **acoustic products to zero**

We balanced all emissions from our **global operations to zero**

- Australia
- New Zealand
- United States of America
- United Kingdom



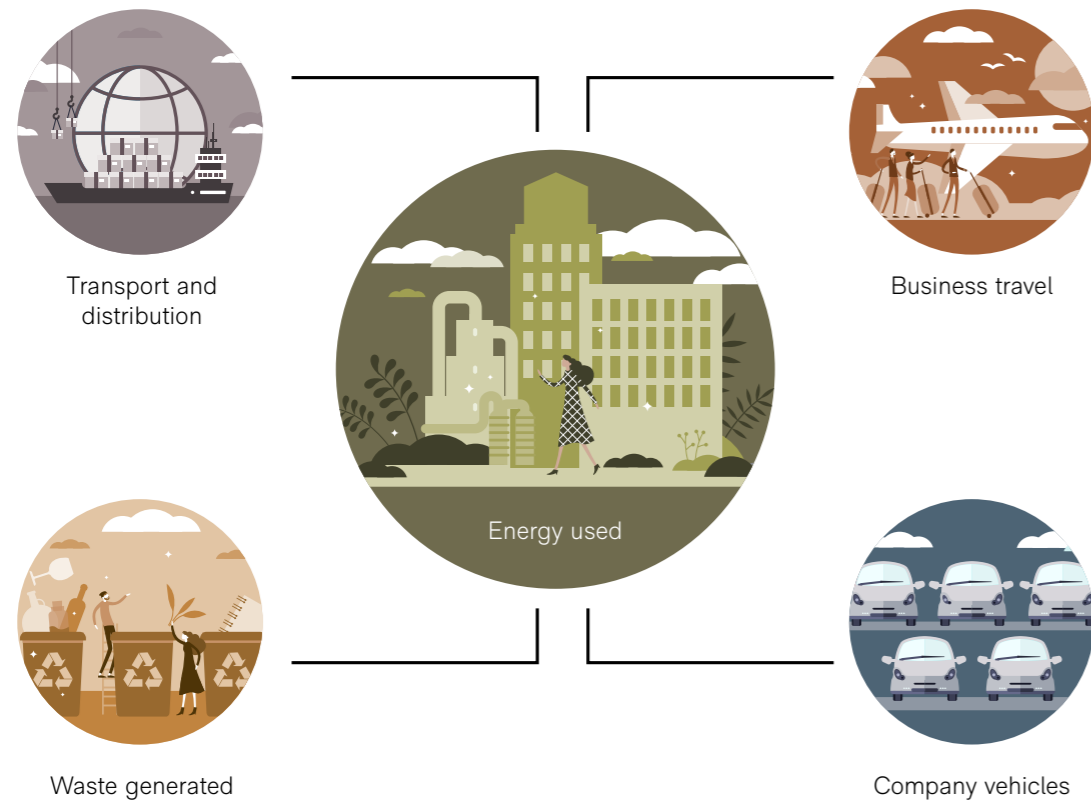
How we're fighting climate change

The climate crisis is the biggest issue of our generation. As a product designer and manufacturer, we have an opportunity to help improve the carbon impact of our industry.

Our operational carbon emissions

We are a carbon neutral business. We actively monitor the carbon emissions of our entire operation to better understand our carbon footprint and how we can further reduce emissions. We have an internal strategy to reduce our carbon emissions and have successfully delivered a number of carbon reduction initiatives within our operations. Any carbon emissions that are currently unavoidable are offset through certified carbon credits. We have a commitment to purchase only verified carbon credits that are retired on robust registers to ensure we are driving positive change.

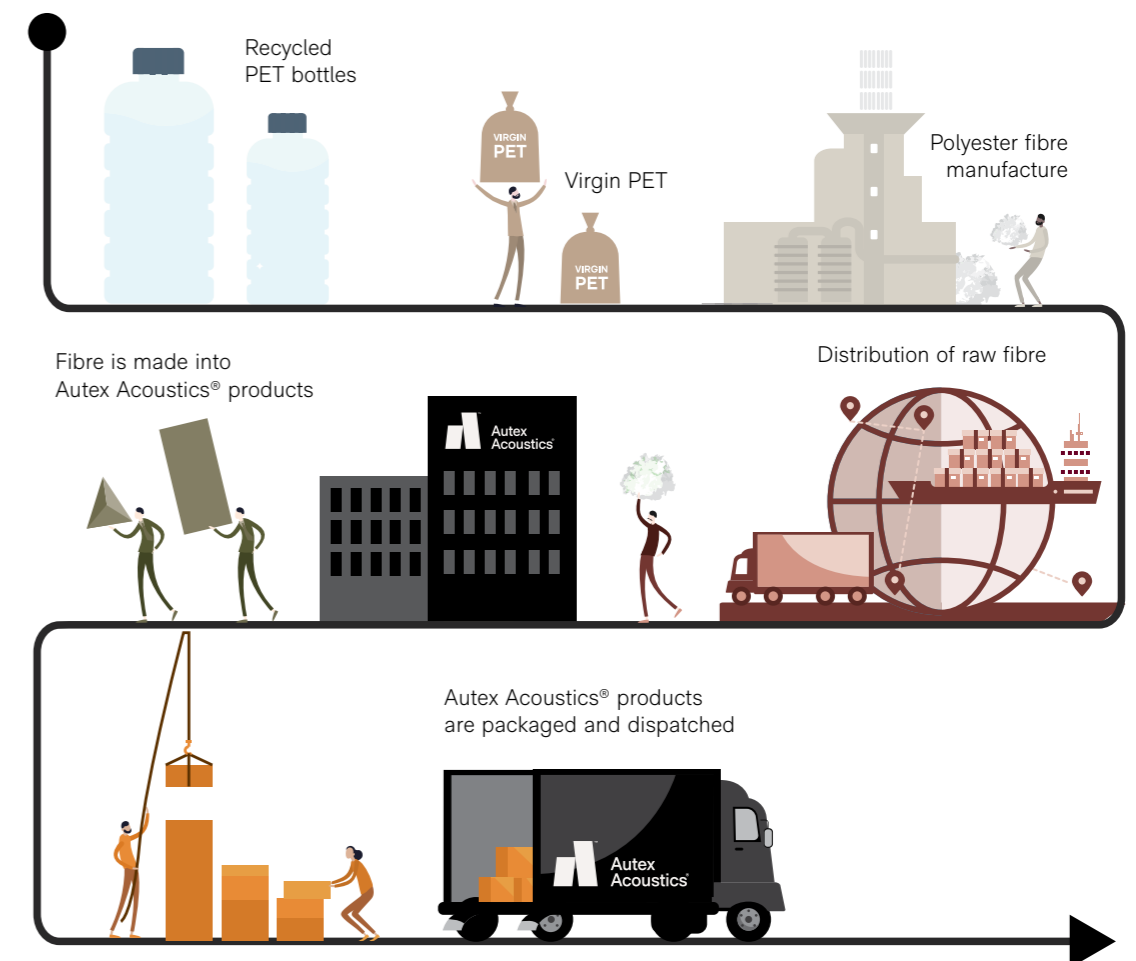
Key business activities contributing to our operational emissions



Embodied carbon of our products

Our products are carbon neutral, and we are the first business in our industry to include the cost of carbon in our products. We consider this an investment in present and future generations, and simply a cost of doing business. We calculate the embodied carbon of our products, from the raw material to the manufacturing gate, using industry recognised ISO standards. We have reduced the carbon footprint of our products through smart design and efficient manufacturing. While the embodied carbon of our products is low, they still do have a carbon impact. We mitigate this through our Carbon Neutral Product Initiative by offsetting the equivalent emissions using certified carbon credits. These carbon credits are generated from projects focused on renewable energy, fuel switching, and reforestation around the world.

Key activities contributing to the embodied carbon of our products





Credentials

Certifying your green building

Autex Acoustics products meet criteria for NABERS, WELL, LEED, Green Star, and BREEAM building rating systems, helping you achieve certification for your project. For support and guidance on available rating system points, please visit autexglobal.com, or speak with your Autex Acoustics account manager.



Environmental Product Declaration

An Environmental Product Declaration (EPD) is a document that communicates information about the life-cycle environmental impact of a product, including embodied carbon. Our EPDs are created and verified in accordance with ISO 14025 and EN 15804, used for construction products and services.



GreenRate – Level A

GreenRate is a multi-attribute environmental certification that scores products on a range of environmental, health, and social measures. Autex Acoustics products are certified to achieve GreenRate Level A. Level A is the highest GreenRate level and demonstrates the highest level of product sustainability.



Declare – International Living Future Institute

The ingredients in our products have been reviewed against the Living Future Challenge Red List and achieve a Third-Party Verified 'Red List Free' status.



Products achieve the highest 'LBC Red List Free' status when:

- Ingredients are 100% disclosed and are not found in the Red List
- Products are shown to meet VOC emissions limits

We assure the accuracy of our certifications by having our Declare labels independently verified by a third party expert.



Health Product Declaration

A Health Product Declaration (HPD) is a document that reports the ingredients of a product and the health effects associated with these ingredients. A Health Product Declaration has been generated for each of our products.



CDPH Standard

CDPH Standard Method (CA Section 01350) is a widely used standard to evaluate building products for low volatile organic chemicals (VOC) and formaldehyde emissions. All Autex Acoustics products meet the limits set by CDPH and the LEED building rating scheme.



ISO Certifications

ISO 14001 – Environmental Management

Autex Acoustics manufactures under environmental management processes that are ISO certified. This certification gives assurance that we manage any environmental impacts within our operations.



ISO 9001 – Quality Management

Autex Acoustics has a strict quality management system that is ISO certified. Robust quality processes from raw material through to product release help ensure our products meet expectations.



ISO 45001 – Health and Safety Management

Autex Acoustics manufacturing operations have an ISO 45001 certified Health and Safety Management System to ensure the safety and wellbeing of our people.



In everything we do

● **New Zealand**

702-718 Rosebank Road,
Private Bag 19988
Avondale 1746, Auckland
T 0800 428 839
T +64 9 828 9179
autexacoustics.co.nz

● **Australia**

285 Swan Street,
Richmond, VIC 3121
T 1800 678 160
T +61 3 9450 6700
autexacoustics.com.au

● **United Kingdom**

Unit J4, Lowfields Way,
Lowfields Business Park,
Elland, West Yorkshire
HX5 9DA
T +44 0 142 241 8899
autexacoustics.co.uk

● **United States**

1630 Dan Kipper Drive,
Riverside, CA 92507
T +1 424 203 1813
autexacoustics.com

Autex is an ISO certified organisation encompassing Quality (ISO 9001), Environmental (ISO 14001), and Health and Safety (ISO 45001). Brand names and logos are registered or unregistered trademark: owned or used under license by Autex Industries Limited or other members of the Autex Group. © Copyright 2024 Autex Industries Ltd. All rights reserved. It is the user's responsibility to determine if the product and information presented in this document is suitable for the intended application by engaging a suitably qualified consultant. The information contained in this document is correct to the best of our knowledge at the date of its publication. To verify that this document is the most current publication please check our website or contact your Autex Acoustics account manager.