



Lanes™

● Lanes™ Peak in Surface Finishes, Carrara

● Autex Acoustics™, New Zealand



Sophisticated design meets powerful acoustics

Add a feature to any space with Lanes™, a battened style acoustic system made from Cube™. Through the creation of 3D interior façades, an air gap is created behind each lane providing enhanced low frequency sound absorption.

On top of this, Lanes boasts a Group 1-S fire classification and is a carbon neutral acoustic product. This blend of true functionality and simply elegant design make this range suitable for a wide variety of spaces.

Available in three styles: Peak, Plane, and Sawtooth.



The power of Lanes lies not in just the beautiful lines and shapes it creates, but in the acoustic performance it provides. Most interior acoustic solutions are adhered flat against a wall creating an alternative surface for sound to be absorbed. The way that Lanes are installed creates an air gap behind each lane providing enhanced low frequency absorption. To ensure the Lanes stay attached to the wall a clipping system is used, meaning that there is no need for glue in the installation process.

Features and benefits:

- Designed for easy disassembly as no adhesive is needed
- Suitable for wall applications
- Air gap enhances the acoustic performance
- Beautifully folded joints
- Group 1-S fire classification
- Modular scalable wall design
- Locally made
- Carbon neutral product

Applications:

- Decorative and functional acoustic treatment for interior spaces
- Commercial/office spaces, education, hospitality, theatres and auditoriums, recording studios, and retail
- Battened wall installations



Acoustic Timber™ finishes

Bringing tones and textures traditionally found in our natural environment indoors, is a powerful way to add character to any space. While being visually impactful, the presence of these designs can help to improve occupants comfortability, engagement, and help to promote creativity.

The use of timber grains can have varying impacts depending on the specific grain used. Whether you are looking to have a cool calming affect or create a deep warmth, there is a grain here fit for your next project.



Birch



Hoop Pine



Oak



American Ash



Eucalyptus



Tasmanian Oak



Blue Gum



Tasmanian Blackwood



Queensland Walnut



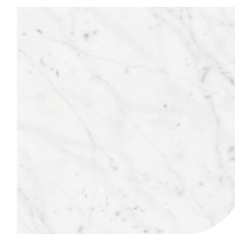
Jarrah



Stone finishes

Bringing tones and textures traditionally found in our natural environment indoors, is a powerful way to add character to any space. While being visually impactful, the presence of these designs can help to improve occupants comfortability, engagement, and help to promote creativity.

The use of stone can have varying impacts depending on the specific texture used. Whether you are looking to bring a touch of elegance or bring a sense of serene relaxation, there is a design here fit for your next project.



Carrara



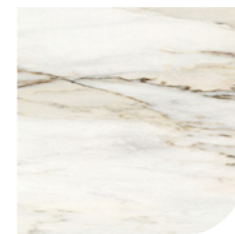
Travertine



Statuario



San Pedro



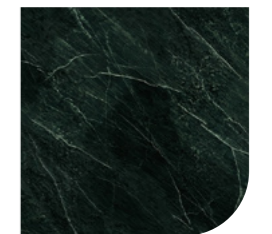
Statuario Rose



Rojo Alicante



Fossena



Empress Green

To see full range of Surface Finishes including Texture and Pattern, see our website www.autexacoustics.co.nz



● Autex Acoustics™
New Zealand

● Lanest™ Peak
in Gherkin

Bespoke design solutions

Let's create something extraordinary.

Our in-house design team offer unique avenues for creative expression to help you achieve your vision—all that's left to explore are the boundaries of your imagination. From bespoke solution design to prototyping, our design team can collaborate with you to design a solution specifically for your project or space.

Have an idea? We'd love to work with you.



● Lanes™ Peak in Surface
Finishes, Statuario

● Autex Acoustics™,
New Zealand





**CARBON
NEUTRAL**

We are
proud to be a
carbon neutral
organisation

We have reduced and balanced all carbon emissions from our business operations, including manufacturing to zero.

We offer entirely
carbon neutral
products

All our products are carbon neutral with emissions offset through certified carbon credits.

0kg

CO₂-e per kg of product



Sustainability pillars

The five pillars of our sustainability strategy define all aspects of our operations and the products we offer.



01



Climate change demands climate action We are carbon neutral in everything we do.

02



Closing the loop We are advocates for closing the loop on waste. We contribute by using recycled material through to creating recyclable products.

03



Sustainable supply chain We carefully select responsible suppliers to eliminate unethical practices and encourage good working conditions.

04



Supporting wellbeing in buildings All our products are made using only safe materials. No harmful chemicals are used in any stage of our process.

05



Operating a business for purpose and profit We strive to have a positive impact on our environment, our people, and the next generation.

In everything we do



Our journey to carbon neutrality

1967

Founded in Auckland, NZ, creating underfelt for the flooring industry

1990

Established a zero-waste production line

2012

Reclaimed waste trimmings, **reducing raw material use and associated emissions**

2017

First EPD's published and started measuring **greenhouse gas emissions**

2020

Dematerialisation project which reduced raw material use **by 30% for core product**

2021

We balanced all emissions from our **acoustic products to zero**

2022

We balanced all emissions from our **global operations to zero**

Australia

New Zealand

United States of America

United Kingdom



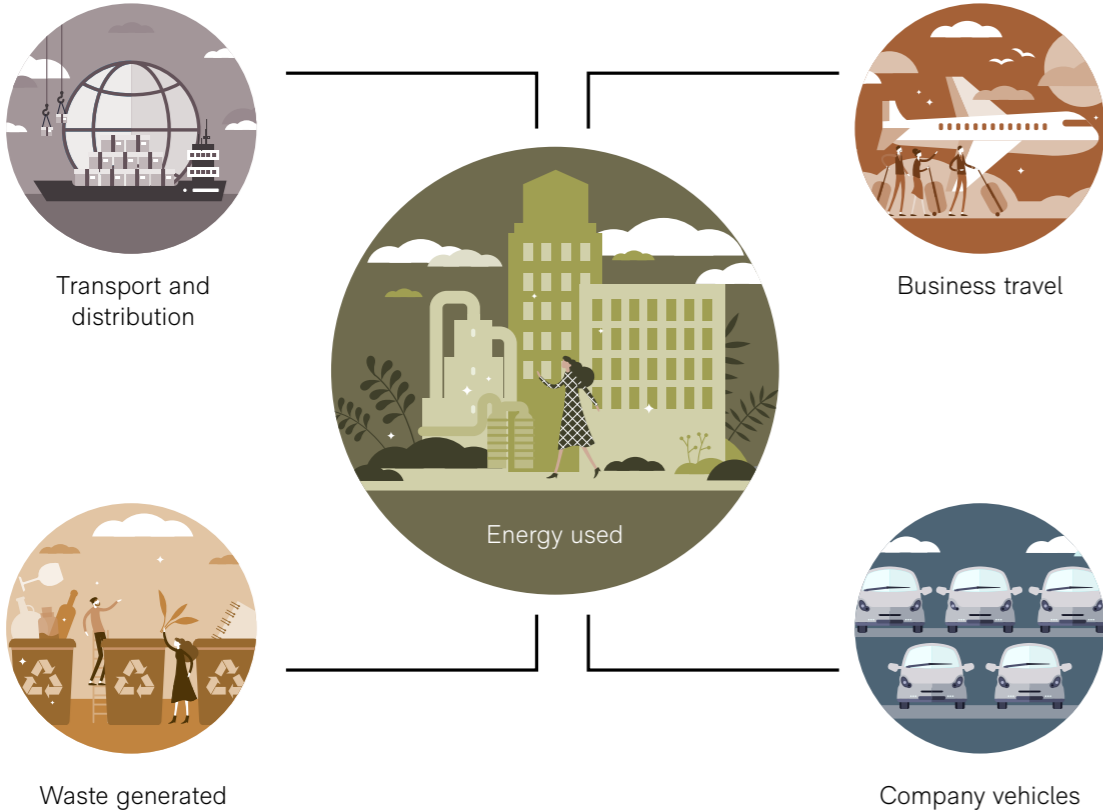
How we're fighting climate change

The climate crisis is the biggest issue of our generation. As a product designer and manufacturer, we have an opportunity to help improve the carbon impact of our industry.

Our operational carbon emissions

We are a carbon neutral business. We actively monitor the carbon emissions of our entire operation to better understand our carbon footprint and how we can further reduce emissions. We have an internal strategy to reduce our carbon emissions and have successfully delivered a number of carbon reduction initiatives within our operations. Any carbon emissions that are currently unavoidable are offset through certified carbon credits. We have a commitment to purchase only verified carbon credits that are retired on robust registers to ensure we are driving positive change.

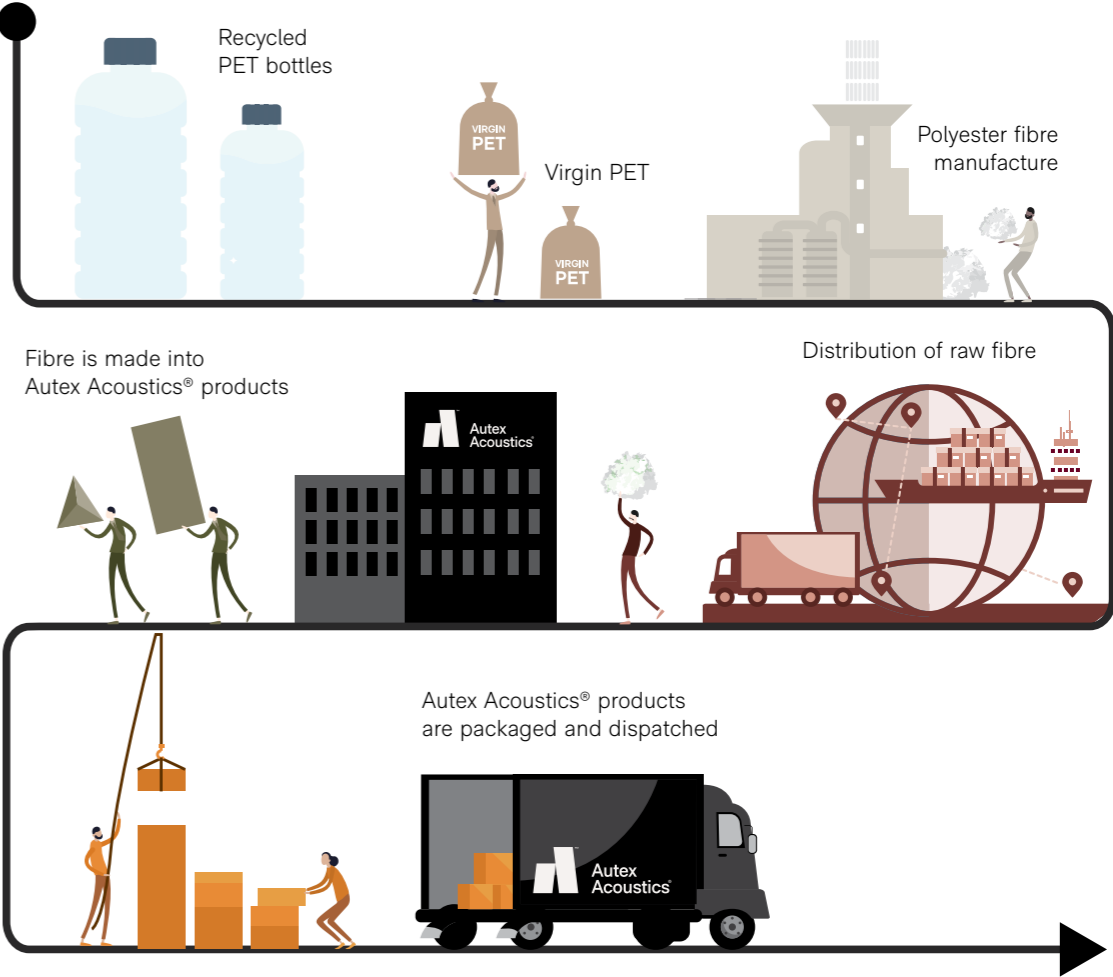
Key business activities contributing to our operational emissions



Embodied carbon of our products

Our products are carbon neutral, and we are the first business in our industry to include the cost of carbon in our products. We consider this an investment in present and future generations, and simply a cost of doing business. We calculate the embodied carbon of our products, from the raw material to the manufacturing gate, using industry recognised ISO standards. We have reduced the carbon footprint of our products through smart design and efficient manufacturing. While the embodied carbon of our products is low, they still do have a carbon impact. We mitigate this through our Carbon Neutral Product Initiative by offsetting the equivalent emissions using certified carbon credits. These carbon credits are generated from projects focused on renewable energy, fuel switching, and reforestation around the world.

Key activities contributing to the embodied carbon of our products





Certifications

Certifying your green building

Autex Acoustics products meet criteria for WELL, LEED, Green Star, and BREEAM building rating systems, helping you achieve certification for your project. For support and guidance on available rating system points, please visit www.autexglobal.com, or speak with your Autex Acoustics account manager.



Environmental Product Declaration

An Environmental Product Declaration (EPD) is a document that communicates information about the life-cycle environmental impact of a product, including embodied carbon. Our EPDs are created and verified in accordance with ISO 14025 and EN 15804, used for construction products and services.



GreenRate – Level A

GreenRate is a multi-attribute environmental certification that scores products on a range of environmental, health, and social measures. Autex Acoustics products are certified to achieve GreenRate Level A. Level A is the highest GreenRate level and demonstrates the highest level of product sustainability.



Declare – International Living Future Institute

The ingredients in our products have been reviewed against the Living Future Challenge Red List and achieve a Third-Party Verified 'Red List Free' status.



Products achieve the highest 'LBC Red List Free' status when:

- Ingredients are 100% disclosed and are not found in the Red List
- Products are shown to meet VOC emissions limits

We assure the accuracy of our certifications by having our Declare labels independently verified by a third party expert.



Health Product Declaration

A Health Product Declaration (HPD) is a document that reports the ingredients of a product and the health effects associated with these ingredients. A Health Product Declaration has been generated for each of our products.



CDPH Standard

CDPH Standard Method (CA Section 01350) is a widely used standard to evaluate building products for low volatile organic chemicals (VOC) and formaldehyde emissions. All Autex Acoustics products meet the limits set by CDPH and the LEED building rating scheme.



ISO Certifications

ISO 14001 – Environmental Management

Autex Acoustics manufactures under environmental management processes that are ISO certified. This certification gives assurance that we manage any environmental impacts within our operations.



ISO 9001 – Quality Management

Autex Acoustics has a strict quality management system that is ISO certified. Robust quality processes from raw material through to product release help ensure our products meet expectations.



ISO 45001 – Health and Safety Management

Autex Acoustics manufacturing operations have an ISO 45001 certified Health and Safety Management System to ensure the safety and wellbeing of our people.



In everything we do

● **New Zealand**

702-718 Rosebank Road,
Private Bag 19988
Avondale 1746, Auckland
T 0800 428 839
T +64 9 828 9179
www.autexacoustics.co.nz

● **Australia**

285 Swan Street,
Richmond, VIC 3121
T 1800 678 160
T +61 3 9450 6700
www.autexacoustics.com.au

● **United Kingdom**

Unit J4, Lowfields Way,
Lowfields Business Park,
Elland, West Yorkshire
HX5 9DA
T +44 0 142 241 8899
www.autexacoustics.co.uk

● **United States**

1630 Dan Kipper Drive,
Riverside, CA 92507
T +1 424 203 1813
www.autexacoustics.com

Autex is an ISO certified organisation encompassing Quality (ISO 9001), Environmental (ISO 14001), and Health and Safety (ISO 45001). Brand names and logos are registered or unregistered trademarks owned or used under license by Autex Industries Limited or other members of the Autex Group. © Copyright 2023 Autex Industries Ltd. All rights reserved. It is the user's responsibility to determine if the product and information presented in this document is suitable for the intended application by engaging a suitably qualified consultant. The information contained in this document is correct to the best of our knowledge at the date of its publication. To verify that this document is the most current publication please check our website or contact your Autex account manager.