

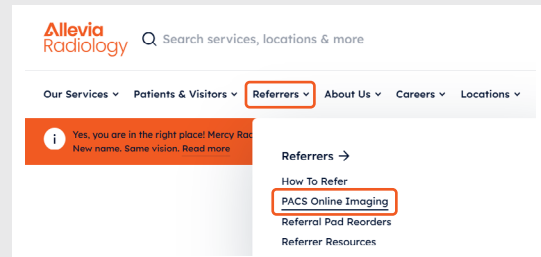
# How to install IntelViewer on your computer

**1**

## Go to the Allevia Radiology website

To access the website click the link below:  
<https://www.alleviaradiology.co.nz/>

Navigate to 'Referrers'  
/'PACS Online Imaging'

**2**

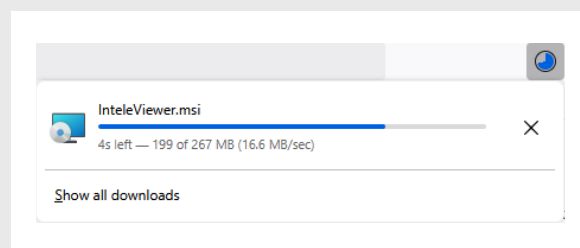
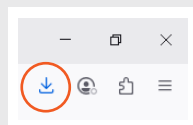
## Download IntelViewer

Scroll down to the 'Download and install appropriate IntelViewer software' section. Select the version for your device: PC, MAC or Osirix.

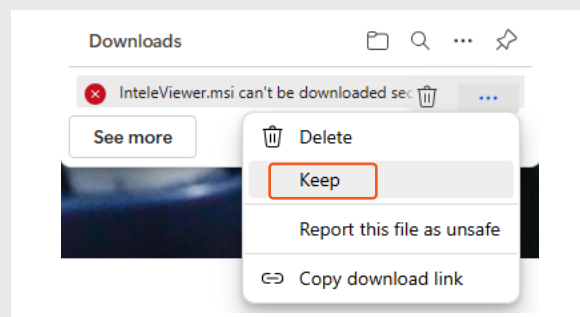
A screenshot of the 'IntelViewer' download page. It features a numbered list of four steps: 1. Apply for an account (with a 'Start your application' button), 2. Download the Installation Guide (with an 'Installation Guide' PDF link), 3. Download and install appropriate IntelViewer software (with links for Windows, Mac, and Osirix software), and 4. Complete the PACS Registration and User Agreement (with a 'PACS Registration and User Agreement' PDF link). The third step is highlighted with a red box.

The file will download to your 'Downloads' folder. You'll see a download notification in your browser.

**Note:** if you have issues downloading the file, click on the download arrow to open the Downloads list.



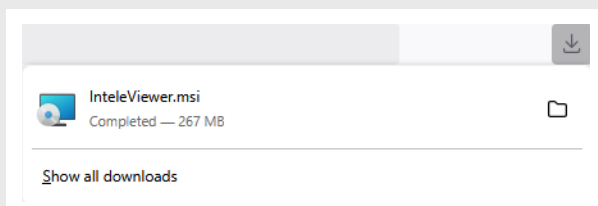
Click on the three dots next to the file, and press 'Keep'.



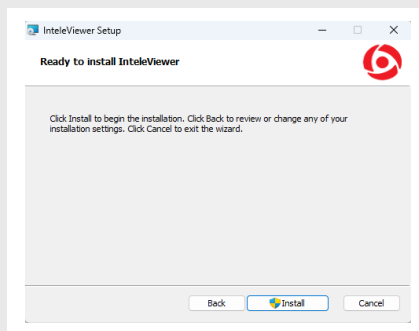
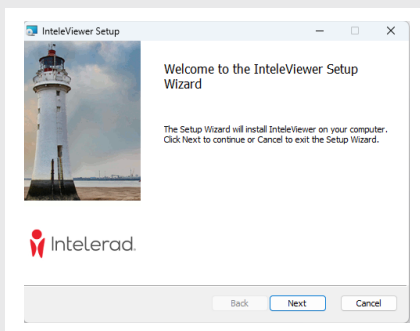
3

### Install IntelViewer

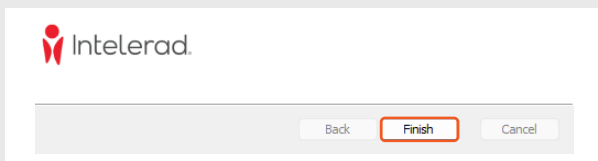
Once the download is complete, click the file to open it.



Follow the steps in the installer.



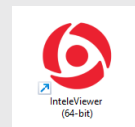
When complete, press 'Finish'.



4

### Open IntelViewer and set up a Bookmark

Double-click the IntelViewer icon on your desktop to open the application.



You will be prompted to add a bookmark.

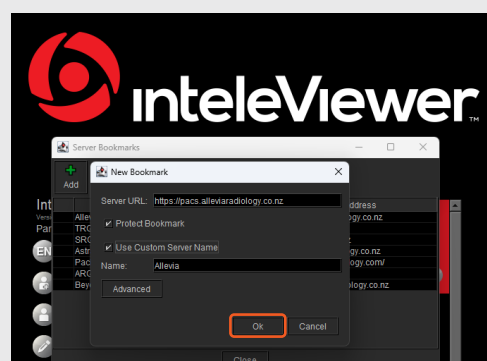
Use this Server URL:

<https://pacs.alleviaradiology.co.nz>

We recommend ticking:

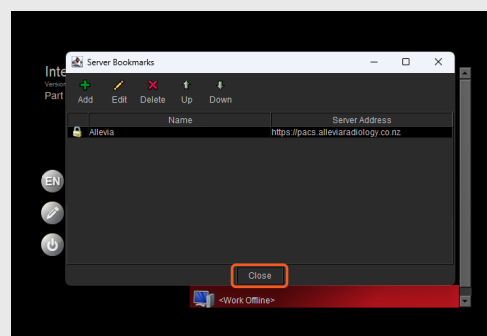
- Protect Bookmark
- Use Custom Server Name –  
in the Name field, enter Allevia

Press 'OK'.



Allevia will now appear in your bookmarks list.

Press 'Close'.



5

## Login

Enter your login details.

If you do not have an account, proceed to Step 6.

6

## Apply for an Account (if needed)

If you do not have a PACS login, click on 'Apply for Account'.

This will direct you to the IntelBrowser login page. Ignore the login details and press 'Apply for an account'.

Read and accept the Confidentiality Agreement.

Fill in your details and click 'Continue'.

**Our team will be in touch shortly to confirm your account.**

### Need help?

Please contact the IT Helpdesk on 09 623 5851 or [ithelpdesk@alleviaradiology.co.nz](mailto:ithelpdesk@alleviaradiology.co.nz).