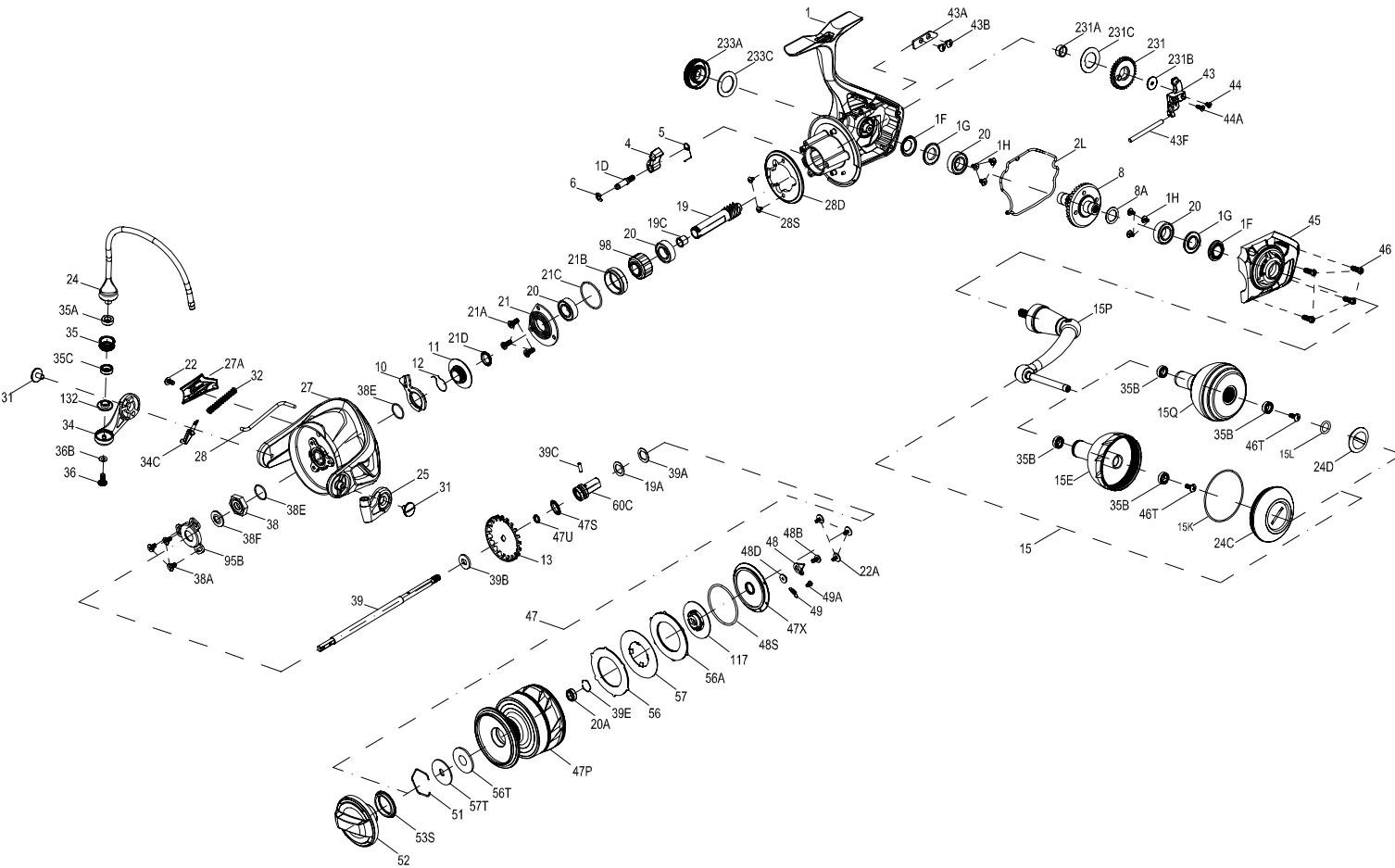




PARTS LIST FOR MODEL SLAMMER IV 8500HS



KEY NO.	PART NO.	STYLE NO.	DESCRIPTION
25	1385663	25-CLA8000	Bail Holder
27	1559381	27-SLAIV8500	Rotor
27A	1559349	27A-SLAIV7500	Rotor Cover
28	1559382	28-SLAIV8500	Rotor Trip Lever
28D	1277161	28D-SSV7500	Rotor Brake
28S	1277054	28S-SSV5500	Rotor Brake Screw(2req.)
31	1277055	31-SSV5500	Bail Arm Screw (2req.)
32	1559351	32-SLAIV7500	Bail Spring
34	1385667	34-CLA8000	Bail Arm
34C	1277164	34C-SSV7500	Pivot Arm
35	1277165	35-SSV7500	Line Roller
35A	1419050	35A-SLA5500	Line Roller Bushing
35B	1377606	35A-BTLII8000LC	Line Roller Ball Bearing(4req.)
35C	1559273	35C-SLAIV5500	Ball Bearing
36	1277166	36-SSV7500	Line Roller Screw
36B	1417809	36B-CLA6000	Bail Arm Screw Washer
38	1419103	38-SLA7500	Rotor Nut
38A	1119121	20C-7000AF	Screw(3req.)
38E	1302502	232B-SSV3500	Bearing Retainer O-Ring(2req.)
38F	1419080	38F-SLA7500	Main Shaft Seal
39	1559352	39-SLAIV7500	Main Shaft
39A	1559353	39A-SLAIV7500	Spool Adjust Washer(2req.)
39B	1277067	39B-SSV5500	Main Shaft Washer
39C	1559354	39C-SLAIV7500	Main Shaft Dowel
39E	1559277	39E-SLAIV5500	Lock Spring
43	1419105	43-SLA7500	Oscillation Slider
43A	1277173	43A-SSV7500	O/S Slider Guide
43B	1277070	43B-SSV5500	Screw(2req.)
43F	1389567	43F-CLA6000	O/S Slider Guide Shaft
44	1385672	44-CLA8000	Main Shaft Screw
44A	1447691	44A-SLAIII8500HS	Screw
45	1559393	45-SLAIV8500HS	Body Cover Assembly
46	1277074	46-SSV5500	Body Cover Screw (4req.)
46T	1341500	3-SSV7500LC	Screw(2req.)
47	1559394	47-SLAIV8500HS	Spool Assembly
47P	1559395	47P-SLAIV8500HS	Spool
47S	1494699	47S-SSV12500LL	Seal
47U	1525247	47U-CLAI15000	Seal
47X	1559358	47X-SLAIV7500	Drag Cover
48	1419069	48-SLA5500	Spool Click Plate
48B	1385581	48B-CLA3000	Spool Clicker Spring Screw
48D	1385579	48D-CLA3000	Spool Clicker Spacer Ring
48S	1559359	48S-SLAIV7500	Spool Seal
49	1259579	49-7000AF	Spring
49A	1559283	49A-SLAIV5500	Screw
51	1277085	51-CLAI11000	Drag Washer Retainer
52	1559396	52-SLAIV8500HS	Drag Knob Assembly
53S	1339555	53S-CLA5000	Drag Knob Seal
56	1419077	56-SLA7500	Drag Friction Washer
56A	1419078	56A-SLA7500	Drag Friction Washer
56T	1277089	56T-SSV5500	Drag Friction Washer
57	1559361	57-SLAIV7500	Keyed Drag Washer
57T	1419058	57T-SLA5500	Keyed Drag Washer
60C	1559362	60C-SLAIV7500	Spool Support Sleeve
95B	1419114	95B-SLA7500	Rotor Nut Locking Plate
98	1277190	98-SSV7500	Clutch/Sleeve Assembly
117	1559363	117-SLAIV7500	Drag Drive Plate
132	1419163	132-SLA9500	Line Roller Collar
231	1419117	231-SLA7500	Oscillation Gear
231A	1339566	231A-CLA5000	O/S Gear Bushing
231B	1277100	231B-SSV5500	O/S Gear Screw
231C	1389603	231C-CLA6000	O/S Gear Washer
233A	1559364	233A-SLAIV7500	Handle Cap
233C	1419076	233C-SLA5500	Handle Cap Seal

KEY NO.	PART NO.	STYLE NO.	DESCRIPTION	KEY NO.	PART NO.	STYLE NO.	DESCRIPTION
1	1559391	1-SLAIV8500HS	Body Assembly	15L	1417804	15L-CLA2000	Handle Knob Seal
1D	1277140	1D-SSV7500	A/R Pawl Post	15P	1422396	15P-SLA7500	Sub Handle Assembly
1F	1419083	1F-SLA7500	Body Side Seal (2req.)	15Q	1418244	15E-CLA6000	Handle Knob
1G	1419082	1G-SLA7500	Body Side Seal Lock Plate (2req.)	19	1447685	19-SLAIII85HS	Pinion Gear
1H	1418957	1H-SLA3500	Body Side Screw(6req.)	19A	1277424	19A-SSV3500	Pinion Gear Washer
2L	1419086	2L-SLA7500	Body Seal	19C	1419092	19C-SLA7500	Pinion Gear Bushing
4	1277142	4-SSV7500	A/R Pawl	20	1277152	20A-SSV7500	Ball Bearing(4req.)
5	1277143	5-SSV7500	Pawl Spring	20A	1385530	20A-CLA3000	Sealed Ball Bearing
6	1277144	6-SSV7500	Retainer Clip	21	1559345	21-SLAIV7500	Ball Bearing Retainer
8	1447682	8-SLAIII85HS	Drive Gear	21A	1277154	21A-SSV7500	Pinion Retainer Screw (3req.)
8A	1277037	8A-SSV5500	Drive Gear Shim Washer	21B	1419094	21B-SLA7500	Pinion Ball Bearing Collar
10	1277147	10-SSV7500	A/R Pawl Holder	21C	1385684	21C-CLA8000	O Ring
11	1559343	11-SLAIV7500	A/R Bushing	21D	1559346	21D-SLAIV7500	Body Head Seal
12	1309001	12-SSV9500	A/R Bushing Spring	22	1277046	22-SSV5500	Rotor Cover Screw
13	1419089	13-SLA7500	Click Gear	22A	1125962	231G-7000AF	Screw(3req.)
15	1559392	15-SLAIV8500HS	Handle Assembly	24	1559380	24-SLAIV8500	One Piece Bail
15E	1559264	15E-SLAIV5500	Handle Knob	24C	1559339	24C-SLAIV6500HS	Handle Knob Cap
15K	1419073	15K-SLA5500	Handle Knob Cap Seal	24D	1417808	24C-CLA5000	Handle Knob Cap