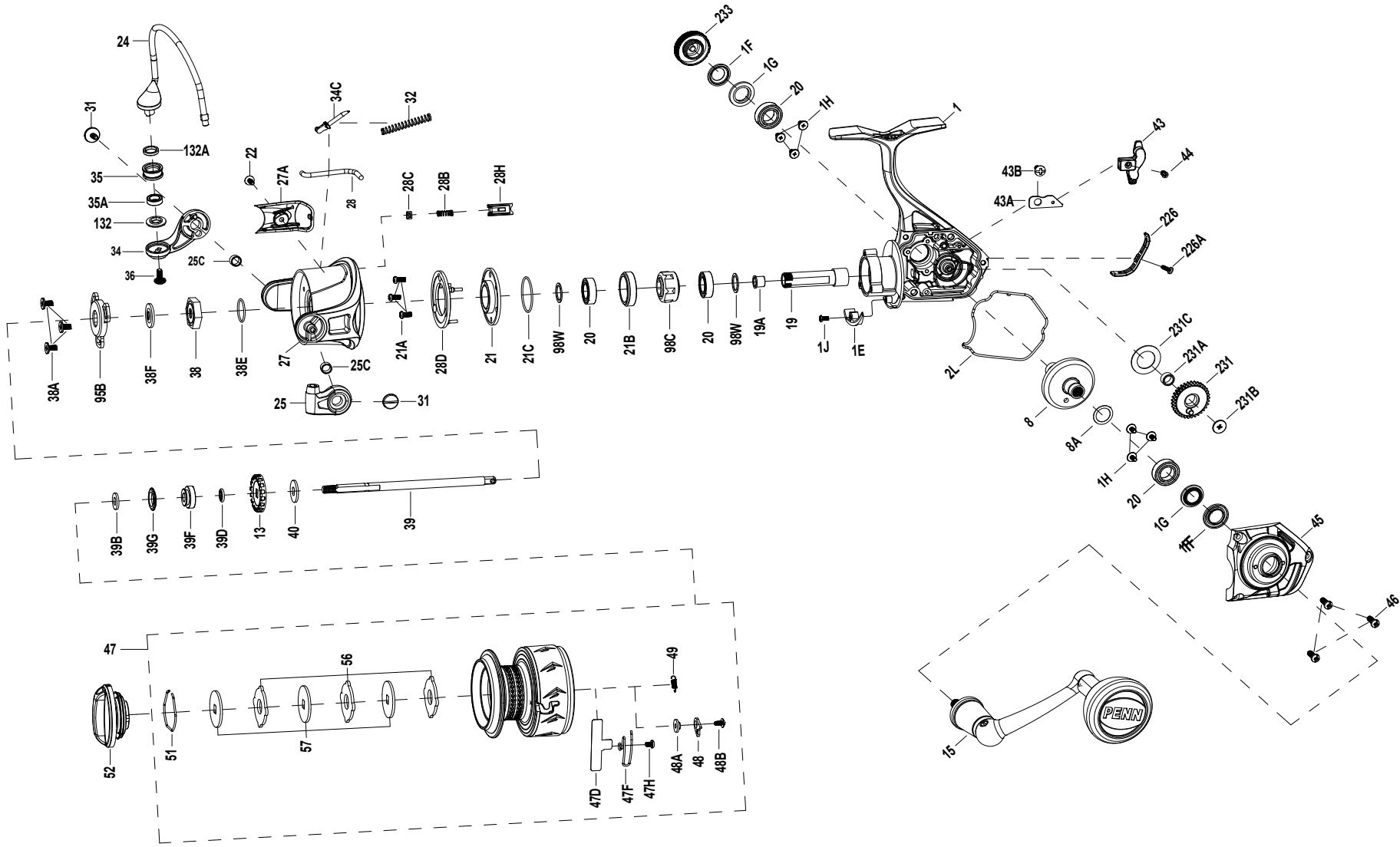




SSVII2500AU
EXPLODED DRAWING





Thank you for your recent PENN gear purchase. No matter where you fish or what you fish for, you can depend PENN to perform in any battle day in and day out. Now it's time to get your product registered and get out on the water.

<https://register.pennfishing.com>

KEY NO.	PART NO.	PENN STYLE NO.	DESCRIPTION
1	1612341	1-SSVII2500AU	Housing Assembly
1E	1489251	1E-SSVI2500	Housing Slope
1F	1489174	1F-SSVI3500	Main Gear Seal Ring (2 req)
1G	1489175	1G-SSVI3500	Seal Plate (2 req)
1H	1489176	1H-SSVI3500	Bearing Screw(6 req)
1J	1489177	1J-SSVI3500	Housing Slope Screw
2L	1489252	2L-SSVI2500	Housing Seal Ring
8	1612316	8-SSVII2500	Main Gear
8A	1191028	8A-3000SG	Shim
13	1489180	13-SSVI3500	Click Ratchet
15	1614365	15-SSVII2500AU	Handle Assembly
19	1612317	19-SSVII2500	Pinion Gear
19A	1191252	19A-3000SG	Pinion Bushing
20	1308050	20-CFT3000	Ball Bearing (4 req)
21	1489255	21-SSVI2500	Bearing Retainer (3 req)
21A	1489184	21A-SSVI3500	Screw (3 req)
21B	1489256	21B-SSVI2500	Collar
21C	1489257	21C-SSVI2500	Bearing Retainer O Ring
22	1203978	22-3000PUR	Bail Pivot Cover Screw
24	1489258	24-SSVI2500	Bail Wire
25	1489259	25-SSVI2500	Bail Holder
25C	1489260	25C-SSVI2500	Bushing (2 req)
27	1489261	27-SSVI2500	Rotor
27A	1489262	27A-SSVI2500	Bail Pivot Cover
28	1489263	28-SSVI2500	Trip Lever
28B	1489193	28B-SSVI3500	Rotor Brake Spring

KEY NO.	PART NO.	PENN STYLE NO.	DESCRIPTION
28C	1489264	28C-SSVI2500	Rubber Sleeve
28D	1489266	28D-SSVI2500	Rotor Brake
28H	1489265	28H-SSVI2500	Rotor Brake
31	1489267	31-SSVI2500	Bail Arm Screw (2 req)
32	1489268	32-SSVI2500	Bail Spring
34	1489269	34-SSVI2500	Bail Arm
34C	1489270	34C-SSVI2500	Pivot Arm
35	1489271	35-SSVI2500	Line Roller
35A	1489200	35A-SSVI3500	Roller Bearing
36	1251748	36-1000FRC	Bail Stud Screw
38	1489201	38-SSVI3500	Rotor Nut
38A	1489202	38A-SSVI3500	Cover Screw (3 req)
38E	1489203	38E-SSVI3500	Rotor O Ring
38F	1489204	38F-SSVI3500	Main Shaft Seal Ring
39	1489272	39-SSVI2500	Main Shaft
39B	1489206	39B-SSVI3500	Thrust Washer
39D	1489207	39D-SSVI3500	Spool Bushing Seal Ring
39F	1489208	39F-SSVI3500	Spool Bushing
39G	1489209	39G-SSVI3500	Spool Seal Ring
40	1489210	40-SSVI3500	Main Shaft Washer
43	1489273	43-SSVI2500	Crosswind Block
43A	1489274	43A-SSVI2500	Crosswind Block Plate
43B	1489213	43B-SSVI3500	Crosswind Block Plate Screw
44	1489214	44-SSVI3500	Crosswind Block Screw
45	1489275	45-SSVI2500	Housing Cover Assembly

KEY NO.	PART NO.	PENN STYLE NO.	DESCRIPTION
46	1192645	21A-5000SG	Screw (3 req)
47	1612318	47-SSVII2500	Spool Assembly
47D	1612339	47D-SSVII2500	Line Clip
47F	1612340	47F-SSVII2500	Line Clip Spring
47H	1529492	47H-BTLIII5000	Line Clip Spring Screw
48	1489277	48-SSVI2500	Click Tongue
48A	1214226	48A-3000SG	Click Tongue Washer
48B	1489220	48B-SSVI3500	Spool Click Screw
49	1211605	49-3000SG	Click Tongue Spring
51	1308078	51-CFT3000	Drag Retaining Ring
52	1489278	52-SSVI2500	Drag Knob Assembly
56	1308080	56-CFT3000	Drag Washer (3 req)
57	1489222	57-SSVI3500	Keyed Washer (3 req)
95B	1489223	95B-SSVI3500	Rotor Nut Cover
98C	1489279	98C-SSVI2500	Clutch/Sleeve Assembly
98W	1204004	98W-3000PUR	Clutch Washer(2 req)
132	1489280	132-SSVI2500	Roller Washer
132A	1489281	132A-SSVI2500	Line Roller Bushing
226	1489282	226-SSVI2500	Rear Cover
226A	1489283	226A-SSVI2500	Rear Cover Screw
231	1489284	231-SSVI2500	Crosswind Gear
231A	1489229	231A-SSVI3500	Crosswind Gear Bushing
231B	1489230	231B-SSVI3500	Crosswind Gear Screw
231C	1489285	231C-SSVI2500	Crosswind Gear Washer
233	1489286	233-SSVI2500	Bearing Cover Assembly