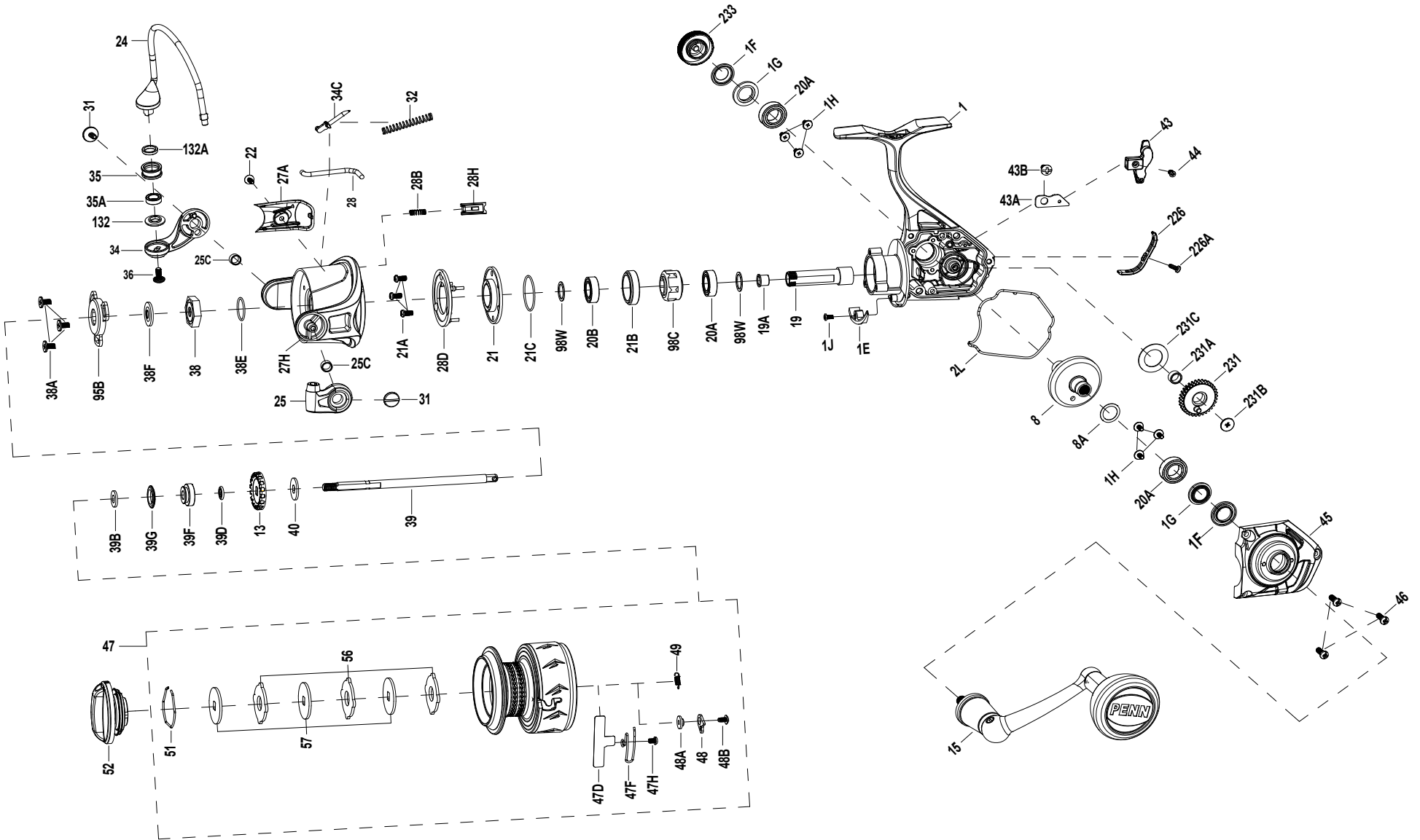




SSVII3500AU
EXPLODED DRAWING





Thank you for your recent PENN gear purchase. No matter where you fish or what you fish for, you can depend PENN to perform in any battle day in and day out. Now it's time to get your product registered and get out on the water.

<https://register.pennfishing.com>

KEY NO.	PART NO.	PENN STYLE NO.	DESCRIPTION
1	1612342	1-SSVII3500	Housing Assembly
1E	1489173	1E-SSVI3500	Housing Slope
1F	1489174	1F-SSVI3500	Seal Ring (2 req)
1G	1489175	1G-SSVI3500	Seal Plate (2 req)
1H	1489176	1H-SSVI3500	Bearing Screw(6 req)
1J	1489177	1J-SSVI3500	Housing Slope Screw
2L	1489178	2L-SSVI3500	Housing Seal Ring
8	1612316	8-SSVII2500	Main Gear
8A	1191028	8A-3000SG	Shim
13	1489180	13-SSVI3500	Click Ratchet
15	1614367	15-SSVII3500AU	Handle Assembly
19	1612343	19-SSVII3500	Pinion Gear
19A	1191252	19A-3000SG	Pinion Bushing
20A	1308050	20-CFT3000	Ball Bearing (3 req)
20B	1308051	20A-CFT3000	Ball Bearing
21	1489183	21-SSVI3500	Bearing Retainer
21A	1489184	21A-SSVI3500	Screw (3 req)
21B	1489185	21B-SSVI3500	Collar
21C	1489186	21C-SSVI3500	Bearing Retainer O Ring
22	1203997	43B-3000PUR	Bail Pivot Cover Screw
24	1489187	24-SSVI3500	Bail Wire
25	1489188	25-SSVI3500	Bail Holder
25C	1489189	25C-SSVI3500	Bushing (2 req)
27A	1489190	27A-SSVI3500	Bail Pivot Cover
27H	1489191	27H-SSVI3500	Rotor Assembly
28	1489192	28-SSVI3500	Trip Lever

KEY NO.	PART NO.	PENN STYLE NO.	DESCRIPTION
28B	1489193	28B-SSVI3500	Rotor Brake Spring
28D	1489195	28D-SSVI3500	Rotor Brake
28H	1489194	28H-SSVI3500	Rotor Brake
31	1489196	31-SSVI3500	Bail Arm Screw (2 req)
32	1191583	32-2000SG	Bail Spring
34	1489197	34-SSVI3500	Bail Arm
34C	1489198	34C-SSVI3500	Pivot Arm
35	1489199	35-SSVI3500	Line Roller
35A	1489200	35A-SSVI3500	Roller Bearing
36	1191699	36-3000SG	Bail Stud Screw
38	1489201	38-SSVI3500	Rotor Nut
38A	1308069	38A-CFT3000	Screw (3 req)
38E	1489203	38E-SSVI3500	Rotor O Ring
38F	1489204	38F-SSVI3500	Main Shaft Seal Ring
39	1489205	39-SSVI3500	Main Shaft
39B	1489206	39B-SSVI3500	Thrust Washer
39D	1489207	39D-SSVI3500	Spool Bushing Seal Ring
39F	1489208	39F-SSVI3500	Spool Bushing
39G	1489209	39G-SSVI3500	Spool Seal Ring
40	1489210	40-SSVI3500	Main Shaft Washer
43	1489211	43-SSVI3500	Crosswind Block
43A	1489212	43A-SSVI3500	Crosswind Block Plate
43B	1489213	43B-SSVI3500	Plate Screw
44	1489214	44-SSVI3500	Crosswind Block Screw
45	1489215	45-SSVI3500	Housing Cover Assembly

KEY NO.	PART NO.	PENN STYLE NO.	DESCRIPTION
46	1192645	21A-5000SG	Screw (3 req)
47	1612344	47-SSVII3500	Spool Assembly
47D	1612339	47D-SSVII2500	Line Clip
47F	1612340	47F-SSVII2500	Line Clip Spring
47H	1529492	47H-BTLIII5000	Line Clip Spring Screw
48	1211604	48-3000SG	Click Tongue
48A	1214226	48A-3000SG	Click Tongue Washer
48B	1489220	48B-SSVI3500	Spool Click Screw
49	1211605	49-3000SG	Click Tongue Spring
51	1308078	51-CFT3000	Drag Retaining Ring
52	1489221	52-SSVI3500	Drag Knob Assembly
56	1308080	56-CFT3000	Drag Washer (3 req)
57	1489222	57-SSVI3500	Keyed Washer (3 req)
95B	1489223	95B-SSVI3500	Rotor Nut Cover
98C	1308082	98C-CFT3000	Clutch/Sleeve Assembly
98W	1204004	98W-3000PUR	Clutch Washer (2 req)
132	1489224	132-SSVI3500	Roller Washer
132A	1489225	132A-SSVI3500	Line Roller Bushing
226	1489226	226-SSVI3500	Rear Cover
226A	1489227	226A-SSVI3500	Rear Cover Screw
231	1489228	231-SSVI3500	Crosswind Gear
231A	1489229	231A-SSVI3500	Crosswind Gear Bushing
231B	1489230	231B-SSVI3500	Crosswind Gear Screw
231C	1489231	231C-SSVI3500	Crosswind Gear Washer
233	1489286	233-SSVI2500	Bearing Cover Assembly