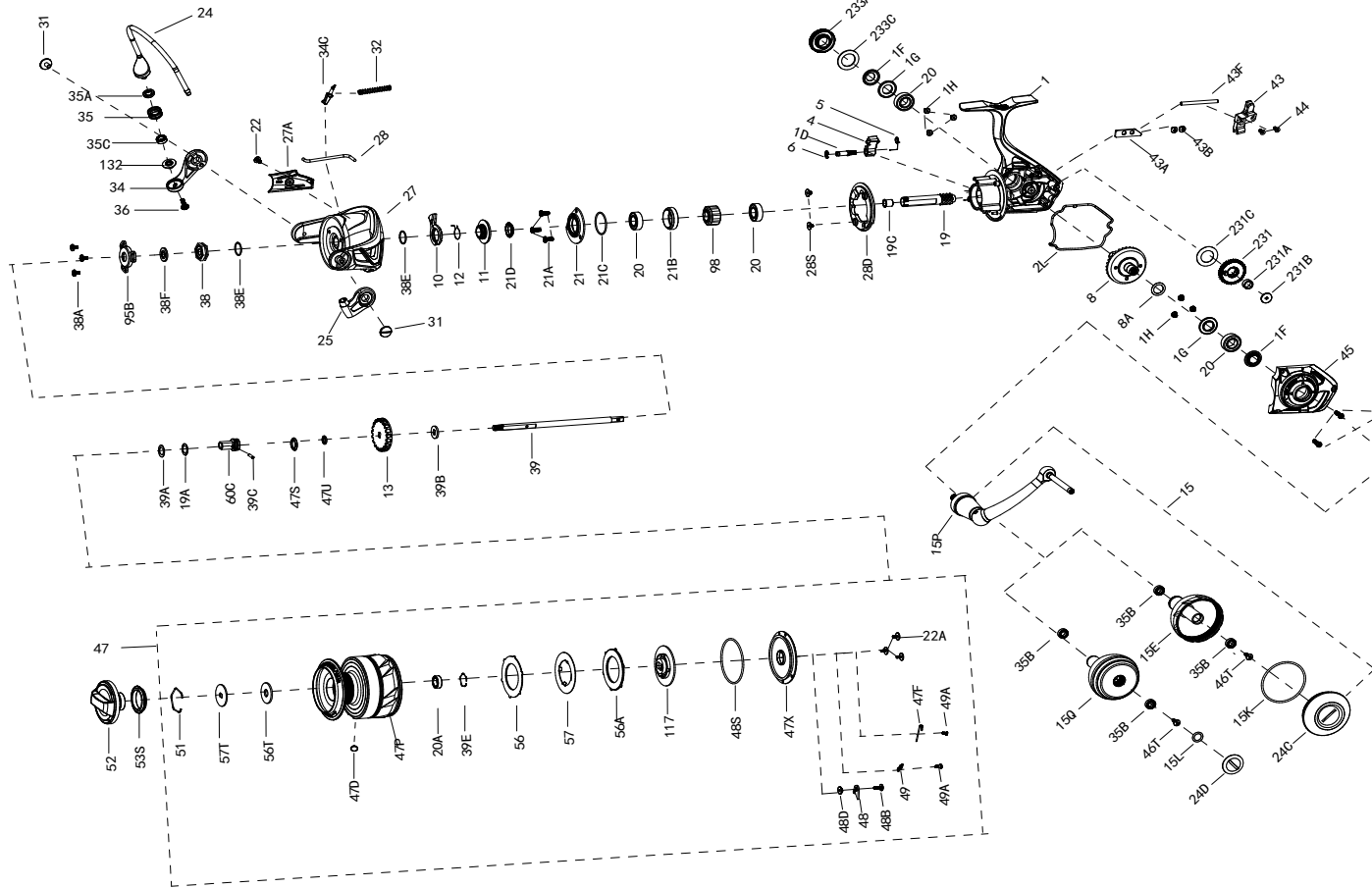




# PARTS LIST FOR MODEL SLAIV6500/6500HS



KEY NO.	PART NO.	PENN STYLE NO.	DESCRIPTION
27	1559319	27-SLAIV6500	Rotor
27A	1559321	27A-SLAIV6500	Rotor Cover
28	1559320	28-SLAIV6500	Rotor Trip Lever
28D	1457402	28D-SLAIII6500HS	Rotor Brake
28S	1339512	28S-CLA5000	Rotor Brake Screw(2req.)
31	1277055	31-SSV5500	Bail Arm Screw(2req.)
32	1389467	32-CLA6000	Bail Spring
34	1389468	34-CLA6000	Bail Arm
34C	1389469	34C-CLA6000	Pivot Arm
35	1457403	35-SLAIII6500HS	Line Roller
35A	1457404	35A-SLAIII6500HS	Line Roller Bushing
35B	1377606	35A-BTLII8000LC	Line Roller Ball Bearing(2req.)
35C	1559273	35C-SLAIV5500	Ball Bearing
36	1422399	36-SLA9500	Line Roller Screw
38	1419051	38-SLA5500	Rotor Nut
38A	1119121	20C-7000AF	Screw(3req.)
38E	1418958	38E-SLA3500	Pinion Gear Seal(2req.)
38F	1419052	38F-SLA5500	Rotor-Main Shaft Seal
39	1559324	39-SLAIV6500	Main Shaft
39A	1559275	39A-SLAIV5500	Washer
39B	1277067	39B-SSV5500	Main Shaft Washer
39C	1559276	39C-SLAIV5500	Pin
39E	1559277	39E-SLAIV5500	Lock Spring
43	1419031	43-SLA6500	Oscillation Slide
43A	1339536	43A-CLA5000	O/S Slider Guide
43B	1559161	43B-SLAIV2500	Screw(2req.)
43F	1419029	43F-SLA6500	Guide Shaft
44	1277072	44-SSV5500	Main Shaft Screw(2req.)
45	1559318	45-SLAIV6500	Body Cover Assembly
45	1559337	45-SLAIV6500HS	Body Cover Assembly
46	1277074	46-SSV5500	Body Cover Screw (3req.)
46T	1277046	22-SSV5500	Rotor Cover Screw
47	1559327	47-SLAIV6500	Spool Assembly
47	1559340	47-SLAIV6500HS	Spool Assembly
47D	1259574	10-7000AF	Line Hook
47F	1419068	47F-SLA6500	Line Clip Retainer
47P	1559323	47P-SLAIV6500	Spool
47P	1559338	47P-SLAIV6500HS	Spool
47S	1559281	47S-SLAIV5500	Seal
47U	1525247	47U-CLAI15000	Seal
47X	1559282	47X-SLAIV5500	Drag Cover
48	1419069	48-SLA5500	Spool Click Plate
48B	1419156	48B-SLA9500	Spool Clicker Spring Screw
48D	1385579	48D-CLA3000	Spool Clicker Spacer Ring
48S	1276958	48S-SSV3500	Drag Cover Seal
49	1385580	49-CLA3000	Spool Clicker Spring
49A	1559283	49A-SLAIV5500	Screw(2req.)
51	1277085	51-SSV5500	Drag Washer Retainer
52	1559284	52-SLAIV5500	Drag Knob Assembly
52	1559901	52-SLAIV6500HS	Drag Knob Assembly
53S	1339555	53S-CLA5000	Drag Knob Seal
56	1419060	56-SLA5500	Drag Friction Washer
56A	1419062	56A-SLA5500	Drag Friction Washer
56T	1277089	56T-SSV5500	Drag Friction Washer
57	1559285	57-SLAIV5500	Keyed Drag Washer
57T	1419058	57T-SLA5500	Keyed Drag Washer
60C	1559286	60C-SLAIV5500	Spool Support Sleeve
95B	1419009	95B-SLA3500	Rotor Nut Locking Plate
98	1277094	98-SSV5000	Clutch/Sleeve Assembly
117	1559287	117-SLAIV5500	Drag Drive Plate
132	1559326	132-SLAIV6500	Line Roller Collar
231	1389600	231-CLA6000	O/S Gear
231A	1339566	231A-CLA5000	O/S Gear Bushing
231B	1525918	231B-CLAI15000	Screw
231C	1389603	231C-CLA6000	O/S Gear Washer
233A	1559288	233A-SLAIV5500	Handle Cap
233C	1419076	233C-SLA5500	Handle Cap Seal

KEY NO.	PART NO.	PENN STYLE NO.	DESCRIPTION
1	1559317	1-SLAIV6500	Body Assembly
1	1559336	1-SLAIV6500HS	Body Assembly
1D	1277140	1D-SSV7500	A/R Pawl Post
1F	1419019	1F-SLA5500	Body Side Seal(2req.)
1G	1419020	1G-SLA5500	Body Side Seal Lock Plate(2req.)
1H	1418957	1H-SLA3500	Body Side Screw(6req.)
2L	1419036	2L-SLA6500	Body Seal
4	1389459	4-CLA6000	A/R Pawl
5	1339474	5-CLA5000	Pawl Spring
6	1277144	6-SSV7500	Retainer Clip
8	1419034	8-SLA5500	Drive Gear
8	1447667	8-SLAIII6500HS	Drive Gear
8A	1277037	8A-SSV5500	Drive Gear Shim Washer
10	1419936	10-CLA6000	A/R Pawl Holder
11	1559262	11-SLAIV5500	A/R Bushing
12	1339487	12-CLA5000	A/R Bushing Spring
13	1419053	13-SLA5500	Click Gear
15	1559263	15-SLAIV5500	Handle Assembly
15	1559341	15-SLAIV6500HS	Handle Assembly
15E	1559264	15E-SLAIV5500	Handle Knob
15K	1419073	15K-SLA5500	Handle Knob Cap Seal

KEY NO.	PART NO.	PENN STYLE NO.	DESCRIPTION
15L	1447871	15L-CFTI13000	Handle Knob Seal
15P	1422395	15P-SLA5500	Sub-Handle Assembly
15Q	1559265	15Q-SLAIV5500	Handle Knob Assembly
19	1559325	19-SLAIV6500	Pinion Gear
19	1447672	19-SLAIII6500HS	Pinion Gear
19A	1277424	19A-SSV3500	Pinion Gear Washer
19C	1419023	19C-SLA5500	Pinion Gear Bushing
20	1308090	20-CFT5000	Ball Bearing(4req.)
20A	1385530	20A-CLA3000	Sealed Ball Bearing
21	1559266	21-SLAIV5500	Ball Bearing Retainer
21A	1277154	21A-SSV7500	Pinion Retainer Screw(3 req)
21B	1419024	21B-SLA5500	Pinion Bearing Collar
21C	1385684	21C-CLA8000	O Ring
21D	1559267	21D-SLAIV5500	Seal
22	1276928	22-SSV3500	Rotor Cover Screw
22A	1496533	22A-SLA7500	Screw(3req.)
24	1559322	24-SLAIV6500	One Piece Bail
24C	1559269	24C-SLAIV5500	Handle Knob Cap
24C	1559339	24C-SLAIV6500HS	Handle Knob Cap
24D	1417808	24C-CLA5000	Handle Knob Cap
25	1339500	25-CLA5000	Bail Holder

407-SLAIV6500 Rev.01 4-21-21  
 407-SLAIV6500HS Rev.01 4-21-21  
 1545766-SLAIV6500  
 1545767-SLAIV6500HS