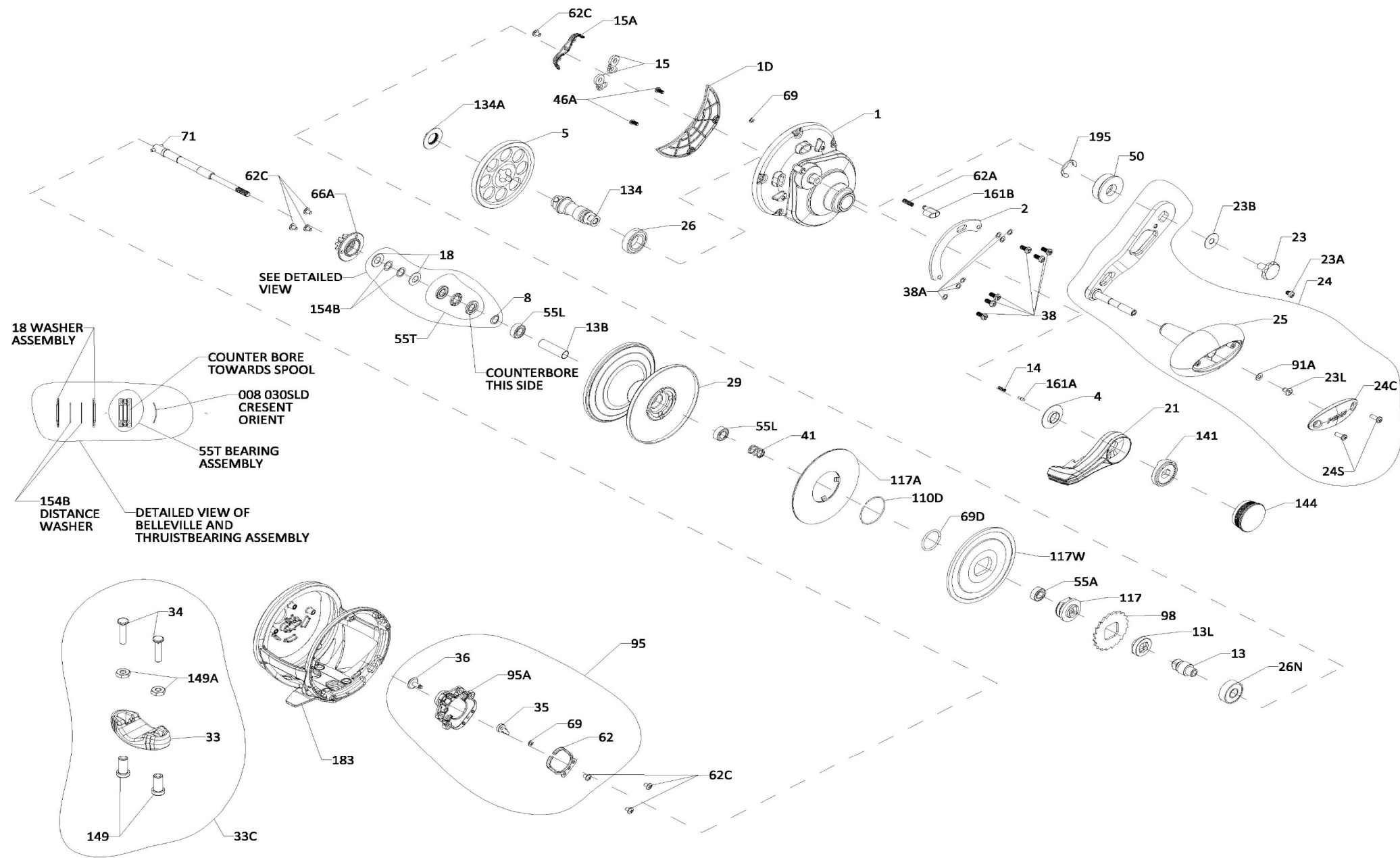




PARTS LIST FOR MODEL
FATHOM II 40NLD, 40NLDHS
REEL PART NO. 1578244, 1563380



Key No.	Part No.	Penn Style No.	Description Parts List
1	1580535	1-FTHII40NLD	Right Side Plate (40NLD)
1	1580165	1-FTHII40NLDHS	Right Side Plate (40NLDHS)
1D	1580171	1D-FTHII40NLD2	Gearbox Cover
2	1580175	2-FTHII40NLD2	Quadrant
4	1264978	4-TRQ15LD2	Lever Washer
5	1338140	5-FTH40NLD	Main Gear (40NLD)
5	1338141	5-FTH40NLDHS	Main Gear (40NLDHS)
8	1257843	8-30SLD	Spring Washer
13	1338144	13-FTH40NLD	Pinion (40NLD)
13	1338145	13-FTH40NLDHS	Pinion (40NLDHS)
13B	1309869	13B-FTH40NLD2	Spacer Tube
13L	1338146	13L-FTH40NLD	Spacer
14	1181406	14-535	Spring
15	1229374	15-TRQ40	Dog Asm (2 req)
15A	1580194	15A-FTHIILD	Anti Rev Dog Retainer
18	1265001	18-TRQ40NLD2	Spring Washer (2 req)
21	1580198	21-FTHII40NLD2	Drag Lever (40NLD)
21	1580200	21-FTHII40NLDHS	Drag Lever (40NLDHS)
23	1589722	23-FTHIILD	Handle Screw (Black)
23A	1589723	23A-FTHIILD	Handle Lock Screw (Black)
23B	1207784	23B-20	Handle Screw Washer
23L	1191283	23L-750	Screw
24	1580205	24-FTHIILD	Handle Assembly
24C	1286717	24C-SQL50LW	Cap- Handle Knob
24S	1265021	24S-TRQ40NLD2	Screw (2 req)
25	1286716	25-SQL50	Handle knob
26	1265023	26-TRQ40NLD2	Bearing
26N	1182145	26N-25	Bearing
29	1580214	29-FTHII40NLD2	Spool
33	1290729	33-TRQ	Rod Clamp
33C	1580218	33C-FTHIILD2	Rod Clamp Kit
34	1580220	34-FTHIILD2	Screw, Rod Clamp (2 req)
35	1188656	35-20	Click Tongue
36	1516151	36-FTHII15SD	Click Button
38	1309885	38-FTH15LD	Screw (6 req)
38A	1188649	38A-20	Flat Washer (6 req)
41	1265056	41-TRQ40NLD2	Drag Disengaging Spring
46A	1488755	46A-FTHII30LW	Cover Plate Screw (2 req)
50	1309889	50-FTH60LD2	Shield Guard
55A	1238912	55A-50SLD	Ball Bearing
55L	1286985	55L-20	Ball Bearing (2 req)
55T	1238913	55T-30SLD	Thrust Bearing
62	1188664	62-20	Click Spring
62A	1236596	62-TRQ40	Spring Click Locator
62C	1188654	62C-20	Screw (7 req)
66A	1265059	66A-FTHLD	Click Gear
69	1188657	69-20	Retainer (2 req)
69D	1265060	69D-FTH15LD	Retaining Ring
71	1580234	71-FTHII40NLD2	Spindle
91A	1277514	91A-TRQ40NLD2	Handle Knob Washer
95	1580237	95-FTHIILD2	Click Module Assembly
95A	1580238	95A-FTHIILD2	Click Module Housing
98	1265073	98-FTH40NLD2	Ratchet
110D	1309895	110D-FTH15LD2	Retaining Ring
117	1309896	117-FTH15LD2	Drive Plate
117A	1309899	117A-FTH40NLD2	Drag Washer (Assembly)
117W	1309902	117W-FTH40NLD2	Drag Washer Metal
134	1338160	134-FTH40NLD	Gear Stud
134A	1265086	134A-30SLD2	Nut Gear Stud
141	1580246	141-FTHIILD	Cam Follower
144	1580247	144-FTHIILD	Preset Knob Assembly
149	1184702	149-45	Rod Clamp Nut (2 req)
149A	1184706	149-200	Hex Nut (2 req)
154B	1309903	154B-FTH25NLD2	Distance Washer (40NLD) (2 req)
161A	1265098	161A-TRQ15LD2	Lever Click Pin
161B	1265099	161B-TRQ40NLD2	Strike Button
183	1580259	183-FTHII40NLD2	Frame Assembly (40N)
183	1580261	183-FTHII40NLDHS	Frame Assembly (40NLDHS)
195	1184955	195-40	Retaining Ring