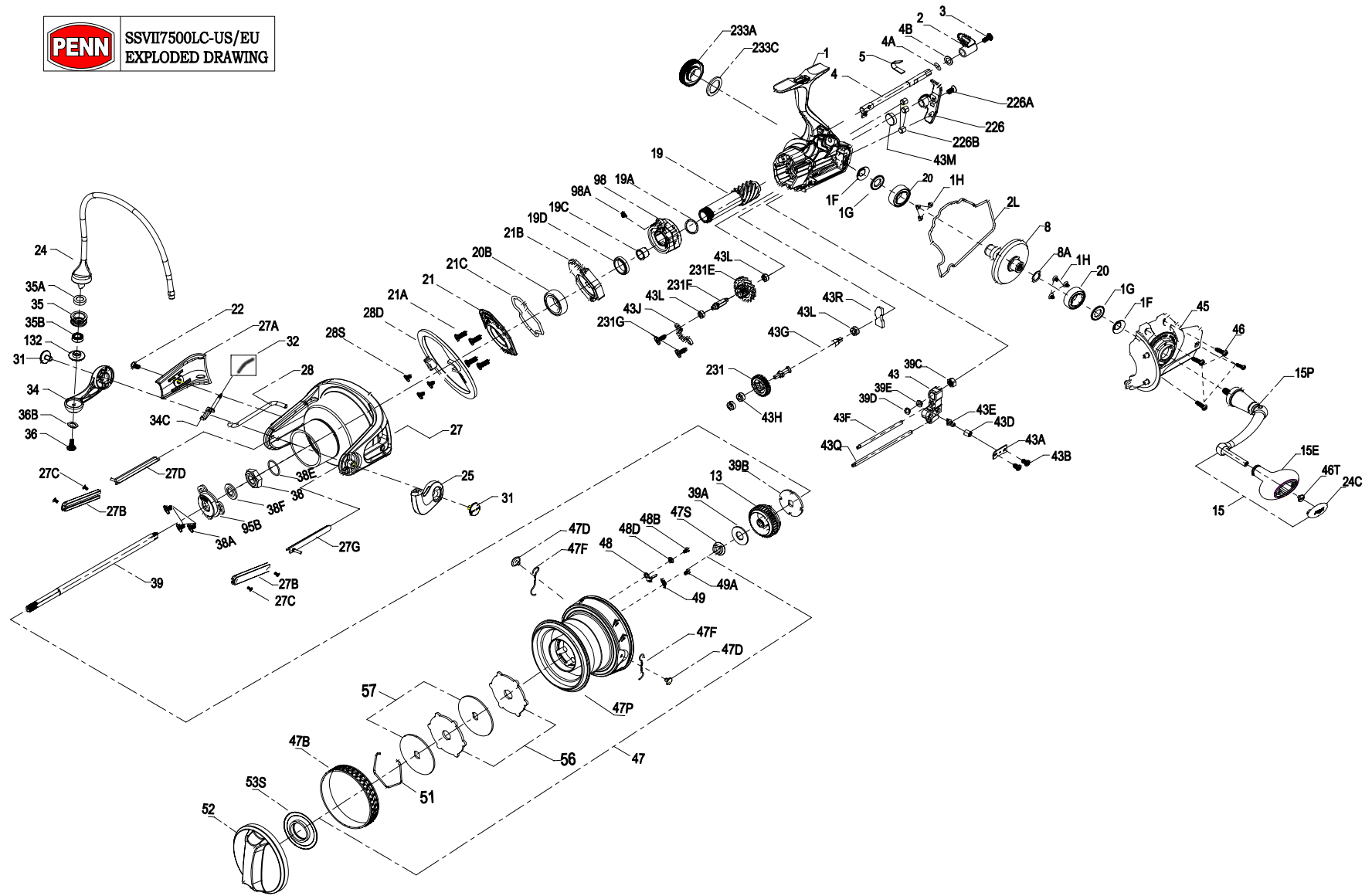




SSVII7500LC-US/EU  
EXPLODED DRAWING





SSVII7500LC-US/EU  
EXPLODED DRAWING

KEY NO.	PART NO.	PENN STYLE NO.	DESCRIPTION
1	1611031	1-SSVII7500LC-US	Body Assembly
1	1611032	1-SSVII7500LC-EU	Body Assembly
1F	1419019	1F-SLA5500	Body Side Seal
1G	1419020	1G-SLA5500	Lock Plate
1H	1418957	1H-SL3500	Screw
2	1341498	2-SSV7500LC	A/R Button
2L	1494867	2L-SSVI7500LC	Body Seal
3	1341500	3-SSV7500LC	Screw
4	1494868	4-SSVI7500LC	A/R Lever
4B	1361929	4A-SSV7500LC	A/R Lever Washer
5	1483180	5-CFTII5000LC	A/R Spring
8	1494869	8-SSVI7500LC	Drive Gear
8A	1277146	8A-SSV7500	Drive Gear Shim Washer
13	1347065	13-SSV7500LC	Click Gear
15	1494870	15-SSVI7500LC	Handle Assembly
15E	1494749	15E-SSVI6500LL	Handle Knob
19	1494871	19-SSVI7500LC	Pinion Gear
19A	1259612	19A-SSV7500LC	Washer
19C	1385683	19C-CLA8000	Pinion Gear Bushing
19D	1341509	19D-SSV7500LC	Bushing
20	1308090	20-CFT5000	Ball Bearing
20B	1344681	20B-SSV7500LC	Ball Bearing
21	1494872	21-SSVI7500LC	Ball Bearing Retainer
21A	1277044	21A-SSV5500	Screw
21B	1494873	21B-SSVI7500LC	Pinion Bearing Collar
21C	1494874	21C-SSVI7501LC	Pinion Bearing Collar Seal
22	1381395	22-SSV7500LC	Screw
24	1494875	24-SSVI7500LC	Bail Assembly
24C	1494753	24C-SSVI6500LL	Handle Knob Cap
25	1385663	25-CLA8000	Bail Holder
27	1494876	27-SSVI7500LC	Rotor
27A	1494877	27A-SSVI7500LC	Rotor Cover
27B	1494878	27B-SSVI7500LC	Line Guard Holder
27C	1341516	27C-SSV7500LC	Screw
27D	1494879	27D-SSVI7500LC	Line Guard
27E	1381396	27E-SSV7500LC	Screw
28	1494880	28-SSVI7500LC	Rotor Trip Lever
28D	1494881	28D-SSVI7500LC	Rotor Brake
28E	1341520	28E-SSV7500LC	Brake Retainer Plate
28S	1277054	28S-SSV7500LC	Screw
31	1277055	31-SSV5500	Screw
32	1494882	32-SSVI7500LC	Bail Spring
34	1385667	34-CLA8000	Bail Arm
34C	1277164	34C-SSV7500	Pivot Arm
35	1457403	35-SLAIIII6500HS	Line Roller
35A	1457404	35A-SLAIIII6500HS	Line Roller Bushing
35B	1377606	35B-BTLII8000LC	Ball Bearing
36	1422399	36-SLA9500	Line Roller Screw
36B	1417809	36B-CLA6000	Bail Arm Screw Washer
38	1419103	38-SLA7500	Rotor Nut
38A	1277063	38A-SSV5500	Screw
38E	1302502	38E-SSV3500	Bearing Retainer O-Ring
38F	1419080	39F-SLA7500	Rotor-Main Shaft Seal

KEY NO.	PART NO.	PENN STYLE NO.	DESCRIPTION
39	1494883	39-SSVI7500LC-US	Main Shaft
39	1494884	39-SSVI7500LC-EU	Main Shaft
39A	1341524	39A-SSV7500LC	Spool Adjust Washer
39B	1341525	39B-SSV7500LC	Main Shaft Washer
39C	1259637	39C-7000AF	Main Shaft Nut
39D	1483228	39D-CFTII8000LC	Rubber Pad
39E	1483229	39E-CFTII8000LC	Fixing Plate
43	1259636	43-AF8000LC	Worm O/S Slider
43A	1259635	43A-AF7000LC	Slider Retainer Plate
43B	1276992	14-SSV6500LL	Screw
43D	1122193	43D-7000AF	Guide Claw Bushing
43E	1122192	43E-7000AF	Guide Claw
43F	1259623	43F-AF8000LC	Right Guide Shaft
43G	1494885	43G-SSVI7500LC	Worm Shaft
43H	1377609	43H-BTLII8000LC	Ball Bearing
43J	1259620	43J-7000AF	Top Retainer Plate
43L	1341533	43L-SSV7500LC	Bushing
43M	1341534	43M-SSV7500LC	Worm Shaft Seal
43Q	1259626	43Q-AF8000LC	Left Guide Shaft
43R	1259627	43J-AF8000LC	Rear Retainer Plate
45	1494886	45-SSVI7500LC	Body Cover Assembly
46	1381400	46-SSV7500LC	Screw
46T	1494762	46T-SSVI6500LL	Screw
47	1611033	47-SSVII7500LC	Spool Assembly
47B	1341538	47B-SSV7500LC	Spool Band
47D	1483213	47D-CFTII8000LC	Line Clip
47F	1259575	47F-7000AF	Line Clip Spring
47P	1611034	47P-SSVII7500LC	Spool
47S	1484890	47S-SSVI7500LC	Seal
48	1259577	13-7000AF	Spool Click Plate
48D	1341546	48D-SSV7500LC	Spool Clicker Spacer Ring
49	1259579	49-7000AF	Spool Click Spring
49A	1341547	49A-SSV7500LC	Screw
51	1378418	51-BTLII7000LC	Drag Washer Retainer
52	1494891	52-SSVI7500LC-US	Drag Knob Assembly
52	1494892	52-SSVI7500LC-EU	Drag Knob Assembly
53S	1483237	53S-CFTII8000LC	Drag Knob Seal
56	1341550	56-SSV7500LC	Drag Friction Washer
57	1341551	57-SSV7500LC	Keyed Drag Washer
95B	1419114	95B-SLA7500	Rotor Nut Locking Plate
98	1259618	98-7000AF	One Way Clutch Bearing Assembly
98A	1361930	98A-SSV7500LC	Clutch Assembly Spring
132	1457405	132-SLAIIII6500HS	Line Roller Collar
226	1494893	226-SSVI7500LC	Rear Cover
226A	1341553	226A-SSVI7500LC	Screw
226B	1341554	226B-SSVI7500LC	Body Rear Seal
231	1259624	231-AF8000LC	O/S Gear
231E	1259622	231E-7000AF	Slow O/S Gear
231F	1259621	231F-7000AF	Slow O/S Gear Pin
231G	1277070	231G-SSV5500	Screw
233A	1419118	233A-SLA7500	Handle Cap Assembly
233C	1419076	233C-SLA5500	Handle Cap Seal



Thank you for your recent PENN gear purchase. No matter where you fish or what you fish for, you can depend PENN to perform in any battle day in and day out. Now it's time to get your product registered and get out on the water.

<https://register.pennfishing.com>