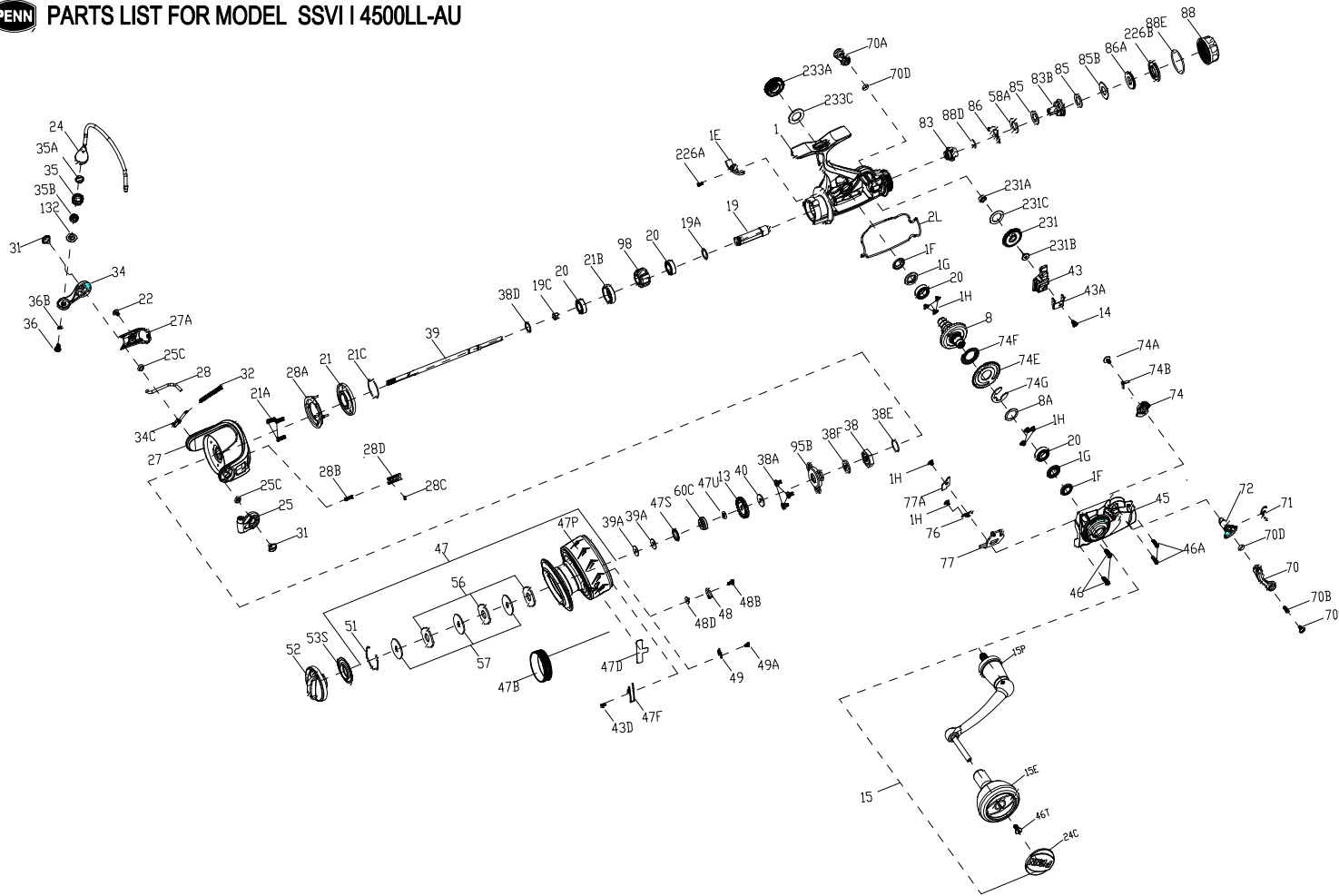




PARTS LIST FOR MODEL SSVI | 4500LL-AU



KEY NO.	PART NO.	PENN STYLE NO.	DESCRIPTION
38	1418993	38-SLA3500	Rotor Nut
38A	1385554	38A-CLA2000	Rotor Nut Lock Plate Screw (3req.)
38D	1257343	38D-SLA3500	Washer
38E	1418958	38E-SLA3500	Pinion Gear Seal
38F	1418959	38F-SLA3500	Rotor-Main Shaft Seal
39	1494736	39-SSVI4500LL	Main Shaft
39A	1494694	39A-SSVI2500LL	Spool Adjust Washer (2req.)
40	1422917	40-SLA3500	Washer
43	1494737	43-SSVI4500LL	Oscillation Slider
43A	1276996	43A-SSV4500LL	Oscillation Slider Guide
43D	1483105	43B-CFTI14000LC	Screw
45	1494738	45-SSVI4500LL	Body Cover Assembly
46	1276949	46-SSV3500	Body Cover Screw (2req.)
46A	1277128	46A-SSV6500LL	Body Cover Screw (2req.)
46T	1277046	22-SSV5500	Rotor Cover Screw
47	1611020	47-SSVII4500LL	Spool Assembly
47B	1277076	47B-SSV4500	Spool Band
47D	1611026	47D-SSVI16500LL	Line Clip
47F	1612322	SSVII4500LL	Line Clip Retainer
47P	1611021	47P-SSVII4500LL	Spool
47S	1494699	47S-SSVI2500LL	Seal
47U	1494700	47U-SSVI2500LL	Seal
48	1385578	48-CLA3000	Spool Click Plate
48B	1385581	48B-CLA3000	Spool Clicker Spring Screw
48D	1385579	48D-CLA3000	Spool Clicker Spacer Ring
49	1259579	49-7000AF	Spring
49A	1294638	49A-CLA2000	Screw (2req.)
51	1277085	51-SSV5500	Drag Washer Retainer
52	1494701	52-SSVI2500LL	Drag Knob Assembly
53S	1447888	53S-CFTI13000	Drag Knob Seal
56	1494702	56-SSVI2500LL	Drag Friction Washer (3req.)
57	1494703	57-SSVI2500LL	Keyed Drag Washer (3req.)
58A	1494704	58A-SSVI2500LL	Eared Washer
60C	1494705	60C-SSVI2500LL	Spool Support Sleeve
70	1494706	70-SSVI2500LL	Lever Left
70A	1494707	70A-SSVI2500LL	Lever Right
70B	1277002	70B-SSV4500LL	Drag Switch Lever Screw
70C	1277003	70C-SSV4500LL	R-Drag Switch Lever Screw
70D	1494708	70D-SSVI2500LL	O-Ring (2req.)
71	1494709	71-SSVI2500LL	Spring
72	1494710	72-SSVI2500LL	Live Liner Drag Switch Cam
74	1494741	74-SSVI4500LL	Cam Gear
74A	1496533	74A-SLA7500	Screw
74B	1494712	74B-SSVI2500LL	Cam Gear Spring
74E	1494713	74E-SSVI2500LL	Live Liner Gear
74F	1494714	74F-SSVI2500LL	Live Liner Gear Spring
74G	1277014	74G-SSV4500LL	Three Pawl Lever E-clip
76	1277134	76-SSV4500LL	Live Liver Claw Spring
77	1494742	77-SSVI4500LL	Live Liner Stop Claw
77A	1494716	77A-SSVI2500LL	Live Liner Plate
83	1494717	83-SSVI2500LL	Rear Drag Ratchet
83B	1494718	83B-SSVI2500LL	Rear Drag Support Assembly
85	1494719	85-SSVI2500LL	Rear Drag Washer (2req.)
85B	1494720	85B-SSVI2500LL	Rear Drag Eared Washer
86	1494743	86-SSVI4500LL	Spring
86A	1494722	86A-SSVI2500LL	Rear Drag Nut
88	1611004	88-SSVI2500LL	Rear Drag Knob
88E	1494724	88E-SSVI2500LL	O-Ring
88D	1494725	88D-SSVI2500LL	Retainer
95B	1419009	95B-SLA3500	Rotor Nut Locking Plate
98	1276966	98-SSV3500	One Way Clutch Bearing Assembly
132	1474156	132-SLLAIII3500	Line Roller Collar
226A	1385651	226A-CLA2000	Rear Cover Screw
226B	1494727	226B-SSVI2500LL	Knob Seal
231	1494744	231-SSVI4500LL	Oscillation Gear
231A	1385595	231A-CLA2000	Oscillation Gear Bushing
231B	1307857	231B-SSV3500	O/S Gear Screw
231C	1385594	231C-CLA2000	O/S Gear Washer
233A	1419015	233A-SLA3500	Handle Cap Assembly
233C	1419016	233C-SLA3500	Handle Cap Seal

KEY NO.	PART NO.	PENN STYLE NO.	DESCRIPTION
1	1611019	1-SSVI4500LL	Body Assembly
1E	1418954	1E-SLA3500	Body Slope
1F	1418955	1F-SLA3500	Body Ball Bearing Seal
1G	1418956	1G-SLA3500	Body Side Seal Lock Plate
1H	1418957	1H-SLA3500	Body Side Screw
2L	1494730	2L-SSVI4500LL	Body Seal
8	1611008	8-SSVI2500LL	Drive Gear
8A	1418973	8A-SLA3500	Drive Gear Shim Washer
13	1418974	13-SLA3500	Click Gear
14	1276992	14-SSV6500LL	Oscillation Slider Retainer Screw
15	1611005	15-SSVI2500LL	Handle Assembly
15E	1611006	15E-SSVI2500LL	Handle Knob
15P	1494680	15P-SSVII2500LL	Sub-Handle Assembly
19	1494731	19-SSVI4500LL	Pinion Gear
19A	1277424	19A-SSV3500	Pinion Gear Washer
19C	1418978	19C-SLA3500	Pinion Gear Bushing
20	1385530	20-CLA3000	Sealed Ball Bearing (4req.)
21	1418979	21-SLA3500	Pinion Bearing Retainer
21A	1418980	21A-SLA3500	Retainer Screw(3req.)
21B	1385535	21B-CLA3000	Ball Bearing Bushing
21C	1418981	21A-SLA3500	Body Head Seal

KEY NO.	PART NO.	PENN STYLE NO.	DESCRIPTION
22	1092845	22-CLA2000	Rotor Cover Screw
24	1494732	24-SSVI4500LL	Bail Assembly
24C	1611007	24C-SSVI2500LL	Handle Knob Cap
25	1385539	25-CLA3000	Bail Holder
25C	1385540	25C-CLA3000	Bail Holder Bushing(2req.)
27	1494733	27-SSVI4500LL	Rotor
27A	1494734	27A-SSVI4500LL	Rotor Cover
28	1494735	28-SSVI4500LL	Rotor Trip Lever
28A	1418967	28A-SLA3500	Rotor brake
28B	1385546	28B-CLA3000	Compressing Spring
28C	1385547	28C-CLA3000	O Ring
28D	1385545	28D-CLA3000	Damper Holder
31	1385619	31-CLA2000	Bail Arm Screw(2req.)
32	1385549	32-CLA3000	Bail Spring
34	1385550	34-CLA3000	Bail Arm
34C	1385551	34C-CLA3000	Pivot Arm
35	1474154	35-SLAIIII3500	Line Roller
35A	1474155	35A-SLAIIII3500	Line Roller Bearing
35B	1385552	36-CLA3000	Line Roller Sealed Ball Bearing
36	1277061	36-SSV5500	Line Roller Screw
36B	1417809	36B-CLA6000	Bail Arm Screw Washer

407-SSVII4500LL-AU
Rev. 01 06-07-2023
1595379