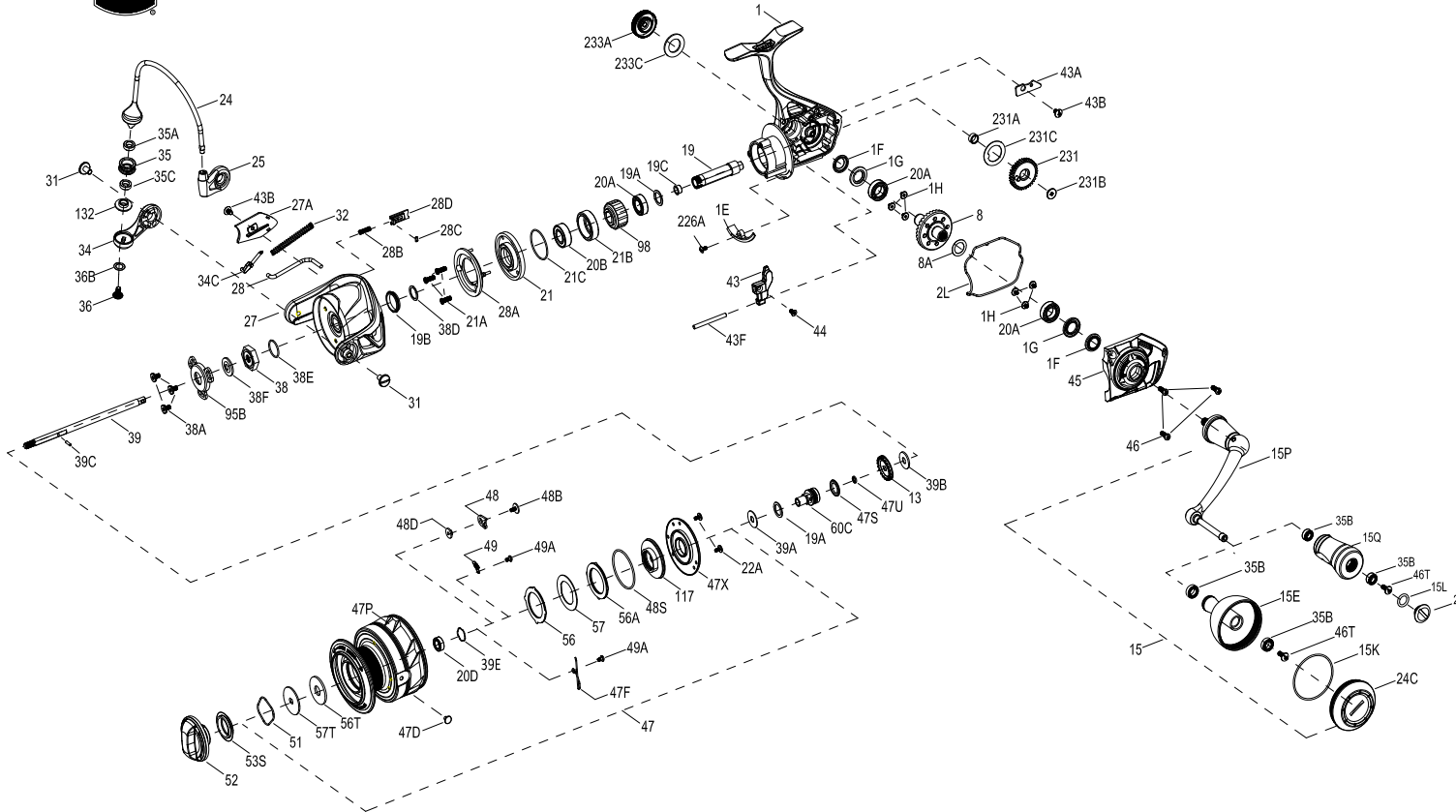




PARTS LIST FOR MODEL SLAMMER IV 4500/4500HS



KEY NO.	PART NO.	PENN STYLE NO.	DESCRIPTION
34C	1385551	34C-CLA3000	Pivot Arm
35	1559204	35-SLAIV3500	Line Roller
35A	1474155	35A-SLAIII3500	Line Roller Bushing
35B	1418393	35B-CLA3000	Ball Bearing (2req.)
35C	1525199	35C-CLAI3000	Bearing
36	1277061	36-SSV5500	Line Roller Screw
36B	1417809	36B-CLA6000	Bail Arm Screw Washer
38	1418993	38-SLA3500	Rotor Nut
38A	1119121	20C-7000AF	Screw (3req.)
38D	1559205	38D-SLAIV3500	Washer
38E	1418958	38E-SLA3500	Pinion Gear Seal
38F	1418959	38F-SLA3500	Rotor-Main Shaft Seal
39	1559244	39-SLAIV4500	Main Shaft
39A	1559275	39A-SLAIV5500	Washer
39B	1422917	40-SLA3500	Washer
39C	1559217	39C-SLAIV3500	Pin
39E	1559220	39E-SLAIV3500	Retainer
43	1418996	43-SLA3500	Oscillation Slider
43A	1418997	43A-SLA3500	Slider Retainer Plate
43B	1559161	43B-SLAIV2500	Screw(2req.)
43F	1385563	43F-CLA3000	Guide Shaft
44	1525911	44-CLAI3000	Screw
45	1559245	45-SLAIV4500	Body Cover Assembly
45	1559258	45-SLAIV4500HS	Body Cover Assembly
46	1385567	46-CLA3000	Body Cover Screw (3req.)
46T	1341500	3-SSV7500LC	A/R Button Screw
47	1559246	47-SLAIV4500	Spool Assembly
47	1559259	47-SLAIV4500HS	Spool Assembly
47D	1276953	47D-SSV3500	Line Clip
47F	1419068	47F-SLA65000	Line Clip Retainer
47P	1559247	47P-SLAIV4500	Spool
47P	1559260	47P-SLAIV4500HS	Spool
47S	1494699	47S-SSV12500LL	Seal
47U	1494700	47U-SSV12500LL	Seal
47X	1559221	47X-SLAIV3500	Drag Cover
48	1419069	48-SLA5500	Spool Click Plate
48B	1559212	48B-SLAIV3500	Screw
48D	1385579	48D-CLA3000	Spool Clicker Spacer Ring
48S	1559211	48S-SLAIV3500	Seal
49	1259579	49-7000AF	Spring
49A	1559283	49A-SLAIV5500	Screw
51	1277085	51-SSV5500	Drag Washer Retainer
52	1559213	52-SLAIV3500	Drag Knob Assembly
52	1559900	52-SLAIV4500HS	Drag Knob Assembly
53S	1385583	53S-CLA3000	Drag Knob Seal
56	1418961	56-SLA3500	Drag Friction Washer
56A	1418962	56A-SLA3500	Drag Friction Washer
56T	1277089	56T-SSV5500	Drag Friction Washer
57	1419008	57-SLA3500	Keyed Drag Washer
57T	1276985	57T-SSV4500	Keyed Drag Washer
60C	1559214	60C-SLAIV3500	Spool Support Sleeve
95B	1419009	95B-SLA3500	Rotor Nut Locking Plate
98	1276966	98-SSV3500	Clutch/Sleeve Assembly
117	1559215	117-SLAIV3500	Drag Drive Plate
132	1474156	132-SLAIII3500	line roller collar
226A	1525914	226A-CLAI3000	Screw
231	1419014	231-SLA4500	Oscillation Gear
231A	1385595	231A-CLA2000	O/S Gear Bushing
231B	1307857	231B-SSV3500	Oscillation Gear Screw
231C	1525915	231C-CLAI3000	Oscillation Gear Washer
233A	1559216	233A-SLAIV3500	Handle Cap
233C	1419016	233C-SLA3500	Handle Cap Seal

KEY NO.	PART NO.	PENN STYLE NO.	DESCRIPTION
1	1559254	1-SLAIV4500HS	Body Assembly
1	1559239	1-SLAIV4500	Body Assembly
1E	1418954	1E-SLA3500	Body Slope
1F	1418955	1F-SLA3500	Body Ball Bearing Seal(2req.)
1G	1418956	1G-SLA3500	Body Side Seal Lock Plate(2req.)
1H	1418957	1H-SLA3500	Body Side Screw(6req.)
2L	1559194	2L-SLAIV3500	Seal
8	1418972	8-SLA3500	Drive Gear
8	1559172	8-SLAIV2500HS	Drive Gear
8A	1257352	8A-CLA2000	Shim
13	1418974	13-SLA3500	Click Gear
15	1559195	15-SLAIV3500	Handle Assembly
15	1559255	15-SLAIV4500HS	Handle Assembly
15E	1559196	15E-SLAIV3500	Handle Knob
15K	1418968	15K-SLA3500	Handle Knob Cap Seal
15L	1417804	15L-CLA2000	Handle Knob Seal
15P	1422394	15P-SLA3500	Sub-Handle Assembly
15Q	1559197	15Q-SLAIV3500	Handle Knob Assembly
19	1559198	19-SLAIV3500	Pinion Gear
19	1559256	19-SLAIV4500HS	Pinion Gear
19A	1277424	19A-SSV3500	Pinion Gear Washer(2req.)
19B	1559218	19B-SLAIV3500	Seal
19C	1418978	19C-SLA3500	Pinion Gear Bushing

KEY NO.	PART NO.	PENN STYLE NO.	DESCRIPTION
20A	1385532	20C-CLA3000	Sealed Ball Bearing(3req.)
20B	1385531	20B-CLA3000	Sealed Ball Bearing
20D	1385604	20D-CLA2000	Sealed Ball Bearing
21	1418979	21-SLA3500	Ball Bearing Retainer
21A	1418980	21A-SLA3500	Retainer Screw(3req.)
21B	1385535	21B-CLA3000	Pinion Ball Bearing Collar
21C	1418981	21C-SLA3500	Body Head Seal
22A	1418982	22A-SLA3500	Drag Cover Screw(2req.)
24	1559240	24-SLAIV4500	One Piece Bail
24C	1559200	24C-SLAIV3500	Handle Knob Cap
24C	1559257	24C-SLAIV4500HS	Handle Knob Cap
24D	1417806	24C-CLA3000	Handle Knob Cap
25	1385539	25-CLA3000	Bail Holder
27	1559241	27-SLAIV4500	Rotor
27A	1559242	27A-SLAIV4500	Rotor Cover
28	1559243	28-SLAIV4500	Rotor Trip Lever
28A	1418967	28D-SLA3500	Rotor Brake
28B	1346982	28B-CLA2000	Spring
28C	1385547	28C-CLA3000	Rotor Brake Seal
28D	1385545	28D-SLA3000	Rotor Brake
31	1276936	31-SSV3500	Bail Arm Screw (2req.)
32	1385549	32-CLA3000	Bail Spring
34	1385550	34-CLA3000	Bail Arm

407-SLAIV4500 Rev.00 4-20-2021
 407-SLAIV4500HS Rev.00 4-20-2021
 1545762-SLAIV4500
 1545763-SLAIV4500HS