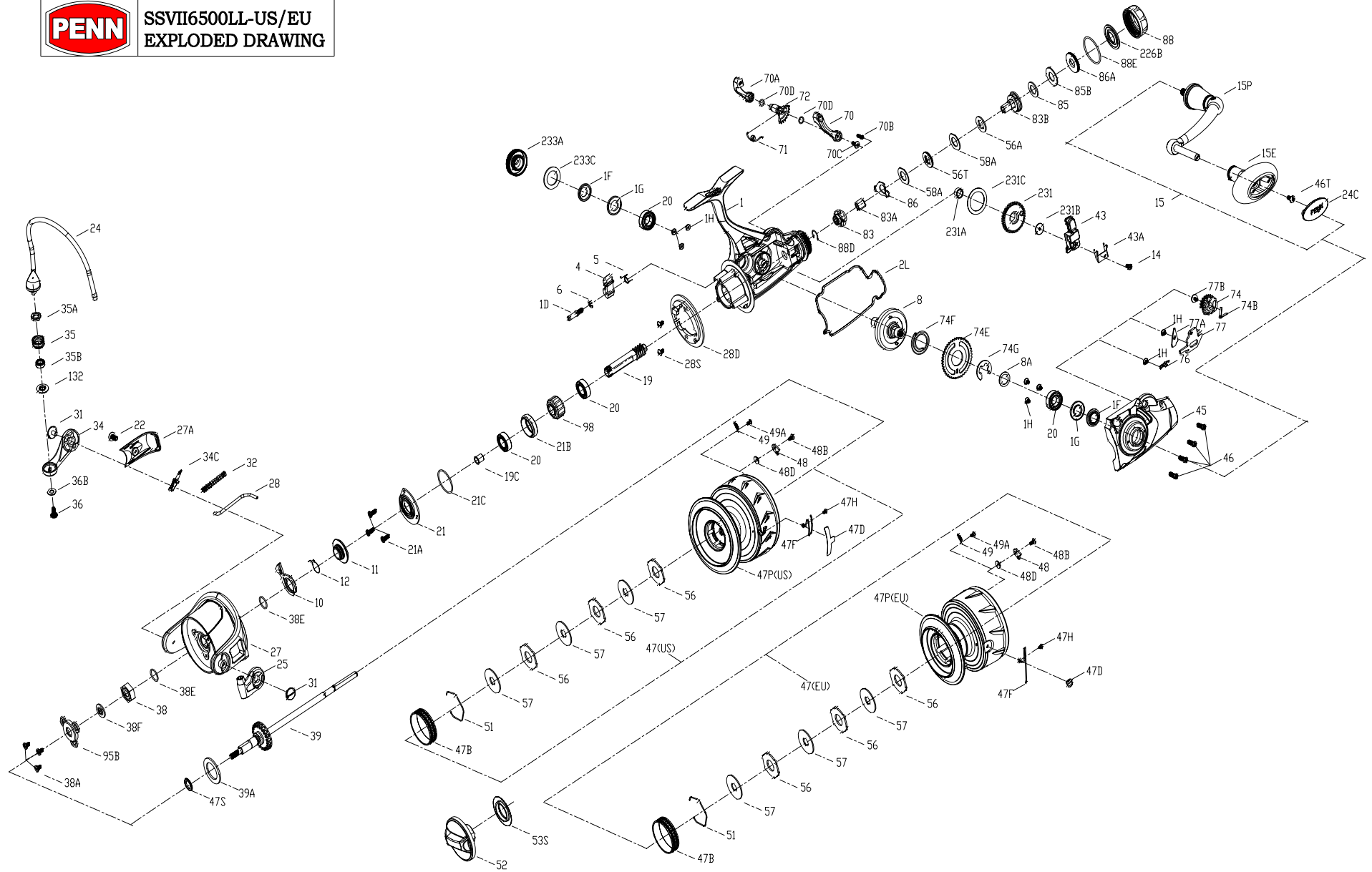




SSVII6500LL-US/EU
EXPLODED DRAWING





**SSVII6500LL-US/EU
EXPLODED DRAWING**

KEY NO.	PART NO.	PENN STYLE NO.	DESCRIPTION	KEY NO.	PART NO.	PENN STYLE NO.	DESCRIPTION
1	1611025	1-SSVII6500LL	Body Assembly	47D	1611026	47D-SSVII6500LL-US	Line Clip
1D	1277140	1D-SSV7500	A/R Pawl Post	47D	1494764	47D-SSVII6500LL-EU	Line Clip
1F	1419019	1F-SLA5500	Body Side Seal	47F	1611027	47F-SSVII6500LL-US	Line Clip Retainer
1G	1419020	1G-SLA5500	Body Side Seal Lock Plate	47F	1277080	47F-SSVII6500LL-EU	Line Clip Retainer
1H	1418957	1H-SLA3500	Body Side Screw	47H	1612635	47H-SSVII6500LL-US	Spool Click Spring Screw
2L	1494746	2L-SSVI6500LL	Body Seal	47H	1294638	47H-CLA2000-EU	Spool Click Spring Screw
4	1389459	4-CLA6000	A/R Pawl	47P	1611029	47P-SSVII6500LL-US	Spool
5	1339474	5-CLA5000	Pawl Spring	47P	1612634	47P-SSVII6500LL-EU	Spool
6	1277144	6-SSV7500	Retainer Clip	47S	1494699	47S-SSVI2500LL	Seal
8	1494747	8-SSVI6500LL	Drive Gear Assembly	48	1385578	48-CLA3000	Spool Click Plate
8A	1277037	8A-SSV5500	Drive Gear Shim Washer	48B	1385581	48B-CLA3000	Screw
10	1419936	10-CLA6000	A/R Pawl Holder	48D	1385579	48D-CLA3000	Spool Clicker Spacer Ring
11	1419028	11-SLA5500	A/R Bushing	49	1385580	49-CLA3000	Spool Click Spring
12	1339487	12-CLA5000	A/R Bushing Spring	49A	1341547	49A-SSV7500LC	Screw
14	1276992	14-SSVI6500LL	O/S Slider Retainer Screw	51	1447925	51-CFTII5000	Drag Washer Retainer
15	1494748	15-SSVI6500LL	Handle Assembly	52	1494766	52-SSVI6500LL	Drag Knob Assembly
15E	1494749	15E-SSVI6500LL	Handle Knob	53S	1447927	53S-CFTII5000	Drag Knob Seal
15P	1494750	15P-SSVI6500LL	Sub-Handle Assembly	56	1339557	56-CLA5000	Drag Friction Washer
19	1494751	19-SSVI6500LL	Pinion Gear	56A	1494767	56A-SSVI6500LL	Friction Washer
19C	1419023	19C-SLA5500	Pinion Gear Bushing	56T	1494768	56T-SSVI6500LL	Drag Washer
20	1308090	20-CFT5000	Ball Bearing	57	1339558	57-CLA5000	Keyed Drag Washer
21	1419025	21-SLA5500	Ball Bearing Retainer	58A	1494769	58A-SSVI6500LL	Eared Washer
21A	1277154	21A-SSV7500	Screw	70	1494770	70-SSVI6500LL	Lever Left
21B	1419024	21B-SLA5500	Pinion Bearing Collar	70A	1494771	70A-SSVI6500LL	Lever Right
21C	1385684	21C-CLA8000	O Ring	70B	1277128	70B-SSV6500LL	Screw
22	1276928	22-SSV3500	Rotor Cover Screw	70C	1277003	70C-SSV4500LL	Screw
24	1494752	24-SSVI6500LL	Bai Assembly	70D	1494708	70D-SSVI2500LL	O-Ring
24C	1494753	24C-SSVI6500LL	Handle Knob Cap	71	1494772	71-SSVI6500LL	Spring
25	1339500	25-CLA5000	Bail Holder	72	1494773	72-SSVI6500LL	Switch Cam
27	1494754	27-SSVI6500LL	Rotor	74	1494774	74-SSVI6500LL	Cam Gear
27A	1494755	27A-SSVI6500LL	Rotor Cover	74B	1494775	74B-SSVI6500LL	Spring
28	1494756	28-SSVI6500LL	Rotor Trip Lever	74E	1494776	74E-SSVI6500LL	Gear
28D	1447674	28D-SLAIII6500HS	Rotor Brake	74F	1494777	74F-SSVI6500LL	Spring
28S	1277063	38A-SSV55000	Screw	74G	1277014	74G-SSV4500LL	Live Liner Three Pawl Lever E-Clip
31	1277055	31-SSV5500	Screw	76	1494778	76-SSVI6500LL	Spring
32	1389467	32-CLA6000	Bail Spring	77	1494779	77-SSVI6500LL	Stop Claw
34	1389468	34-CLA6000	Bail Arm	77A	1494780	77A-SSVI6500LL	Plate
34C	1389469	34C-CLA6000	Pivot Arm	77B	1289972	77B-SSV4500LL	Screw
35	1457403	35-SLAIII6500HS	Line Roller	83	1494781	83-SSVI6500LL	Ratchet
35A	1457404	35A-SLAIII6500HS	Line Roller Bushing	83B	1494782	83B-SSVI6500LL	Support Assembly
35B	1377606	35A-BTLII8000LC	Ball Bearing	85	1494783	85-SSVI6500LL	Friction Washer
36	1422399	36-SLA9500	Line Roller Screw	85B	1494784	85B-SVI6500LL	Eared Washer
36B	1417809	36B-CLA6000	Bail Arm Screw Washer	86	1494785	86-SSVI6500LL	Spring
38	1419051	38-SLA5500	Rotor Nut	86A	1494786	86A-SSVI6500LL	Nut
38A	1119121	20C-7000AF	Screw	88	1611030	88-SSVII6500LL	Knob
38E	1418958	38E-SLA3500	Pinion Gear Seal	88D	1494788	88D-SSVI6500LL	Retainer
38F	1419052	38F-SLA5500	Rotor-Main Shaft Seal	88E	1494789	88E-SSVI6500LL	O-Ring
39	1494757	39-SSVI6500LL	Main Shaft Assembly	95B	1419009	95B-SLA3500	Rotor Nut Locking Plate
39A	1494758	39A-SSVI6500LL	Washer	98	1277094	98-SSV5500	One Way Clutch Bearing Assembly
43	1494759	43-SSVI6500LL	Slider	132	1457405	132-SLAIII6500HS	Line Roller Collar
43A	1494760	43A-SSVI6500LL	Slider Guide	226B	1494790	226B-SSVI6500LL	Seal
45	1494761	45-SSVI6500LL	Body Cover Assembly	231	1389600	231-CLA6000	O/S Gear
46	1277074	46-SSV5500	Body Cover Screw	231A	1339566	231A-CLA5000	O/S Gear Bushing
46T	1494762	46T-SSVI6500LL	Screw	231B	1277100	231B-SSV5500	O/S Gear Screw
47	1611028	47-SSVII6500LL-US	Spool Assembly	231C	1389603	231C-CLA6000	O/S Gear Washer
47	1612633	47-SSVII6500LL-EU	Spool Assembly	233A	1419075	233A-SLA5500	Handle Cap Assembly
47B	1277076	47B-SSV5500	Spool Band	233C	1419076	233C-SLA5500	Handle Cap Seal



Thank you for your recent PENN gear purchase. No matter where you fish or what you fish for, you can depend PENN to perform in any battle day in and day out. Now it's time to get your product registered and get out on the water.

<https://register.pennfishing.com>