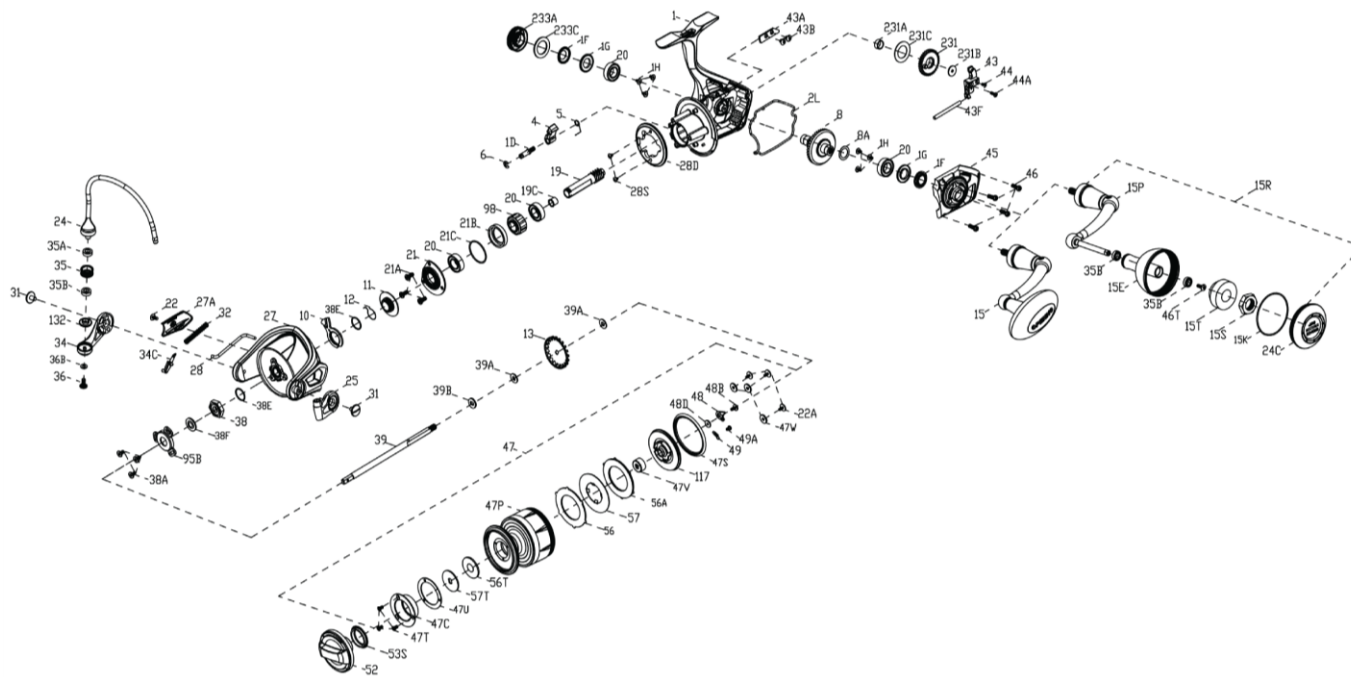




PARTS LIST FOR MODEL SLAMMER III 8500 HS



KEY NO.	PART NO.	PENN STYLE NO.	DESCRIPTION	KEY NO.	PART NO.	PENN STYLE NO.	DESCRIPTION
1	1447681	1-SLAI118500HS	Body Assembly	15P	1447688	15P-SLAI118500HS	Sub Handle Assembly
1D	1277140	1D-SSV7500	A/R Pawl Post	15R	1447690	15R-SLAI118500HS	Spare Handle Assembly
1F	1419083	1F-SLA7500	Body Side Seal	15S	1447679	15S-SLAI116500HS	Hexnut
1G	1419082	1G-SLA7500	Body Side Seal Lock Plate	15T	1447680	15T-SLAI116500HS	Clump Weight
1H	1418957	1H-SLA3500	Body Side Screw	19	1447685	19-SLAI118500HS	Pinion Gear
2L	1419086	2L-SLA7500	Body Seal	19C	1419092	19C-SLA7500	Pinion Gear Bushing
4	1277142	4-SSV7500	A/R Pawl	20	1277152	20-SSV7500	Ball Bearing
5	1277143	5-SSV7500	Pawl Spring	21	1419093	21-SLA7500	Ball Bearing Retainer
6	1277144	6-SSV7500	Retainer Clip	21A	1277154	21A-SSV7500	Pinion Retainer Screw
8	1447682	8-SLAI118500HS	Drive Gear	21B	1419094	21B-SLA7500	Pinion Bearing Collar
8A	1277037	8A-SSV5500	Drive Gear Shim Washer	21C	1385684	21C-CLA8000	O Ring
10	1277147	10-SSV7500	A/R Pawl Holder	22	1277046	22-SSV5500	Rotor Cover Screw
11	1479088	11-SLA7500	A/R Bushing	22A	1496533	22A-SLA7500	Screw
12	1309001	12-SSV9500	A/R Bushing Spring	24	1457804	24-SLAI118500HS	One Piece Bail
13	1419089	13-SLA7500	Click Gear	24C	1447673	24C-SLAI116500HS	Handle Knob Cap
15	1447689	15-SLAI118500HS	Handle Assembly	25	1385663	25-CLA8000	Bail Holder
15E	1447670	15E-SLAI116500HS	Handle Knob	27	1419098	27-SLA8500	Rotor
15K	1419073	15K-SLA5500	Handle Knob Cap Seal	27A	1419099	27A-SLA7500	Rotor Cover
				28	1419101	28-SLA8500	Rotor Trip Lever
				28D	1277161	28D-SSV7500	Rotor Brake
				28S	1277054	28S-SSV5500	Rotor Brake Screw
				31	1277055	31-SSV5500	Bail Arm Screw
				32	1419102	32-SLA7500	Bail Spring
				34	1385667	34-CLA8000	Bail Arm
				34C	1277164	34C-SSV7500	Pivot Arm
				35	1457805	35-SLAI118500HS	Line Roller
				35A	1457806	35A-SLAI118500HS	Line Roller Bushing
				35B	1377606	35A-BTLI18000LC	Line Roller Ball Bearing
				36	1277166	36-SSV7500	Line Roller Screw
				36B	1417809	36B-CLA6000	Bail Arm Screw Washer
				38	1419103	38-SLA7500	Rotor Nut
				38A	1119121	20C-7000AF	Screw
				38E	1302502	332B-SSV3500	Bearing Retainer O Ring
				38F	1419080	38F-SLA7500	Rotor-Main Shaft Seal
				39	1419104	39-SLA7500	Main Shaft
				39A	1277066	39A-SSV5500	Spool Adjust Washer
				39B	1277067	39B-SSV5500	Main Shaft Washer
				43	1419105	43-SLA7500	Oscillation Slider
				43A	1277173	43A-SSV7500	O/S Slider Guide
				43B	1277070	43B-SSV5500	Screw
				43F	1389567	43F-CLA6000	O/S Slider Guide Shaft
				44	1385672	44-CLA8000	Main Shaft Screw
				44A	1447691	44A-SLAI118500HS	Main Shaft Screw
				45	1447684	45-SLAI118500HS	Body Cover Assembly
				46	1277074	46-SSV5500	Body Cover Screw
				46T	1341500	3-SSV7500LC	A/R Button Screw
				47	1447686	47-SLAI118500HS	Spool Assembly
				47C	1419059	47C-SLA5500	Drag Cover
				47P	1447687	47P-SLAI118500HS	Spool
				47S	1419079	47S-SLA7500	Spool Seal
				47T	1339552	47T-CLA5000	Drag Cover Screw
				47U	1418960	47U-SLA3500	Drag Cover Seal
				47V	1419063	47V-SLA5500	Sealed Nut
				47W	1419066	47W-SLA5500	Protective Washer
				48	1419069	48-SLA5500	Spool Click Plate
				48B	1385581	48B-CLA3000	Spool Clicker Spring Screw
				48D	1385579	48D-CLA3000	Spool Clicker Spacer Ring
				49	1259579	49-7000AF	Spring
				49A	1341547	49A-SSV7500LC	Spool Clicker Spring Screw
				52	1419112	52-SLA7500	Drag Knob Assembly
				53S	1339555	53S-CLA5000	Drag Knob Seal
				56	1419077	56-SLA7500	Drag Friction Washer
				56A	1419078	56A-SLA7500	Drag Friction Washer
				56T	1277089	56T-SSV5500	Drag Friction Washer
				57	1419113	57-SLA7500	Keved Drag Washer
				57T	1419058	57T-SLA5500	Keved Drag Washer
				95B	1419114	95B-SLA7500	Rotor Nut Locking Plate
				98	1277190	98-SSV7500	Clutch/Sleeve Assembly
				117	1419115	117-SLA7500	Drag Drive Plate
				132	1457807	132-SLAI118500HS	Line Roller Collar
				231	1419117	231-SLA7500	Oscillation Gear
				231A	1339566	231A-CLA5000	O/S Gear Bushing
				231B	1277100	231B-SSV5500	Gear Screw
				231C	1389603	231C-CLA6000	O/S Gear Washer
				233A	1447683	233A-SLAI118500HS	Handle Cap Assembly
				233C	1419076	233C-SLA5500	Handle Cap Seal

407-SLAI118500HS Rev. 00 04-23-2018
1428933