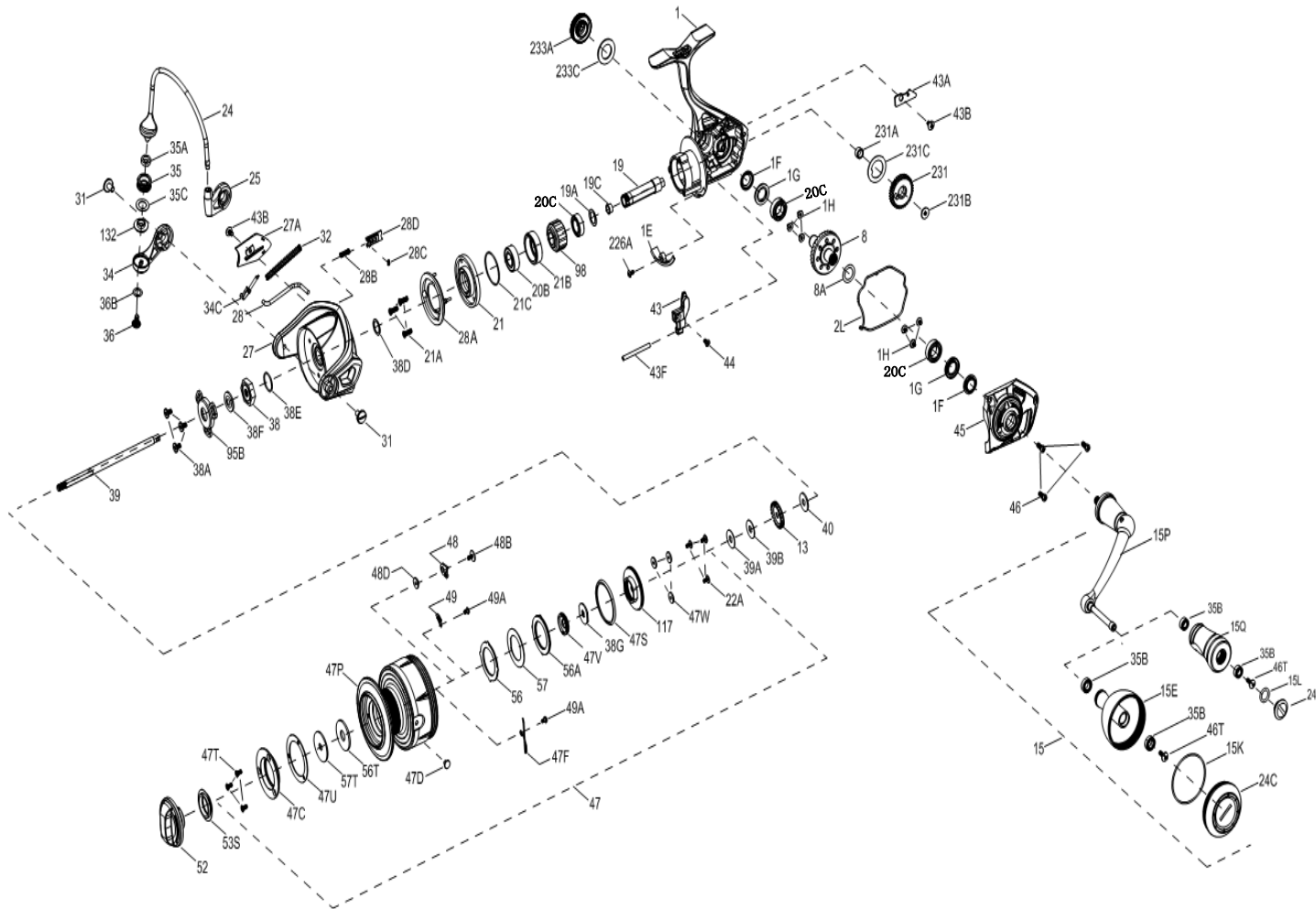




PARTS LIST FOR MODEL SLAMMER III 3500/4500

WARNING: Cancer and Reproductive Harm – www.P65Warnings.ca.gov/products



KEY NO.	PART NO.	DESCRIPTION
28	1418991	28-SLA4500 Rotor Trip Lever
28A	1418967	28D-SLA3500 Rotor Brake
28B	1346982	28B-CLA2000 Spring
28C	1385547	28C-CLA3000 Rotor Brake Seal
28D	1385545	28D-CLA3000 Rotor Brake
31	1276936	31-SSV3500 Bail Arm Screw (2req.)
32	1385549	32-CLA3000 Bail Spring
34	1385550	34-CLA3000 Bail Arm
34C	1385551	34C-CLA3000 Pivot Arm
35	1474154	35-SLAIII3500 Line Roller
35A	1474155	35A-SLAIII3500 Line Roller Ball Bearing
35B	1418393	35B-CLA3000 Ball Bearing (2req.)
35C	1385552	35A-CLA3000 Line Roller Sealed Ball Bearing
36	1277061	36-SSV5500 Line Roller Screw
36B	1417809	36B-CLA6000 Bail Arm Screw Washer
38	1418993	38-SLA3500 Rotor Nut
38A	1119121	20C-7000AF Screw (3req.)
38D	1257343	38D-SLA3500 Rotor Washer
38E	1418958	38E-SLA3500 Pinion Gear Seal
38F	1418959	38F-SLA3500 Rotor-Main Shaft Seal
38G	1418964	38G-SLA3500 Spool-Main Shaft Seal
39	1418994	39-SLA3500 Main Shaft
39	1418995	39-SLA4500 Main Shaft
39A	1276944	39A-SSV3500 Spool Adjust Washer
39B	1276945	39B-SSV3500 Main Shaft Washer
40	1422917	40-SLA3500 Washer
43	1418996	43-SLA3500 Oscillation Slider
43A	1418997	43A-SLA3500 Slider Retainer Plate
43B	1277070	43B-SSV5500 Oscillation Slider Guide Screw (2req.)
43F	1418998	43F-SLA3500 Guide Shaft
44	1126275	44-CLA2000 Screw
45	1418999	45-SLA3500 Body Cover Assembly
45	1419000	45-SLA4500 Body Cover Assembly
46	1385567	46-CLA3000 Body Cover Screw (3req.)
46T	1341500	3-SSV7500LC Screw
47	1419001	47-SLA3500 Spool Assembly
47	1419002	47-SLA4500 Spool Assembly
47C	1385571	47C-CLA3000 Drag Cover
47D	1276953	47D-SSV3500 Line Hook
47F	1385637	47F-CLA2000 Line Clip Retainer
47P	1419004	47P-SLA3500 Spool
47P	1419005	47P-SLA4500 Spool
47S	1418965	47S-SLA3500 Spool Seal
47T	1341544	47T-SSV7500LC Rear Cover Screw(3req.)
47U	1418960	47U-SLA3500 Drag Cover Seal
47V	1418963	47V-SLA3500 Sealed Nut
47W	1418966	47W-SLA3500 Protective Washer (3req.)
48	1385578	48-CLA3000 Spool Click Plate
48B	1385581	48B-CLA3000 Spool Clicker Spring Screw
48D	1385579	48D-CLA3000 Spool Clicker Spacer Ring
49	1259579	49-7000AF Spring
49A	1294638	49A-CLA2000 Screw(2req.)
52	1419007	52-SLA3500 Drag Knob Assembly
53S	1385583	53S-CLA3000 Drag Knob Seal
56	1418961	56-SLA3500 Drag Friction Washer
56A	1418962	56A-SLA3500 Drag Friction Washer.
56T	1277089	56T-SSV5500 Drag Friction Washer
57	1419008	57-SLA3500 Keyed Drag Washer
57T	1276985	57T-SSV4500 Keyed Drag Washer
95B	1419009	95B-SLA3500 Rotor Nut Locking Plate
98	1276966	98-SSV3500 Clutch/Sleeve Assembly
117	1419010	117-SLA3500 Drag Drive Plate
132	1474156	132-SLAIII3500 Line Roller Collar
226A	1385651	226A-CLA2000 Rear Cover Screw
231	1419013	231-SLA3500 Oscillation Gear
231	1419014	231-SLA4500 Oscillation Gear
231A	1385595	231A-CLA2000 Oscillation Gear Bushing
231B	1307857	231B-SSV3500 Oscillation Gear Screw
231C	1385594	231C-CLA2000 O/S Gear Washer
233A	1419015	233A-SLA3500 Handle Cap Assembly
233C	1419016	233C-SLA3500 Handle Cap Seal
19C	1418978	19C-SLA3500 Pinion Gear Bushing
20B	1385532	20B-CLA3000 Sealed Ball Bearing
20C	1385532	20C-CLA3000 Sealed Ball Bearing(3req.)
21	1418979	21-SLA3500 Ball Bearing Retainer
21A	1418980	21A-SLA3500 Retainer Screw(3req.)
21B	1385535	21B-CLA3000 Pinion Ball Bearing Collar
21C	1418981	21C-SLA3500 Body Head Seal
22A	1418982	22A-SLA3500 Drag Cover Screw(3req.)
24	1474153	24-SLAIII3500 One Piece Bail
24	1474157	24-SLAIII4500 One Piece Bail
24C	1418985	24C-SLA3500 Handle Knob Cap
24D	1417806	24C-CLA3000 Handle Knob Cap
25	1385539	25-CLA3000 Bail Holder
27	1418986	27-SLA3500 Rotor
27	1418987	27-SLA4500 Rotor
27A	1418988	27A-SLA3500 Rotor Cover
27A	1418989	27A-SLA4500 Rotor Cover
28	1418990	28-SLA3500 Rotor Trip Lever

KEY NO.	PART NO.	DESCRIPTION
1	1418969	1-SLA3500 Body Assembly
1	1418970	1-SLA4500 Body Assembly
1E	1418954	1E-SLA3500 Body Slope
1F	1418955	1F-SLA3500 Body Ball Bearing Seal(2req.)
1G	1418956	1G-SLA3500 Body Side Seal Lock Plate(2req.)
1H	1418957	1H-SLA3500 Body Side Seal Screw(6req.)
2L	1418971	2L-SLA3500 Body Seal
8	1418972	8-SLA3500 Drive Gear
8A	1418973	8A-SLA3500 Drive Gear Shim Washer
13	1418974	13-SLA3500 Click Gear
15	1418975	15-SLA3500 Handle Assembly
15E	1418976	15E-SLA3500 Handle Knob
15K	1418968	15K-SLA3500 Handle Knob Cap Seal
15L	1417804	15L-CLA2000 Handle Knob Seal
15P	1422394	15P-SLA3500 Sub-Handle Assembly
15Q	1417805	15E-CLA3000 Handle Knob
19	1418977	19-SLA3500 Pinion Gear
19A	1277424	19A-SSV3500 Pinion Gear Washer