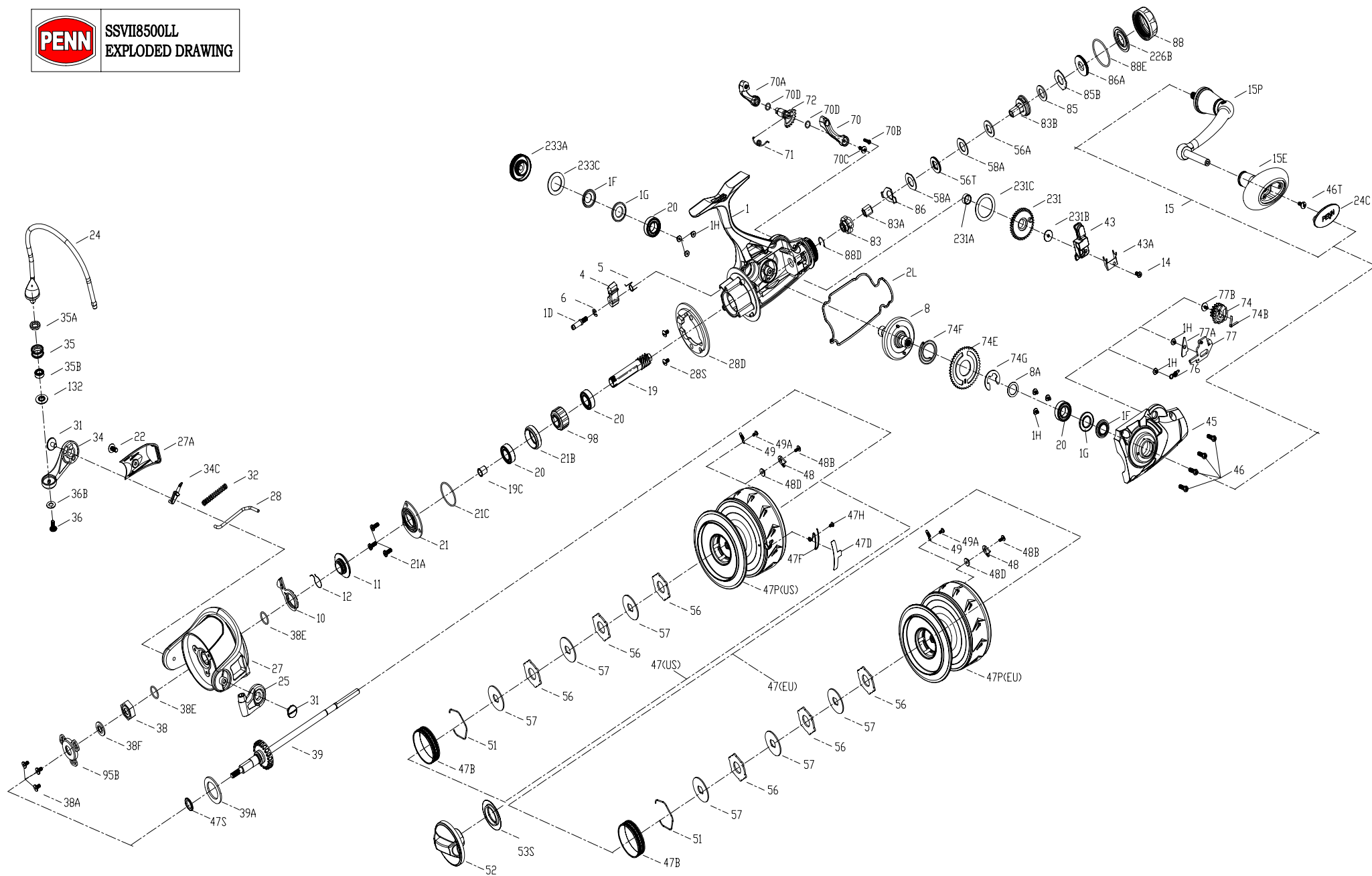


PENN SSVII8500LL
EXPLODED DRAWING





KEY NO.	PART NO.	PENN STYLE NO.	DESCRIPTION	KEY NO.	PART NO.	PENN STYLE NO.	DESCRIPTION
1	1611022	1-SSVII8500LL	Body Assembly	47B	1277076	47B-SSV5500	Spool Band
1D	1277140	1D-SSV7500	A/R Pawl Post	47D	1611026	47D-SSVII6500LL	Line Clip
1F	1419083	1F-SLA7500	Body Side Seal	47F	1611027	47F-SSVII6500LL	Line Clip Retainer
1G	1419082	1G-SLA7500	Body Side Seal Lock Plate	47H	1612635	47H-SSVII6500LL	Spool Click Spring Screw
1H	1418957	1H-SLA3500	Body Side Screw	47P	1611024	47P-SSVII8500LL-US	Spool
2L	1494792	2L-SSVI8500LL	Body Seal	47P	1612637	47P-SSVII8500LL-EU	Spool
4	1277142	4-SSV7500	A/R Pawl	47S	1494699	47S-SSVI2500LL	Seal
5	1277143	5-SSV7500	Pawl Spring	48	1385578	48-CLA3000	Spool Click Plate
6	1277144	6-SSV7500	Retainer Clip	48B	1385581	48B-CLA3000	Screw
8	1494793	8-SSVI8500LL	Drive Gear Assembly	48D	1385579	48D-CLA3000	Spool Clicker Spacer Ring
8A	1277037	8A-SSV5500	Drive Gear Shim Washer	49	1385580	49-CLA3000	Spool Click Spring
10	1277147	10-SSV7500	A/R Pawl Holder	49A	1341547	49A-SSV7500LC	Screw
11	1419088	11-SLA7500	A/R Bushing	51	1447925	51-CFTII5000	Drag Washer Retainer
12	1339487	12-CLA5000	A/R Bushing Spring	52	1494809	52-SSVI8500LL	Drag Knob Assembly
14	1276992	14-SSV6500LL	O/S Slider Retainer Screw	53S	1447927	53S-CFTII5000	Drag Knob Seal
15	1494794	15-SSVI8500LL	Handle Assembly	56	1339557	56-CLA5000	Drag Friction Washer
15E	1494795	15E-SSVI8500LL	Handle Knob	56A	1494767	56A-SSVI6500LL	Friction Washer
15P	1494796	15P-SSVI8500LL	Sub-Handle Assembly	56T	1494768	56T-SSVI6500LL	Drag Washer
19	1494797	19-SSVI8500LL	Pinion Gear	57	1339558	57-CLA5000	Keyed Drag Washer
19C	1419092	19C-SLA7500	Pinion Gear Bushing	58A	1494769	58A-SSVI6500LL	Eared Washer
20	1277152	20A-SSV7500	Ball Bearing	70	1494770	70-SSVI6500LL	Lever Left
21	1419093	21-SLA7500	Ball Bearing Retainer	70A	1494771	70A-SSVI6500LL	Lever Right
21A	1277154	21A-SSV7500	Screw	70B	1277128	70B-SSV6500LL	Screw
21B	1419094	21B-SLA7500	Pinion Bearing Collar	70C	1277003	70C-SSV4500LL	Screw
21C	1385684	21C-CLA8000	O Ring	70D	1494708	70D-SSVI2500LL	O-Ring
22	1277046	22-SSV5500	Rotor Cover Screw	71	1494772	71-SSVI6500LL	Spring
24	1494798	24-SSVI8500LL	Bail Assembly	72	1494773	72-SSVI6500LL	Switch Cam
24C	1494799	24C-SSVI8500LL	Handle Knob Cap	74	1494774	74-SSVI6500LL	Cam Gear
25	1385663	25-CLA8000	Bail Holder	74B	1494775	74B-SSVI6500LL	Spring
27	1494800	27-SSVI8500LL	Rotor	74E	1494810	74E-SSVI8500LL	Gear
27A	1494801	27A-SSVI8500LL	Rotor Cover	74F	1494811	74F-SSVI8500LL	Gear Spring
28	1494802	28-SSVI8500LL	Rotor Trip Lever	74G	1277014	74G-SSV4500LL	Live Liner Three Pawl Lever E-Clip
28D	1277161	28D-SSV7500	Rotor Brake	76	1494778	76-SSVI6500LL	Spring
28S	1277054	28S-SSV5500	Rotor Brake Screw	77	1494812	77-SSVI8500LL	Stop Claw
31	1277055	31-SSV5500	Screw	77A	1494813	77A-SSVI8500LL	Plate
32	1277162	32-SSV7500	Bail Spring	77B	1496533	22A-SLA7500	Screw
34	1385667	34-CLA8000	Bail Arm	83	1496528	83-SSVI8500LL	Ratchet
34C	1277164	34C-SSV7500	Pivot Arm	83A	1496529	83A-SSVI8500LL	Bushing
35	1457805	35-SLAIII8500HS	Line Roller	83B	1494782	83B-SSVI6500LL	Support Assembly
35A	1457806	35A-SLAIII8500HS	Line Roller Bushing	85	1494783	85-SSVI6500LL	Friction Washer
35B	1377606	35A-BTLII8000LC	Ball Bearing	85B	1494784	85B-SSVI6500LL	Eared Washer
36	1277166	36-SSV7500	Line Roller Screw	86	1494785	86-SSVI6500LL	Spring
36B	1417809	36B-CLA6000	Bail Arm Screw Washer	86A	1494786	86A-SSVI6500LL	Nut
38	1419103	38-SLA7500	Rotor Nut	88	1611030	88-SSVII6500LL	Knob
38A	1277044	21A-SSV5500	Screw	88D	1500157	88D-SSVI8500LL	Retainer
38E	1302502	232B-SSV3500	Pinion Gear Seal	88E	1494789	88E-SSVI6500LL	O-Ring
38F	1419080	38F-SLA7500	Rotor-Main Shaft Seal	95B	1419114	95B-SLA7500	Rotor Nut Locking Plate
39	1494803	39-SSVI8500LL	Main Shaft Assembly	98	1277190	98-SSV7500	One Way Clutch Bearing Assembly
39A	1494758	39A-SSVI6500LL	Washer	132	1457807	132-SLAIII8500HS	Line Roller Collar
43	1494804	43-SSVI8500LL	Slider	226B	1494790	226B-SSVI6500LL	Seal
43A	1494805	43A-SSVI8500LL	Slider Guide	231	1419117	231-SLA7500	O/S Gear
45	1494806	45-SSVI8500LL	Body Cover Assembly	231A	1494814	231A-SSVI8500LL	O/S Gear Bushing
46	1277074	46-SSV5500	Screw	231B	1277100	231B-SSV5500	O/S Gear Screw
46T	1494762	46T-SSVI6500LL	Screw	231C	1494815	231C-SSVI8500LL	O/S Gear Washer
47	1611023	47-SSVII8500LL-US	Spool Assembly	233A	1419118	233A-SLA7500	Handle Cap Assembly
47	1612636	47-SSVII8500LL-EU	Spool Assembly	233C	1419076	233C-SLA5500	Handle Cap Seal



Thank you for your recent PENN gear purchase. No matter where you fish or what you fish for, you can depend PENN to perform in any battle day in and day out. Now it's time to get your product registered and get out on the water.

<https://register.pennfishing.com>