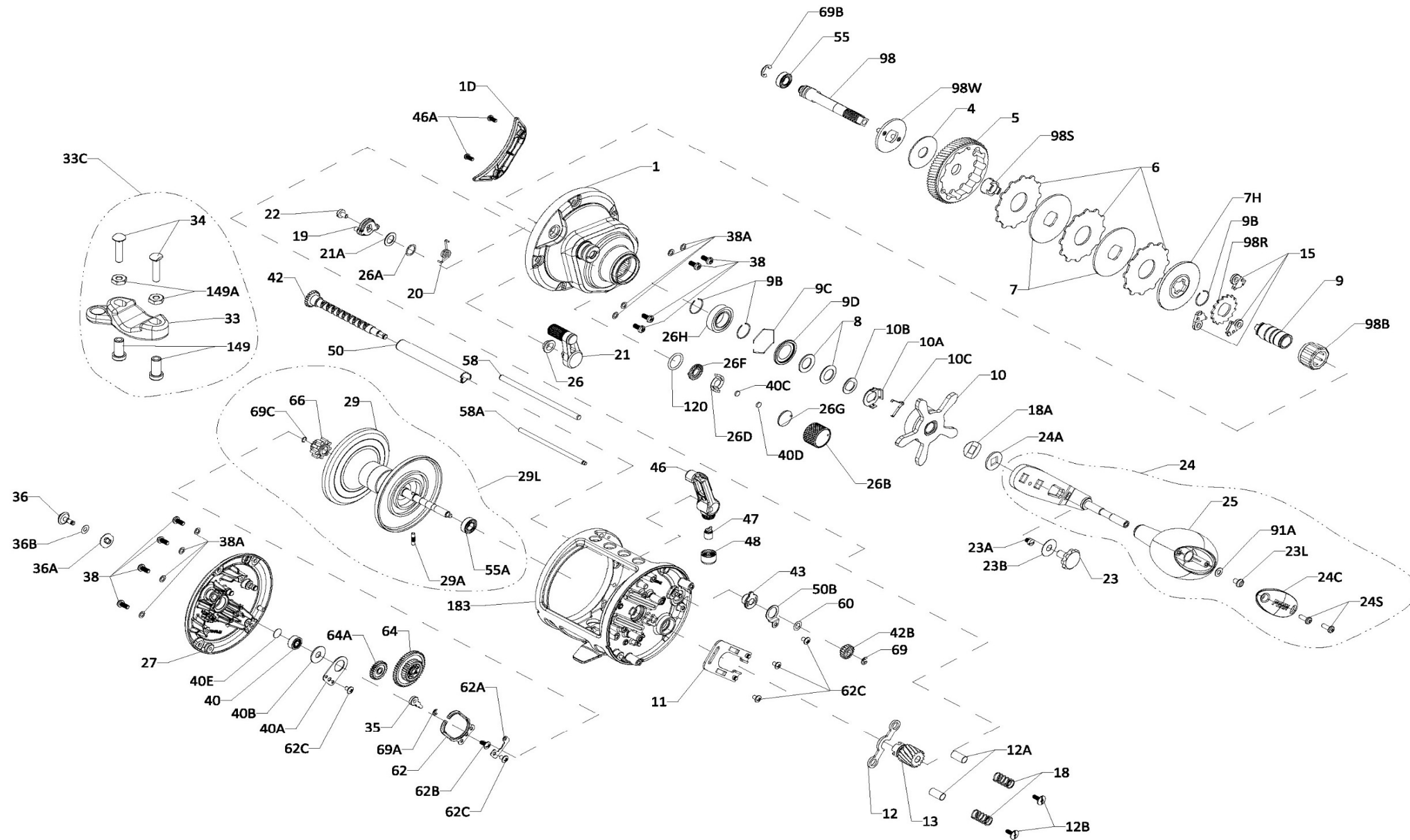




PARTS LIST FOR MODEL
FATHOM II 30LW
REEL PART NO. 1481311

Key No.	Penn Style No.	Part No.	Description	Key No.	Penn Style No.	Part No.	Description	Key No.	Penn Style No.	Part No.	Description
1	1-FTHII30LW	1488724	Right Side Plate Assembly	10	10-FTHII30LW	1488735	Star Drag	19	19-FTHII30LW	1488741	Eccentric
1D	1D-FTHII30LW	1488725	Gearbox Cover	10A	10A-20	1188711	Star Click Retainer	20	20-FTHII30LW	1488742	Eccentric Spring
4	4-FTHII30LW	1488726	Drag Washer	10B	10B-20	1188710	Star Click Washer	21	21-FTHII30LW	1488743	Eccentric Lever
5	5-FTHII30LW	1488727	Main Gear	10C	10C-525MAG2	1188712	Star Click Spring	21A	21A-FTHII30LW	1488744	Eccentric Washer
6	6-FTHII30LW	1488728	Tab Drag Washer (3 req)	11	11-FTHII30LW	1488736	Eccentric Jack Assembly	22	22-20	1188690	Eccentric Screw
7	7-FTHII30LW	1488729	Keyed Metal Drag Washer (2 req)	12	12-FTHII30LW	1488737	Pinion Yoke	23	23-FTH20LW	1208117	Handle Assembly Screw
7H	7H-FTHII30LW	1488730	Heavy Metal Drag Washer	12A	12A-FTHII30LW	1488738	Yoke Post Bushing (2 req)	23A	23A-20	1188717	Handle Lock Screw
8	8-20	1188709	Spring Washer (2 req)	12B	12B-FTHII30LW	1488739	Pinion Yoke Screw (2 req)	23B	23B-20	1207784	Handle Screw Washer
9	9-FTHII30LW	1488731	Spacer Sleeve	13	13-FTHII30LW	1488740	Pinion	23L	23L-750	1191283	Screw
9B	9B-FTHII30LW	1488732	Retainer Ring (3 req)	15	15-20	1188675	Anti Reverse Dog (3 req)	24	24-FTHII30LW	1488745	Handle Assembly
9C	9C-FTHII30LW	1488733	Retainer Ring	18	18-20	1188688	Pinion Yoke Spring (2 req)	24A	24A-20	1188715	Handle Thrust Washer
9D	9D-FTHII30LW	1488734	Bearing Cover	18A	18A-20	1188714	Keyed Spring Washer	24C	24C-SQL50LW	1286717	Handle Knob Cap



24	24-FTHII30LW	1488745	Handle Assembly	26	26-20	1188692	Bushing	26A	26A-FTHSD12	1242792	Washer (As Required)
24A	24A-20	1188715	Handle Thrust Washer	26B	26B-FTHII30LW	1488746	Spool Tension Knob	26D	26D-525MAG2	1125769	Spool Tension Click Spring
24C	24C-SQL50LW	1286717	Handle Knob Cap	26F	26F-525MAG2	1125768	Spool Tension Ratchet Inner	26G	26G-525MAG2	1125772	Spool Tension Ratchet Outer
24S	24S-TRQ40NLD2	1265021	Screw (Smoke) (2 req)	26H	26-TRQ40NLD2	1265023	Bearing	27	27-FTHII30LW	1488747	Left Side Plate Assembly
25	25-SQL50	1286716	Handle Knob	29	29-FTHII30LW	1488748	Spool Sub Assembly	29A	29A-20	1188680	Spool Shaft Pin
26	26-20	1188692	Bushing	29L	29L-FTHII30LW	1488749	Spool Assembly	33	33-113	1182754	Rod Clamp
26A	26A-FTHSD12	1242792	Washer (As Required)	33C	33C-TRQ40	1229936	Rod Clamp Kit	34	34-45	1182788	Screw (2 req)
26B	26B-FTHII30LW	1488746	Spool Tension Knob	34	34-45	1182788	Screw (2 req)	35	35-20	1188656	Click Tongue
26D	26D-525MAG2	1125769	Spool Tension Click Spring	36	36-FTHII30LW	1488750	Alarm Button	36A	36A-FTH20LW	1208113	Click Washer
26F	26F-525MAG2	1125768	Spool Tension Ratchet Inner	36B	36B-20	1188651	Click PVC Washer	38	38-FTH15LD2	1309885	Screw (8 req)
26G	26G-525MAG2	1125772	Spool Tension Ratchet Outer	38A	38A-20	1188649	Flat Washer (8 req)	40	40-FTHII30LW	1497821	Ball Bearing 4x10x4
26H	26-TRQ40NLD2	1265023	Bearing	40	40-FTHII30LW	1497821	Ball Bearing 4x10x4	40A	40A-20	1188663	Retainer
27	27-FTHII30LW	1488747	Left Side Plate Assembly	40B	40B-20	1188662	Felt Washer	40C	40C-525MAG2	1208115	Washer, Metal Thrust
29	29-FTHII30LW	1488748	Spool Sub Assembly	40D	40D-525MAG2	1125771	Washer, Rubber Thrust	40E	40E-20	1188660	Bronze Washer
29A	29A-20	1188680	Spool Shaft Pin	42	42-FTHII30LW	1488751	Worm Shaft Assembly	42B	42B-FTHII30LW	1488752	L. C. Idler Gear
29L	29L-FTHII30LW	1488749	Spool Assembly	43	43-FTHII30LW	1488753	Worm Shaft Bushing	46	46-FTHII30LW	1488754	Line Guide Assembly
33	33-113	1182754	Rod Clamp	46A	46A-FTHII30LW	1488755	Cover Plate Screw (2 req)	47	47-FTHII30LW	1488756	Line Guide Pawl
33C	33C-TRQ40	1229936	Rod Clamp Kit	46	46-FTHII30LW	1488754	Line Guide Assembly	48	48-FTHII30LW	1488757	Line Guide Nut
34	34-45	1182788	Screw (2 req)	46A	46A-FTHII30LW	1488755	Cover Plate Screw (2 req)	50	50-FTHII30LW	1488758	Worm Shield
35	35-20	1188656	Click Tongue	47	47-FTHII30LW	1488756	Line Guide Pawl	50B	50B-FTHII30LW	1488759	Level Wind Lock Plate
36	36-FTHII30LW	1488750	Alarm Button	48	48-FTHII30LW	1488757	Line Guide Nut	55	55-20	1188681	Ball Bearing 6x12x4
36A	36A-FTH20LW	1208113	Click Washer	48	48-FTHII30LW	1488757	Line Guide Nut	55A	55A-FTHII30LW	1497822	Ball Bearing 6x12x4
36B	36B-20	1188651	Click PVC Washer	50	50-FTHII30LW	1488758	Worm Shield	58	58-FTHII30LW	1488760	Line Guide Post
38	38-FTH15LD2	1309885	Screw (8 req)	50B	50B-FTHII30LW	1488759	Level Wind Lock Plate	58A	58A-FTHII30LW	1488761	Line Guide Guard Post
38A	38A-20	1188649	Flat Washer (8 req)	55	55-20	1188681	Ball Bearing 6x12x4	60	60-20	1188670	Worm Shaft Washer
40	40-FTHII30LW	1497821	Ball Bearing 4x10x4	55A	55A-FTHII30LW	1497822	Ball Bearing 6x12x4	62	62-20	1188664	Click Spring
40A	40A-20	1188663	Retainer	58	58-FTHII30LW	1488760	Line Guide Post	62A	62A-20	1188653	Click Spring Guard
40B	40B-20	1188662	Felt Washer	58A	58A-FTHII30LW	1488761	Line Guide Guard Post	62B	62B-20	1188665	Screw M2.6x7.5
40C	40C-525MAG2	1208115	Washer, Metal Thrust	60	60-20	1188670	Worm Shaft Washer	62C	62C-20	1188654	Screw (5 req)
40D	40D-525MAG2	1125771	Washer, Rubber Thrust	62	62-20	1188664	Click Spring	64	64-FTHII30LW	1488762	Idler Gear
40E	40E-20	1188660	Bronze Washer	62A	62A-20	1188653	Click Spring Guard	64A	64A-40	1208073	Idler Gear
42	42-FTHII30LW	1488751	Worm Shaft Assembly	62B	62B-20	1188665	Screw M2.6x7.5	66	66-20	1188678	Spool Gear, Click Ratchet
42B	42B-FTHII30LW	1488752	L. C. Idler Gear	62C	62C-20	1188654	Screw (5 req)	69	69-SQL20LC	1308797	Retainer 2.5*6
43	43-FTHII30LW	1488753	Worm Shaft Bushing	64	64-FTHII30LW	1488762	Idler Gear	69A	69-20	1188657	Retainer 3x7
46	46-FTHII30LW	1488754	Line Guide Assembly	64A	64A-40	1208073	Idler Gear	69B	69B-40	1208064	Retainer 5x10
46A	46A-FTHII30LW	1488755	Cover Plate Screw (2 req)	66	66-20	1188678	Spool Gear, Click Ratchet	69C	69C-20	1188677	Retainer "C" Ring
47	47-FTHII30LW	1488756	Line Guide Pawl	69	69-SQL20LC	1308797	Retainer 2.5*6	91A	91A-TRQ40NLD2	1277514	Handle Knob Washer
48	48-FTHII30LW	1488757	Line Guide Nut	69A	69-20	1188657	Retainer 3x7	98	98-FTHII30LW	1488763	Main Gear Shaft
50	50-FTHII30LW	1488758	Worm Shield	69B	69B-40	1208064	Retainer 5x10	98B	98B-FTHII30LW	1488764	IAR Bearing
50B	50B-FTHII30LW	1488759	Level Wind Lock Plate	69C	69C-20	1188677	Retainer "C" Ring	98R	98R-FTHII30LW	1488765	Ratchet
55	55-20	1188681	Ball Bearing 6x12x4	91A	91A-TRQ40NLD2	1277514	Handle Knob Washer	98S	98S-FTHII30LW	1488766	Gear Stud Bushing
55A	55A-FTHII30LW	1497822	Ball Bearing 6x12x4	98	98-FTHII30LW	1488763	Main Gear Shaft	98W	98W-FTHII30LW	1488767	Thrust Washer
58	58-FTHII30LW	1488760	Line Guide Post	98B	98B-FTHII30LW	1488764	IAR Bearing	120	120-113H	1184522	O-Ring
58A	58A-FTHII30LW	1488761	Line Guide Guard Post	98R	98R-FTHII30LW	1488765	Ratchet	149	149-45	1184702	Nut, Rod Clamp (2 req)
60	60-20	1188670	Worm Shaft Washer	98S	98S-FTHII30LW	1488766	Gear Stud Bushing	149A	149-200	1184706	Nut, Hex (2 req)
62	62-20	1188664	Click Spring	98W	98W-FTHII30LW	1488767	Thrust Washer	183	183-FTHII30LW	1488768	Frame Assembly
62A	62A-20	1188653	Click Spring Guard	120	120-113H	1184522	O-Ring				
62B	62B-20	1188665	Screw M2.6x7.5	149	149-45	1184702	Nut, Rod Clamp (2 req)				
62C	62C-20	1188654	Screw (5 req)	149A	149-200	1184706	Nut, Hex (2 req)				
64	64-FTHII30LW	1488762	Idler Gear	183	183-FTHII30LW	1488768	Frame Assembly				
64A	64A-40	1208073	Idler Gear								
66	66-20	1188678	Spool Gear, Click Ratchet								
69	69-SQL20LC	1308797	Retainer 2.5*6								
69A	69-20	1188657	Retainer 3x7								
69B	69B-40	1208064	Retainer 5x10								
69C	69C-20	1188677	Retainer "C" Ring								
91A	91A-TRQ40NLD2	1277514	Handle Knob Washer								
98	98-FTHII30LW	1488763	Main Gear Shaft								
98B	98B-FTHII30LW	1488764	IAR Bearing								
98R	98R-FTHII30LW	1488765	Ratchet								
98S	98S-FTHII30LW	1488766	Gear Stud Bushing								
98W	98W-FTHII30LW	1488767	Thrust Washer								
120	120-113H	1184522	O-Ring								
149	149-45	1184702	Nut, Rod Clamp (2 req)								
149A	149-200	1184706	Nut, Hex (2 req)								
183	183-FTHII30LW	1488768	Frame Assembly								