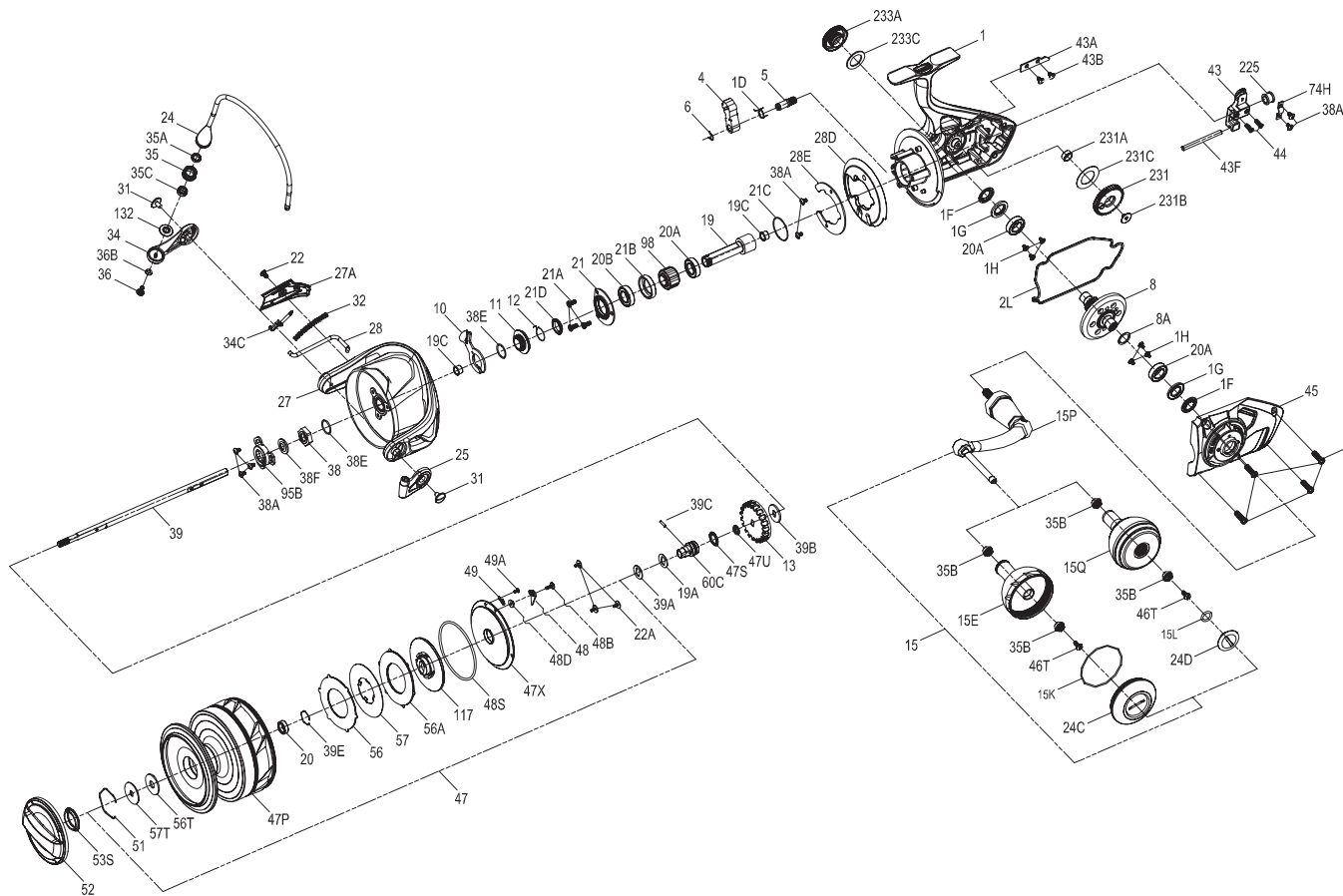




PARTS LIST FOR MODEL SLAMMERIV 10500



KEY NO.	PART NO.	STYLE NO.	DESCRIPTION
24	1559401	24-SLAIV10500	One Piece Bail
24C	1559269	24C-SLAIV5500	Handle Knob Cap
24D	1417808	24C-CLA5000	Handle Knob Cap
25	1385663	25-CLA8000	Bail Holder
27	1559402	27-SLAIV10500	Rotor
27A	1559403	27A-SLAIV10500	Rotor Cover
28	1559404	28-SLAIV10500	Bail Trip Lever
28D	1419140	28D-SLA9500	Rotor Brake
28E	1294662	28E-SSV10500	Rotor Brake Cover
31	1277055	31-SSV5500	Bail Arm Screw(2req.)
32	1419141	32-SLA9500	Bail Spring
34	1385667	34-CLA8000	Bail Arm
34C	1277164	34C-SSV7500	Pivot Arm
35	1457805	35-SSV7500	Line Roller
35A	1419050	35A-SLA5500	Line Roller Bushing
35B	1277060	35A-SSV5500	Line Roller Ball Bearing(4req.)
35C	1559273	35C-SLAIV5500	Ball Bearing
36	1422399	36-SLA9500	Line Roller Screw
36B	1417809	36B-CLA6000	Bail Arm Screw Washer
38	1419103	38-SLA7500	Rotor Nut
38A	1277063	38A-SSV5500	Rotor Nut Lock Plate Screw(7req.)
38E	1418958	38E-SLA3500	Pinion Gear Seal(2req.)
38F	1419143	38F-SLA9500	Main Shaft Seal
39	1559405	39-SLAIV10500	Main Shaft
39A	1559406	39A-SLAIV10500	Spool Adjust Washer
39B	1422994	39B-SLA9500	Main Shaft Washer
39C	1559407	39C-SLAIV10500	Main Shaft Dowel
39E	1559277	39E-SLAIV5500	Lock Spring
43	1419145	43-SLA9500	Oscillation Slider
43A	1277273	43A-SSV9500	Oscillation Slider Guide
43B	1277063	38A-SSV5500	Rotor Nut Lock Plate Screw(2req.)
43F	1419146	43F-SLA9500	Guide Shaft
44	1277174	44-SSV7500	Main Shaft Screw(2req.)
45	1559408	45-SLAIV10500	Body Cover Assembly
46	1277275	46-SSV9500	Body Cover Screw(4req.)
46T	1341500	3-SSV7500LC	A/R Screw(2req.)
47	1559409	47-SLAIV10500	Spool Assembly
47P	1559410	47P-SLAIV10500	Spool
47S	1559411	47S-SLAIV10500	Seal
47U	1559412	47U-SLAIV10500	Seal
47X	1559413	47X-SLAIV10500	Drag Cover
48	1419155	48-SLA9500	Spool Clicker
48B	1419156	48B-SLA9500	Spool Clicker Spring Screw
48D	1422400	48D-SLA9500	Spool Clicker Spacer Ring
48S	1559414	48S-SLAIV10500	Seal
49	1419157	49-SLA9500	Spool Click Spring
49A	1419158	49A-SLA9500	Spool Click Spring Screw
51	1277085	51-SSV5500	Drag Washer Retainer
52	1559415	52-SLAIV10500	Drag Knob Assembly
53S	1293252	53S-SSV5500	Drag Knob Seal
56	1415388	6-T2S7-1	Drag Friction Washer
56A	1415389	6-T2S7-2	Drag Friction Washer
56T	1277089	56T-SSV5500	Drag Friction Washer
57	1559416	57-SLAIV10500	Keyed Drag Washer
57T	1419058	57T-SLA5500	Keyed Drag Washer
60C	1559417	60C-SLAIV10500	Spool Support Sleeve
74H	1422401	74H-SLA9500	Rear Bushing Plate
95B	1419114	95B-SLA7500	Rotor Nut Locking Plate
98	1277190	98-SSV7500	Clutch/Sleeve Assembly
117	1559418	117-SLAIV10500	Drag Drive Plate
132	1419163	132-SLA9500	Line Roller Collar
225	1419164	225-SLA9500	Rear Bushing
231	1419166	231-SLA9500	Oscillation Gear
231A	1419167	231A-SLA9500	Oscillation Gear Bushing
231B	1419168	231B-SLA9500	Oscillation Gear Screw
231C	1422489	231C-SLA9500	O/S Gear Washer
233A	1559419	233A-SLAIV10500	Handle Cap
233C	1419170	233C-SLA9500	Handle Cap Washer

KEY NO.	PART NO.	STYLE NO.	DESCRIPTION
1	1559397	1-SLAIV10500	Body Assembly
1D	1277252	1D-SSV9500	A/R Pawl Post
1F	1419083	1F-SLA7500	Body Side Seal(2req.)
1G	1419082	1G-SLA7500	Body Side Seal Lock Plate(2req.)
1H	1418957	1H-SLA3500	Body Side Screw(6req.)
2L	1419124	2L-SLA9500	Body Seal
4	1277294	4-SSV10500	A/R Pawl
5	1277255	5-SSV9500	A/R Pawl Spring
6	1277256	6-SSV9500	Retainer Clip
8	1419125	8-SLA9500	Driver Gear
8A	1277146	8A-SSV7500	Driver Gear Shim Washer
10	1419126	10-SLA9500	A/R Pawl Holder
11	1559343	11-SLAIV7500	A/R Bushing
12	1309001	12-SSV9500	A/R Bushing Spring
13	1419127	13-SLA9500	Spool Click Gear
15	1559398	15-SLAIV10500	Handle Assembly
15E	1559264	15E-SLAIV5500	Handle Knob

KEY NO.	PART NO.	STYLE NO.	DESCRIPTION
15K	1419073	15K-SLA5500	Handle Knob Cap Seal
15L	1417804	15L-CLA2000	Handle Knob Cap Seal
15P	1422397	15P-SLA9500	Sub-Handle Assembly
15Q	1418244	15E-CLA6000	Handle Knob
19	1419129	19-SLA9500	Pinion Gear
19A	1559399	19A-SLAIV10500	Washer
19C	1419130	19C-SLA9500	Pinion Gear Bushing(2req.)
20	1385530	20A-CLA3000	Sealed Ball Bearing
20A	1277152	20A-SSV7500	Ball Bearing(3req.)
20B	1422398	20B-SLA9500	Sealed Ball Bearing
21	1559400	21-SLAIV10500	Ball Bearing Retainer
21A	1277154	21A-SLA9500	Pinion Retainer Screw(3req.)
21B	1419132	21B-SLA9500	Pinion Ball Bearing Collar
21C	1385684	21C-CLA8000	O Ring
21D	1559346	21D-SLAIV7500	Body Head Seal
22	1277046	22-SSV5500	Rotor Cover Screw
22A	1418982	22A-SLA3500	Drag Cover Screw(3req.)