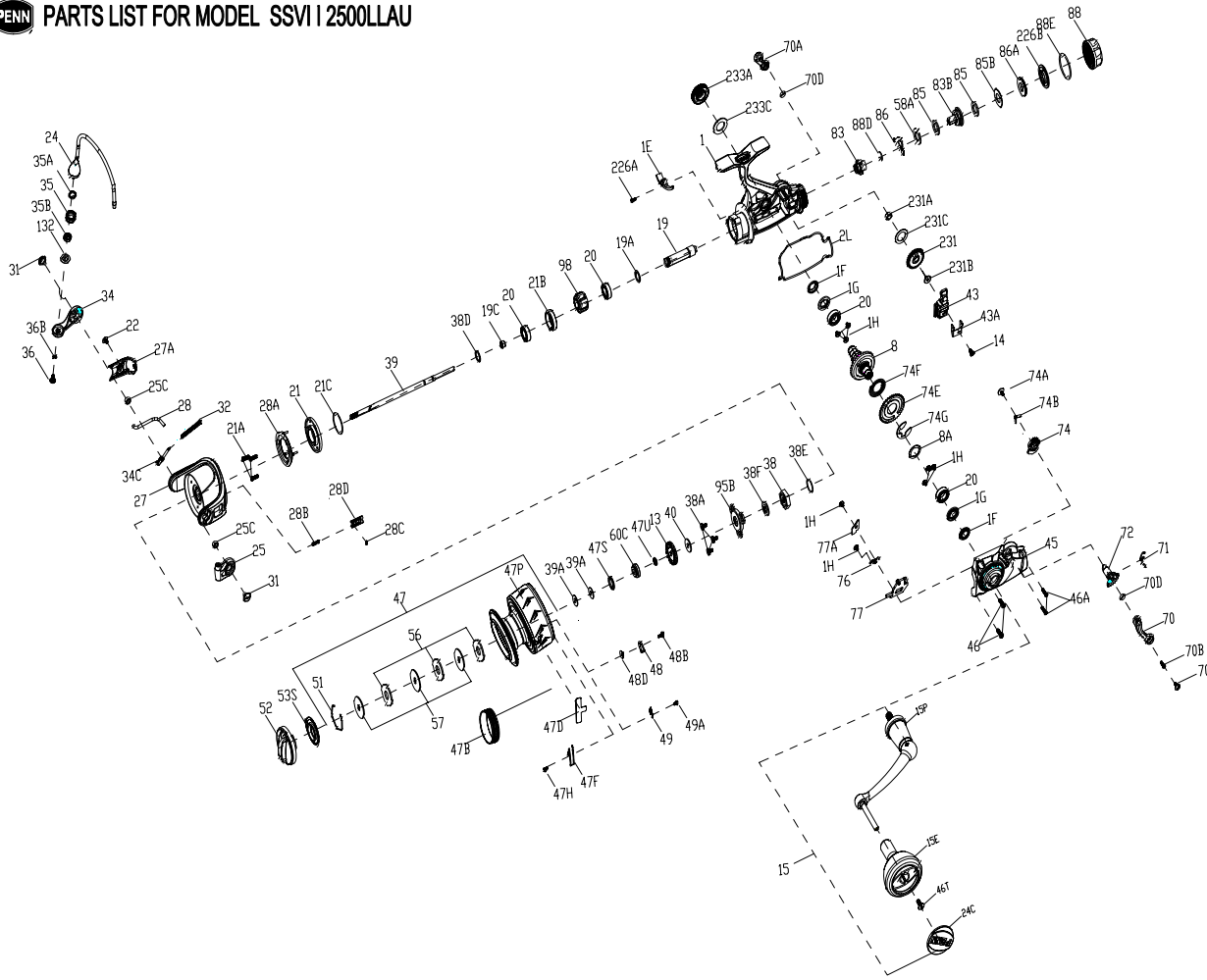


PENN PARTS LIST FOR MODEL SSVI | 2500LLAU



KEY NO.	PART NO.	PENN STYLE NO.	DESCRIPTION
35A	1494692	35A-SSVI2500LL	Line Roller Bushing
35B	1385552	35A-CLA3000	Line Roller Sealed Ball Bearing
36	1389419	36-CLA2000	Line Roller Screw
36B	1417809	36B-SLA3500	Bail Arm Screw Washer
38	1418993	38-SLA3500	Rotor Nut
38A	1385554	38A-CLA2000	Rotor Nut Lock Plate Screw
38D	1257343	38D-SLA3500	Washer
38E	1418958	38E-SLA3500	Pinion Gear Seal
38F	1418959	38F-SLA3500	Rotor-Main Shaft Seal
39	1494693	39-SSVI2500LL	Main Shaft
39A	1494694	39A-SSVI2500LL	Washer
40	1422917	40-SLA3500	Washer
43	1494695	43-SSVI2500LL	Oscillation Slider
43A	1276996	43A-SSV4500LL	Oscillation Slider Guide
45	1494696	45-SSVI2500LL	Body Cover Assembly
46	1276949	46-SSV3500	Body Cover Screw
46A	1277128	70B-SSV6500LL	Drag Switch Lever Screw
46T	1277046	22-SSV5500	Rotor Cover Screw
47	1611002	47-SSVI12500LL	Spool Assembly
47B	1277076	47B-SSV4500	Spool Band
47D	1611026	47D-SSVI16500LL	Line Clip
47F	1612321	47F-SSVI2500LL	Line Clip Retainer
47P	1611003	47P-SSVI2500LL	Spool
47H	1612635	47H-SSVI16500LL	Spool Click Spring Screw
47S	1494699	47S-SSVI2500LL	Seal
47U	1494700	47U-SSVI2500LL	Seal
48	1385578	48-CLA3000	Spool Click Plate
48B	1385581	48B-CLA3000	Spool Clicker Spring Screw
48D	1385579	48D-CLA3000	Spool Clicker Spacer Ring
49	1259579	49-CLA3000	Spring
49A	1294638	49A-CLA2000	Screw
51	1277085	51-SSV4500LL	Drag Washer Retainer
52	1494701	52-SSVI2500LL	Drag Knob Assembly
53S	1447888	53S-CFT113000	Drag Knob Seal
56	1494702	56-SSVI2500LL	Friction Washer
57	1494703	57-SSVI2500LL	Keyed Washer
58A	1494704	58A-SSVI2500LL	Eared Washer
60C	1494705	60C-SSVI2500LL	Spool Support Sleeve
70	1494706	70-SSVI2500LL	Lever Left
70A	1494707	70A-SSVI2500LL	Lever Right
70B	1277002	70B-SSV4500LL	Drag Switch Lever Screw
70C	1117351	70C-BTLI18000CLL	R-Drng Switch Lever Screw
70D	1494708	70D-SSVI2500LL	O-Ring
71	1494709	71-SSVI2500LL	Spring
72	1494710	72-SSVI2500LL	Switch Cam
74	1494711	74-SSVI2500LL	Cam Gear
74B	1494712	74B-SSVI2500LL	Spring
74E	1494713	74E-SSVI2500LL	Gear
74F	1494714	74F-SSVI2500LL	Spring
74G	1277014	74G-SSV4500LL	Three Pawl Lever E-clip
76	1277134	76-SSV4500LL	Live Liver Claw Spring
77	1494715	77-SSVI2500LL	Stop Claw
77A	1494716	77A-SSVI2500LL	Plate
77B	1418982	22A-SLA3500	Drag Cover Screw
83	1494717	83-SSVI2500LL	Ratchet
83B	1494718	83B-SSVI2500LL	Support Assembly
85	1494719	85-SSVI2500LL	Washer
85B	1494720	85B-SSVI2500LL	Eared Washer
86	1494721	86-SSVI2500LL	Spring
86A	1494722	86A-SSVI2500LL	Nut
88	1611004	88-SSVI2500LL	Knob
88D	1494725	88D-SSVI2500LL	Retainer
88E	1494724	88E-SSVI2500LL	O-Ring
95B	1419009	95B-SLA3500	Rotor Nut Locking Plate
98	1257345	98-CLA2000	One Way Clutch Bearing Assembly
132	1494726	132-SSVI2500LL	Line Roller Collar
226A	1385651	226A-SLA3500	Rear Cover Screw
226B	1494727	226B-SSVI2500LL	Knob Seal
231	1494728	231-SSVI2500LL	Oscillation Gear
231A	1385595	231A-CLA2000	Oscillation Gear Bushing
231B	1307857	231B-SSV3500	Oscillation Gear Screw
231C	1385594	231C-CLA2000	Oscillation Gear Washer
233A	1419015	233A-SLA3500	Handle Cap Assembly
233C	1419016	233C-SLA3500	Handle Cap Seal
21B	1385608	21B-CLA2000	Ball Bearing Bushing
21C	1494683	21C-SSVI2500LL	O-Ring
22	1092845	22-CLA2000	Rotor Cover Screw
24	1494684	24-SSVI2500LL	Bail Assembly
24C	1611007	24C-SSVI2500LL	Handle Knob Cap
25	1494686	25-SSVI2500LL	Bail Holder
25C	1188261	25C-CLA2000	Bail Holder Bushing
27	1494687	27-SSVI2500LL	Rotor
27A	1494688	27A-SSVI2500LL	Rotor Cover
28	1494689	28-SSVI2500LL	Rotor Trip Lever
28A	1494690	28A-SSVI2500LL	Rotor Brake
28B	1346982	28B-CLA2000	Compressing Spring
28C	1206550	28C-CLA2000	O Ring
28D	1385618	28D-CLA2000	Damper Holder
31	1385619	31-CLA2000	Bail Arm Screw
32	1385549	32-CLA3000	Bail Spring
34	1385620	34-CLA2000	Bail Arm
34C	1385551	34C-CLA3000	Pivot Arm
35	1494691	35-SSVI2500LL	Line Roller

407-SSVI2500LLAU
Rev.00 05-13-2023
1595168

KEY NO.	PART NO.	PENN STYLE NO.	DESCRIPTION
1	1611001	1-SSVI2500LL	Body Assembly
1E	1494675	1E-SSVI2500LL	Body Slope
1F	1418955	1F-SLA3500	Body Ball Bearing Seal
1G	1418956	1G-SLA3500	Body Side Seal Lock Plate(2req.)
1H	1418957	1H-SLA3500	Body Side Screw
2L	1494676	2L-SSVI2500LL	Body Seal
8	1611008	8-SSVI2500LL	Drive Gear
8A	1418973	8A-SLA3500	Drive Gear Shim Washer
13	1418974	13-SLA3500	Click Gear
14	1276992	14-SSV6500LL	Oscillation Slider Retainer Screw
15	1611005	15-SSVI2500LL	Handle Assembly
15E	1611006	15E-SSVI2500LL	Handle Knob
15P	1494680	15P-SSVI2500LL	Sub-Handle Assembly
19	1494681	19-SSVI2500LL	Pinion Gear
19A	1277424	19A-SSV3500	Pinion Gear Washer
19C	1418978	19C-SLA3500	Pinion Gear Bushing
20	1385530	20-CLA3000	Ball Bearing
21	1494682	21-SSVI2500LL	Ball Bearing Retainer
21A	1418980	21A-SLA3500	Retainer Screw