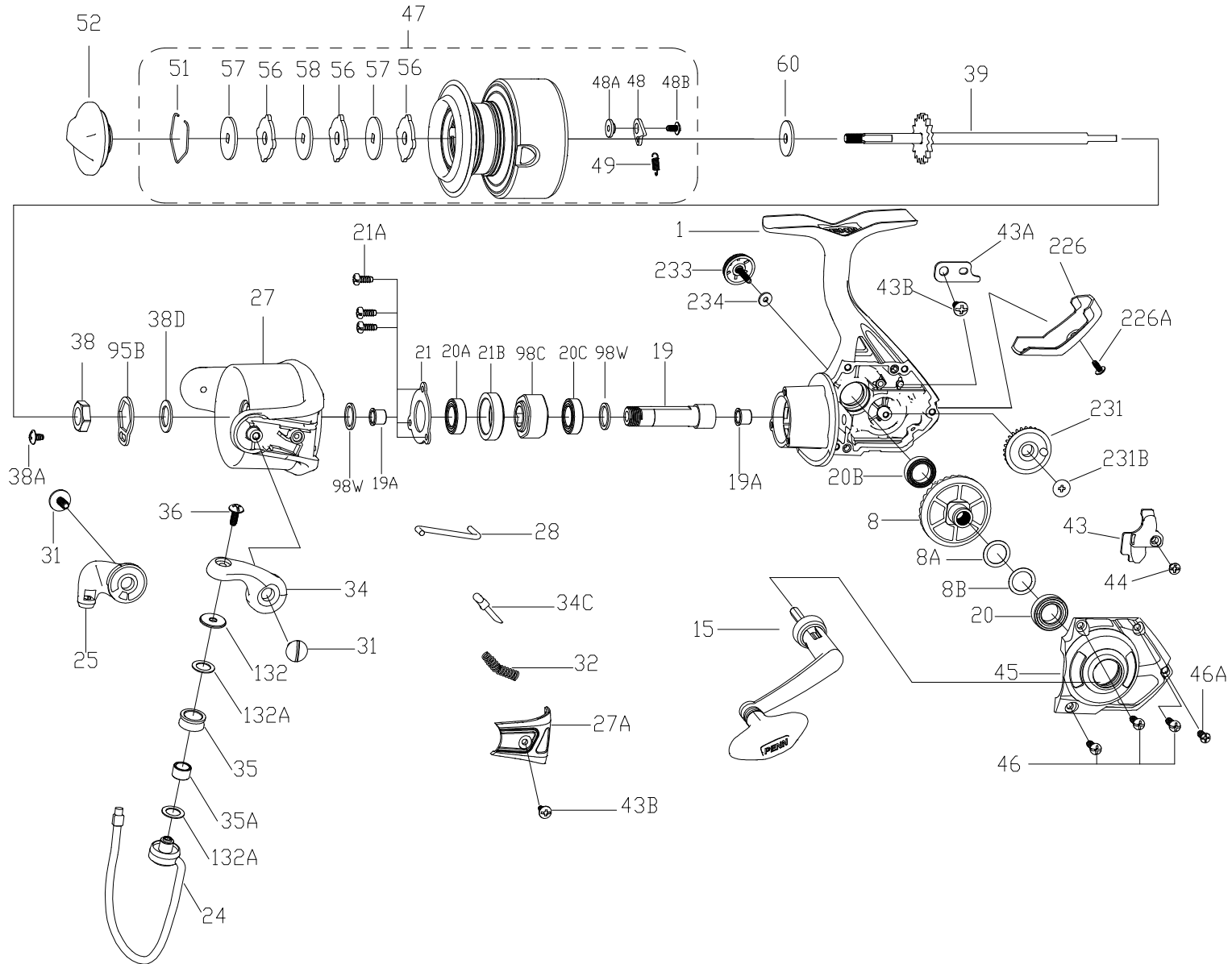




WRTHII4000
EXPLODED DRAWING





Thank you for your recent PENN gear purchase. No matter where you fish or what you fish for, you can depend PENN to perform in any battle day in and day out. Now it's time to get your product registered and get out on the water.

<https://register.pennfishing.com>

KEY NO.	PART NO.	PENN STYLE NO.	DESCRIPTION	KEY NO.	PART NO.	PENN STYLE NO.	DESCRIPTION
1	1609396	1-WRTHII4000	Housing	43	1485219	43-PURIII3000	Crosswind Block
8	1514939	8-WRTH2500	Main Gear	43A	1191818	43A-3000SG	Crosswind Block Plate
8A	1191028	8A-3000SG	Shim	43B	1203997	43B-3000PUR	Screw(2 req)
8B	1485199	8B-PURIII3000	Shim B	44	1191843	44-3000SG	Crosswind Block Screw
15	1514940	15-WRTH2500	Handle Assembly	45	1609392	45-WRTHII3000	Housing Cover
19	1485212	19-PURIII3000	Pinion Gear	46	1485201	46-PURIII3000	Housing Cover Screw (3 req)
19A	1191252	19A-3000SG	Bushing (2 req)	46A	1485202	46A-PURIII3000	Housing Cover Screw
20	1514942	20-WRTH2500	Housing Bushing	47	1609399	47-WRTHII4000	Spool Assembly
20A	1203973	20A-3000PUR	Ball Bearing	48	1211604	48-3000SG	Click Tongue
20B	1514941	20B-WRTH2500	Housing Bushing	48A	1214226	48A-3000SG	Click Tongue Washer
20C	1203975	20C-3000PUR	Ball Bearing	48B	1214189	48B-3000SG	Spool Click Screw
21	1308052	21-CFT3000	Bearing Retainer	49	1211605	49-3000SG	Click Tongue Spring
21A	1485211	21A-PURIII3000	Bearing Retainer Screw (3 req)	51	1308078	51-CFT3000	Drag Retaining Ring
21B	1192648	21B-3000SG	Collar	52	1609394	52-WRTHII3000	Drag Knob Assembly
24	1514962	24-WRTH4000	Bail Wire	56	1192035	56-3000SG	Drag Washer (3 req)
25	1514953	25-WRTH3000	Bail Holder	57	1514959	57-WRTH3000	Keyed Washer (2 req)
27	1609397	27-WRTHII4000	Rotor	58	1192052	58-3000SG	Eared Washer
27A	1609398	27A-WRTHII4000	Bail Pivot Cover	60	1514960	60-WRTH3000	Thrust Washer
28	1308062	28-CFT4000	Trip Lever	95B	1308081	95B-CFT3000	Rotor Locking Plate
31	1308063	31-CFT3000	Bail Arm Screw(2 req)	98C	1192212	98C-3000SG	Clutch/Sleeve Assembly
32	1191586	32-3000SG	Bail Spring	98W	1204004	98W-3000PUR	Washer (2 req)
34	1609391	34-WRTHII3000	Bail Arm	132	1192296	132-3000SG	Roller Washer
34C	1308065	34C-CFT3000	Pivot Arm	132A	1192302	132A-3000SG	Line Roller Washer (2 req)
35	1308066	35-CFT3000	Line Roller	226	1609395	226-WRTHII3000	Rear Cover
35A	1308067	35A-CFT3000	Line Roller Bushing	226A	1485216	226A-PURIII3000	Rear Cover Screw
36	1191699	36-3000SG	Bail Stud Screw	231	1485227	231-PURIII4000	Crosswind Gear
38	1203994	38-3000PUR	Rotor Nut	231B	1485218	231B-PURIII3000	Screw Crosswind Gear
38A	1308069	38A-CFT3000	Rotor Locking Plate Screw	233	1514949	233-WRTH2500	Lock Knob
38D	1308070	38D-CFT3000	Rotor Nut Washer	234	1514950	234-WRTH2500	Lock Knob Washer
39	1514964	39-WRTH4000	Main Shaft Assembly				

WARNING: Cancer and Reproductive Harm – www.P65Warnings.ca.gov