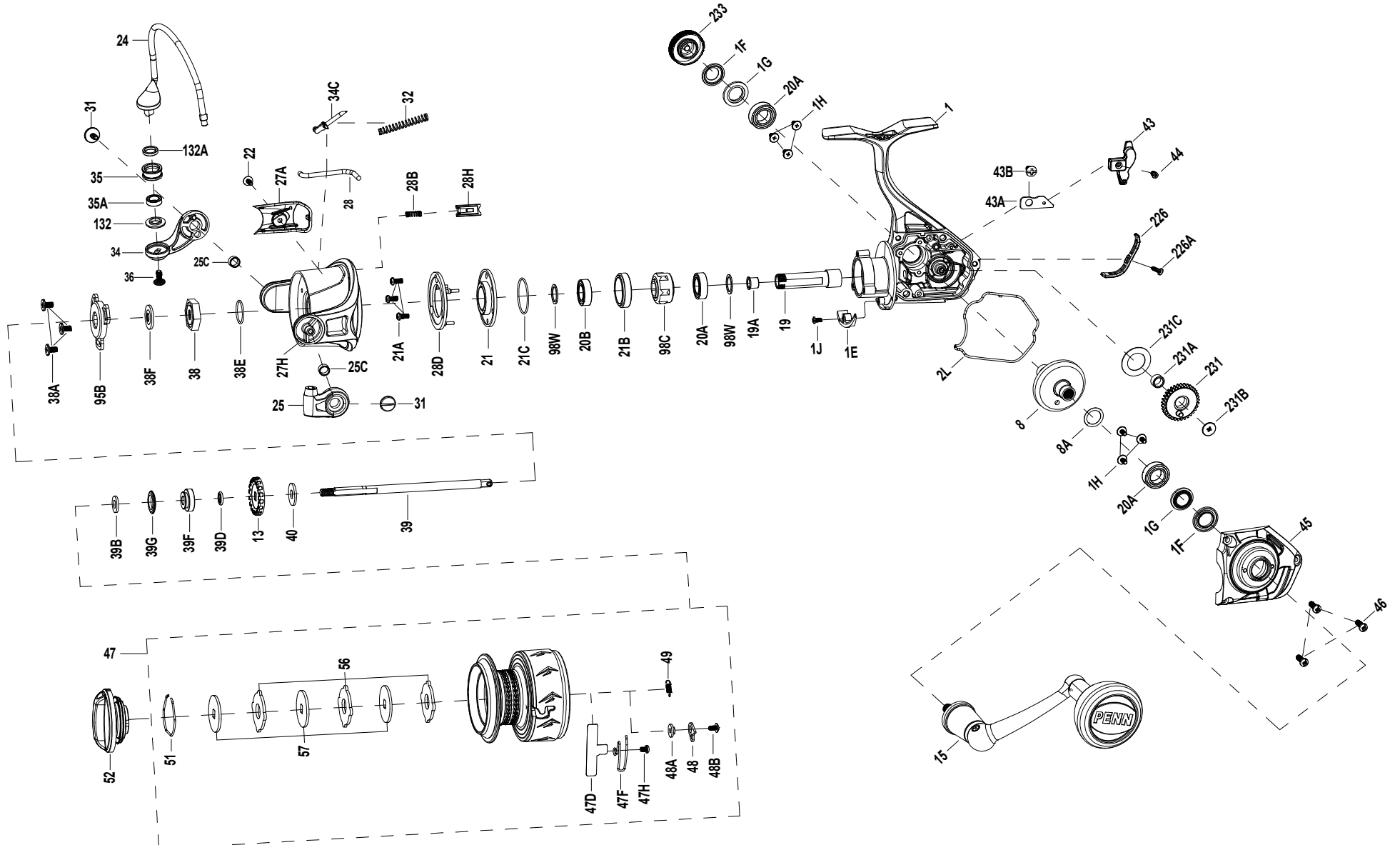




SSVII4500AU
EXPLODED DRAWING





Thank you for your recent PENN gear purchase. No matter where you fish or what you fish for, you can depend PENN to perform in any battle day in and day out. Now it's time to get your product registered and get out on the water.

<https://register.pennfishing.com>

KEY NO.	PART NO.	PENN STYLE NO.	DESCRIPTION	KEY NO.	PART NO.	PENN STYLE NO.	DESCRIPTION	KEY NO.	PART NO.	PENN STYLE NO.	DESCRIPTION
1	1612346	1-SSVII4500	Housing Assembly	28B	1489193	28B-SSVI3500	Rotor Brake Spring	46	1192645	21A-5000SG	Screw (3 req)
1E	1489173	1E-SSVI3500	Housing Slope	28D	1489195	28D-SSVI3500	Rotor Brake	47	1612347	47-SSVII4500	Spool Assembly
1F	1489174	1F-SSVI3500	Seal Ring (2 req)	28H	1489194	28H-SSVI3500	Rotor Brake	47D	1612339	47D-SSVII2500	Line Clip
1G	1489175	1G-SSVI3500	Seal Plate (2 req)	31	1489196	31-SSVI3500	Bail Arm Screw (2 req)	47F	1612348	47F-SSVII4500	Line Clip Spring
1H	1489176	1H-SSVI3500	Bearing Screw(6 req)	32	1191583	32-2000SG	Bail Spring	47H	1529492	47H-BTLIII5000	Line Clip Spring Screw
1J	1489177	1J-SSVI3500	Housing Slope Screw	34	1489197	34-SSVI3500	Bail Arm	48	1211604	48-3000SG	Click Tongue
2L	1489178	2L-SSVI3500	Housing Seal Ring	34C	1489198	34C-SSVI3500	Pivot Arm	48A	1214226	48A-3000SG	Click Tongue Washer
8	1612316	8-SSVII2500	Main Gear	35	1489199	35-SSVI3500	Line Roller	48B	1489220	48B-SSVI3500	Spool Click Screw
8A	1191028	8A-3000SG	Shim	35A	1489200	35A-SSVI3500	Roller Bearing	49	1211605	49-3000SG	Click Tongue Spring
13	1489180	13-SSVI3500	Click Ratchet	36	1191699	36-3000SG	Bail Stud Screw	51	1308078	51-CFT3000	Drag Retaining Ring
15	1614367	15-SSVII3500AU	Handle Assembly	38	1489201	38-SSVI3500	Rotor Nut	52	1489221	52-SSVI3500	Drag Knob Assembly
19	1612343	19-SSVII3500	Pinion Gear	38A	1308069	38A-CFT3000	Screw (3 req)	56	1308080	56-CFT3000	Drag Washer (3 req)
19A	1191252	19A-3000SG	Pinion Bushing	38E	1489203	38E-SSVI3500	Rotor O Ring	57	1489222	57-SSVI3500	Keyed Washer (3 req)
20A	1308050	20-CFT3000	Ball Bearing (3 req)	38F	1489204	38F-SSVI3500	Main Shaft Seal Ring	95B	1489223	95B-SSVI3500	Rotor Nut Cover
20B	1308051	20A-CFT3000	Ball Bearing	39	1489238	39-SSVI4500	Main Shaft	98C	1308082	98C-CFT3000	Clutch/Sleeve Assembly
21	1489183	21-SSVI3500	Bearing Retainer	39B	1489206	39B-SSVI3500	Thrust Washer	98W	1204004	98W-3000PUR	Clutch Washer (2 req)
21A	1489184	21A-SSVI3500	Screw (3 req)	39D	1489207	39D-SSVI3500	Spool Bushing Seal Ring	132	1489224	132-SSVI3500	Roller Washer
21B	1489185	21B-SSVI3500	Collar	39F	1489208	39F-SSVI3500	Spool Bushing	132A	1489225	132A-SSVI3500	Line Roller Bushing
21C	1489186	21C-SSVI3500	Bearing Retainer O Ring	39G	1489209	39G-SSVI3500	Spool Seal Ring	226	1489226	226-SSVI3500	Rear Cover
22	1203997	43B-3000PUR	Bail Pivot Cover Screw	40	1489210	40-SSVI3500	Main Shaft Washer	226A	1489227	226A-SSVI3500	Rear Cover Screw
24	1489234	24-SSVI4500	Bail Wire	43	1489211	43-SSVI3500	Crosswind Block	231	1489241	231-SSVI4500	Crosswind Gear
25	1489188	25-SSVI3500	Bail Holder	43A	1489212	43A-SSVI3500	Crosswind Block Plate	231A	1489229	231A-SSVI3500	Crosswind Gear Bushing
25C	1489189	25C-SSVI3500	Bushing (2 req)	43B	1489213	43B-SSVI3500	Plate Screw	231B	1489230	231B-SSVI3500	Crosswind Gear Screw
27A	1489235	27A-SSVI4500	Bail Pivot Cover	44	1489214	44-SSVI3500	Crosswind Block Screw	231C	1489231	231C-SSVI3500	Crosswind Gear Washer
27H	1489236	27H-SSVI4500	Rotor Assembly	45	1489239	45-SSVI4500	Housing Cover Assembly	233	1489286	233-SSVI2500	Bearing Cover Assembly
28	1489237	28-SSVI4500	Trip Lever								