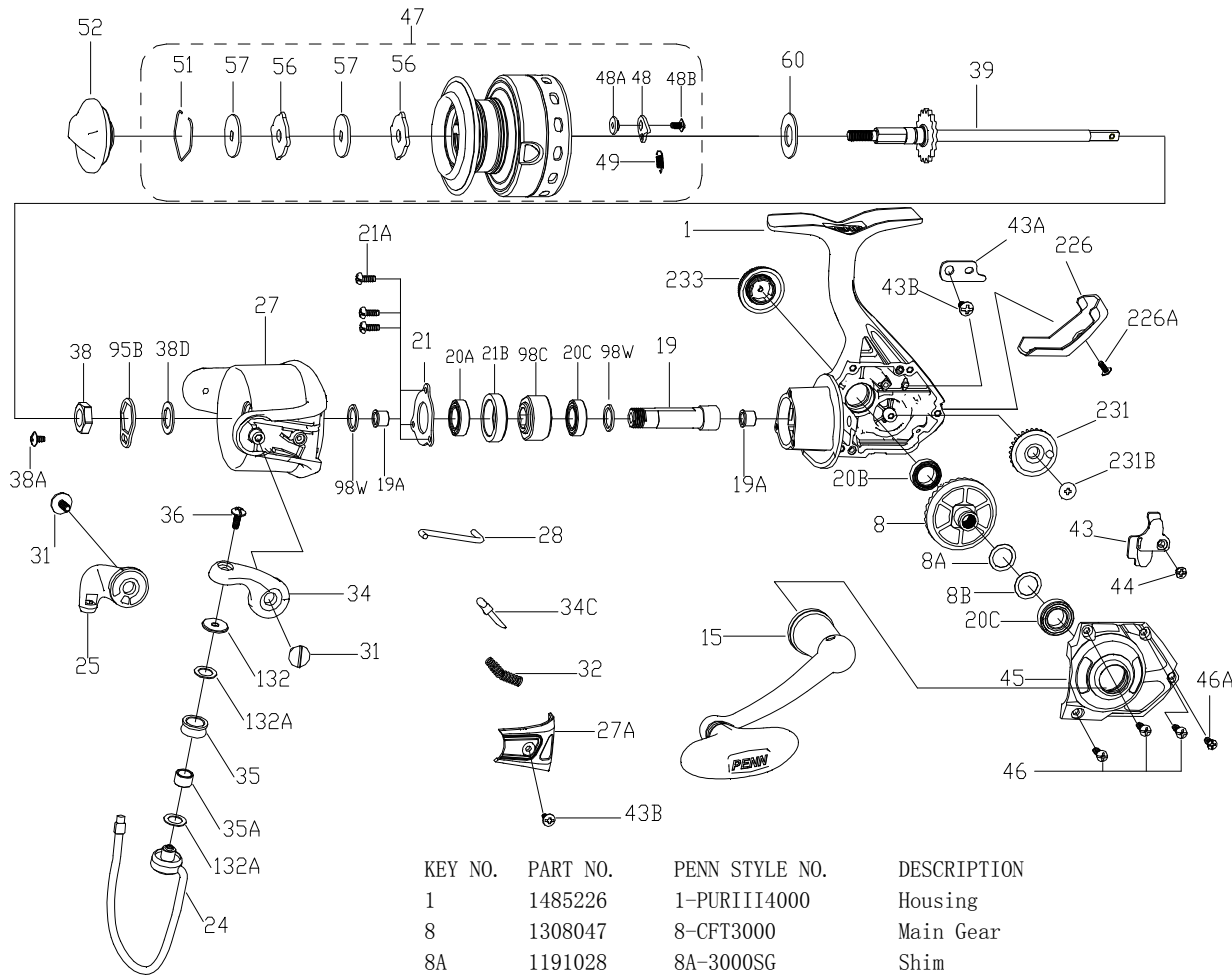




PARTS LIST FOR MODEL AS PURIII4000



KEY NO.	PART NO.	PENN STYLE NO.	DESCRIPTION
24	1308055	24-CFT4000	Bail Wire
25	1308056	25-CFT3000	Bail Holder
27	1485225	27-PURIII4000	Rotor
27A	1308060	27A-CFT4000	Bail Pivot Cover
28	1308062	28-CFT4000	Trip Lever
31	1308063	31-CFT3000	Bail Arm Screw(2 req)
32	1191586	32-3000SG	Bail Spring
34	1308064	34-CFT3000	Bail Arm
34C	1308065	34C-CFT3000	Pivot Arm
35	1308066	35-CFT3000	Line Roller
35A	1308067	35A-CFT3000	Line Roller Bushing
36	1191699	36-3000SG	Bail Stud Screw
38	1203994	38-3000PUR	Rotor Nut
38A	1308069	38A-CFT3000	Rotor Locking Plate Screw
38D	1308070	38D-CFT3000	Rotor Nut Washer
39	1365731	39-FRCII4000	Main Shaft Assembly
43	1485219	43-PURIII3000	Crosswind Block
43A	1191818	43A-3000SG	Crosswind Block Plate
43B	1203997	43B-3000PUR	Bail Pivot Cover Screw(2 req)
44	1191843	44-3000SG	Crosswind Block Screw
45	1485213	45-PURIII3000	Housing Cover
46	1485201	46-PURIII3000	Housing Cover Screw (3 req)
46A	1485202	46A-PURIII3000	Housing Cover Screw
47	1485224	47-PURIII4000	Spool Assembly
48	1211604	48-3000SG	Click Tongue
48A	1214226	48A-3000SG	Click Tongue Washer
48B	1214189	48B-3000SG	Spool Click Screw
49	1211605	49-3000SG	Click Tongue Spring
51	1308078	51-CFT3000	Drag Retaining Ring
52	1485221	52-PURIII3000	Drag Knob Assembly
56	1485222	56-PURIII3000	Drag Washer (2 req)
57	1192043	57-3000SG	Keyed Washer (2 req)
60	1192060	60-3000SG	Thrust Washer
95B	1308081	95B-CFT3000	Rotor Locking Plate
98C	1192212	98C-3000SG	Clutch/Sleeve Assembly
98W	1204004	98W-3000PUR	Washer(2 req)
132	1192296	132-3000SG	Roller Washer
132A	1192302	132A-3000SG	Line Roller Washer (2 req)
226	1485215	226-PURIII3000	Rear Cover
226A	1485216	226A-PURIII3000	Rear Cover Screw
231	1485227	231-PURIII4000	Crosswind Gear
231B	1485218	231B-PURIII3000	Screw Crosswind Gear
233	1485198	233-PURIII3000	Bearing Cover Assembly
1	1485226	1-PURIII4000	Housing
8	1308047	8-CFT3000	Main Gear
8A	1191028	8A-3000SG	Shim
8B	1485199	8B-PURIII3000	Shim B
15	1485220	15-PURIII3000	Handle Assembly
19	1485212	19-PURIII3000	Pinion Gear
19A	1191252	19A-3000SG	Bushing(2 req)
20A	1203973	20A-3000PUR	Ball Bearing
20B	1203974	20B-3000PUR	Ball Bearing
20C	1203975	20C-3000PUR	Ball Bearing (2 req)
21	1308052	21-CFT3000	Bearing Retainer
21A	1485211	21A-PURIII3000	Bearing Retainer Screw (3 req)
21B	1192648	21B-3000SG	Collar
8	1308047	8-CFT3000	Main Gear
8A	1191028	8A-3000SG	Shim
8B	1485199	8B-PURIII3000	Shim B
20C	1203975	20C-3000PUR	Ball Bearing (2 req)
231	1485227	231-PURIII4000	Crosswind Gear
231B	1485218	231B-PURIII3000	Screw Crosswind Gear

407-PURIII4000 Rev. 0 11-28-17

1481295