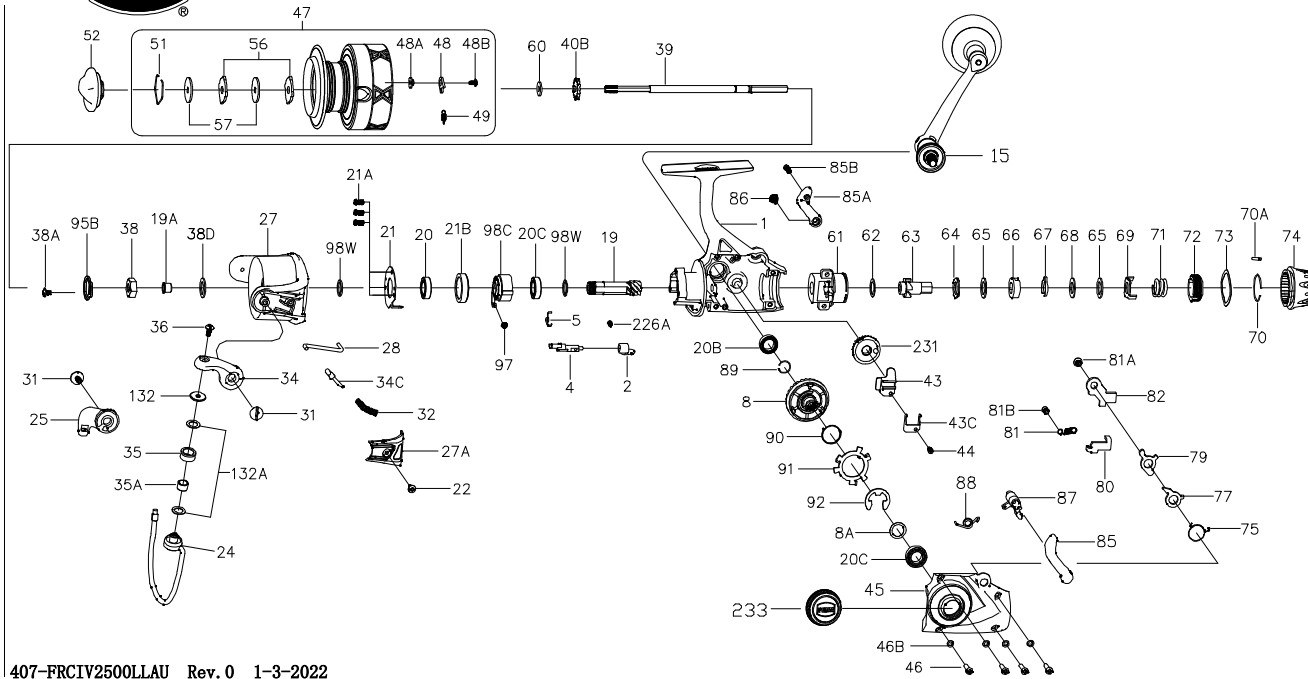




PARTS LIST FOR MODEL FRCIV2500LLAU



KEY NO.	PART NO.	PENN STYLE NO.	DESCRIPTION
48A	1214226	48A-3000SG	Click Tongue Washer
48B	1450260	48B-PAS2500	Spool Click Screw
49	1211605	49-3000SG	Click Tongue Spring
51	1313823	51-CFT2500	Drag Retaining Ring
52	1514308	52-FRCII2000	Drag Knob Assembly
56	1313825	56-CFT2500	Drag Washer (2 req)
57	1192041	57-2000SG	Keyed Washer (2 req)
60	1192059	60-2000SG	Thrust Washer
61	1380468	61-FRCII2500LL	Rear Drag Bracket
62	1371358	62-FRCII4000LL	Washer
63	1371359	63-FRCII4000LL	Ratchet
64	1371360	64-FRCII4000LL	Eared Washer
65	1371361	65-FRCII4000LL	Friction Washer (2 req)
66	1371362	66-FRCII4000LL	Click Spring Sleeve
67	1371363	67-FRCII4000LL	Click Spring
68	1371364	68-FRCII4000LL	Keyed Drag Washer
69	1371365	69-FRCII4000LL	Eared Washer
70	1371366	70-FRCII4000LL	Retaining Ring
70A	1371367	70A-FRCII4000LL	Click Pin
71	1371368	71-FRCII4000LL	Rear Drag Spring
72	1371369	72-FRCII4000LL	Drag Sleeve
73	1371370	73-FRCII4000LL	Spring Washer
74	1371371	74-FRCII4000LL	Rear Drag
75	1371372	75-FRCII4000LL	Release Pawl Spring
77	1380470	77-FRCII2500LL	Release Pawl
79	1380471	79-FRCII2500LL	Return Pawl
80	1380472	80-FRCII2500LL	N-R Pawl
81	1380473	81-FRCII2500LL	N-R Pawl Spring
81A	1324171	38A-BTLII4000	Rotor Locking Plate Screw
81B	1514347	81B-FRCII2500LL	Screw
82	1380475	82-FRCII2500LL	Retaining Plate
85	1380476	85-FRCII2500LL	Left Lever
85A	1380477	85A-FRCII2500LL	Right Lever
85B	1371381	85B-FRCII4000LL	Screw
86	1251748	36-1000FRC	Bail Stud Screw
87	1380478	87-FRCII2500LL	Lever Bar
88	1380479	88-FRCII2500LL	Lever Spring
89	1371385	89-FRCII4000LL	Retaining Ring
90	1371386	90-FRCII4000LL	Release Spring
91	1371387	91-FRCII4000LL	Release Plate
92	1371388	92-FRCII4000LL	Retaining Washer
95B	1308081	95B-CFT3000	Rotor Locking Plate
97	1192189	97-2000SG	Clutch Spring
98C	1192211	98C-2000SG	Clutch/Sleeve Assembly
98W	1204004	98W-3000PUR	Clutch Washer
98W	1192229	98W-3000SG	Clutch Washer
132	1364008	132-BTLII2500	Roller Washer
132A	1192301	132A-2000SG	Line Roller Washer (2 req)
226A	1192473	226A-3000SG	Rear Cover Screw
231	1313828	231-CFT2500	Crosswind Gear
233	1514304	233-FRCIII1000	Bearing Cover Assy

407-FRCIV2500LLAU Rev. 0 1-3-2022

1579988

KEY NO.	PART NO.	PENN STYLE NO.	DESCRIPTION
1	1580811	1-FRCIV2500LLAU	Housing Assembly
2	1380461	2-FRCII2500LL	A/R Lever
4	1313805	4-CFT2500	A/R Shaft
5	1313806	5-CFT2500	A/R Spring
8	1371350	8-FRCII4000LL	Main Gear
8A	1191028	8A-3000SG	Shim
15	1580812	15-FRCIV2500LLAU	Handle Assembly
19	1380463	19-FRCII2500LL	Pinion Gear
19A	1191252	19A-3000SG	Pinion Bushing
20	1308050	20-CFT3000	Upper Pinion Ball Bearing
20B	1203974	20B-3000PUR	Ball Bearing
20C	1203975	20C-3000PUR	Ball Bearing (2 req)
21	1192629	21-2000SG	Bearing Retainer
21A	1192644	21A-3000SG	Bearing Retainer Screw (3 req)
21B	1192646	21B-2000SG	Collar
22	1203978	22-3000PUR	Bail Pivot Cover Screw
24	1313809	24-CFT2500	Bail Wire
25	1313810	25-CFT2500	Bail Holder
27	1524120	27-FRCII12500	Rotor

KEY NO.	PART NO.	PENN STYLE NO.	DESCRIPTION
27A	1313812	27A-CFT2500	Bail Pivot Cover
28	1313813	28-CFT2500	Trip Lever
31	1313814	31-CFT2500	Bail Arm Screw (2 req)
32	1191583	32-2000SG	Bail Spring
34	1313815	34-CFT2500	Bail Arm
34C	1313816	34C-CFT2500	Pivot Arm
35	1313817	35-CFT2500	Line Roller
35A	1313818	35A-CFT2500	Line Roller Bushing
36	1251748	36-1000FRC	Bail Stud Screw
38	1191727	38-2000SG	Rotor Nut
38A	1203995	38A-3000PUR	Rotor Locking Plate Screw
38D	1308070	38D-CFT3000	Rotor Nut Washer
39	1380464	39-FRCII2500LL	Main Shaft
40B	1191778	40B-2000SG	Click Ratchet
43	1380465	43-FRCII2500LL	Crosswind Block
43C	1371353	43C-FRCII4000LL	Main Shaft Holder
44	1371354	44-FRCII4000LL	Crosswind Block Screw
45	1514571	45-FRCIII2500LL	Housing Cover Assy
46	1371356	46-FRCII4000LL	Housing Cover Screw (4 req)
46B	1191907	46B-3000SG	Housing Cover Washer (4 req)
47	1577378	47-FRCIV2500LL	Spool Assembly
48	1211604	48-3000SG	Click Tongue