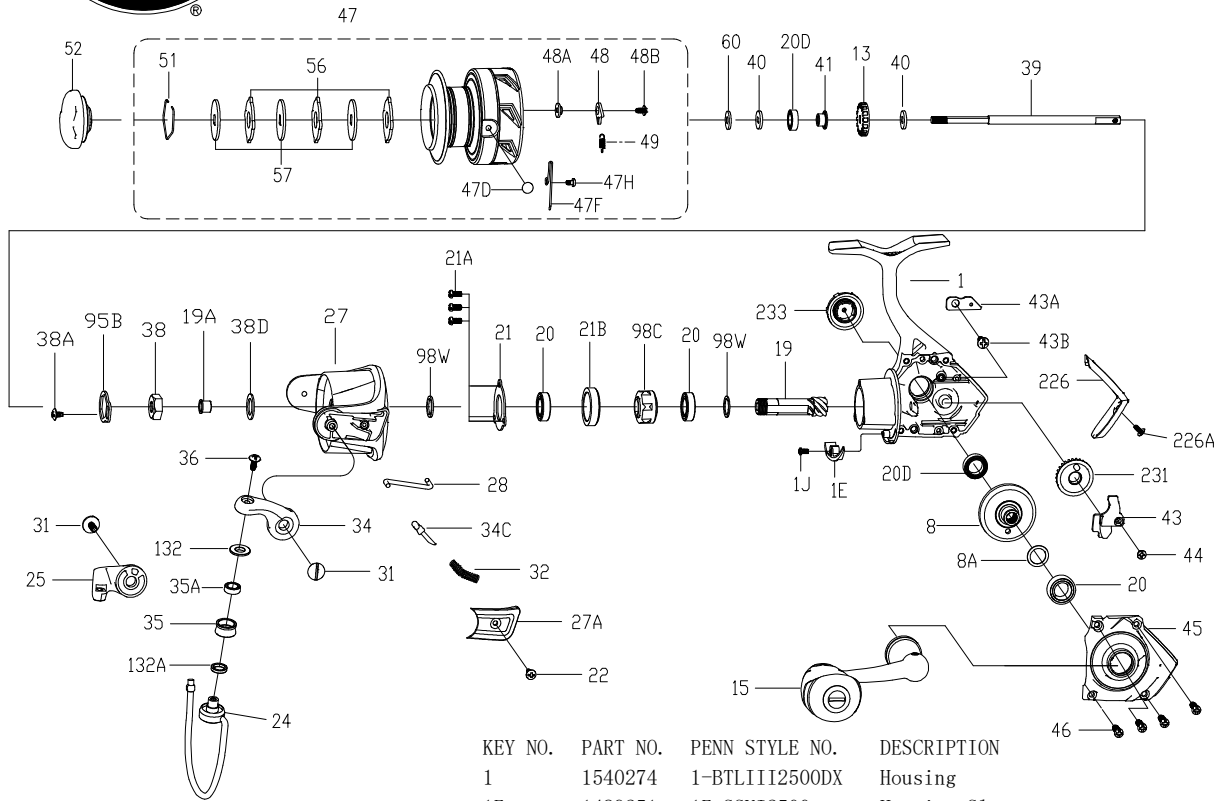




**PARTS LIST FOR MODEL BTLIII2500DX**



KEY NO.	PART NO.	PENN STYLE NO.	DESCRIPTION
1	1540274	1-BTLIII2500DX	Housing
1E	1489251	1E-SSVI2500	Housing Slope
1J	1489177	1J-SSVI3500	Housing Slope Screw
8	1529181	8-BTLIII3000	Main Gear
8A	1191028	8A-3000SG	Shim
13	1529419	13-BTLIII1000	Click Ratchet
15	1529470	15-BTLIII2500LE	Handle Assembly
19	1529447	19-BTLIII2000	Pinion Gear
19A	1364314	19A-BTLII2500	Pinion Bushing
20	1308050	20-CFT3000	Ball Bearing (3 req)
20D	1211610	20D-5000BTL	Spool Ball Bearing
20D	1211567	20D-2000BTL	Spool Ball Bearing
21	1485197	21-PURIII2500	Bearing Retainer
21A	1192644	21A-3000SG	Bearing Retainer Screw (3 req)
21B	1192646	21B-2000SG	Collar
22	1203978	22-3000PUR	Bail Pivot Cover Screw
24	1529460	24-BTLIII2500	Bail Wire Assembly
25	1540383	25-BTLIII2500DX	Bail Holder

**407-BTLIII2500DX Rev. 0 12-5-2020**

**1538013**

KEY NO.	PART NO.	PENN STYLE NO.	DESCRIPTION
27	1540275	27-BTLIII2500DX	Rotor
27A	1540276	27A-BTLIII2500DX	Bail Pivot Cover
28	1529463	28-BTLIII2500	Trip Lever
31	1313814	31-CFT2500	Bail Arm Screw (2 req)
32	1529429	32-BTLIII1000	Bail Spring
34	1540382	34-BTLIII2500DX	Bail Arm
34C	1313816	34C-CFT2500	Pivot Arm
35	1529453	35-BTLIII2000	Line Roller
35A	1489200	35A-SSVI3500	Roller Bearing
36	1251748	36-1000FRC	Bail Stud Screw
38	1191727	38-2000SG	Rotor Nut
38A	1203995	38A-3000PUR	Rotor Locking Plate Screw
38D	1308070	38D-CFT3000	Rotor Nut Washer
39	1529464	39-BTLIII2500	Main Shaft
40	1249042	42-1000BTL	Spool Shaft Washer (2 req)
41	1211573	41-2000BTL	Spool Bushing
43	1313820	43-CFT2500	Crosswind Block
43A	1489274	43A-SSVI2500	Crosswind Block Plate
43B	1489213	43B-SSVI3500	Crosswind Block Plate Screw
44	1191843	44-3000SG	Crosswind Block Screw
45	1540277	45-BTLIII2500DX	Housing Cover
46	1192645	21A-5000SG	Bearing Retainer Screw (4 req)
47	1540278	47-BTLIII2500DX	Spool Assembly
47D	1489217	47D-SSVI3500	Line Clip
47F	1489218	47F-SSVI3500	Line Clip Spring
47H	1489219	47H-SSVI3500	Line Clip Spring Screw
48	1529436	48-BTLIII1000	Click Tongue
48A	1529437	48A-BTLIII1000	Click Tongue Washer
48B	1450260	48B-PAS2500	Spool Click Screw
49	1211605	49-3000SG	Click Tongue Spring
51	1313823	51-CFT2500	Drag Retaining Ring
52	1529457	52-BTLIII2000	Drag Knob Assembly
56	1313825	56-CFT2500	Drag Washer (3 req)
57	1192041	57-2000SG	Keyed Washer (3 req)
60	1192059	60-2000SG	Thrust Washer
95B	1308081	95B-CFT3000	Rotor Locking Plate
98C	1489279	98C-SSVI2500	Clutch/Sleeve Assembly
98W	1204004	98W-3000PUR	Clutch Washer
98W	1192229	98W-3000SG	Clutch Washer
132	1489280	132-SSVI2500	Roller Washer
132A	1489281	132A-SSVI2500	Line Roller Bushing
226	1529458	226-BTLIII2000	Rear Cover
226A	1529386	226A-BTLIII3000	Rear Cover Screw
231	1313828	231-CFT2500	Crosswind Gear
233	1529387	233-BTLIII3000	Bearing Cover Assy