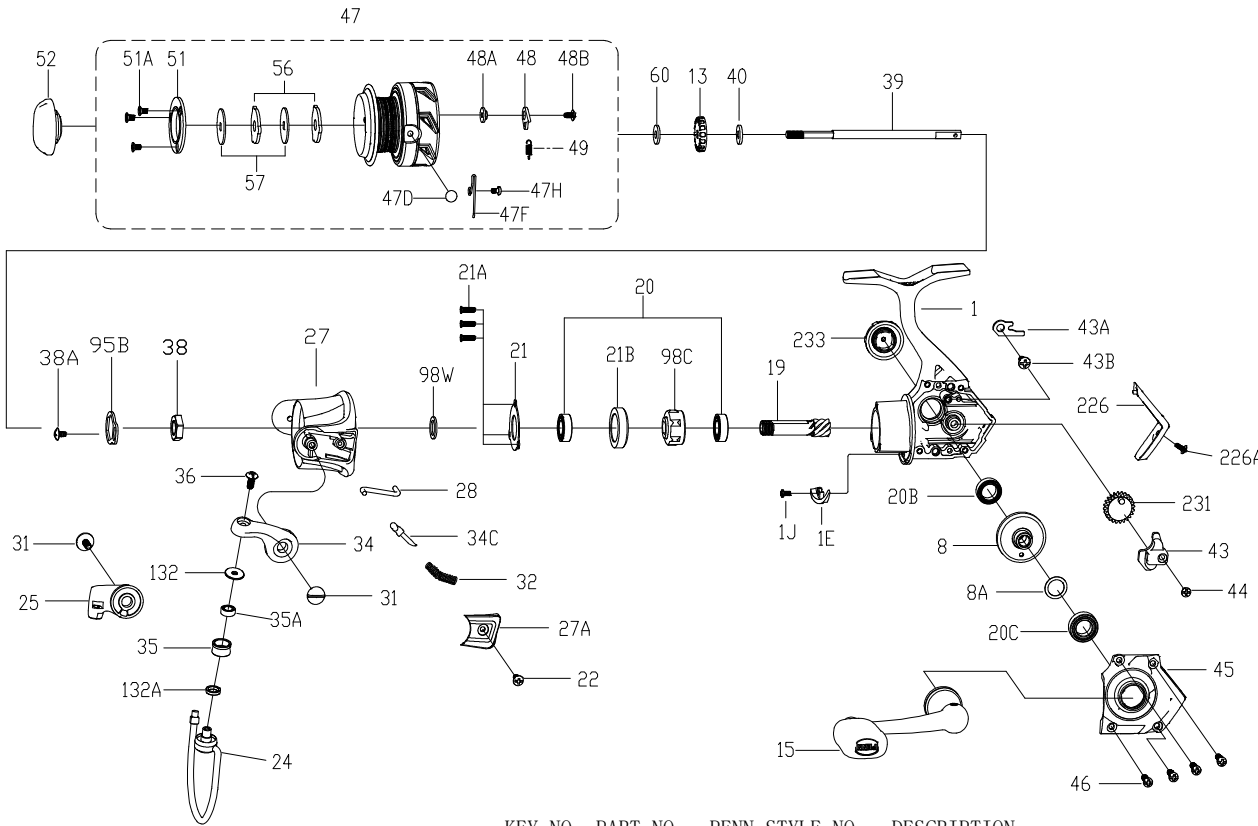




PARTS LIST FOR MODEL BTLIII1000



407-BTLIII1000 Rev. 0 9-1-2019

1518029

KEY NO.	PART NO.	PENN STYLE NO.	DESCRIPTION
1	1529416	1-BTLIII1000	Housing
1E	1529417	1E-BTLIII1000	Housing Slope
1J	1489177	1J-SSVI3500	Housing Slope Screw
8	1529418	8-BTLIII1000	Main Gear
8A	1191028	8A-3000SG	Shim
13	1529419	13-BTLIII1000	Click Ratchet
15	1529420	15-BTLIII1000	Handle Assembly
19	1529421	19-BTLIII1000	Pinion Gear
20	1313843	20-CFT1000	Ball Bearing (2 req)
20B	1211610	20D-5000BTL	Spool Ball Bearing
20C	1308050	20-CFT3000	Ball Bearing
21	1529422	21-BTLIII1000	Bearing Retainer
21A	1207723	21A-1000SG	Bearing Retainer Screw (3 req)
21B	1529423	21B-BTLIII1000	Collar
22	1203978	22-3000PUR	Bail Pivot Cover Screw

KEY NO.	PART NO.	PENN STYLE NO.	DESCRIPTION
24	1529424	24-BTLIII1000	Bail Wire Assembly
25	1529425	25-BTLIII1000	Bail Holder
27	1529426	27-BTLIII1000	Rotor
27A	1529427	27A-BTLIII1000	Bail Pivot Cover
28	1529428	28-BTLIII1000	Trip Lever
31	1313814	31-CFT2500	Bail Arm Screw (2 req)
32	1529429	32-BTLIII1000	Bail Spring
34	1313851	34-CFT1000	Bail Arm
34C	1313816	34C-CFT2500	Pivot Arm
35	1529430	35-BTLIII1000	Line Roller
35A	1529431	35A-BTLIII1000	Line Roller Bushing
36	1211597	36-3000BTL	Bail Stud Screw
38	1313853	38-CFT1000	Rotor Nut
38A	1203995	38A-3000PUR	Rotor Locking Plate Screw
39	1529432	39-BTLIII1000	Main Shaft
40	1249042	42-1000BTL	Spool Shaft Washer
43	1207729	43-1000SG	Crosswind Block
43A	1207730	43A-1000SG	Crosswind Block Plate
43B	1191826	43B-3000SG	Crosswind Block Plate Screw
44	1191843	44-3000SG	Crosswind Block Screw
45	1529433	45-BTLIII1000	Housing Cover Assy
46	1192645	21A-5000SG	Housing Cover Screw (4 req)
47	1529434	47-BTLIII1000	Spool Assembly
47D	1489217	47D-SSVI3500	Line Clip
47F	1529435	47F-BTLIII1000	Line Clip Spring
47H	1489219	47H-SSVI3500	Line Clip Spring Screw
48	1529436	48-BTLIII1000	Click Tongue
48A	1529437	48A-BTLIII1000	Click Tongue Washer
48B	1529438	48B-BTLIII1000	Spool Click Screw
49	1529439	49-BTLIII1000	Click Tongue Spring
51	1211578	51-2000BTL	Retaining Spacer
51A	1191986	51A-3000SG	Retaining Screw (3 req)
52	1529440	52-BTLIII1000	Drag Knob Assembly
56	1313858	56-CFT1000	Drag Washer (2 req)
57	1251753	57-1000FRC	Keyed Washer (2 req)
60	1192059	60-2000SG	Thrust Washer
95B	1308081	95B-CFT3000	Rotor Locking Plate
98C	1529441	98C-BTLIII1000	Clutch/Sleeve Assembly
98W	1251754	98W-1000FRC	Clutch Washer
132	1529442	132-BTLIII1000	Roller Washer
132A	1529443	132A-BTLIII1000	Line Roller Washer
226	1529444	226-BTLIII1000	Rear Cover
226A	1529386	226A-BTLIII3000	Rear Cover Screw
231	1207737	231-1000SG	Crosswind Gear
233	1529387	233-BTLIII3000	Bearing Cover Assy