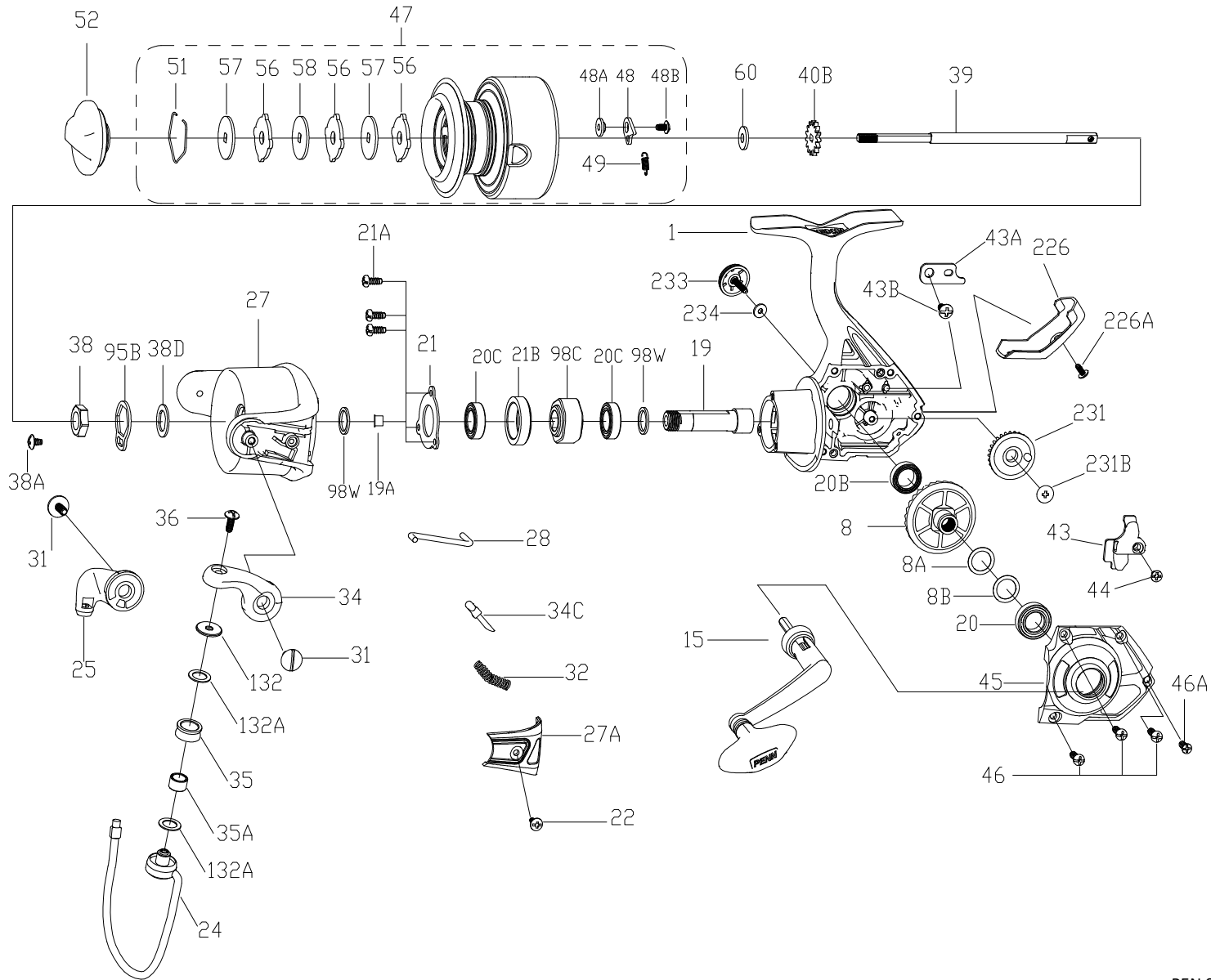




# WRTHII2500 EXPLODED DRAWING





Thank you for your recent PENN gear purchase. No matter where you fish or what you fish for, you can depend PENN to perform in any battle day in and day out. Now it's time to get your product registered and get out on the water.

<https://register.pennfishing.com>

KEY NO.	PART NO.	PENN STYLE NO.	DESCRIPTION	KEY NO.	PART NO.	PENN STYLE NO.	DESCRIPTION
1	1609380	1-WRTHII2500	Housing	40B	1191778	40B-2000SG	Click Ratchet
8	1514939	8-WRTH2500	Main Gear	43	1485208	43-PURIII2500	Crosswind Block
8A	1191028	8A-3000SG	Shim	43A	1191818	43A-3000SG	Crosswind Block Plate
8B	1485199	8B-PURIII3000	Shim B	43B	1203997	43B-3000PUR	Screw
15	1514940	15-WRTH2500	Handle Assembly	44	1191843	44-3000SG	Crosswind Block Screw
19	1495904	19-PURIII2500	Pinion Gear	45	1609383	45-WRTHII2500	Housing Cover
19A	1364314	19A-BTLII2500	Pinion Bushing	46	1485201	46-PURIII3000	Housing Cover Screw (3 req)
20	1514942	20-WRTH2500	Housing Bushing	46A	1485202	46A-PURIII3000	Housing Cover Screw
20B	1514941	20B-WRTH2500	Housing Bushing	47	1609384	47-WRTHII2500	Spool Assembly
20C	1203975	20C-3000PUR	Ball Bearing (2 req)	48	1211604	48-3000SG	Click Tongue
21	1485197	21-PURIII2500	Bearing Retainer	48A	1214226	48A-3000SG	Click Tongue Washer
21A	1204016	21A-5000PUR	Bearing Retainer Screw(3 req)	48B	1214189	48B-3000SG	Spool Click Screw
21B	1192646	21B-2000SG	Collar	49	1211605	49-3000SG	Click Tongue Spring
22	1203978	22-3000PUR	Bail Pivot Cover Screw	51	1313823	51-CFT2500	Drag Retaining Ring
24	1514943	24-WRTH2500	Bail Wire	52	1609385	52-WRTHII2500	Drag Knob Assembly
25	1514944	25-WRTH2500	Bail Holder	56	1192033	56-2000SG	Drag Washer (3 req)
27	1609381	27-WRTHII2500	Rotor	57	1192041	57-2000SG	Keyed Washer (2 req)
27A	1609387	27A-WRTHII2500	Bail Pivot Cover	58	1192049	58-2000SG	Eared Washer
28	1313813	28-CFT2500	Trip Lever	60	1192059	60-2000SG	Thrust Washer
31	1313814	31-CFT2500	Bail Arm Screw (2 req)	95B	1308081	95B-CFT3000	Rotor Locking Plate
32	1191583	32-2000SG	Bail Spring	98C	1192212	98C-3000SG	Clutch/Sleeve Assembly
34	1609382	34-WRTHII2500	Bail Arm	98W	1204004	98W-3000PUR	Clutch Washer(2 req)
34C	1313816	34C-CFT2500	Pivot Arm	132	1313826	132-CFT2500	Roller Washer
35	1313817	35-CFT2500	Line Roller	132A	1192301	132A-2000SG	Line Roller Washer (2 req)
35A	1313818	35A-CFT2500	Line Roller Bushing	226	1609386	226-WRTHII2500	Rear Cover
36	1251748	36-1000FRC	Bail Stud Screw	226A	1485205	226A-PURIII2500	Rear Cover Screw
38	1191727	38-2000SG	Rotor Nut	231	1485206	231-PURIII2500	Crosswind Gear
38A	1203995	38A-3000PUR	Rotor Locking Plate Screw	231B	1485207	231B-PURIII2500	Screw Crosswind Gear
38D	1308070	38D-CFT3000	Rotor Nut Washer	233	1514949	233-WRTH2500	Lock Knob
39	1313819	39-CFT2500	Main Shaft	234	1514950	234-WRTH2500	Lock Knob Washer

**WARNING:** Cancer and Reproductive Harm – [www.P65Warnings.ca.gov](http://www.P65Warnings.ca.gov)