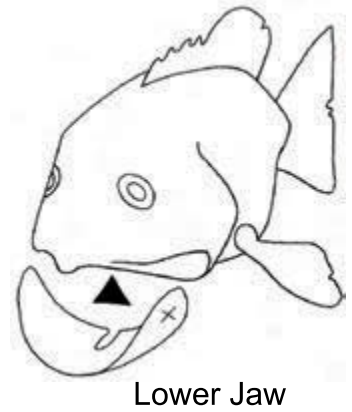
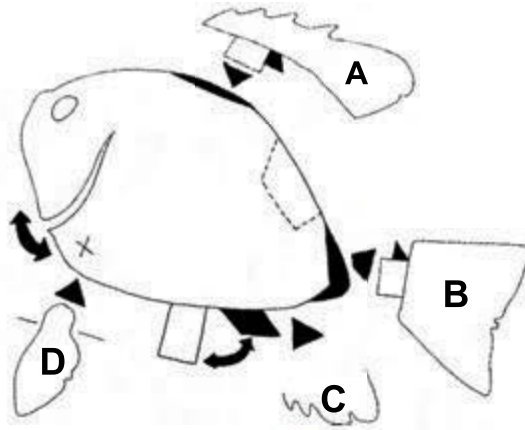


To make your paper model

You will need: scissors, glue for paper (glue sticks work well)



1. Cut out all pieces.



Lower Jaw



2. Cut gill plates.



3. Glue two pieces of fin types A, B and C together. Do not glue tabs.



4. Fold body in half along back (do not crease). Glue back tab into place on opposite side.



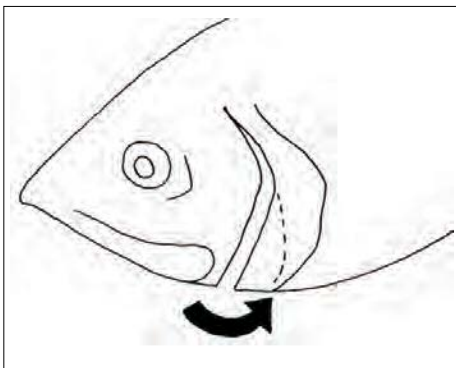
5. Glue fin A tabs to inside of body pieces (top of back).



6. Glue tail fin (B) tabs to inside of body.



7. Glue bottom tabs together and glue fins (C) in place.



8. Glue gill plates together. This will act as a "dart" and shape the head.



9. Glue lower jaw to inside walls of head, just covering the "X"s.

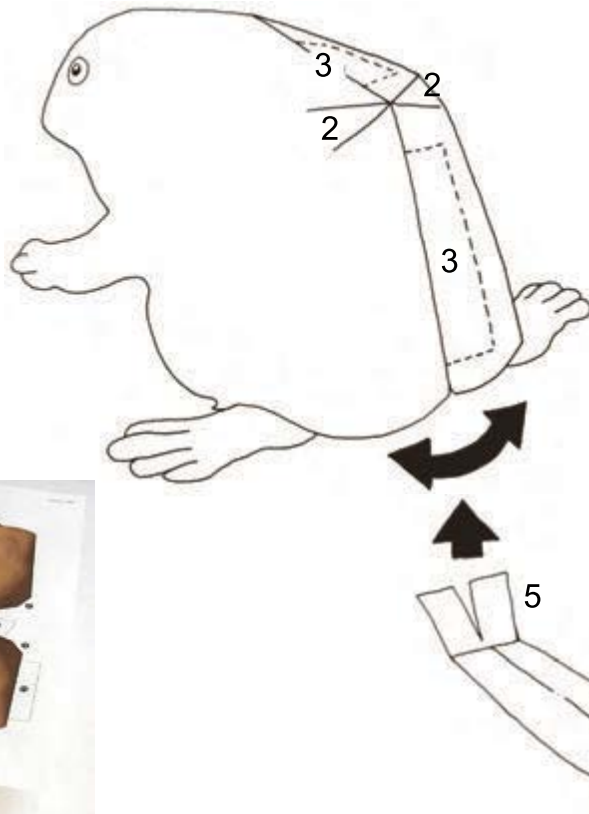


10. Glue fins "D" on the sides at the "X"s. Fold slightly outwards to support model.

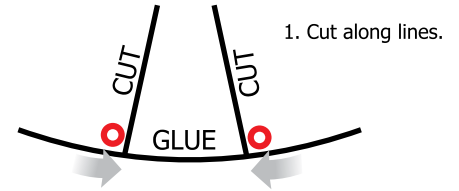


To make your paper model

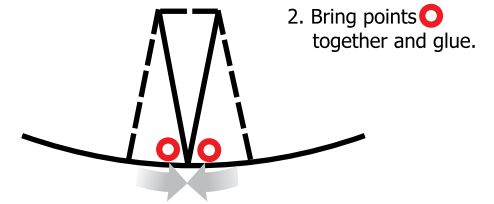
You will need: scissors, glue for paper (glue sticks work well)



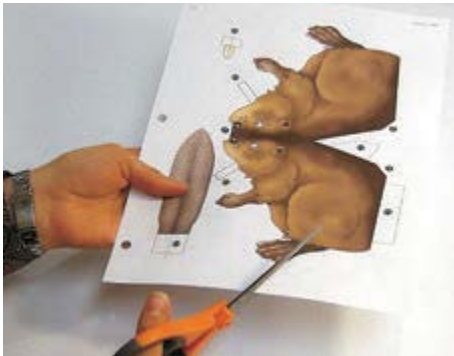
Darts: (shape your model)



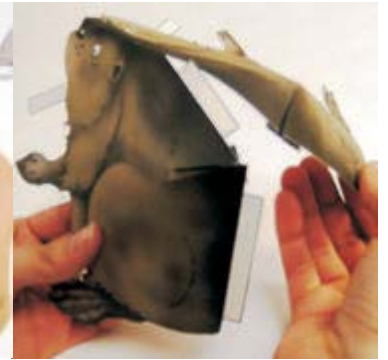
1. Cut along lines.



2. Bring points together and glue.



1. Cut out all pieces.

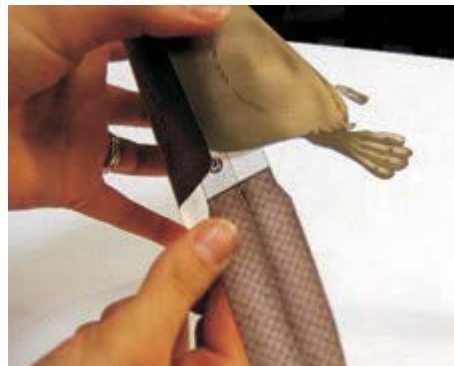


2. Cut and glue the 3 darts on the body and head.

3. Glue back together using tabs.



4. Overlap and glue chin tabs.



5. Cut tail tab in half. Glue tail to body. (see B)



6. Cut teeth tab along line and glue in place.

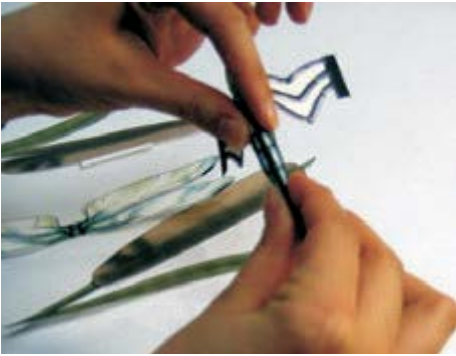
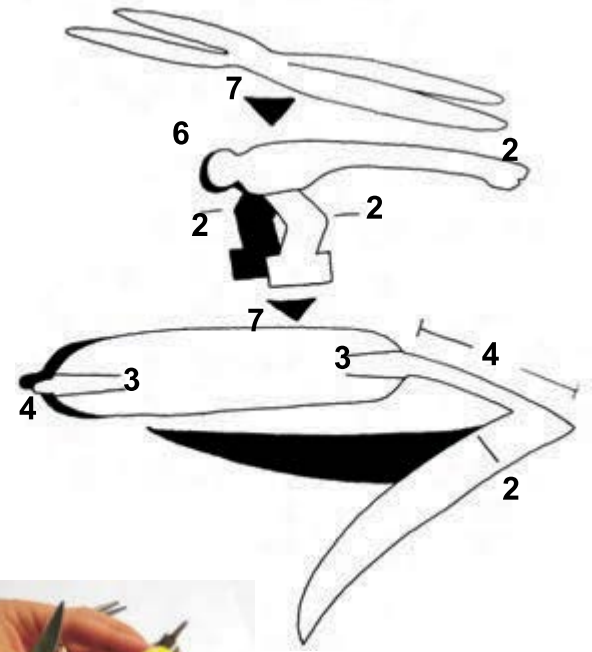
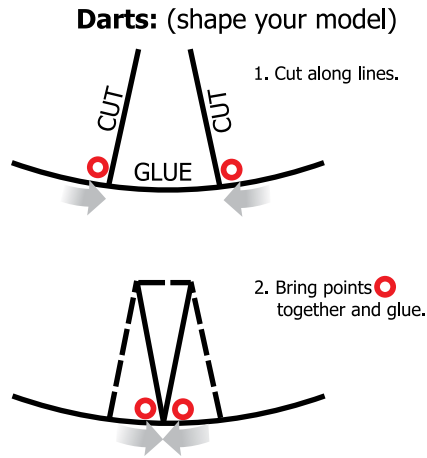


To make your paper model

You will need: scissors, glue for paper (glue sticks work well)



1. Cut out all pieces.



2. Fold dragonfly's back and legs, as well as back and leaves of cattail along lines.



3. Cut and glue darts on cattail flower.



4. Glue cattail stems together and tips of cattail flower. (Do not glue leaves.)



5. Join flower together by folding and gluing tab.



6. Glue dragonfly's head together.



7. Glue dragonfly's legs to cattail.



8. Glue wings to top of dragonfly's body.

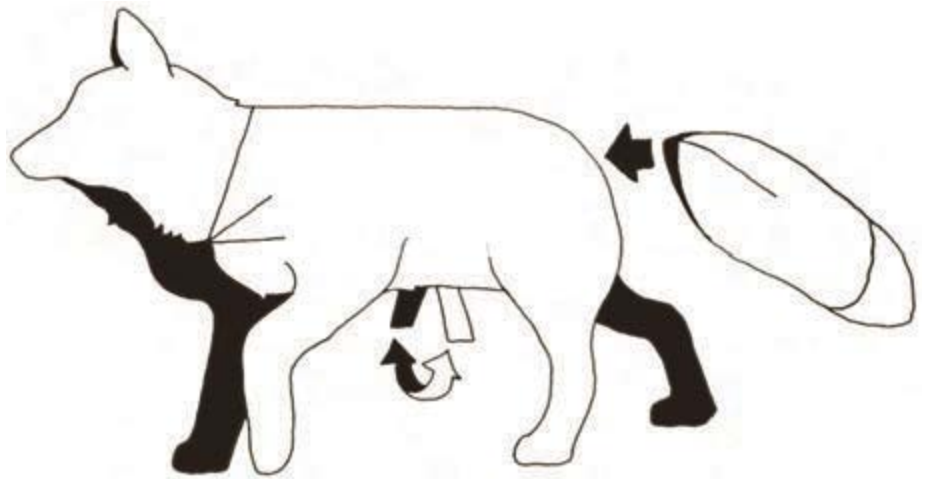


To make your paper model

You will need: scissors, glue for paper (glue sticks work well)



1. Cut out all pieces.



2. Fold head in three steps as shown above.



3. Cut & glue shoulder darts.



4. Glue tabs together under body.



5. Glue tips of nose and ears together.



6. Glue rump pieces together.



7. Cut slits in tail pieces and glue pieces together along outside edges.



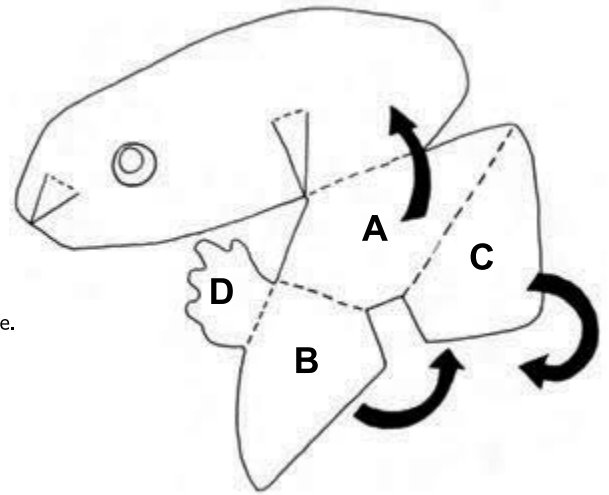
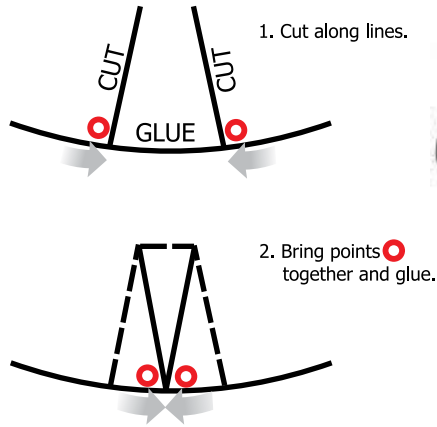
8. Slide tail on to rump and glue in place.



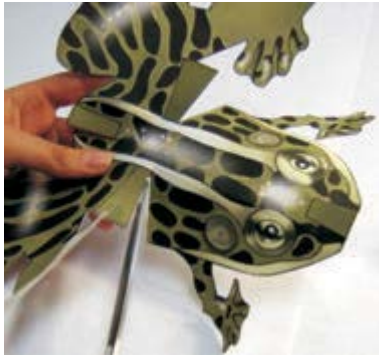
To make your paper model

You will need: scissors, glue for paper (glue sticks work well)

Darts: (shape your model)



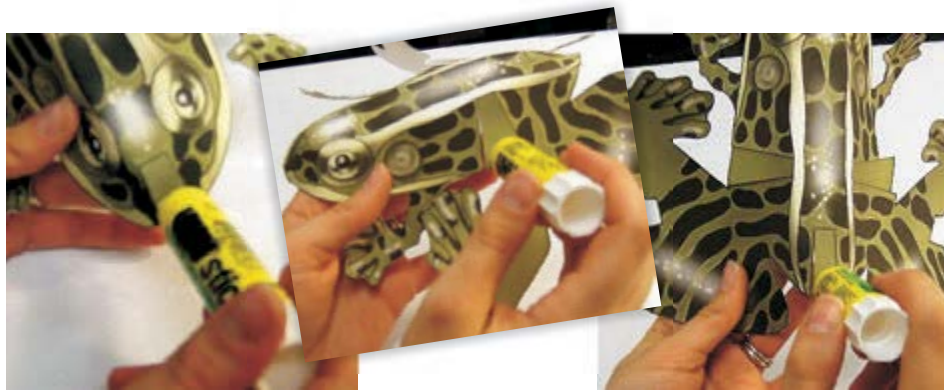
1. Cut out all pieces.



2. Cut darts (nose, rump and sides).



3. Fold along both sides of back from eyes to top of the rump dart.



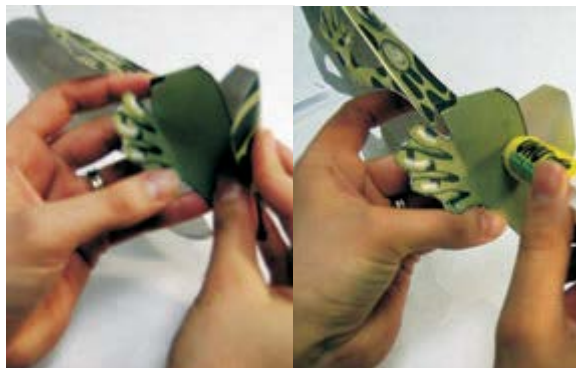
4. Glue nose, rump and side darts



5. Fold back legs (see A) up towards body along line.



6. Fold hind leg pieces down at point where spots stop.



7. Fold top part of leg piece "C" over leg piece "A" and glue.



8. Fold leg piece "D" and front legs to position frog.

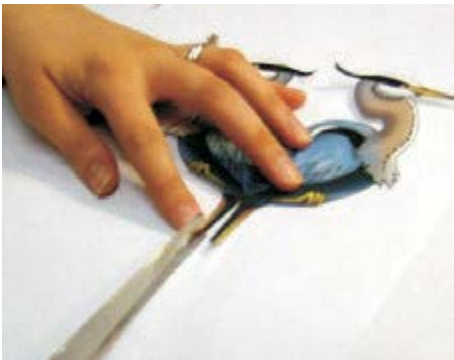
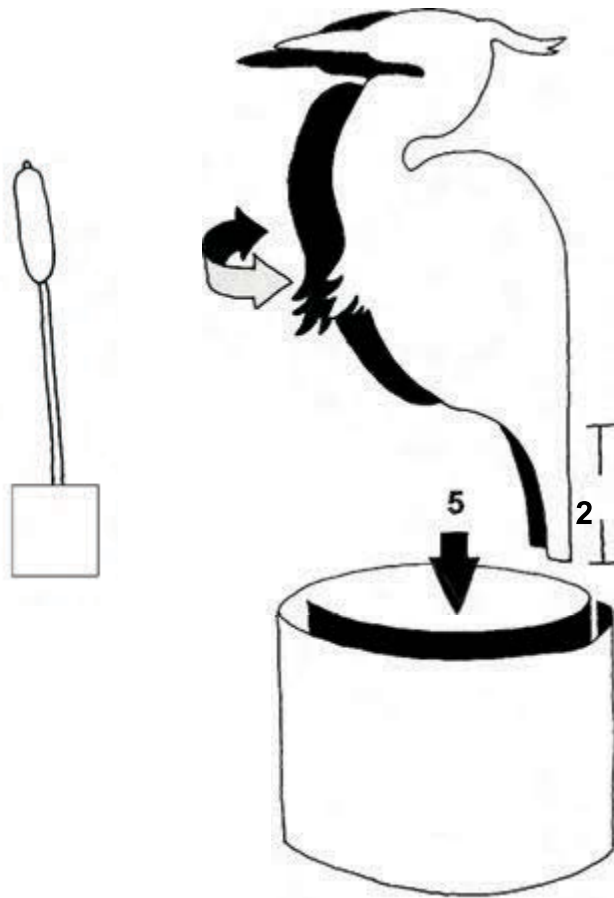


To make your paper model

You will need: scissors, glue for paper (glue sticks work well)



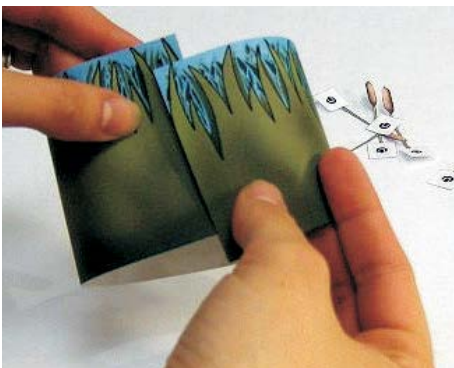
1. Cut out all pieces.



2. Cut heron legs ONLY apart.



3. Fold body in half. Glue together at head, neck and shoulder.



4. Roll cattail into a circle and glue to create a stand.



5. Glue back of heron's legs to cattail stand.

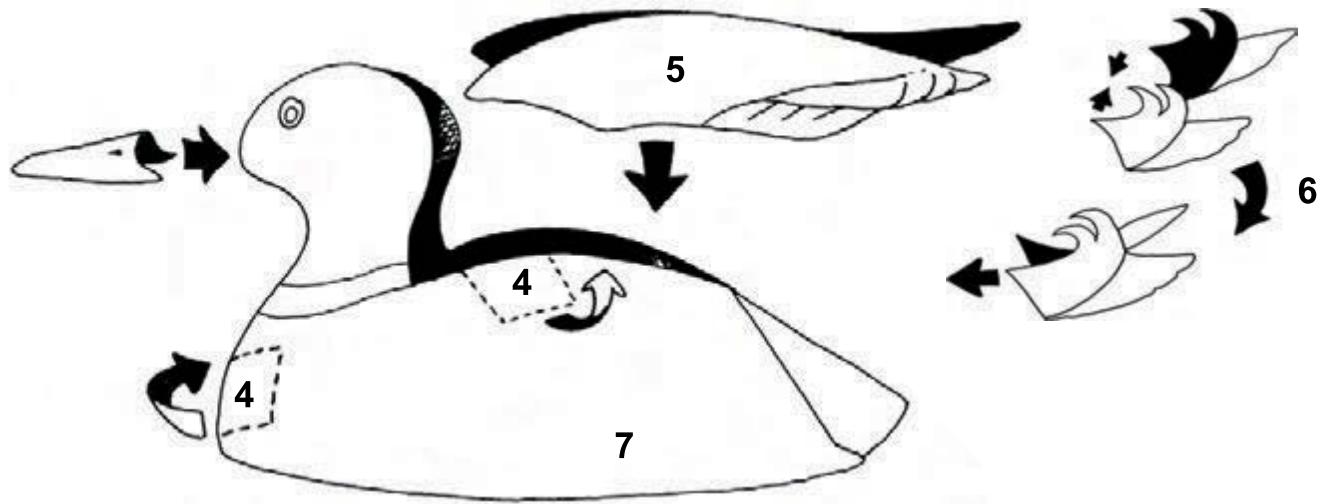


6. Glue cattail flower stalks to the inside of the stand.



To make your paper model

You will need: scissors, glue for paper (glue sticks work well)



1. Cut out all pieces.



2. Fold body along lines.



3. Glue sides of head together



4. Fold and glue body tabs to opposite side of body.



5. Glue folded wing piece onto duck's back.



6. Glue black, curly tips of tail pieces together. Slide piece into place and glue.



7. Position duck's bill on head and glue in place.



To make your paper model

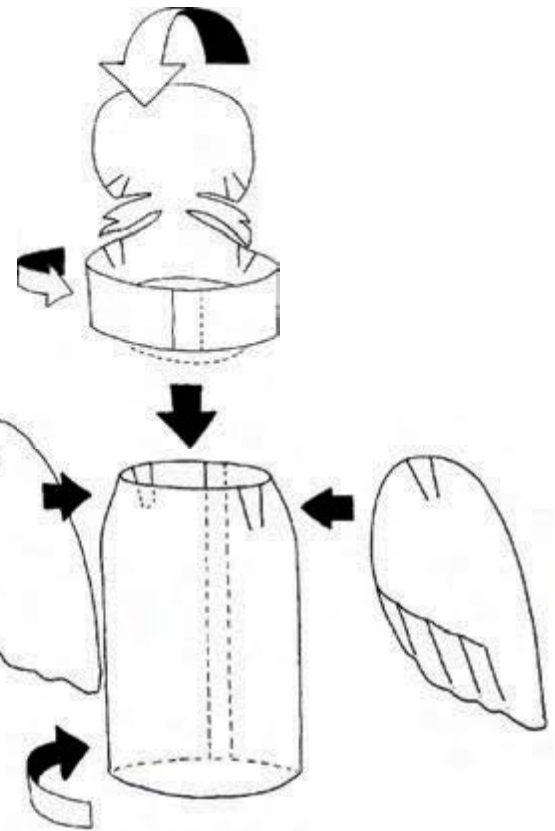
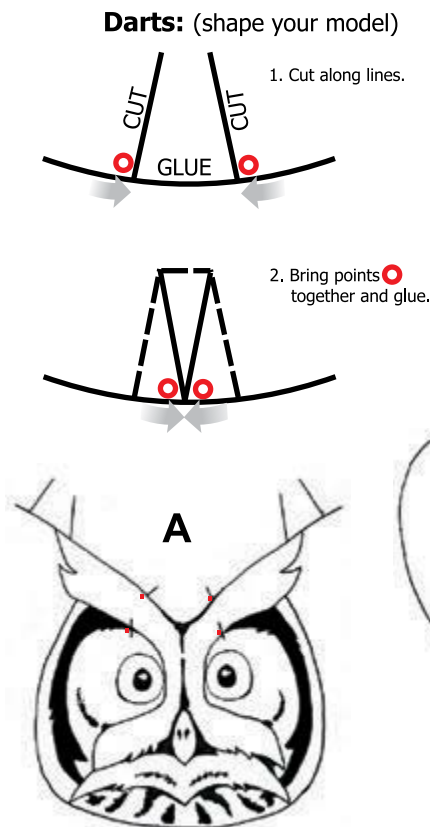
You will need: scissors, glue for paper (glue sticks work well)



1. Cut out all pieces.



2. Cut top and bottom of ear tufts to red dots (shown in diagram A).



3. Cut & glue 3 sets of darts. (2 on shoulders, 2 on wings.)



4. Create owl's body/stump by gluing tab.



5. Glue wings to body (place wing darts over body darts.)



6. "Size" head piece by placing it over body, then glue ends together.



7. Pull owl's head over the tab and glue into position (the chin should be slightly lower than collar for best fit.)



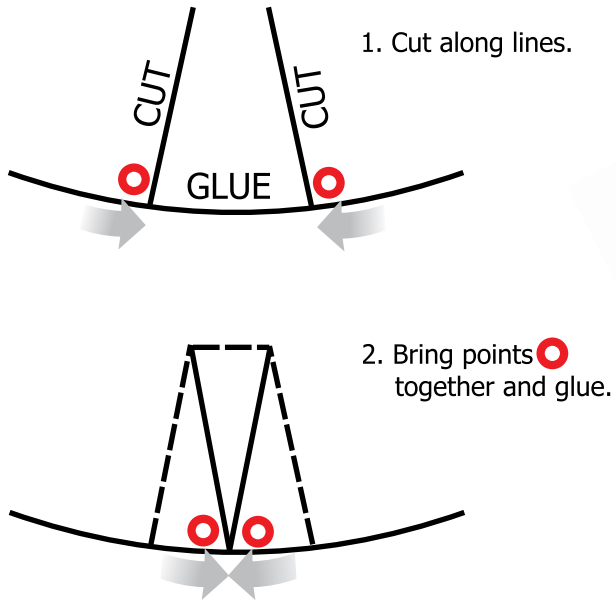
8. Do not glue head to body. The head collar sits over the body to allow owl's head to turn.



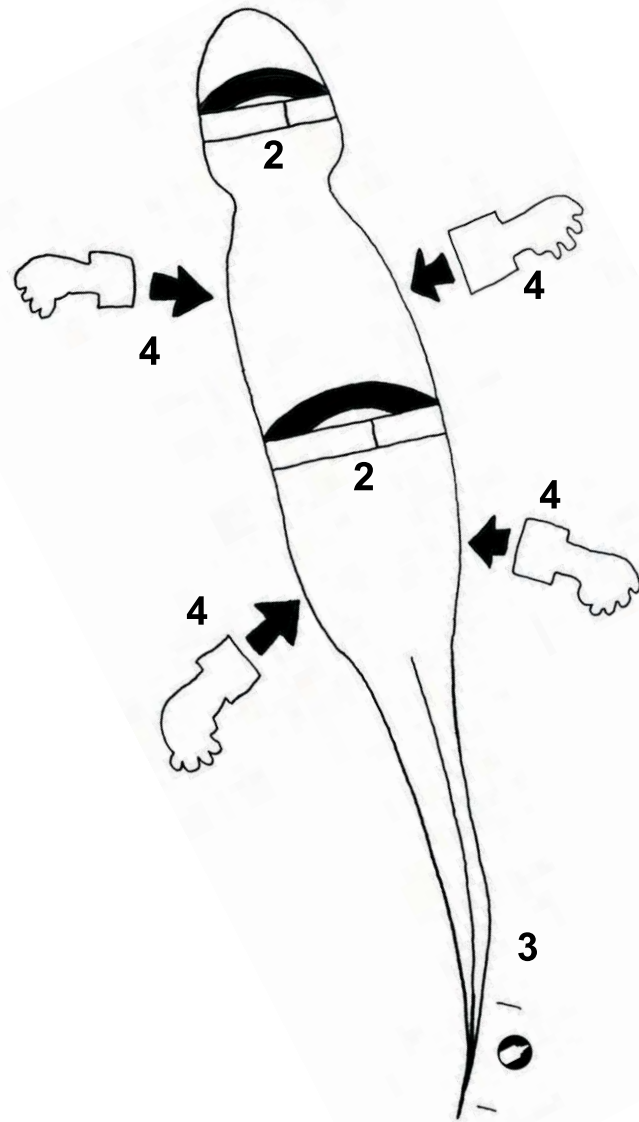
To make your paper model

You will need: scissors, glue for paper (glue sticks work well)

Darts: (shape your model)



1. Cut out all pieces.



2. Overlap and glue tabs to shape body.



3. Fold tail along line. Glue tip together.



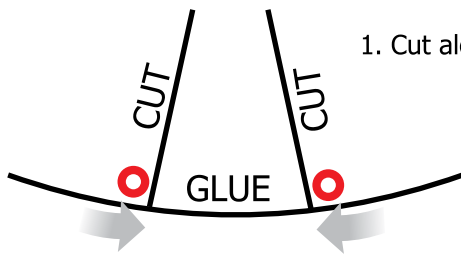
4. Glue legs to body.



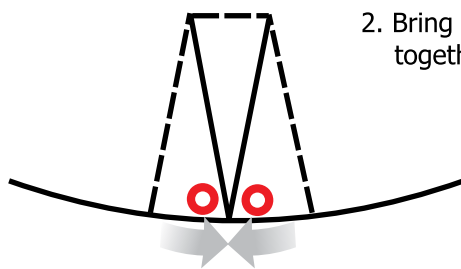
To make your paper model

You will need: scissors, glue for paper (glue sticks work well)

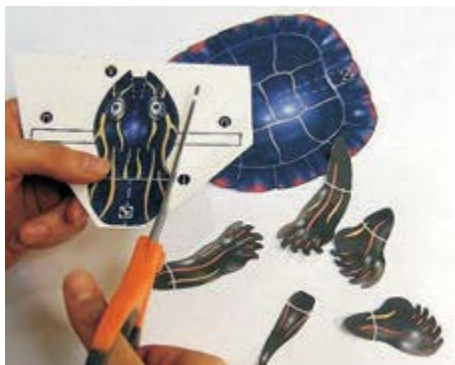
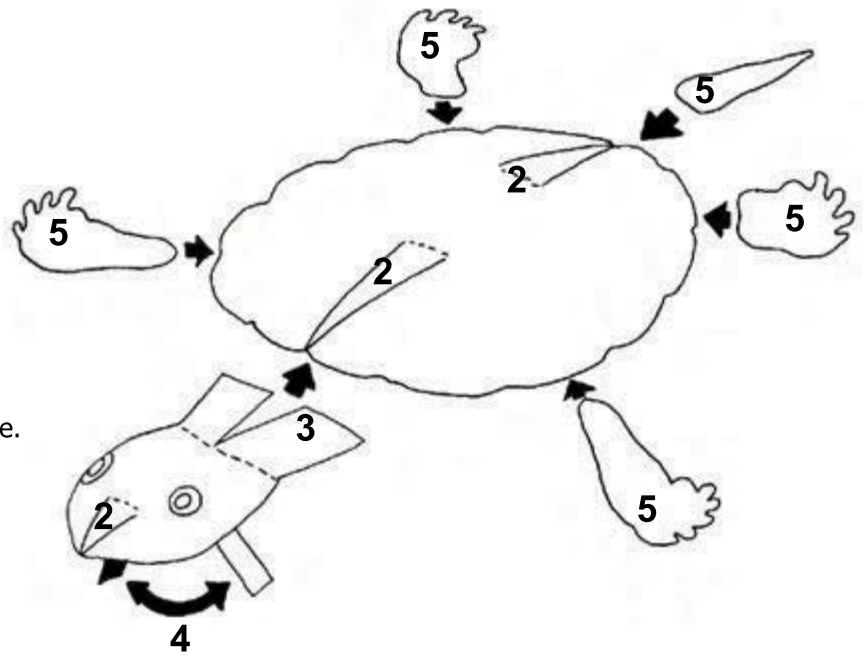
Darts: (shape your model)



1. Cut along lines.



2. Bring points together and glue.



1. Cut out all pieces.



2. Cut and glue darts on nose and shell.



3. Cut neck and glue neck to underside of shell.



4. Position head and glue tabs together underneath.



5. Glue legs and tail in place on underside of shell.

