

The background features a dark purple gradient with glowing cyan and magenta lines forming a diamond pattern. The text is centered in white.

AVEVA WORLD

ACCELERATE INDUSTRIAL INTELLIGENCE

Driving sustainable production



ENERGY OPTIMIZATION

AVEVA WORLD CONFERENCE
DATE MAY 2026
MILAN

Presented By:



TOMMI FALTMARS
DIRECTOR ENERGY MANAGEMENT

 **Newmont**TM



Disclaimer

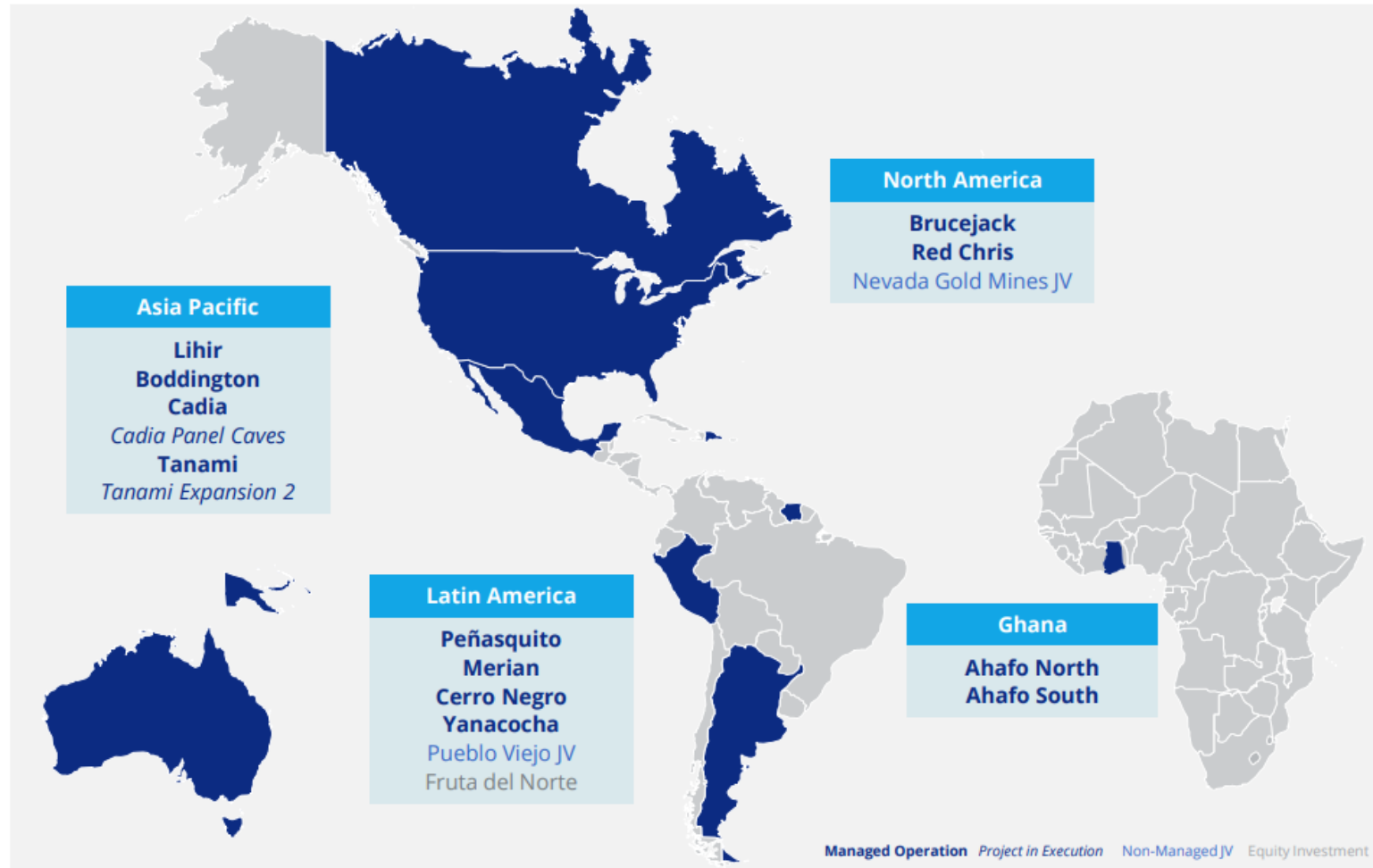


The content of this presentation reflects the presenter's personal views and interpretations, which may include forward-looking statements subject to risks and uncertainties. These do not necessarily represent the views or endorsement of Newmont Corporation or its affiliates. No obligation exists to update any statements made herein. For more information, refer to publicly available regulatory filings.

World Class Portfolio in Leading Mining Jurisdictions



Unmatched scale, longevity, and quality - built to deliver sustained performance for decades



12 managed operations located in the world's most favorable jurisdictions



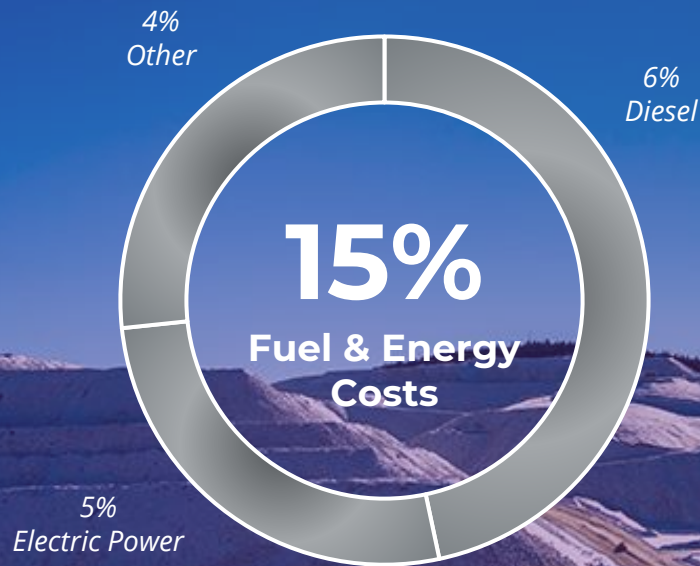
2 major projects in execution with the industry's leading organic project pipeline



Leading the gold sector with **118Moz in reserves** and **149Moz in resources**¹

(1) Gold Resources consist of 88.1Moz Measured and Indicated and 60.6Moz Inferred Resources. See cautionary statement re: mineral reserve and resource estimates.

Energy is third largest direct operating cost



Energy Risks

“Our operations may be adversely affected by rising energy prices or energy shortages”

– Newmont 2023 & 2024 Annual Report

Boddington

Lost Production due to **mandatory energy curtailments** to maintain grid stability.

Lihir

Operations challenged by **aging power infrastructure** and **regulatory uncertainty** to continue HFO usage.

Cadia

Current fuel management is **inconsistent, limiting** our ability to understand demand and cost.

Tanami

Load requirements are quickly growing; however, **natural gas prices are expected to increase.**

EMS Update — Merian Pilot Achievements to Date

From gap analysis to governed enterprise energy intelligence



Quantified achievements so far

6

Operational areas
reviewed to define energy users

2,000+

Hierarchy items
traversed from enterprise to sub-components

10+

Data sources
reconciled into one EMS model

12k

Data Points
Parameters Onboarded

11

Site blueprint
Merian pilot designed for enterprise scale

Visual proof of concept



Enterprise view



Fixed plant / Process view



Operations / Sankey view

1

Known universe established

Engineering review translated site complexity into a governed EMS model

- SEUs and OEU's defined across site systems
- Energy hierarchy aligned from enterprise to asset
- SAP FLOC strategy keeps classifications flexible

2

Data backbone taking shape

Source systems are being reconciled into one contextualized PI AF structure

- HFO, LFO fleet and electrical process loads modeled
- Data gaps catalogued and prioritized
- Standardized EnPI, event and roll-up logic underpins scale

3

User experience validated

Dashboards are being designed around decision rights, not just data display

- Executive, operations, fleet and fixed plant views demonstrated
- Stakeholder feedback shaping PI Vision and CONNECT UX
- Actionable insights connect energy, cost, emissions and performance

Ensuring Business Readiness for EMS



Technology is an Enabler, but People Drive Return on Investment

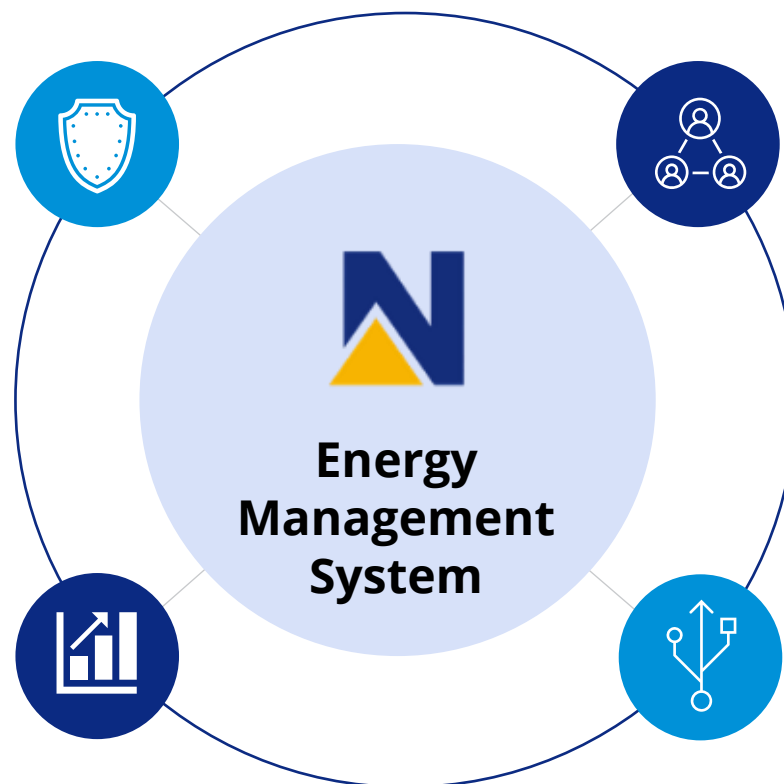
The EMS provides **data**
Leadership provides **incentives & motivation**
Our People create Return on Investment through **action**

Leadership

- Provides endorsement
- Sets KPIs
- Reviews Performance
- Drives Accountability

Change Mgmt.

- Sets objectives & goals
- Trains and enables users
- Sets governance structure
- Feedback cycles



Technology

- Existing OT Infrastructure
- Databricks
- AVEVA PI System
- AVEVA CONNECT

Assets

- Processing plant
- Mobile assets
- Power Gen Facilities, Camps & Facilities
- Tailing Storage

Newmont's Journey to Drive Energy Efficiency Across Operations



Challenge

- Energy and fuel represent a material cost and risk driver for mining operations. Across Newmont's portfolio, fuel and energy account for 15% of direct operating costs, exposing operations to price volatility, supply disruptions, and reliability risks while decisions are often made with limited real-time visibility into actual consumption and performance.

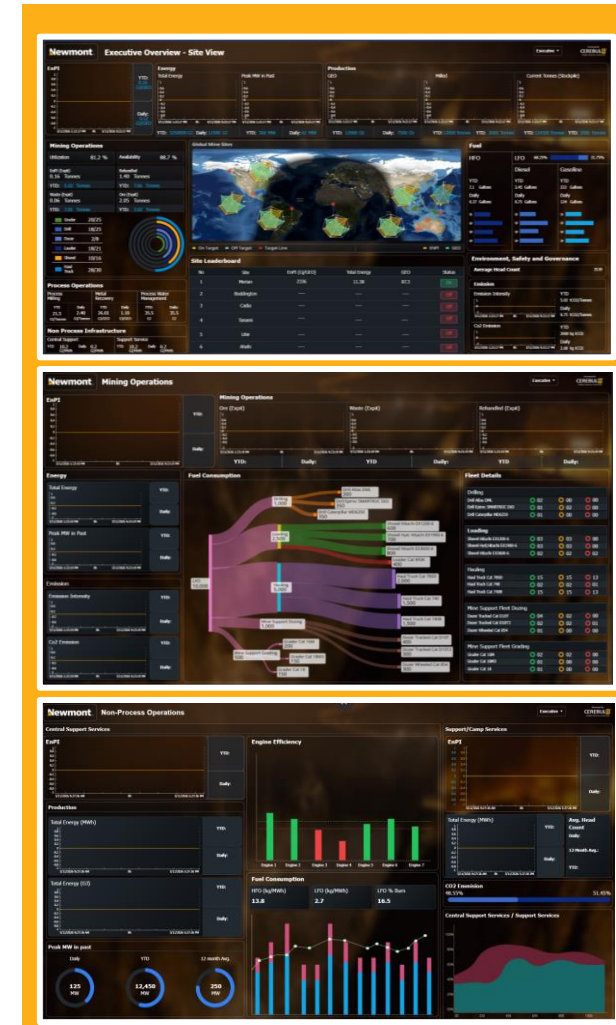
Solution

- Deployed AVEVA™ Connect platform™ to data collection, access, analysis, and reporting
- EMS Partner with AVEVA Certified Partner



Result

- While the EMS is still progressing toward full operational maturity, the Merian pilot is already establishing the foundation for measurable, sustainable value by giving us visibility over one of our largest operating cost drivers, energy and fuels.
- Preparing the organization for enterprise-wide rollout, using Merian as a proving ground to refine governance, data standards, and operating models that can be replicated across the portfolio.





Thank you

