



AVEVA WORLD

AVEVAWORLD

APRIL 8, 2025

Operations Control Edge

Roadmap

Rickard Norin

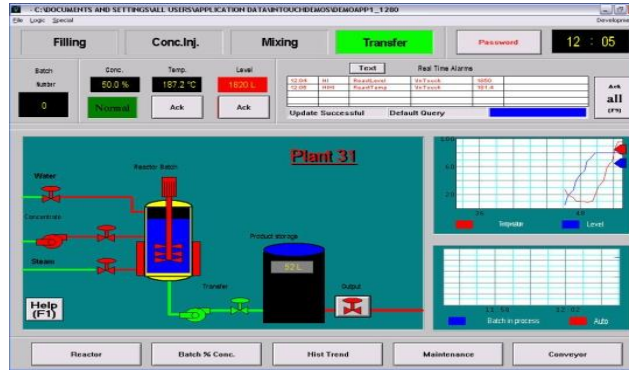
AVEVA

An incredible journey

Wonderware®

InduSoft®
Tools for Automation

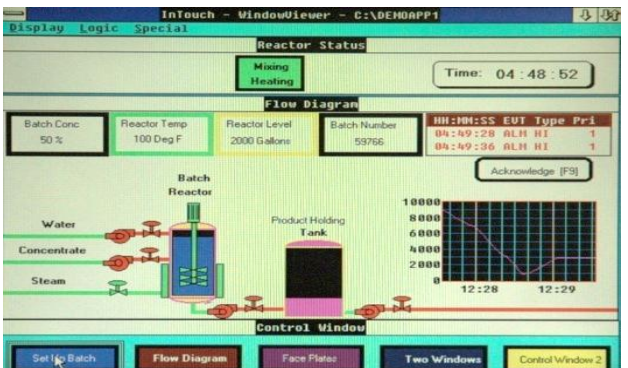
90s



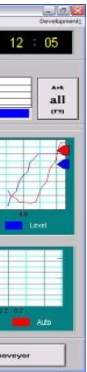
2010s



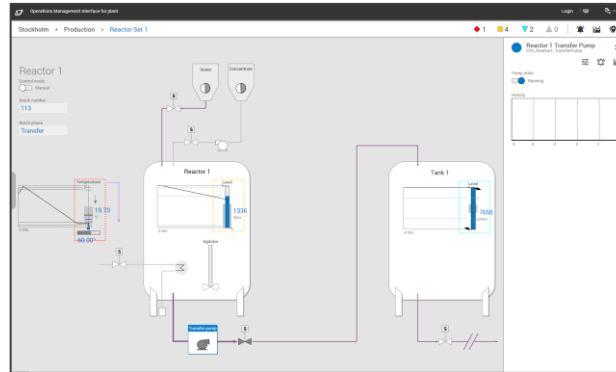
2000s



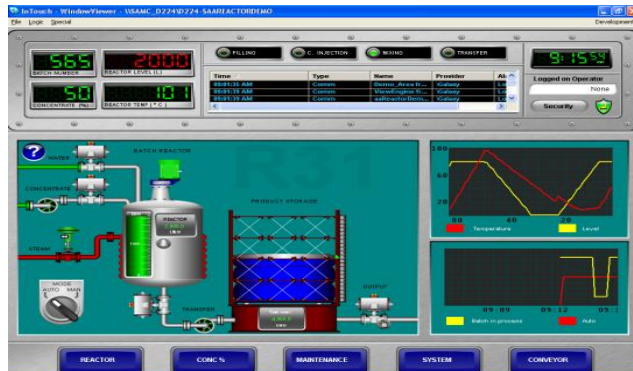
An incredible journey



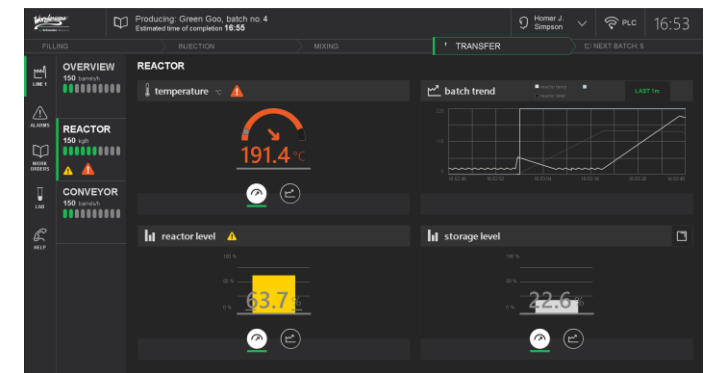
2010s



Today



2020s



The journey continues

AVEVA™ InTouch HMI & AVEVA™ Edge are embarking on a journey toward unification and modernization

- Modernization at an accelerated rate
- Emphasis on the legendary ease of use and productivity that the brands are known for
- Streamline journey toward System Platform
- **Continued commitment to protecting investments and providing incremental value**



Big picture roadmap

SUBJECT TO CHANGE AND REPRIORITIZATION

Acceleration

CONNECT-accelerated development and lifecycle management, development assistance through AI/ML, InTouch/Edge unification, continued modernization and expanded open extensibility

Independence

Platform independence, continued CONNECT-accelerated management of lifecycle and software estate

Hybridization

Cloud/edge hybrid solutions

Modernization

Modernized installer, rapid content creation from OPC UA & MQTT sources, workflow enhancements, open scripting, unified visualization



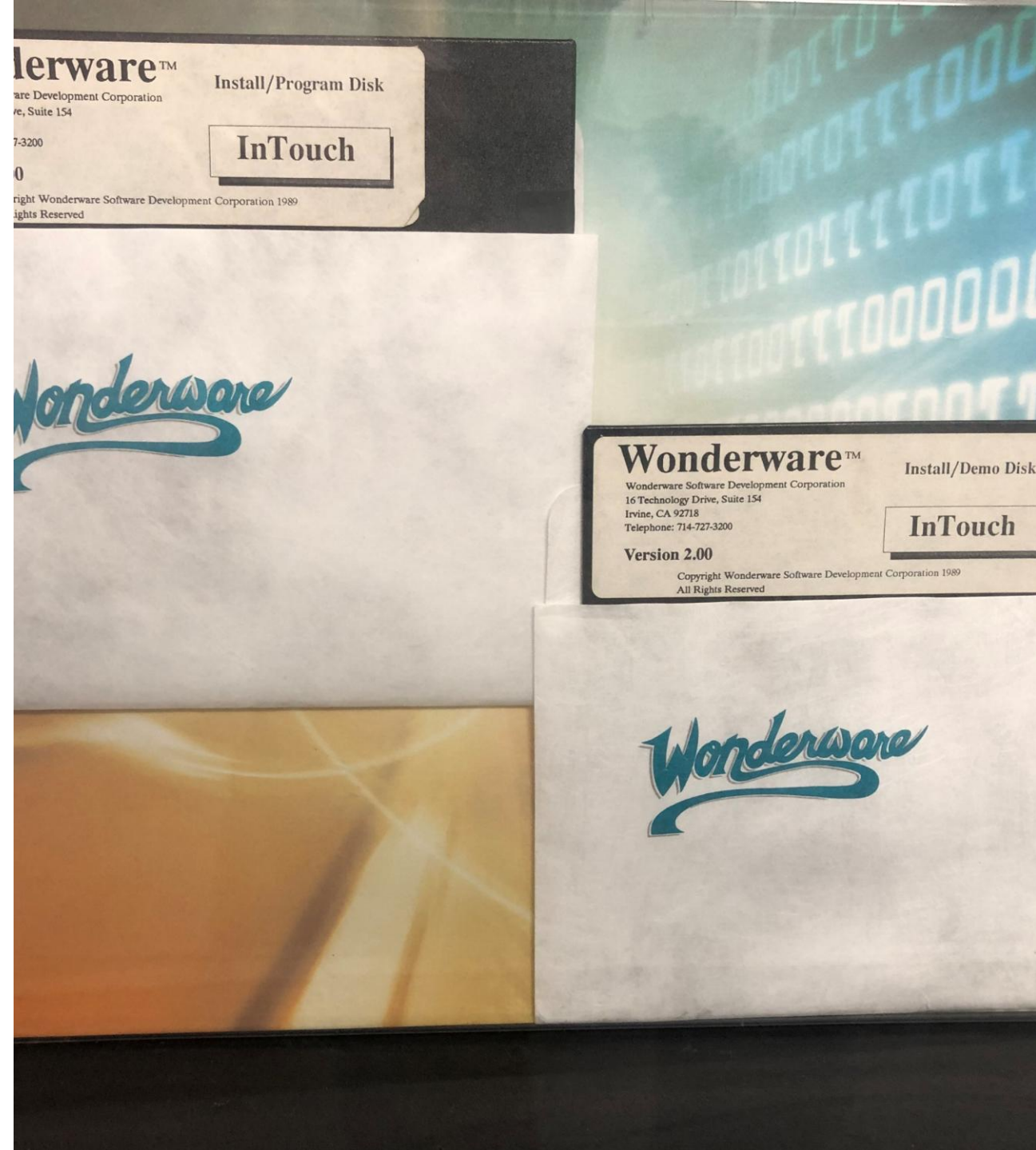
Acquisition & installation

While the format has changed over the years, the AVEVA™ InTouch HMI installer has always been rooted in – and constrained by – the notion of a disk

- Floppy disks
- Optical disks
- Virtual disks

Increasingly complex post-install configuration

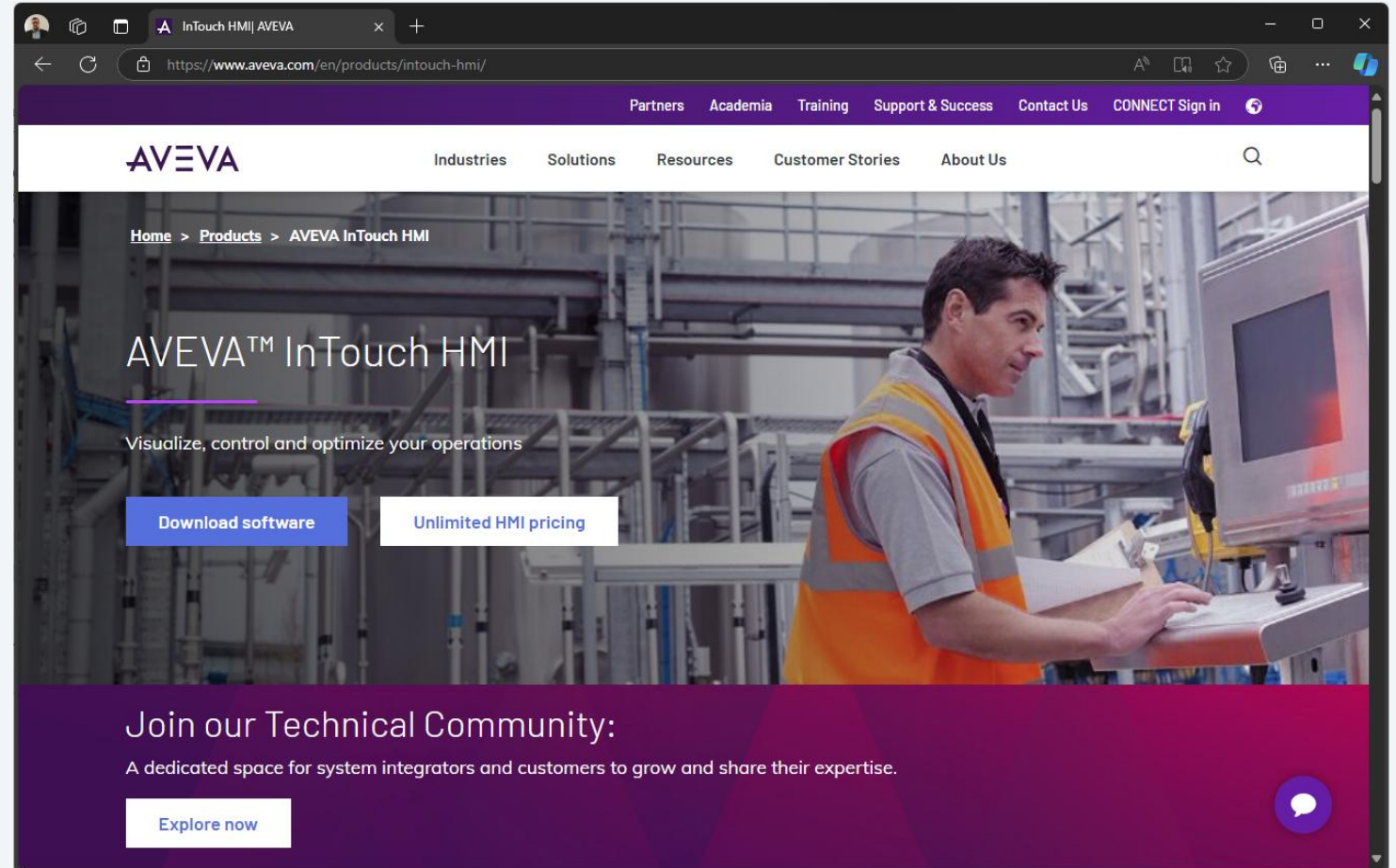
Locked-in behind pay wall



Self-service access to AVEVA™ InTouch HMI via aveva.com

Step 1: Easy Access to AVEVA™ InTouch HMI directly from product page after self-service registration

Available today





VERY EARLY PREVIEW – SUBJECT TO CHANGE

Downloads Documents

Downloads

Search Downloads

New Sort View Details

Name	Date modified	Type	Size
1 item			

Search for apps, settings, and documents

Pinned All >

- Edge
- Microsoft 365 Copilot
- Outlook (new)
- Microsoft Store
- Photos
- Settings
- Xbox
- Solitaire & Casual Games
- Microsoft Clipchamp
- To Do
- LinkedIn
- Calculator
- Clock
- Notepad
- Paint
- Snipping Tool
- File Explorer

Recommended

- AVEVAInstallHub Recently added
- ILSpy Recently added
- AVEVA_desktopbackground_valu... Yesterday at 3:27 PM

Admin



Aspiration

A



Curiosity



Trust



VERY EARLY PREVIEW – SUBJECT TO CHANGE



Aspiration

AVEVA



Trust


Curiosity

AVEVA Install Hub

Available **Installed** Updates

InTouch HMI 20xx

Installs a complete, ready to try InTouch HMI, including development tools, a runtime, sample data source, historization, and alarming.



Launch Optional features ▾ ⋮

Developer News

AVEVA HMI enhancement

[Read Me](#)

Install options ▾ **Customize**

- Recycle Bin
- Microsoft Edge
- AVEVA Install Hub
- InTouch HMI
- Offline Install

Publicly accessible
documentation at
docs.aveva.com

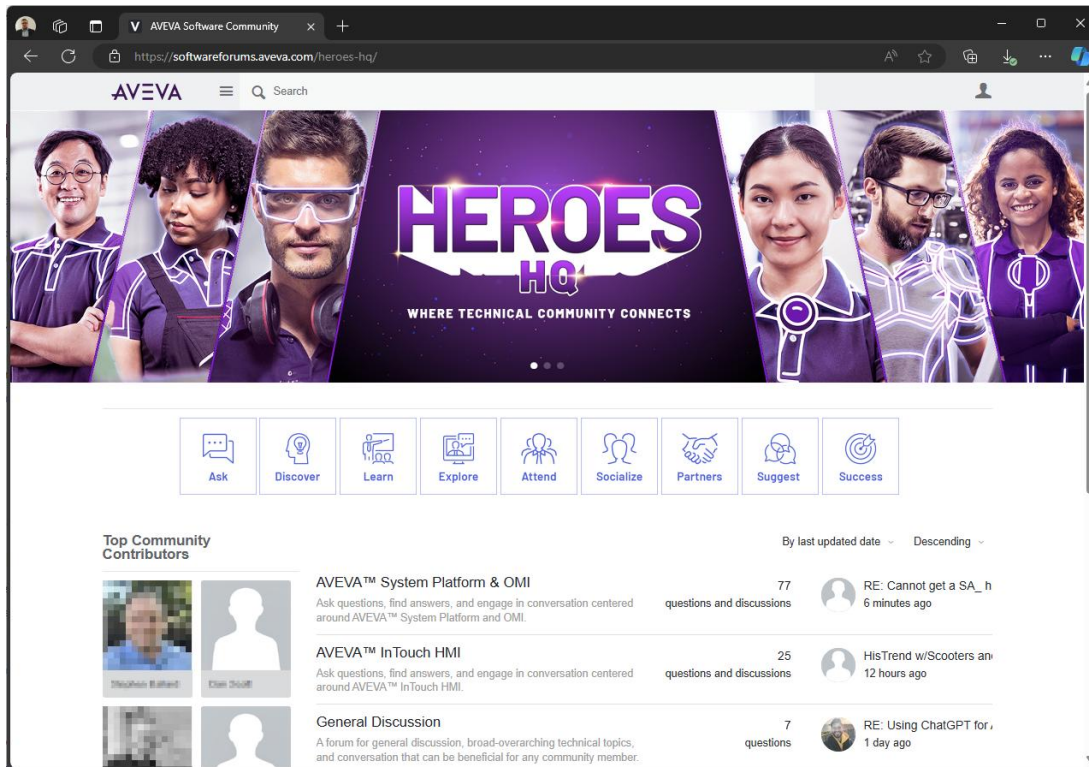
Open access to AVEVA™ InTouch
HMI product documentation

Available today

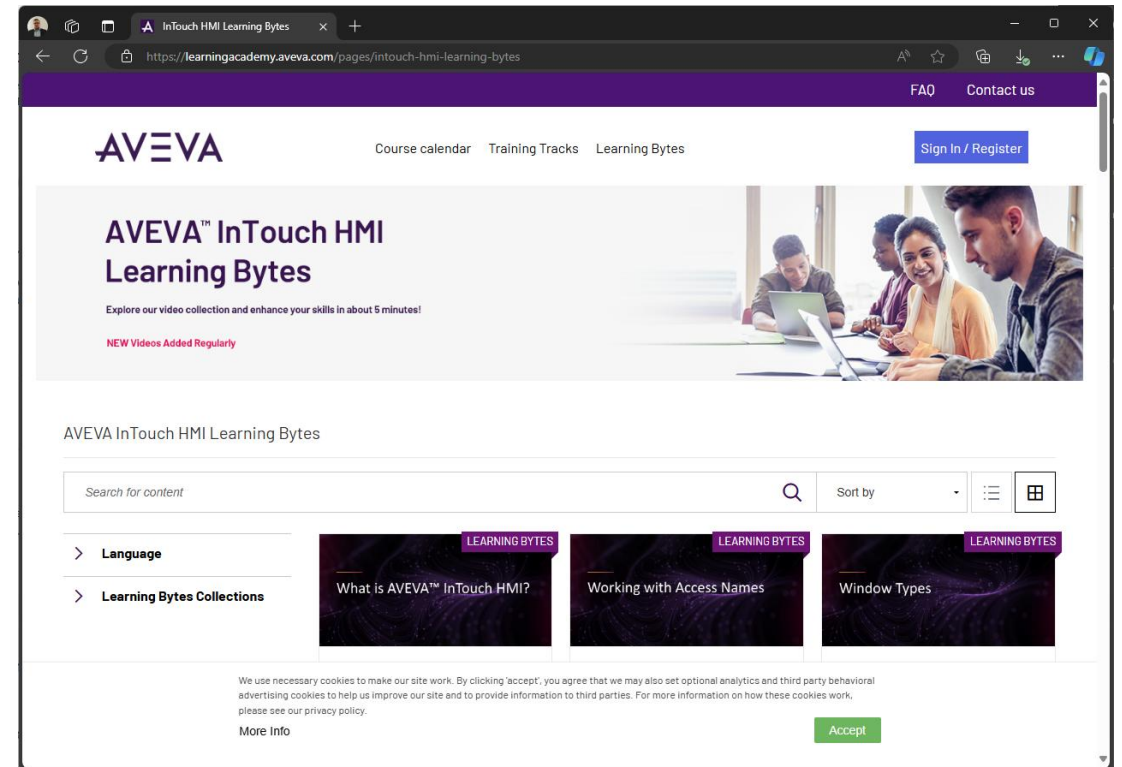
The screenshot shows a web browser displaying the AVEVA InTouch HMI documentation page. The browser address bar shows the URL: <https://docs.aveva.com/bundle/intouch-hmi/page/1389140.html>. The page features the AVEVA logo at the top left and navigation links for Library, More Sites, About, and Login at the top right. A search bar is located below the navigation, with the text "Search Documentation Current publication" and a search icon. The main content area is titled "AVEVA™ InTouch HMI" and includes a "TABLE OF CONTENTS" on the left side. The table of contents lists the following sections: Welcome to AVEVA InTouch HMI (with sub-items: Legal Information, Contact information), Release Notes, Install and upgrade InTouch HMI, Get Started, Design Standards, Build, Deploy, Operate, and Maintain. The main content area displays the title "Welcome to AVEVA InTouch HMI" and the date "Jul 18, 2024". Below the title, there are tags for "HMI and SCADA", "System Platform", and "InTouch HMI 2023 R2 P01". The main content area also includes a list of topics covered in the document, such as "how to prepare the development environment", "creating and managing InTouch HMI applications", and "migrating and upgrading InTouch applications". A "Related Links" section is visible on the right side of the page, listing "Legal Information" and "Contact information".

Need inspiration, or to exchange ideas with peers?

Available today

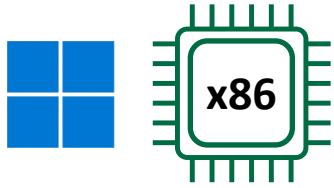


<https://softwareforums.aveva.com/heroes-hq/>

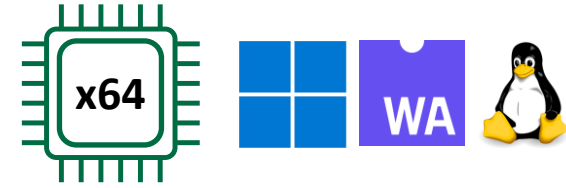


<https://learningacademy.aveva.com/pages/intouch-hmi-learning-bytes>

Architectural changes



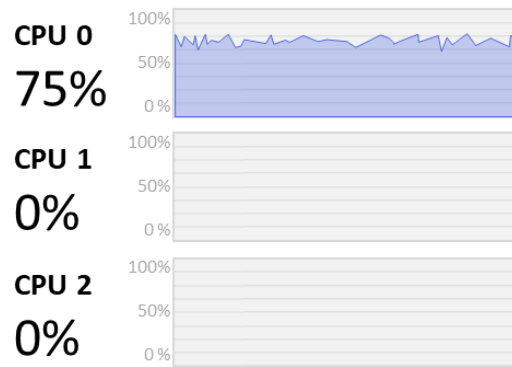
64-bit architecture, platform independence, memory safe



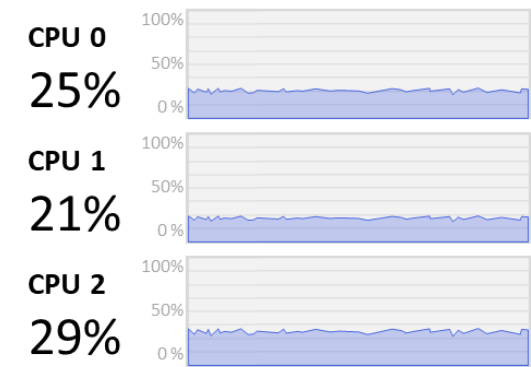
Few base types
Simple or no arrays
131/1024 string length
Poll/Read/Write

Built for the modern data landscape

Rich base types
n-dimensional arrays
2,147,483,647 chars
Pub/sub, Methods

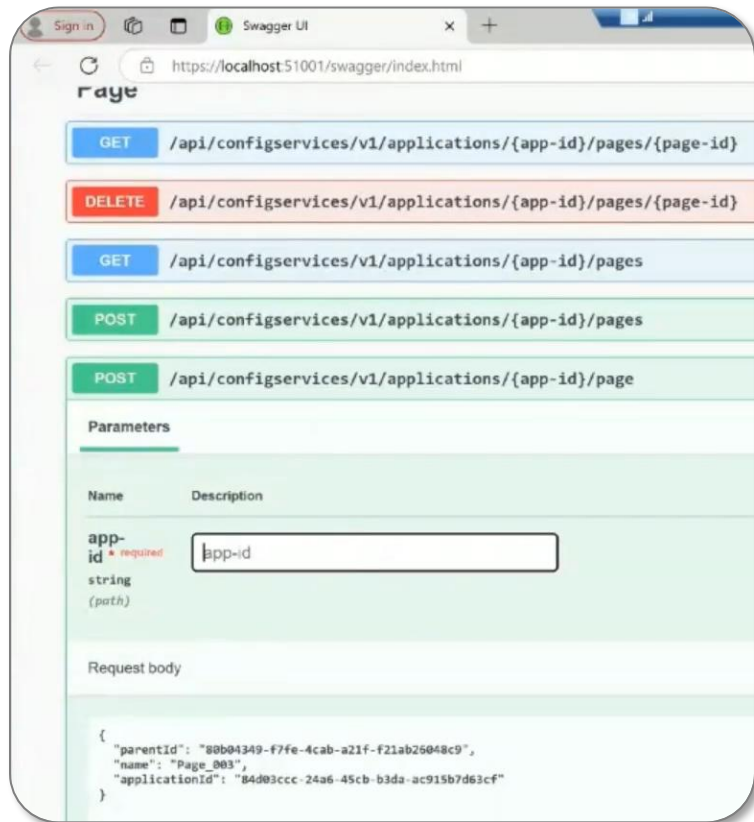


From mostly monolithic to microservices architecture



Openness

API-driven configuration



Interoperability

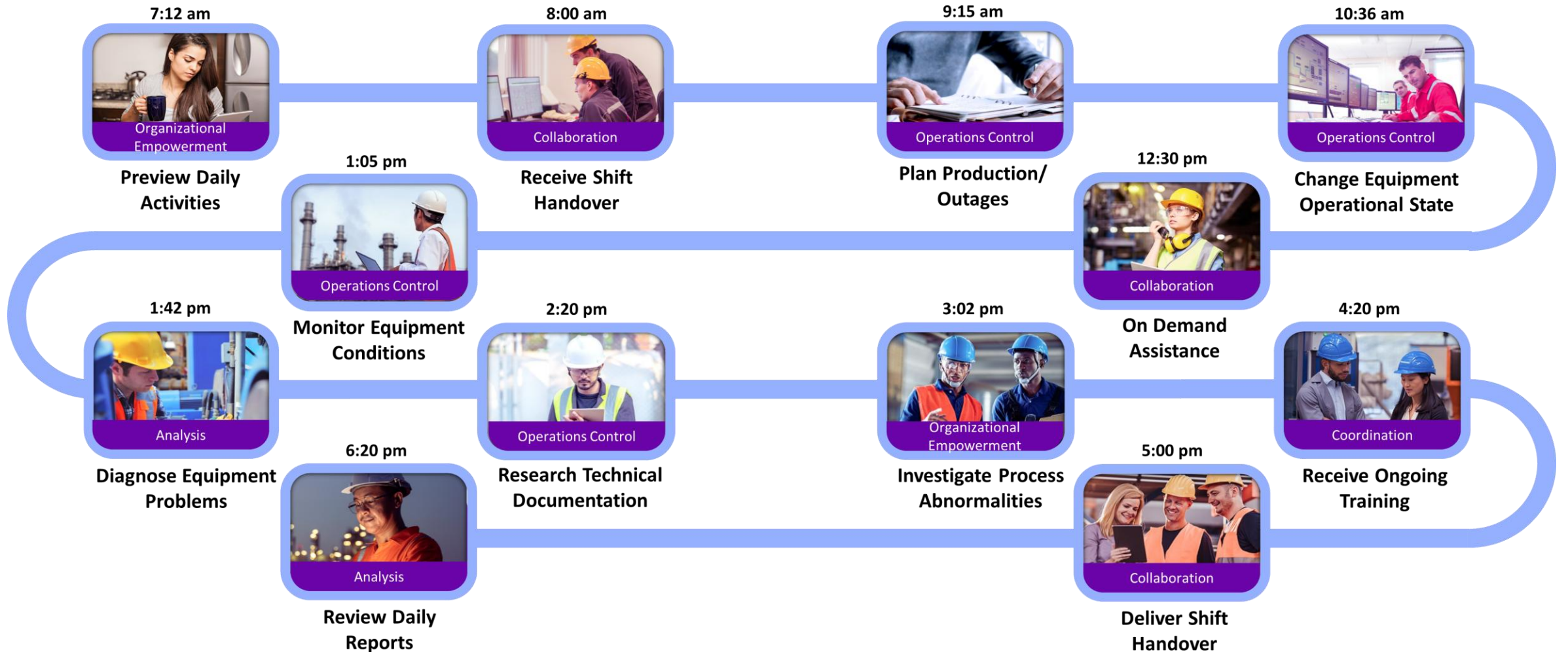


Business Logic & Extensibility

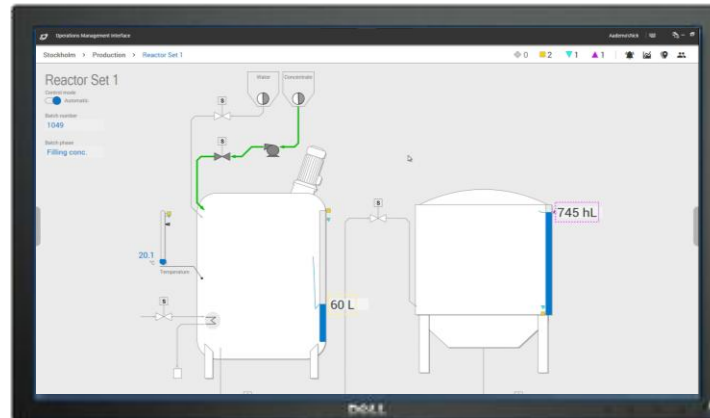


Operations – a day in life

Enabled by AVEVA™ Operations Control – hybrid SaaS solution



Traditional presence at the edge



Expanded presence



Expanded presence

Collaboration thrives with unambiguous and consistently-visualized information

One graphics technology

Rich immersive AVEVA™ Industrial Graphics

- Organized by Layouts

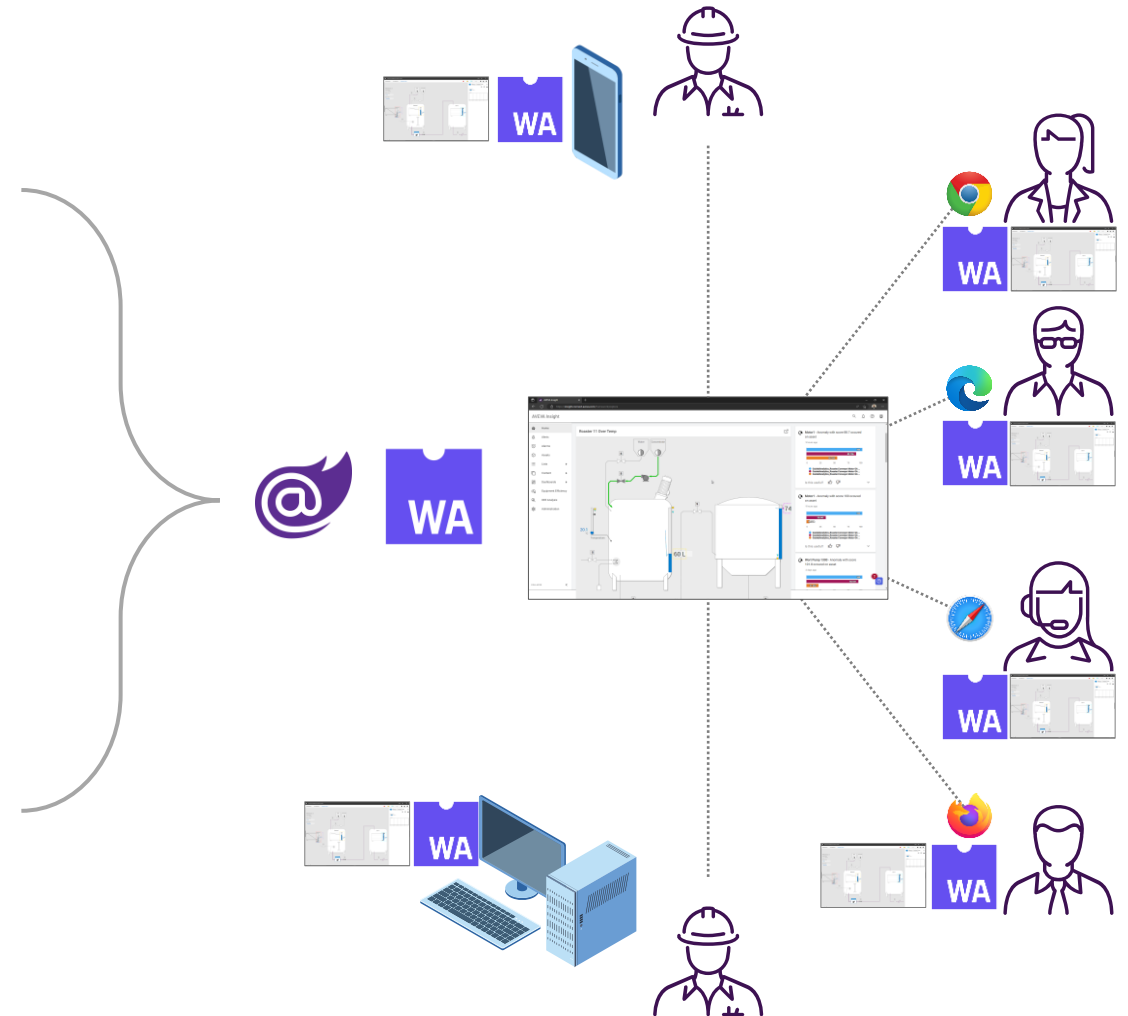
One rendering mechanism

Same code across all devices and form factors means a single graphics features set, pixel-perfect consistency

- Highly performant and scalable client-side application

[Optional] One commercial model

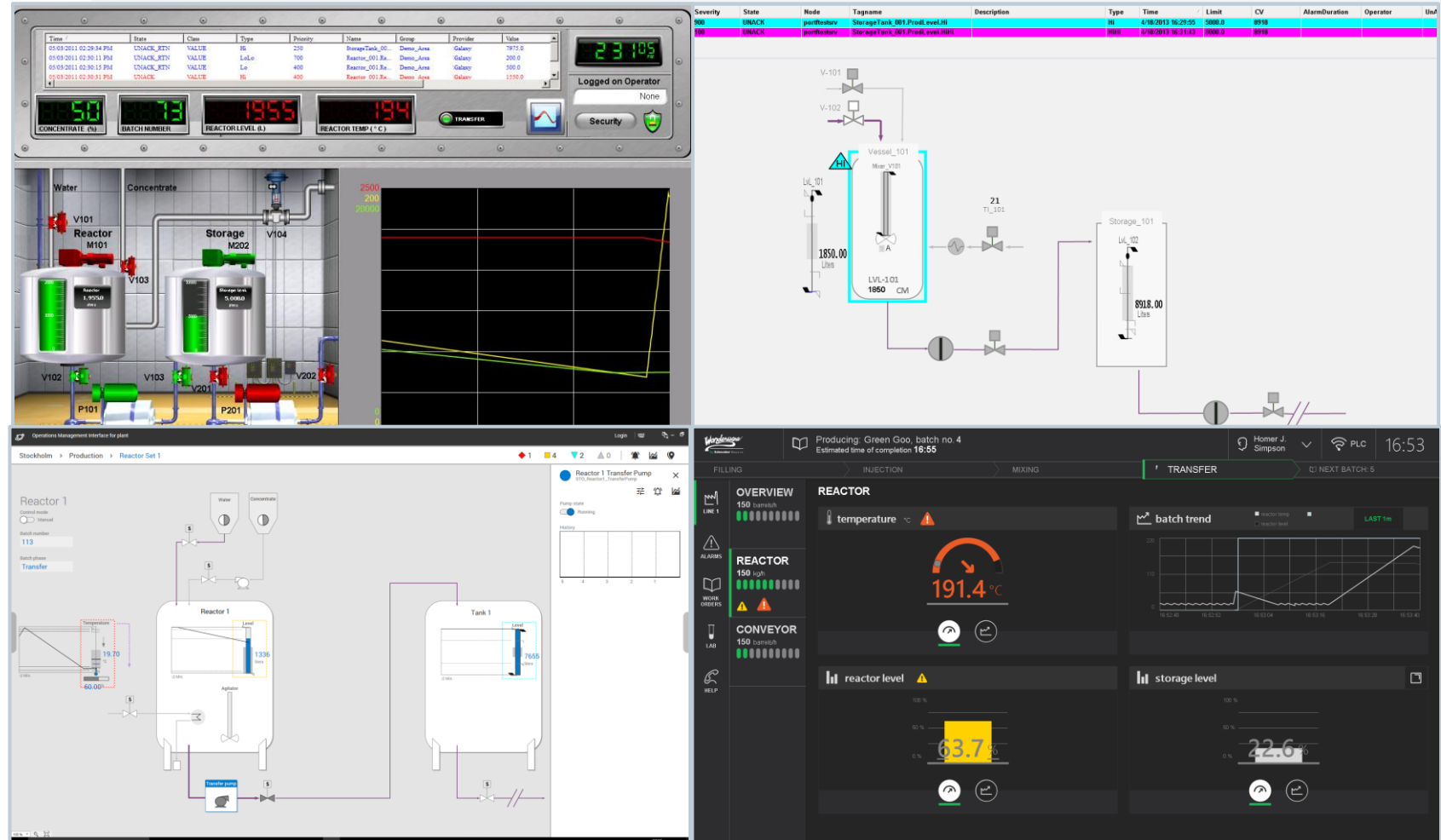
Access unlimited data for unlimited applications through unlimited devices with a single license



Same application – different UX design philosophies

This is the flexibility of AVEVA Industrial Graphics

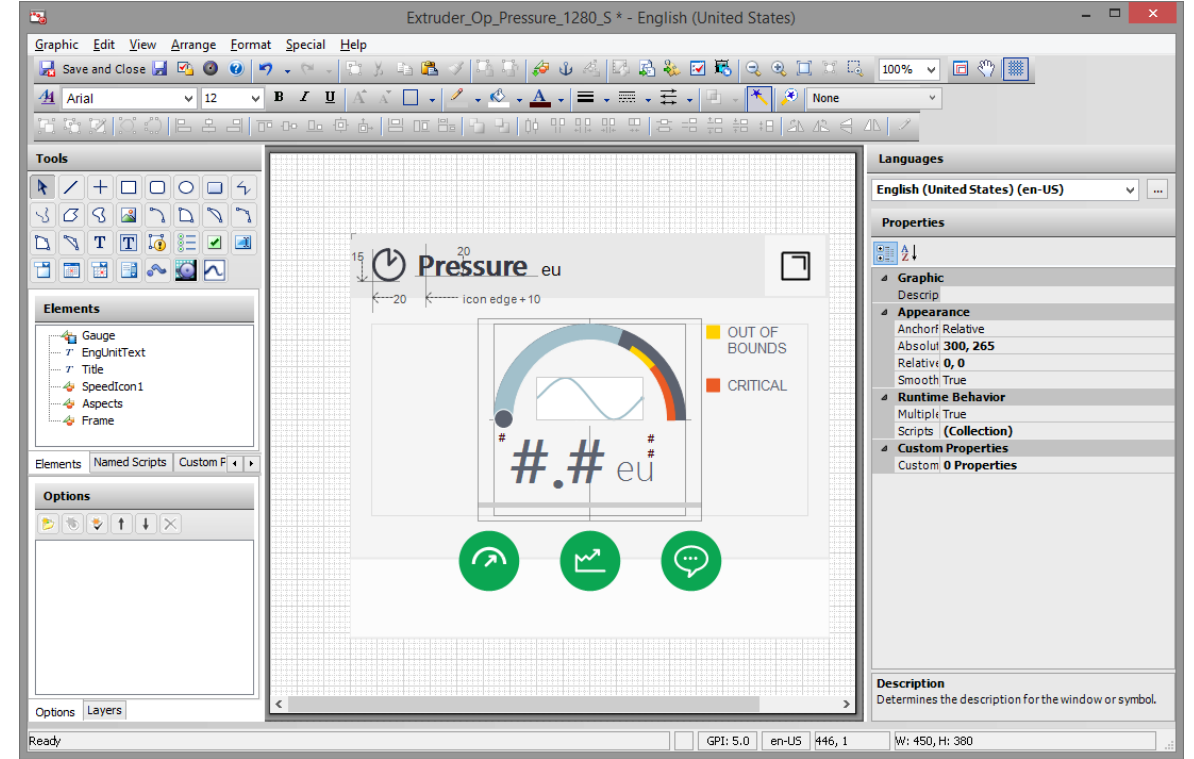
Available today



Designer & developer collaboration

Available today

SVG import



**CANVAS LAYOUTS AND WEB CLIENT
VERY EARLY PREVIEW – SUBJECT TO CHANGE**

Clipboard: Paste, Cut, Copy, Duplicate

Shapes: [Icons]

Insert: [Icons]

Format: Arial, 12, A+, A-, B, I, U, Justify, /, Weight, Ends, Line

Layout: Alignment, Spacing, Sizing

Path: Make, Break

Arrange: Bring to front, Send to back, Rotate

Search

- NewApp_0001
 - Layouts
 - Pages
 - Page_001
 - Page_002

Welcome to your new page!

To get started, provide some data to display. Click "Create new pane" to explore our extensive library and begin creating. Alternatively, click "Learn more" to access the library of demo apps included with your installation.

Learn more Create new pane

Search

- UDT
 - \$System
 - MyViewApp

Search

- NewApp_0001
 - Industrial Graphic Libra...
 - Situational Awareness...
 - SQLGrid
 - Widgets
 - AlarmClient
 - ButtonBase
 - LoggedInUser
 - Menu
 - TrendClient

Industrial Graphics Properties

[Icons] 100%

One visualization technology across all products and services

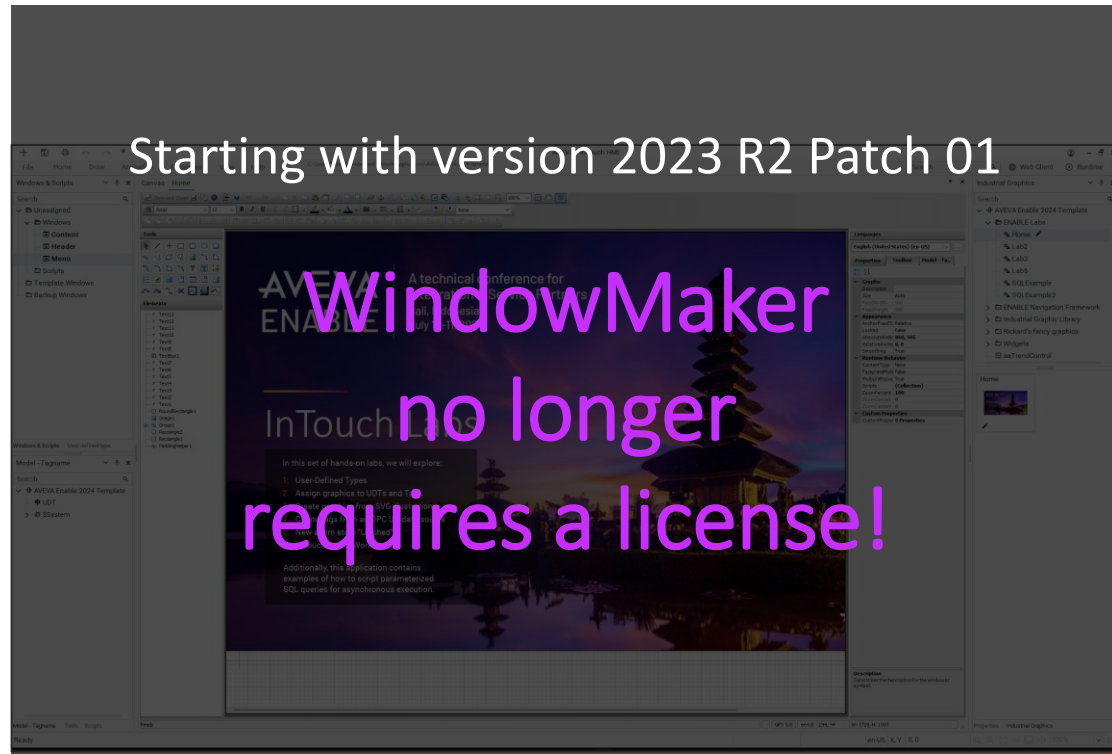
With content portability and pixel-perfect consistency



No license? No problem!

Available today

Development

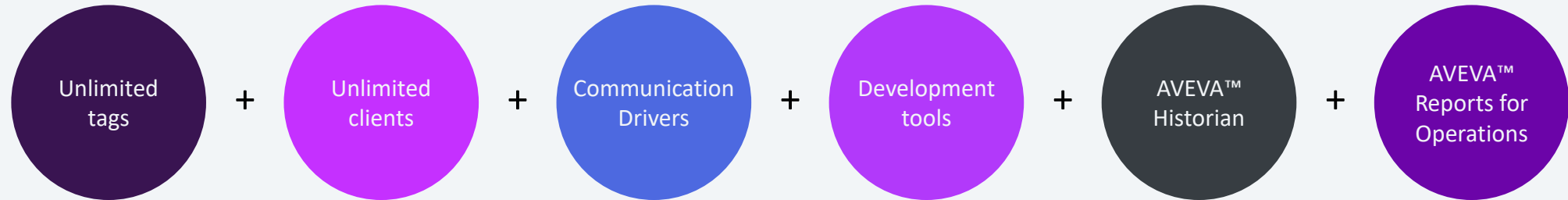


Runtime



AVEVA™ InTouch Unlimited

Available today



InTouch *Unlimited* Standard Perpetual license

Build efficient HMIs, communicate with automation devices and controllers, and log historical process data as well as alarms and events

\$12,000

InTouch *Unlimited* Professional Perpetual license

Scale up to data-intensive applications and manage multi-node deployment. Create and share self-service real-time dashboards. Expose application data through OPC UA Server.

\$20,000

InTouch *Unlimited* Premier Subscription

Pay-as-you-go commercial model. Same feature set as Professional, adding Unlimited Historian.

Contact distributor

From small to unlimited everything

Available today

Features	AVEVA™ Operations Control (subscription only)	AVEVA™ InTouch Unlimited Premier (subscription only)	AVEVA™ InTouch Unlimited Professional (\$20,000)	AVEVA™ InTouch Unlimited Standard (\$12,000)	AVEVA™ InTouch Workstation 1k (\$1,795)
Number of tags	Unlimited	Unlimited	Unlimited	Unlimited	1,000
Number of web clients	Unlimited	Unlimited	Unlimited	Unlimited	1
Number of RDS clients	Unlimited	Unlimited	Unlimited	1	1
Historian Server tags	Unlimited	Unlimited	5,000 tags	500 tags	n/a
Licensed nodes	Unlimited	2	1*	1*	1*
Communication drivers	Professional Edition	Professional Edition	Professional Edition	Standard Edition	Standard Edition
Reports for Operations	Included	Included	Included		
SaaS entitlements (Teamwork, Insight, Dev Studio)	Included				

Big picture roadmap

SUBJECT TO CHANGE AND REPRIORITIZATION

Acceleration

CONNECT-accelerated development and lifecycle management, development assistance through AI/ML, InTouch/Edge unification, continued modernization and expanded open extensibility

Independence

Platform independence, continued CONNECT-accelerated management of lifecycle and software estate

Hybridization

Cloud/edge hybrid solutions

Modernization

Modernized installer, rapid content creation from OPC UA & MQTT sources, workflow enhancements, open scripting, unified visualization





Operations Control Technical Symposium

Day 3, Thurs
April 10th

Unlocking Digital Transformation with Operations Control & UNS

Architecture: 10:00 – 12:15

Dive into a real-world, real-time UNS implementation, exploring key takeaways and use cases from Provelt! 2025

Feedback session: 1:15 – 2:15

Share your thoughts, explore new ideas, and help shape the future of our solutions in a dynamic, engaging setting

Networking & social hour: 2:15 – 3:00

Visit the Heroes HQ booth and celebrate with our raffle prize giveaways along with free drinks and merch!

AVEVA

Questions?



Please wait for the microphone.
State your name and company.

Please remember to...

Navigate to this session in the mobile app to complete the survey.

Visit us at our Operations Control Technical Symposium this Thursday (Day 3)!

Thank you!



This presentation may include predictions, estimates, intentions, beliefs and other statements that are or may be construed as being forward-looking. While these forward-looking statements represent our current judgment on what the future holds, they are subject to risks and uncertainties that could result in actual outcomes differing materially from those projected in these statements. No statement contained herein constitutes a commitment by AVEVA to perform any particular action or to deliver any particular product or product features. Readers are cautioned not to place undue reliance on these forward-looking statements, which reflect our opinions only as of the date of this presentation.

The Company shall not be obliged to disclose any revision to these forward-looking statements to reflect events or circumstances occurring after the date on which they are made or to reflect the occurrence of future events.

 [linkedin.com/company/aveva](https://www.linkedin.com/company/aveva)

 [@avevagroup](https://twitter.com/avevagroup)

ABOUT AVEVA

AVEVA is a world leader in industrial software, providing engineering and operational solutions across multiple industries, including oil and gas, chemical, pharmaceutical, power and utilities, marine, renewables, and food and beverage. Our agnostic and open architecture helps organizations design, build, operate, maintain and optimize the complete lifecycle of complex industrial assets, from production plants and offshore platforms to manufactured consumer goods.

Over 20,000 enterprises in over 100 countries rely on AVEVA to help them deliver life's essentials: safe and reliable energy, food, medicines, infrastructure and more. By connecting people with trusted information and AI-enriched insights, AVEVA enables teams to engineer efficiently and optimize operations, driving growth and sustainability.

Named as one of the world's most innovative companies, AVEVA supports customers with open solutions and the expertise of more than 6,400 employees, 5,000 partners and 5,700 certified developers. The company is headquartered in Cambridge, UK.

Learn more at www.aveva.com