

AVEVAWORLD

OCTOBER 2024

ACCIONA: The Greatest Collaborations

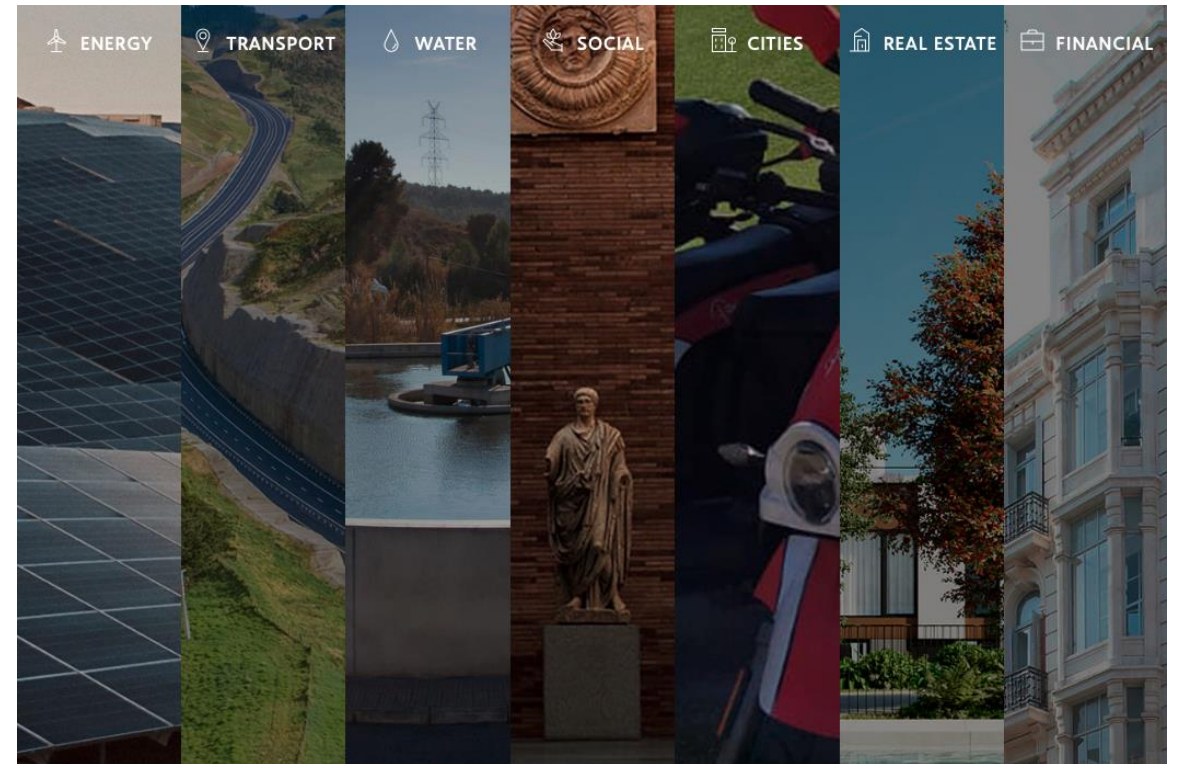
Mariano Martín | Technical Leader and Head of CECO - Water Division, ACCIONA

Guillermo Hijós | O&M Desalination Middle East and Oceania Director, ACCIONA

AVEVA

Who is Acciona?

- We are a global group that develops and manages sustainable infrastructure solutions, especially in renewable energy
- Six years ago, we embarked on a journey towards the digital transformation of Water since it's an essential resource for humanity, which is becoming increasingly scarce
- We use AVEVA's tools to build digital solutions that would help enhance production processes



Who is Acciona?

Our goal: To make a positive contribution to society and to the planet, providing sustainable solutions to the most urgent issues such as global warming and water scarcity.

24,894

GWH Produced in 2023

1,190

HM3 Volume of Water
Treated in 2023

+6,000

Km of Roads Constructed
in more than 25 Countries

950,000

m2 of social infrastructure
over the last 14 years

100%

Of Emissions Offset

13.6

M T CO₂ Emissions avoided
by Renewable Generation

Success collaboration stories

Our approach of working together has made it possible to create the world's largest technology company, for many of us, to be here today.



Collaboration is one of the keys to meeting major challenges

AVEVA



Schneider
Electric

 acciona

AVEVA

OUR CHALLENGES

DESALINATION PLANTS MANAGEMENT



PAS

Sector Problems



Unavailability of qualified personnel with operational knowledge



Lack of a standardized data analysis approach



Increasingly lower/more competitive tariffs with a higher associated risk



Increasingly larger amounts of data manage w/o proper value creation



Large number of different sources generating data



Increasing cybersecurity risks

Reverse osmosis

PAS

Developed Solution



Expert analysis of plant operation and maintenance



Standardize industry KPIs on real time and automatize reporting



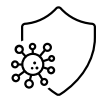
Assist the decision-making process ensuring plant optimal' s performance maximizing asset life



Maximize value generation from available data



Unifying facilities data sources on a single data base

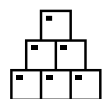


Provides a cyber-secure tool for data analysis

Reverse osmosis

PAS

What else is PAS?



PI System-based software that gathers whole OT systems data



Assist in the troubleshooting process



Facilitates Compliance and handover process providing a structured data base



Available in-premise and in cloud



Standardized data model that allows customization of the product and performance in real time de-coupled from data generating sources

Reverse osmosis

PAS

Other Market opportunities



Easy development for other water business areas- increased market potential



Allows integration with AI Solution for an added value



Limited or inexistent competition with a comparable tool

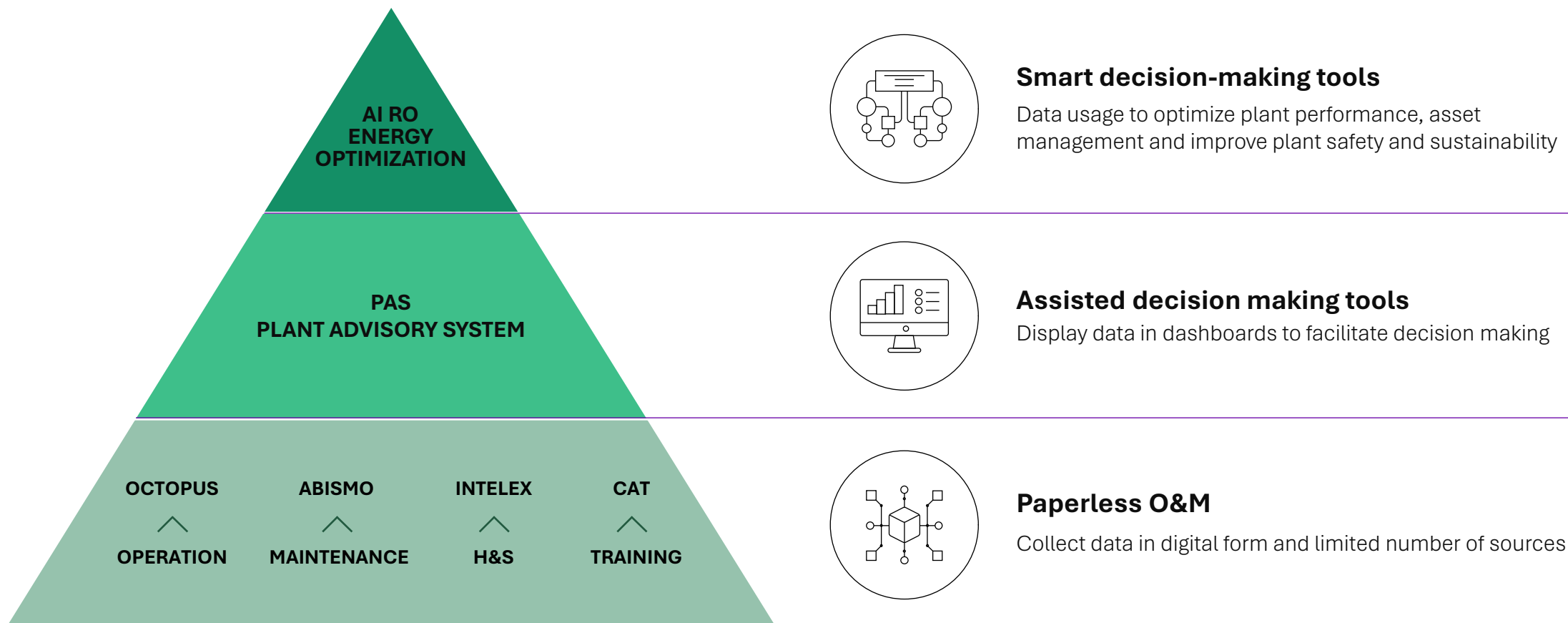


Better understanding of market needs

Water Sector






PAS

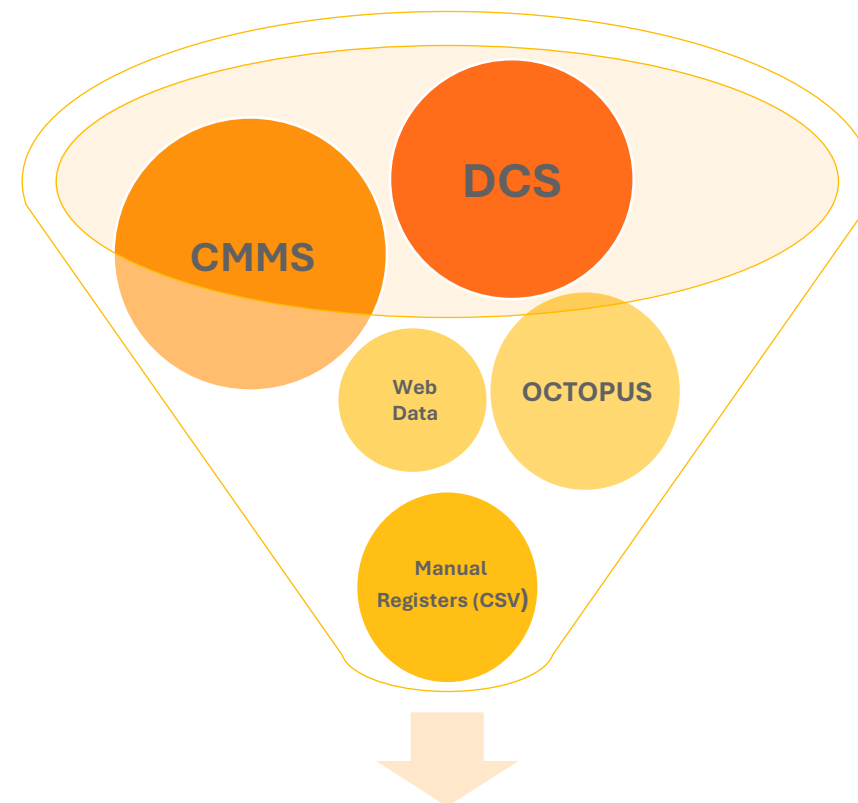
Integration on Acciona's Digitalization Strategy



PAS

Data Resourcing

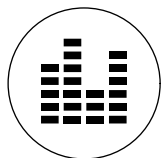
| | |
|--|--|
|  | DCS operational data – OPC UA Connection |
|  | CMMS – API Connection |
|  | COMS – API Connection |
|  | Web data – PI Web API |
|  | Other O&M Registers – CSV / PI Adapters / PI web API |



Plan Management System

PAS

PAS Structure



General Management

Energy Consumption
Chemical Consumption
Water Availability and Quality



Operations Control

Systems Performance Analysis
Pumping Systems Monitoring
Process Mass Balance



Maintenance Control

Assets Performance
Maintenance KPIs
Inventory registers

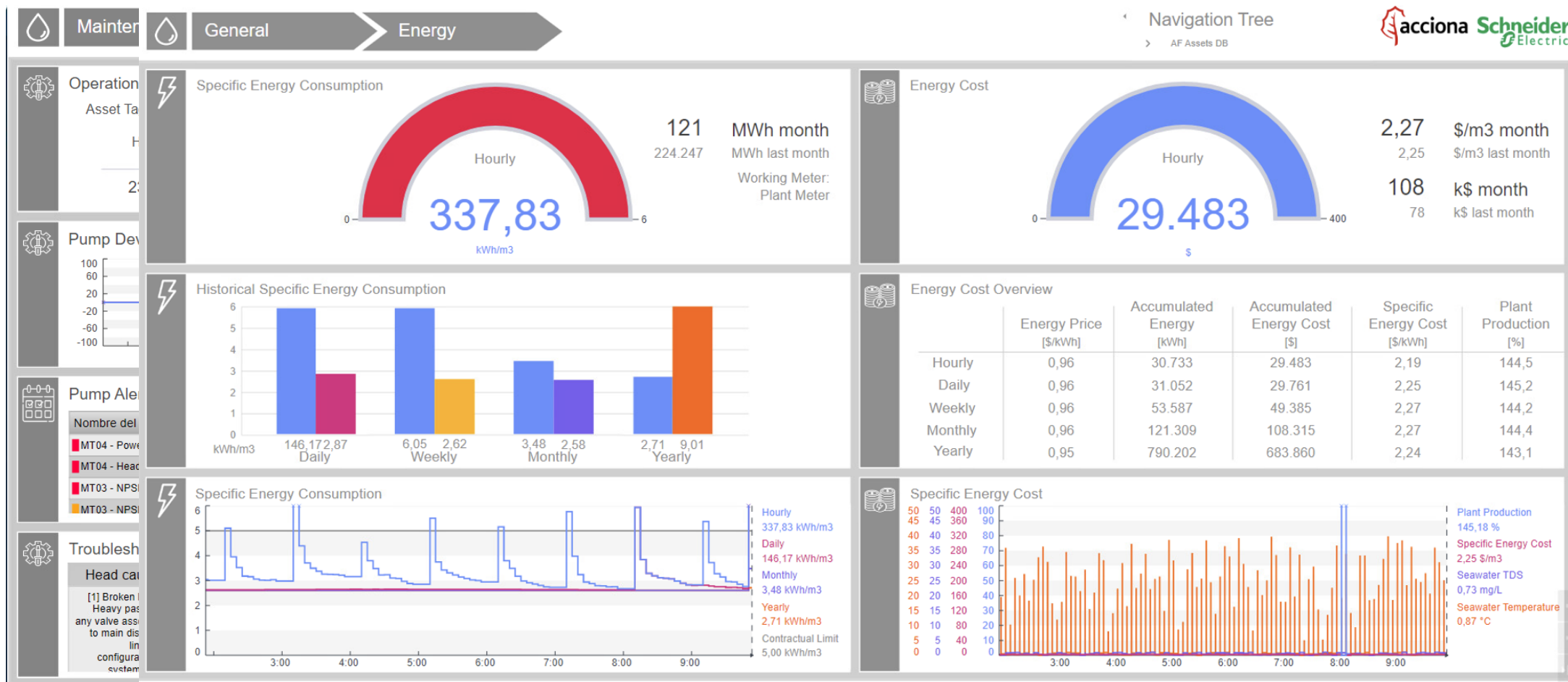
Progressive levels allows
a transition from an
**overview to a detailed
analysis**

General overviews and
KPIs for company's
management

Depth Systems analysis,
ensuring precise, real-time
control of plant O&M
technical team

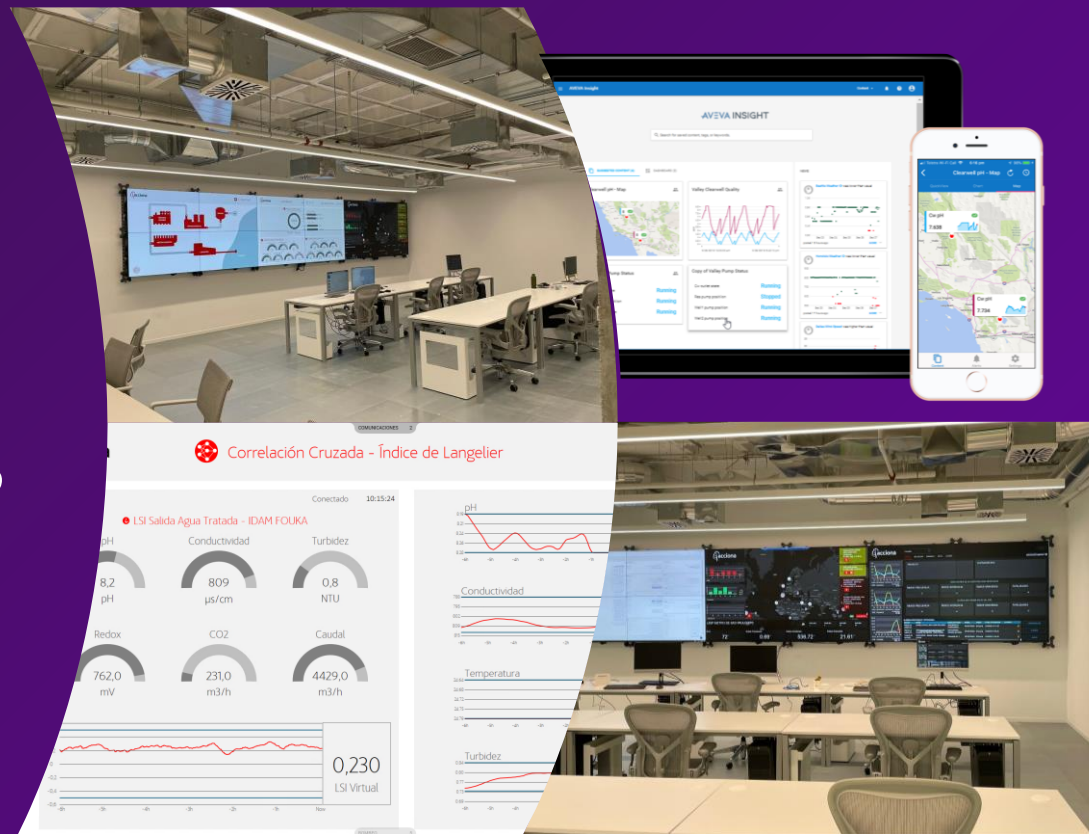
PAS

Look and feel



OUR CHALLENGES

Insight to CONNECT data services migration



CECOA – AVEVA™ Insight

What is AVEVA Insight?

AVEVA Insight gives us easy access to your industrial information in the cloud. From anywhere, at any time.

You can...

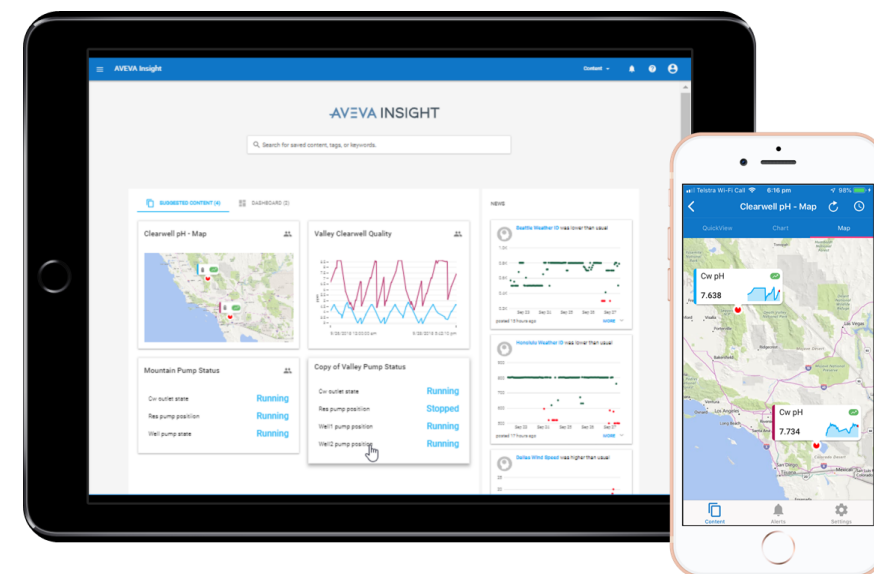
- Connect easily to production data in real time.
- Have plant KPIs and visibility into what is happening.
- Compare between assets or plants.

What did we do with it?

- We have created KPIs to display the most relevant information for each plant to O&M team.
- We have shared our information with our clients to be more transparent in the execution of our contracts.

What did we achieve with it?

- Increased efficiency in our O&M teams thanks to having information available immediately.
- Increased confidence from our clients in our operations.



CECOA – CONNECT data services

Redesigned. Reengineered, Re-everythinged

CONNECT data services is the logical next step – offering AVEVA Insight-like functionality plus so much more.

Although Insight will continue to operate, the AVEVA roadmap for CONNECT data services is more extensive and fast.

For that reason, Acciona has decided to migrate all data, visualization dashboards and mathematical models, that are currently hosted on Insight, to CONNECT data services.

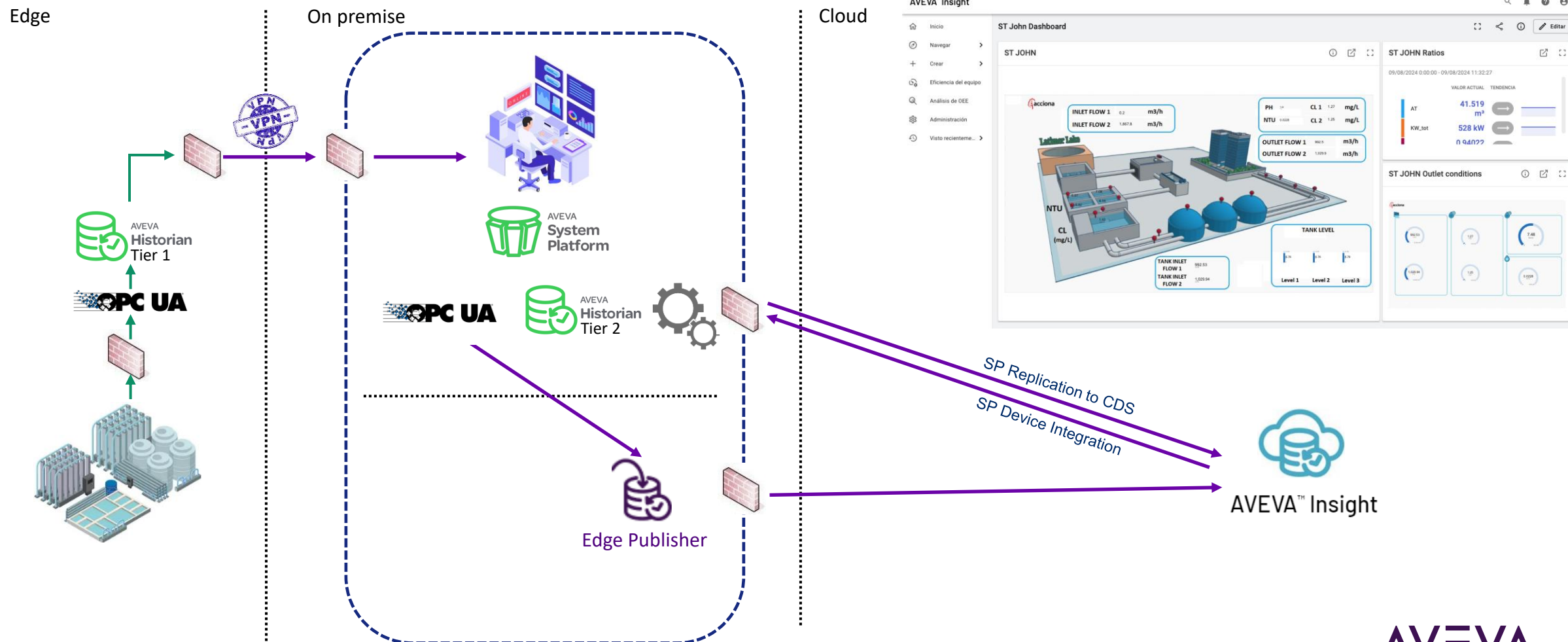
The new features of this platform, such as the possibility of using Industrial Graphics in the dashboards created for the visualization environment, or the better integration with Advanced Analytics, encouraged us to embark on this path in collaboration with the AVEVA team: the migration of our industrial solution to the cloud.

A year and a half ago, AVEVA contacted us to offer their help in the tasks necessary to change to the new environment. They created for us a Lighthouse project adapted to our needs, where we would work side by side to achieve our goal.



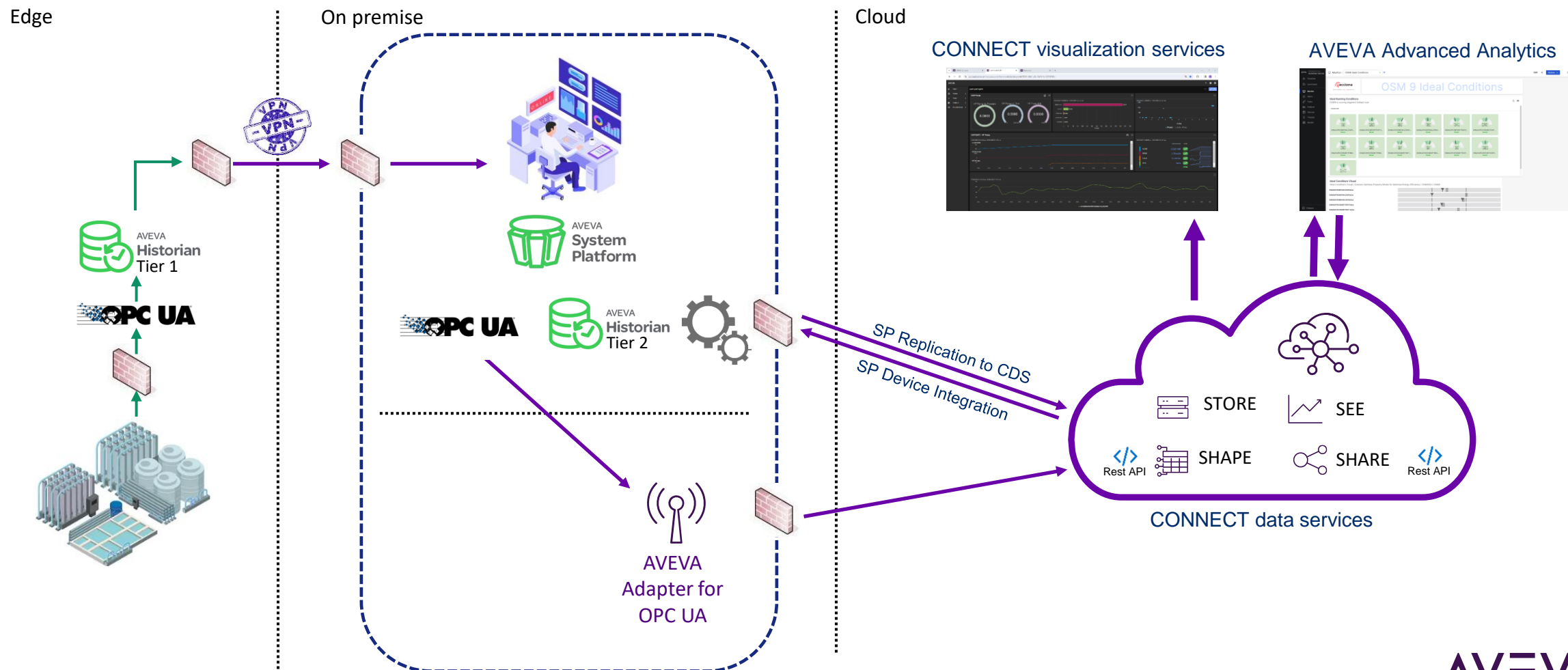
Lighthouse Project

The present architecture



Lighthouse Project

The new architecture



AVEVA Lighthouse Program

The value of engagement



AVEVA's Lighthouse program guided Acciona along the journey to CONNECT

- Providing insight to and trust in newly available CONNECT capabilities
- Migrating Insight advanced analytics models to CONNECT advanced analytics
- Helping create new CONNECT visualization services dashboards
- Guiding Acciona through all steps
(e.g. data migration, add new OPC UA data, updated user management, answer cyber security questions, etc)



Great customer – vendor collaboration

- Joint Acciona, Schneider Electric and AVEVA team collaboration resulted in deployment of a solid platform ready for the future
- Acciona provided rich and honest product feedback to help improve product quality



Acciona's alliance with Schneider and AVEVA creates new digital solutions for water

Challenge

- Digitalization improves the management and maintenance of water infrastructures. But there are not many market solutions that meet the needs of this sector. The management of large desalination plants is a complicated job that requires analyzing multiple data sources to make the right decisions at the right time. Sharing the KPIs of our plants with our O&M teams, as well as our customers, is key to the continuous improvement of our processes and to maintaining the reliability of our customers.

Solution

- Acciona, Schneider and AVEVA have joined forces to create the world's first decision support software for desalination plants and improve information sharing with CONNECT.

Results

- Expected 2-5% reduction on OPEX costs
- Higher levels of availability and asset life
- Less personnel required and less qualified
- Standardization of reporting and analytical tools



Guillermo Hijós

O&M Desalination Middle East and Oceania Director

- Acciona
- guillermo.hijos@acciona.com

Mariano Martin

Technical Leader and Head of CECO A

- Acciona
- mamartint@acciona.com

Questions?

Please wait for the microphone.
State your name and company.



Please remember to...

Navigate to this session in the mobile app to complete the survey.



Thank you!

This presentation may include predictions, estimates, intentions, beliefs and other statements that are or may be construed as being forward-looking. While these forward-looking statements represent our current judgment on what the future holds, they are subject to risks and uncertainties that could result in actual outcomes differing materially from those projected in these statements. No statement contained herein constitutes a commitment by AVEVA to perform any particular action or to deliver any particular product or product features. Readers are cautioned not to place undue reliance on these forward-looking statements, which reflect our opinions only as of the date of this presentation.

The Company shall not be obliged to disclose any revision to these forward-looking statements to reflect events or circumstances occurring after the date on which they are made or to reflect the occurrence of future events.

 [linkedin.com/company/aveva](https://www.linkedin.com/company/aveva)

 [@avevagroup](https://twitter.com/avevagroup)

ABOUT AVEVA

AVEVA is a world leader in industrial software, providing engineering and operational solutions across multiple industries, including oil and gas, chemical, pharmaceutical, power and utilities, marine, renewables, and food and beverage. Our agnostic and open architecture helps organizations design, build, operate, maintain and optimize the complete lifecycle of complex industrial assets, from production plants and offshore platforms to manufactured consumer goods.

Over 20,000 enterprises in over 100 countries rely on AVEVA to help them deliver life's essentials: safe and reliable energy, food, medicines, infrastructure and more. By connecting people with trusted information and AI-enriched insights, AVEVA enables teams to engineer efficiently and optimize operations, driving growth and sustainability.

Named as one of the world's most innovative companies, AVEVA supports customers with open solutions and the expertise of more than 6,400 employees, 5,000 partners and 5,700 certified developers. The company is headquartered in Cambridge, UK.

Learn more at www.aveva.com