

OCTOBER 2024

Transforming to an integrated approach to asset lifecycle management

Chris Cran – Programme Director - ALM

Over 95% of major projects
are delayed or over budget.

Just 31%

come within 10% of cost baselines

Accenture

Only 25%

come within 10% of original deadlines

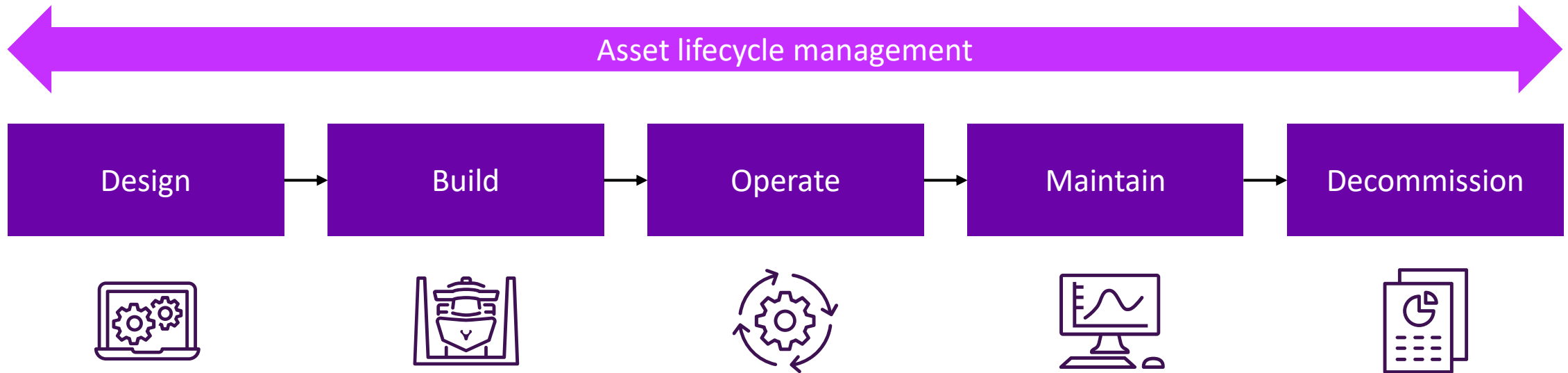


“Complex projects generate huge amounts of data... Management teams need a **better way** to access and interpret all their data.”

McKinsey & Company



A detailed digital thread through the *entire* asset lifecycle



CONNECT

Industrial intelligence for the connected industrial economy

Seamless experience



Applications and analytics



Information



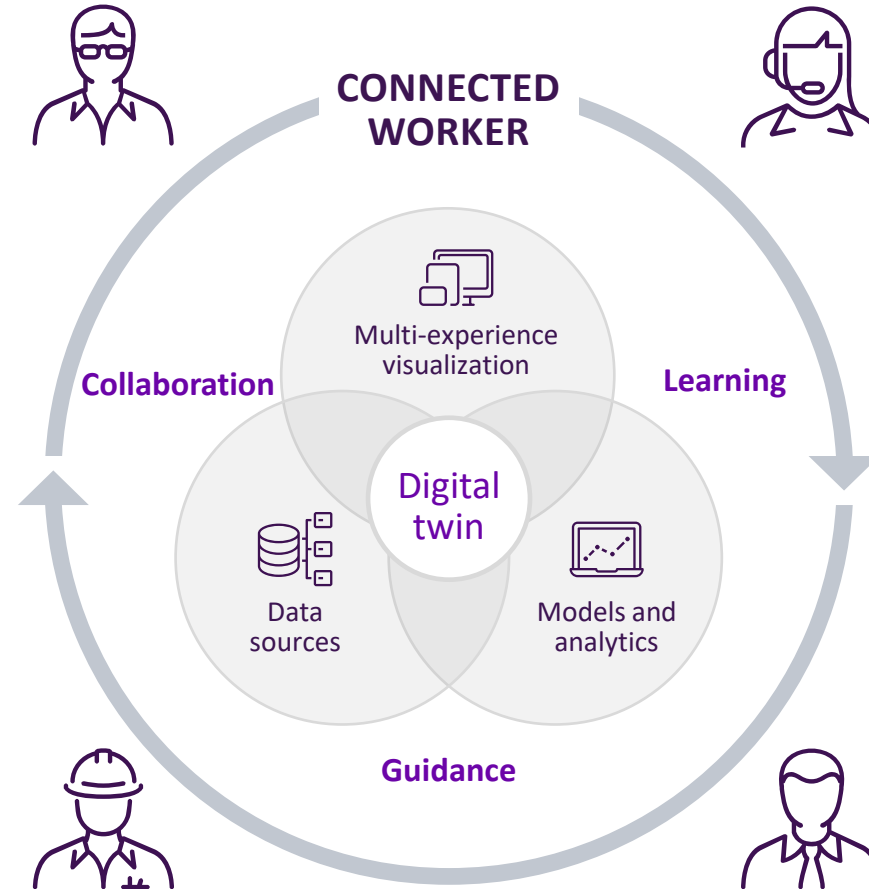
Assets and devices



Ecosystem of developers and partners

To empower the connected worker

With a comprehensive digital twin across engineering and operations

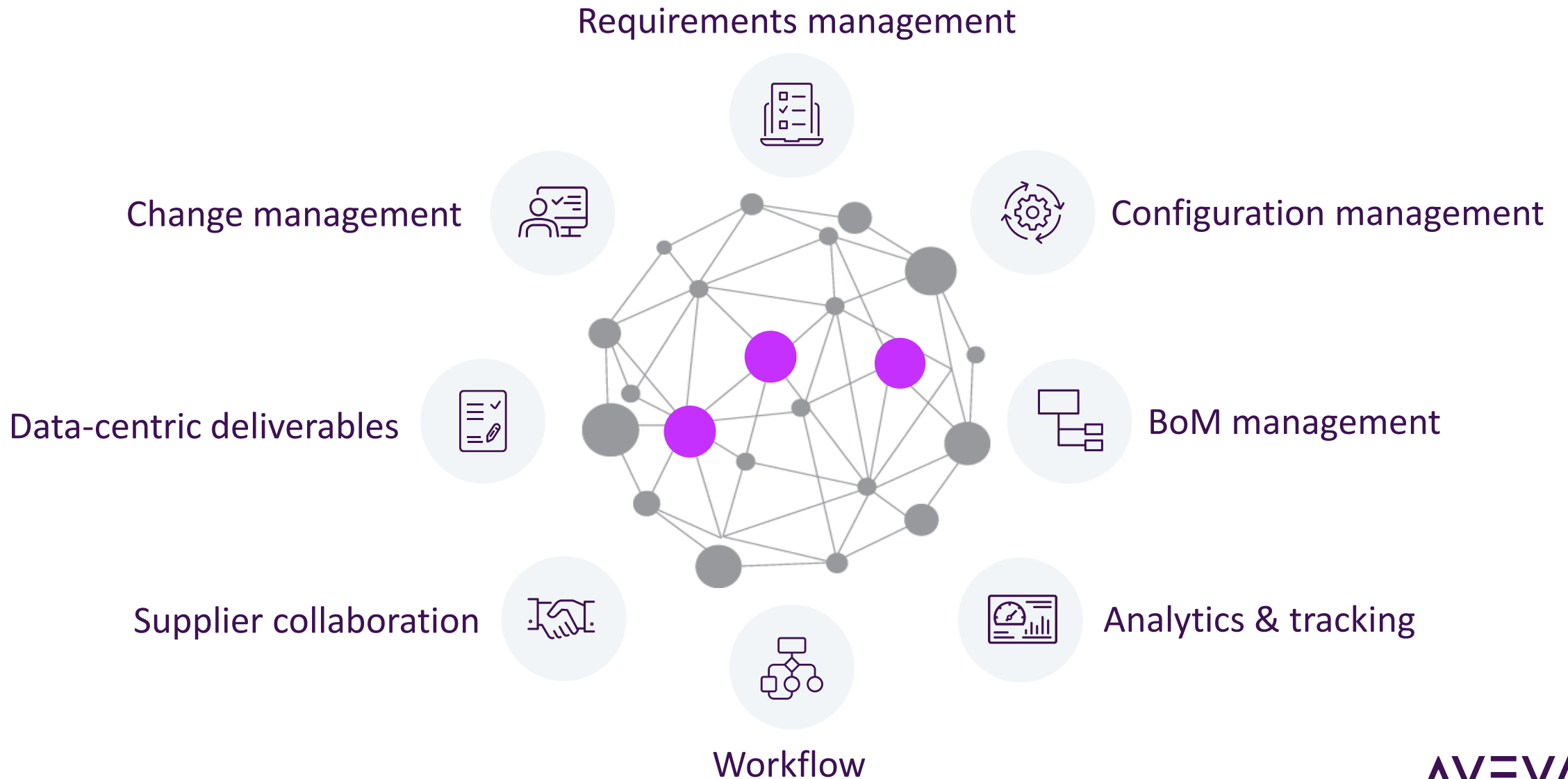


Asset lifecycle management

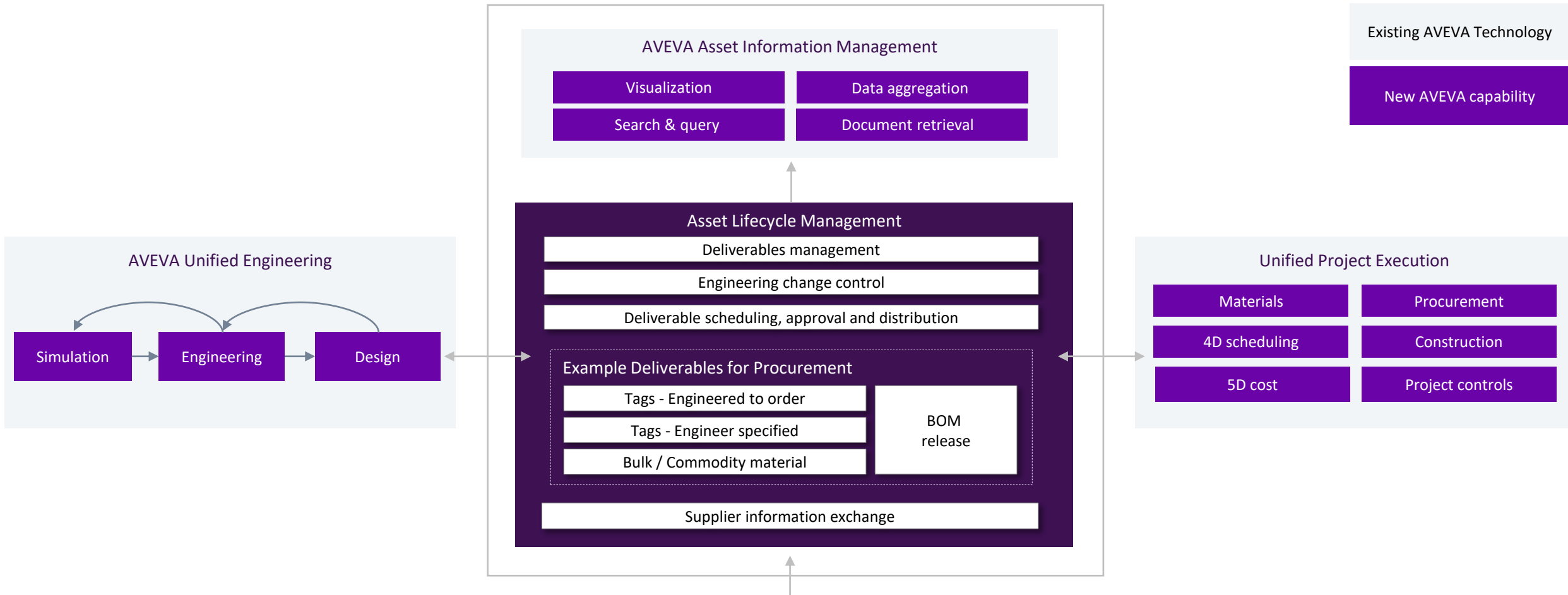




Asset lifecycle management

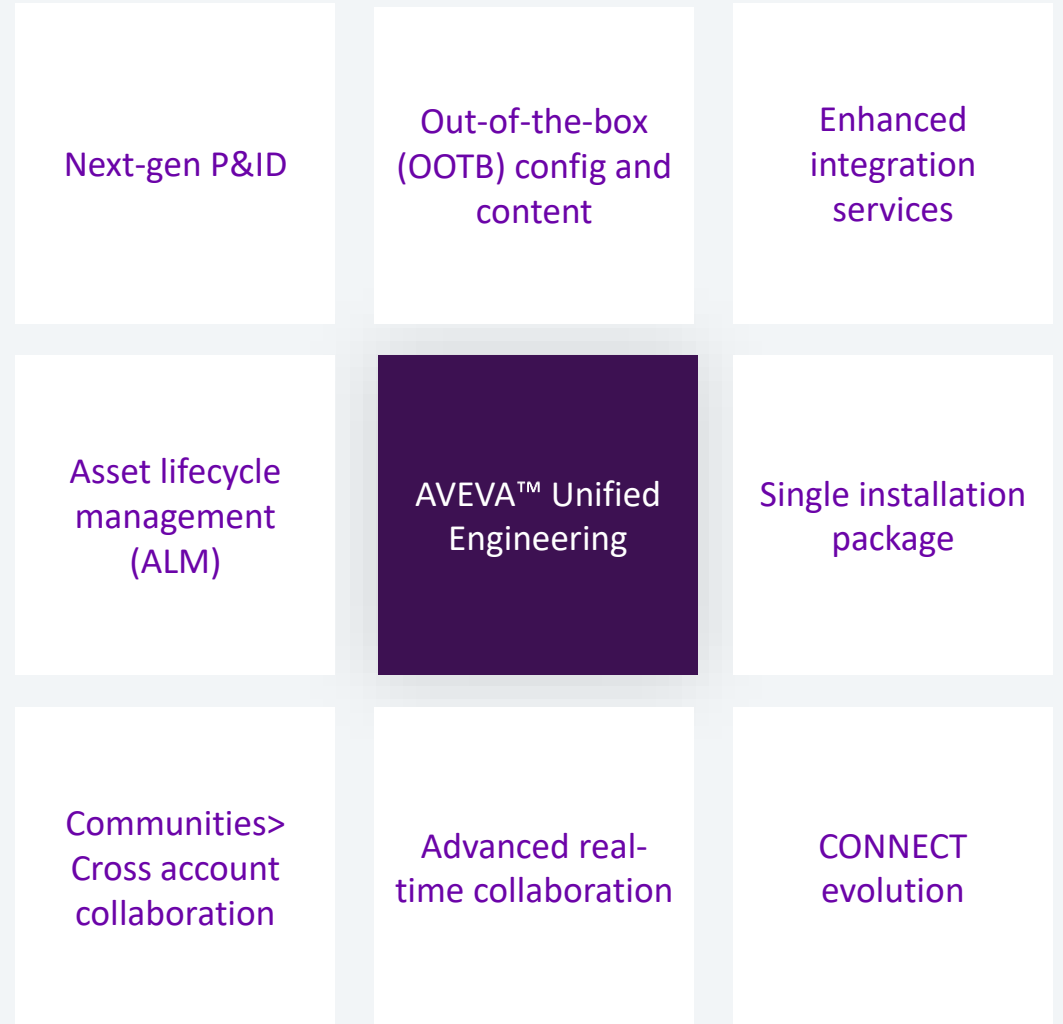


ALML Strategy



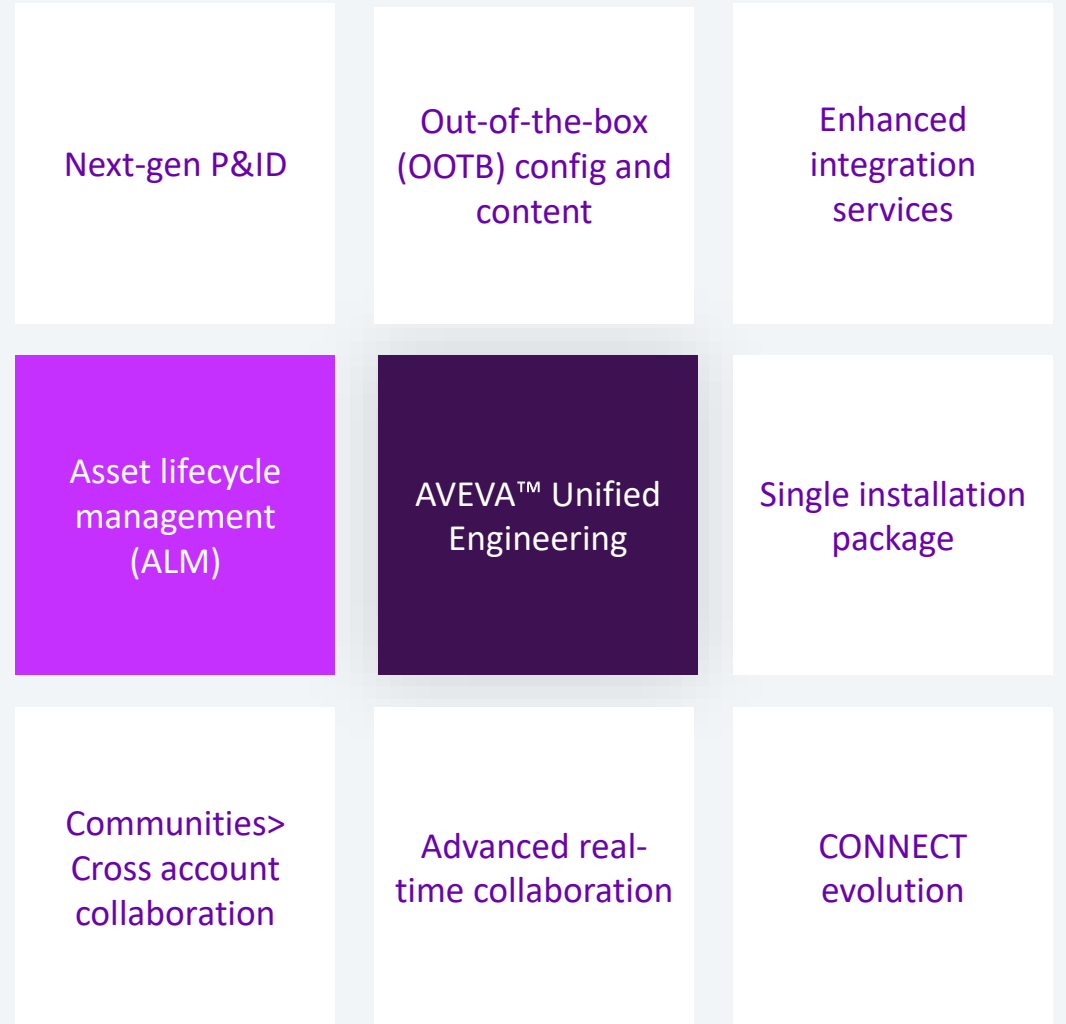
AVEVA™ Unified Engineering

The first release of asset lifecycle management builds on AVEVA's established engineering products to create additional value for our customers



AVEVA™ Unified Engineering

The first release of asset lifecycle management builds on AVEVA's established engineering products to create additional value for our customers



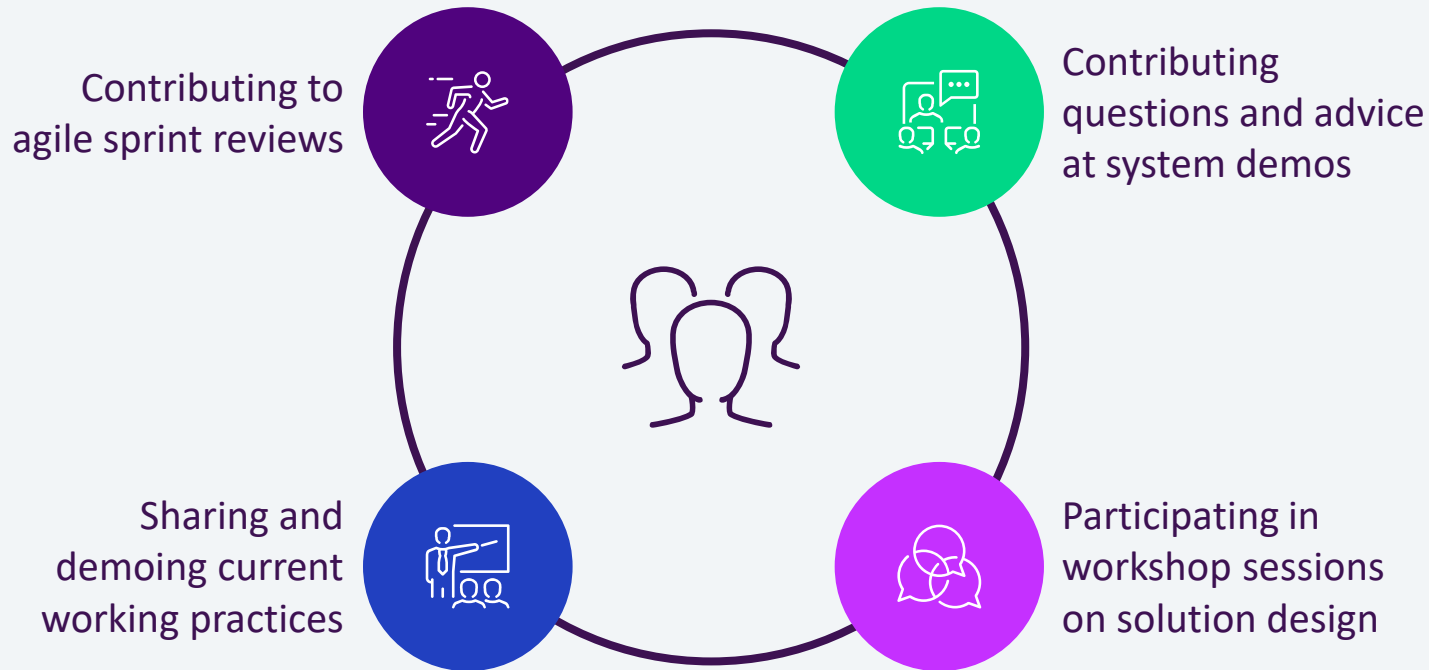
ASSET LIFECYCLE MANAGEMENT

AVEVA™ Deliverables Management

Powered by Aras Innovator

AVEVA

Customer lighthouse program



TotalEnergies

MCDERMOTT

Data-centric deliverables management

Going beyond documents



Objects



Data



Schematics



Documents



Collaboration



Compliance



Quality



Analytics & tracking

AVEVA™ Deliverables Management

Workflow



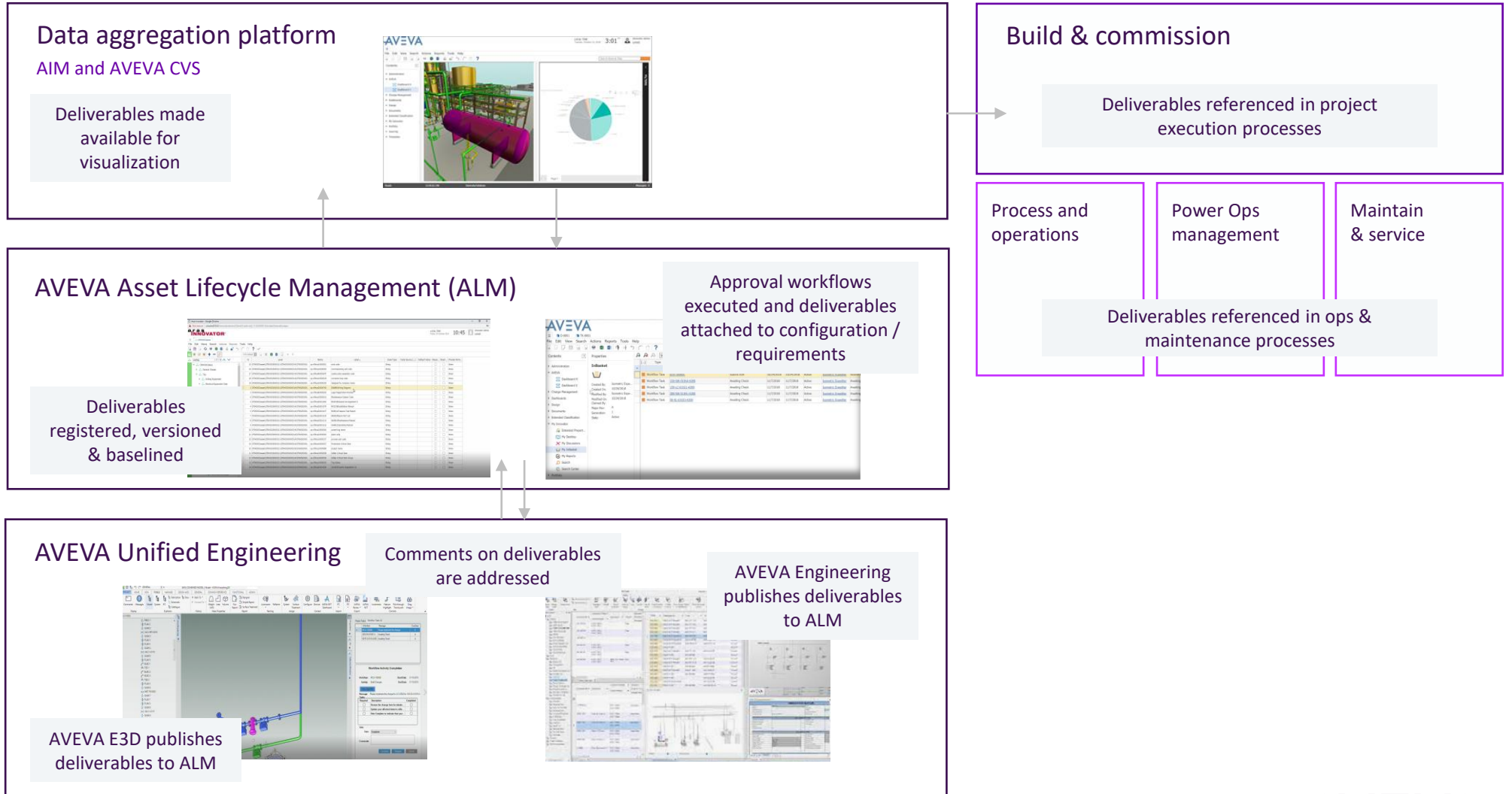
Any Users
View | Decide | Share



Requirements Engineer
/ Program Manager
Analyze | Investigate | Validate



3D Designer
Design | Modify



AVEVA Deliverables Management

Initiating change at the source of the project data

- Capture data-centric project deliverables
- Flexible approval workflows – no need to lock-out a full assembly part number
 - Flexible data model
- Direct access through AVEVA Unified Engineering
 - Integrate with Status Control
- Baseline and version engineering objects, data, schematics and documents

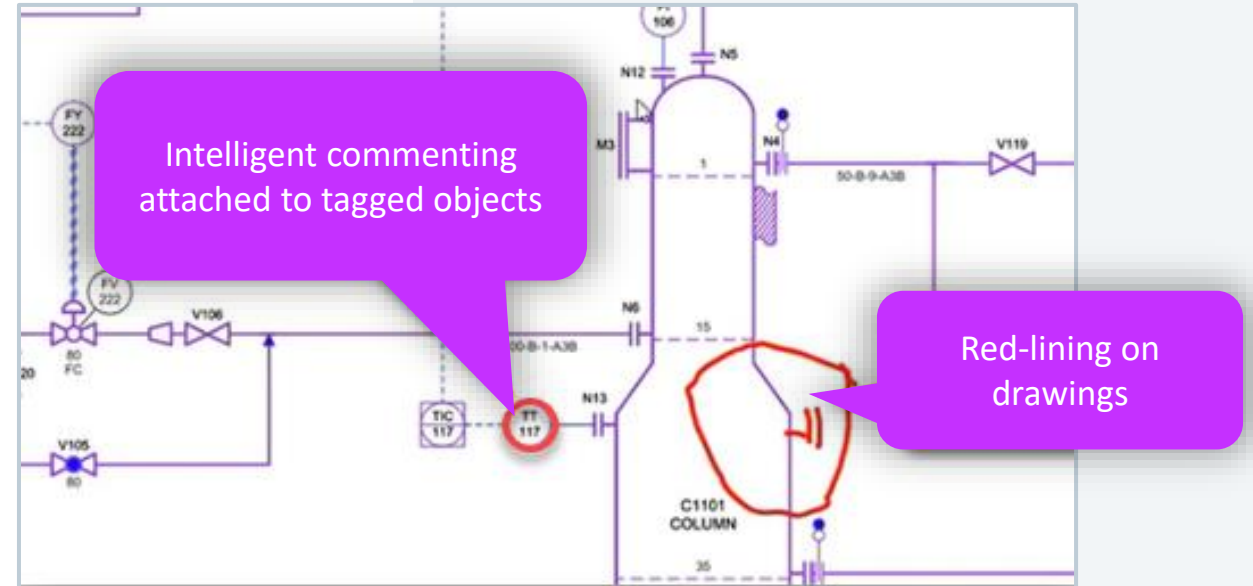
The screenshot displays the 'Tags' section of the AVEVA Deliverables Management interface. The interface includes a left-hand navigation pane with sections for 'Status', 'Action', and 'Other'. The main area shows a table of tags with columns for Tag#, Tag Description, Fill. %, State, Is Used, Installed, Action, and Validated. The tag '20PA001' is highlighted in blue.

Tag#	Tag Description	Fill. %	State	Is Used	Installed	Action	Validated
20BSV1240	2ND STAGE SEPARATOR	73	Checked Out	<input type="checkbox"/>	<input type="checkbox"/>	-- Not Select	<input checked="" type="checkbox"/>
20BSV1340	3RD STAGE SEPARATOR	72	Checked Out	<input type="checkbox"/>	<input type="checkbox"/>	-- Not Select	<input checked="" type="checkbox"/>
20BSV1454	ELECTROSTATIC COALESCER	72	Checked Out	<input type="checkbox"/>	<input type="checkbox"/>	-- Not Select	<input checked="" type="checkbox"/>
20PA001	NEW MANUAL PUMP	12	New	<input checked="" type="checkbox"/>	<input type="checkbox"/>	-- Not Select	<input checked="" type="checkbox"/>

AVEVA Deliverables Management

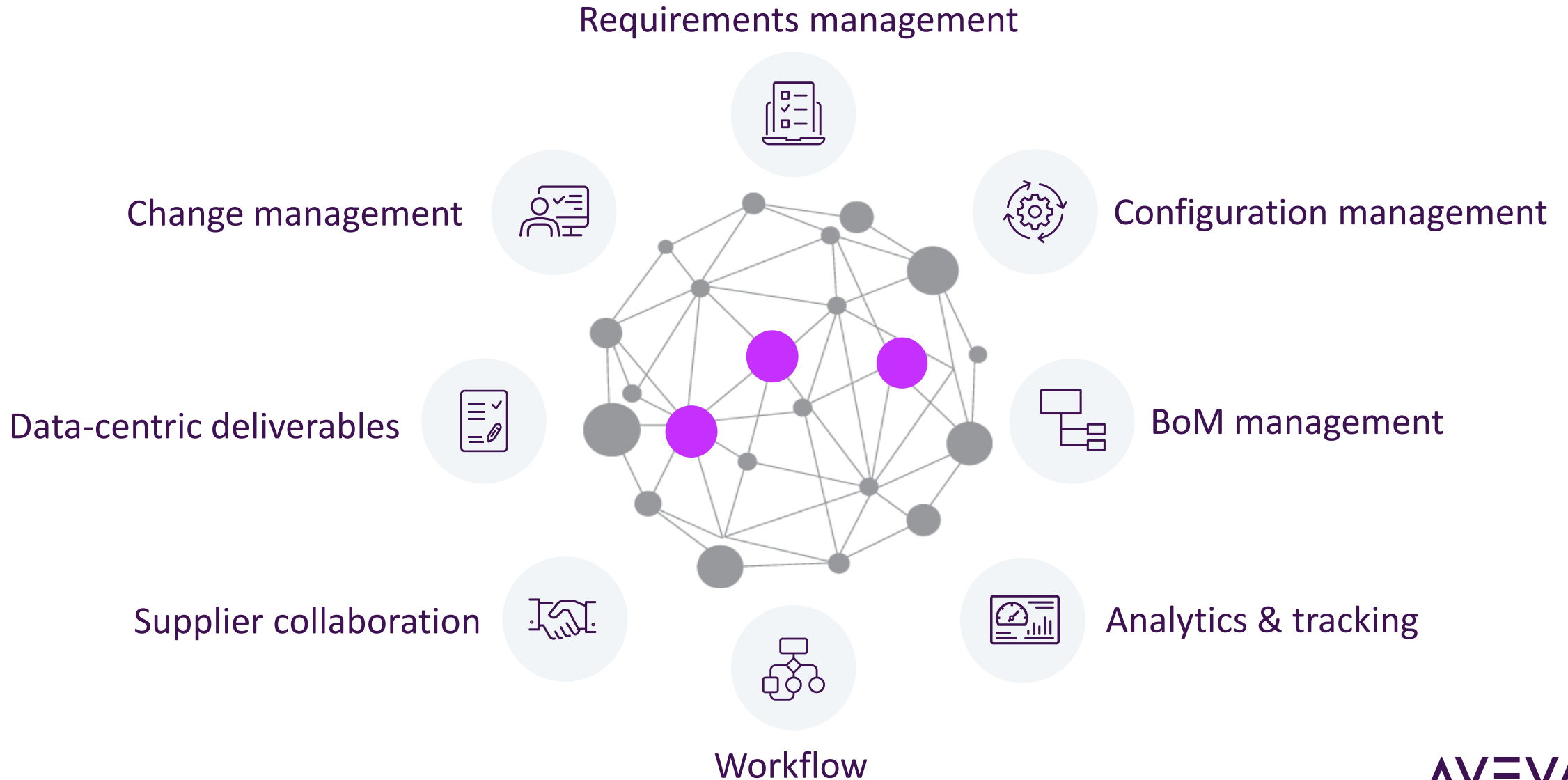
Initiating change at the source of the project data

- Intelligent commenting and markup on objects (basic change control), schematics, and documents
- Accelerates turnaround with rapid feedback loops and real-time discussion threads
- External feedback capability
- APIs provide access to released data for the entire asset lifecycle (commissioning, operations, maintenance, etc.)



Roadmap

Asset lifecycle management



Asset lifecycle management capabilities

Time Horizons

NOW



Object & data-centric deliverables

NEXT



Automated data validation



Change management

FUTURE



Requirements management



BoM management



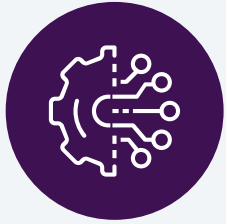
Supplier collaboration



Configuration management

Data validation as a service

API



Designed from the ground up as an application programming interface (API), VaaS can be embedded in other AVEVA applications, AVEVA partner solutions, or 3rd party offerings.

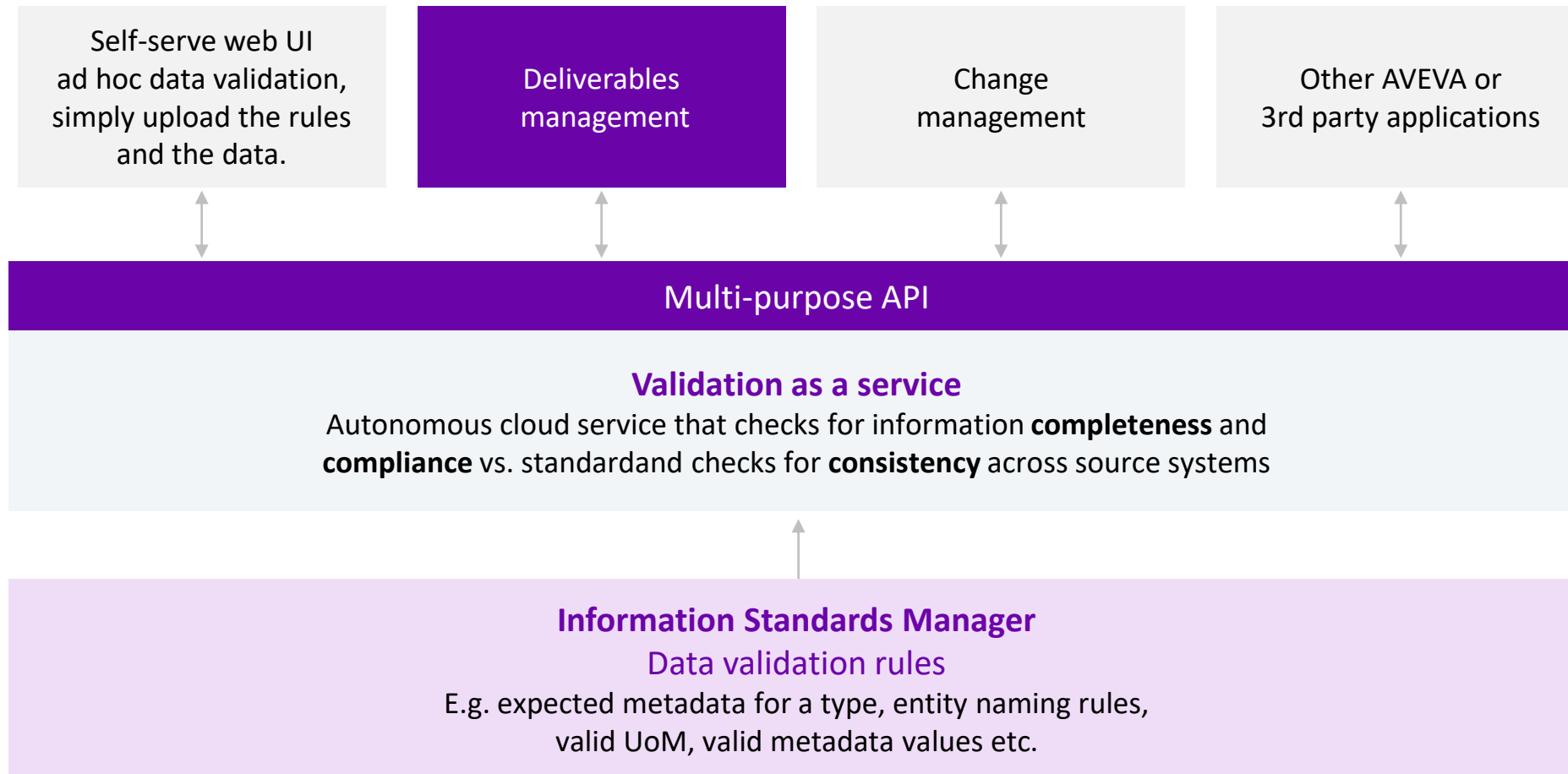
Self-service web UI



A cloud-native web portal for users to perform manual or ad hoc validations of data. For example, for internal progress reporting, in preparation for handover to a customer, or to assess the quality and integrity of data received from a supplier.

Validation as a service in ALM

Instant and comprehensive data validation support for multiple scenarios

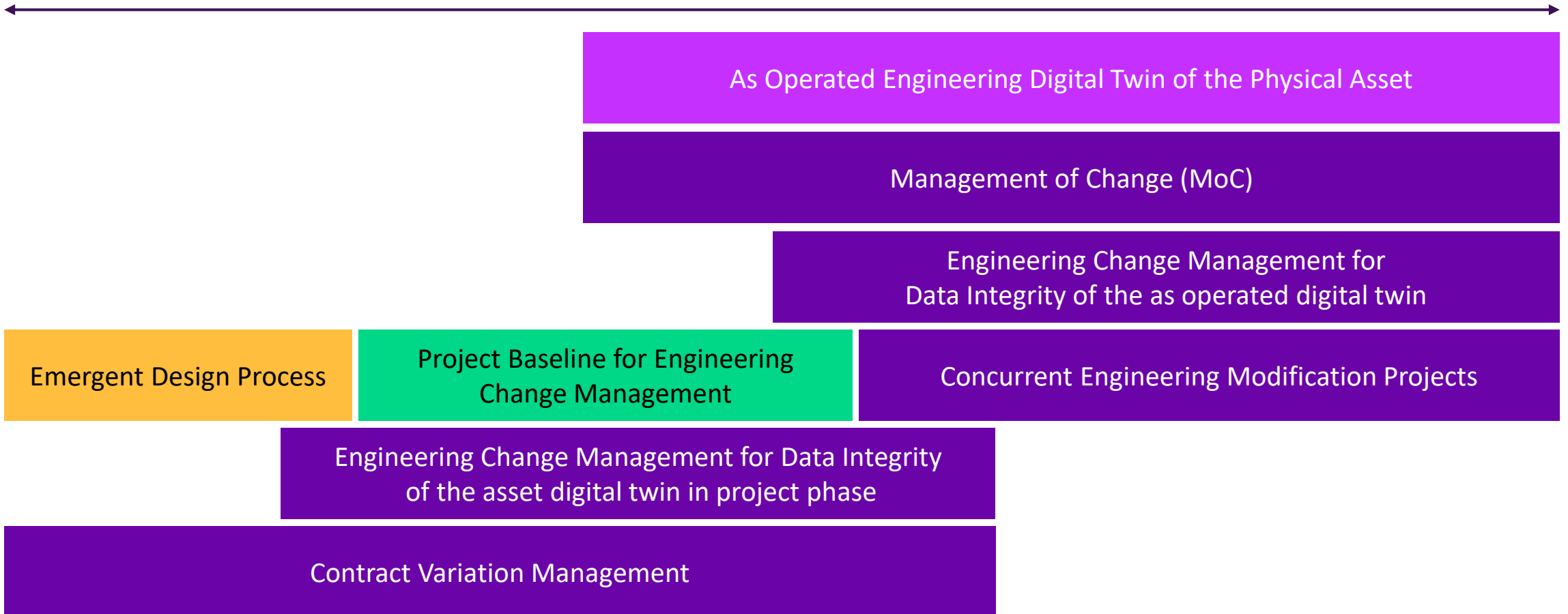


Change management

“Manage changes against an established baseline to ensure data integrity”

Capital Project

Operations



Questions?



Please wait for
the microphone.
State your name
and company.

Please remember to...

Navigate to this session in the
mobile app to complete the survey.

And please visit us on the
AVEVA “Design and Build”
or Aras booths in the
Innovation Zone to learn
more and see a demo...

Thank you!



AVEVA

Recommended sessions

Aras: Rethinking Digital Thread for Product and Asset Lifecycle Management

Aras

Wednesday, October 16 @ 10:45 am

Capital project synergy: EPCs and OOs in the energy transition

Engineering Roundtable Discussion

Thursday, October 17 @10 am



This presentation may include predictions, estimates, intentions, beliefs and other statements that are or may be construed as being forward-looking. While these forward-looking statements represent our current judgment on what the future holds, they are subject to risks and uncertainties that could result in actual outcomes differing materially from those projected in these statements. No statement contained herein constitutes a commitment by AVEVA to perform any particular action or to deliver any particular product or product features. Readers are cautioned not to place undue reliance on these forward-looking statements, which reflect our opinions only as of the date of this presentation.

The Company shall not be obliged to disclose any revision to these forward-looking statements to reflect events or circumstances occurring after the date on which they are made or to reflect the occurrence of future events.

 [linkedin.com/company/aveva](https://www.linkedin.com/company/aveva)

 [@avevagroup](https://twitter.com/avevagroup)

ABOUT AVEVA

AVEVA is a world leader in industrial software, providing engineering and operational solutions across multiple industries, including oil and gas, chemical, pharmaceutical, power and utilities, marine, renewables, and food and beverage. Our agnostic and open architecture helps organizations design, build, operate, maintain and optimize the complete lifecycle of complex industrial assets, from production plants and offshore platforms to manufactured consumer goods.

Over 20,000 enterprises in over 100 countries rely on AVEVA to help them deliver life's essentials: safe and reliable energy, food, medicines, infrastructure and more. By connecting people with trusted information and AI-enriched insights, AVEVA enables teams to engineer efficiently and optimize operations, driving growth and sustainability.

Named as one of the world's most innovative companies, AVEVA supports customers with open solutions and the expertise of more than 6,400 employees, 5,000 partners and 5,700 certified developers. The company is headquartered in Cambridge, UK.

Learn more at www.aveva.com