



**AVEVAWORLD**  
PARIS

OCTOBER 2024

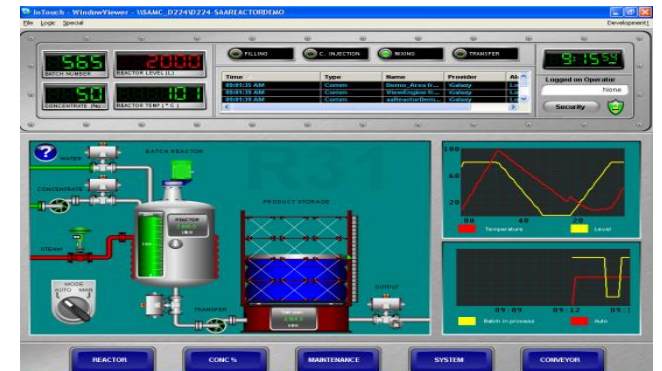
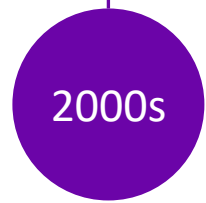
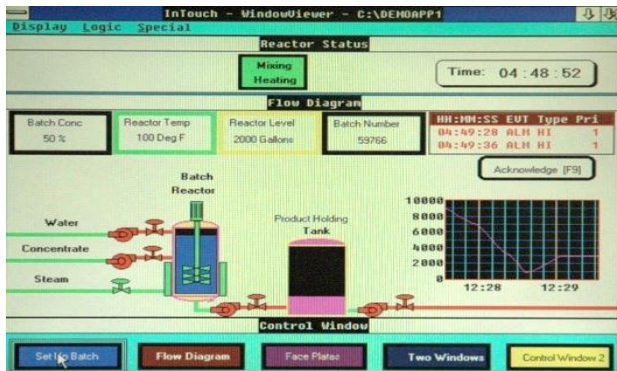
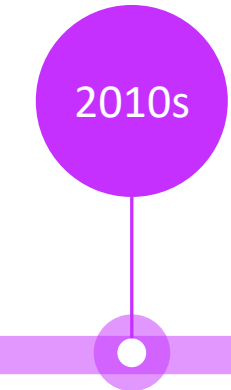
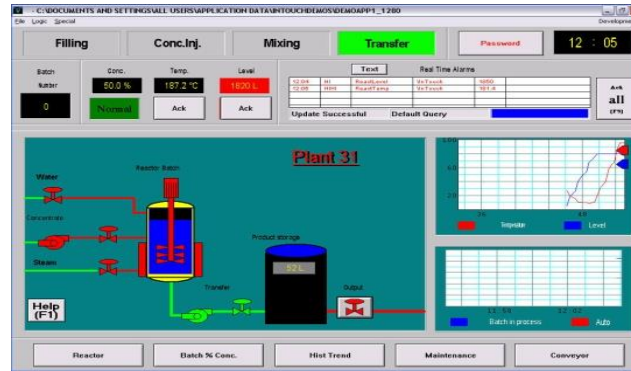
---

# Roadmap: AVEVA™ Edge software

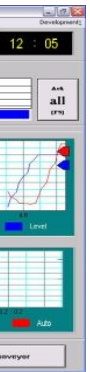
Driving efficiency for plant floor monitoring and control

Rickard Norin, Senior Product Manager – Operations Control Edge

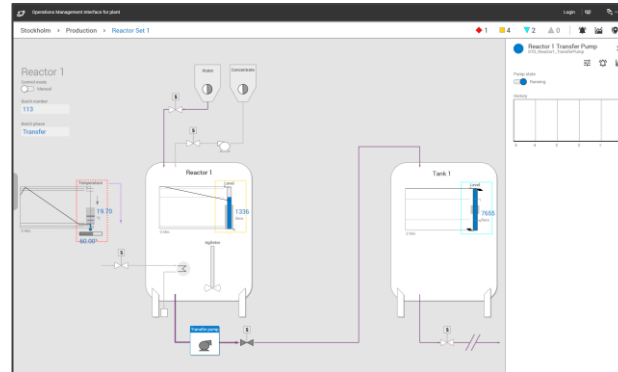
# An unprecedented journey



# An unprecedented journey



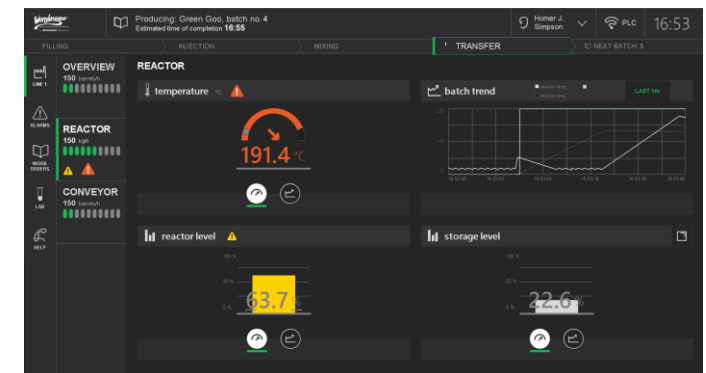
2010s



Today



2020s



# A new journey begins now!

AVEVA™ InTouch HMI & AVEVA™ Edge are undergoing fundamental modernization, workflow enhancements, and unification

- Modernization at an accelerated rate
- Emphasis on the legendary ease of use and productivity that the brands are known for
- Continued commitment to protecting investments and providing incremental value

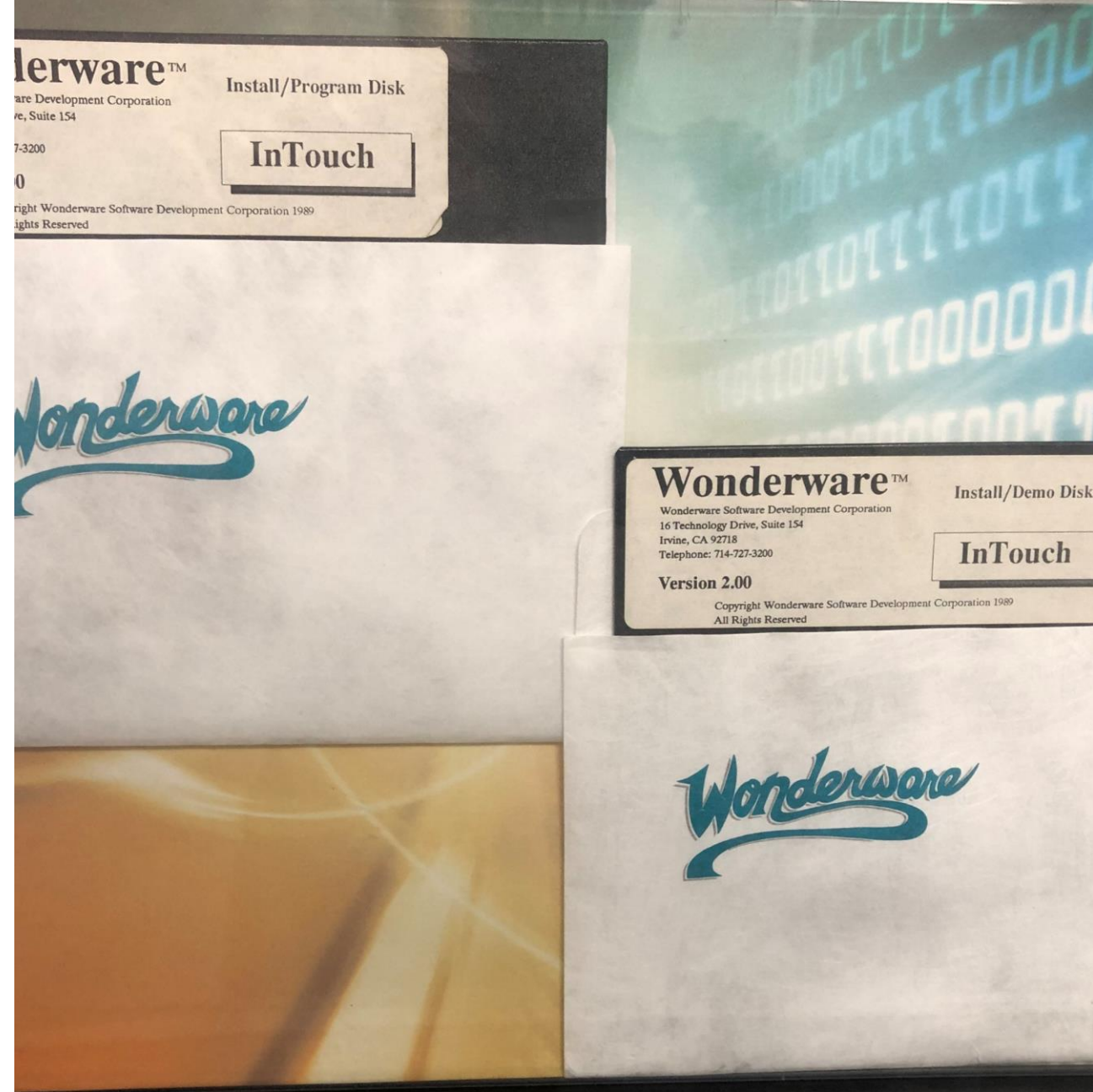


# Acquisition & installation

While the format has changed over the years, the AVEVA™ InTouch HMI installer has always been rooted in – and constrained by – the notion of a disk

- Floppy disks
- Optical disks
- Virtual disks

Increasingly complex post-install configuration



# Acquisition & installation

While the format has changed over the years, the AVEVA™ InTouch HMI installer has always been rooted in – and constrained by – the notion of a disk

- Floppy disks
- Optical disks
- Virtual disks

Increasingly complex post-install configuration

*Coming up: Embrace digital software delivery*

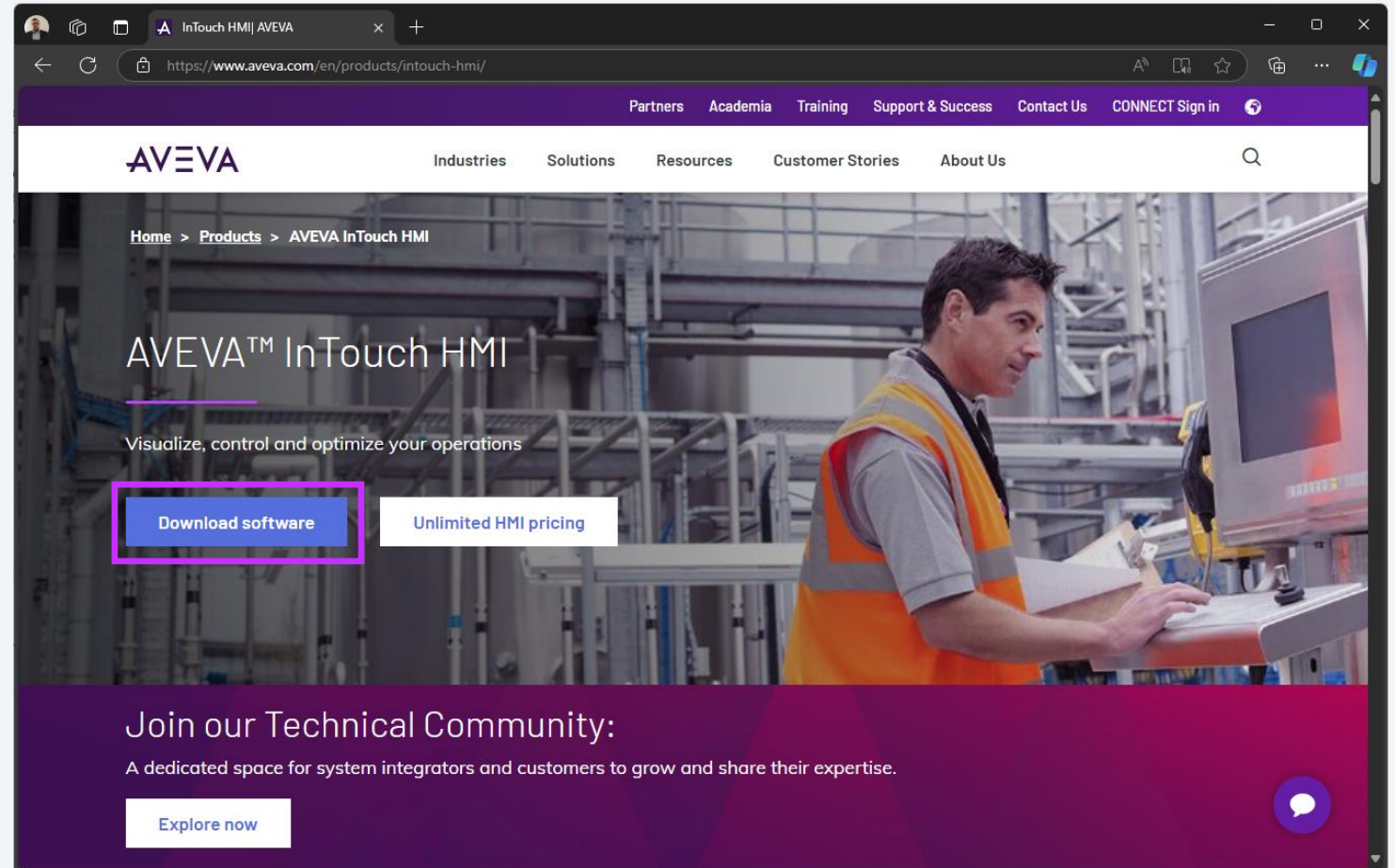


# Self-service access to AVEVA™ InTouch HMI via AVEVA.com

Available today

Step 1: Easy Access to AVEVA™ InTouch HMI directly from product page after self-service registration

Step 2: The installer...





Prototype

---

# InTouch HMI Installer

AVEVA

Publicly accessible  
documentation at  
[docs.aveva.com](https://docs.aveva.com)

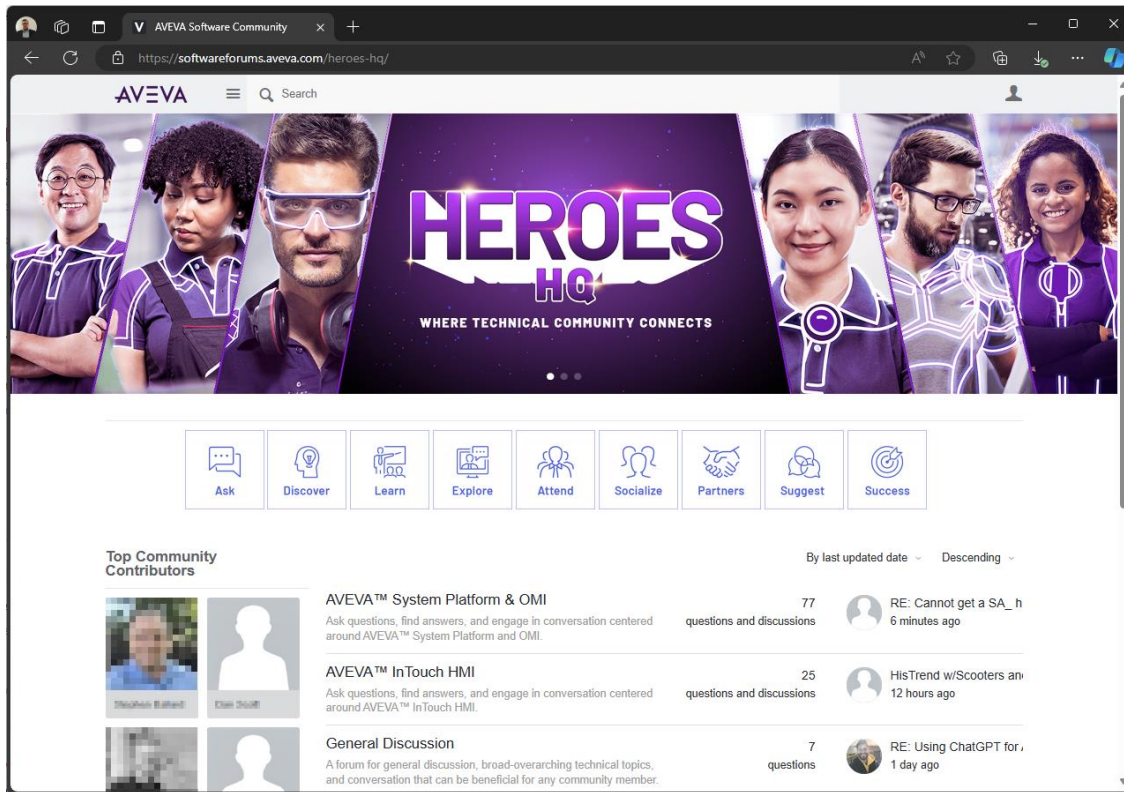
Open access to AVEVA™ InTouch  
HMI product documentation

Available today

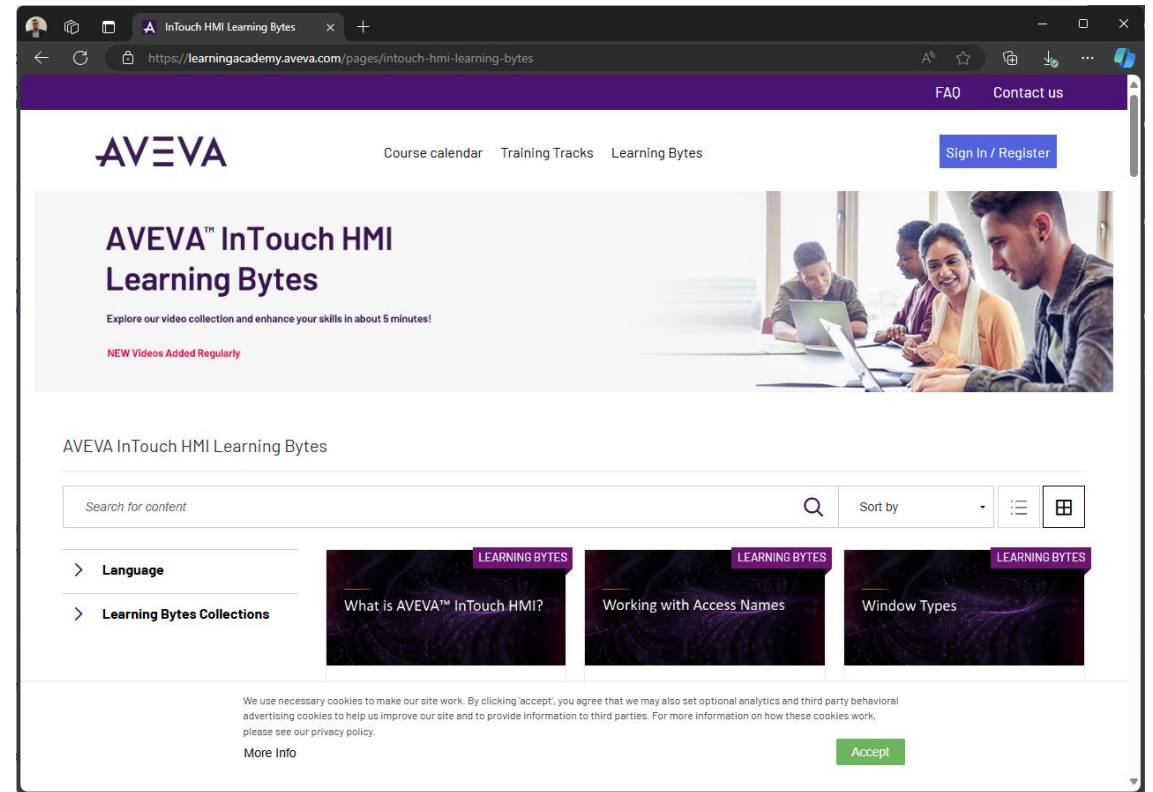
The screenshot shows a web browser displaying the AVEVA InTouch HMI documentation page. The browser's address bar shows the URL: <https://docs.aveva.com/bundle/intouch-hmi/page/1389140.html>. The page features the AVEVA logo at the top left and navigation links for Library, More Sites, About, and Login at the top right. A search bar is located below the navigation, with the text "Search Documentation Current publication" and a search icon. The main content area is titled "AVEVA™ InTouch HMI" and includes a "TABLE OF CONTENTS" on the left side. The table of contents lists the following sections: Welcome to AVEVA InTouch HMI (with sub-items: Legal Information, Contact information), Release Notes, Install and upgrade InTouch HMI, Get Started, Design Standards, Build, Deploy, Operate, and Maintain. The main content area displays the "Welcome to AVEVA InTouch HMI" page, dated Jul 18, 2024, with tags for HMI and SCADA, System Platform, and InTouch HMI 2023 R2 P01. The page content includes a definition of InTouch HMI and a list of topics covered in the document, such as preparing the development environment, managing applications, configuring NAD, viewing graphics, and migrating applications. A "Related Links" section on the right side of the page lists "Legal Information" and "Contact information". A user profile icon is visible in the bottom right corner of the page.

# Need inspiration, or to exchange ideas with peers?

Available today



<https://softwareforums.aveva.com/heroes-hq/>



<https://learningacademy.aveva.com/pages/intouch-hmi-learning-bytes>

Design Mockup

InTouch™ IDE

File Home Draw Animation Properties View Help

Clipboard: Paste, Cut, Copy, Duplicate

Insert: Button, Text, Graphics, SmartSymbol, Wizards

Alignment: Left, Center, Right

Arrange: Bring to front, Send to back, Rotate

Spacing: Horizontal, Vertical, Center points

Graphic: Make, Break

Cell: Make, Break

Alarms: Alarm groups

Tags: Tag dictionary

Pages & Layouts

Search

- NewApp1
  - Layouts
    - Layout\_001
    - Layout\_002
  - Pages

### Create new data source

We could provide a helper text

**New connection**  Select driver (OPC UA Client)  Select server  Select device  Configure driver

Content type Search

#### Select driver

Available drivers

- OPC UA Client**  
Connects to OPC UA servers compliant with 1.05 specification
- MQTT**  
Connects MQTT 3.11 and 5.1 servers for JSON or Sparkplug data
- Allen Bradley CIP**  
Connects Controllogix, Compactlogix, Guardlogix devices
- Allen Bradley TCP**  
Secondary text

Industrial Graphics

Search

- NewApp1
  - SQLGrid
  - Widgets
    - aaTrendControl
    - AlarmClient
    - TrendClient

AlarmClient

TrendClient

aaTrendControl

Pages & Layouts User defined type

Model - Tagname

Search

- UDT
  - Mixer100
  - Silo1
  - Silo2
  - Silo3

Watch Window

Name	Value	Quality	Timestamp

Model - Tagname Elements

Ready

X, Y 0, 0

InTouch™ IDE

File Home Draw Animation Properties View Help

Clipboard: Paste, Cut, Copy, Duplicate  
 Insert: Button, Text, Graphics, SmartSymbol, Wizards  
 Alignment: Left, Center, Right  
 Arrange: Bring to front, Send to back, Rotate  
 Spacing: Horizontal, Vertical, Center points  
 Graphic: Make, Break  
 Cell: Make, Break  
 Alarms: Alarm groups  
 Tags: Tag dictionary

Design Mockup

Pages & Layouts

Search

- NewApp1
  - Layouts
    - Layout\_001
    - Layout\_002
  - Pages

Pages & Layouts User defined type

Model - Tagname

Search

- UDT
  - Mixer100
  - Silo1
  - Silo2
  - Silo3

Model - Tagname Elements

### Create new data source

New connection  Select driver OPC UA Client  Select server  Select device  Configure driver

#### Select server

Available servers	Description	title
<input type="radio"/> OPC UA Server 1		
<input type="radio"/> OPC UA Server 2		
<input type="radio"/> OPC UA Server 3		

Watch Window


Name	Value	Quality	Timestamp

Industrial Graphics


Search

- NewApp1
  - SQLGrid
  - Widgets
    - aaTrendControl
    - AlarmClient
    - TrendClient


AlarmClient



TrendClient



aaTrendControl



Industrial Graphics Properties

Ready

X, Y 0, 0

InTouch™ IDE

Design Mockup

File Home Draw Animation Properties View Help

Clipboard: Paste, Cut, Copy, Duplicate  
 Insert: Button, Text, Graphics, SmartSymbol, Wizards  
 Alignment: Left, Center, Right  
 Arrange: Bring to front, Send to back, Rotate  
 Spacing: Horizontal, Vertical, Center points  
 Graphic: Make, Break  
 Cell: Make, Break  
 Alarms: Alarm groups  
 Tags: Tag dictionary

**Data sources**

- Root
  - Objects
    - BuildingAutomation
      - Demo
        - 000\_Static
        - 001\_Dynamic
        - 002\_History
        - 003\_Method
        - 004\_Events
        - 005\_AccessRights
        - 006\_Massfolder\_Static
        - 007\_Massfolder\_Dynamic
        - 008\_DynamicNodes
        - 009\_BoilerDemo**
          - Boiler1**
            - Fill
            - FillLevelSensor
            - FillLevelSetPoint
            - Heat
            - HeaterStatus
            - TemperatureSensor
            - TemperatureSetPoint
          - 010\_ComplianceIest
          - 011\_UnicodeTest
          - 012\_Icon
          - 013\_Images
          - 014\_Files
          - 015\_WorkOrder
          - 016\_StateMachines
          - SetSimulationSpeed
          - SimulationActive
          - SimulationSpeed

**Page\_001**

Graphic Elements  
Industrial Graphics

**Industrial Graphics**

Search

- NewApp1
  - SQLGrid
  - Widgets
    - aaTrendControl
    - AlarmClient
    - TrendClient

AlarmClient    TrendClient

aaTrendControl

Industrial Graphics    Properties

**Watch Window**

Name	Value	Quality	Timestamp

Model - Tagname    Elements

Ready

X, Y 0, 0

---

# Tag Engine

Allan Beckman

August 2024

# Many more enhancements

Beginning to refactor the runtime as 64-bit process

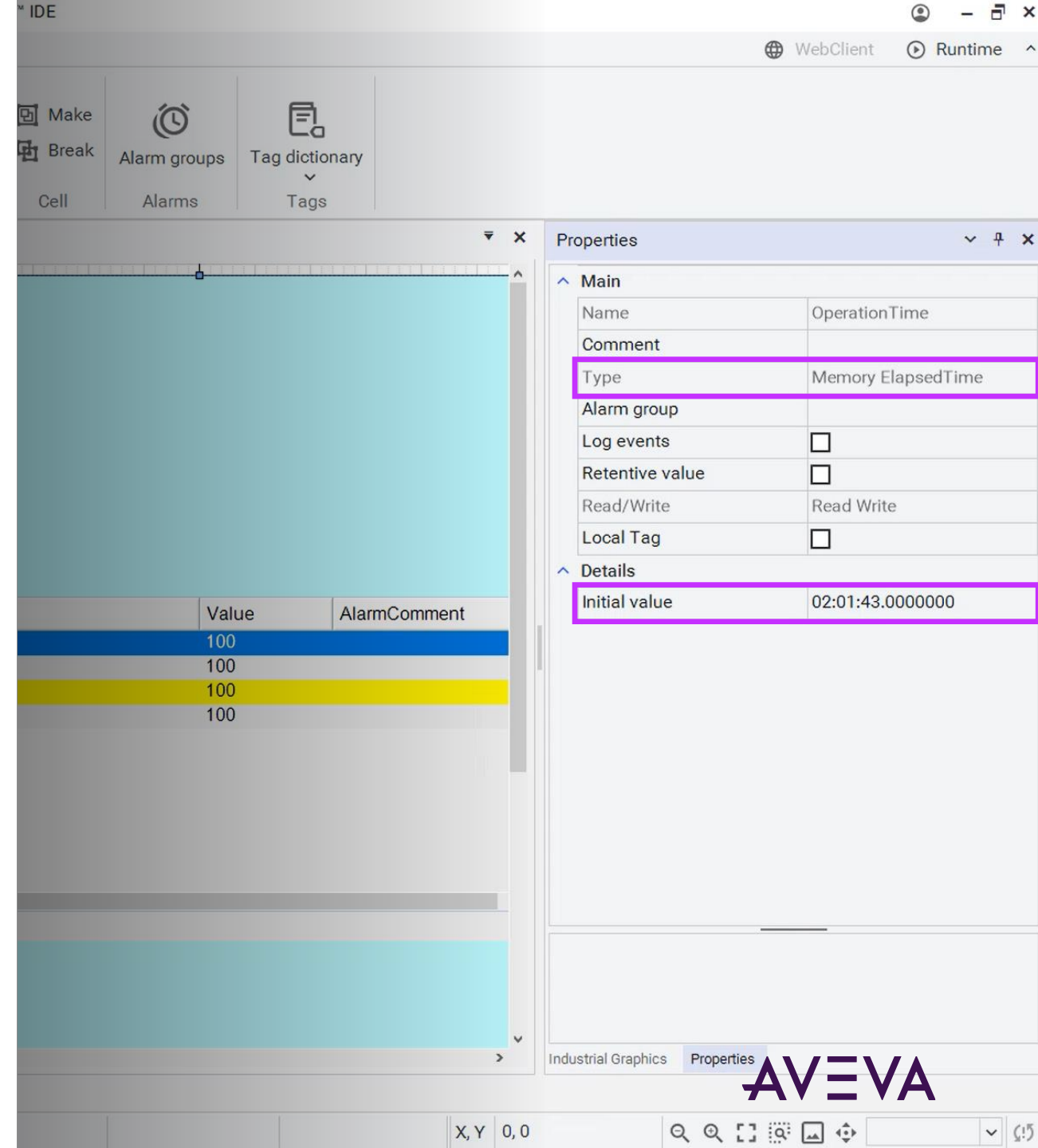
Adopting contemporary terminology

Old	New
Discrete	Bool
Integer	Integer
Real	Float
Message	String

Unlimited length string tags

New data types

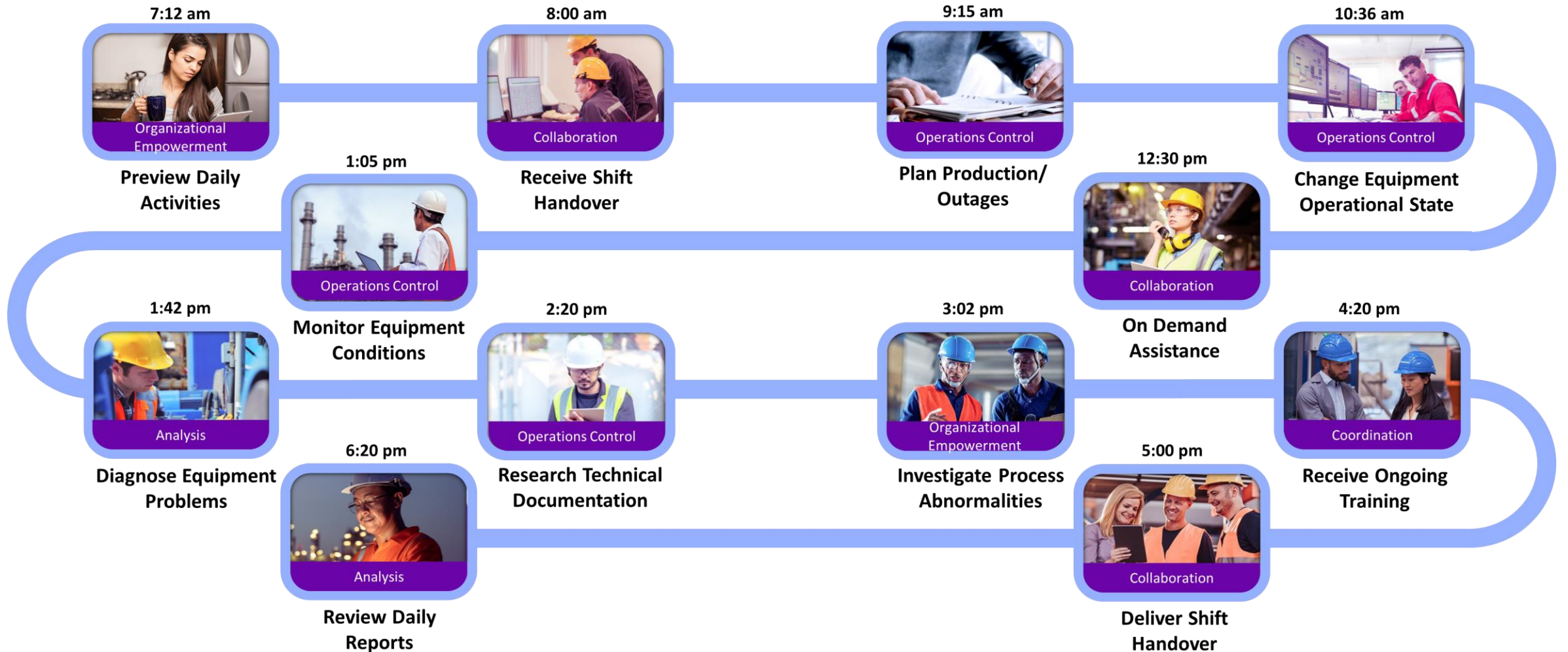
- Double
- ElapsedTime
- More to come



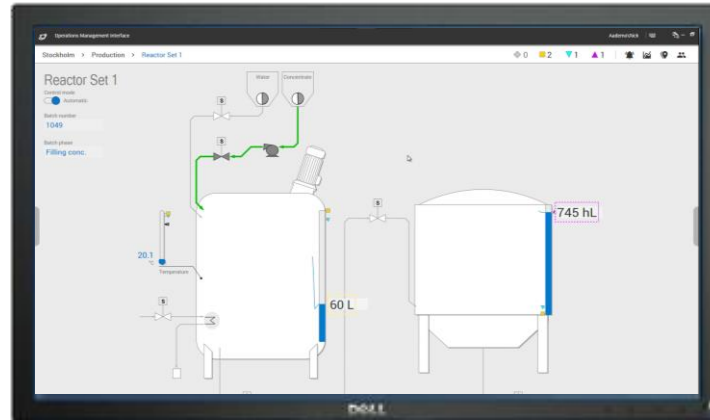


# Operations – a day in life

Enabled by AVEVA™ Operations Control – hybrid SaaS solution



# Traditional presence at the edge



# Expanded presence



# Expanded presence

Collaboration thrives with unambiguous and consistently-visualized information

## One graphics technology

Rich immersive AVEVA™ Industrial Graphics

- Organized by Layouts

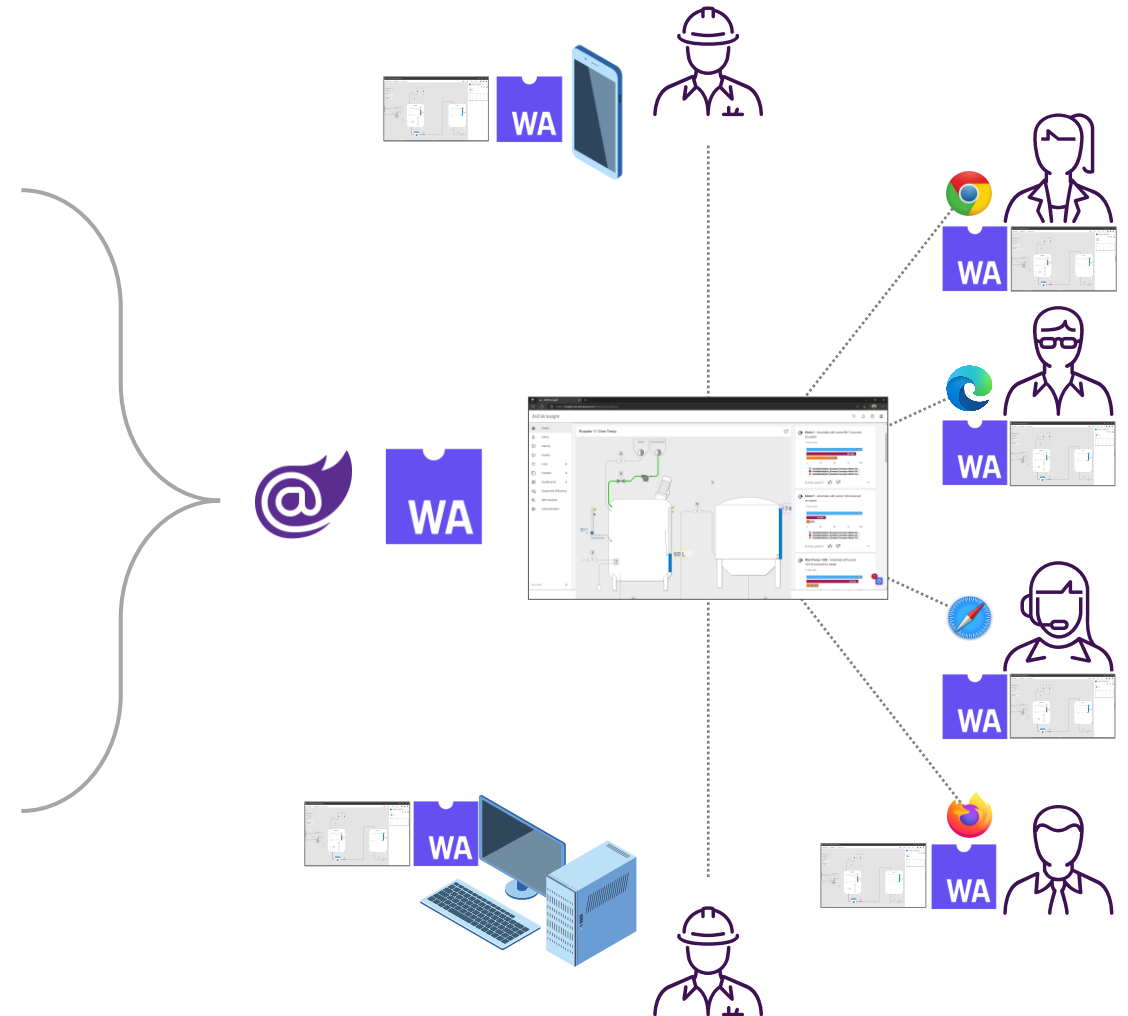
## One rendering mechanism

Same code across all devices and form factors means a single graphics features set, pixel-perfect consistency

- Highly performant and scalable client-side application

## [Optional] One commercial model

Access unlimited data for unlimited applications through unlimited devices with a single license



Same application – different UX design philosophies

This is the flexibility of AVEVA Industrial Graphics

Available today

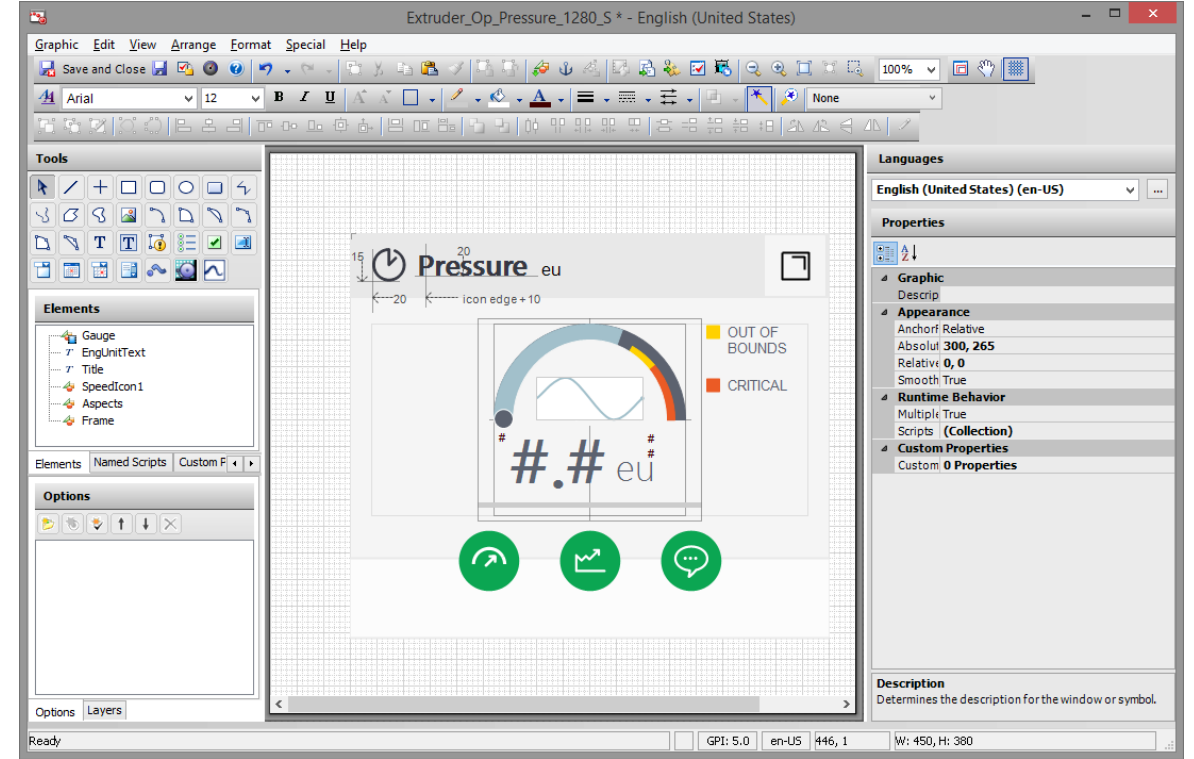
The image displays four different user interface designs for an industrial control system, illustrating the flexibility of AVEVA Industrial Graphics. Each screenshot shows a different layout and data presentation for the same underlying process.

- Top Left:** A traditional control room interface with a data table at the top, digital readouts for key variables (Concentrate %, Batch Number, Reactor Level, Reactor Temp), and a 3D process diagram below.
- Top Right:** A modern, data-centric interface featuring a table of active alarms and a schematic diagram of the process flow.
- Bottom Left:** A clean, minimalist interface with a large 3D model of the reactor and tank, and a sidebar for process parameters.
- Bottom Right:** A dark-themed dashboard with large, prominent data points (191.4°C, 63.7%, 22.6%) and a batch trend graph.

# Designer & developer collaboration

Available today

## SVG import





# AVEVA HMI Design Time

Prototype

# One visualization technology across all products and services

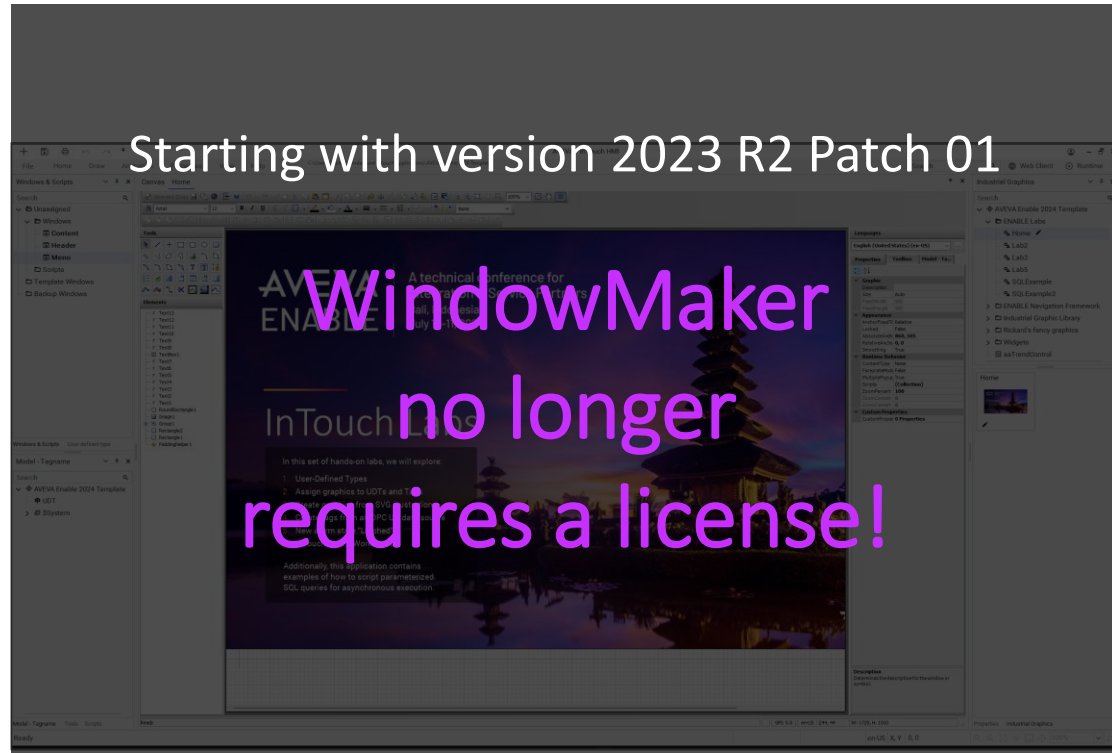




# No license? No problem!

Available today

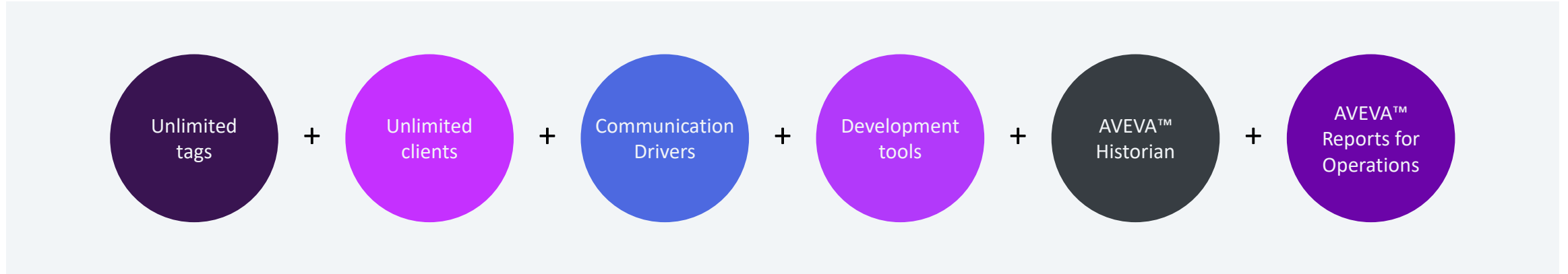
## Development



## Runtime



# AVEVA™ InTouch Unlimited



## InTouch *Unlimited* Standard Perpetual license

Build efficient HMIs, communicate with automation devices and controllers, and log historical process data as well as alarms and events

\$12,000

## InTouch *Unlimited* Professional Perpetual license

Scale up to data-intensive applications and manage multi-node deployment. Create and share self-service real-time dashboards. Expose application data through OPC UA Server.

\$20,000

## InTouch *Unlimited* Premier Subscription

Pay-as-you-go commercial model. Same feature set as Professional, adding Unlimited Historian.

Contact distributor

Features	AVEVA™ Operations Control (subscription only)	AVEVA™ InTouch Unlimited Premier (subscription only)	AVEVA™ InTouch Unlimited Professional (\$20,000)	AVEVA™ InTouch Unlimited Standard (\$12,000)
Number of tags	Unlimited	Unlimited	Unlimited	Unlimited
Number of web clients	Unlimited	Unlimited	Unlimited	Unlimited
Number of Remote Desktop clients	Unlimited	Unlimited	Unlimited	n/a
Historian Server tags	Unlimited	Unlimited	5,000 tags	500 tags
Communication Drivers, incl. OPC UA, MQTT	Unlimited	Professional Edition	Professional Edition	Standard Edition
Licensed nodes	Unlimited	2	1*	1*
AVEVA Reports for Operations	Included	Included	Included	
SaaS entitlements (Teamwork, InSight, Dev Studio)	Included			

\* Redundant standby node at ½ price

# Roadmap to a unified AVEVA Edge offer

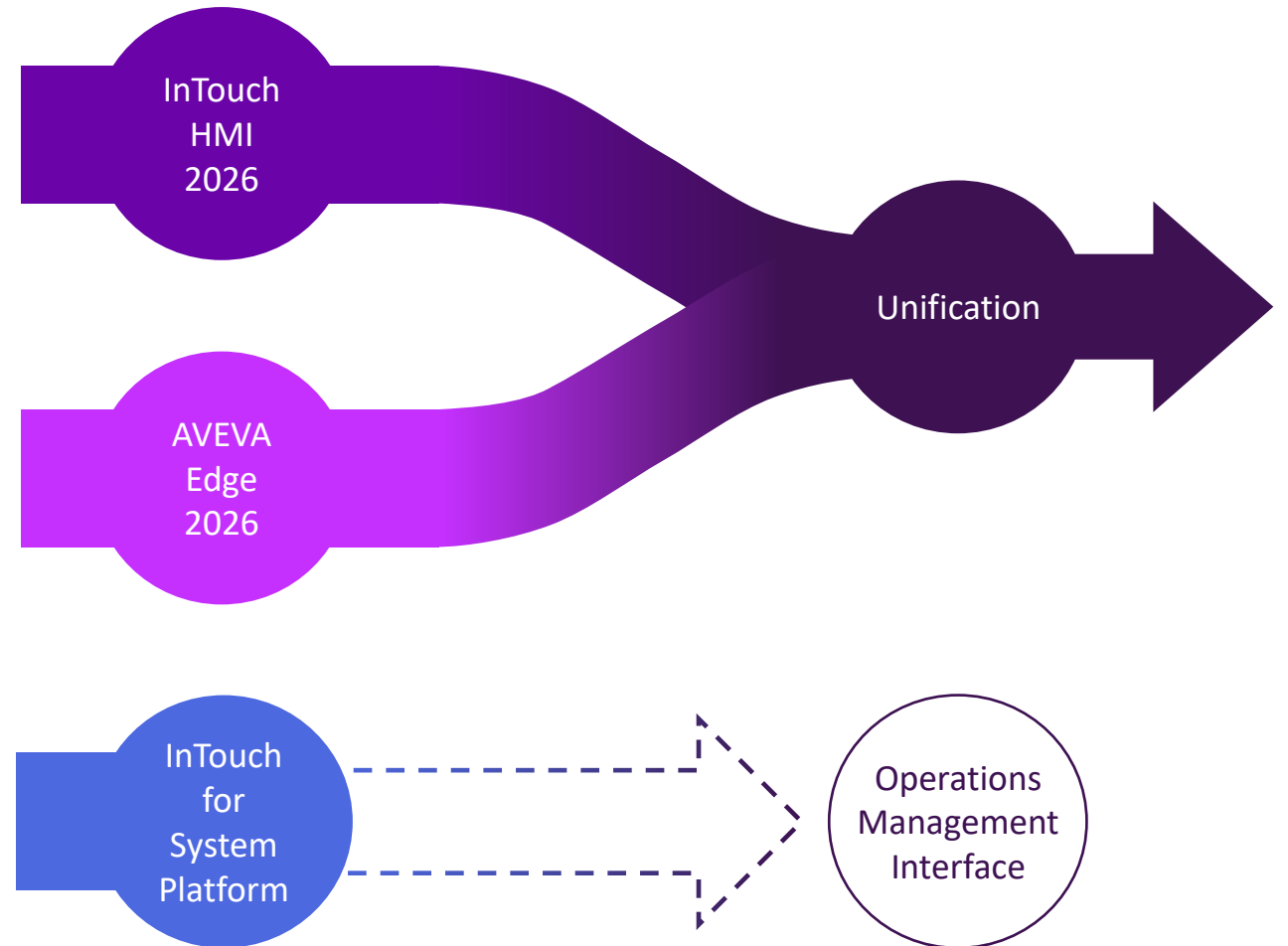
## AVEVA™ InTouch HMI – significant modernization in CY 2025

- Modernized and streamlined installation experience
- Edge-driven development + many UX improvements
- Modernized and unified visualization framework
- [Partial] 64-bit platform-independent runtime
  - Data type enhancements

## AVEVA™ Edge – close gaps and drive co-innovation

- Python scripting – expand across portfolio
- Quality of life enhancements
- MQTT enhancements

## Ramp up migration support for AVEVA™ InTouch for System Platform to OMI



# More about AVEVA™ Operations Control Edge

**Deep dive into the latest enhancements!**

**Visit the innovation zone!**

**Name**

AVEVA InTouch HMI: Deep dive into latest enhancements

**Time**

2:45 PM - 3:15 PM

HMI/SCADA

**Description**

Discover the technical and commercial innovations in AVEVA InTouch HMI 2023 R2. Join this session for tips and tricks on the world's most popular HMI software including:

How UDTs (User Defined Types) can provide engineering efficiency for your development teams

The latest use cases and features of AVEVA InTouch HMI's web client

How to move your plant floor data to the cloud using integrations with AVEVA InTouch HMI, AVEVA Teamwork and AVEVA Insight

**Speakers**

Scott Kortier - AVEVA

This presentation may include predictions, estimates, intentions, beliefs and other statements that are or may be construed as being forward-looking. While these forward-looking statements represent our current judgment on what the future holds, they are subject to risks and uncertainties that could result in actual outcomes differing materially from those projected in these statements. No statement contained herein constitutes a commitment by AVEVA to perform any particular action or to deliver any particular product or product features. Readers are cautioned not to place undue reliance on these forward-looking statements, which reflect our opinions only as of the date of this presentation.

The Company shall not be obliged to disclose any revision to these forward-looking statements to reflect events or circumstances occurring after the date on which they are made or to reflect the occurrence of future events.

 [linkedin.com/company/aveva](https://www.linkedin.com/company/aveva)

 [@avevagroup](https://twitter.com/avevagroup)

#### ABOUT AVEVA

AVEVA is a world leader in industrial software, providing engineering and operational solutions across multiple industries, including oil and gas, chemical, pharmaceutical, power and utilities, marine, renewables, and food and beverage. Our agnostic and open architecture helps organizations design, build, operate, maintain and optimize the complete lifecycle of complex industrial assets, from production plants and offshore platforms to manufactured consumer goods.

Over 20,000 enterprises in over 100 countries rely on AVEVA to help them deliver life's essentials: safe and reliable energy, food, medicines, infrastructure and more. By connecting people with trusted information and AI-enriched insights, AVEVA enables teams to engineer efficiently and optimize operations, driving growth and sustainability.

Named as one of the world's most innovative companies, AVEVA supports customers with open solutions and the expertise of more than 6,400 employees, 5,000 partners and 5,700 certified developers. The company is headquartered in Cambridge, UK.

Learn more at [www.aveva.com](https://www.aveva.com)