



**AVEVAWORLD**  
PARIS

AVEVAWORLD  
PARIS

OCTOBER 2024

---

# AVEVA™ Asset Information Management

Sarah Altroff – Product Director, Information Management

Antonio Retamero - Product Manager, Information Management

AVEVA

# The Digital Twin: Information Master Across the Asset Lifecycle

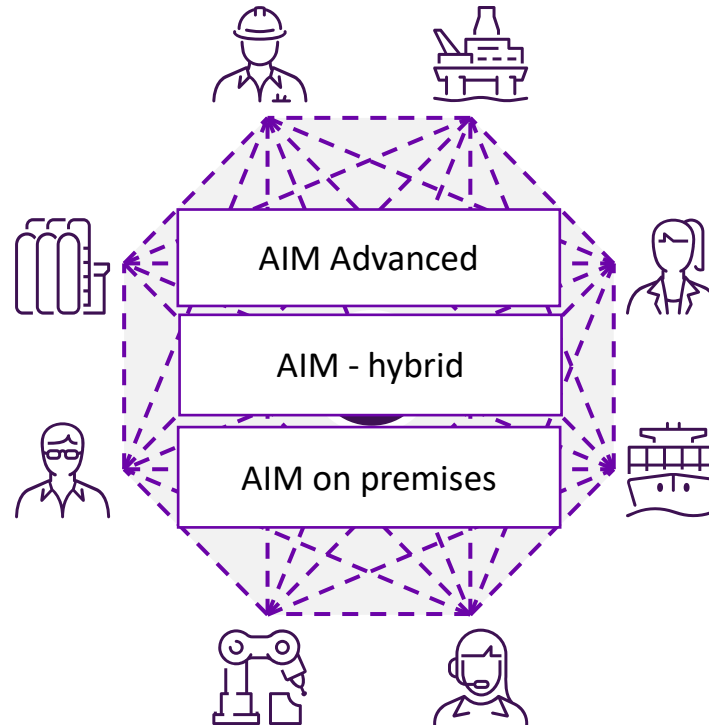
A unified data platform combining all data segments of industrial information.

## Data Aggregation

Single source of information  
for quick data access

## Data Sharing

Available through a common  
platform available to all  
  
Speeding up handover and  
operational readiness



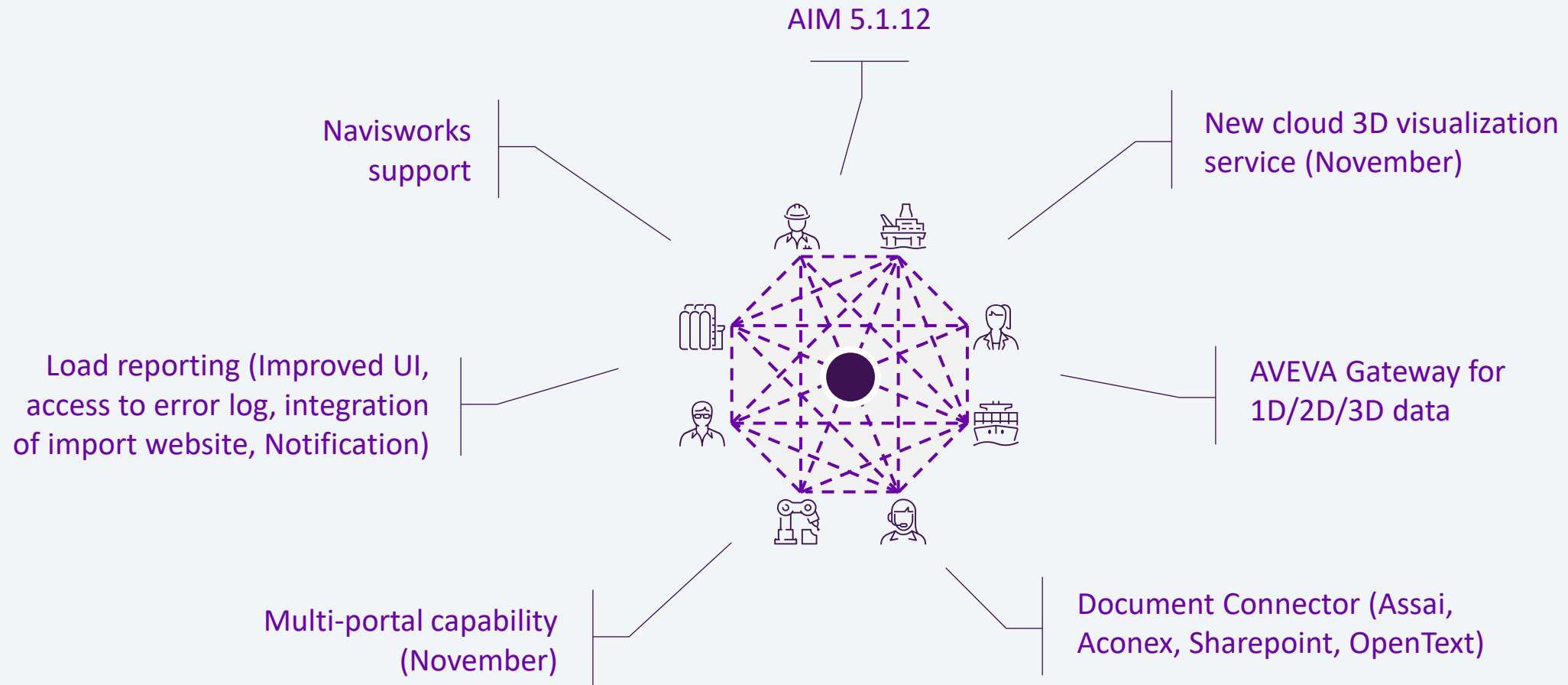
## Data in Context

Facilitating quick decision making  
through trusted information

## Data Harmonization

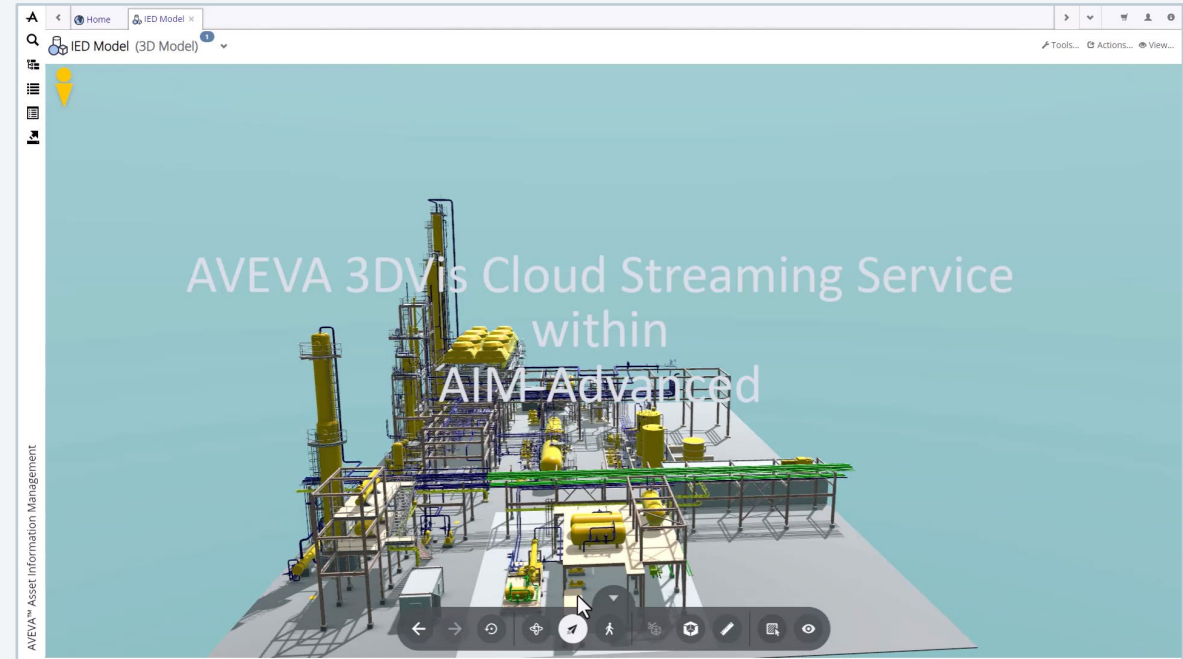
Aligning with customer  
standard and regulation  
  
Providing data  
quality and validation

# What Have We Delivered So Far in 2024?



# 3DVis Cloud Streaming Service

- Standalone, multi-tenant, scalable, cloud rendering service based on 3DVis rendering framework architected
- Adding Hide/Show/Isolate capabilities form 3D canvas
- Improving Fly/Walk modes
- Teleport active in all navigation modes
- New demanded features coming right after GA
- On premise equivalent under development



- |  |   |
|--|---|
|  Back (previous view)         |  Walk (navigation mode)                  |
|  Forward (return to view)     |  Clip (isolate objects in view)          |
|  Reset (initial load state) |  Section (remove objects in view)      |
|  Orbit (navigation mode)    |  Hide/Isolate (hide/isolate)           |
|  Fly (navigation mode)      |  Views (x-ray, shadows)                |
|  |  Measure (Point-to-Point, Path, Units) |

# AVEVA AIM - Strategic Pillars Moving Forward



## Moving to full SaaS

More data source processing  
in data pipeline  
AVEVA Gateway for 2D and 3D Data

ISM\*/AIM Integration  
Direct transfer of data  
model/configuration

Work Tasks/AIM  
Orchestration Improvement

PCM\*\*/AIM Integration



## Scalability

Multi-portals Management  
Portal ID support in AIM-A

API Improvement  
Faceted search API access



## Ease of maintenance and configuration

Gateway rationalization  
Shareable configuration  
of different Gateways

Configuration tool  
Support of the configuration for  
register gateway (on prem and cloud)

Admin Dashboard  
Support for operation task, UI  
customization, gateway configuration



## Improved User Experience

Next Generation AIM UI  
More modern and flexible  
Self Dashboarding  
AI Assistance  
Integration with operational data

3D Visualization  
On premise version  
More Capabilities (Markup,  
model composition...)

Faceted Search extension

\*AVEVA™ Information Standard Manager

\*\* AVEVA™ Point Cloud Manager

---

# Moving to Industrial Platform





# CONNECT

Unifying the industrial ecosystem with data,  
AI and deep domain expertise for greater sustainability and efficiency

## TRUSTED INTELLIGENCE

Single source of truth for  
proven applications

## ACTIONABLE INSIGHT

Closing the loop for  
real-world impact

## UNIFIED EXPERIENCE

Hundreds of perspectives.  
One shared reality

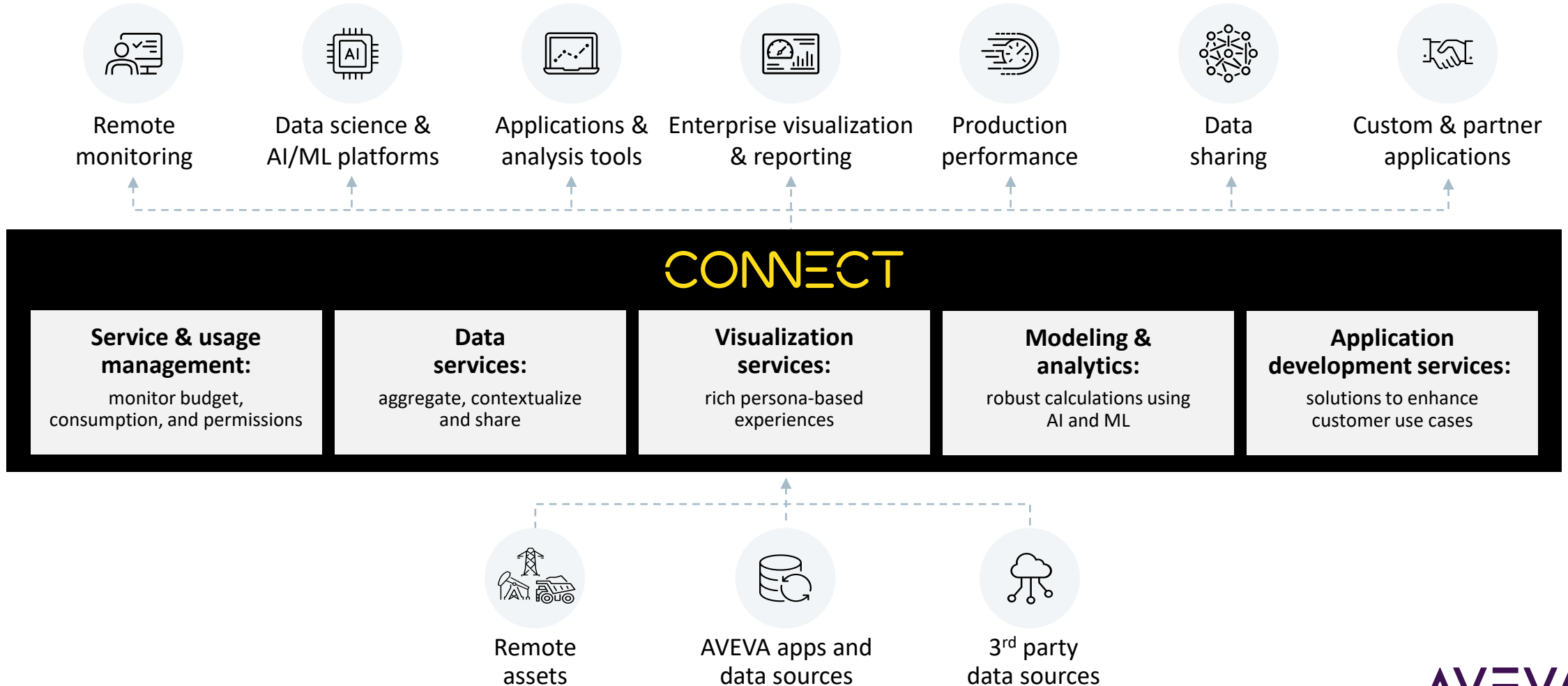
## EMPOWERED ECOSYSTEM

Accelerating the network  
effect across the value chain



# CONNECT, Our Industrial Intelligence Platform

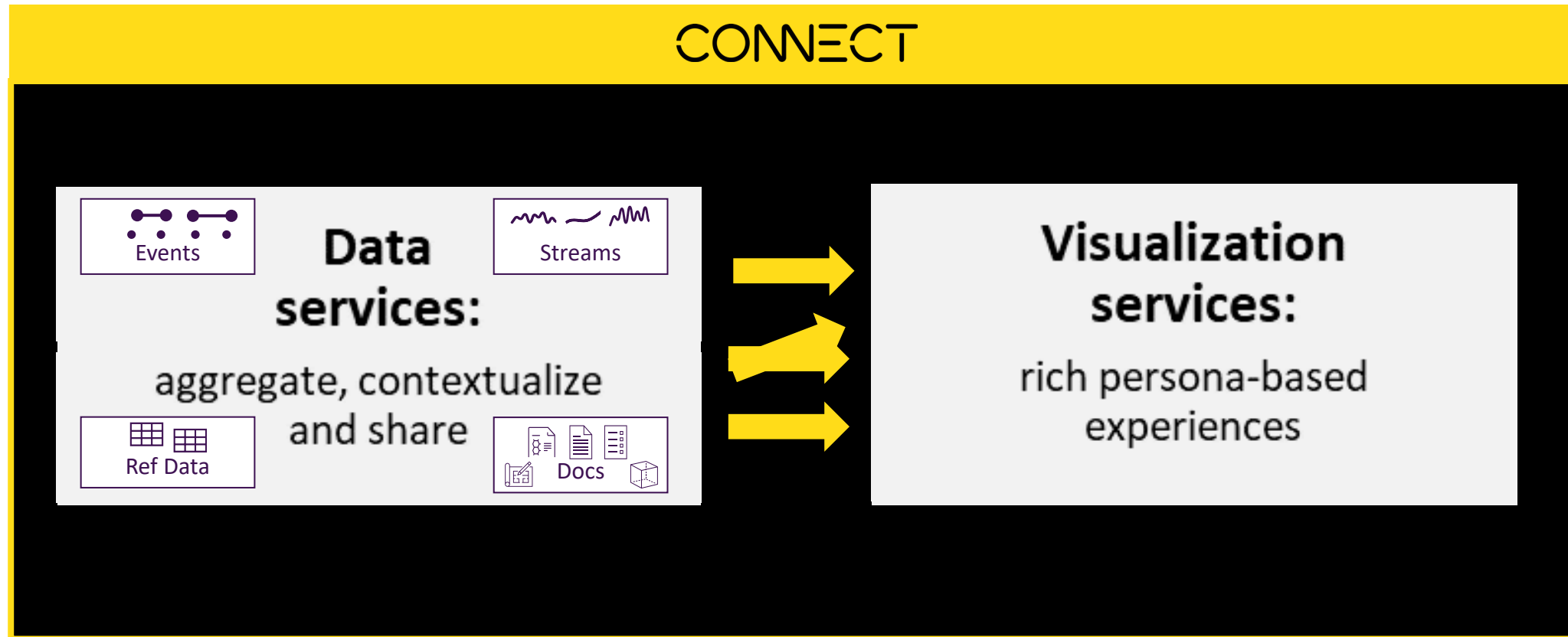
Open and neutral, providing rich data insights for your unified industrial ecosystem



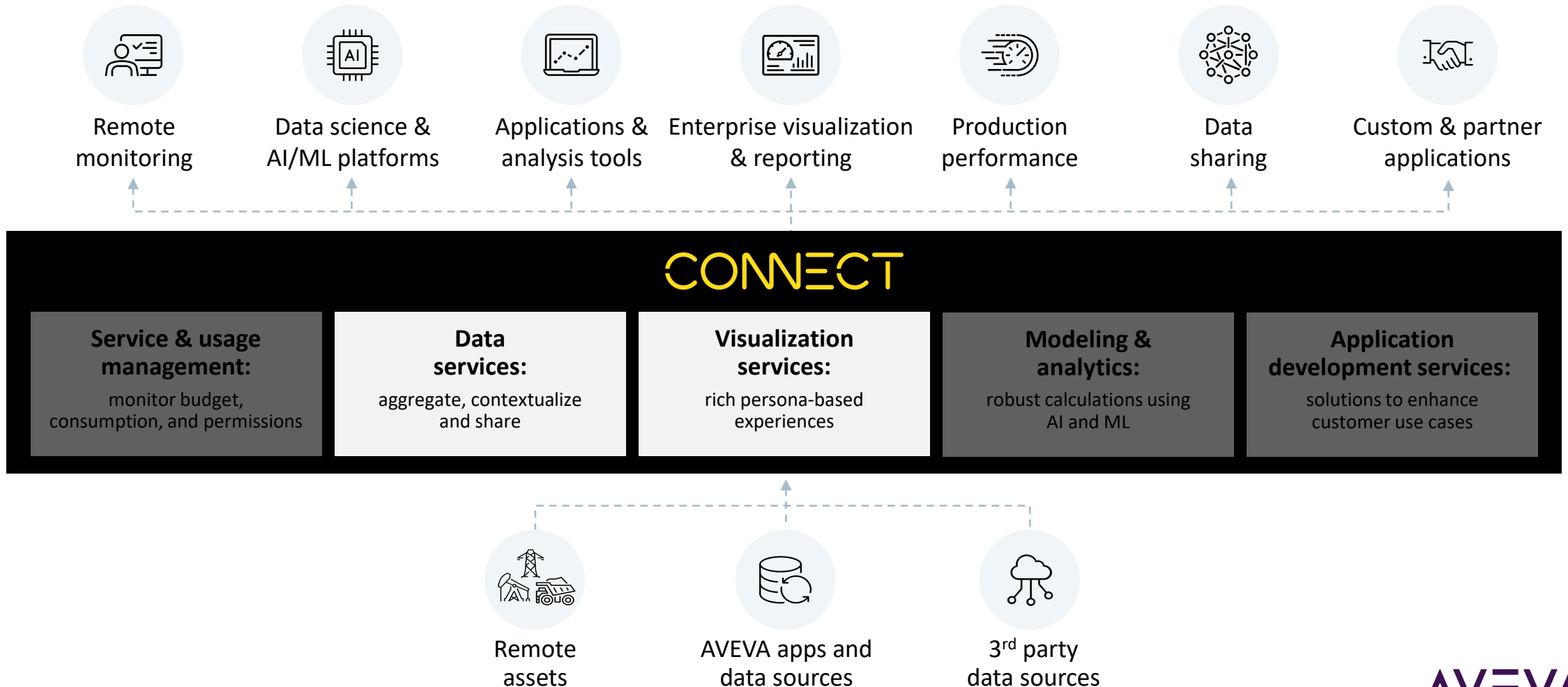
# AIM-A Transitioning

## Phased Approach

- Renaming of ADH and introduction of CDS / CVS
- Integration of AIM UI into CVS (Phase 1)
- Full integration of AIM UI into CVS
- Integration of AIM backend into CDS



# AIM-A Transitioning



# CONNECT Visualization Services

## Self-service

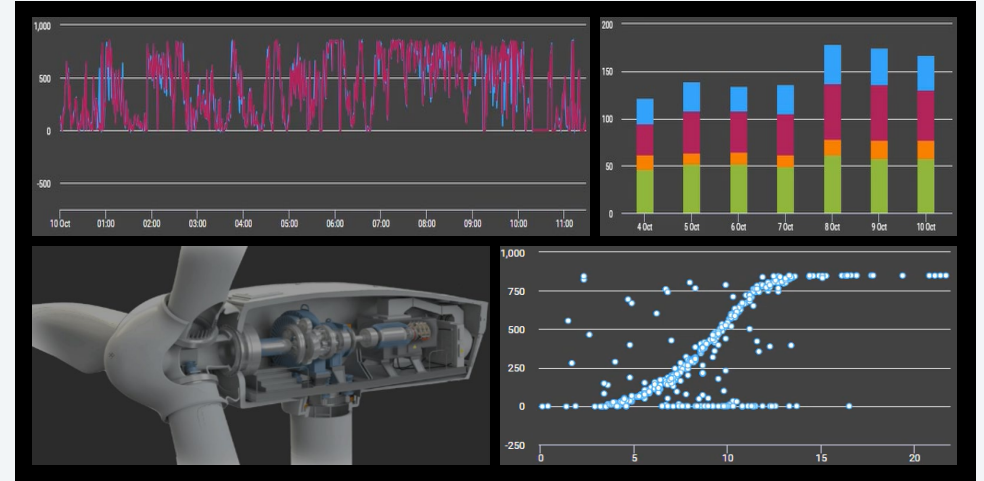
- Editable dashboards
- Arrange various content types
- No code experience
- Search for content
- Adjustable historical view

## Pre-defined

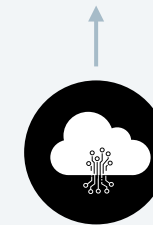
- Custom developed experiences
- Rich animations and dynamic styling
- Asset driven navigation
- Complex interactions
- Holistic operations view

## Visualize industrial data using self-service and pre-defined dashboards

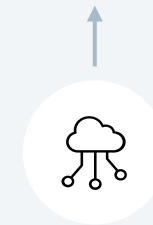
- Visually relate disparate data sources & systems in context to each other
- Gather insights between applications and across data types quickly and easily
- Share actionable information with operations, reliability, business, and other teams, anywhere through a browser



AIM



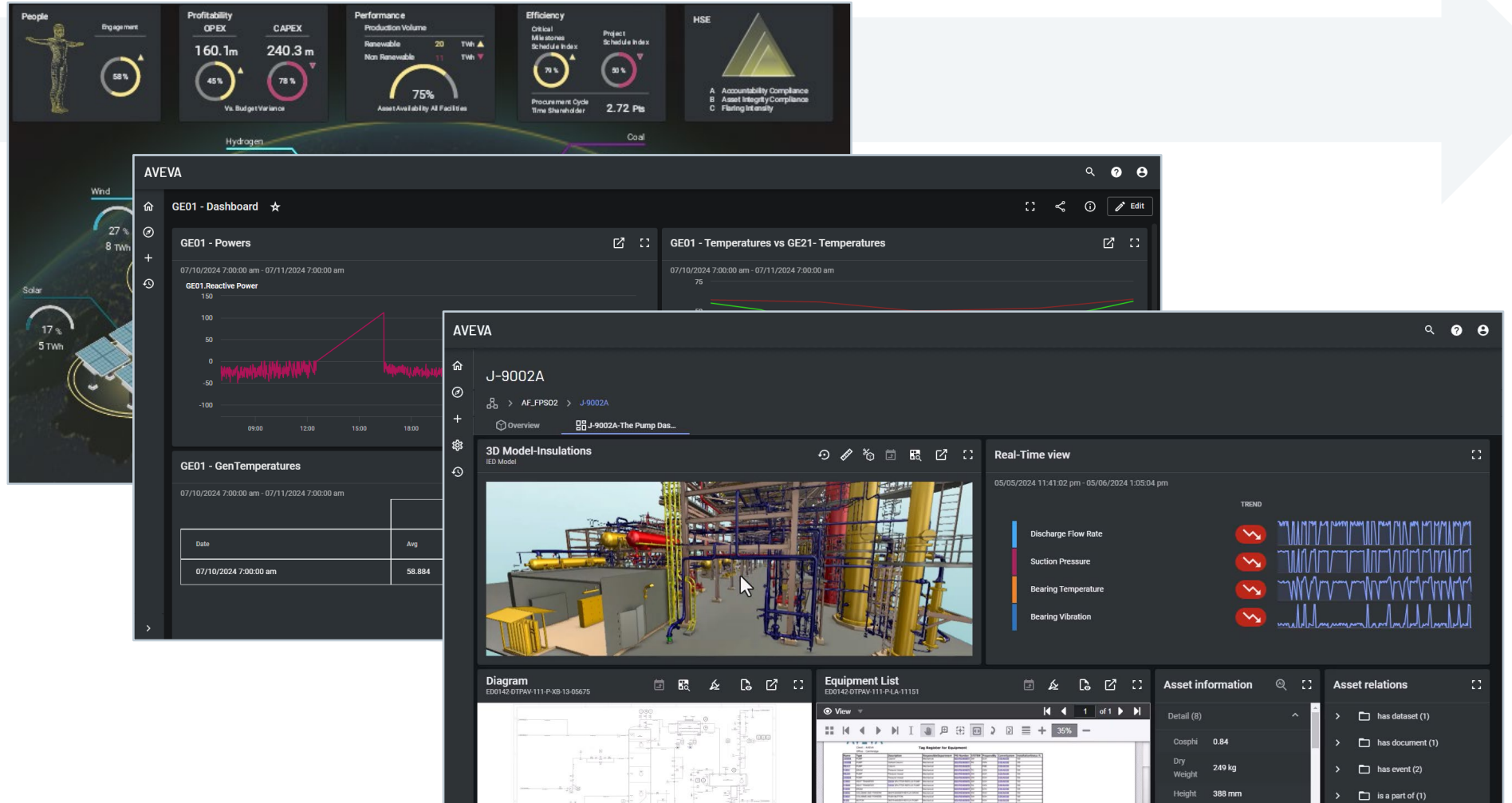
Data services



3<sup>rd</sup> party data sources

# CONNECT Visualization Services

Tighter integration



# CONNECT Visualization Services

Tighter integration

Business need focus





# CONNECT Visualization Services

Tighter integration

Business need focus

Self dashboarding

The image displays several overlapping screenshots of the AVEVA CONNECT Visualization Services interface. The top-left screenshot shows a 'Select Dashboard type' dialog with a 'Grid' option selected. The middle-left screenshot shows a 'Choose' menu with 'Event Visualization' highlighted. The top-right screenshot shows a 'Properties' dialog for a '3D Model'. The bottom-left screenshot shows a 'Properties' panel for an 'Asset ID' (LP Flare KD Drum Pump) with various technical specifications. The bottom-right screenshot shows a 'Save' dialog with 'My Team' selected as the user, and a 'Documents' panel on the right showing a list of documents and an 'Asset Status' section with charts for Discharge Flow Rate, Bearing Temperature, and Bearing Vibration.

# CONNECT Visualization Services

Tighter integration

Business need focus

Self dashboarding

AI assistance

The dashboard is divided into several sections:

- Turbine Summary:** A line chart showing turbine performance over time (08:00 to 10:00). A legend indicates four states: Turbines in Normal Operation (blue), Turbines in Low Wind (red), Turbines in Auto Stop (green), and Turbines in Curtailment (yellow).
- Wind Speed:** A gauge showing the current wind speed value, which is 9.
- Utilization Summary:** A bar chart showing the utilization status, currently set to 'Normal'.
- Documents:** A document viewer displaying a table of contents for a 'Normal Wind Turbine Maintenance Manual'. The table lists various components and their page numbers.
- Industrial AI Assistant:** A chat interface with a blue header. It displays a list of temperature readings for various components (e.g., G007 Bearing Shaft, G007 Bearing A Temperature) and a chat bubble with a question: 'Do you know how to check the bearing temperatures to go high at the same time? Can you find the maintenance manual for the turbine?'.

# AVEVA CONNECT Visualization Services

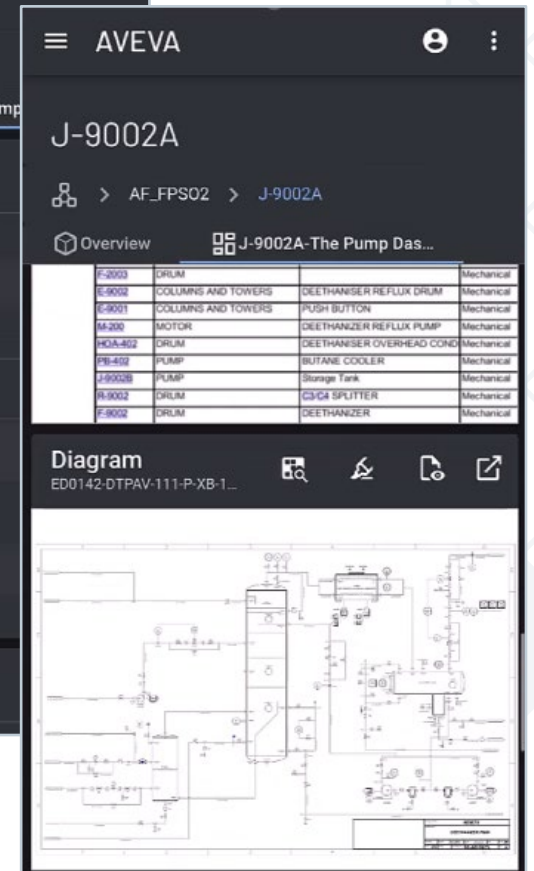
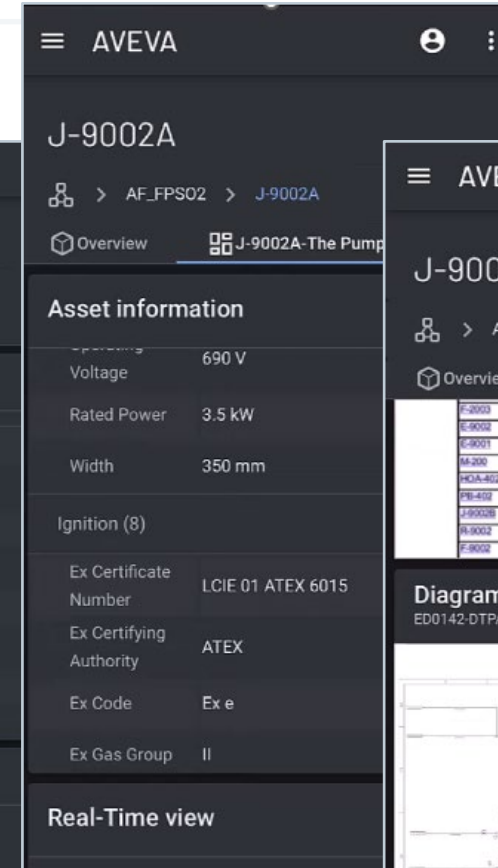
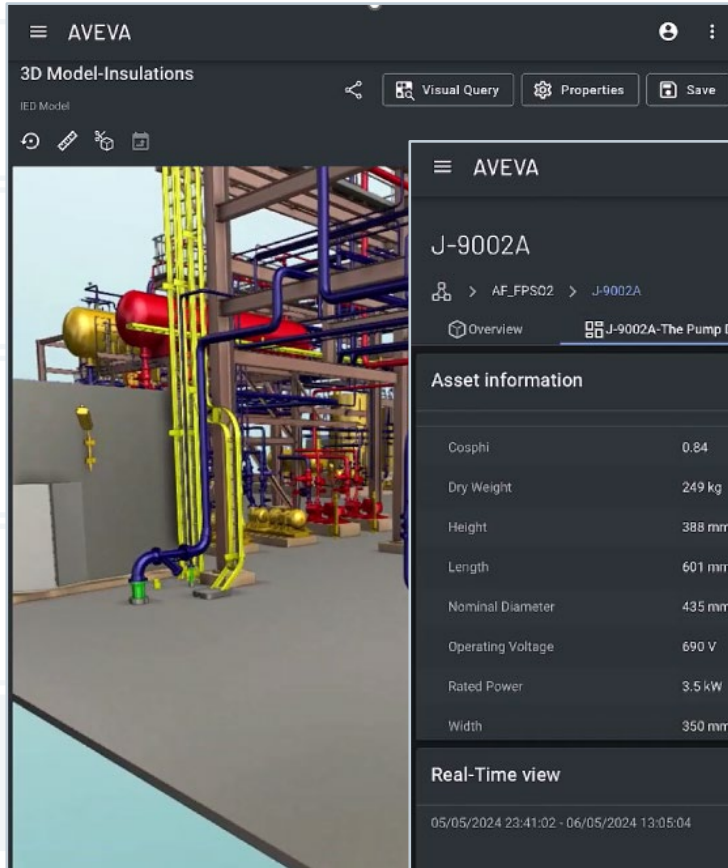
Tighter integration

Business need focus

Self dashboarding

AI assistance

Mobility



# CONNECT Visualization Services

Tighter integration

Business need focus

Self dashboarding

AI assistance

Mobility

Harmonized / improved search

The image displays three overlapping screenshots of the AVEVA CONNECT Visualization Services interface. The top-left screenshot shows the 'Advanced Facets - Engineering' section with a list of facets including 'Equipment Tags (##)', 'Documents (##)', 'Saved Content (##)', and 'Selected facet (##)'. The top-right screenshot shows a 'Custom filtering - Engineering' table with columns for 'Group', 'And/Or', 'Field Type', 'Operator', 'Value', and 'Prompt'. The bottom screenshot shows a comparison view of four assets: J-9002A (Active), J-9002A/N1 (Inactive), J-9002A/N2 (Inactive), and J-9002A/N3 (Active). Each asset card displays details such as Full ID, Name / Title, Type, Parent, Location, and Alarms.



# Questions?



Please wait for  
the microphone.  
State your name  
and company.

Please remember to...

Navigate to this session in the  
mobile app to complete the survey.

And please visit us on the  
Digital Twin booth in the  
Innovation Zone to learn  
more and see a demo...

# Thank you!



**AVEVA**



# Recommended Sessions

## Transforming to an integrated approach to asset lifecycle management

AVEVA

Wednesday, October 16 @ 09:45

## How to get the value from Real-Time Operational Data in FPSO for maintenance, safety and carbon footprint

Yinson

Wednesday, October 16 @ 10:00

## Engineering Integration Platform

Toyo Engineering Corporation

Wednesday, October 16 @ 10:45

## Aras: Rethinking Digital Thread for Product and Asset Lifecycle Management

Aras

Wednesday, October 16 @ 10:45

## Capital project synergy: EPCs and OOs in the energy transition

Engineering Roundtable Discussion

Thursday, October 17 @ 13:15





This presentation may include predictions, estimates, intentions, beliefs and other statements that are or may be construed as being forward-looking. While these forward-looking statements represent our current judgment on what the future holds, they are subject to risks and uncertainties that could result in actual outcomes differing materially from those projected in these statements. No statement contained herein constitutes a commitment by AVEVA to perform any particular action or to deliver any particular product or product features. Readers are cautioned not to place undue reliance on these forward-looking statements, which reflect our opinions only as of the date of this presentation.

The Company shall not be obliged to disclose any revision to these forward-looking statements to reflect events or circumstances occurring after the date on which they are made or to reflect the occurrence of future events.

 [linkedin.com/company/aveva](https://www.linkedin.com/company/aveva)

 [@avevagroup](https://twitter.com/avevagroup)

#### ABOUT AVEVA

AVEVA is a world leader in industrial software, providing engineering and operational solutions across multiple industries, including oil and gas, chemical, pharmaceutical, power and utilities, marine, renewables, and food and beverage. Our agnostic and open architecture helps organizations design, build, operate, maintain and optimize the complete lifecycle of complex industrial assets, from production plants and offshore platforms to manufactured consumer goods.

Over 20,000 enterprises in over 100 countries rely on AVEVA to help them deliver life's essentials: safe and reliable energy, food, medicines, infrastructure and more. By connecting people with trusted information and AI-enriched insights, AVEVA enables teams to engineer efficiently and optimize operations, driving growth and sustainability.

Named as one of the world's most innovative companies, AVEVA supports customers with open solutions and the expertise of more than 6,400 employees, 5,000 partners and 5,700 certified developers. The company is headquartered in Cambridge, UK.

Learn more at [www.aveva.com](https://www.aveva.com)