



AVEVAWORLD

AVEVAWORLD

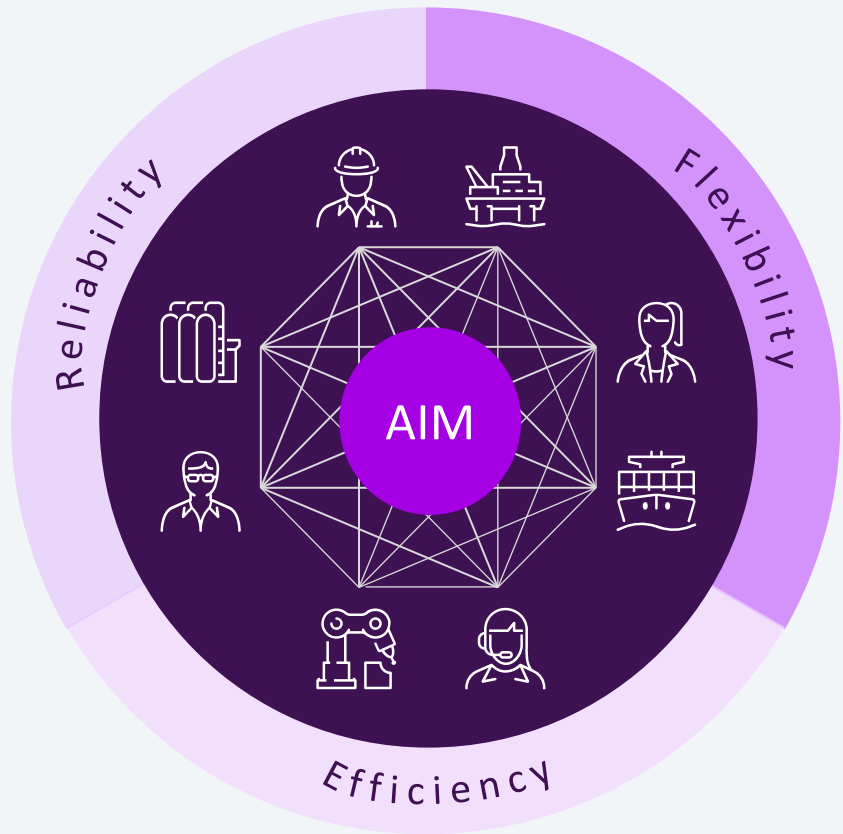
APRIL 9, 2025

AVEVA™ Asset Information Management roadmap

Chris Cran, Product Director, AVEVA

AVEVA

Your data platform for asset and engineering information



Data aggregation

Single source of truth

Consolidate all your data into one accessible platform, ensuring quick and reliable access to information



Data harmonization

Compliance and quality

Align with your standards and regulations, providing validated and high-quality data



Data in context

Informed decision-making

Facilitates rapid decision-making by providing trusted information in context



Data sharing

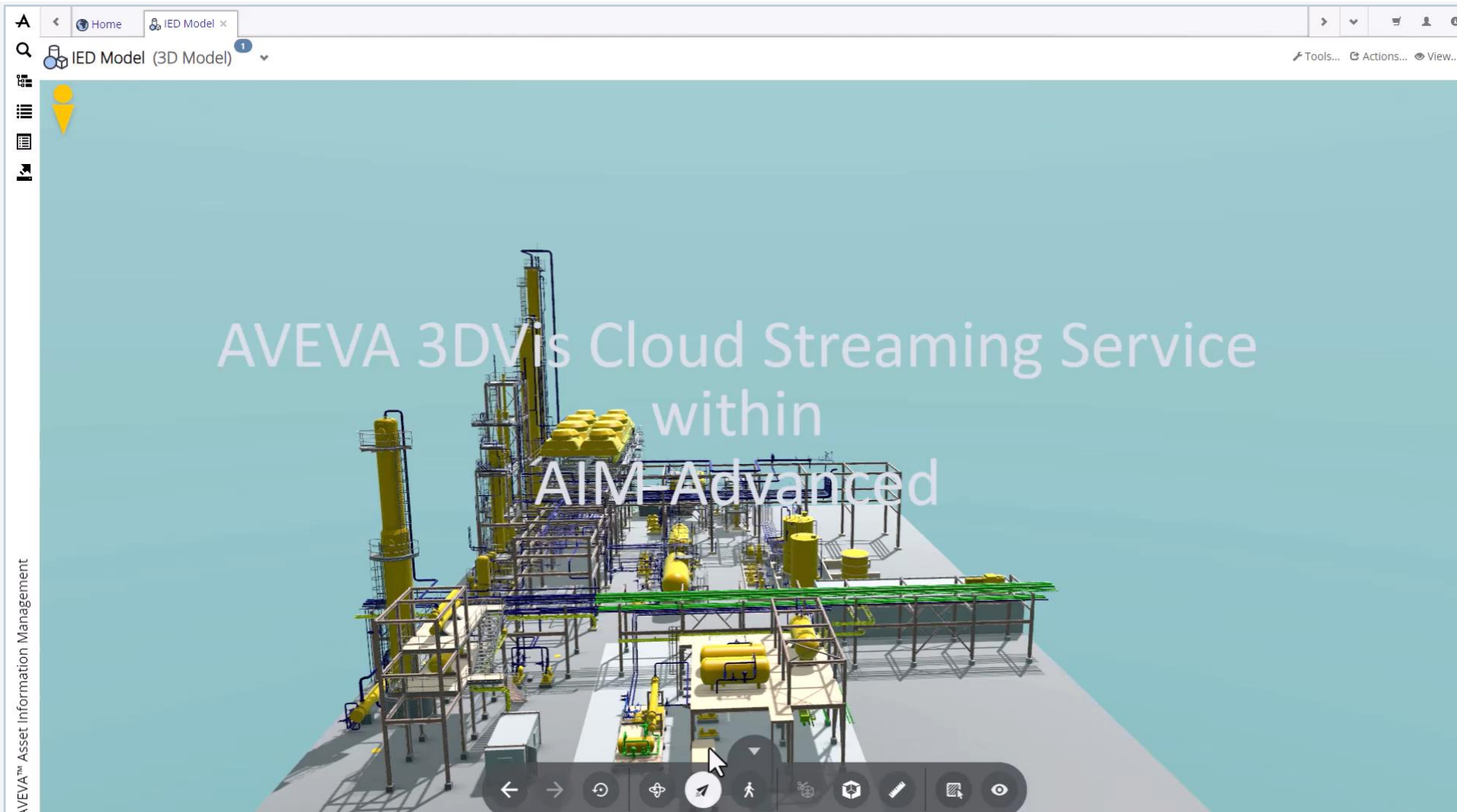
Seamless collaboration

Share data effortlessly through a common platform, accelerating handover processes and operational readiness

2024 features and achievements



3D Visualization



Multi-tenant,
scalable cloud
rendering

Enhanced 3D
canvas
capabilities

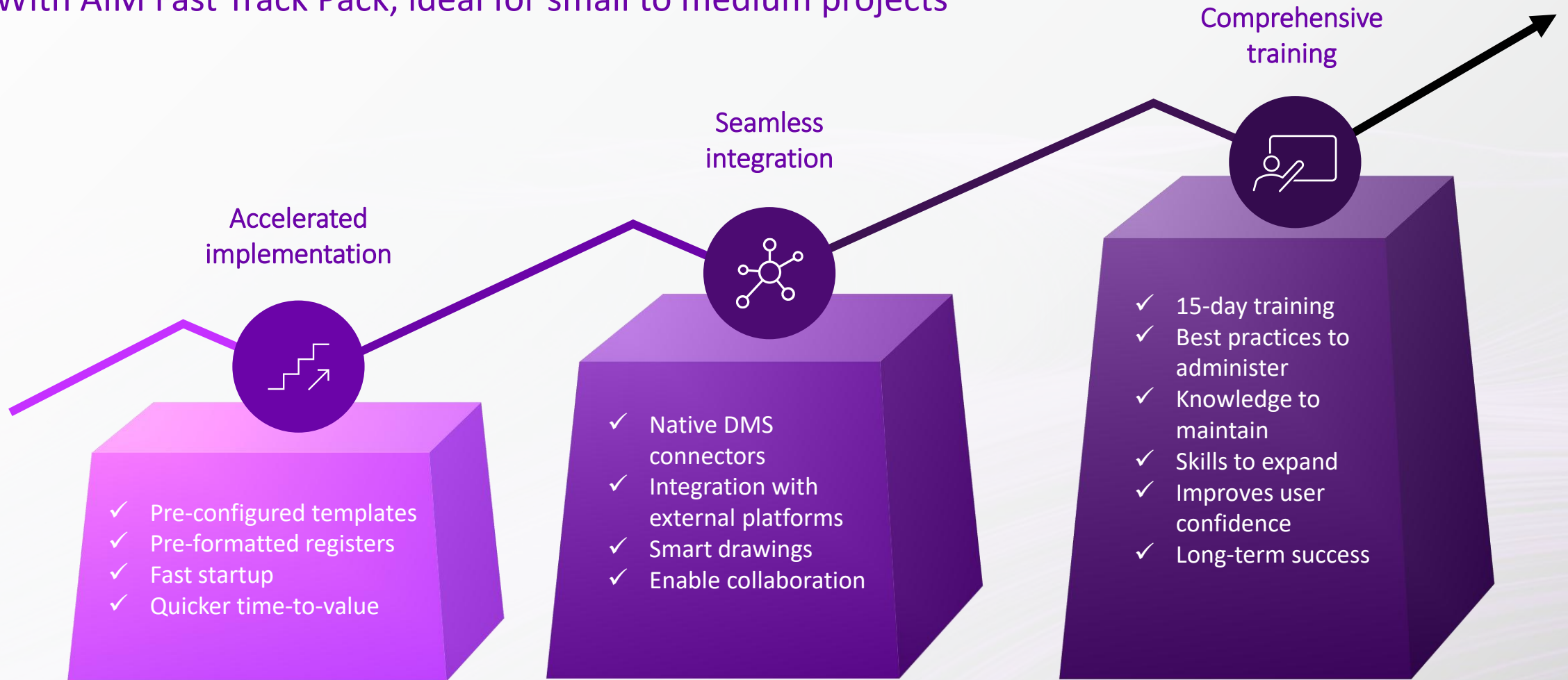
New features
fly/walk, teleport

Future-ready
features

On-premises
3DVis in
development

Achieve your AIM digital twin in just two months

With AIM Fast Track Pack, ideal for small to medium projects



Strategic pillars moving forward

Maximizing values from digital transformation

Full SaaS transition



- **Efficient data processing:** improved pipeline handling and cloud 2D/3D data management
- **Seamless integration:** direct data transfer between AIM and ISM, and enhancement of task orchestration and PCM integration

Scalability



- **Multi-portals management:** efficient handling of multiple portals
- **API improvement:** enhanced data transfer to external system

Ease of maintenance



- **Gateway rationalization:** simplified management and shareable configurations
- **Admin dashboard:** comprehensive support for operational tasks and configuration
- **AIM fast track pack:** quick deployment within 2 months

User experience



- **Modern UI:** flexible and user-friendly interface
- **AI assistance:** intelligent insights leveraging integrated operations data
- **3D visualization:** advanced capabilities and on-premises support
- **Faceted search:** improved search functionalities



COMING UP

Moving to industrial platform

CONNECT

Industrial intelligence platform



A single interface to manage cloud and on-premises applications



Aggregate, contextualize, and share real-time industrial data



Visualize industrial data simply, in a way that is easy to understand



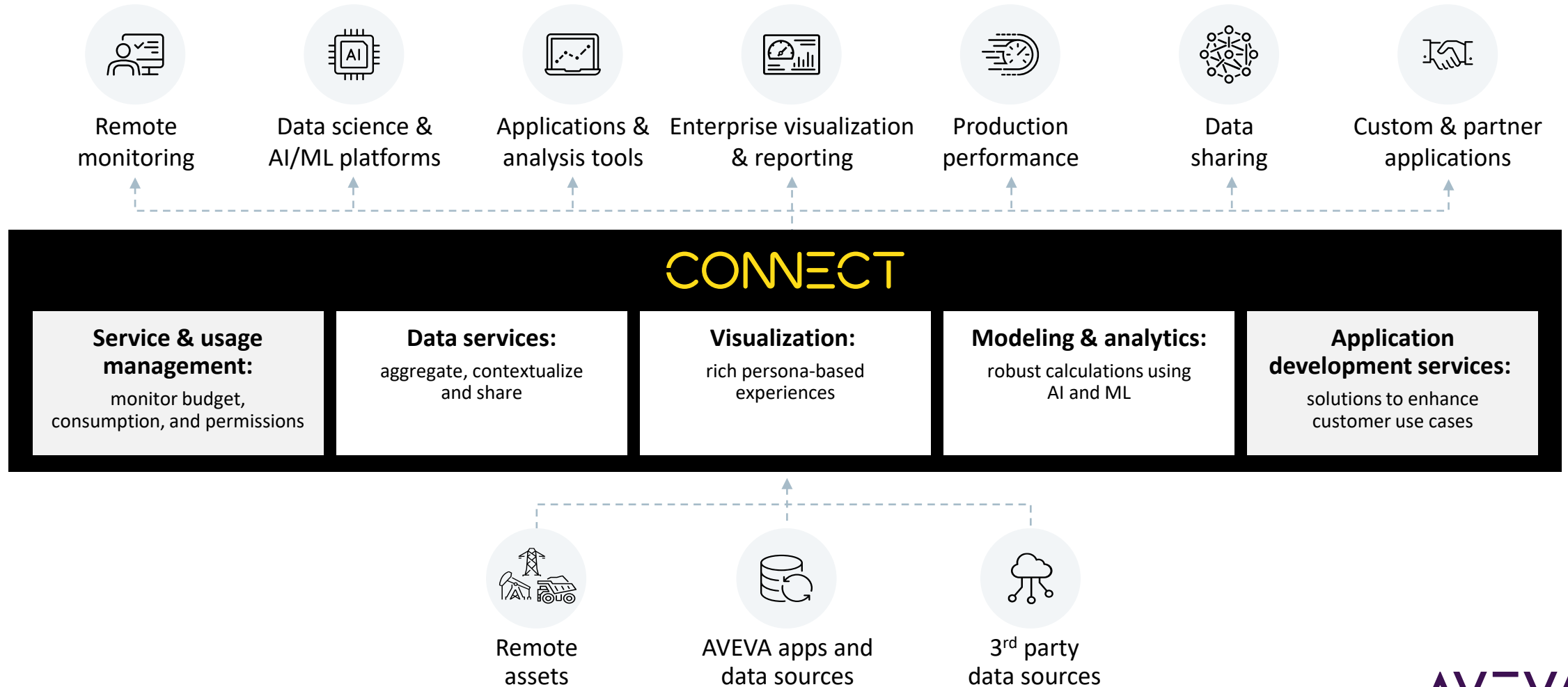
Combine existing data with AI for faster and smarter decisions



Expand your ecosystem with solutions that bring added value

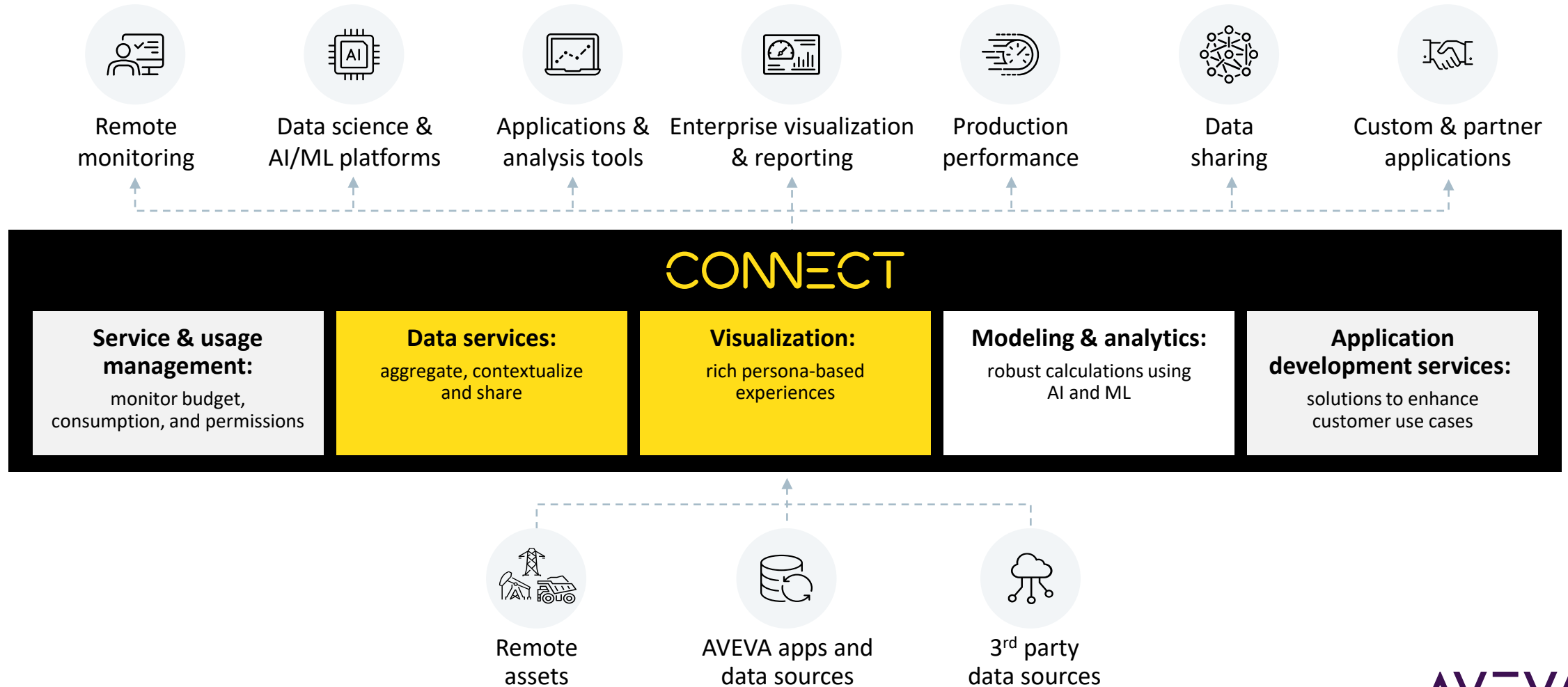
CONNECT, our industrial intelligence platform

Open and neutral, providing rich data insights for your unified industrial ecosystem



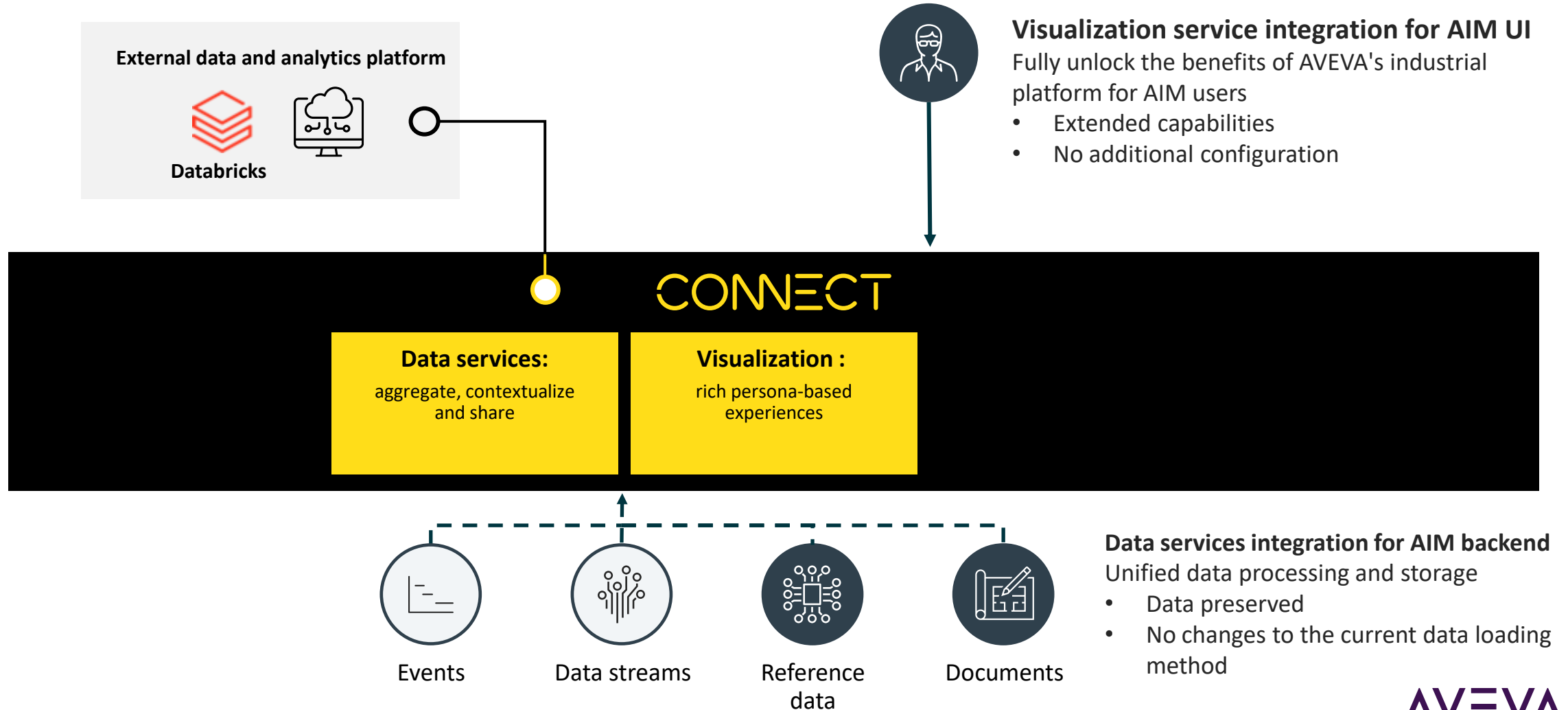
CONNECT, our industrial intelligence platform

Open and neutral, providing rich data insights for your unified industrial ecosystem



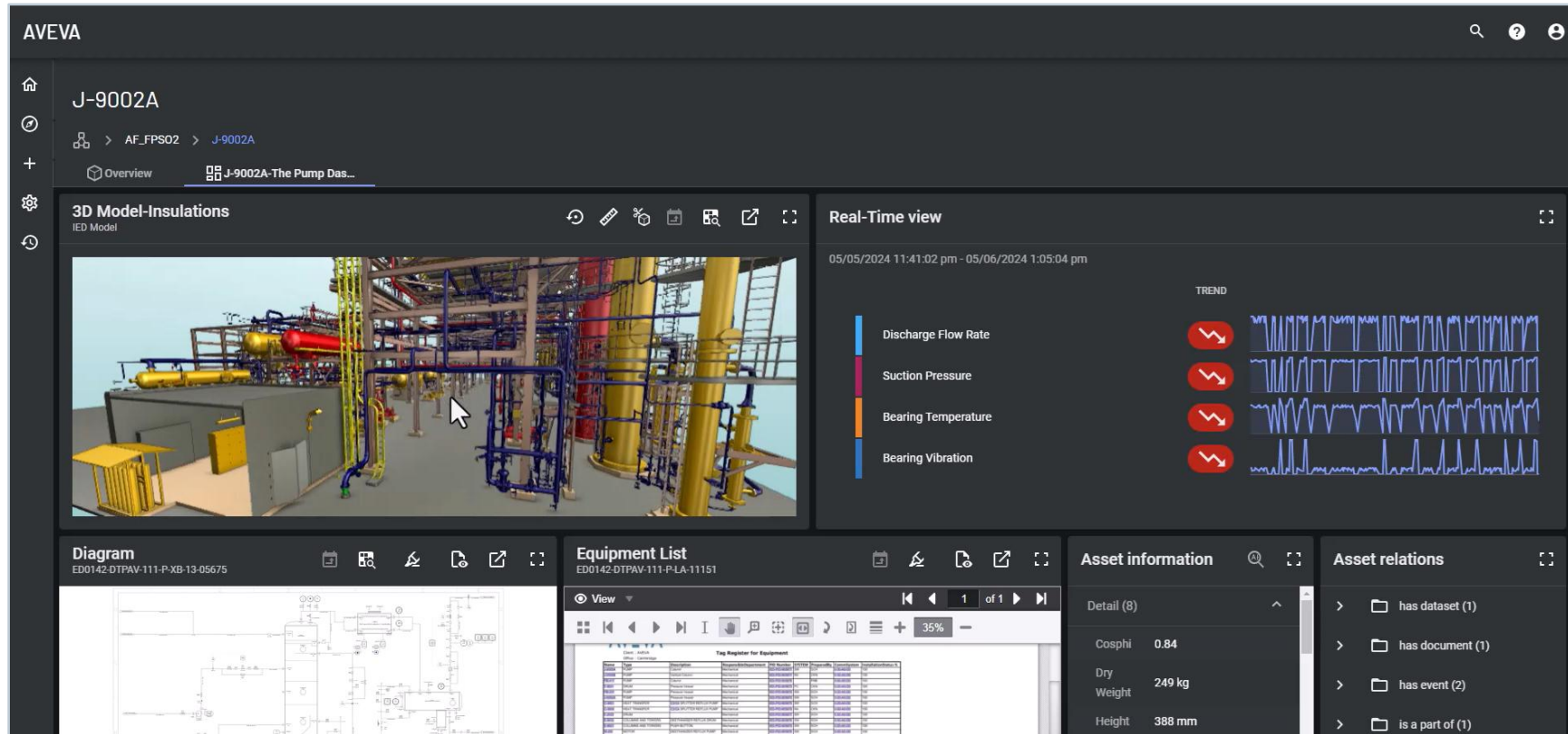
Leverage your existing investment and increase value

Unlocking efficiency and full potential



Integrated industrial platform

Benefits of transitioning AIM to CVS user interface



Tighter integration

Role-based user views

Customizable dashboards

Leverages AI assistance

Harmonized/improved search experience

Full mobile support

AVEVA

Integrated industrial platform

Benefits of transitioning AIM to CVS user interface



Tighter integration

Role-based user views

Customizable dashboards

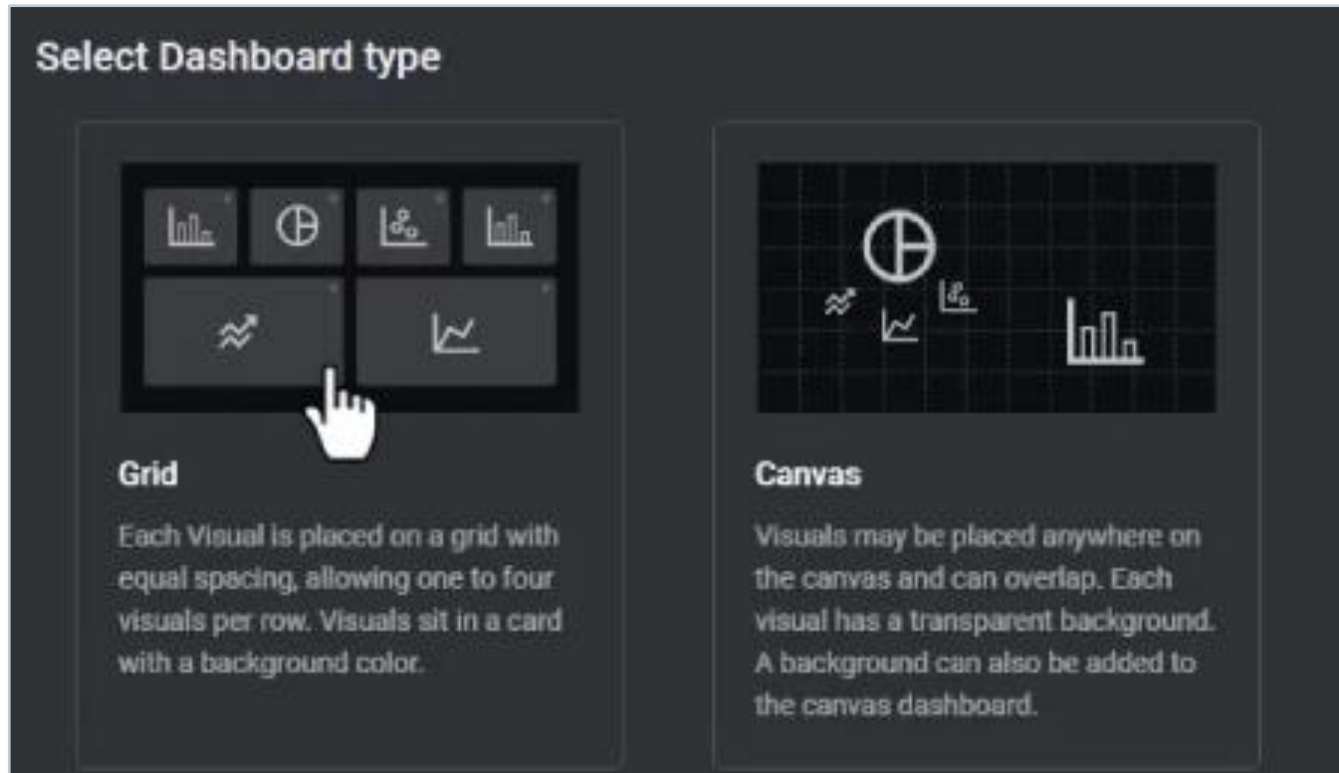
Leverages AI assistance

Harmonized/improved search experience

Full mobile support

Integrated industrial platform

Benefits of transitioning AIM to CVS user interface



Tighter integration

Role-based user views

Customizable dashboards

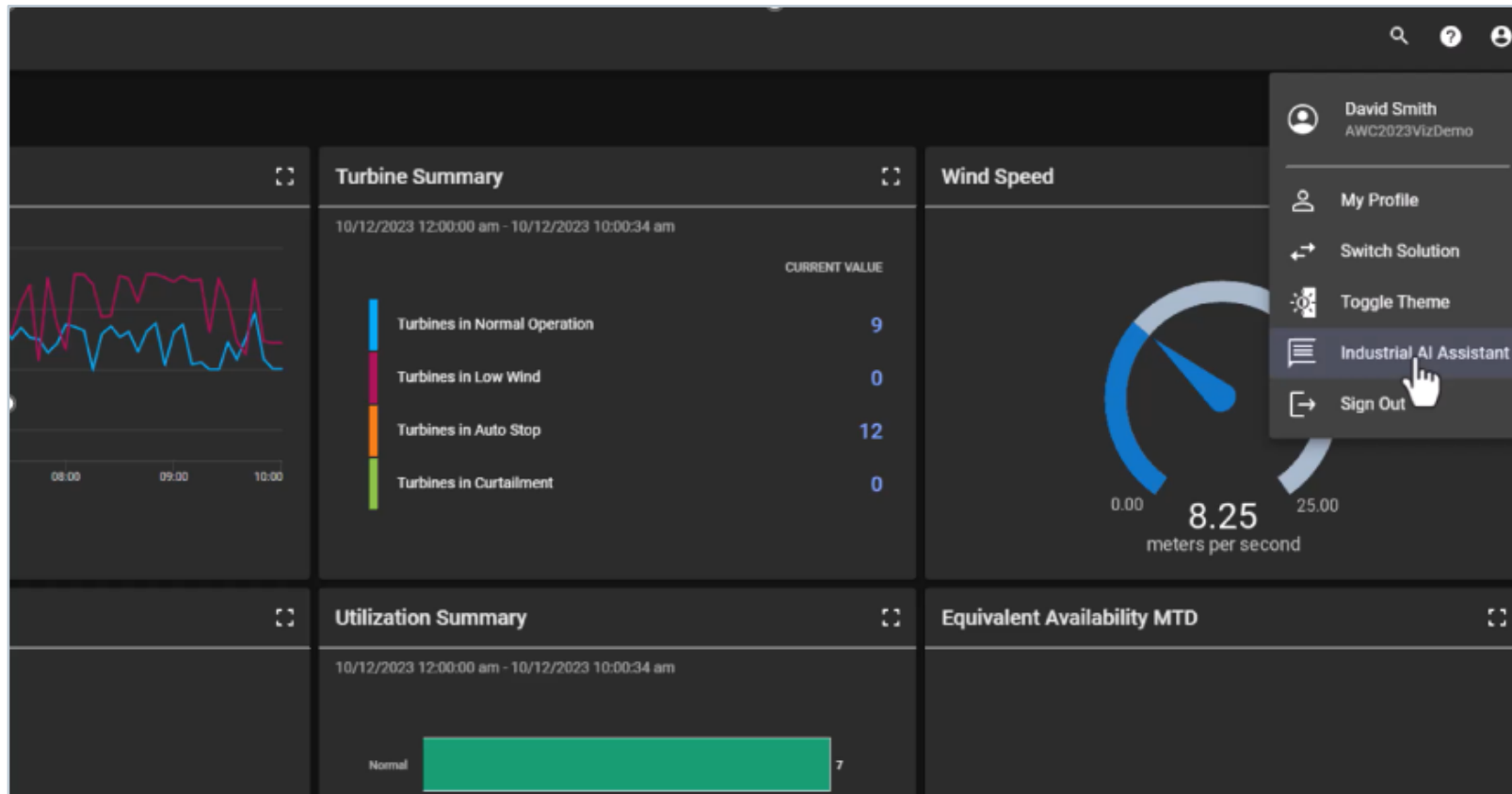
Leverages AI assistance

Harmonized/improved search experience

Full mobile support

Integrated industrial platform

Benefits of transitioning AIM to CVS user interface



Tighter integration

Role-based user views

Customizable dashboards

Leverages AI assistance

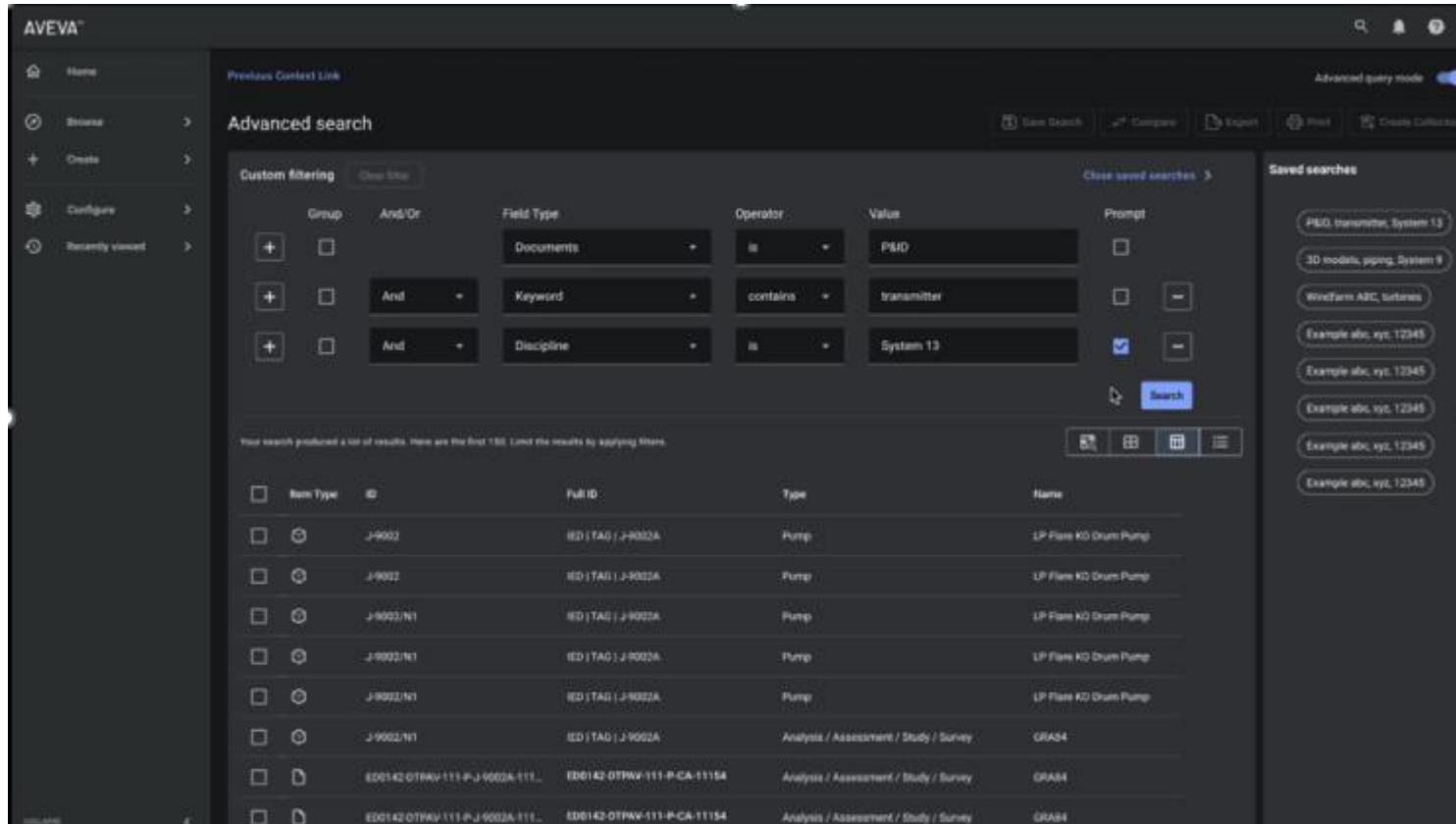
Harmonized/improved search experience

Full mobile support

AVEVA

Integrated industrial platform

Benefits of transitioning AIM to CVS user interface



Tighter integration

Role-based user views

Customizable dashboards

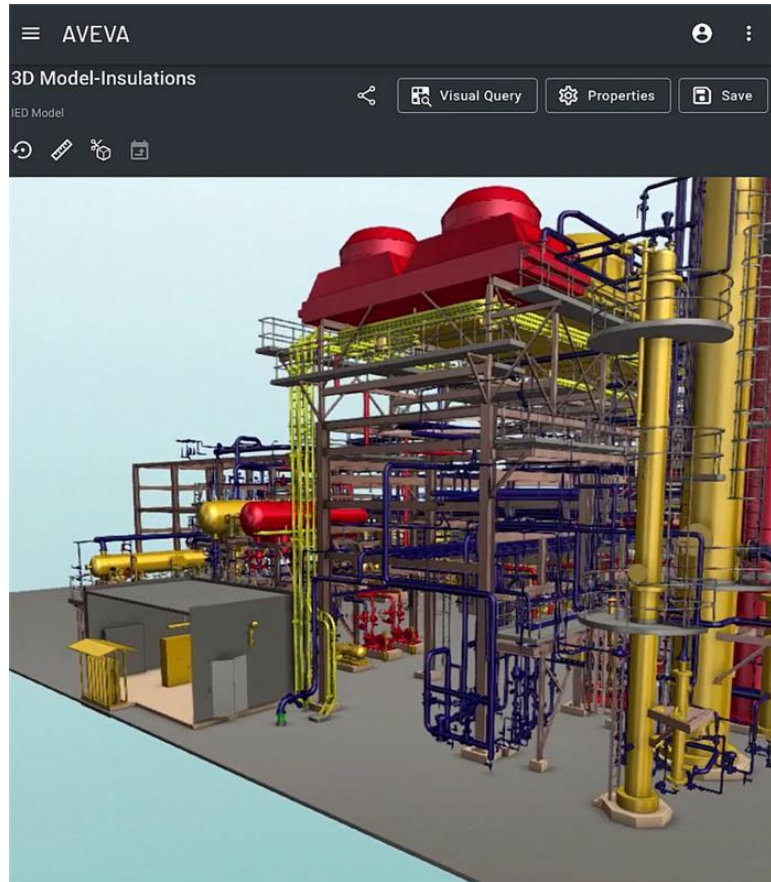
Leverages AI assistance

Harmonized/improved
search experience

Full mobile support

Integrated industrial platform

Benefits of transitioning AIM to CVS user interface



Asset information	
Cosphi	0.84
Dry Weight	249 kg
Height	388 mm
Length	601 mm
Nominal Diameter	435 mm
Operating Voltage	690 V
Rated Power	3.5 kW
Width	350 mm

Tighter integration

Role-based user views

Customizable dashboards

Leverages AI assistance

Harmonized/improved
search experience

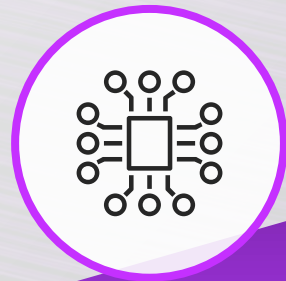
Full mobile support

Digital Twin is a journey

We'll take you there



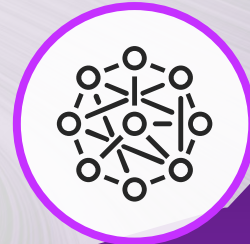
Data collection



Data standardization



Data
contextualization



Data validation



Maximize ROI by
addressing
incremental
business needs

Recommended sessions

Transforming data into results: The Forzy AIM experience

Wednesday, 9th April 2025 @ 4:00 PM

Room 2000

Engineering and capital projects improvements – Community session

Thursday, 10th April 2025 @ 10:00 PM

Room 2009/2011



Visit us!

Stop by these booths in the innovation zone for demos and additional information:

Bridge engineering and operations with trusted data - Booth 45

Manifesting the Digital Twin – Booth 62



Questions?



Please wait for the microphone.
State your name and company.

Please remember to...

Navigate to this session in the
mobile app to complete the survey.

Thank you!



This presentation may include predictions, estimates, intentions, beliefs and other statements that are or may be construed as being forward-looking. While these forward-looking statements represent our current judgment on what the future holds, they are subject to risks and uncertainties that could result in actual outcomes differing materially from those projected in these statements. No statement contained herein constitutes a commitment by AVEVA to perform any particular action or to deliver any particular product or product features. Readers are cautioned not to place undue reliance on these forward-looking statements, which reflect our opinions only as of the date of this presentation.

The Company shall not be obliged to disclose any revision to these forward-looking statements to reflect events or circumstances occurring after the date on which they are made or to reflect the occurrence of future events.

 [linkedin.com/company/aveva](https://www.linkedin.com/company/aveva)

 [@avevagroup](https://twitter.com/avevagroup)

ABOUT AVEVA

AVEVA is a world leader in industrial software, providing engineering and operational solutions across multiple industries, including oil and gas, chemical, pharmaceutical, power and utilities, marine, renewables, and food and beverage. Our agnostic and open architecture helps organizations design, build, operate, maintain and optimize the complete lifecycle of complex industrial assets, from production plants and offshore platforms to manufactured consumer goods.

Over 20,000 enterprises in over 100 countries rely on AVEVA to help them deliver life's essentials: safe and reliable energy, food, medicines, infrastructure and more. By connecting people with trusted information and AI-enriched insights, AVEVA enables teams to engineer efficiently and optimize operations, driving growth and sustainability.

Named as one of the world's most innovative companies, AVEVA supports customers with open solutions and the expertise of more than 6,400 employees, 5,000 partners and 5,700 certified developers. The company is headquartered in Cambridge, UK.

Learn more at www.aveva.com