



AVEVAWORLD

AVEVAWORLD

APRIL 8, 2025

---

# Visualizing your operations data with AVEVA™ PI Vision™

Amit Dutta, Senior Product Manager, AVEVA

AVEVA

# Amit Dutta

Senior Product Manager

**AVEVA**

Amit.Dutta@aveva.com





AVEVA WORLD 2025

---

# Agenda

Visualizing your operations data  
with AVEVA PI Vision

Moscone West Center  
San Francisco

Product vision and goals

PI Vision overview

Roadmap overview

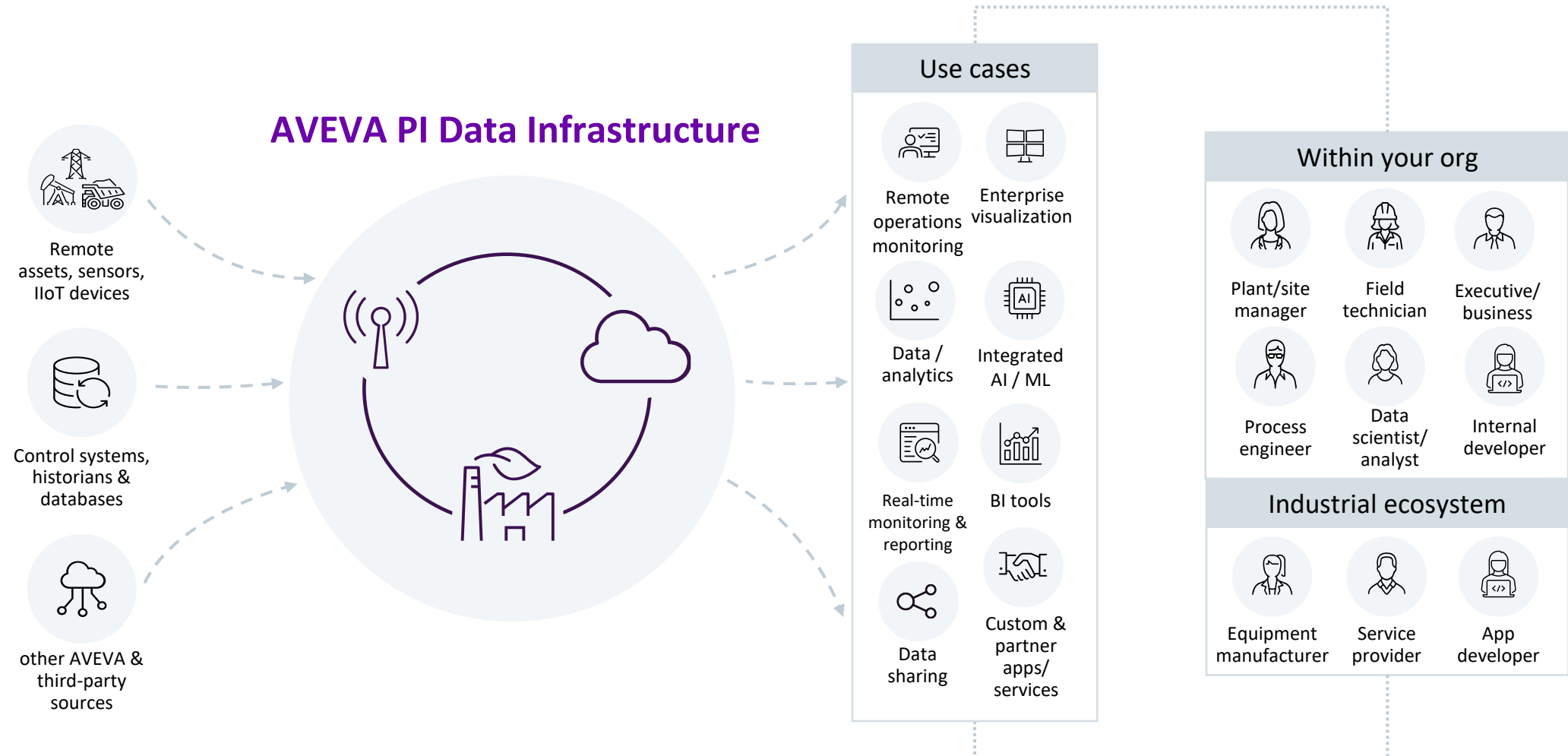
Recent releases

PI Vision 2025 preview

Next steps

# Hybrid data infrastructure

From edge to plant to community

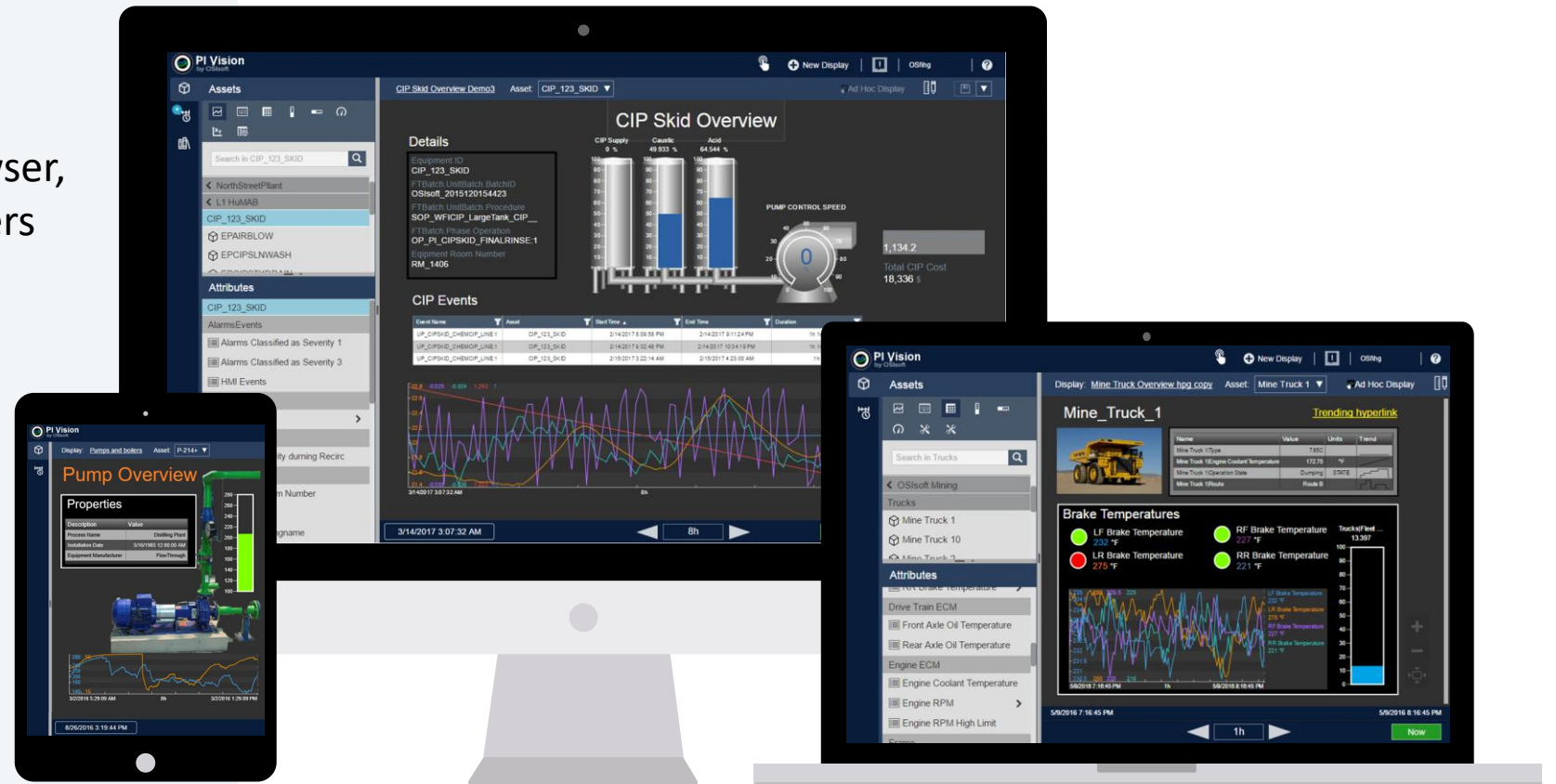




# AVEVA PI Vision

The fastest, easiest way to visualize AVEVA PI Server data

- An **easy to use, self-service, scalable** solution
- Access data from any web browser, including **mobile** device browsers
- **Organize and share** displays across your organization



# Gain visibility into operations

## Operations data visualization outcomes for industrial organizations



### Rapid response

University of Maryland reduced electrical outage response times from up to 90 minutes to **almost instantaneous**

University of Maryland, College Park



### Collaboration

Algoma Steel users built over **1,500 displays** to provide deeper insights shared across departments

Algoma Steel

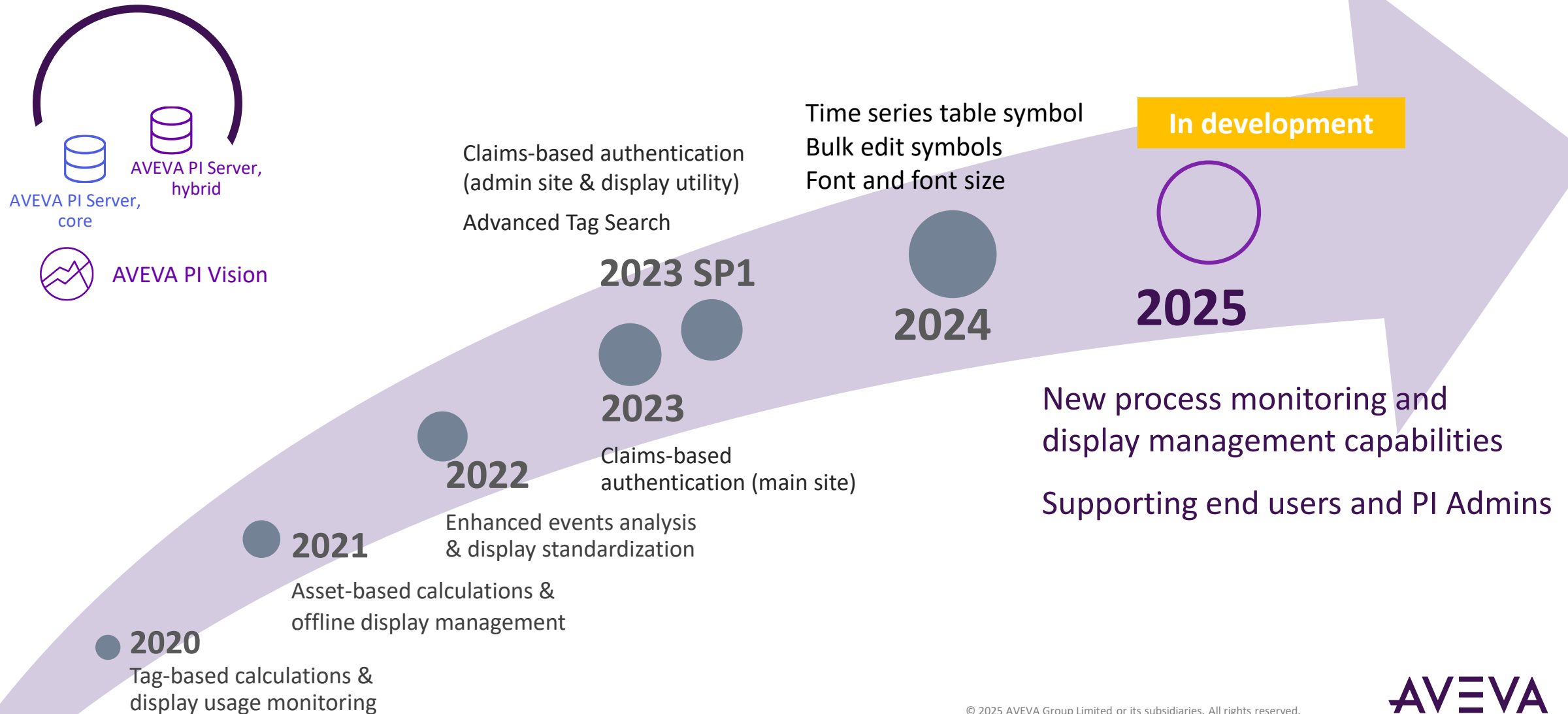


### Self-service

One user at ADM visualized over 550 assets' data in one display in **less than 10 minutes**

ADM

# Powerful capabilities delivered over time



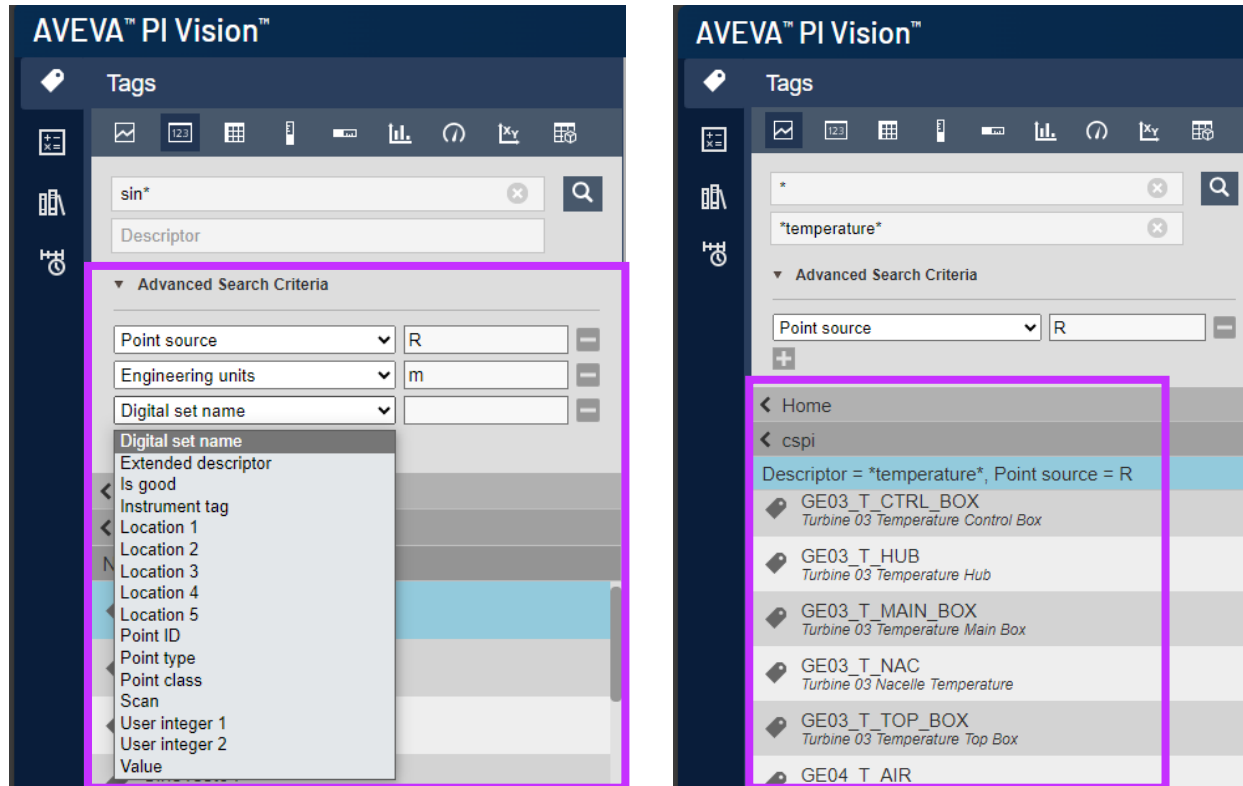


# Advanced tag search in AVEVA PI Vision 2023 SP1



Streamline finding the right tags with advanced search features

Released Jan 2024



## Features

- Filter by multiple tag attributes at the same time
- Select operator symbols for filtering on a relevant attribute
- View description alongside tag name in tag search results
- View current tag value and timestamp on hover in search results

## Benefits

- Streamline finding the right tags, even when tag names lack standard conventions, mismatch the source system, or have similarities with other tags
- Quickly narrow and interpret tag search results
- Easily differentiate between recent tags and similar archived tags

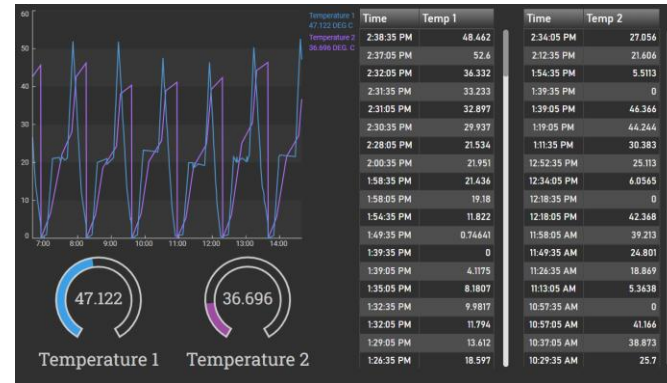
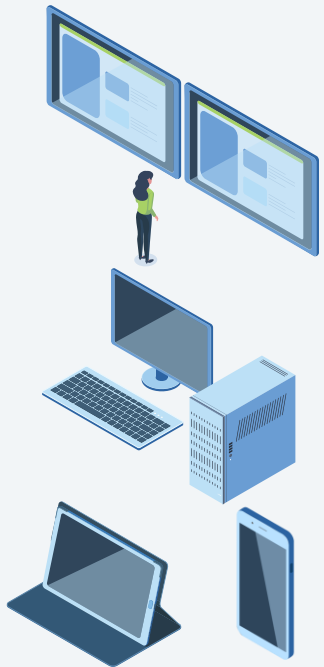
# AVEVA PI Vision 2024 overview



## Addressing critical visualization needs

Released Nov 2024

Ensure a better overall end-user experience.



Time	Temperature	Time	Level
4/18/2024 2:14:35 PM	184.19 DEG. C	11:58 PM	31.332
4/18/2024 2:09:05 PM	182.03 DEG. C	11:49 PM	40.644
4/18/2024 2:02:05 PM	176.14 DEG. C	11:37 PM	43.119
4/18/2024 1:52:35 PM	176.37 DEG. C	11:17 PM	22.594
4/18/2024 1:47:35 PM	174.18 DEG. C	11:09 PM	21.571
4/18/2024 1:45:05 PM	169.46 DEG. C	10:58 PM	0.38098
4/18/2024 1:40:35 PM	170.23 DEG. C	10:48 PM	0
4/18/2024 1:36:35 PM	169.96 DEG. C	10:39 PM	11.156
4/18/2024 1:34:05 PM	168.86 DEG. C	10:34 PM	28.967
4/18/2024 1:24:35 PM	170.76 DEG. C	10:26 PM	39.51
4/18/2024 1:21:35 PM	163.74 DEG. C	10:14 PM	41.305
4/18/2024 1:16:05 PM	163.8 DEG. C	9:57 PM	25.202
4/18/2024 1:07:35 PM	171.86 DEG. C	9:48 PM	23.864
4/18/2024 1:03:05 PM	172.79 DEG. C	9:37 PM	1.6205

## Feature highlights

- New time-series table symbol
- Configurable font and font size on all AVEVA PI Vision symbols
- Ability to bulk edit multiple symbols on a display
- Improved display sorting and tabular view of displays
- Granular folder and display permissions
- Additional multi-state capabilities

Addressing 20+ enhancements requests from the AVEVA™ PI System™ Feedback Portal, spanning 2500+ votes

# View recorded values from AVEVA PI Server

## New time-series table symbol

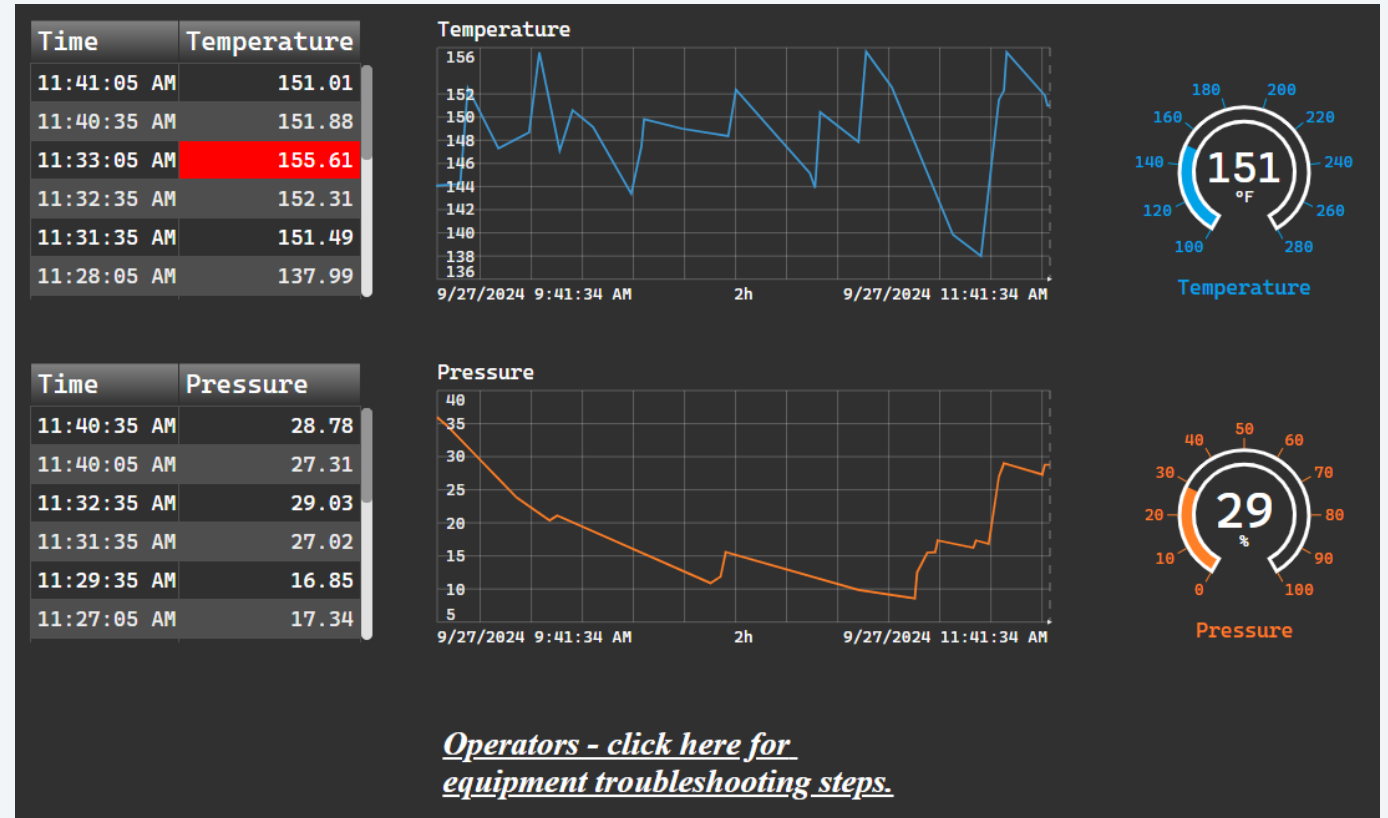
- View recorded PI tag values and timestamps over a specified time range
- Can be configured to show fixed number of values
- Supports multi-state configuration

Time	Temperature
10:14:05 AM	82.5
10:13:35 AM	84.8
10:09:35 AM	84.3
10:08:35 AM	91.0
10:07:35 AM	92.6
10:04:35 AM	92.8
9:29:05 AM	82.0
9:19:05 AM	77.2
9:18:35 AM	79.6
9:17:35 AM	81.4
9:17:05 AM	86.7
9:13:35 AM	85.9
8:57:35 AM	78.7

Time	Temperature
4/18/2024 2:14:35 PM	184.19 DEG. C
4/18/2024 2:09:05 PM	182.03 DEG. C
4/18/2024 2:02:05 PM	176.14 DEG. C
4/18/2024 1:52:35 PM	176.37 DEG. C
4/18/2024 1:47:35 PM	174.18 DEG. C
4/18/2024 1:45:05 PM	169.46 DEG. C
4/18/2024 1:40:35 PM	170.23 DEG. C
4/18/2024 1:36:35 PM	169.96 DEG. C
4/18/2024 1:34:05 PM	168.86 DEG. C
4/18/2024 1:24:35 PM	170.76 DEG. C
4/18/2024 1:21:35 PM	163.74 DEG. C
4/18/2024 1:16:05 PM	163.8 DEG. C
4/18/2024 1:07:35 PM	171.86 DEG. C
4/18/2024 1:03:05 PM	172.79 DEG. C

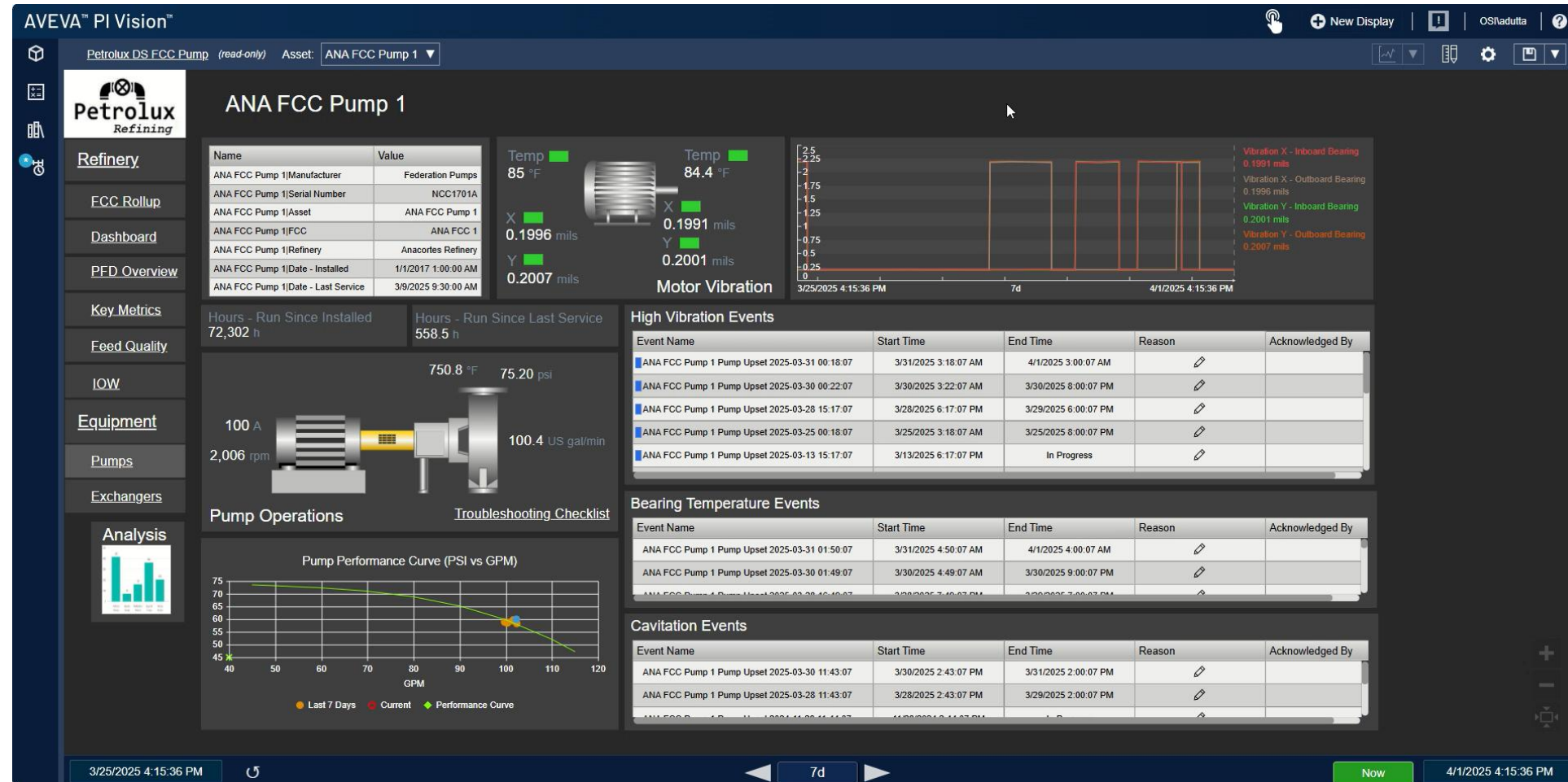
# Increased visibility of symbols and displays

- Font and font size selection available on all symbols
- New rich text editor for the static text symbol
- Display zoom level preserved for each user



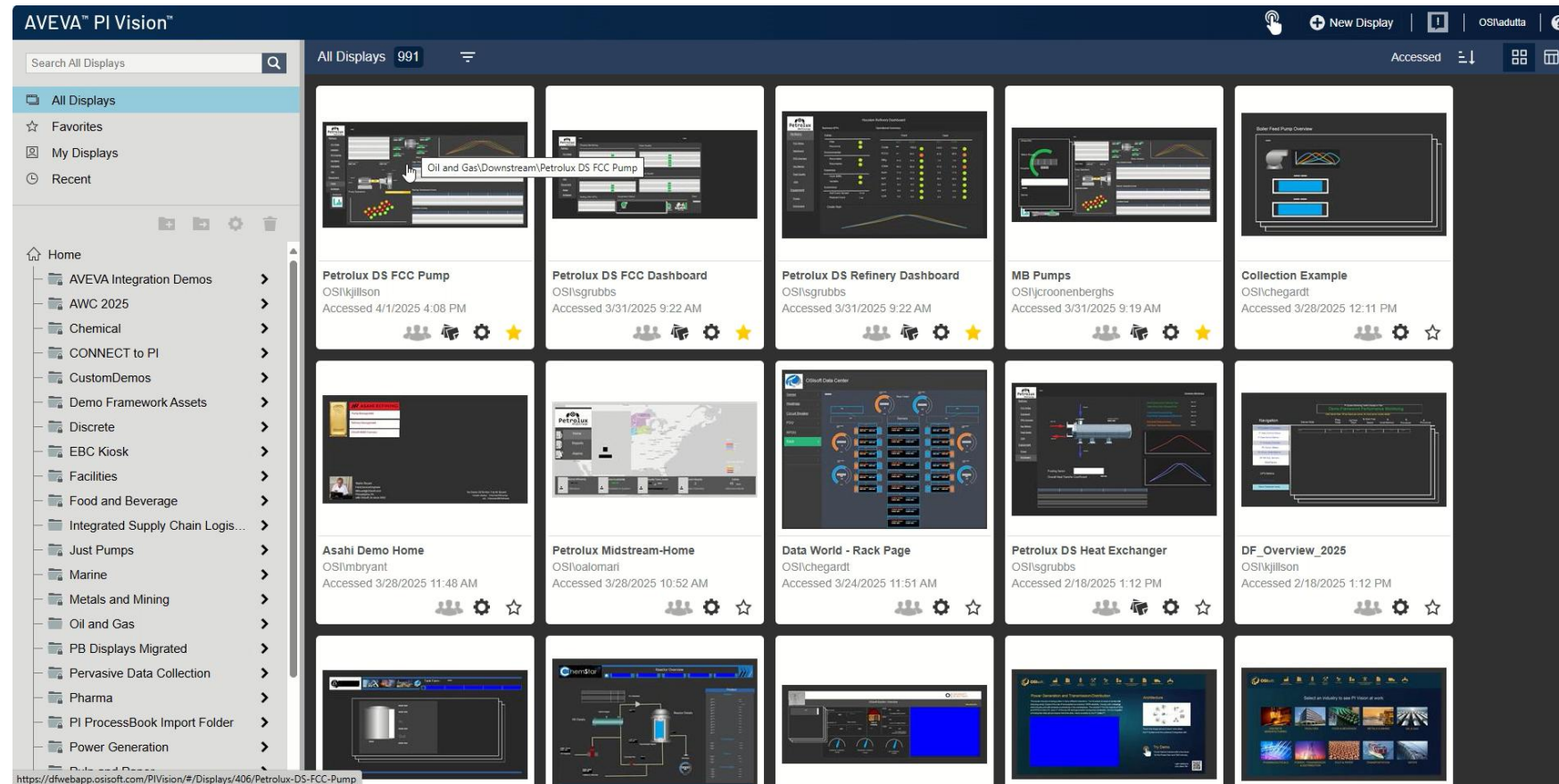
# Bulk edit symbols on a display

- Select multiple symbols on a display and configure them together
- Reduce the time to build complex displays
- Configure symbols to use the same properties



# Home page enhancements and folder permissions

- Sort displays by name, owner, last modified, or last accessed
- Tabular view of displays
- Access AVEVA PI Vision folders directly via URL
- More granular folder and display permissions model





# View connected users

AVEVA™ PI Vision™ Administration

OSI\adutta

Overview

Configuration

Security


Display Defaults

User Settings

Display Management

Reports

Display Sessions

Display Sessions (10)  Last refresh: 09/26/24 11:05:32 AM

ID ↑	Name	User ID	Opened	Updated	First	Latest	Min	Max	Avg	Session ID
-1	New Unsaved Display	OSI\jswartzentru...	09/26/24 10:46:22 AM	913ms ago	471ms	18ms	2ms	5s	193ms	7f58a632-0547-4d33-bdb5-b1a7125c3616
2	SLTC - Asset Displays - AC RTU Displa...	OSI\adutta	09/26/24 11:05:25 AM	2s ago	3s	77ms	77ms	3s	1s	35f101ea-7364-4790-9883-fb3bf30df7d8
6	SLTC - Asset-Displays - Device-View - ...	OSI\eschwamm	09/26/24 10:51:50 AM	3s ago	1s	2ms	2ms	1s	18ms	1fbbfc14-37f7-48e7-abb7-3c60dd2ecfc0
11	SLTC - Energy Management	OSI\avv-croman	09/26/24 10:54:43 AM	2s ago	978ms	151ms	147ms	978ms	174ms	433b05b4-fb82-4da5-ba9e-414a5142b8c8
15	SLTC - Energy Management Overview	OSI\aalisha	09/26/24 10:51:59 AM	913ms ago	152ms	151ms	145ms	323ms	160ms	46c7ca3d-2795-4777-80ae-682558fe965c
26	SLTC - Fault and Site Management - C...	OSI\aalisha	09/26/24 10:52:46 AM	913ms ago	774ms	462ms	437ms	866ms	486ms	a3b0713a-c0d9-435e-b850-23befb452c1b
71	Compressor State Changes	OSI\eschwamm	09/26/24 10:50:50 AM	913ms ago	566ms	2ms	1ms	846ms	93ms	c8610278-c8cb-47e1-8f5f-73524c93716b
82	Wind Farm Overview	OSI\posner	09/26/24 10:48:35 AM	5s ago	455ms	11ms	6ms	455ms	12ms	e3d7c790-8843-4d6e-81e5-084def87f4b0
87	Generator Overview	OSI\jdryden	09/26/24 10:52:21 AM	3s ago	312ms	4ms	4ms	820ms	29ms	830858c0-a7d0-4e00-a41f-674bdbb41818
87	Generator Overview	OSI\jswartzentru...	09/26/24 10:45:23 AM	5s ago	3s	10ms	4ms	3s	43ms	e530345f-81b9-4e22-b02c-fdff289f65a4

© 2025 AVEVA Group Limited or its subsidiaries. All rights reserved.

AVEVA

# AVEVA PI Vision 2025 preview

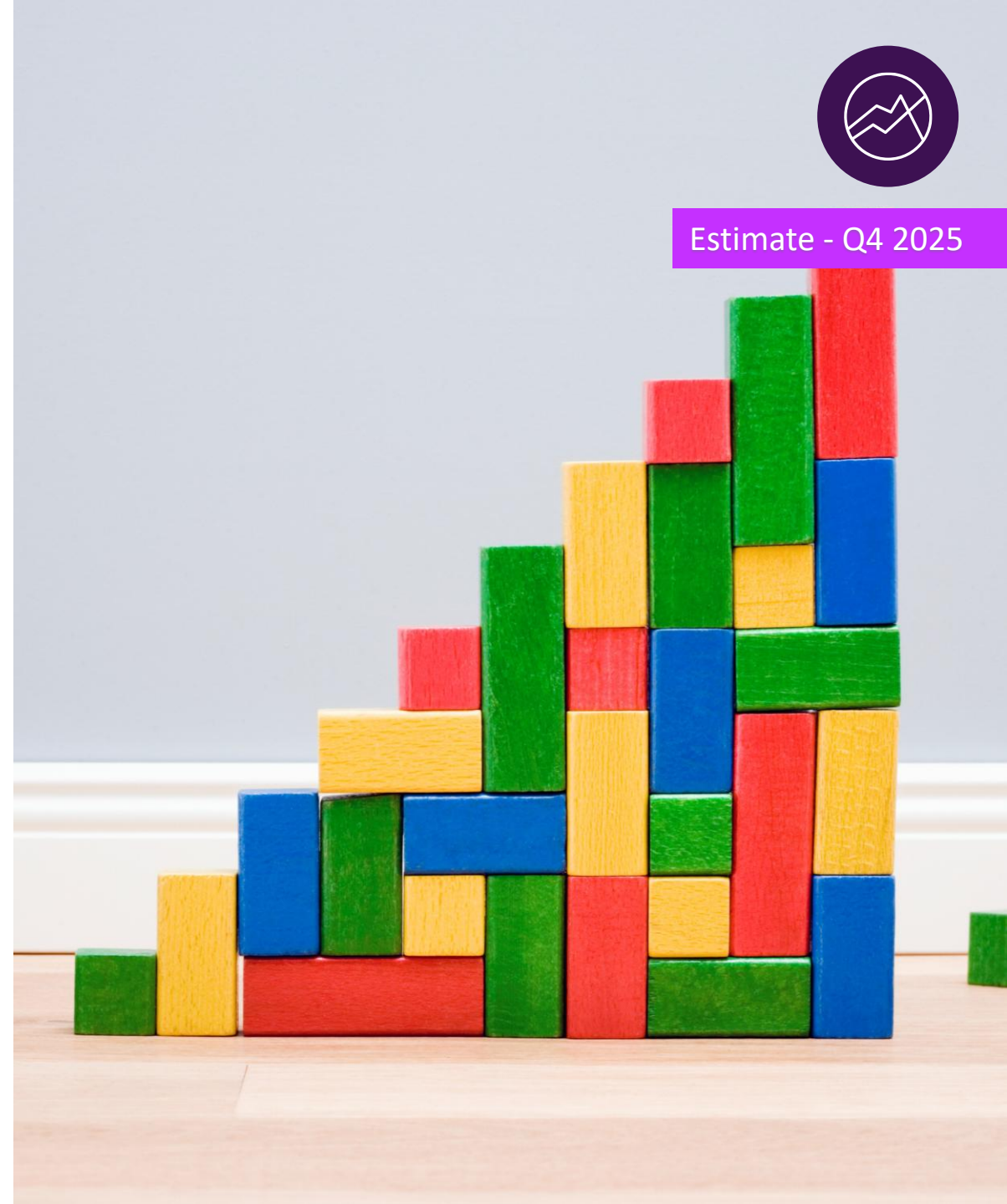
Features planned and in development for the upcoming PI Vision 2025 release

- Cloud SQL support
- Collection sorting enhancements
- Ad hoc workspace improvements
- Tooltip configuration
- Display revisions
- Trend and table symbol enhancements
- ...and much more!

For full details, see the Feedback Portal to stay up to date as enhancement requests update in status.



Estimate - Q4 2025

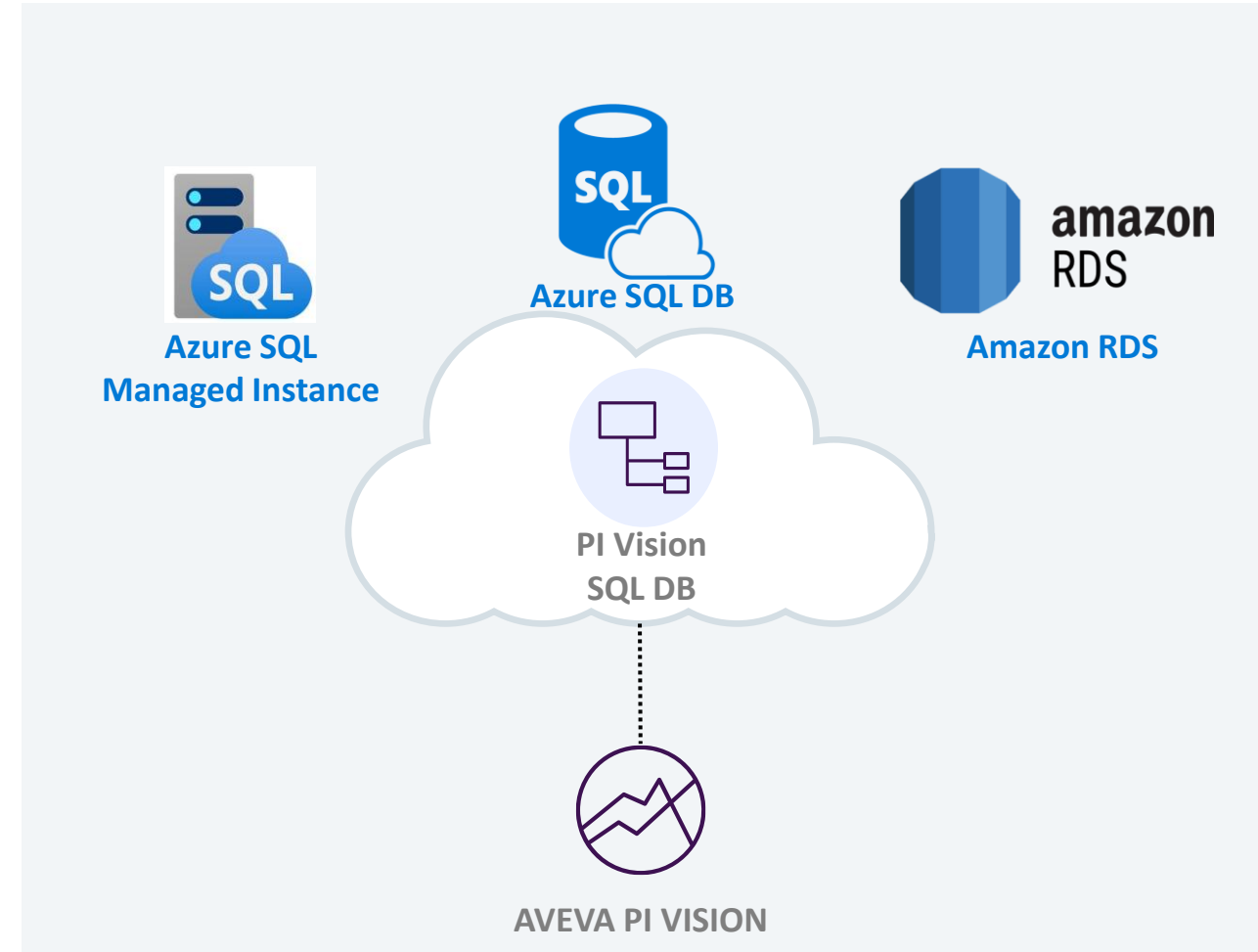


# Hybrid infrastructure options



## Leverage cloud-managed SQL

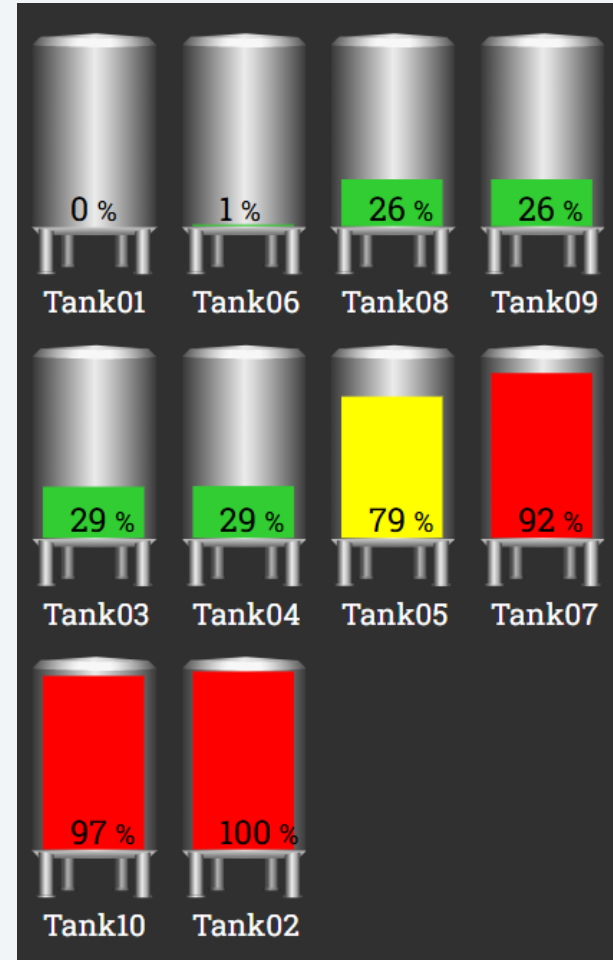
- Cloud-based SQL hosting options from Azure SQL DB to Azure SQL Managed Instance and Amazon Relational Database Service (RDS)
- Standardize SQL workloads on cloud provider of choice
- Decrease admin work so staff can focus on operations data value
- Ease cloud migration and offload SQL admin tasks to Microsoft Azure
- Lower costs from IT overhead and on-demand usage with more automation



# View assets in priority order

## Collections enhancements

- Collections can now be sorted by an attribute value – meaning users can see the most critical assets in order
- Sort on any available attribute from an asset type



Edit Collection Criteria ▾

► Database

CSPI PI Big Tire Co

► Search Root

Montreal

► Asset Name

d

▼ Asset Type

Selected

Asset Type

PressTemplate ▾

Asset Attribute

+

► Asset Category

► Number of Results

16

▼ Asset Order

Ascending

Sort Field

Asset Name ▾

☒ Ascending

☐ Descending

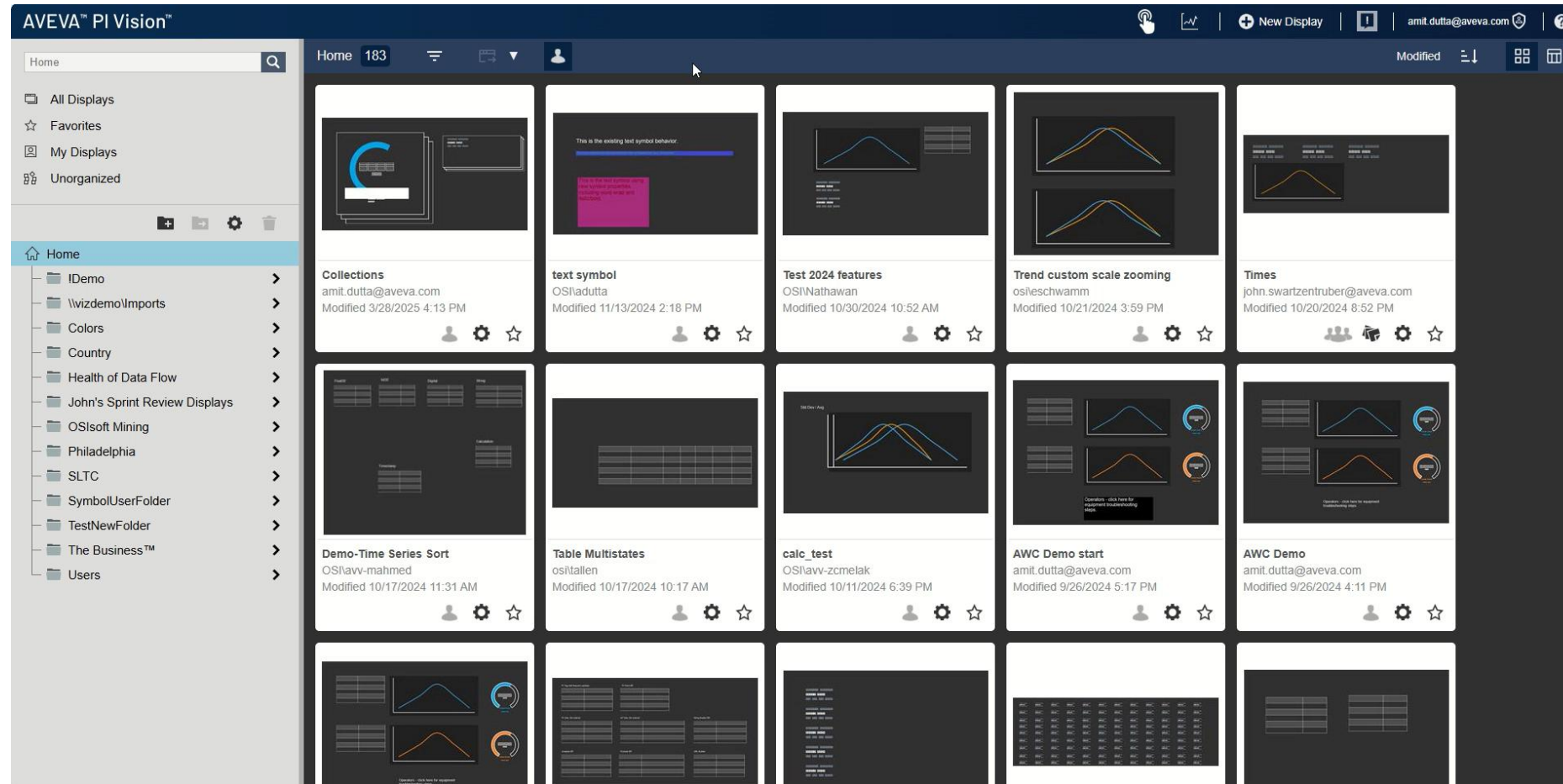
Refresh

# The quickest way to explore your data



## Ad hoc workspace enhancements

- Workspace accessible at an application level means users don't need to open or create a display to view data
- Search pane directly available in the workspace
- URL access allows users to navigate directly to the workspace



# Improve usability of tables



## Table enhancements

- Ability to transpose Asset Comparison Table, making it easier to view many attributes
- Label configuration options on all tables
- Alignment configuration options on all tables

Attribute	HOU.Press.01	HOU.Press.02	HOU.Press.03	HOU.Press.04
Delta Temperature Coeff...	0	0	0	0
Good Tires	0	0	0	0
Internal Temperature	0	0	0	0
Curing Phase	Waiting	Waiting	Waiting	Waiting
Lid Position	Open	Open	Open	Open
Main Clock	78.997	73.024	82.228	71.304
Mold Temperature	39.991	39.697	39.151	38.207
Net Tires Produced	88	102	96	90
OOE Metrics_Availability	43.452	41.886	42.506	50.56
OOE Metrics_OEEScore	18.847	16.275	18.436	23.757
OOE Metrics_Performan...	51.506	47.892	48.795	57.831
OOE Metrics_Quality	84.211	81.132	88.889	81.25
Press Status	Maintenance	Planned Maintenance	Maintenance	Press set-up
Pressure	0	0	0	0
Production Rate	4	5	3	3
Production Rate_GoodN...	48	43	48	52
Production Target	12	12	12	12
Reference Type	F1	Truck	Truck	Truck

Attributes

Current Attributes:

Delta Temperature Coefficient

Good Tires

Internal Temperature

Curing Phase

Lid Position

Main Clock

Mold Temperature

Net Tires Produced

OOE Metrics\_Availability

▲

▼

▲

▼

Modify Attribute List

Alignment

≡

≡

≡

Units

Default

Label

Mold Temp

Show Units

Wrap text



# Curated Home folder experience

## Permission configuration on the home folder

- Control who has read and write permissions to the home folder
- Gives admins the ability to control what displays end users see when they navigate to the home folder
- A new category of unorganized displays that are not parented in a folder or home.



Folder Settings

Name

Home

Permissions

Unassigned AF Identities

Filter Identities

Administrators

Identity	Permission
Engineers	Write
World	Read

Search Unorganized Displays

All Displays

Favorites

My Displays

Unorganized

# YOU shape our roadmap

AVEVA PI System Feedback Portal is your platform to tell us what you want, and we have been listening!

AVEVA PI Vision 2024 includes 20+ new enhancements based on 2500+ votes from AVEVA PI System Feedback Portal.



<https://feedback.aveva.com>

Let us know your product feedback!



AVEVA



# Visit us!

Stop by these booths in the Innovation Zone for demos and additional information:

**Extend value through  
AVEVA PI Data Infrastructure**  
in the CONNECT area

**Transform real-time data into  
actionable information with AVEVA PI Server**  
in the Operate & Optimize area

**Visualize your operations data with  
AVEVA PI Vision**  
in the Operate & Optimize area





# AVEVA PI System sessions

## Fueling your data infrastructure with AVEVA connectivity

Tuesday, April 08 @ 2:00 pm

Room 2005-2007

## Establishing your modern data infrastructure with AVEVA PI Server

Tuesday, April 08 @ 4:30 pm

Room 2001-2003

## Supporting expanding needs with AVEVA PI Vision

Wednesday, April 09 @ 2:30 PM

Room 2000



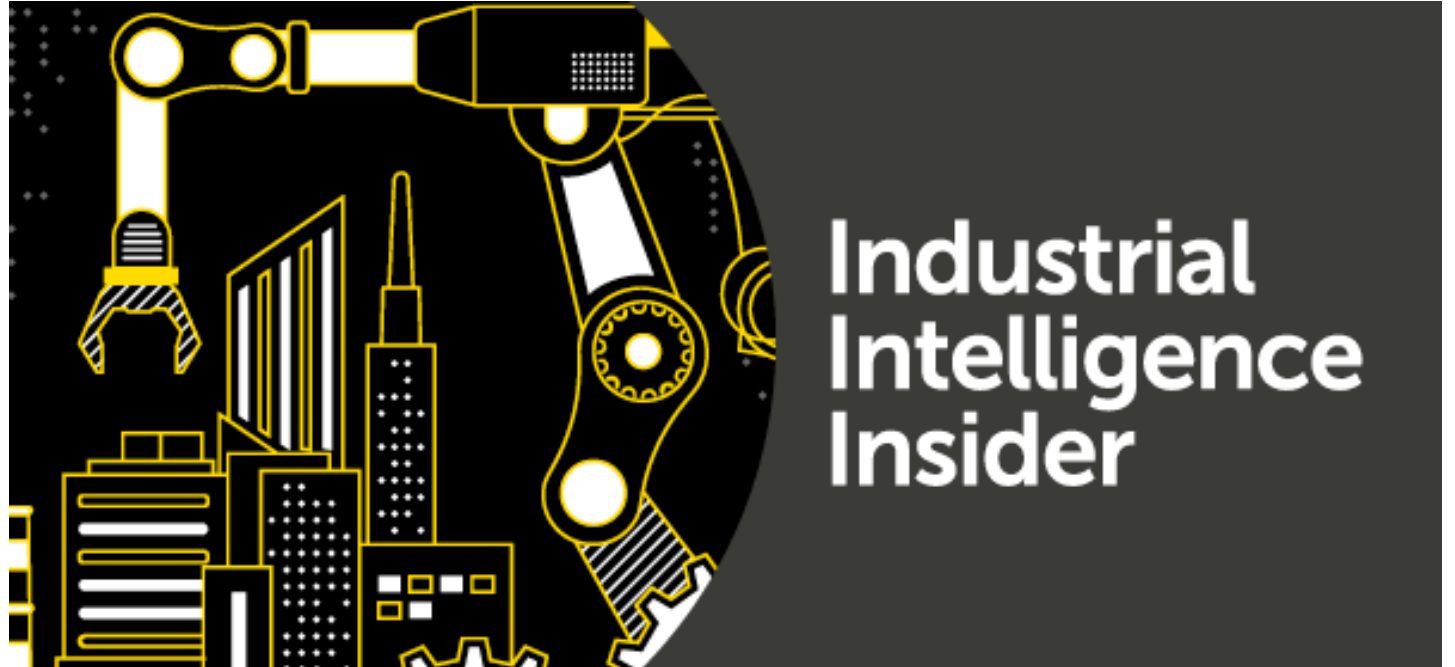
AVEVA

# New! Industrial Intelligence Insider Newsletter

Stay up to date with the latest product news on AVEVA and CONNECT

Each issue includes:

- Key industry insights & trends
- Product release updates
- Event details
- And more!





# Questions?



Please wait for the microphone.  
State your name and company.

## Please remember to...

Navigate to this session in the  
mobile app to complete the survey.

Visit us in the Innovation Zone.

# Thank you!





# Innovation zone

Exciting, modern &  
engaging experience

**5 key zones:** CONNECT, operate &  
optimize, design & build, industrial  
sustainability, experiential zone  
(hands-on activities)

**45+ sponsor and exhibitor booths**

CONNECT ecosystem partner kiosk

Partner solution sessions

Guided tours by industry

Game and leisure areas

This presentation may include predictions, estimates, intentions, beliefs and other statements that are or may be construed as being forward-looking. While these forward-looking statements represent our current judgment on what the future holds, they are subject to risks and uncertainties that could result in actual outcomes differing materially from those projected in these statements. No statement contained herein constitutes a commitment by AVEVA to perform any particular action or to deliver any particular product or product features. Readers are cautioned not to place undue reliance on these forward-looking statements, which reflect our opinions only as of the date of this presentation.

The Company shall not be obliged to disclose any revision to these forward-looking statements to reflect events or circumstances occurring after the date on which they are made or to reflect the occurrence of future events.

 [linkedin.com/company/aveva](https://www.linkedin.com/company/aveva)

 [@avevagroup](https://twitter.com/avevagroup)

#### ABOUT AVEVA

AVEVA is a world leader in industrial software, providing engineering and operational solutions across multiple industries, including oil and gas, chemical, pharmaceutical, power and utilities, marine, renewables, and food and beverage. Our agnostic and open architecture helps organizations design, build, operate, maintain and optimize the complete lifecycle of complex industrial assets, from production plants and offshore platforms to manufactured consumer goods.

Over 20,000 enterprises in over 100 countries rely on AVEVA to help them deliver life's essentials: safe and reliable energy, food, medicines, infrastructure and more. By connecting people with trusted information and AI-enriched insights, AVEVA enables teams to engineer efficiently and optimize operations, driving growth and sustainability.

Named as one of the world's most innovative companies, AVEVA supports customers with open solutions and the expertise of more than 6,400 employees, 5,000 partners and 5,700 certified developers. The company is headquartered in Cambridge, UK.

Learn more at [www.aveva.com](https://www.aveva.com)