



AVEVA WORLD

CONNECT

N

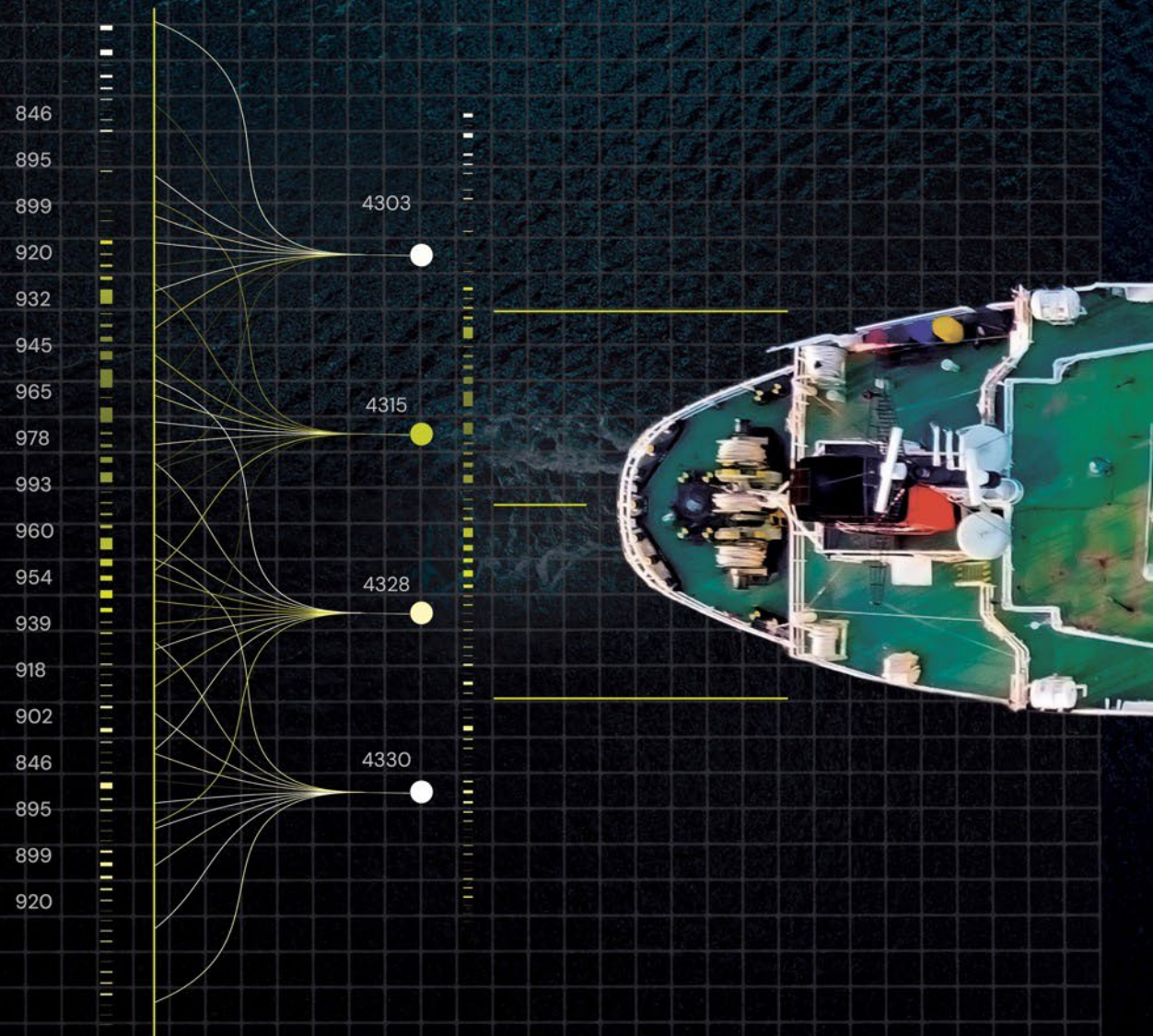
APRIL 2025

# Amping up Unified Engineering

With the power of CONNECT and AI

Greg Pada, SVP Business Strategy, Engineering, AVEVA

Moresh Wankhede, AI Product Manager - Cross-Portfolio, AVEVA





# Agenda

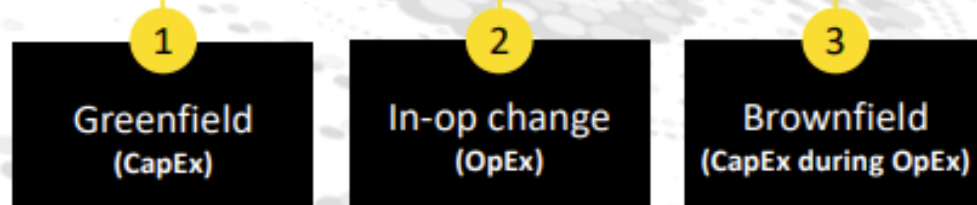
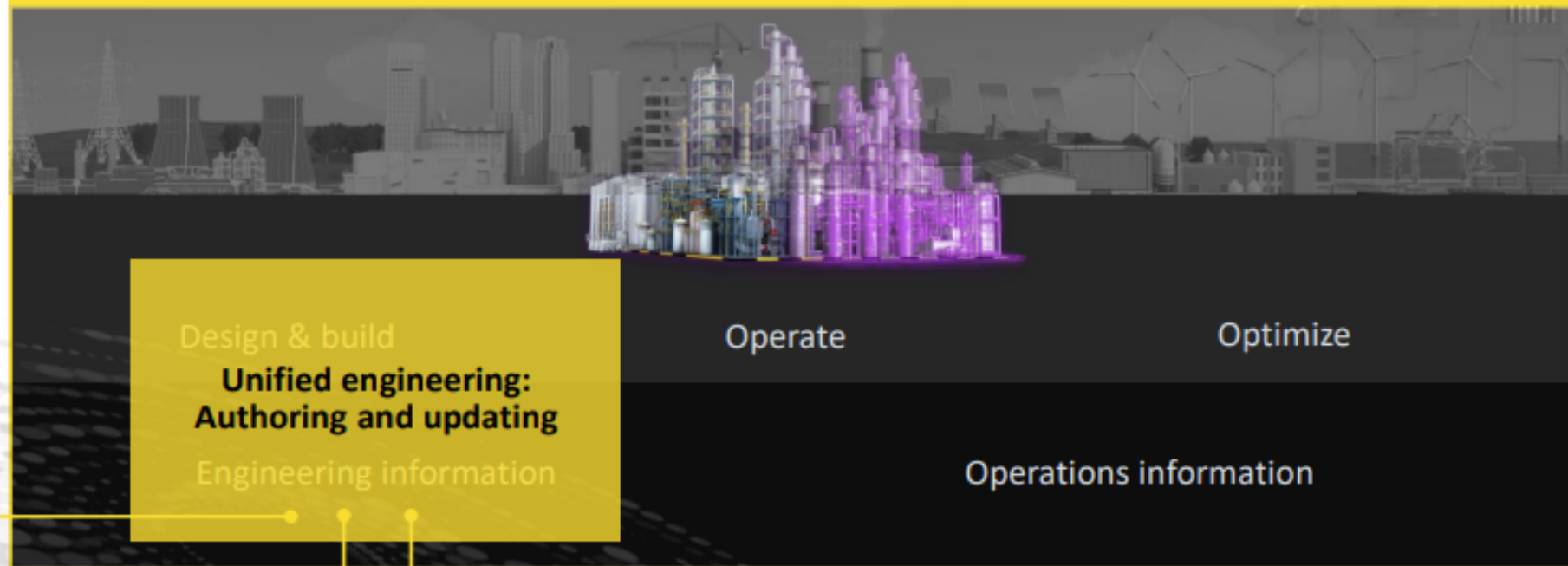
- Global Collaboration with Spectrum Data Service
- Unified Engineering Communities
- Boosting Productivity with AI



# Unparalleled Global Collaboration with seamless cross organization data sharing



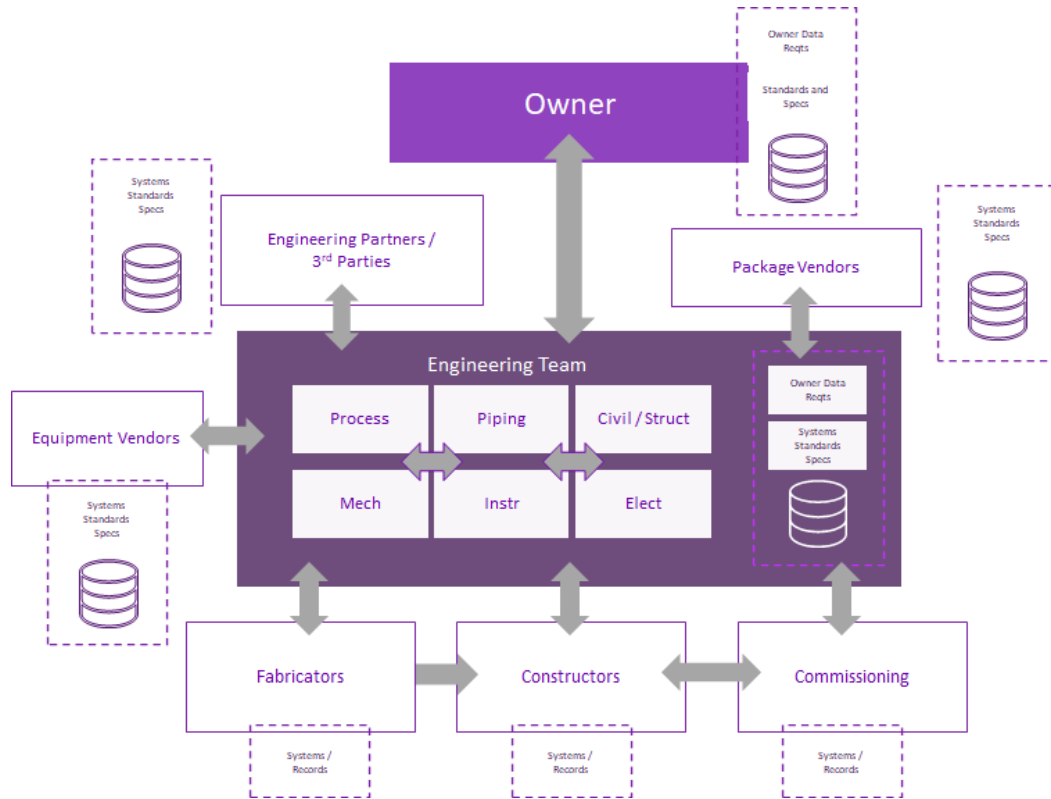
# CONNECT



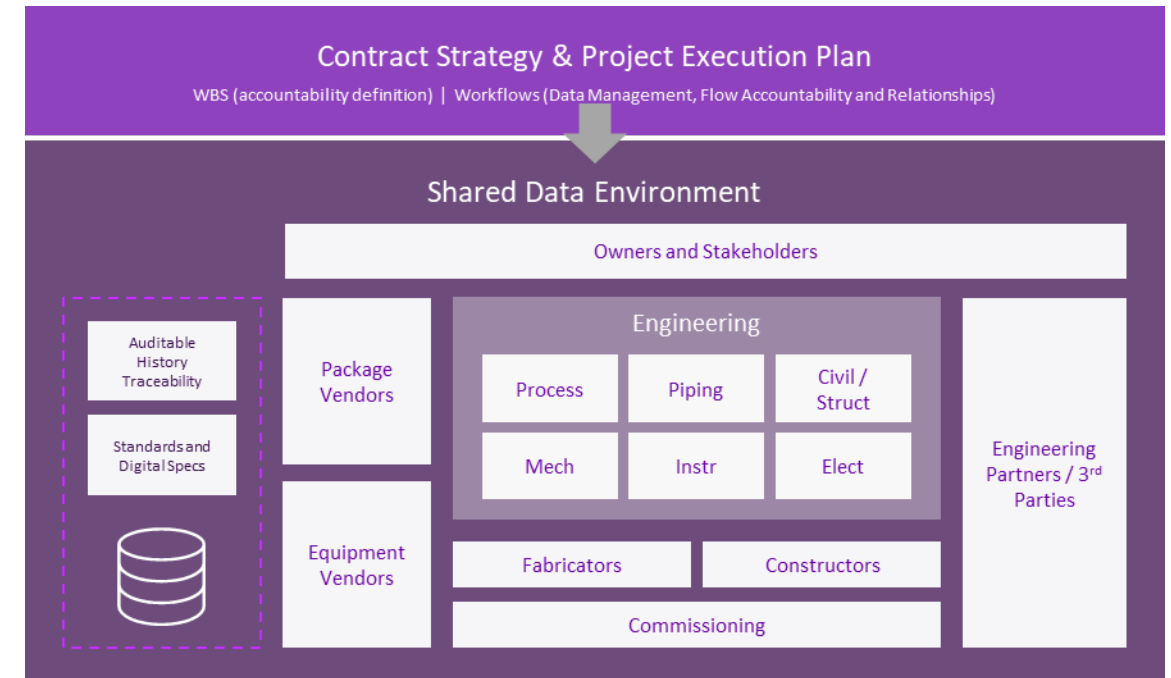
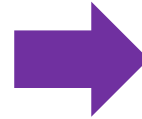
Continuous cycle of concurrent change  
Change that spans projects, teams and companies  
Challenging to control, impacting insight & trust

# Unparalleled global collaboration

## A truly digital project environment



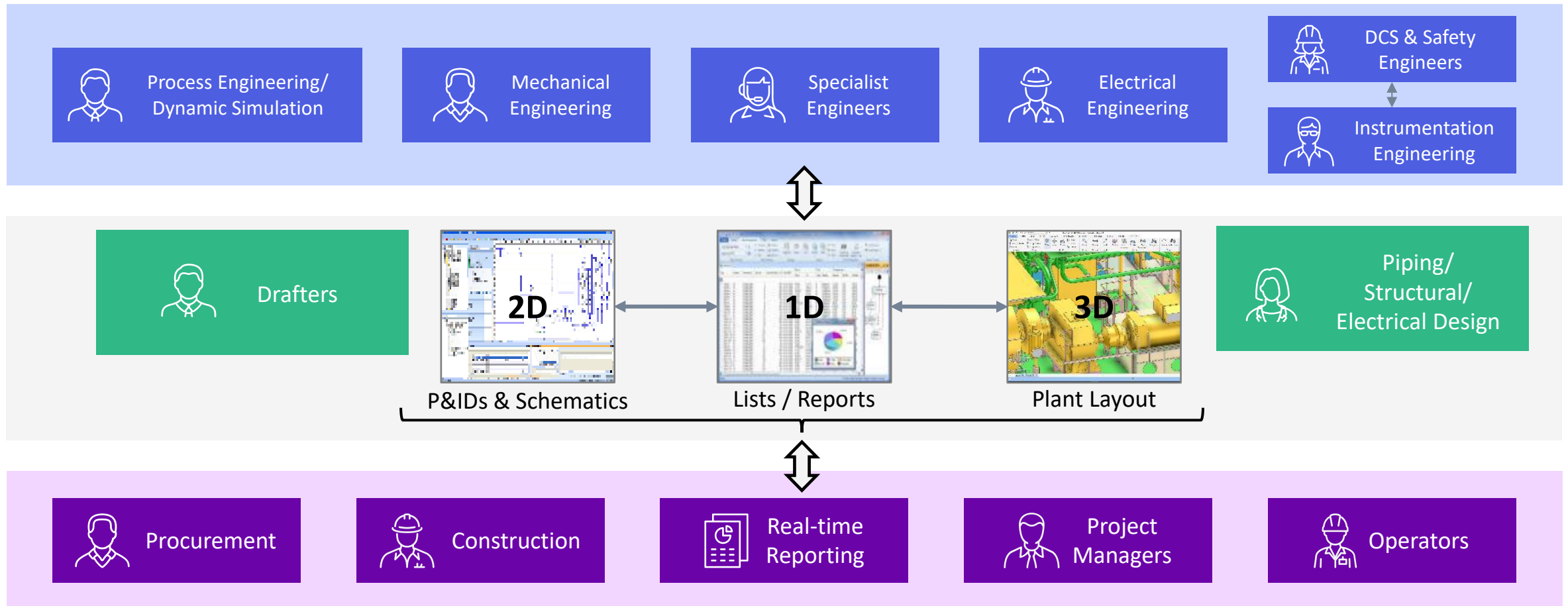
Disconnected Systems, Teams and Project Data



‘Connected’ Systems, Teams and Project Data

# AVEVA Unified Engineering

1D, 2D, 3D multi-discipline engineering and design leveraging common data



# Seamless cross organization data sharing

## Enabling collaboration in a complex world



**Simplify** – Remove the need to have multiple technologies which drive unnecessary cost and limit performance



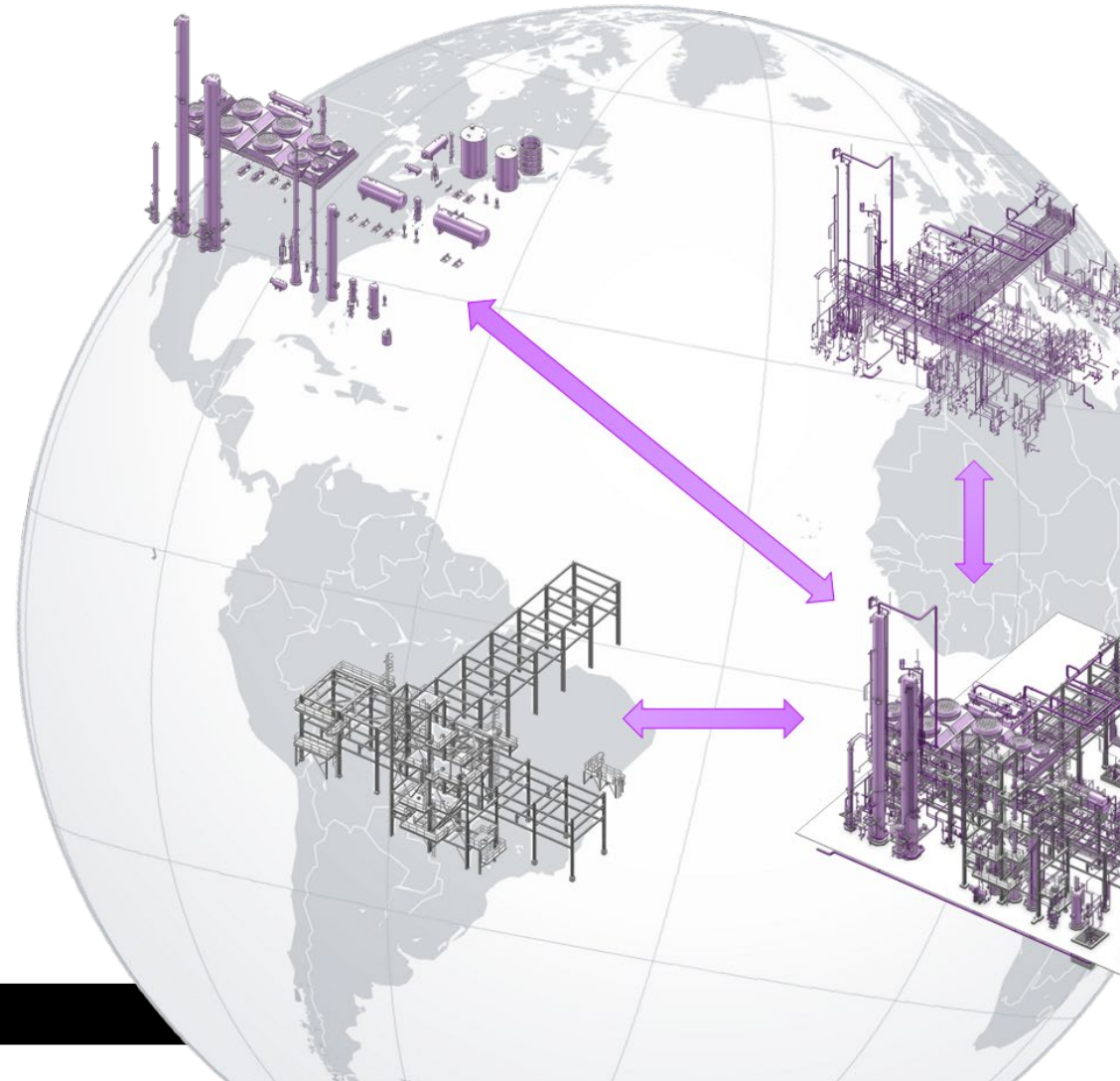
**Drive Time to Value** – Reduce complexity, time and cost for setup and maintenance



**Collaborative** – Easy data sharing while meeting IT security and Data Access control demands

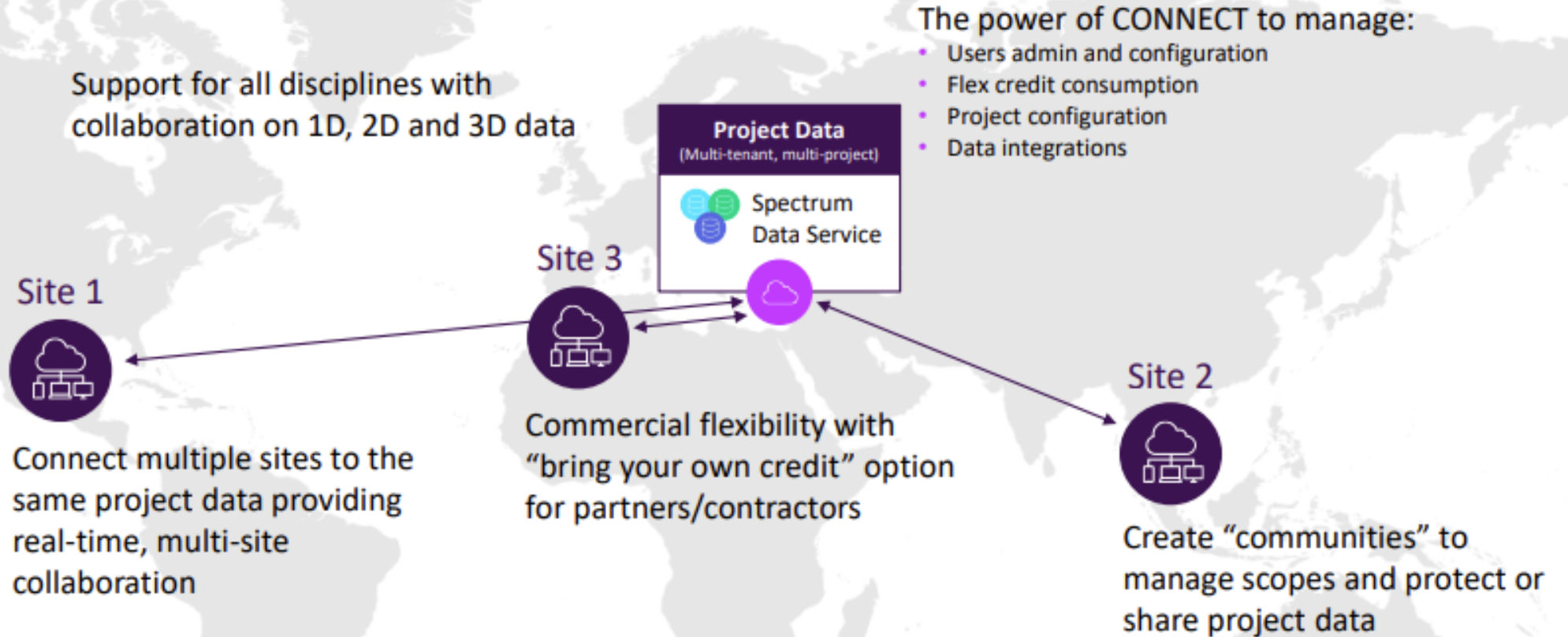


**Dynamic** – Offering flexible configurations that can not be adjusted as projects, facilities, and businesses mature

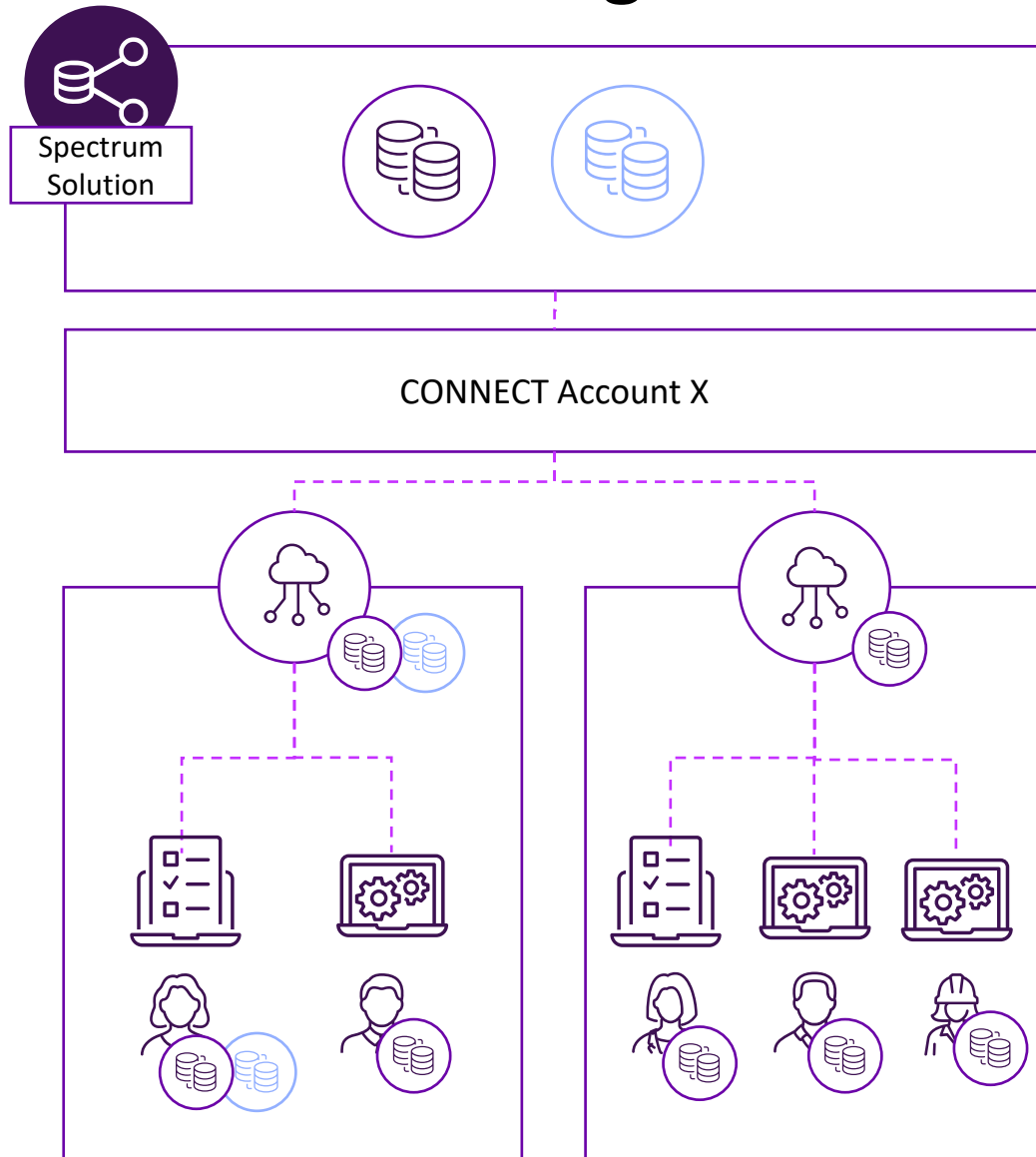




# Seamless cross organization data sharing

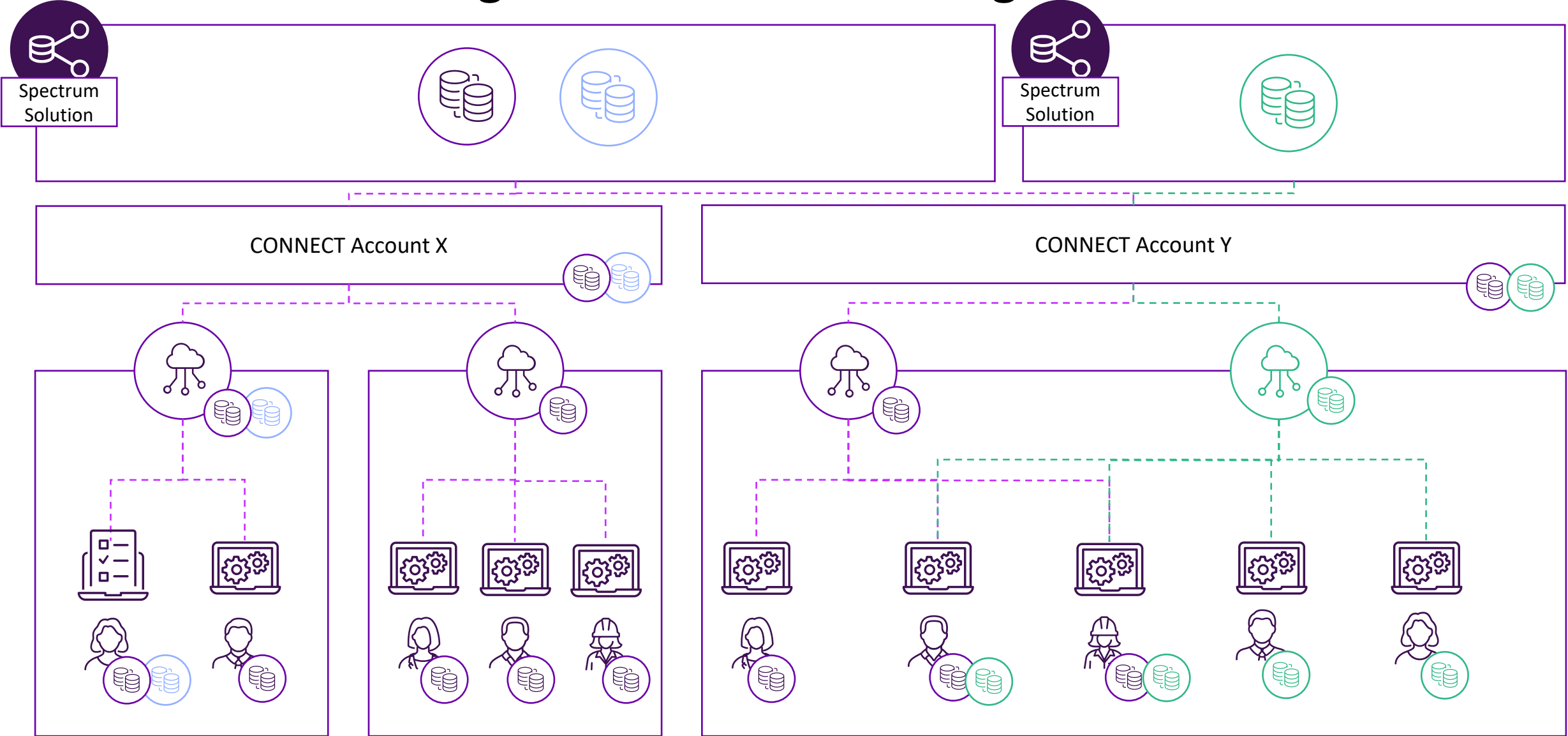


# Seamless cross organization data sharing



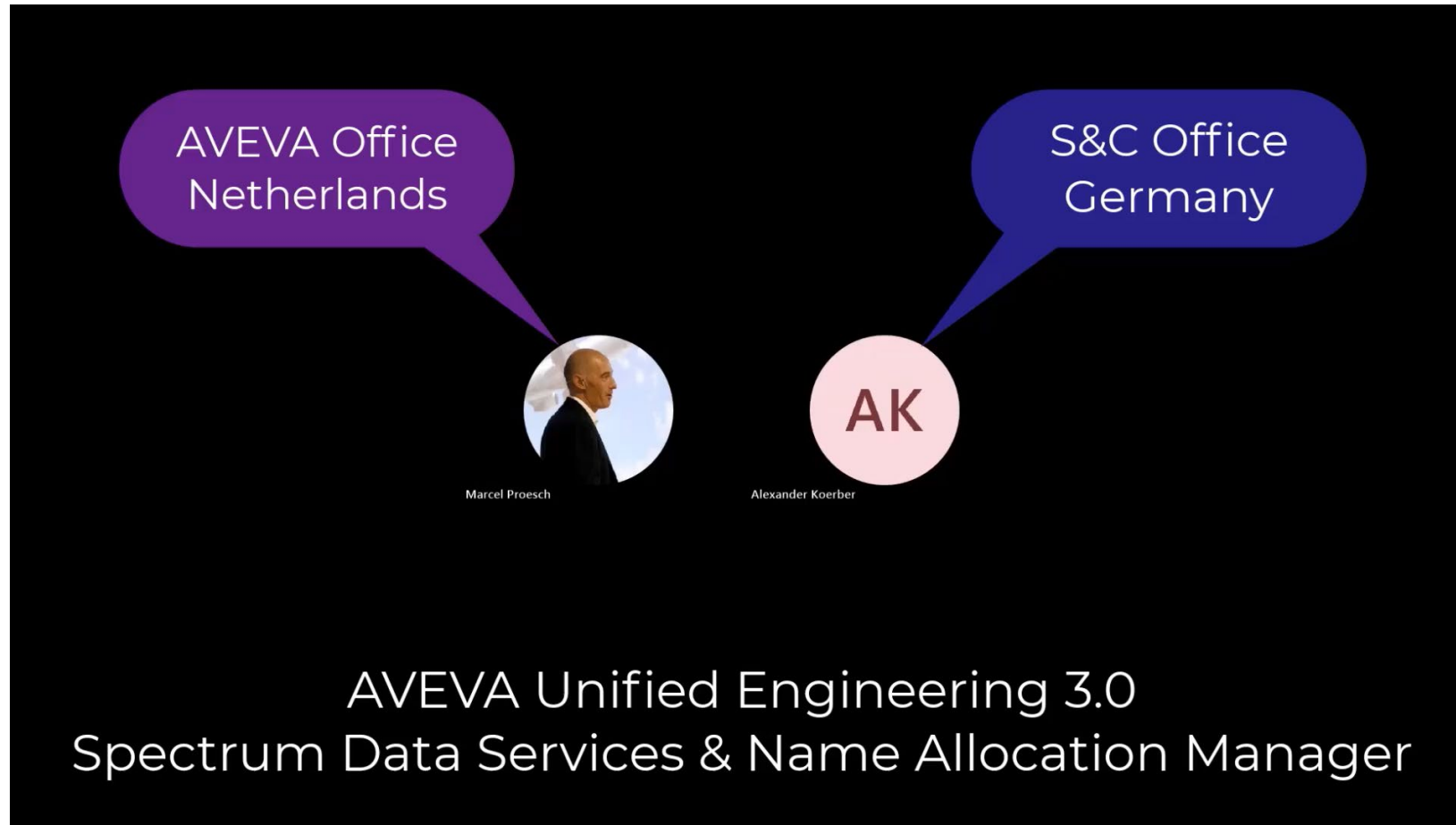
- Project data stored securely in the Spectrum cloud service providing a single source of truth.
- Accessed through CONNECT, the Spectrum service can be enabled on a CONNECT account.
- Edge Connectors provide a cache of the project data enabling access with reduced latency from many locations.
- Project Admin can control which Edge Connectors the project data is available on.
- Spectrum enabled Unified Engineering (1D/2D/3D & Admin) provide access to the data based on the user's Spectrum & Dabacon permissions.

# Seamless cross organization data sharing

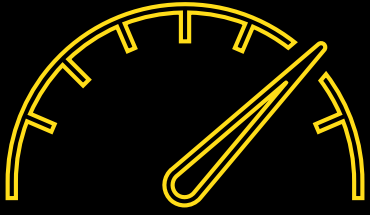


# Seamless cross organization data sharing

## Unified Engineering with Spectrum Data Service





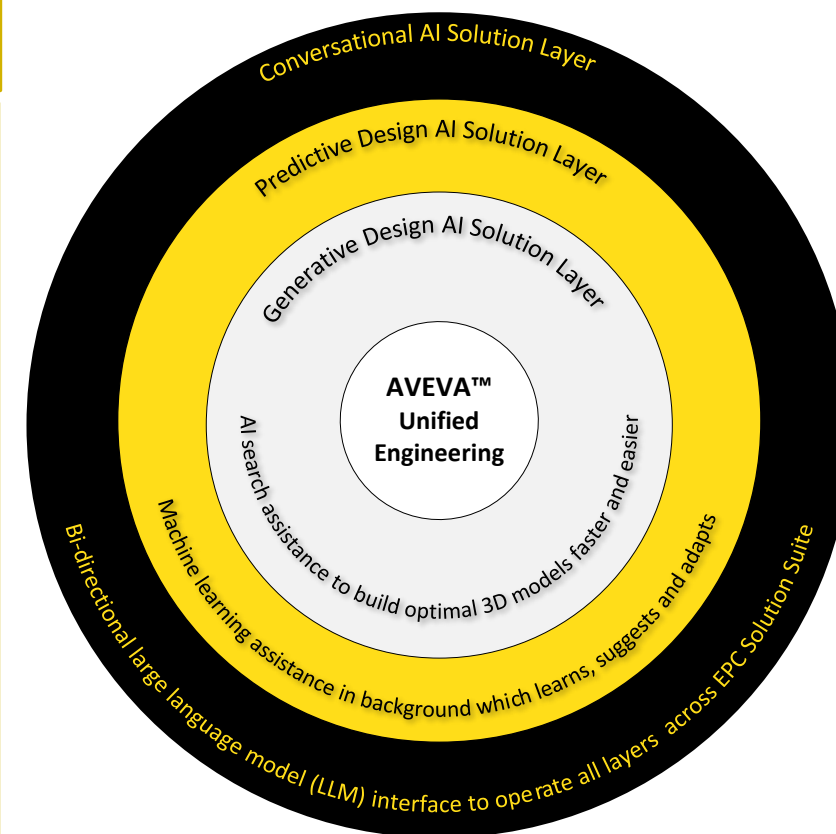
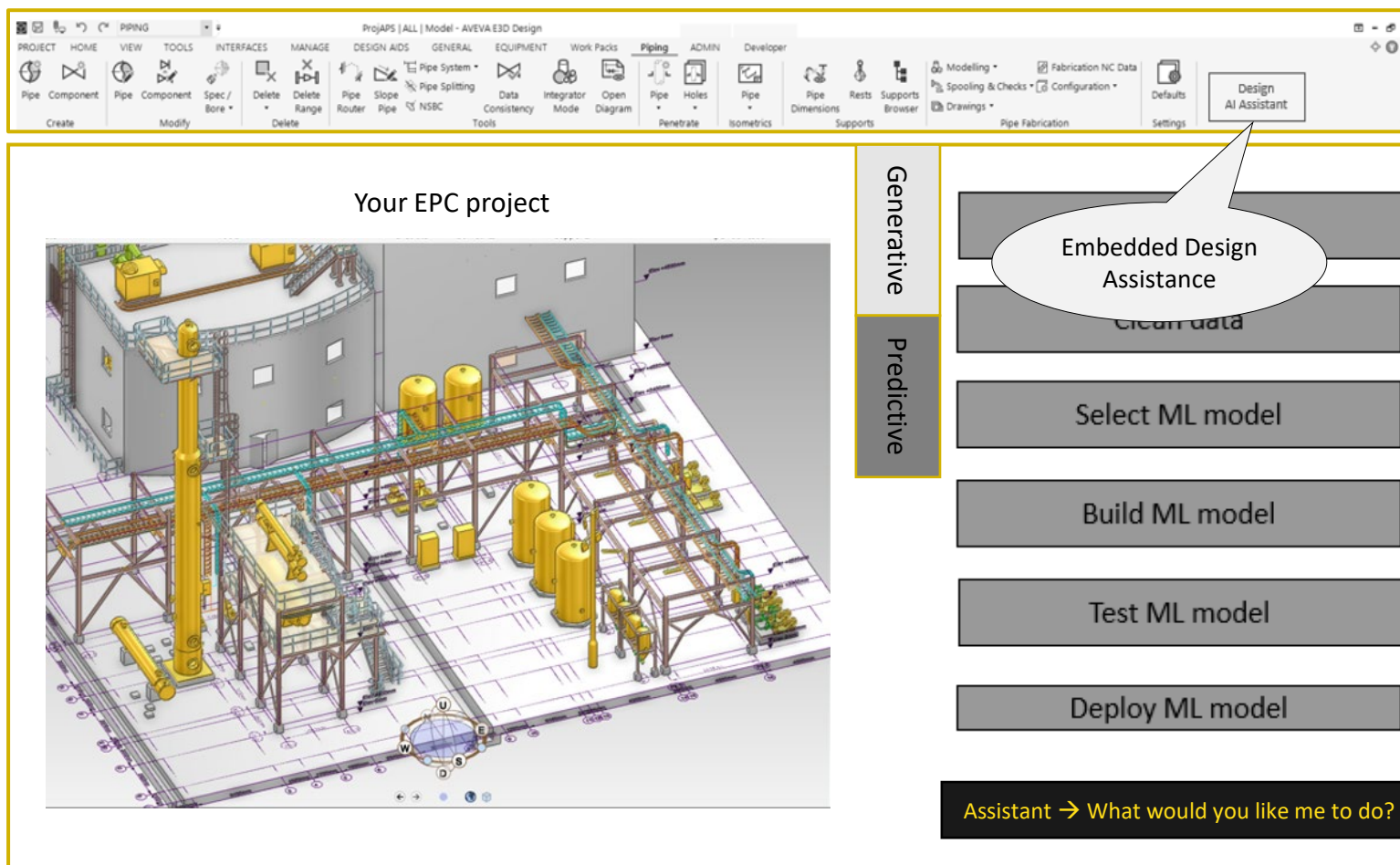


# Boosting Productivity with AI from Assistants to Agents



# The future of engineering design

## Multi-layered and co-ordinated AI capabilities

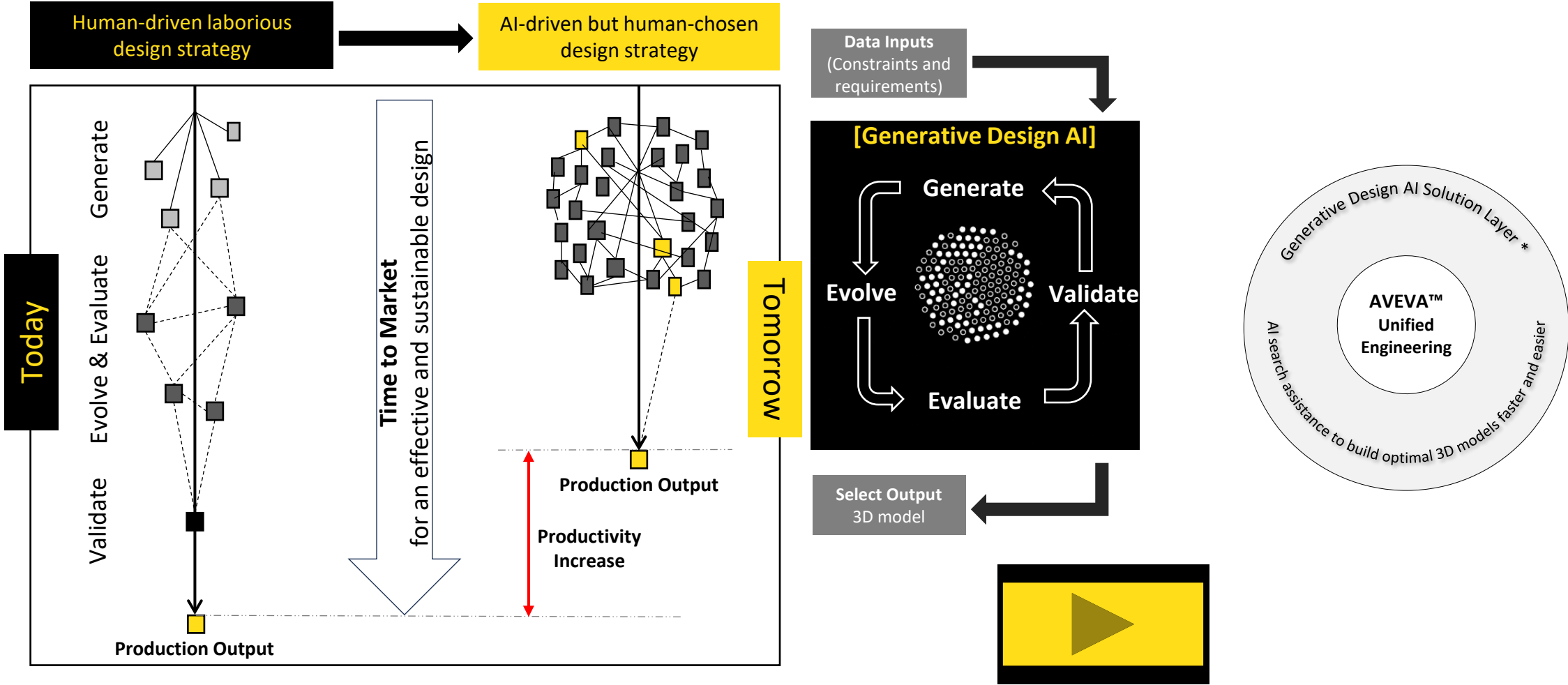


[conceptual prototype]



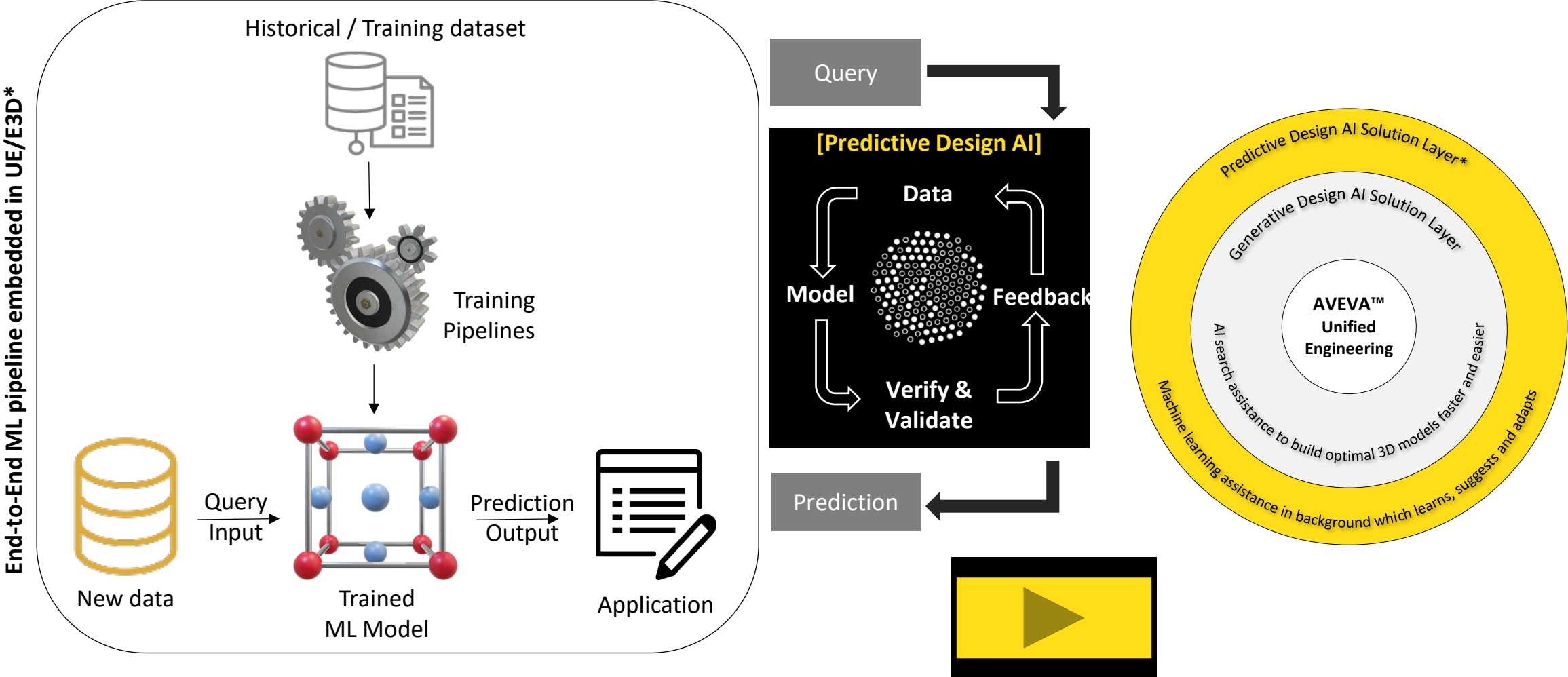
# The future of engineering design

## Going generative



# The future of engineering design

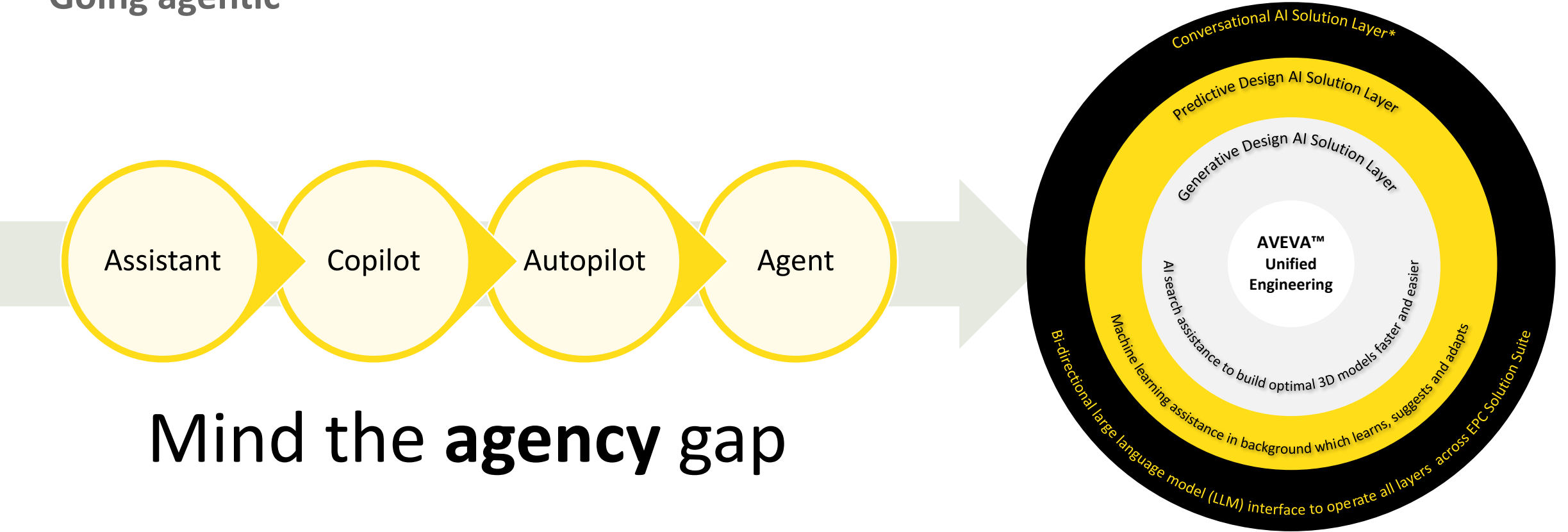
## Going predictive





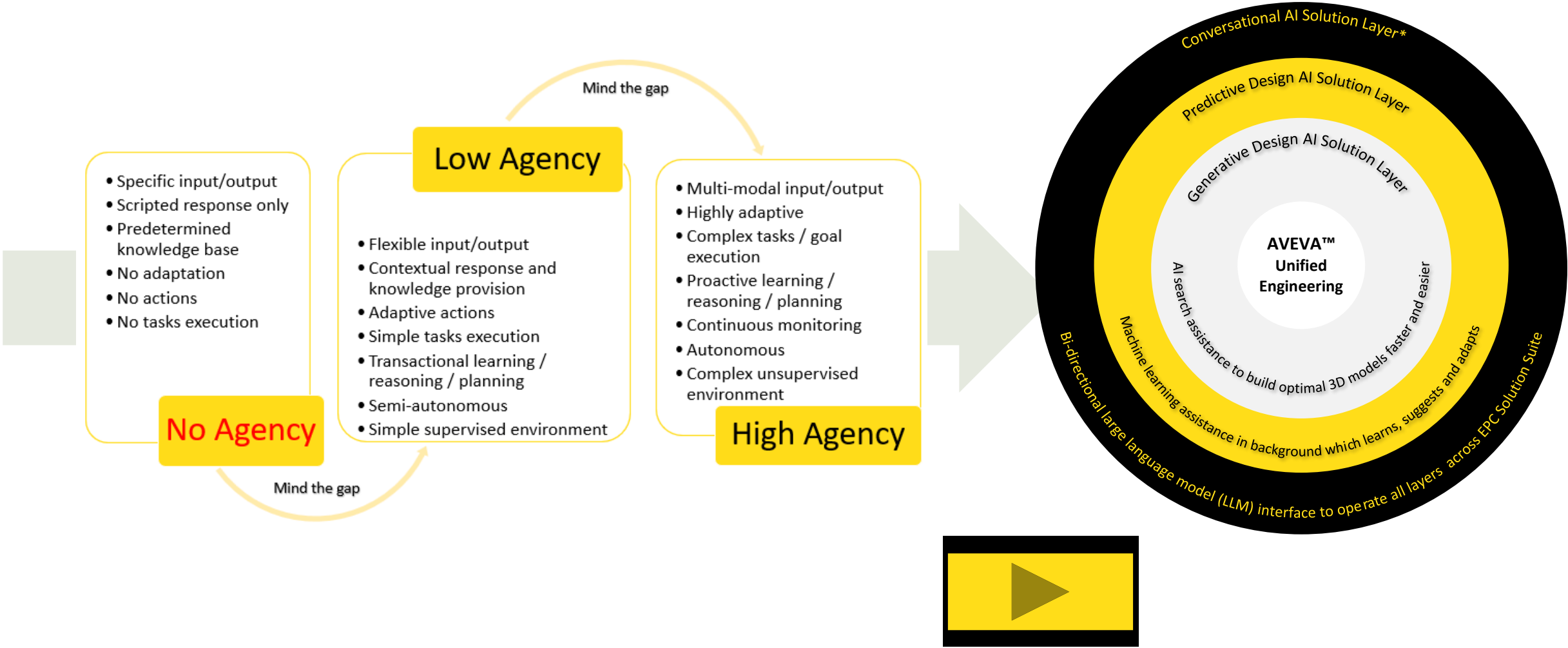
# The future of engineering design

Going agentic



# The future of engineering design

## Going agentic



# Questions?



Please wait for the microphone.  
State your name and company.

## Please remember to...

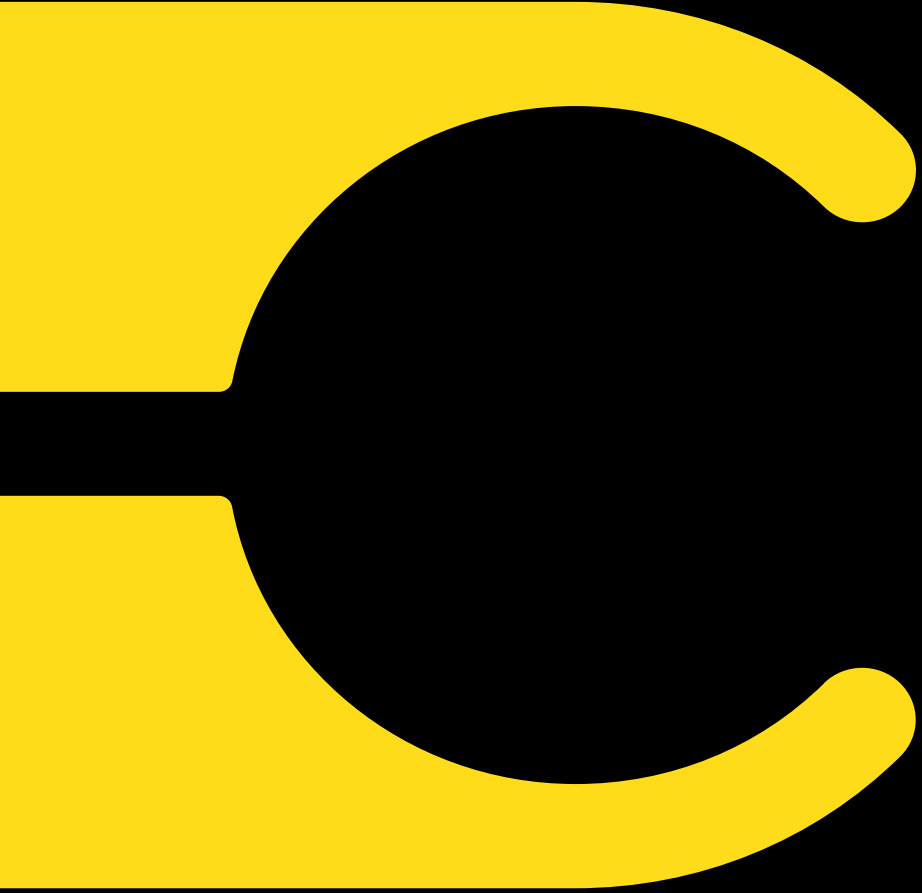
Navigate to this session in the  
mobile app to complete the survey.


# Thank you!

This presentation may include predictions, estimates, intentions, beliefs and other statements that are or may be construed as being forward-looking. While these forward-looking statements represent our current judgment on what the future holds, they are subject to risks and uncertainties that could result in actual outcomes differing materially from those projected in these statements. No statement contained herein constitutes a commitment by AVEVA to perform any particular action or to deliver any particular product or product features. Readers are cautioned not to place undue reliance on these forward-looking statements, which reflect our opinions only as of the date of this presentation.

The Company shall not be obliged to disclose any revision to these forward-looking statements to reflect events or circumstances occurring after the date on which they are made or to reflect the occurrence of future events.





 [linkedin.com/company/aveva](https://www.linkedin.com/company/aveva)

 [@avevagroup](https://twitter.com/avevagroup)

#### ABOUT AVEVA

AVEVA is a world leader in industrial software, providing engineering and operational solutions across multiple industries, including oil and gas, chemical, pharmaceutical, power and utilities, marine, renewables, and food and beverage. Our agnostic and open architecture helps organizations design, build, operate, maintain and optimize the complete lifecycle of complex industrial assets, from production plants and offshore platforms to manufactured consumer goods.

Over 20,000 enterprises in over 100 countries rely on AVEVA to help them deliver life's essentials: safe and reliable energy, food, medicines, infrastructure and more. By connecting people with trusted information and AI-enriched insights, AVEVA enables teams to engineer efficiently and optimize operations, driving growth and sustainability.

Named as one of the world's most innovative companies, AVEVA supports customers with open solutions and the expertise of more than 6,400 employees, 5,000 partners and 5,700 certified developers. The company is headquartered in Cambridge, UK.

Learn more at [www.aveva.com](https://www.aveva.com)