



AVEVAWORLD
PARIS

AVEVAWORLD

OCTOBER 2024

AVEVA MES - Advanced insights and guidance, optimized with AI

Jean-Pierre (JP) Caron – PM Model Driven MES, Advanced Planning & Scheduling,
MES Connect Visualization

Jean-pierre.caron@aveva.com



AVEVA

AVEVA WORLD 2024

Agenda

Artificial Intelligence in
manufacturing operations context

Introduction to CONNECT, our industrial intelligence platform & AVEVA's hybrid MES solution background

Industrial Assistant – Generative AI

Advanced Analytics

Industry & market pressures

\$3.7 T



Industry 4.0 for operations

The value created by the potential of manufacturers and suppliers implementing Industry 4.0 in their operations is estimated at 3.7 trillion USD in 2025.¹

~300%



Investments in digital twin

The application of digital twin technology is to play a pivotal role in future urban planning, construction and operations as it is expected to save the sector some \$280bn by 2030.²

75%



Digital improvement potential

75% of surveyed companies remain at the level of individual use cases and have not been able to impact at scale from their digital program.³

82%



Asset performance optimization

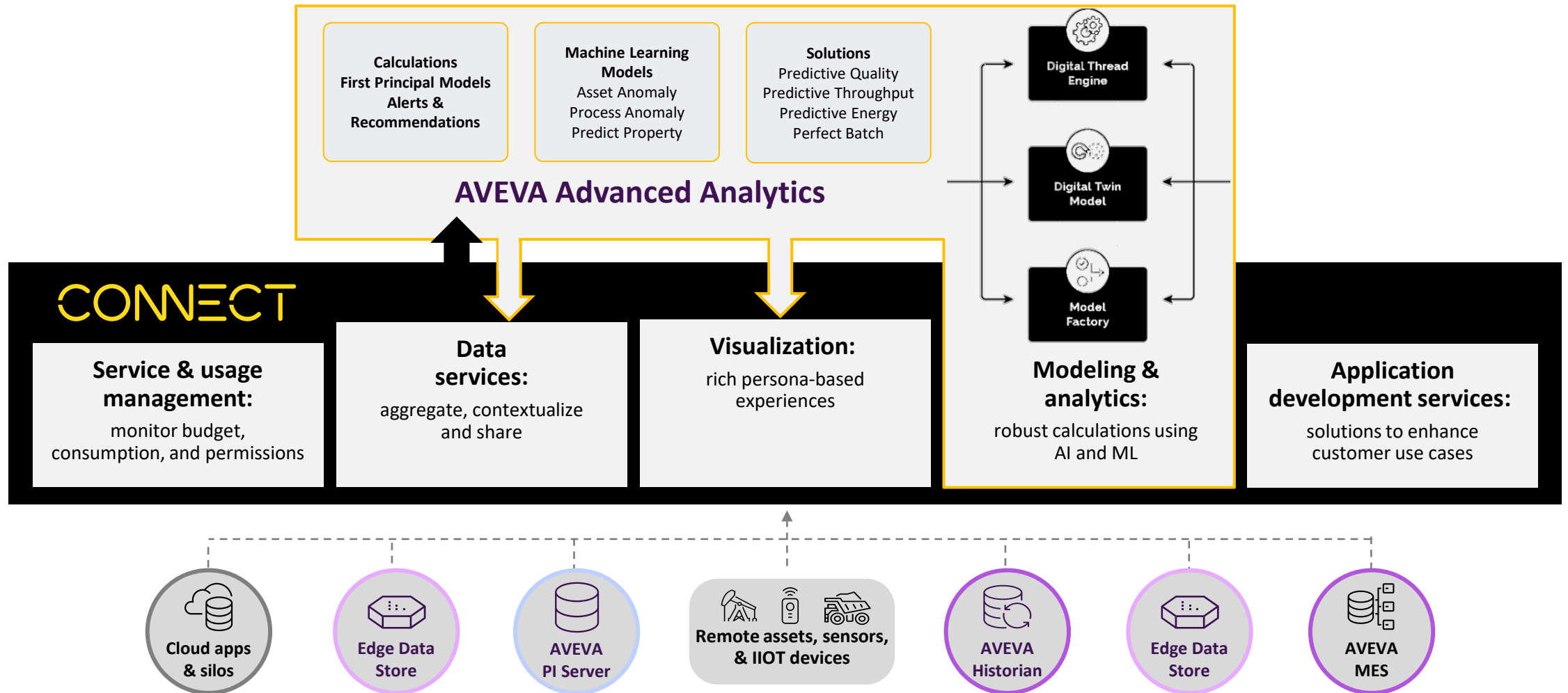
82% of asset failures are Random.⁴

Sources: 1. [McKinsey](#) 2. [Investment Monitor](#) 3. [BCG](#) 4. [Processing Magazine](#)

Introduction

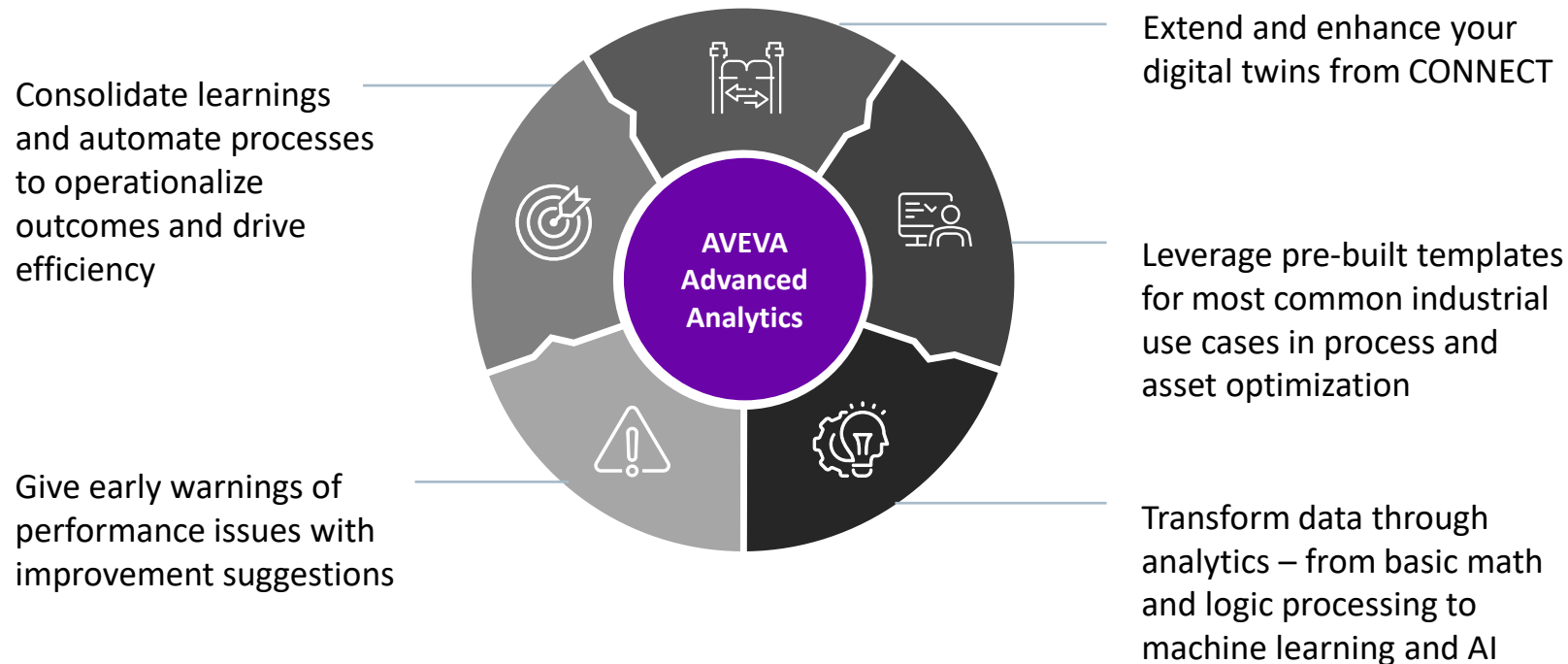
Connect AI with all industrial data and visualization

Open and neutral, providing rich data insights for your unified industrial ecosystem



AVEVA Advanced Analytics

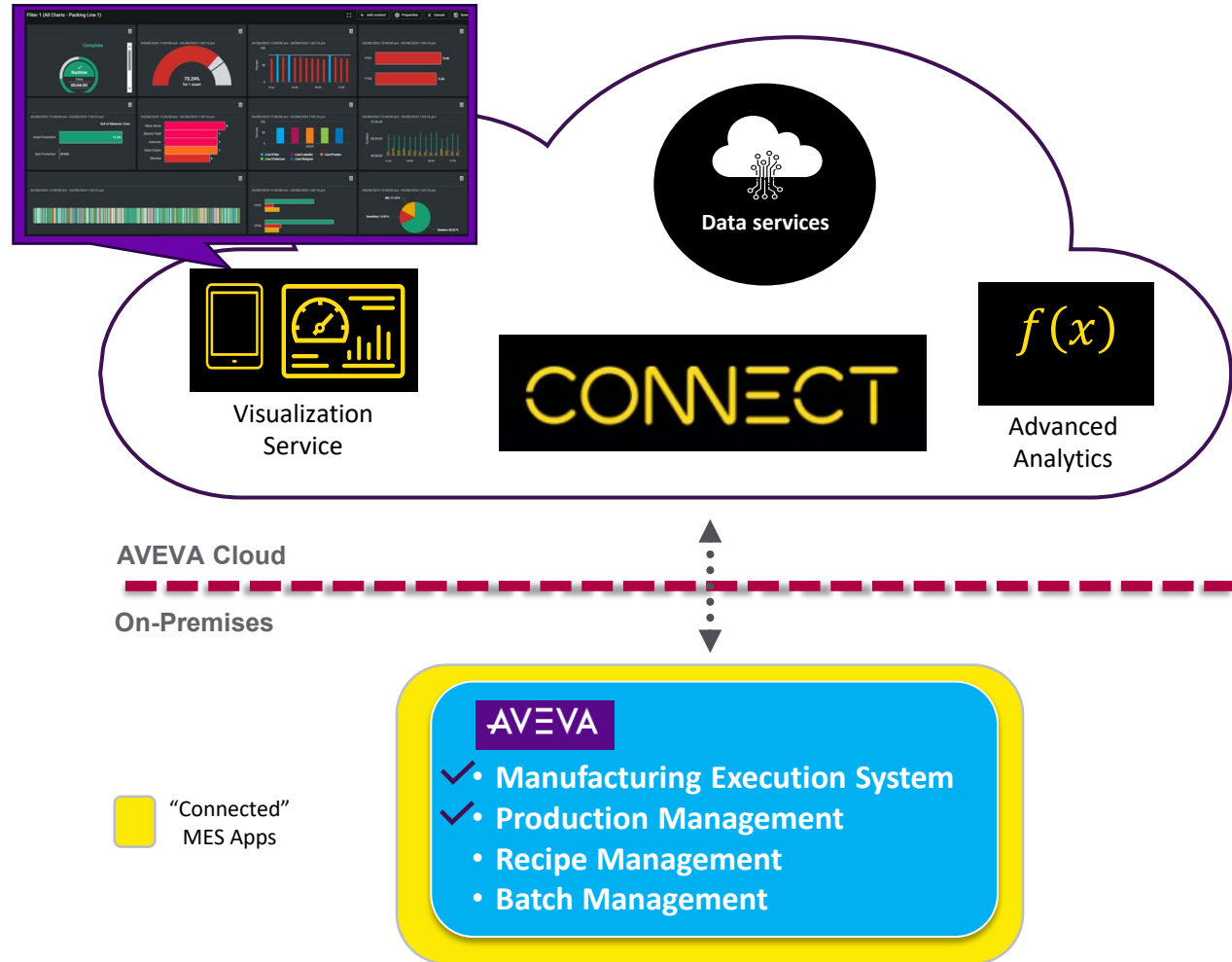
Transform operational data into actionable insights with a no-code, AI solution



Accelerate initiatives to create industrial intelligence with CONNECT

- Start small and prove initial value quickly
- Scale across the enterprise
- Empower all users – from engineers to data scientists – to collaborate on industrial AI applications

Hybrid Cloud MES solution architecture



Real-time Execution Capabilities

Connected plant applications that provide integration with CONNECT, the cloud platform.

Value-Add Cloud Apps & Services...

Cloud-based apps & services extending our on-premise (edge) based manufacturing operations capabilities with:

- **Data Services** - enterprise data historization & sharing
- **Visualization Services** - enterprise visualization & dashboarding
- **Advanced Analytics/AI** - predictive & prescriptive analytics

Commercial hybrid cloud MES offerings...

Transition all our MES products to hybrid cloud MES solutions:

- AVEVA Manufacturing Execution System – hybrid
- Production Management - Hybrid

Industrial AI assistant

Industrial AI Assistant on CONNECT

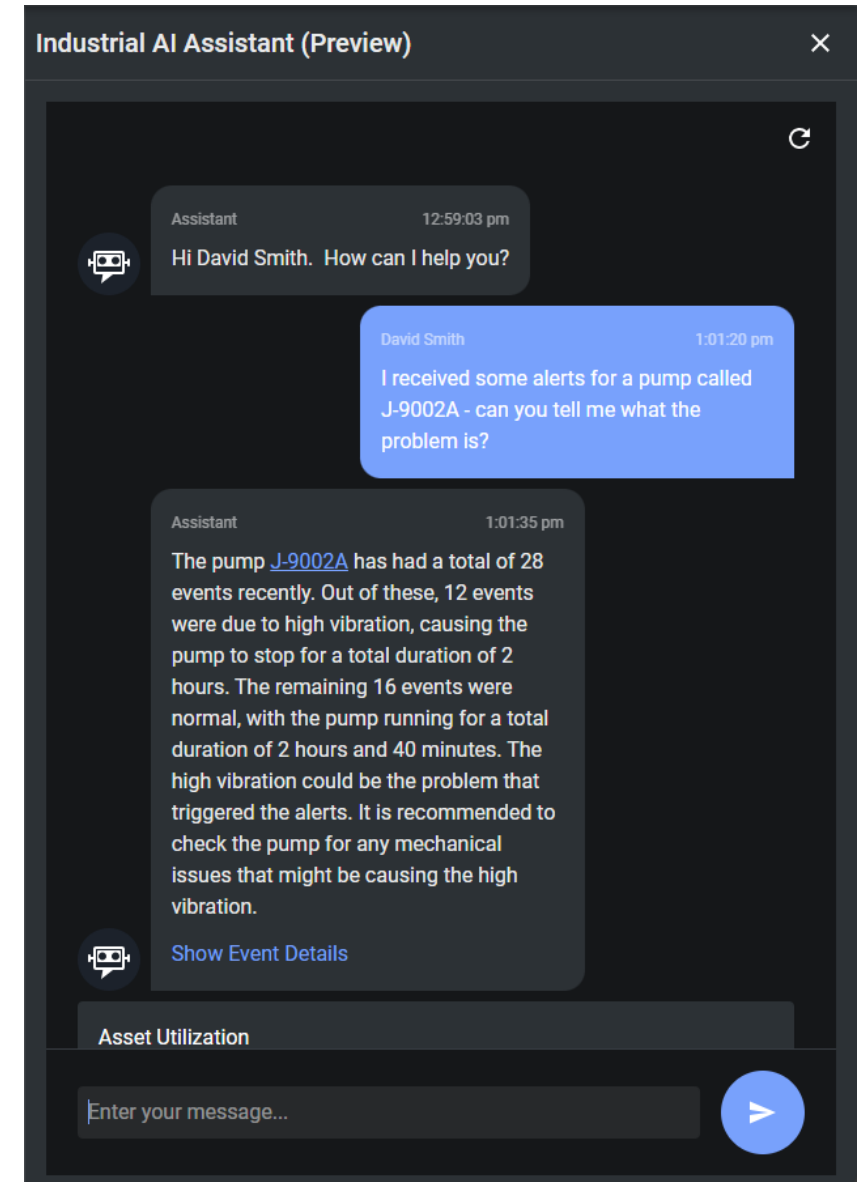
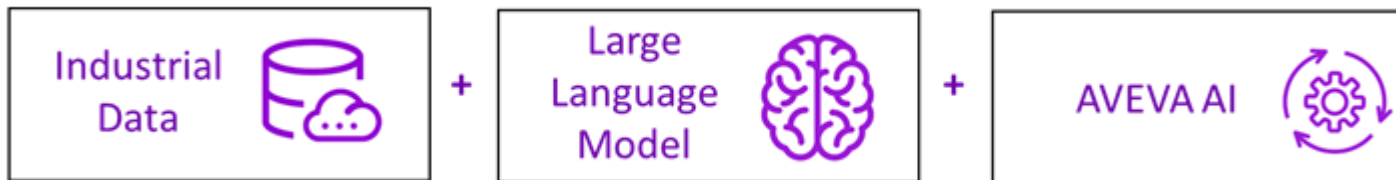
...partnered with  Microsoft | AVEVA AI infused | Patent-pending

Knowledge-Linking

- AI-driven data inferencing
- Automatic relationships across structured and unstructured data
- No data hierarchy or model needed
- Fast on-boarding

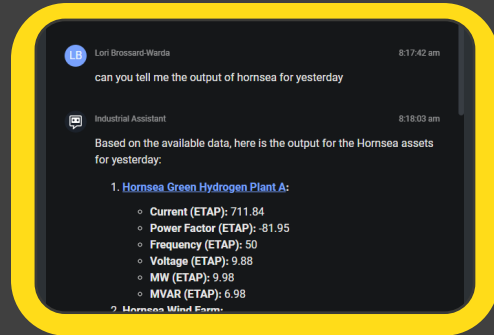
Objective-Driven

- Ask complicated questions (“why is my compressor operating worse now than it did last week?”)
- Breaks down the question into sub-queries behind the scenes, using focused guardrails
- Consolidates the response back to the user
- Transparent & traceable through Citations

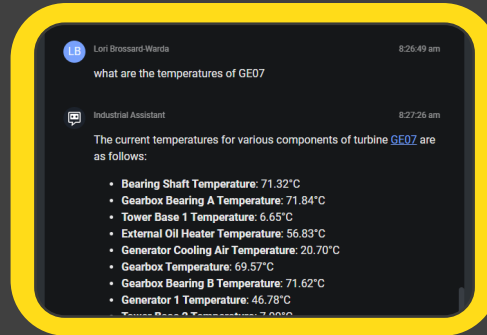


Industrial AI Assistant Key Features

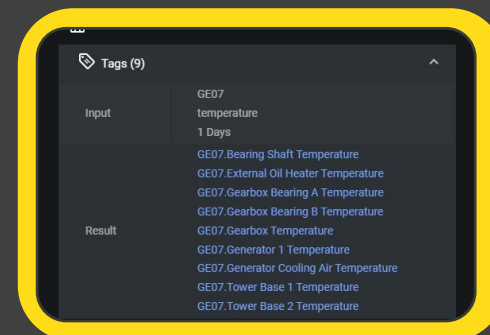
Secure access to your information using CONNECT



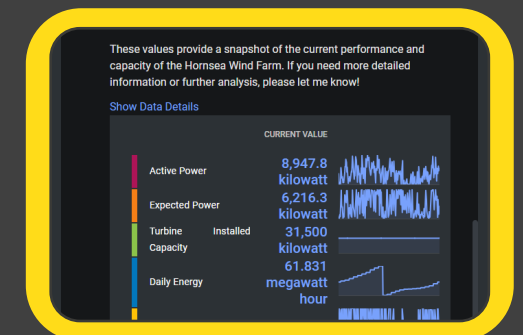
Natural Language Interface



Content Search and Summarization

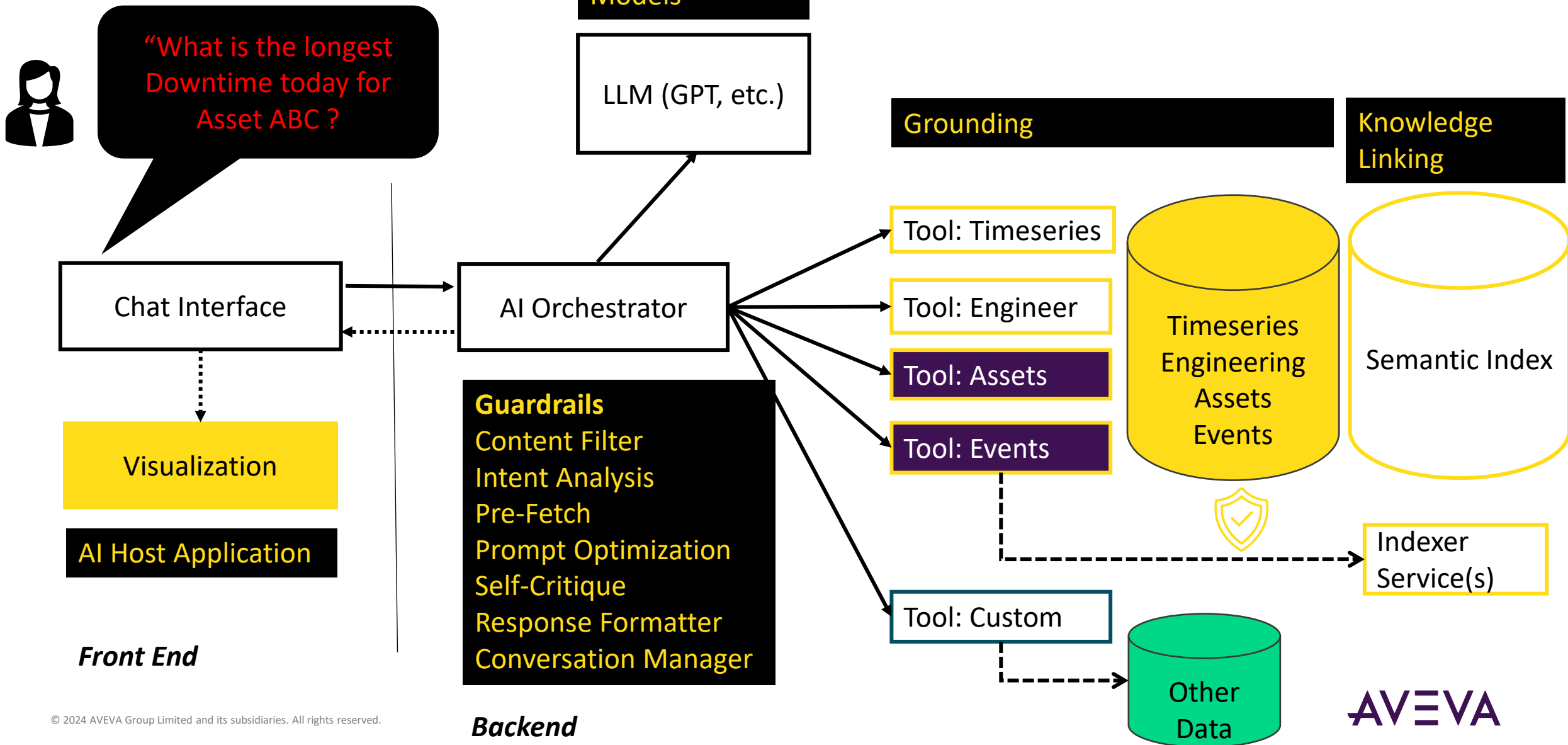


Citations to show our work (Transparency and Traceability)



Generate charts inline Stream & events

Architecture



Industrial AI Assistant for MES

The screenshot displays the AVEVA user interface. At the top left, the 'AVEVA' logo is visible. A navigation sidebar on the left includes 'Home', 'Browse', 'Create', 'Configure', and 'Recently Viewed'. The main content area is titled 'Content' and shows a 'Most viewed' section with a grid of eight dashboard cards. Each card includes a title, view count, and modification date. Below this grid is a filter bar with 'All', 'Created by me', and 'Favorites' options. A search bar is present with the text 'Search list by keyword'. The main part of the screen is a table listing various assets.

<input type="checkbox"/>	Name ↑	Asset	Owner	Modified	Shared	
<input type="checkbox"/>	Bottle Line 001 Predictive Uptime Analytics ☆	BottleLine001	jean-pierre.caron@aveva.com	09/11/2024 4:54:27 PM	Shared	⋮
<input type="checkbox"/>	Bottle Line 001 Predictive Uptime Analytics Bottom	BottleLine001	jean-pierre.caron@aveva.com	09/18/2024 11:57:57 AM	Shared	⋮
<input type="checkbox"/>	Bottle Line 001 Predictive Uptime Analytics top	BottleLine001	jean-pierre.caron@aveva.com	09/18/2024 11:56:47 AM	Shared	⋮
<input type="checkbox"/>	BottleLin001 AA dashboard copy	BottleLine001	jean-pierre.caron@aveva.com	09/11/2024 4:56:46 PM	Shared	⋮
<input type="checkbox"/>	BottleLine AA scores	BottleLine001	jean-pierre.caron@aveva.com	09/10/2024 11:08:04 AM	Private	⋮
<input type="checkbox"/>	BottleLine001 AA dashboard canvas	BottleLine001	jean-pierre.caron@aveva.com	09/13/2024 1:41:40 PM	Private	⋮
<input type="checkbox"/>	BottleLine001 Trend	BottleLine001	jean-pierre.caron@aveva.com	09/18/2024 11:43:30 AM	Shared	⋮
<input type="checkbox"/>	BrewTrain100 Dashboard	Brew Train100	jean-pierre.caron@aveva.com	09/13/2024 4:26:03 PM	Shared	⋮
<input type="checkbox"/>	Dashboard001test	Mash100	jean-pierre.caron@aveva.com	09/17/2024 3:37:45 PM	Private	⋮
<input type="checkbox"/>	Downtime Pareto test	Mash100	jean-pierre.caron@aveva.com	09/19/2024 9:24:05 AM	Private	⋮

At the bottom of the screen, there is a URL bar showing: `https://us.visualization.connect.aveva.com/framework/dashboard/7230f70a-5f42-e2d0-ff2d-3a14ee94a355`. The bottom right corner of the interface shows 'Items per page 50' and '1 - 20 of 20'.

- Home
- Browse
- Create
- Configure
- Recently Viewed

Content

Most viewed

GE01 - Powers

742 views
Modified: 9/26/2023 8:39 AM
charles.navarrete@aveva.com

GE01-GE01 - ActivePower...

676 views
Modified: 6/18/2024 3:44 AM
rocio.perez@aveva.com

GE01 - GenTemperatures

662 views
Modified: 7/22/2024 4:06 AM
bagdevi.moharana@aveva.com

App - Active Power Vs Mo...

660 views
Modified: 7/19/2024 9:44 AM
bagdevi.moharana@aveva.com

GE01 - Temperatures vs G...

642 views
Modified: 7/19/2024 10:01 AM
bagdevi.moharana@aveva.com

GE01 - Dashboard

459 views
Modified: 7/16/2024 10:16 AM
dan.lopez@aveva.com

GE01-App - Active Vs Expe...

408 views
Modified: 7/19/2024 9:46 AM
bagdevi.moharana@aveva.com

GE02

281 views
Modifie
charles.

- All
- Created by me
- Favorites

Search list by keyword

<input type="checkbox"/>	Name ↑	Asset	Owner	Modified	Shared	
<input type="checkbox"/>	Bottle Line 001 Predictive Uptime Analytics ☆	BottleLine001	jean-pierre.caron@aveva.com	09/11/2024 4:54:27 PM	Shared	⋮
<input type="checkbox"/>	Bottle Line 001 Predictive Uptime Analytics Bottom	BottleLine001	jean-pierre.caron@aveva.com	09/18/2024 11:57:57 AM	Shared	⋮
<input type="checkbox"/>	Bottle Line 001 Predictive Uptime Analytics top	BottleLine001	jean-pierre.caron@aveva.com	09/18/2024 11:56:47 AM	Shared	⋮
<input type="checkbox"/>	BottleLin001 AA dashboard copy	BottleLine001	jean-pierre.caron@aveva.com	09/11/2024 4:56:46 PM	Shared	⋮
<input type="checkbox"/>	BottleLine AA scores	BottleLine001	jean-pierre.caron@aveva.com	09/10/2024 11:08:04 AM	Private	⋮
<input type="checkbox"/>	BottleLine001 AA dashboard canvas	BottleLine001	jean-pierre.caron@aveva.com	09/13/2024 1:41:40 PM	Private	⋮
<input type="checkbox"/>	BottleLine001 Trend	BottleLine001	jean-pierre.caron@aveva.com	09/18/2024 11:43:30 AM	Shared	⋮
<input type="checkbox"/>	BrewTrain100 Dashboard	BrewTrain100	jean-pierre.caron@aveva.com	09/13/2024 4:26:03 PM	Shared	⋮
<input type="checkbox"/>	Dashboard001test	Mash100	jean-pierre.caron@aveva.com	09/17/2024 3:37:45 PM	Private	⋮
<input type="checkbox"/>	Downtime Pareto test	Mash100	jean-pierre.caron@aveva.com	09/19/2024 9:24:05 AM	Private	⋮

Advanced Analytics

MES use cases with Advanced Analytics



Perfect Quality

Use cases:

- Reduce frequency of quality measurements
- Offline measurement with delayed lab results
- Get an early indication of quality in production line

Solution outcomes:

- Predicted Quality value
- Ideal operating conditions
- Anomaly timeline and breakdown
- Recommendations on controllable parameters



Throughput Optimization

Use cases:

- Identify optimum operating conditions to maximize production
- Identify measures of production by product or rate

Solution outcomes:

- Predicted production rate
- Ideal operating conditions
- Anomaly timeline and breakdown
- Recommendations on controllable parameters



Perfect Energy

Use cases:

- There is no overall measure of energy consumption
- Normalized measures of energy use by product
- Identify optimum operating conditions to minimize energy consumption

Solution outcomes:

- Normalized energy use
- Predicted total energy consumption
- Ideal operating conditions
- Anomaly timeline and breakdown
- Recommendations on controllable parameters

Additional Solutions

Perfect Production

Automate investigations and understanding of performance drivers with ML

Perfect Batch

Continuously evaluate batch performance and automate actions

Uptime Optimization

Real-time alerts and recommendations to avoid downtime events

Asset Reliability

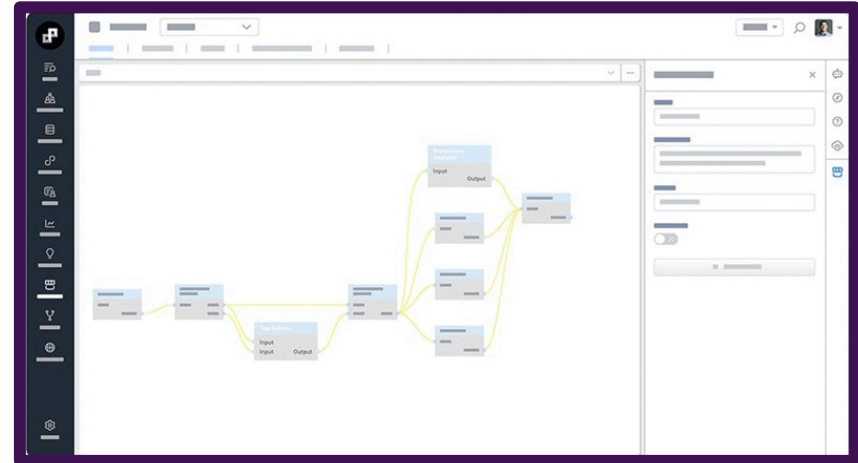
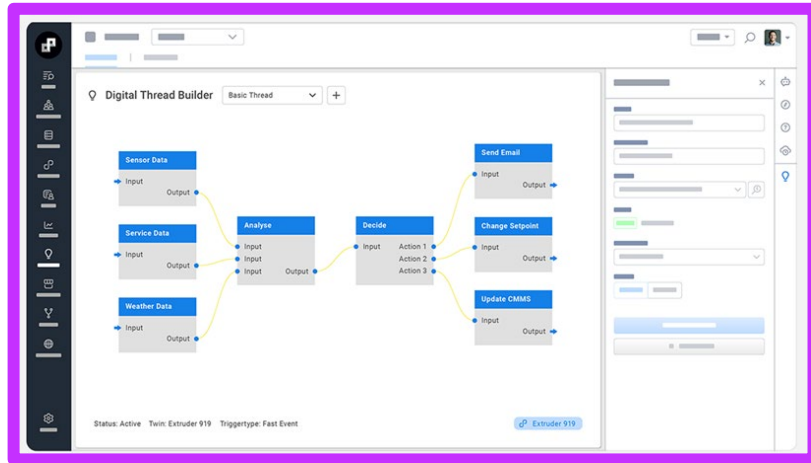
Predict and prevent common failure modes at scale

Asset Life

Maximize serviceable life and proactively manage failure risks at scale

Simplified User Experience

Property	Description	Value	Data Type	Alert Count	Status
✓ BottlingLine01_V2 Uptime model Anomaly Score	BottlingLine01_V2 Uptime model Anomaly Score	0.0	Float	Normal	—
✓ BottlingLine01_V2 Uptime model Probability	BottlingLine01_V2 Uptime model Probability	88.0	Float	Normal	—
✓ Container Count.Value	Container Count.Value	391,789.0	Float	Normal	—
✓ Container Reject Count.Value	Container Reject Count.Value	841.0	Float	Normal	—
✓ Container Size Value	Container Size Value	295.0	Float	Normal	—
✓ Container Target Value	Container Target Value	480,000.0	Float	Normal	—
✓ Fill Nozzle Pressure.Value	Fill Nozzle Pressure.Value	0.3	Float	Normal	—
✓ Filter Speed Setpoint.Value	Filter Speed Setpoint.Value	300.0	Float	Normal	—
✓ Filter Speed.Value	Filter Speed.Value	300.0	Float	Normal	—
✓ Float Tank Level Setpoint Low.Value	Float Tank Level Setpoint Low.Value	300.0	Float	Normal	—
✓ Float Tank Level.Value	Float Tank Level.Value	303.6	Float	Normal	—
✓ Mixer To Float Rate.Value	Mixer To Float Rate.Value	88.0	Float	Normal	—
✓ Running State.Value	Running State.Value	5.0	Float	Normal	—

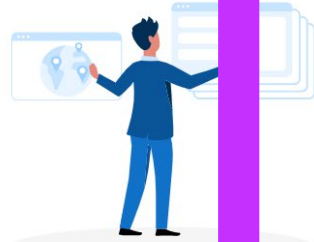


CONNECT data services is system of record for Advanced Analytics provides a number of methods for collecting data from external sources

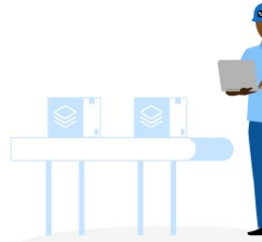
Data Sources



Digital Twin



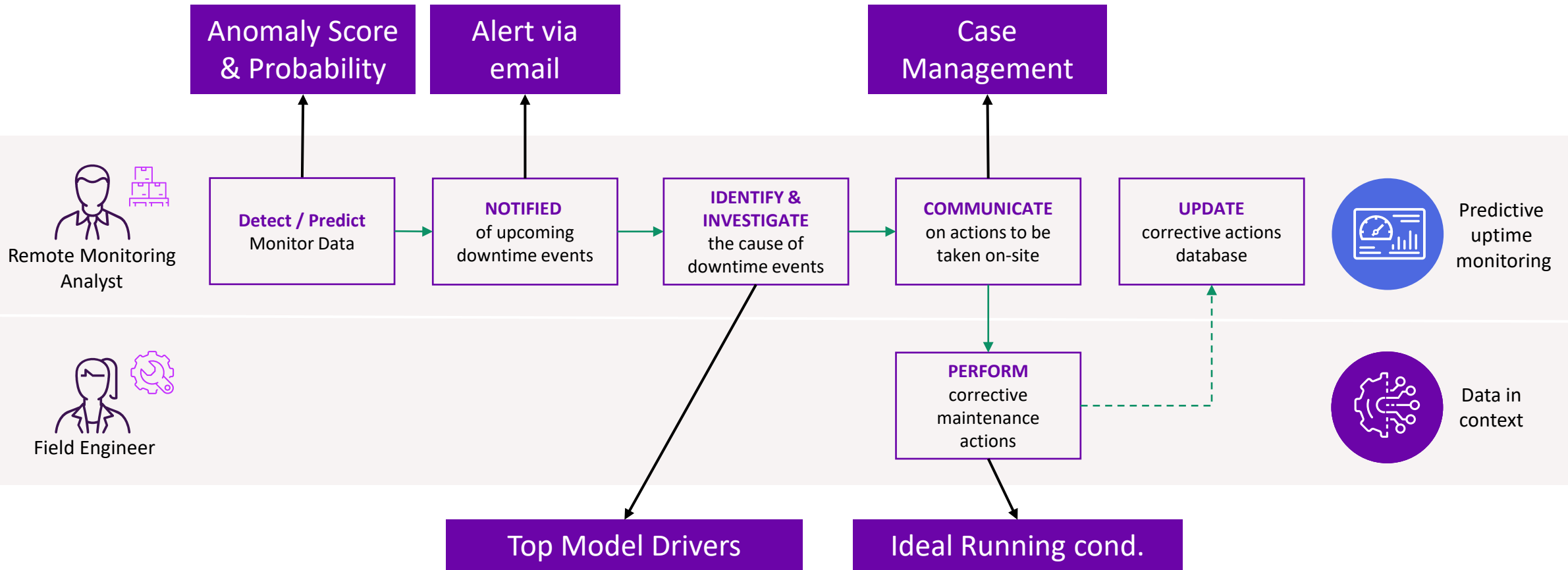
Model Factory



A digital assembly line for automating machine learning (ML) model creation and deployment (Use cases templated model selection)

The actions represented by a digital thread could trigger specific actions or activities (No-Code logical Workflow)

Predictive Uptime – Monitoring Production Parameters



Connected MES data available in Advanced Analytics

The screenshot shows the 'Twin1' interface with a list of MES events. The events are:

Name	Description	Type	Metadata	Active
Twin1	MESJobResponse	MESJobResponse		✓
Twin1	MESJobHourlyResponse	MESJobHourlyResponse		✓
Twin1	MESMaterialProducedActual	MESMaterialProducedActual		✓
Twin1	MESEquipmentUtilizationHistory	MESEquipmentUtilizationHistory		✓
Twin1	MESShiftHistory	MESShiftHistory		✓

An arrow points from the 'MESEquipmentUtilizationHistory' row to a mapping configuration dialog. The dialog is titled 'Map fields from the incoming event (left) to their equivalent name in TwinThread (right)'. It shows the following mappings:

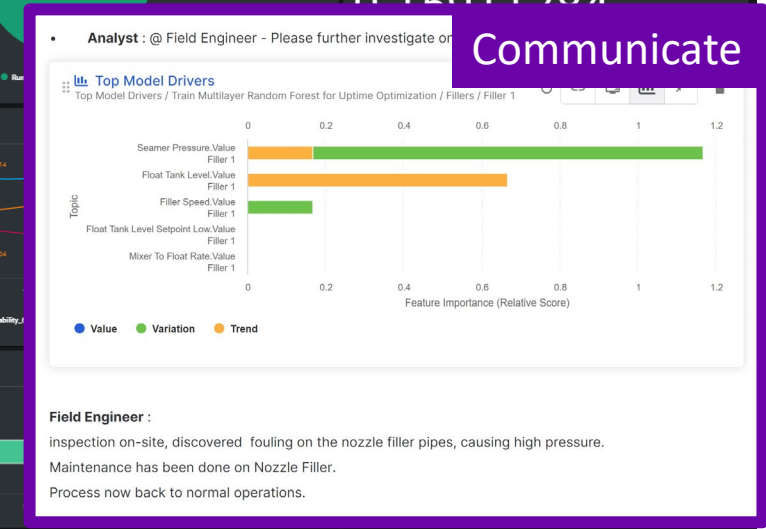
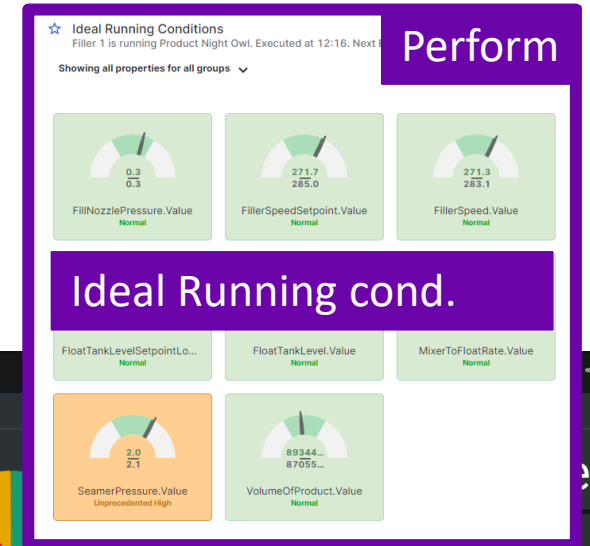
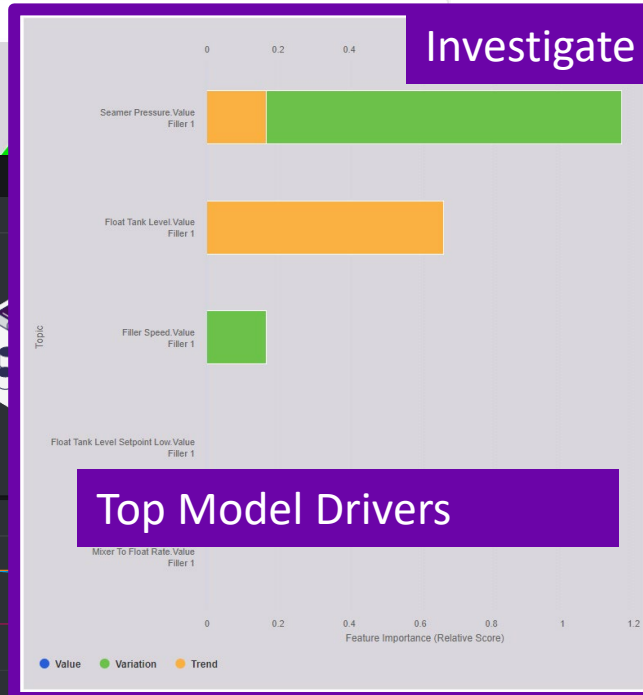
Incoming Event Field	TwinThread Field
startTime	startTime
endTime	endTime
utilizationStateType	reason

The dialog also includes an '+ Add row' button.

- MES Events attached to Cds Assets are automatically pulled into Advanced Analytics
- Default fields from the MES Event are mapped to the proper fields in the Advanced Analytics Events
- The user can modify or extend this mapping as needed
- Primary MES Events used by Advanced Analytics
 - MESEquipmentUtilizationHistory – defines the state of the Asset (ie. Running, idle, down, maintenance, etc)
 - MESMaterialProducedActual – defines the product being produced over each interval and the quality results

Predictive Uptime Monitoring

Monitoring Highlights and outcome



Nestlé: Harnessing advanced analytics and real-time data in the cloud to enhance product quality and minimize waste

Challenge

- Fully manual operation of the agglomeration process caused variability in product moisture and density
- Low product yield due to low moisture
- Inconsistent product caused unnecessary waste

Solution

- Deployed CONNECT and transferred data via AVEVA™ Historian. AVEVA™ Advanced Analytics was used to predict quality parameters of powder production and recommend optimal process setpoints, removing the need for resource-constrained on-premises systems to carry the additional burden of supporting this solution.

Results

- **A 10% savings on Nesquik powder in the trial, or 101g saved from every 1kg jar**
- **Consistently tighter jar-to-jar weight variation**
- **Improved product consistency and consumer satisfaction**
- **Less product waste on production and packaging lines**



“ Working with AVEVA’s Lighthouse team helped us to understand how we can realize even more value from our solution in the future. For instance, running the solution in the cloud means we can easily roll out the analytical model to other plants across different regions without needing to invest in additional on-premises infrastructure.

Greg O’Brien, Project Engineer and Project Owner, Nestlé

To learn more

Jean-pierre.caron@aveva.com

- Expo area
- Upcoming Related session
 - Wednesday 9:00 AM – 9:30 AM AVEVA's Industrial AI: Generate impact to achieve greater goals
 - Wednesday 13:15 PM – 13:45 PM Harnessing AVEVA Advanced Analytics for Enhanced Quality Control powered by CONNECT at Coromandel International Limited
 - Wednesday 14:45 PM – 15:15 PM Nestlé: Harnessing advanced analytics and real-time data in the cloud to enhance product quality and minimize waste
- Past Presentation (Post conference Review)
 - Tuesday 1:30 PM – 2:00 PM AVEVA's Reimagining the AVEVA MES portfolio to support the transformation objectives of modern enterprises
 - Tuesday 2:15 PM – 2:45 PM Amcor : Enterprise analytics and visualization of MES/process data
 - Tuesday 3:15 PM – 3:45 PM AVEVA hybrid MES and CONNECT data and visualization services
 - Tuesday 3:15 PM – 3:45 PM AVEVA: AI-driven industrial optimization at scale with CONNECT
- Contact me (Will bring the required people)

HEROES HQ

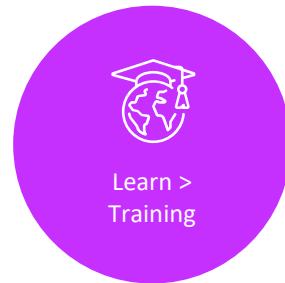
Your one-stop location for all things HMI / SCADA technical enablement - designed and meant to empower **YOU, the technical superhero!**



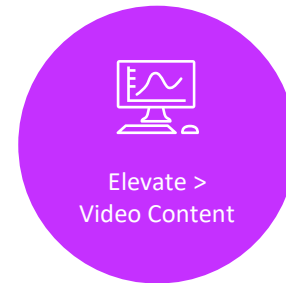
Ask > Forums



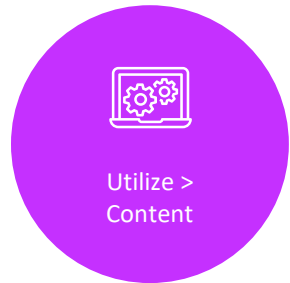
Discover > Products



Learn > Training



Elevate > Video Content



Utilize > Content



Socialize > Comms



Suggest > Idea Portals



Success > Recognition



Questions?

Please wait for the microphone.
State your name and company.



Please remember to...

Navigate to this session in the mobile app to complete the survey.



Thank you!

This presentation may include predictions, estimates, intentions, beliefs and other statements that are or may be construed as being forward-looking. While these forward-looking statements represent our current judgment on what the future holds, they are subject to risks and uncertainties that could result in actual outcomes differing materially from those projected in these statements. No statement contained herein constitutes a commitment by AVEVA to perform any particular action or to deliver any particular product or product features. Readers are cautioned not to place undue reliance on these forward-looking statements, which reflect our opinions only as of the date of this presentation.

The Company shall not be obliged to disclose any revision to these forward-looking statements to reflect events or circumstances occurring after the date on which they are made or to reflect the occurrence of future events.

 [linkedin.com/company/aveva](https://www.linkedin.com/company/aveva)

 [@avevagroup](https://twitter.com/avevagroup)

ABOUT AVEVA

AVEVA is a world leader in industrial software, providing engineering and operational solutions across multiple industries, including oil and gas, chemical, pharmaceutical, power and utilities, marine, renewables, and food and beverage. Our agnostic and open architecture helps organizations design, build, operate, maintain and optimize the complete lifecycle of complex industrial assets, from production plants and offshore platforms to manufactured consumer goods.

Over 20,000 enterprises in over 100 countries rely on AVEVA to help them deliver life's essentials: safe and reliable energy, food, medicines, infrastructure and more. By connecting people with trusted information and AI-enriched insights, AVEVA enables teams to engineer efficiently and optimize operations, driving growth and sustainability.

Named as one of the world's most innovative companies, AVEVA supports customers with open solutions and the expertise of more than 6,400 employees, 5,000 partners and 5,700 certified developers. The company is headquartered in Cambridge, UK.

Learn more at www.aveva.com