



AVEVA WORLD

AVEVAWORLD

APRIL 8, 2025

AVEVA™ InTouch HMI

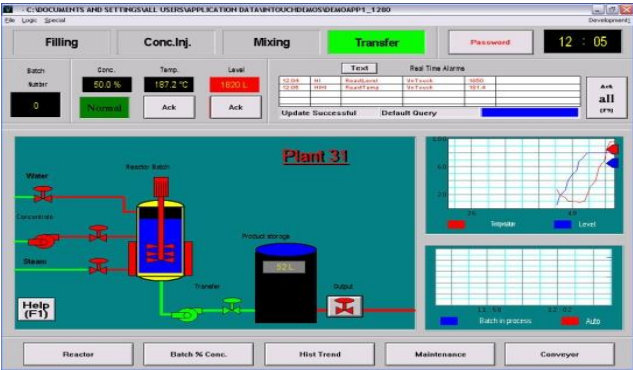
Deep dive into latest enhancements

Rickard Norin

AVEVA

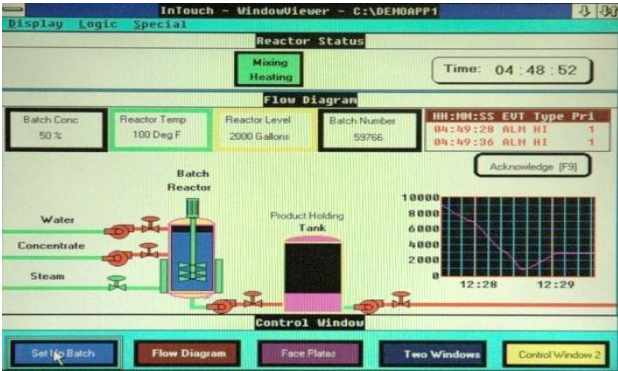
An amazing journey

1990



2010

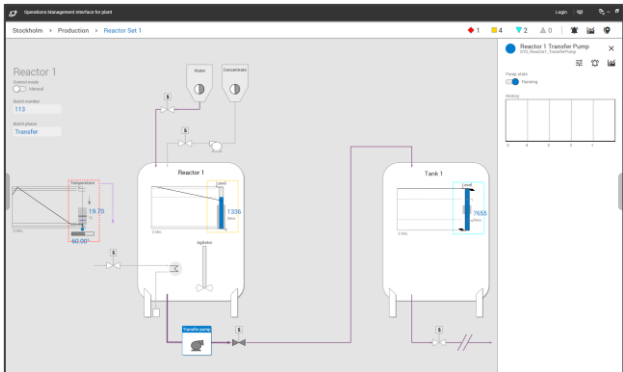
2000



An amazing journey



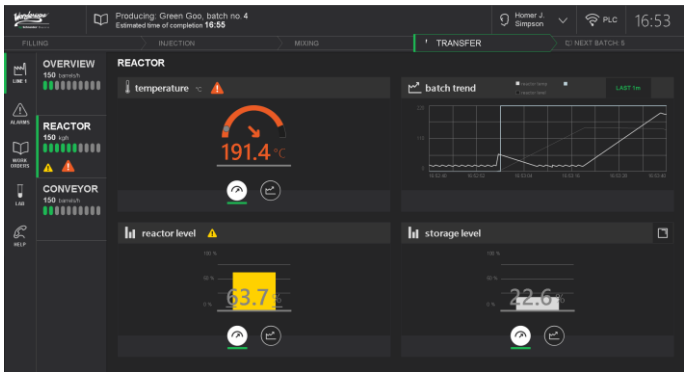
2010



2024

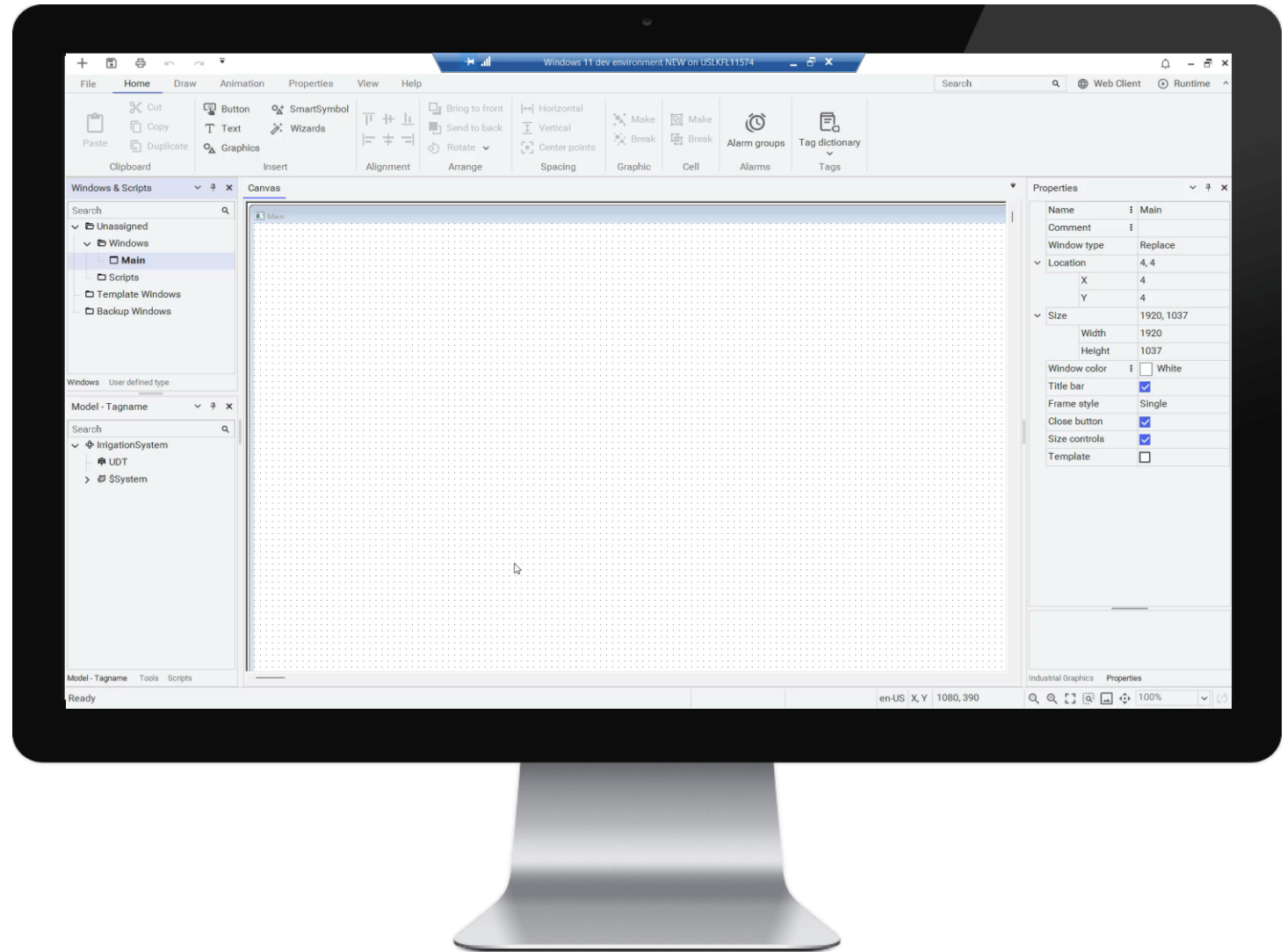


2020



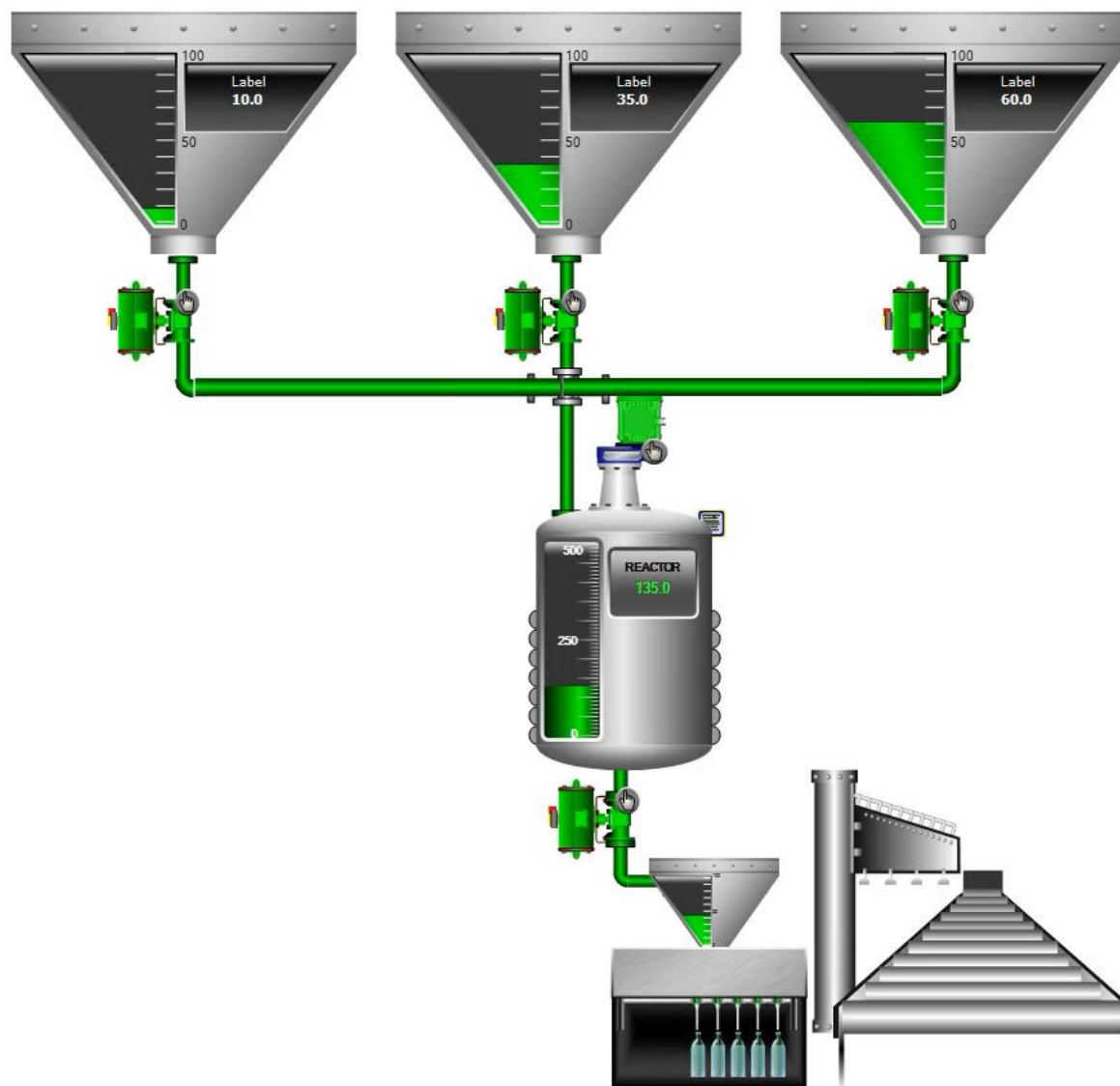
User-Defined Types

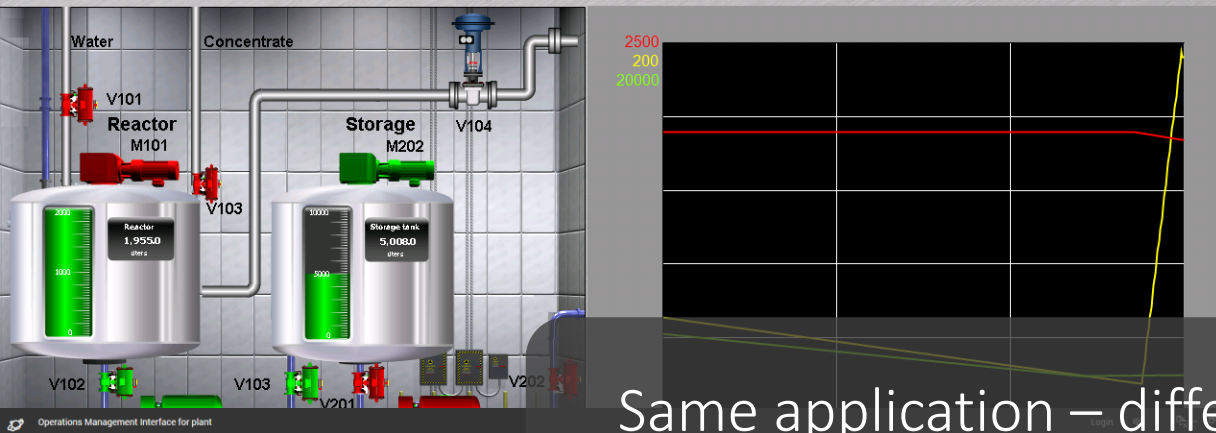
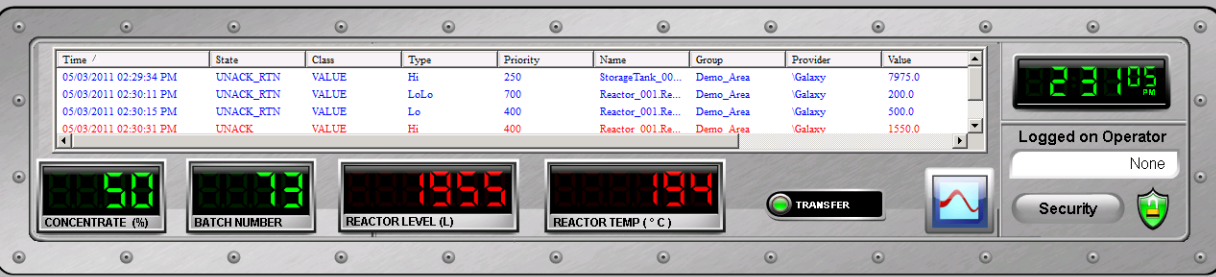
- Model reusable templates for structured data types such as equipment and sensors
- Rapidly create structured instances from templates and apply instance-specific settings
- Link to graphics and easily switch between instances with OwningObject property





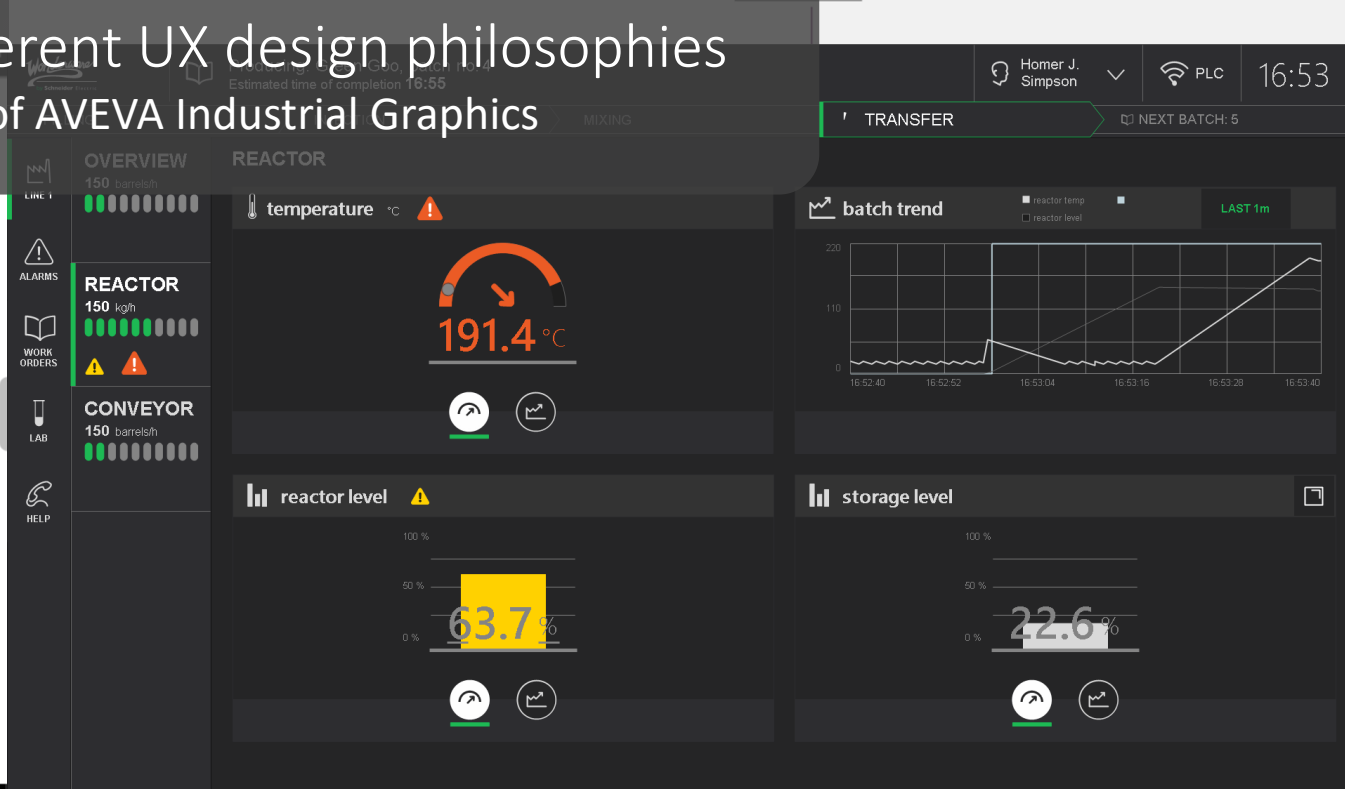
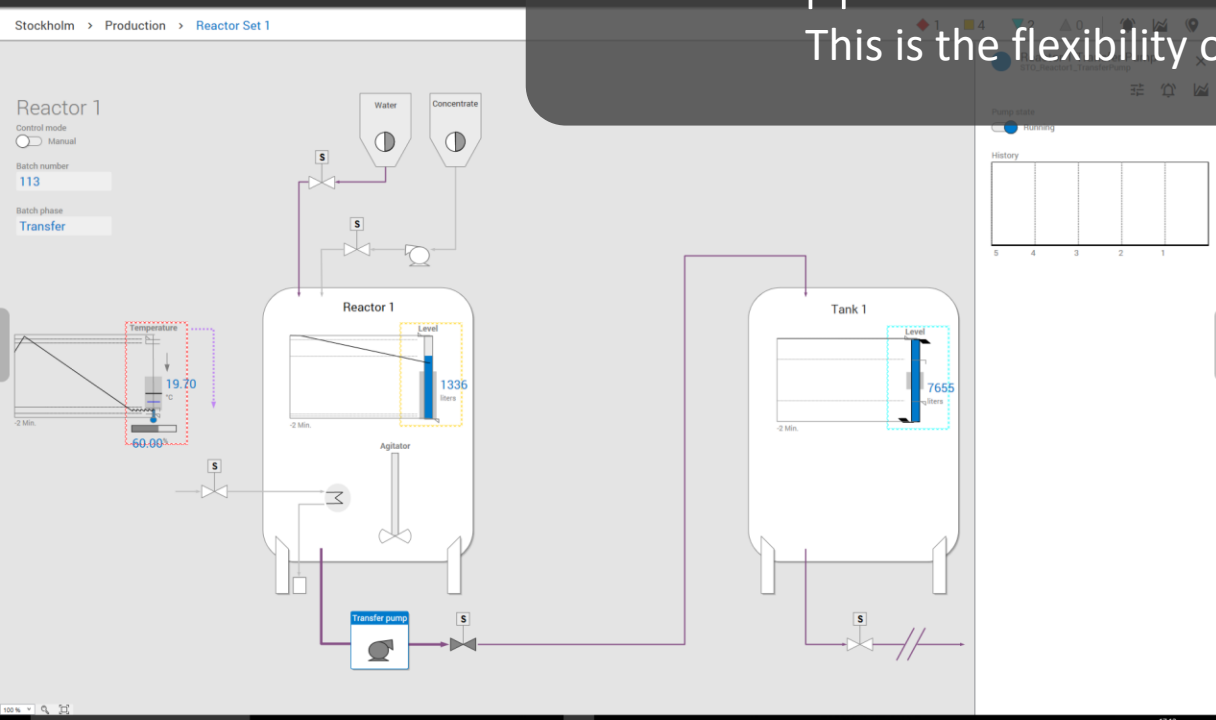
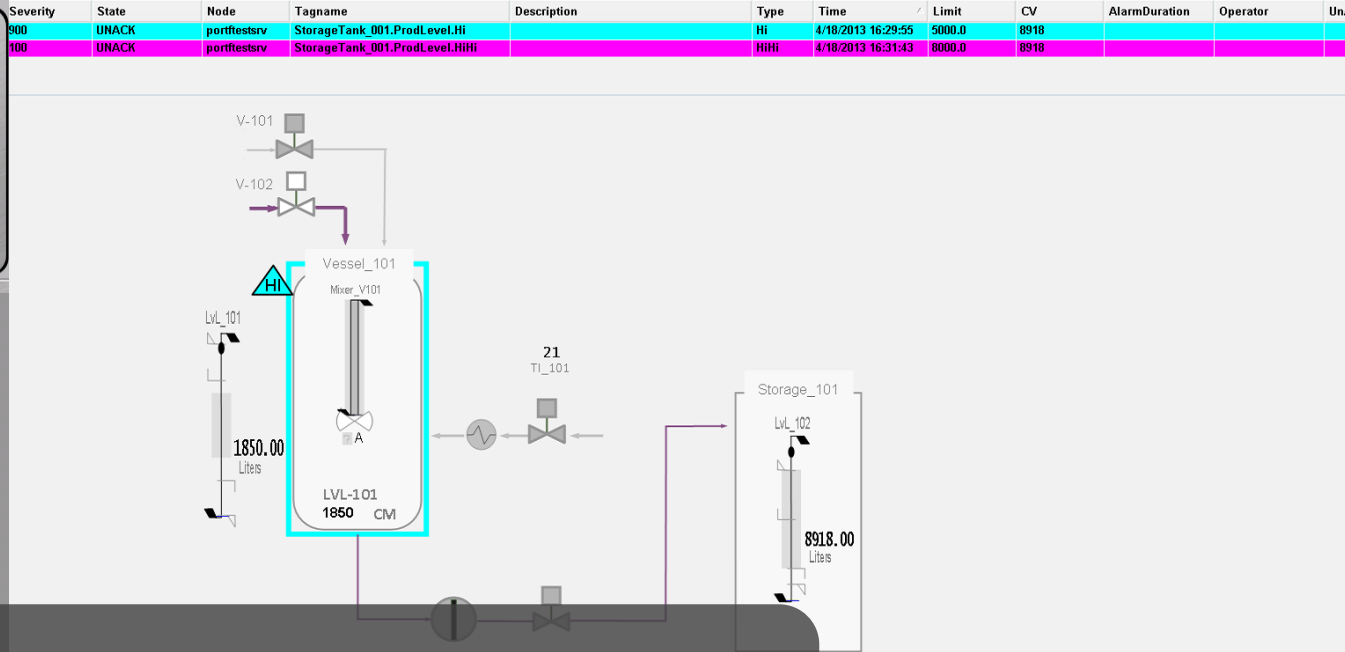
InTouch:BatchPlant



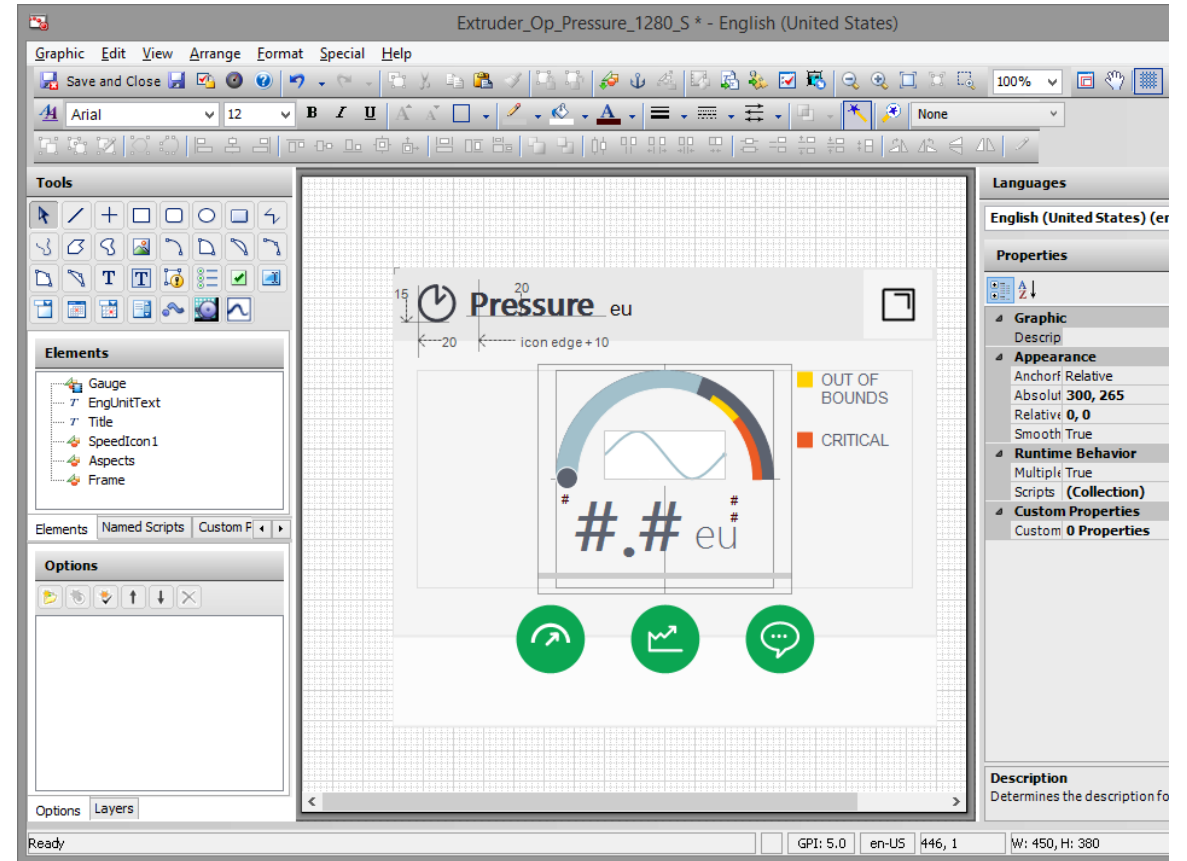


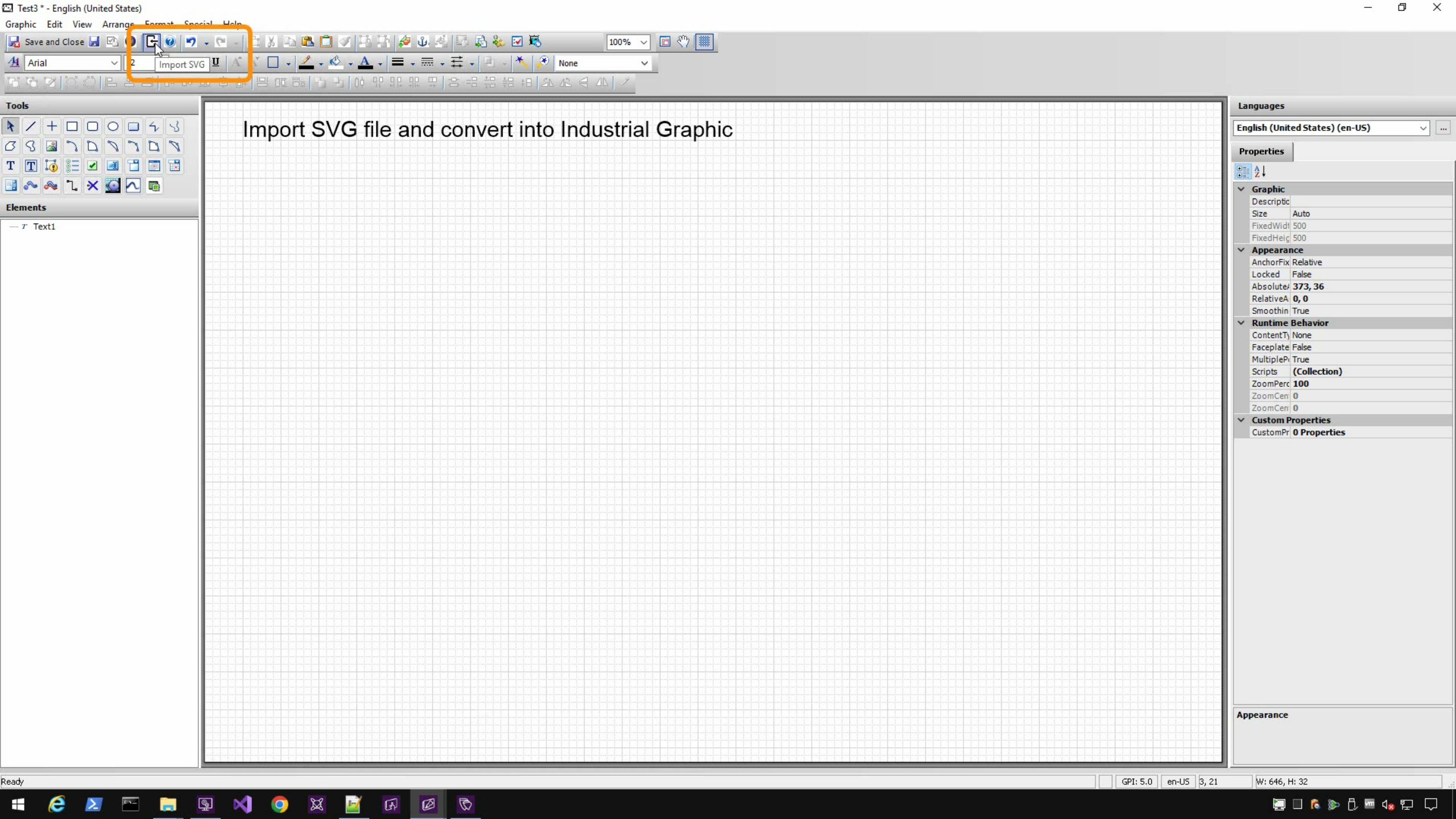
Same application – different UX design philosophies

This is the flexibility of AVEVA Industrial Graphics



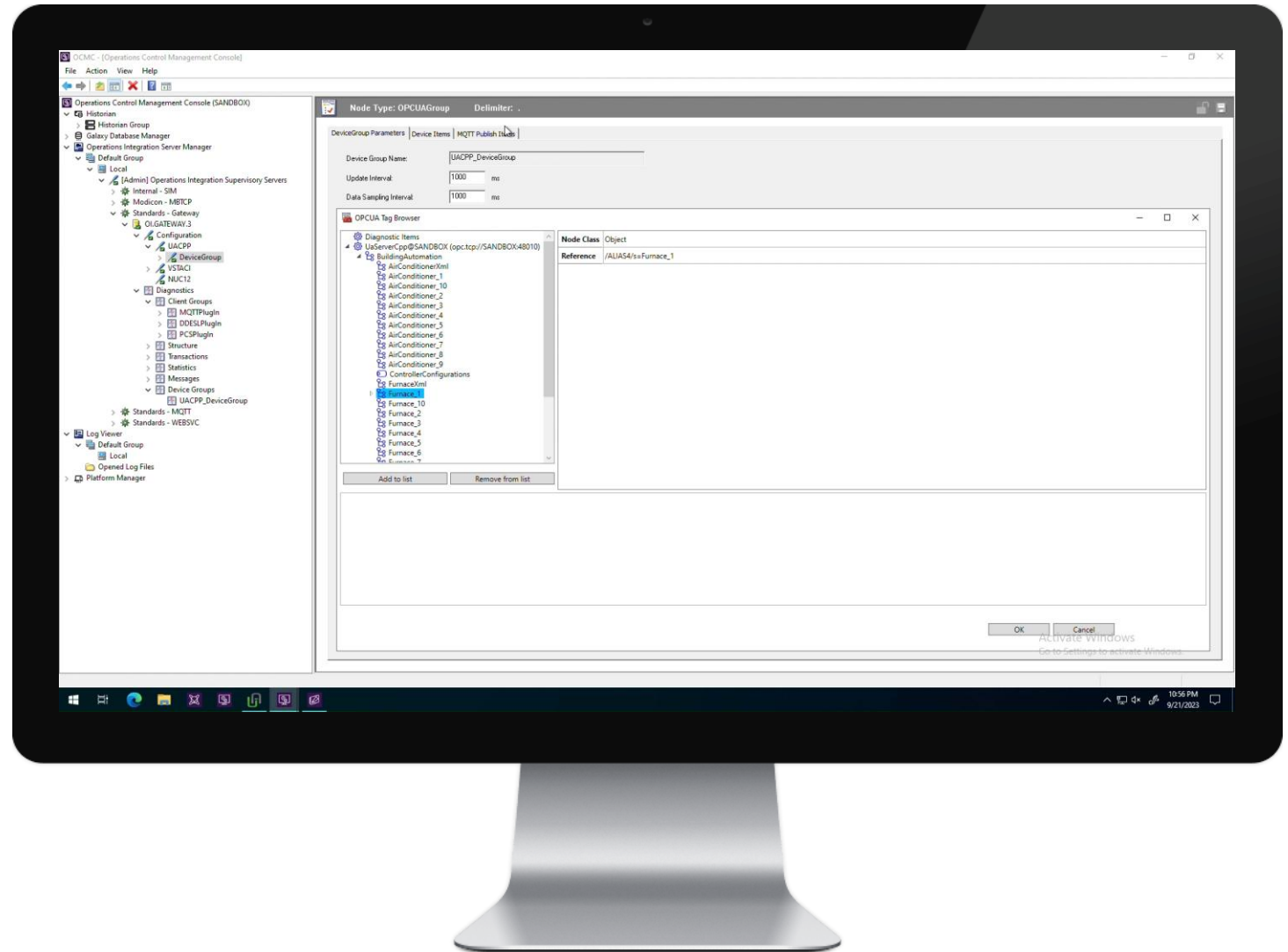
Collaborative design & development





OPC UA tag creation

- Browse connected OPC UA servers
- Select attributes and drag-n-drop into InTouch Model
- Automatic creation of tag, with IO binding and alarm group



New alarm state LATCHED

- New optional alarm state LATCHED
- When enabled, alarms will remain visible in the alarm client until Dismissed by a user, even if the alarm is Acknowledged and Returned

User	Priority	State	Node	Group	Name	AlarmComment	Type	TimeLCT	Limit	Current	AlarmDuration	Operator	UnAckDuration
0	500	UNACK	LorenQA1	Tank1	Tag1		LO	11/8/2022 1:02:12 PM	35	25	000 00:00:00.000	None	000 00:00:00.000
0	500	UNACK	LorenQA1	Tank1	Tag2		LO	11/8/2022 1:02:12 PM	35	25	000 00:00:00.000	None	000 00:00:00.000
0	500	UNACK	LorenQA1	Tank1	Tag3		LO	11/8/2022 1:02:12 PM	35	25	000 00:00:00.000	None	000 00:00:00.000
0	299	UNACK	LorenQA1	Tank1	Tag4		LO	11/8/2022 1:02:12 PM	35	25	000 00:00:00.000	None	000 00:00:00.000
0	500	UNACK	LorenQA1	Tank2	Tag5		LO	11/8/2022 1:02:12 PM	35	25	000 00:00:00.000	None	000 00:00:00.000
0	500	UNACK	LorenQA1	Tank2	Tag6		LO	11/8/2022 1:02:12 PM	35	25	000 00:00:00.000	None	000 00:00:00.000
0	500	UNACK	LorenQA2 10.76.46.78	Tank1	Tag7		LO	11/8/2022 1:02:12 PM	35	25	000 00:00:00.000	None	000 00:00:00.000
0	500	UNACK	LorenQA1	Tank1	Tag8		LO	11/8/2022 1:02:12 PM	35	25	000 00:00:00.000	None	000 00:00:00.000

Displaying 1 to 9 of 9 alarms | Query: Default | Filter: 100% Complete | Pacific Time (US, Canada)

Dismiss Group()

Dismiss Selected()

Dismiss Priority()

Dismiss SelectedPriority()

Dismiss SelectedTag()

Dismiss Tag()

Dismiss All()

Dismiss Visible()

Web browser access

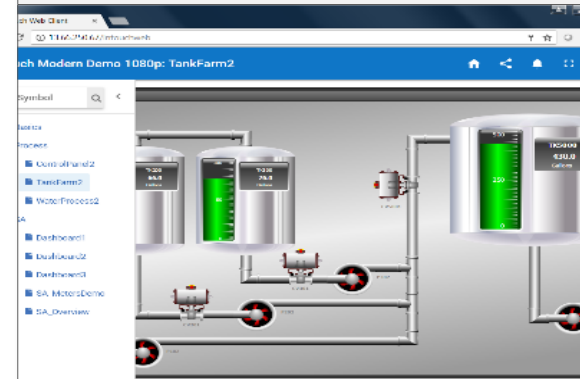
InTouch Access Anywhere



- Access to InTouch application
- Works with InTouch and OMI
- Multi-Touch & gesture support
- RDS based
- Microsoft Server OS
- Read Write or Read Only



InTouch Web Client

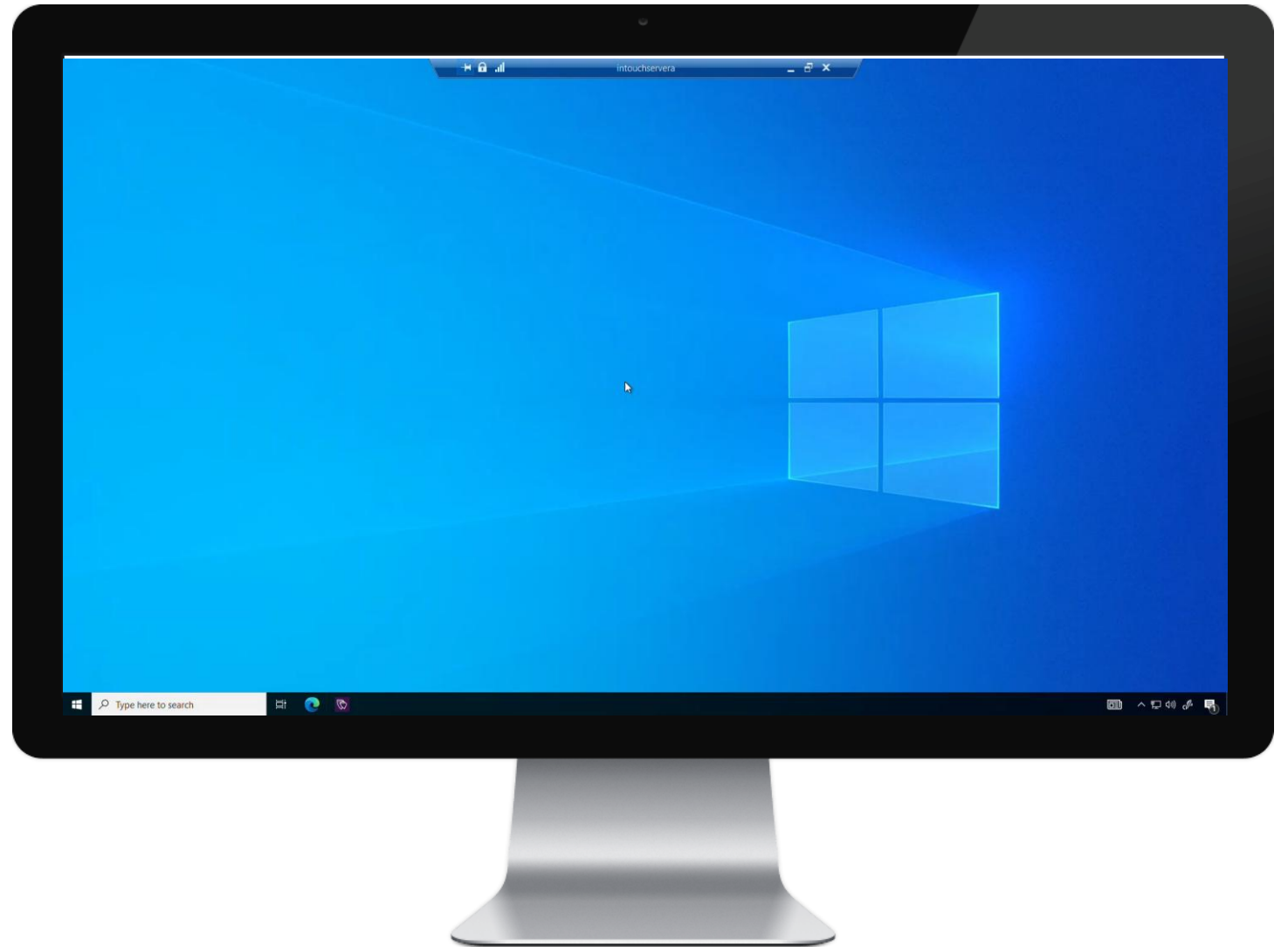


- Access to graphics and windows
- Works with InTouch only
- Low Footprint (alternative ITAA)
- Web server based
- Server or Client Microsoft OS
- Read Write or Read Only



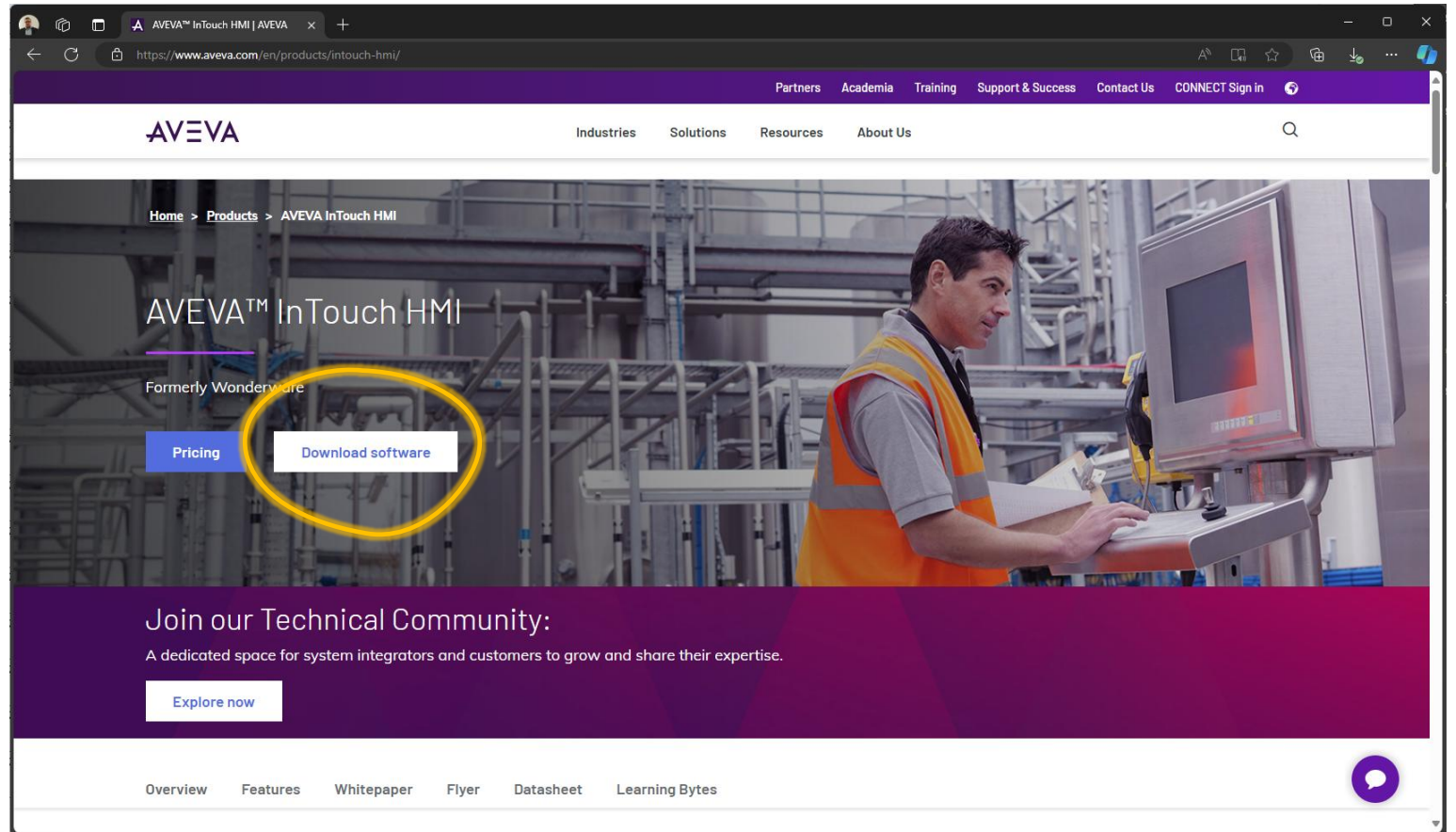
InTouch Web

- Access InTouch via Web Browser with minimal footprint.
- Access across DMZ with Reverse Proxy in compliance with good network security practices
- Localization Support (German, Japanese, French, Simplified Chinese)



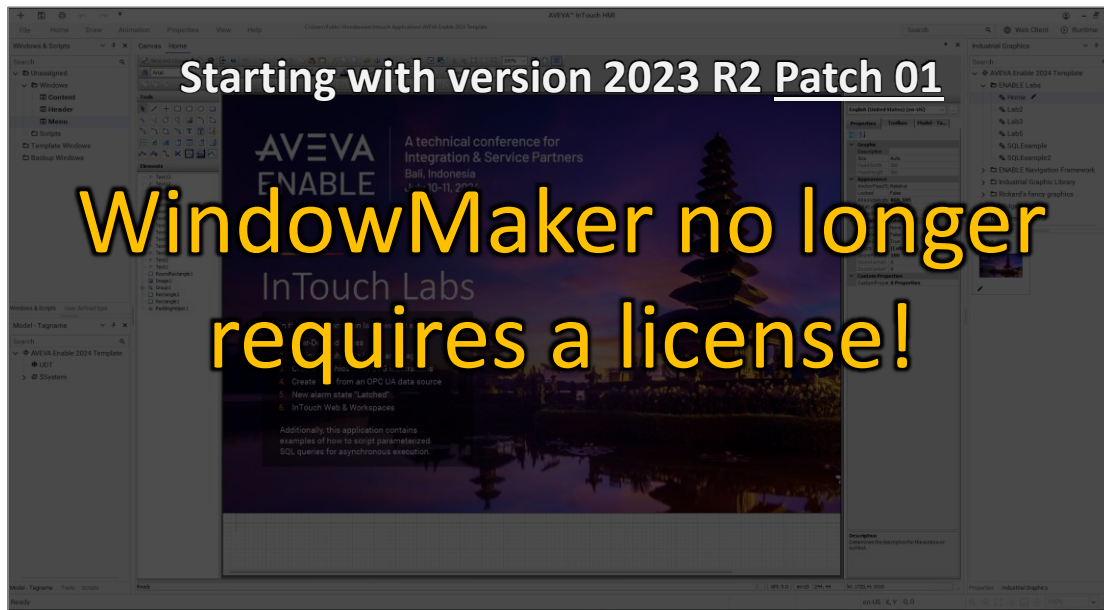
Self-service access to InTouch at aveva.com

DOWNLOAD FROM PRODUCT PAGE
AFTER SIMPLE SELF-SERVICE
REGISTRATION



No license? No problem!

Development - WindowMaker

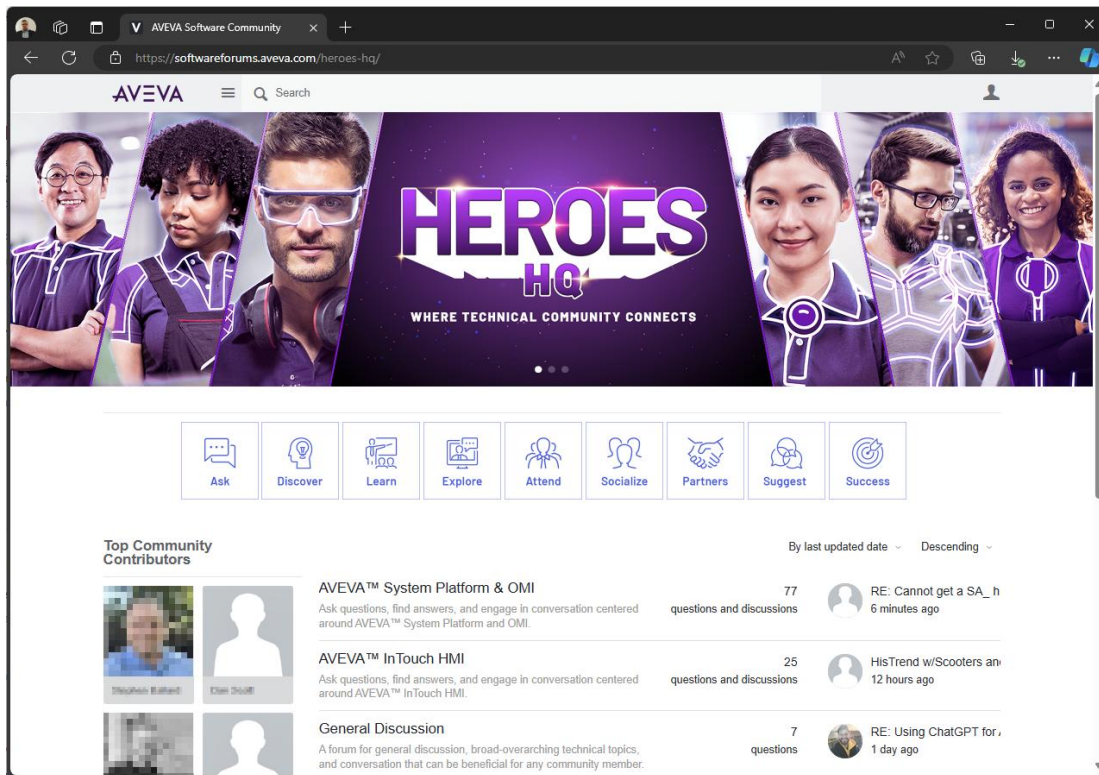


Runtime - WindowViewer

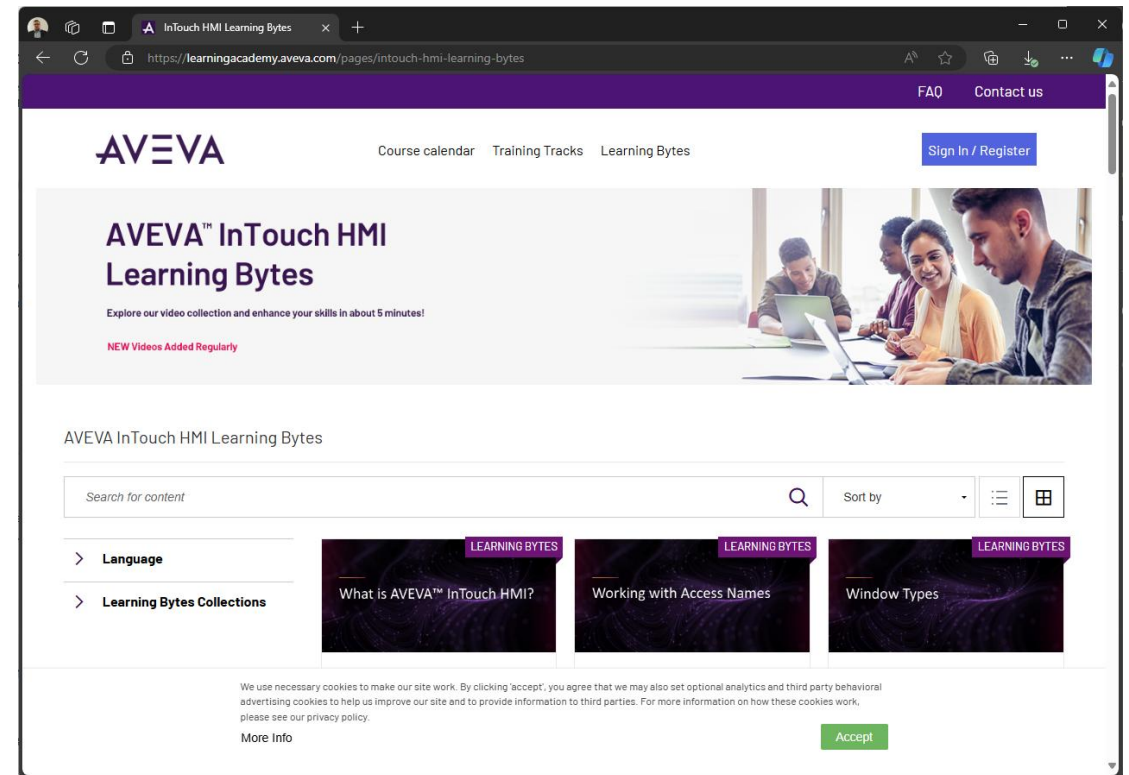


Engage with community for inspiration, learning, discussions

<https://softwareforums.aveva.com/heroes-hq/>

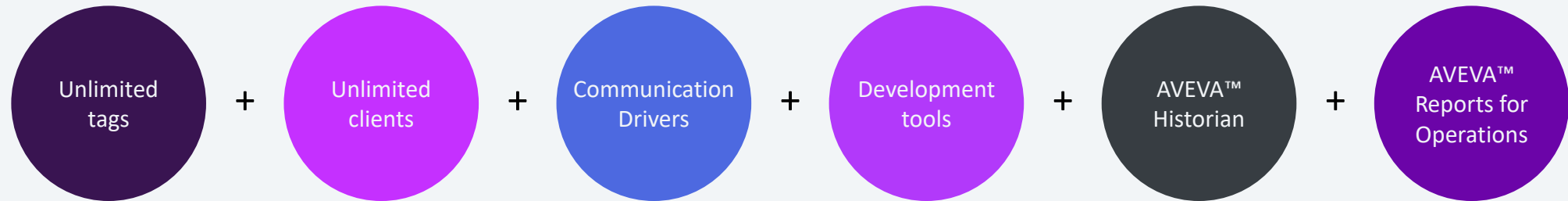


<https://learningacademy.aveva.com/pages/intouch-hmi-learning-bytes>



Pricing and purchasing news

InTouch Unlimited



InTouch *Unlimited* Standard Perpetual license

Build efficient HMIs, communicate with automation devices and controllers, and log historical process data as well as alarms and events

\$12,000

InTouch *Unlimited* Professional Perpetual license

Scale up to data-intensive applications and manage multi-node deployment. Create and share self-service real-time dashboards. Expose application data through OPC UA Server.

\$20,000

InTouch *Unlimited* Premier Subscription

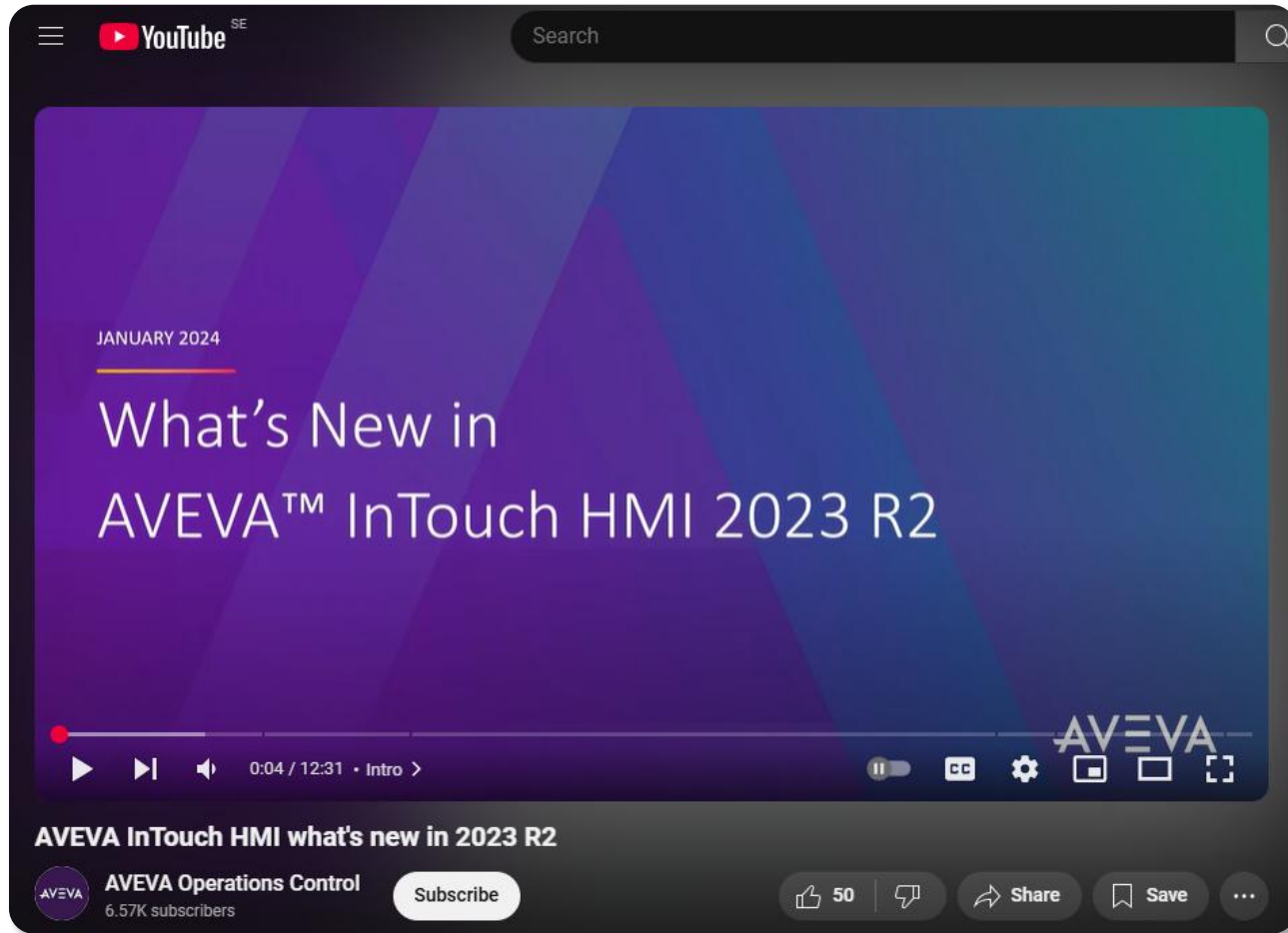
Pay-as-you-go commercial model. Same feature set as Professional, adding Unlimited Historian.

Contact distributor

From small to unlimited everything

Features	AVEVA™ Operations Control (subscription only)	AVEVA™ InTouch Unlimited Premier (subscription only)	AVEVA™ InTouch Unlimited Professional (\$20,000)	AVEVA™ InTouch Unlimited Standard (\$12,000)	AVEVA™ InTouch Workstation 1k (\$1,795)
Number of tags	Unlimited	Unlimited	Unlimited	Unlimited	1,000
Number of web clients	Unlimited	Unlimited	Unlimited	Unlimited	1
Number of RDS clients	Unlimited	Unlimited	Unlimited	1	1
Historian Server tags	Unlimited	Unlimited	5,000 tags	500 tags	n/a
Licensed nodes	Unlimited	2	1*	1*	1*
Communication drivers	Professional Edition	Professional Edition	Professional Edition	Standard Edition	Standard Edition
Reports for Operations	Included	Included	Included		
SaaS entitlements (Teamwork, Insight, Dev Studio)	Included				

This and more on YouTube



Big picture roadmap

SUBJECT TO CHANGE AND REPRIORITIZATION

Acceleration

CONNECT-accelerated development and lifecycle management, development assistance through AI/ML, InTouch/Edge unification, continued modernization and expanded open extensibility

Independence

Platform independence, continued CONNECT-accelerated management of lifecycle and software estate

Hybridization

Cloud/edge hybrid solutions

Modernization

Modernized installer, rapid content creation from OPC UA & MQTT sources, workflow enhancements, open scripting, unified visualization





Operations Control Technical Symposium

Day 3, Thurs
April 10th

Unlocking Digital Transformation with Operations Control & UNS Architecture: 10:00 – 12:15

Dive into a real-world, real-time UNS implementation, exploring key takeaways and use cases from Provelt! 2025

Feedback Session: 1:15 – 2:15

Share your thoughts, explore new ideas, and help shape the future of our solutions in a dynamic, engaging setting

Networking & Social Hour: 2:15 – 3:00

Visit the Heroes HQ booth and celebrate with our raffle prize giveaways along with free drinks and merch!

AVEVA

Questions?



Please wait for the microphone.
State your name and company.

Please remember to...

Navigate to this session in the
mobile app to complete the survey.

Visit us at our Operations Control Technical
Symposium this Thursday (Day 3)!

Thank you!



This presentation may include predictions, estimates, intentions, beliefs and other statements that are or may be construed as being forward-looking. While these forward-looking statements represent our current judgment on what the future holds, they are subject to risks and uncertainties that could result in actual outcomes differing materially from those projected in these statements. No statement contained herein constitutes a commitment by AVEVA to perform any particular action or to deliver any particular product or product features. Readers are cautioned not to place undue reliance on these forward-looking statements, which reflect our opinions only as of the date of this presentation.

The Company shall not be obliged to disclose any revision to these forward-looking statements to reflect events or circumstances occurring after the date on which they are made or to reflect the occurrence of future events.

 [linkedin.com/company/aveva](https://www.linkedin.com/company/aveva)

 [@avevagroup](https://twitter.com/avevagroup)

ABOUT AVEVA

AVEVA is a world leader in industrial software, providing engineering and operational solutions across multiple industries, including oil and gas, chemical, pharmaceutical, power and utilities, marine, renewables, and food and beverage. Our agnostic and open architecture helps organizations design, build, operate, maintain and optimize the complete lifecycle of complex industrial assets, from production plants and offshore platforms to manufactured consumer goods.

Over 20,000 enterprises in over 100 countries rely on AVEVA to help them deliver life's essentials: safe and reliable energy, food, medicines, infrastructure and more. By connecting people with trusted information and AI-enriched insights, AVEVA enables teams to engineer efficiently and optimize operations, driving growth and sustainability.

Named as one of the world's most innovative companies, AVEVA supports customers with open solutions and the expertise of more than 6,400 employees, 5,000 partners and 5,700 certified developers. The company is headquartered in Cambridge, UK.

Learn more at www.aveva.com