



**AVEVAWORLD**  
PARIS

---

# AI use cases for HMI/SCADA

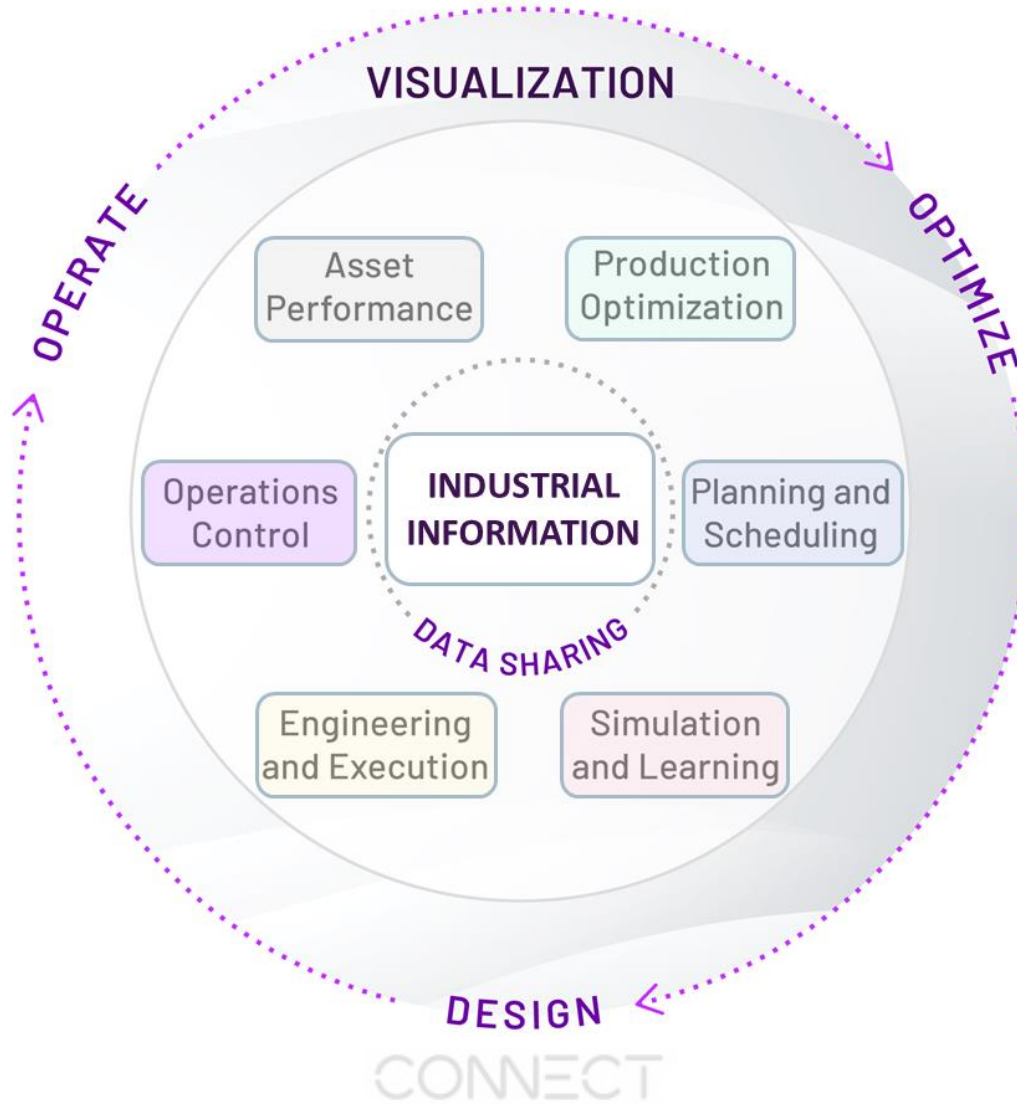
Generate Impact to Achieve Greater Goals

Brian Leonard, Product Manager at AVEVA

AVEVA

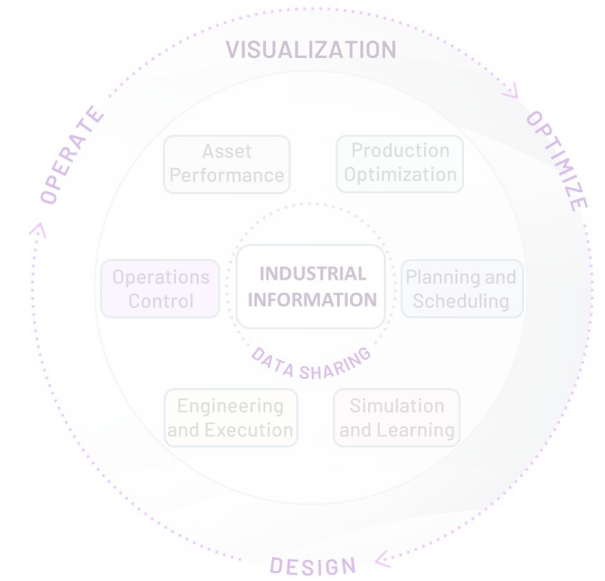
# AVEVA AI Today

18 commercial AI solutions



- E3D Whitespace Optimizer
- E3D Generative Design
- Point Cloud Manager (Intelligent Point Cloud)

- Grey-box Modeling (carbon capture, etc)
- AI-infused Dynamic Simulation

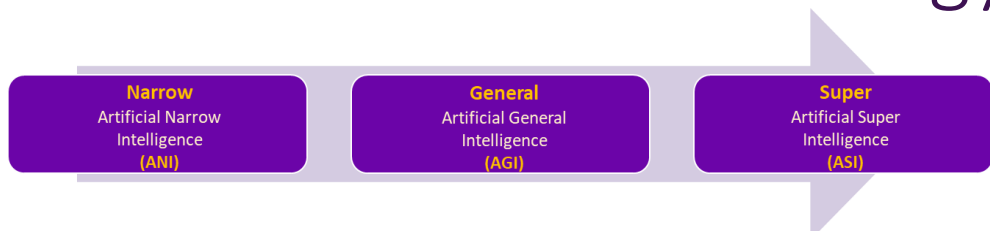


- Automated Analytics
- Guided Analytics
- Predictive Analytics/Maintenance
- Asset Prescriptive Analytics

- Process Optimization
- Predictive Quality/Throughput (batch)
- Remaining Useful Life Estimation (RULE)
- Predictive Asset Optimization (risk-based)

- Schedule AI Assistant
- Realtime Crude Assistant

# AVEVA Industrial AI Strategy

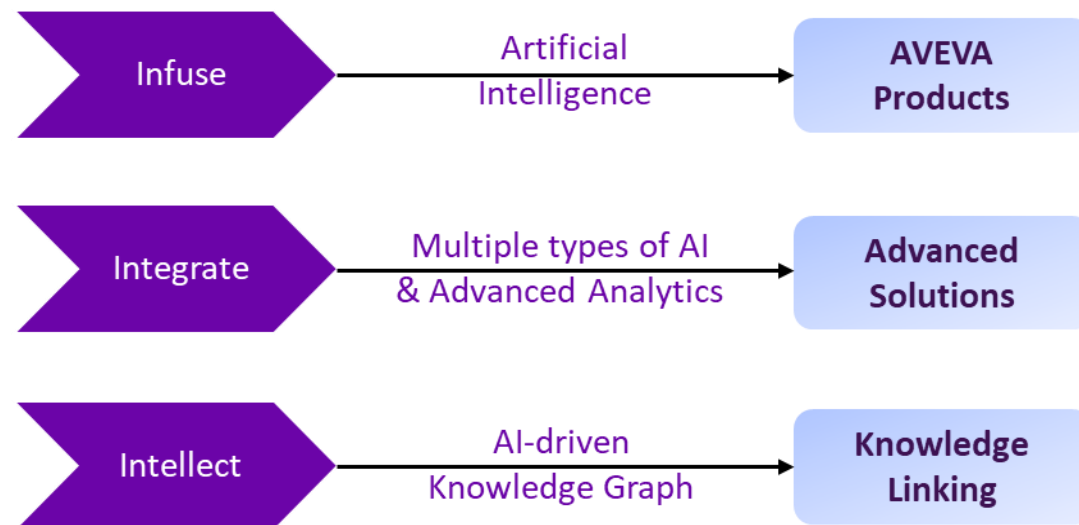
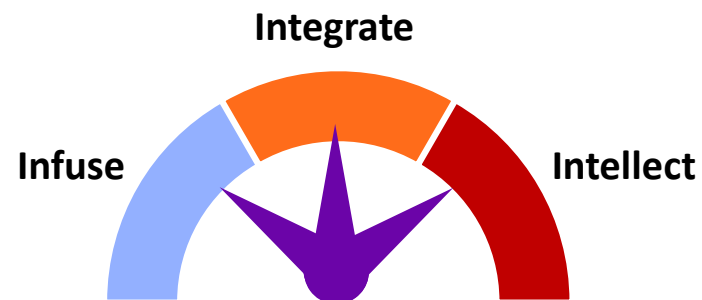


## Vision

- Help industrial customers provide a **Sustainable Future**
- Drive the **Autonomous Plant**
- Create comprehensive **Digital Intellect**



## Strategy



AI

# DESIGN / BUILD

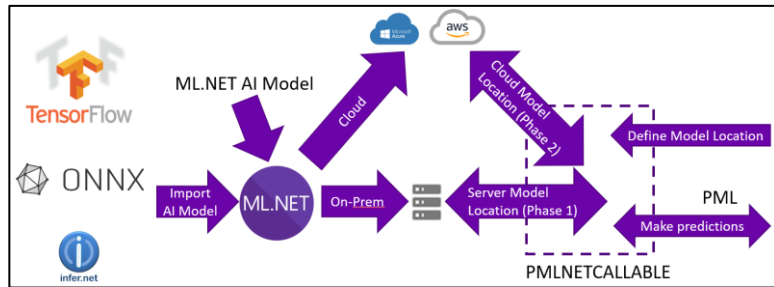


Available today

# What can you do today?

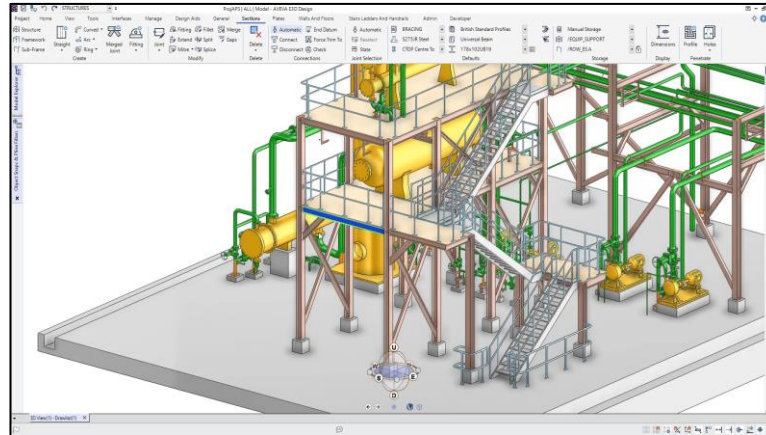
## AI in AVEVA™ Unified Engineering (E3D Design)

### Utilizing ML.NET models



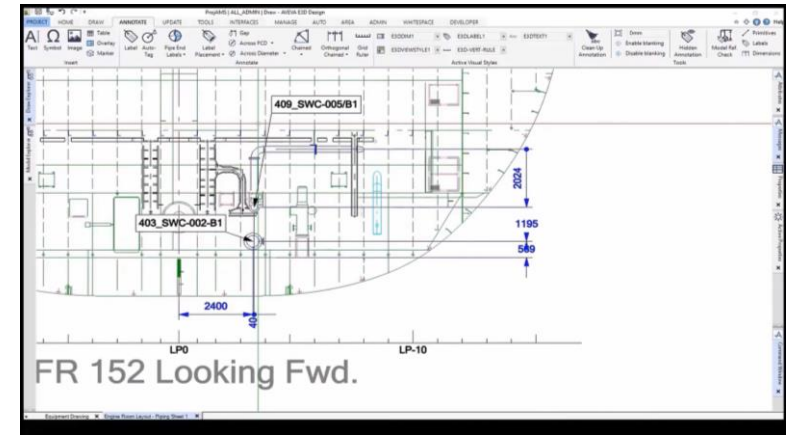
- Ability to import trained ML models with Microsoft ML.NET models
- Direct import and consumption via a PMLNETCALLABLE object
- Easy to execute from model module interface, via the Machine Learning button in the Developer tab

### Rules Manager



- Speed up 3D design process by configuring logical rules
- Out-of-the-box compliance for created elements
- Automatic execution as design elements are created
- Create rules for design properties of
  - structural joints
  - fittings and design templates
- Compatible with automatic joint features

### Whitespace Optimizer



- Automatic location and efficient utilization of drawing whitespace
  - Easy to use user interface
  - Batch mode possible
  - Multiple files from across databases can be bundled
- Replaces manual effort required to 'finish' drawing deliverables
- An add-on product for AVEVA™ E3D Design that uses AI engine via our secure Cloud platform AVEVA Connect

AI

OPERATE /  
OPTIMIZE



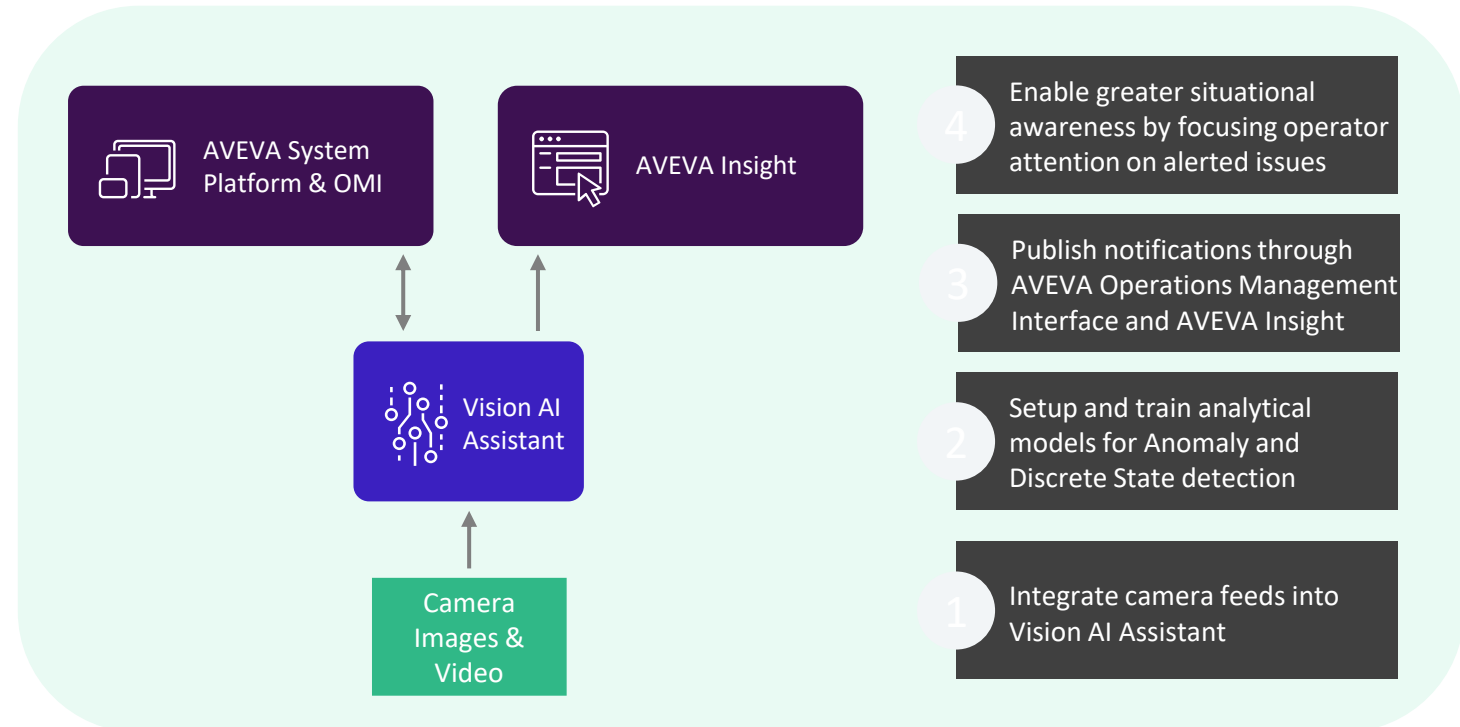
Available today

# Vision AI Assistant

## Visual Anomaly Detection in HMI/SCADA

Vision AI Assistant applies image processing models to real-time camera feeds automatically identifying and reporting anomalies or inconsistencies from learned image states.

- Monitor real-time image streams
- Employs deep learning to train and deploy machine learning models
- Provides alerts and notifications to operators
- Easy-to-use web-based interface
- Designed to work in low latency industrial environments
- Helps operators maintain attention on their tasks without having to continuously monitor live camera feeds, enhancing their situational awareness
- Integrated with AVEVA System Platform & OMI and AVEVA Insight



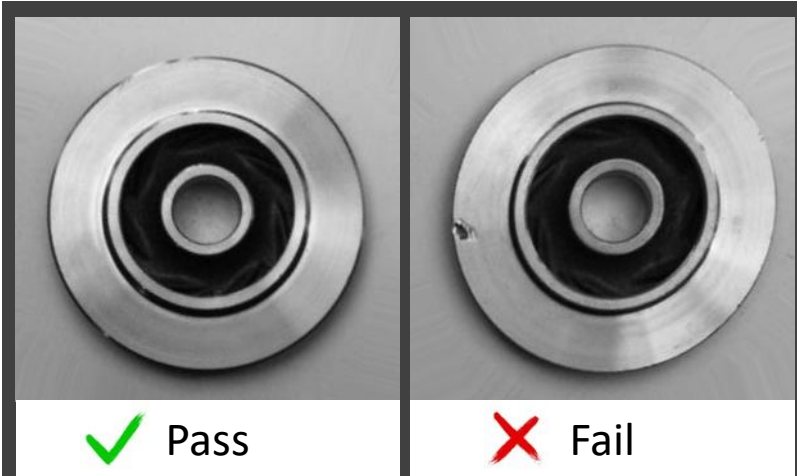




Available today

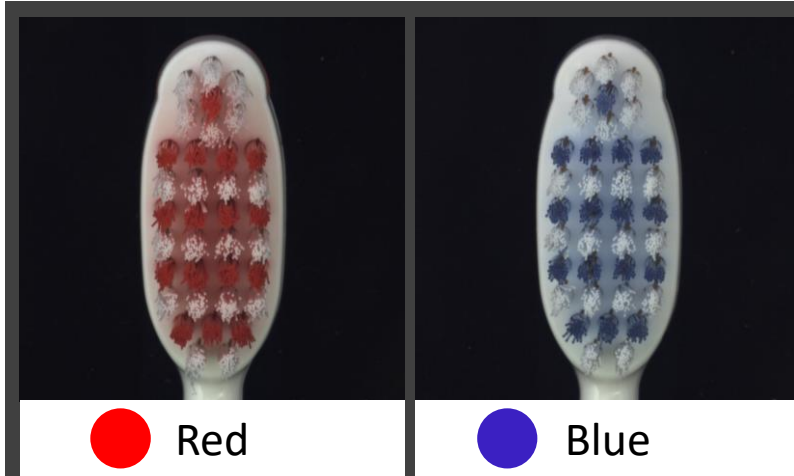
# Analytic modes – Vision AI Assistant skill types

Use images from existing general-purpose cameras and convert them into image classification-based analytics



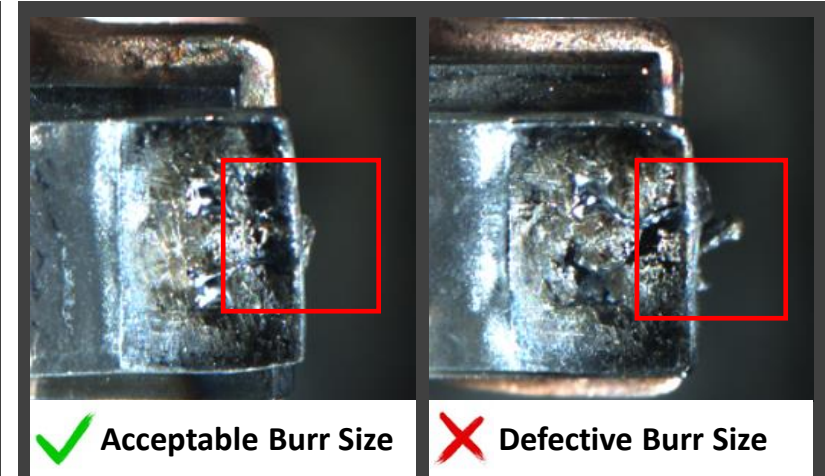
## Anomaly Detection Model

Use when there are plenty of images available to represent the 'normal' state, and a vast array of negative states for which images are not readily available.



## Discrete State Detection Model

Use when two states are known and identifiable to train the learning algorithm.



## User Defined Pipeline

Self-specify a series of automated steps in a chain for pre-processing and transformation of desired images. Powerful for a range of use cases: measuring dimensions, determining color, finding defects, and more.



Available today

# Deploying Vision AI Assistant within AVEVA™ System Platform

## AVEVA System Platform - Vision AI Assistant OMI App (On Premises)

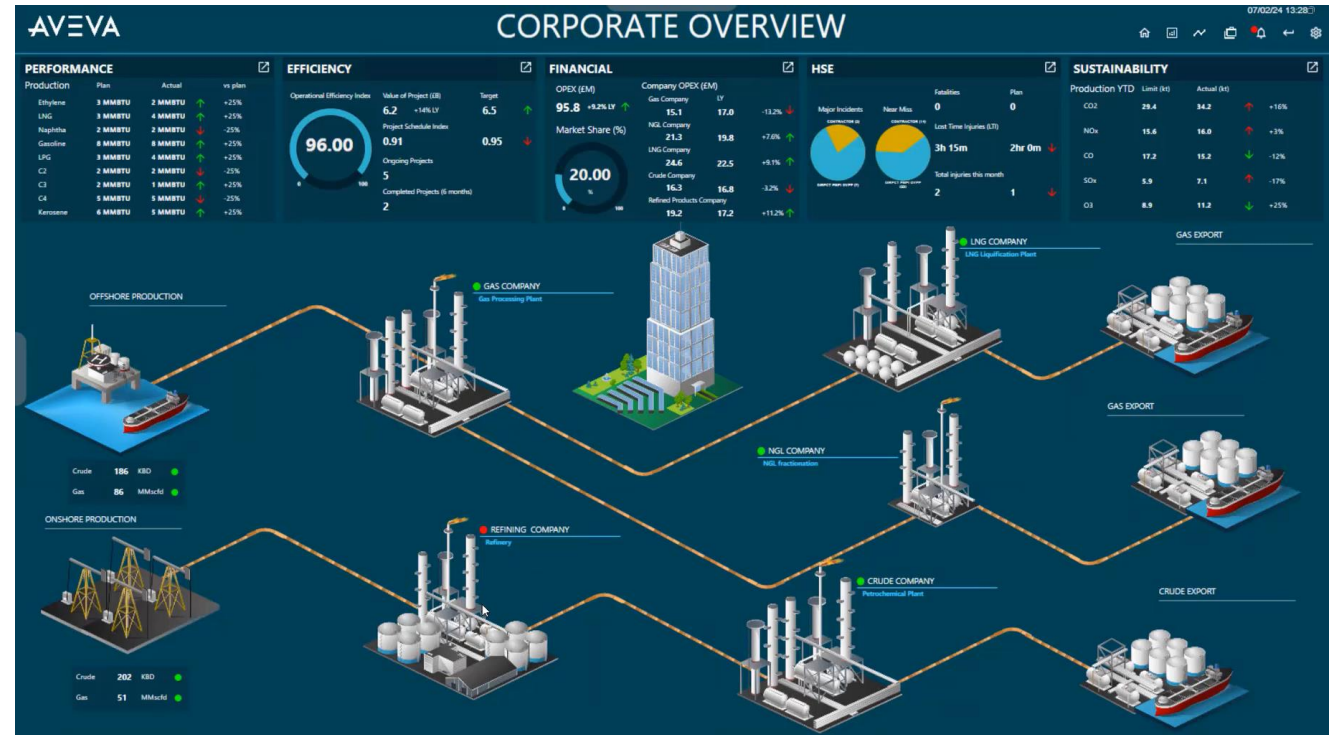
- Operational view of anomalies/classifications
- Review image classification results

## AVEVA Insight – Vision AI Assistant OMI App (Cloud)

Operational view with data and visual anomaly results shown in a consolidated list to investigate root cause

## Vision AI Assistant Web Client (On Premises)

- Configure, train, preview, deploy models
- Review image classification results
- Retrain and compare model results

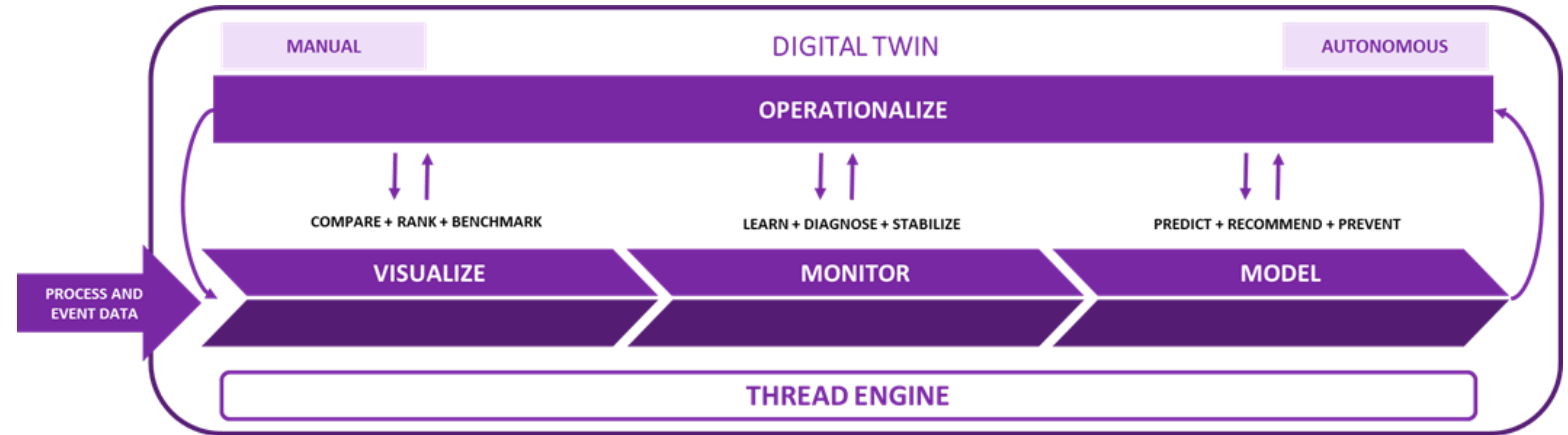




Available today

# AVEVA™ Advanced Analytics

- **Improve quality\***, throughput, energy efficiency, uptime, asset life
- **Reduce unplanned downtime**
- Complete framework for Analytics
  - Adapters for several source types in addition to CONNECT data services(native)
  - Calculation engine with flexible equations, statistics, data flows, scripting, etc. (aka Threads)
  - Flexible AI applications, from easy wizard configuration, to data science scripting
  - **Analysis of historical and current data in various tables and charts with operational recommendations**
  - Alert and incident management
  - Automated ML model refresh
  - Scale across thousands of assets or processes





Available today

# AVEVA™ Predictive Analytics

## Optimize your asset reliability, maintenance and performance

Achieve fast time to value through out-of-the-box

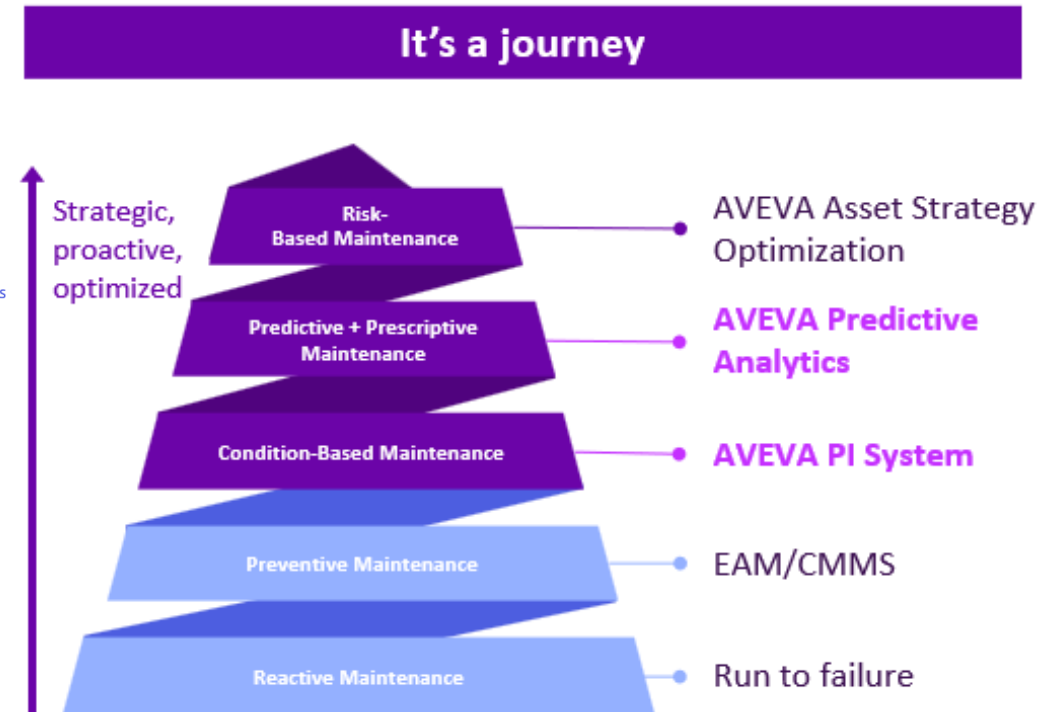
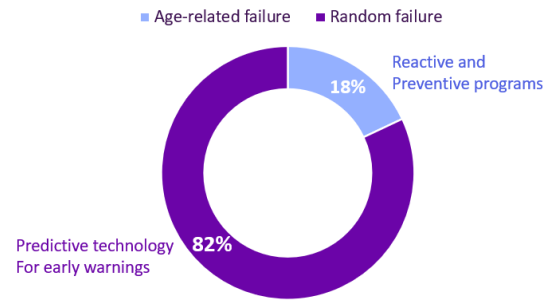
- predictive monitoring of industrial equipment assets
- Compressors, Pumps, Gearbox's, Motors, Turbines, Generators, etc.

Improve asset reliability and performance

- optimize maintenance planning
- reduce maintenance costs
- reduce energy consumption and lost power

Prevent equipment & process failures

- early warning detection and diagnosis of equipment problems
- detection of industrial process issues





Available today

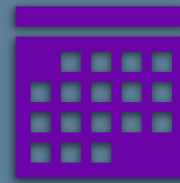
# AVEVA™ Predictive Asset Optimization

Customer challenge: Determining the best action when an anomaly is detected



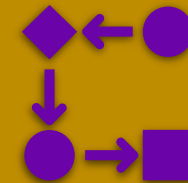
## Stop and fix it now?

- Fix immediately to eliminate risk of failure
- Return to standard operations quicker



## Wait until planned shutdown?

- Risk of equipment failure during operations
- If no failure, then less cost



## Can I operate differently?

- A change in configuration could reduce the risk of failure while extending the life of the equipment at risk



# Integrated AI

Predictive + Prescriptive + Prognostic

✓ **Historical**

**What Happened**

*Historical Domain*

✓ **Real-Time**

**What's Happening**

*Real-Time Domain*

**+ Predictive**

**What If**

*Machine Learning Domain*

**+ Prescriptive**

**What to do**

*Maintenance Action Domain*

**+ Prognostics**

**How bad will it get**

*Artificial Intelligence Domain*



# Industrial AI Assistant on CONNECT

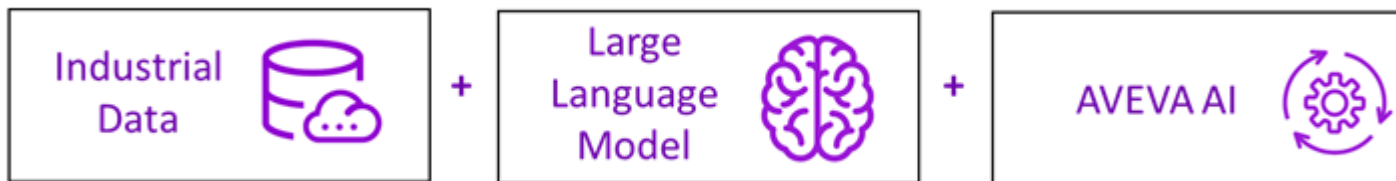
...partnered with  Microsoft | AVEVA AI infused | Patent-pending

## Knowledge-Linking

- AI-driven data inferencing
- Automatic relationships across structured and unstructured data
- No data hierarchy or model needed
- Fast on-boarding

## Objective-Driven

- Ask complicated questions (“why is my compressor operating worse now than it did last week?”)
- Breaks down the question into sub-queries behind the scenes, using focused guardrails
- Consolidates the response back to the user
- Transparent & traceable through Citations

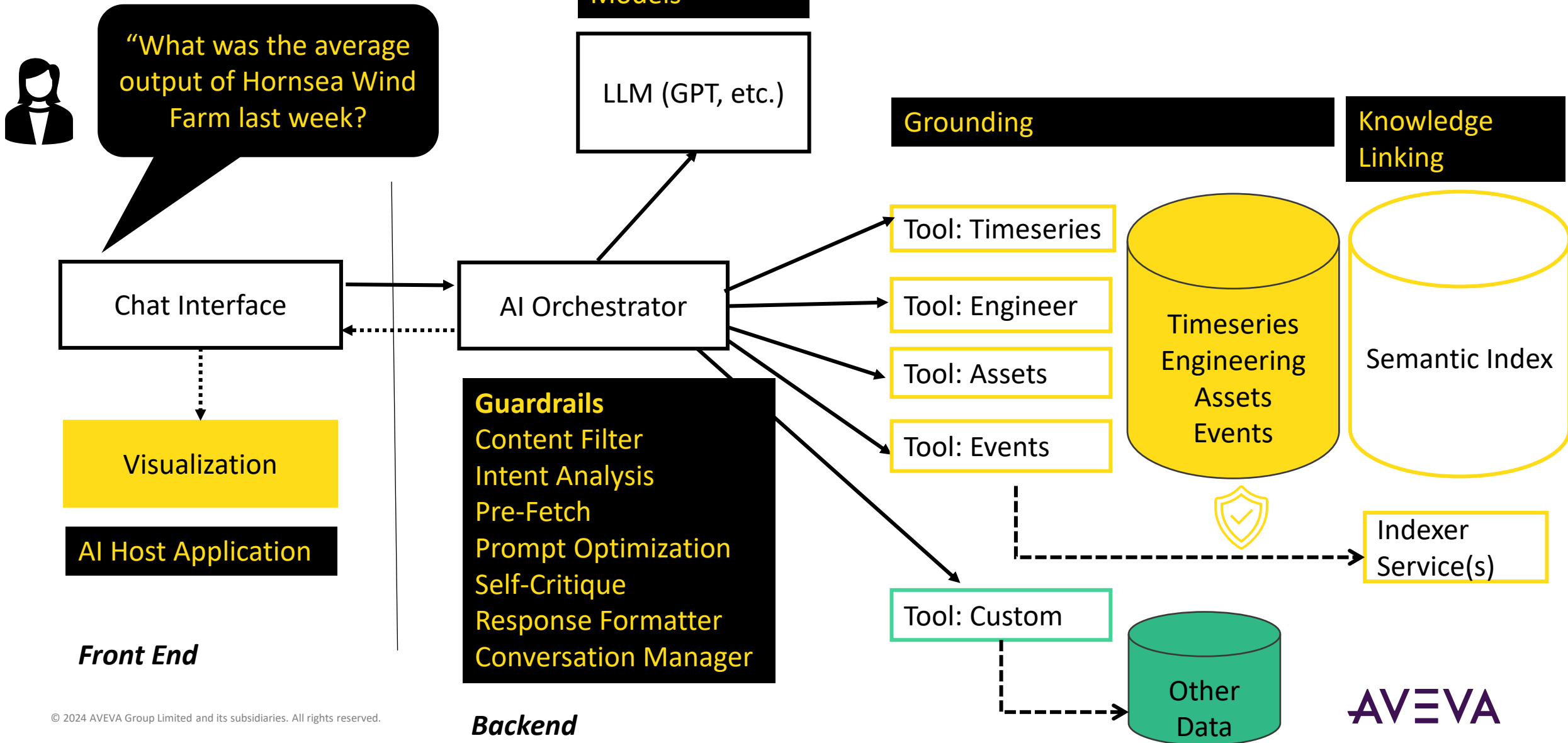


The screenshot shows a chat window titled "Industrial AI Assistant (Preview)". The chat history includes:

- Assistant (12:59:03 pm):** Hi David Smith. How can I help you?
- David Smith (1:01:20 pm):** I received some alerts for a pump called J-9002A - can you tell me what the problem is?
- Assistant (1:01:35 pm):** The pump [J-9002A](#) has had a total of 28 events recently. Out of these, 12 events were due to high vibration, causing the pump to stop for a total duration of 2 hours. The remaining 16 events were normal, with the pump running for a total duration of 2 hours and 40 minutes. The high vibration could be the problem that triggered the alerts. It is recommended to check the pump for any mechanical issues that might be causing the high vibration.

Below the assistant's response is a button labeled "Show Event Details". At the bottom of the chat window, there is a text input field with the placeholder "Enter your message..." and a blue send button. Above the input field, the text "Asset Utilization" is visible.

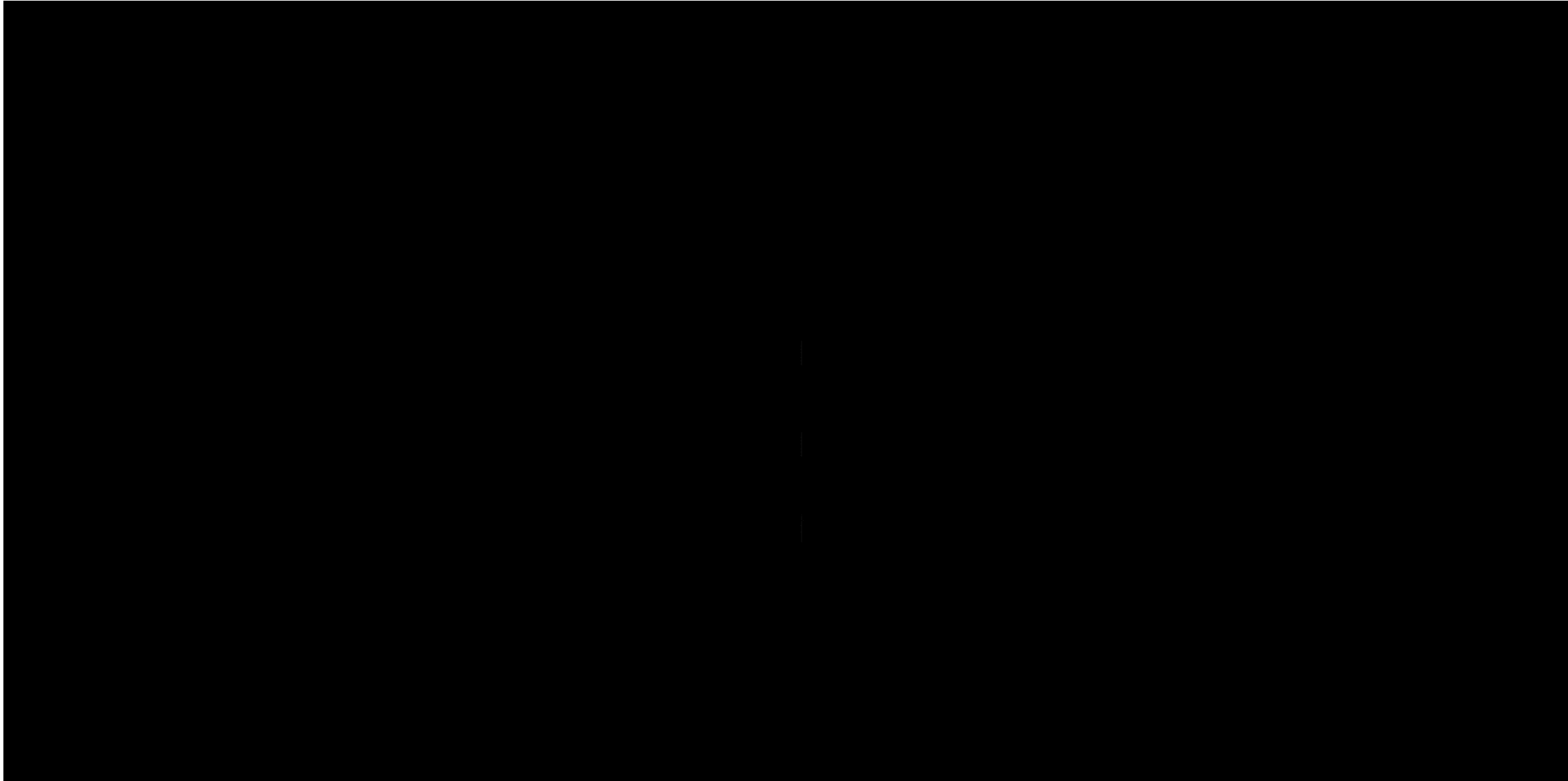
# Architecture





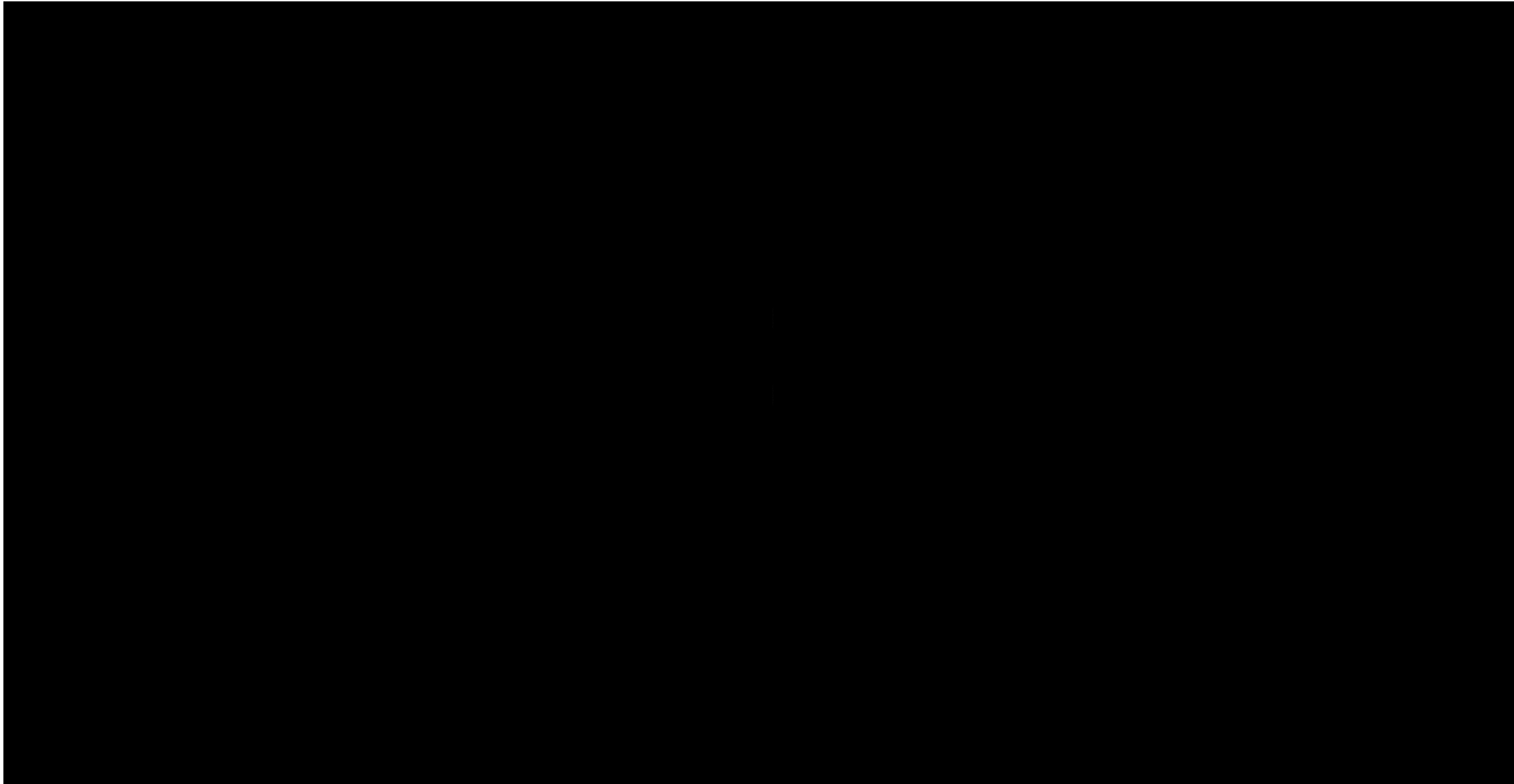


# Industrial AI Assistant





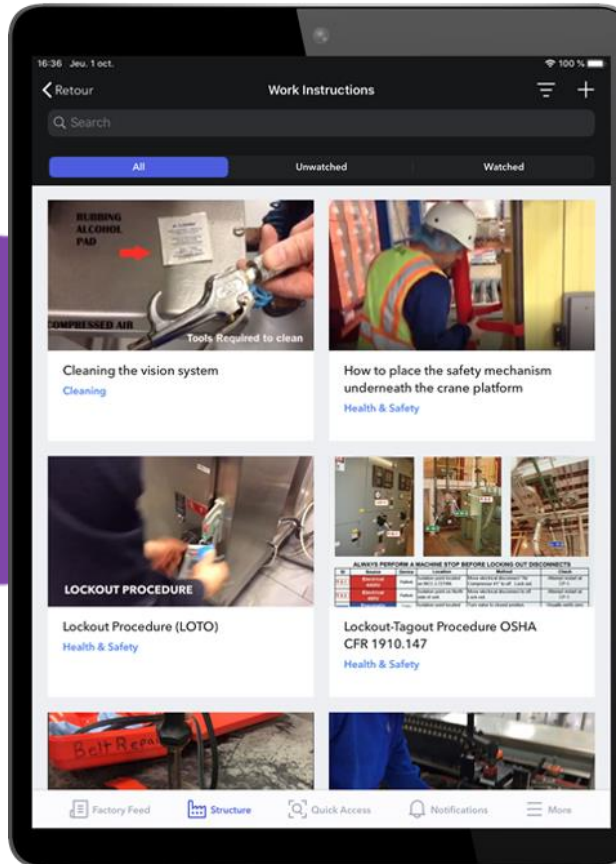
# Sneak Peek – Generating Dashboards using AI



# Bringing Knowledge & Digital Entities Together



Experienced  
Best Practices  
Tribal Knowledge



Tech Savvy  
Collaborative  
Untapped Potential



# Continuous Improvement of Skills Knowledge



- Home
- Assets
- Inference
- Applications
- Entitlements
- Publish
- Internal

### Inference: DesalPlantDemo

Tags processed for Source DesalPlantDemo **XX%** (xxxxx of xxxxx)

Next: Configure naming standards

- 1 Review tag naming formats
- 2 Configure naming standards

Next

#### Major tag formats

Select to view

- Format 1 (52%) 480 of 923
- Format 2 (38%) 348 of 923
- Format 3 (3%) 25 of 923
- Format 4 (3%) 24 of 923
- Format 5 (2%) 23 of 923
- Format 6 (2%) 17 of 923
- Format 7 (1%) 6 of 923

1. Click on each Format 1 and confirm its meaning. [View tags for this format](#) [Ignore this format](#)  
You may also use the buttons to split or merge parts to create more or less meaning.

You must have no duplicates for the format below to continue to the next format

Cluster 1 . A I T 7121312 \_ aCOMMS

Attribute ? Separator Asset Type ? Separator Attribute

[-] [+]

Definition for selected part (type or select) View values found for this part

Attribute x ▾

2. Review minor tag formats similar to Format 1  
These representative tags have similar formats and will share the definitions set above. Hover and click the arrow if a format needs to be defined separately.

Count (click to view)	Tag Name	Comment	Define separately	Ignore
XX% (128)	Cluster1.AIT7121312_aM1		<input type="checkbox"/>	<input type="checkbox"/>

3. Save and view new format

Confirm

Questions?

This presentation may include predictions, estimates, intentions, beliefs and other statements that are or may be construed as being forward-looking. While these forward-looking statements represent our current judgment on what the future holds, they are subject to risks and uncertainties that could result in actual outcomes differing materially from those projected in these statements. No statement contained herein constitutes a commitment by AVEVA to perform any particular action or to deliver any particular product or product features. Readers are cautioned not to place undue reliance on these forward-looking statements, which reflect our opinions only as of the date of this presentation.

The Company shall not be obliged to disclose any revision to these forward-looking statements to reflect events or circumstances occurring after the date on which they are made or to reflect the occurrence of future events.

 [linkedin.com/company/aveva](https://www.linkedin.com/company/aveva)

 [@avevagroup](https://twitter.com/avevagroup)

#### ABOUT AVEVA

AVEVA is a world leader in industrial software, providing engineering and operational solutions across multiple industries, including oil and gas, chemical, pharmaceutical, power and utilities, marine, renewables, and food and beverage. Our agnostic and open architecture helps organizations design, build, operate, maintain and optimize the complete lifecycle of complex industrial assets, from production plants and offshore platforms to manufactured consumer goods.

Over 20,000 enterprises in over 100 countries rely on AVEVA to help them deliver life's essentials: safe and reliable energy, food, medicines, infrastructure and more. By connecting people with trusted information and AI-enriched insights, AVEVA enables teams to engineer efficiently and optimize operations, driving growth and sustainability.

Named as one of the world's most innovative companies, AVEVA supports customers with open solutions and the expertise of more than 6,400 employees, 5,000 partners and 5,700 certified developers. The company is headquartered in Cambridge, UK.

Learn more at [www.aveva.com](https://www.aveva.com)