

AVEVAWORLD
PARIS

Sustainability Impact Award 2024 Presentation

AVEVA WORLD

PARIS

Day 3: Keynote Speakers

AVEVA Sustainable
Impact Award 2024

R&D Showcase: What Happens After Next

Sponsored by



Lisa Wee

AVEVA
Chief Sustainability
Officer



Iju Vijaya Raj

AVEVA
Executive Vice President
R&D



Simon Bennett

AVEVA
R&D Director, Research
and Innovation



Sonia Ferreira

AVEVA
Principal Architect &
Lead Technology
Evangelist in Visualization



Clemens Schönlein

AVEVA
Lead Technology
Evangelist AI & Analytics



AVEVA
**Sustainable
Impact Award**
2024

Introducing our finalists



**Calibr8 /
ABS - CBN**



CSL



Henkel



Protium

Congratulations
to our winner

**Calibr8 /
ABS – CBN**



AVEVA
**Sustainable
Impact Award**
2024

Thank you for voting

We will make a donation
to plant 10,000 trees
in France.


They will sequester
500,000 kgCO₂e
over their lifetime!



tree-nation

AVEVAWORLD
PARIS

R&D Showcase: What Happens After Next



**Why is your
technology outlook the
key to the future of
your work?**

Some technologies change society forever

Some technologies change society forever

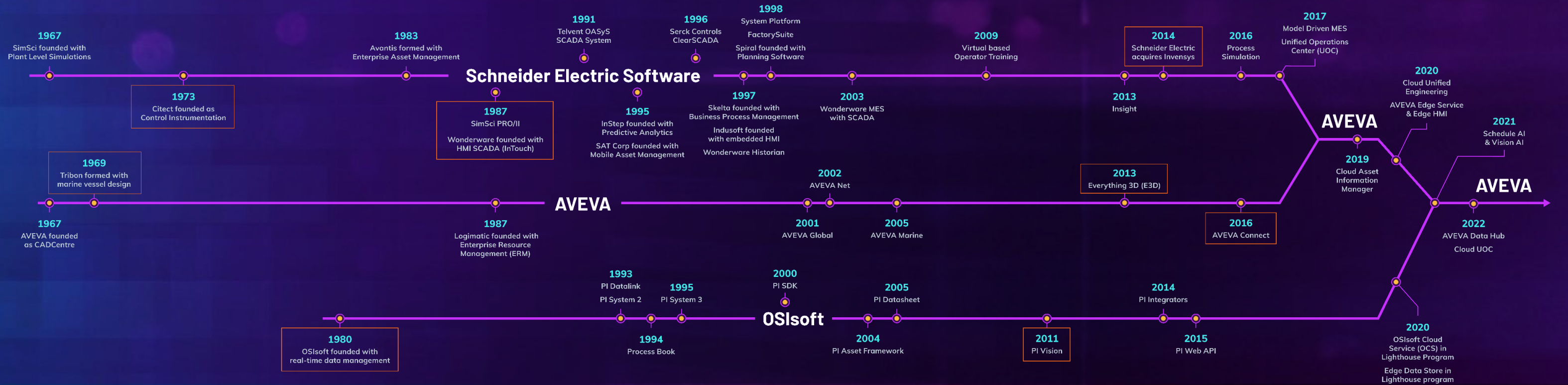
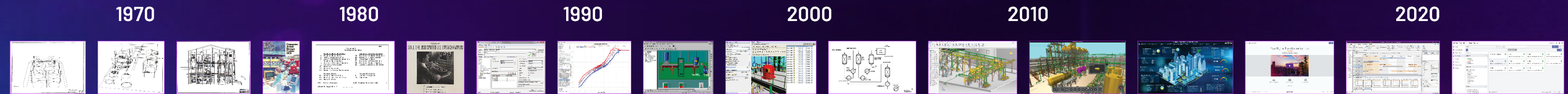


**Computers in our
homes and workplaces**



**Globally connected
people, information and
organizations**

Moments of AVEVA innovation



Harnessing the technologies of tomorrow



Human &
Artificial Intelligence

Harnessing the technologies of tomorrow



Human &
Artificial Intelligence

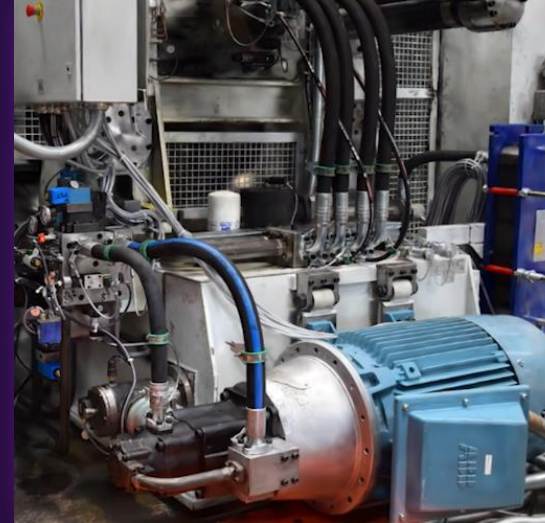


Visualization

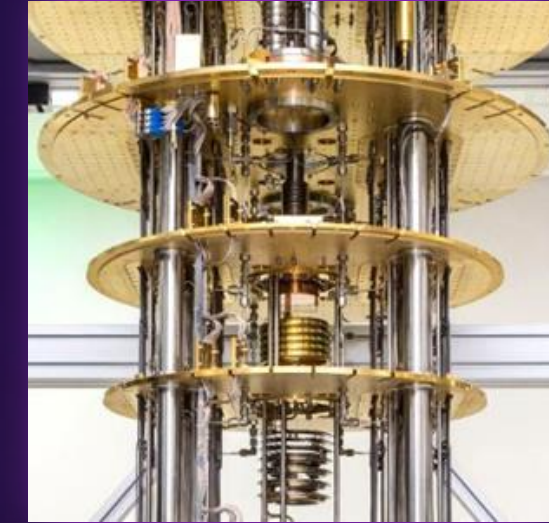
Harnessing the technologies of tomorrow



**Human &
Artificial Intelligence**



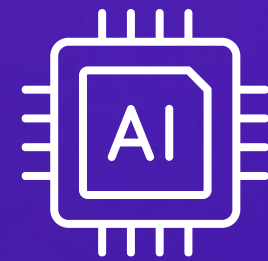
Visualization



**Compute
of the future**

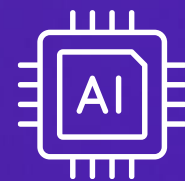


+

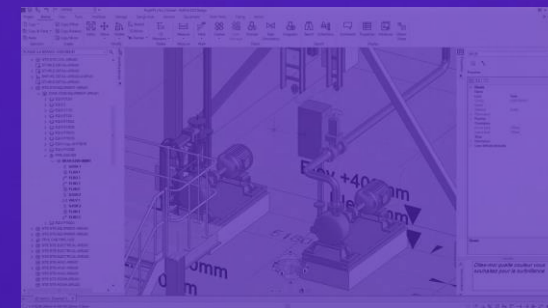
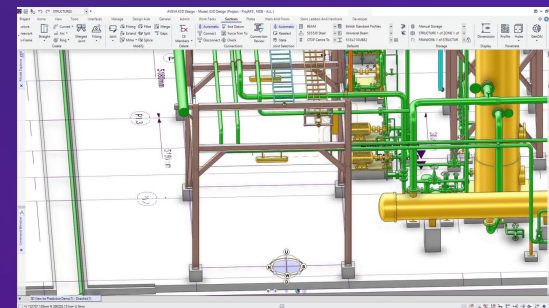




+



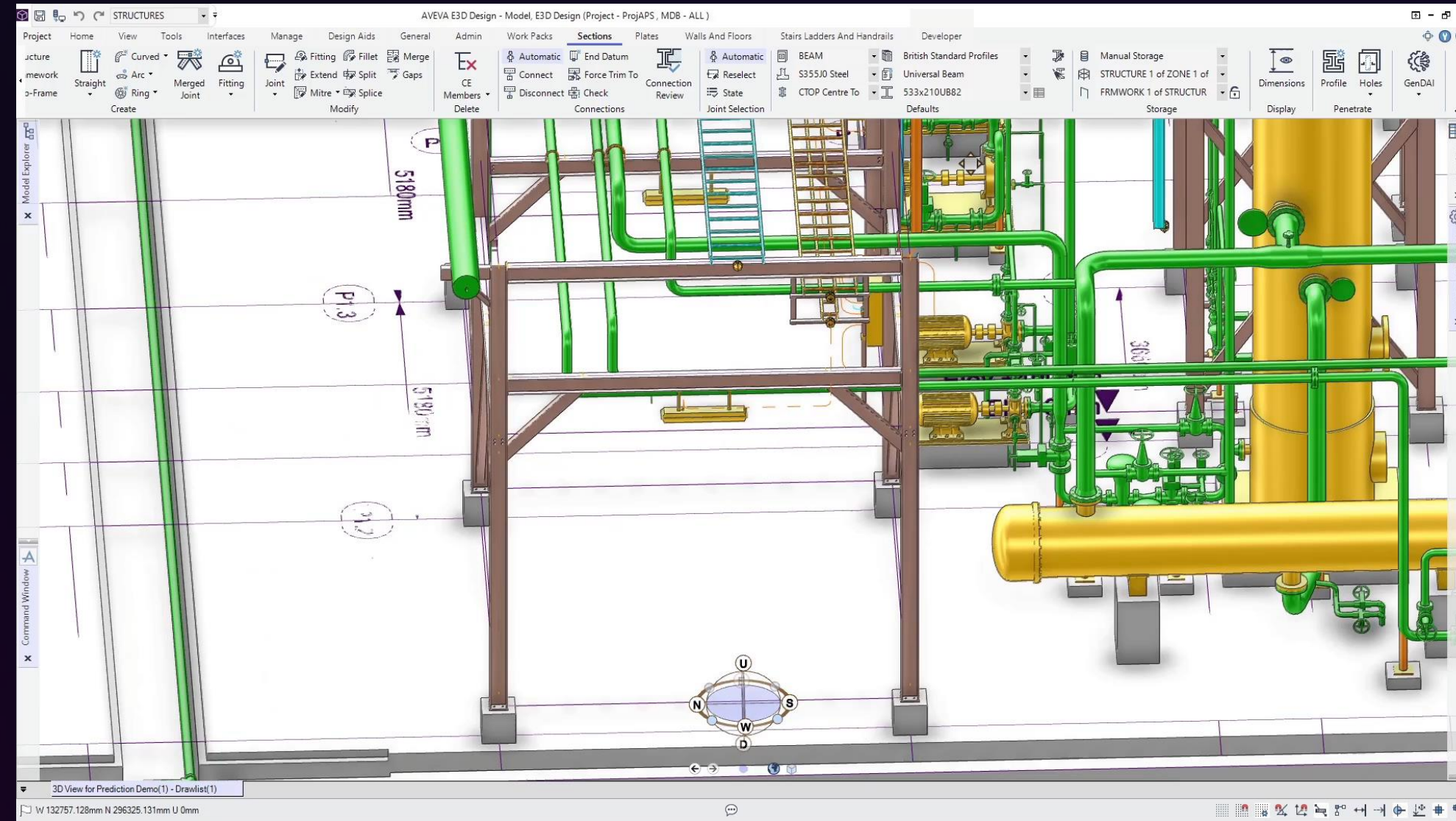
Co-Create



Predictive design

Accelerate design using historical project data to anticipate requirements.

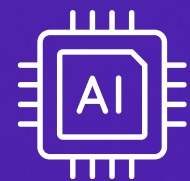
Predictive
design



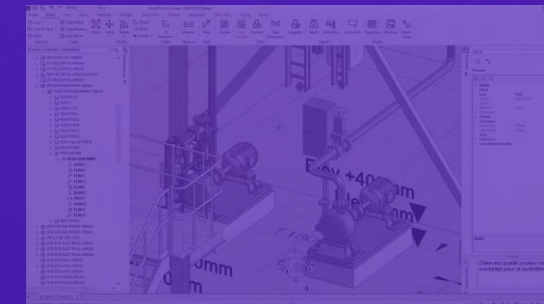
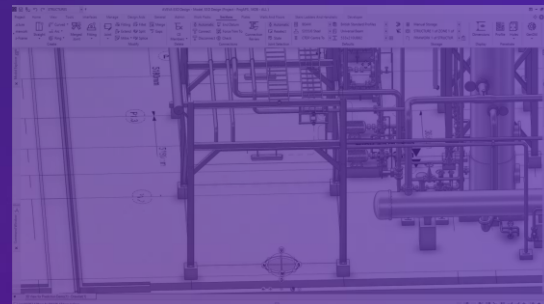
Predictive
design



+



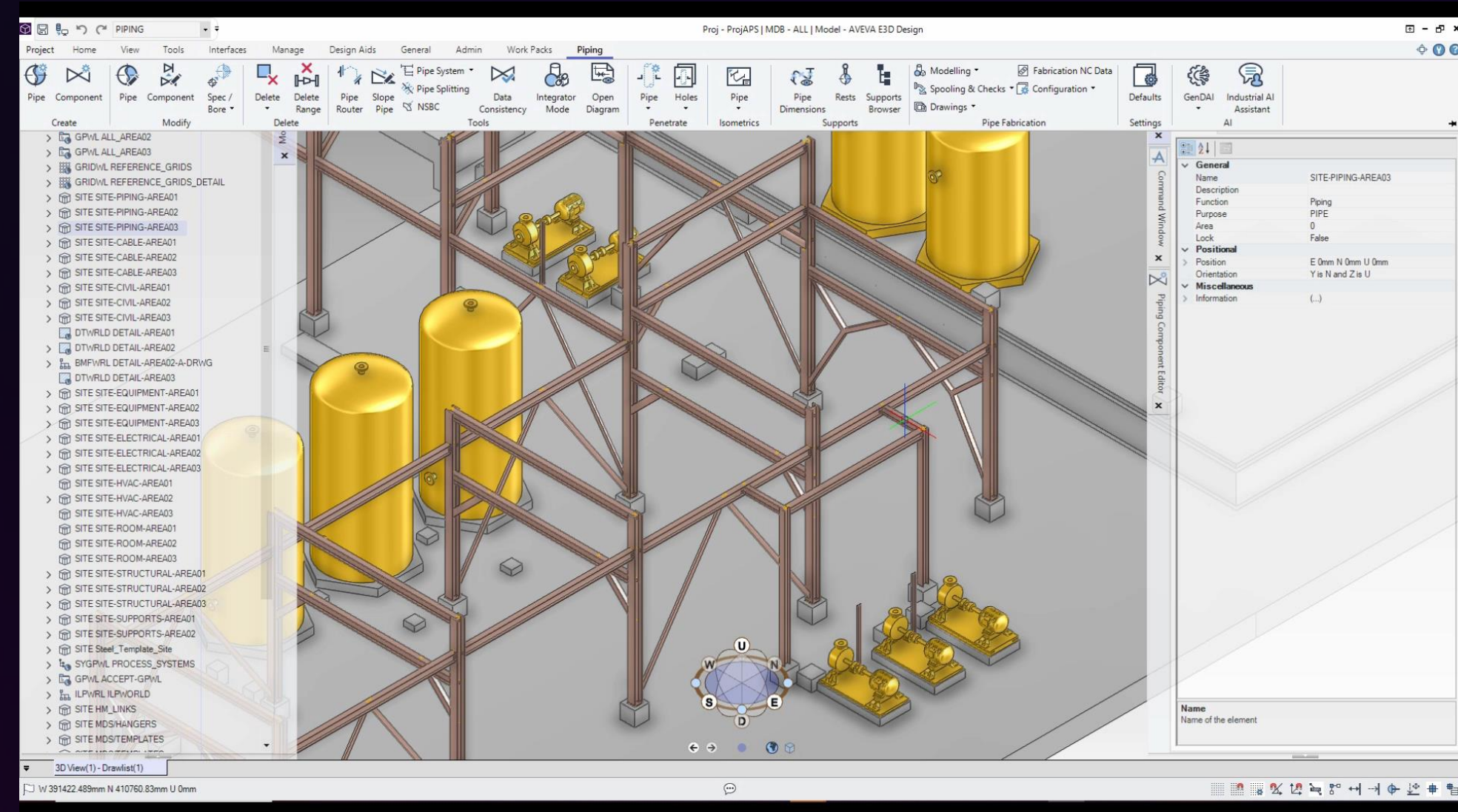
Co-Create



Chat-driven design

Use Industrial AI Assistant to supplement time-intensive design activities.

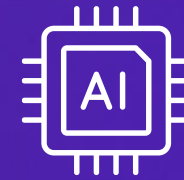
Chat-driven
design



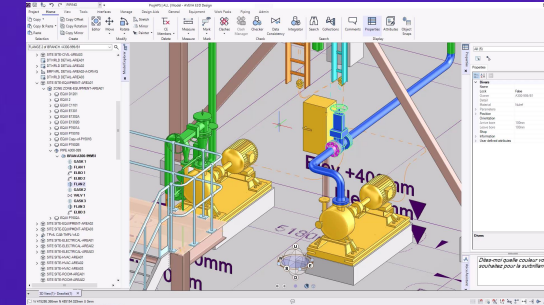
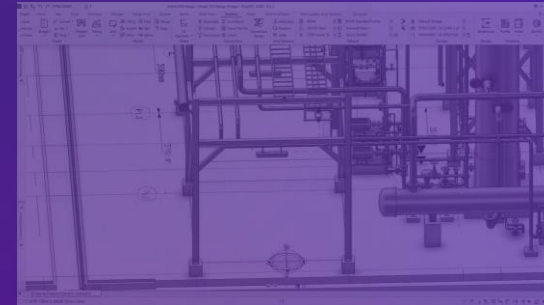
Chat-driven
design



+



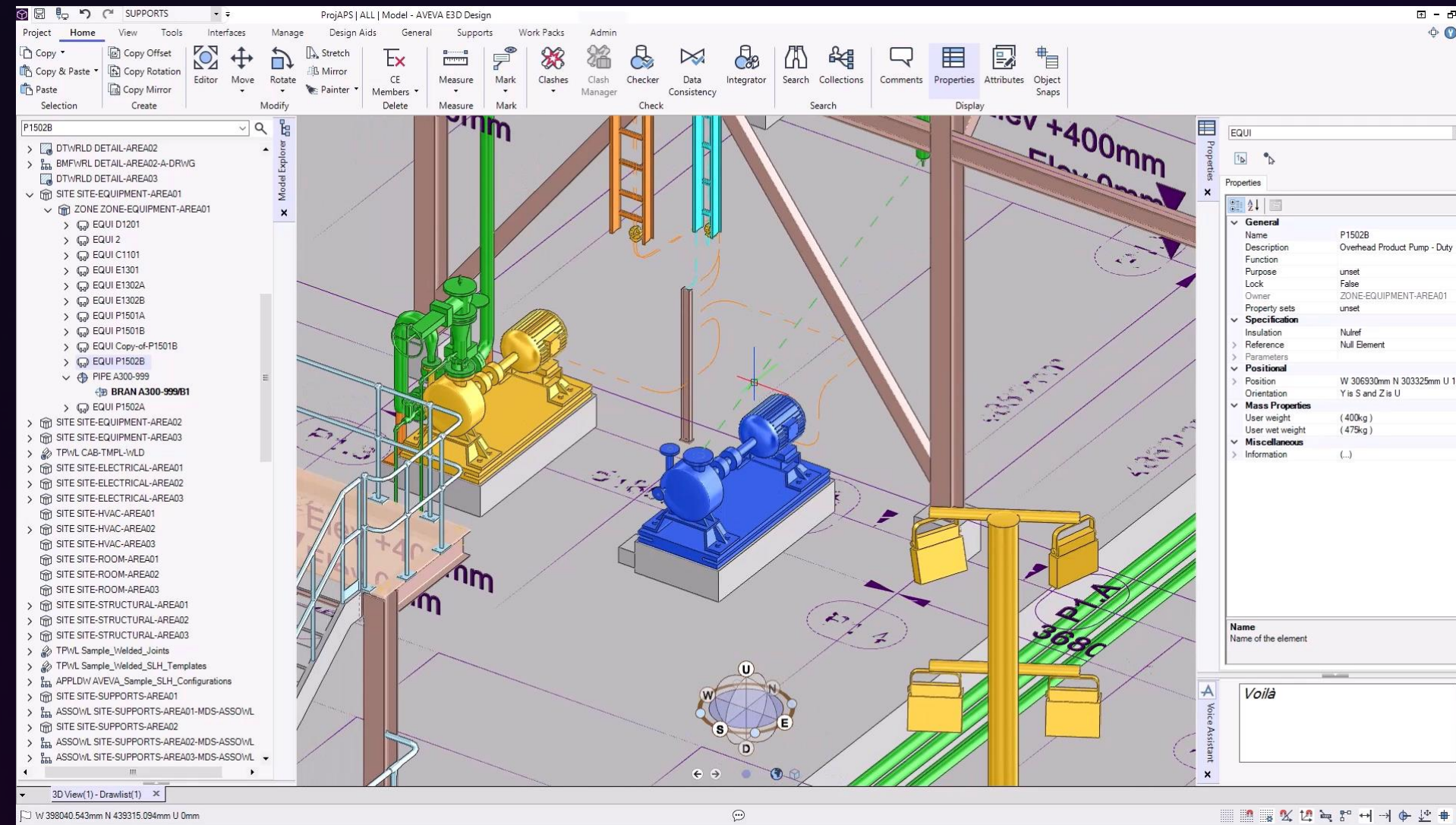
Co-Create



Voice-driven design

Integrate voice instructions to initiate changes to designs.

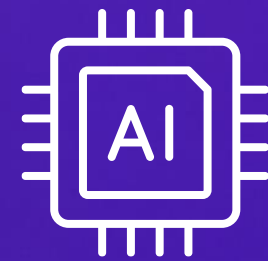
Voice-driven
design



Voice-driven
design

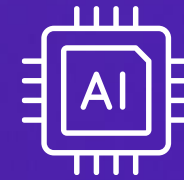


+





+

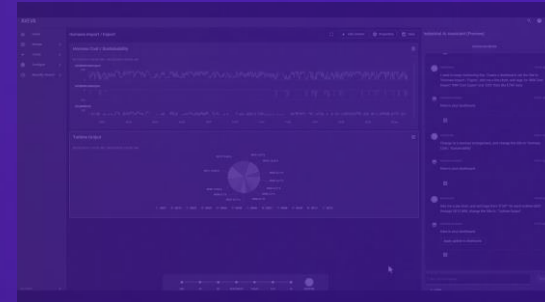


Collaborate



Generative models

Extrapolate 3D visual models from existing point cloud data.



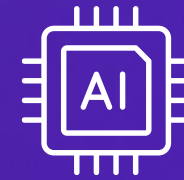
**Generative
models**



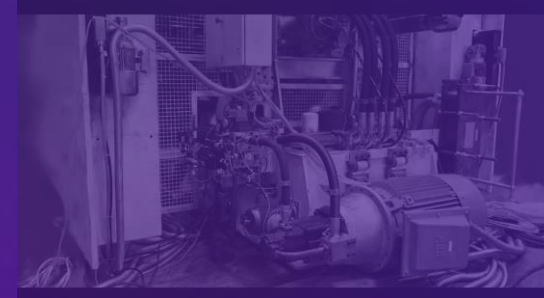
**Generative
models**



+





Collaborate



Generative dashboards

Automate creation of 2D dashboards
using Industrial AI Assistant.

Generative dashboards

212 views Modified: 9/10/2024 1:38 PM lori.warda@aveva.com	147 views Modified: 5/8/2024 7:49 AM jackie.jiang@aveva.com
 GE07 - Turbine Details 67 views Modified: 9/10/2024 1:40 PM lori.warda@aveva.com	 G01 Turbine Current Mec... 51 views Modified: 9/18/2024 7:34 AM david.a.smith@aveva.com

Show Event Details

Extreme Weather Conditions: High winds, ice, or other severe weather conditions can lead to operational anomalies and protective tripping.

6. Control System Malfunctions:

- **Sensor Failures:** Faulty sensors can provide incorrect data, leading to unnecessary tripping.
- **Control System Errors:** Software or hardware malfunctions in the control system can cause erroneous tripping signals.

7. Grid Disturbances:

- **Frequency Fluctuations:** Significant deviations in grid frequency can cause protective tripping.
- **Grid Faults:** Issues in the wider electrical grid, such as faults or instability, can lead to turbine tripping.

Runtime: 63.34%

To accurately diagnose the specific cause, a detailed analysis of the fault logs, sensor data, and environmental conditions at the time of the tripping event is necessary. If you have access to more detailed event logs or diagnostic reports, they can provide further insights into the exact nature of the faults.

Create Dashboard

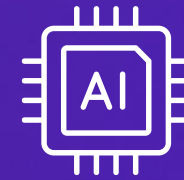
What type of fault could cause this tripping with open breakers?

99 / 500

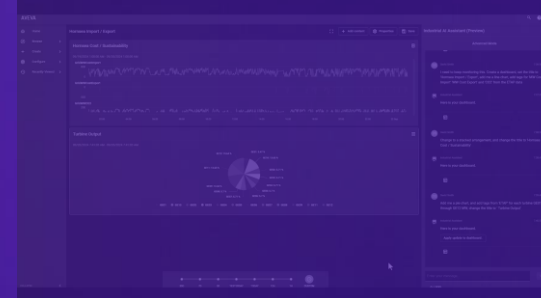
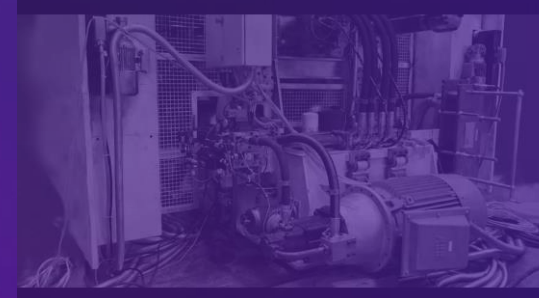
Generative dashboards



+



Collaborate



Guided decisions

Generate optimized production and maintenance schedules with Industrial AI Assistant.

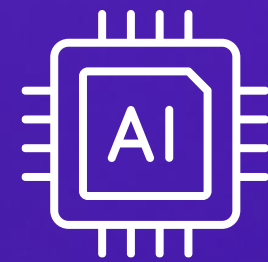
Guided decisions



Guided decisions



+



Quantum computing is on an accelerating arc in science

€1Bn

EU's Quantum Program

\$3.4Bn

US National Quantum Initiative

\$2Bn

Private sector Investment

250 global startups

Very significant differences in energy consumption



97MWh

45 US houses for a year



0.00042MWh

7 boiled kettles

Industries already researching potential quantum advantage

Pharmaceutical
New drug development

Manufacturing
New material science

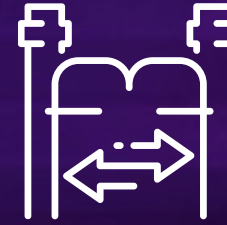
Cybersecurity
Protecting encryptions

Financial sector
Fraud detection, portfolio optimization

Target use cases for industry



Optimization



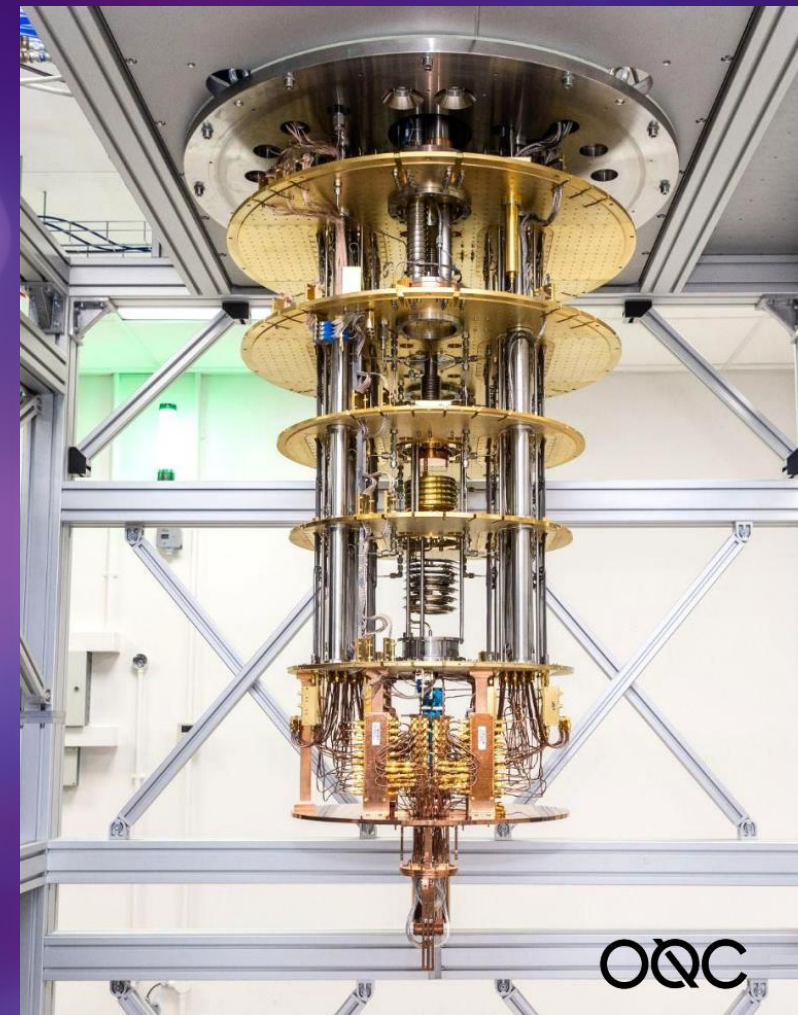
Simulation



AI Training



Radical collaboration with
Oxford Quantum Circuits



CONNECT

Shaping the industries of the future



**Build your
innovation
ecosystem**

AVEVAWORLD
PARIS

R&D Showcase: What Happens After Next

AVEVA WORLD

PARIS

Congratulations to our winners!

Take your marked PI Geek to the registration desk to collect your prize





**Congratulations
to our WINNER!**

Roy Kristensen

A wide-angle photograph of the Golden Gate Bridge in San Francisco at dusk. The bridge's towers and suspension cables are illuminated with a warm, golden light. The sky is a mix of soft pinks, purples, and blues. In the background, the city lights of San Francisco are visible, and the water of the bay reflects the bridge's lights.

AVEVAWORLD

SAN FRANCISCO 2025

April 7-10, 2025