

AVEVAWORLD

OCTOBER 2024

---

# AVEVA™ InTouch HMI: Latest Enhancements

InTouch 2023 R2

Scott A. Kortier – AVEVA Operations Control – Edge, Technical Product Manager

AVEVA

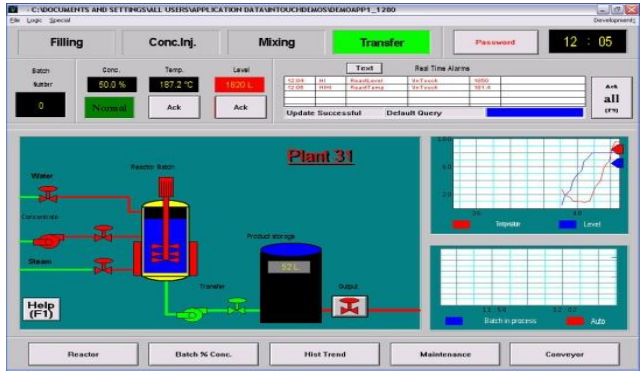
---

# InTouch & InTouch Web



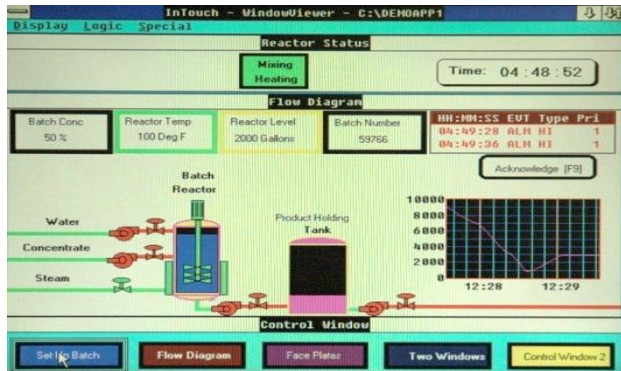
# An unprecedented journey

1990



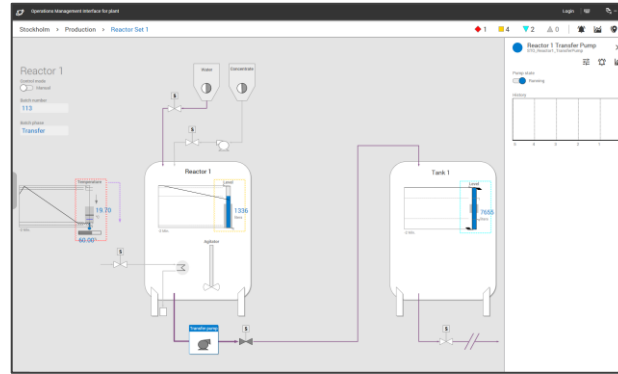
2010

2000



# An unprecedented journey

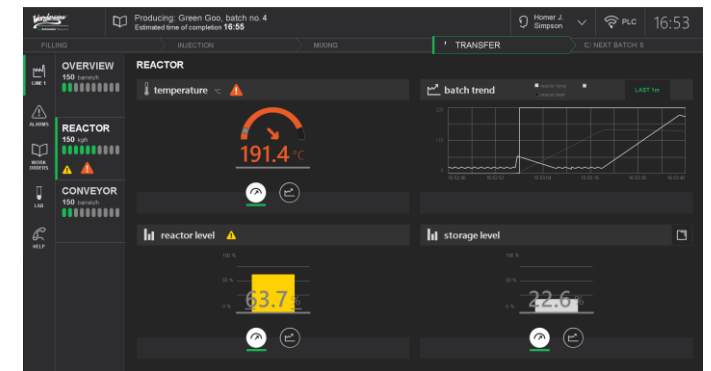
2010



2024

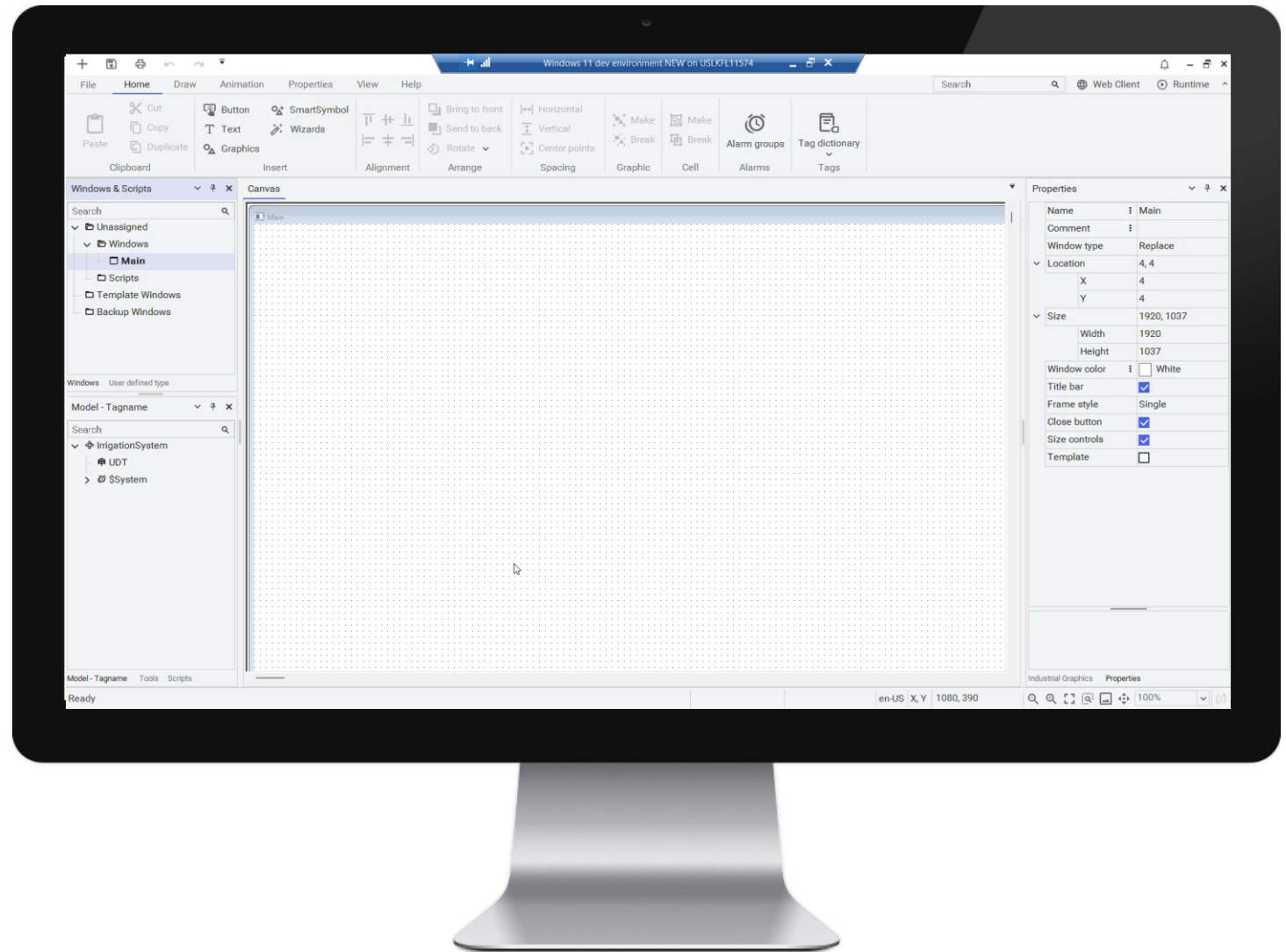


2020

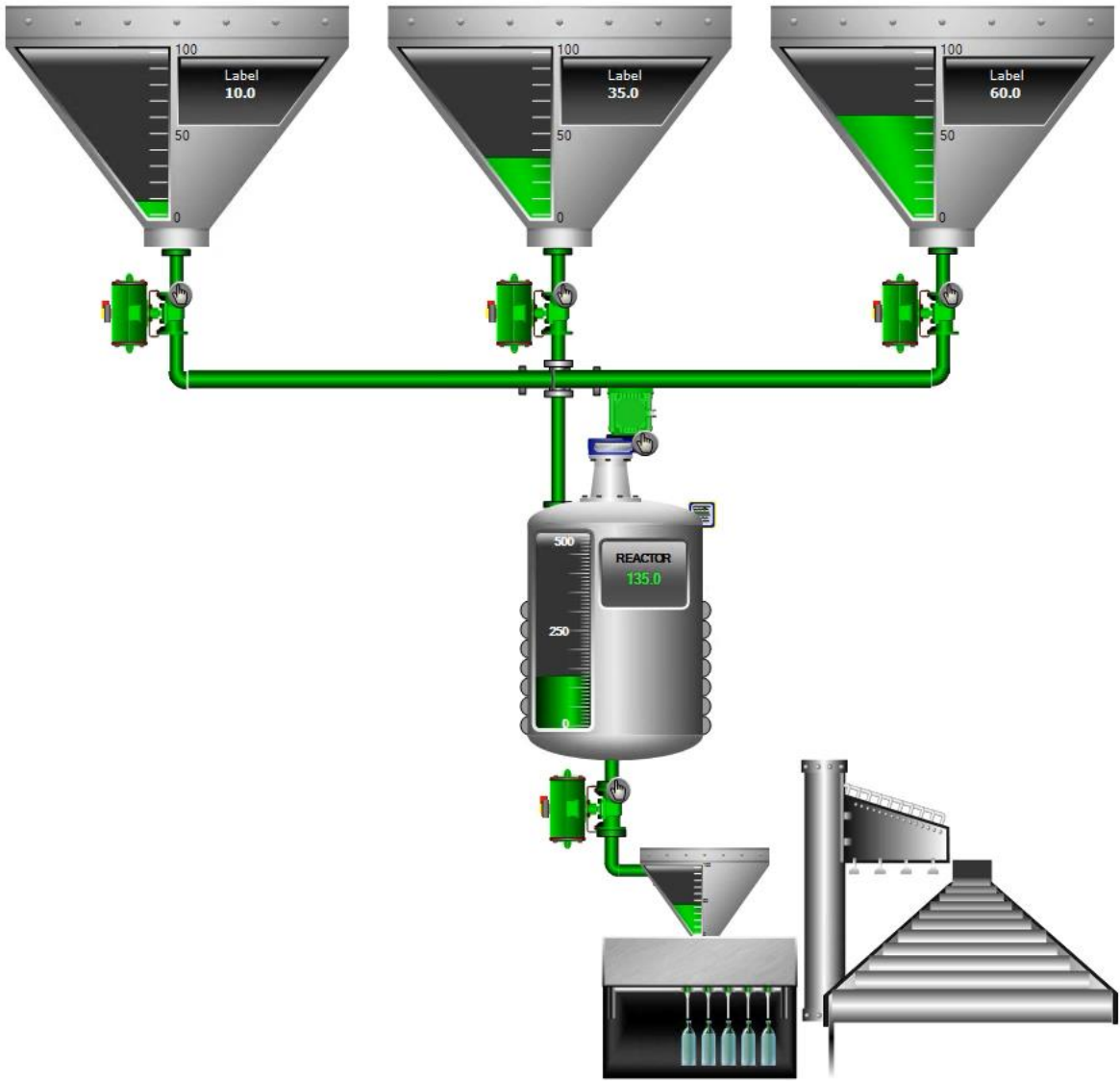


# User-Defined Types

- Model reusable templates for structured data types such as equipment and sensors
- Rapidly create structured instances from templates and apply instance-specific settings
- Link to graphics and easily switch between instances with OwningObject property



Owning Object InTouch:BatchPlant  
InTouch:BatchPlant



Time /	State	Class	Type	Priority	Name	Group	Provider	Value
05/09/2011 02:29:34 PM	UNACK_RTIN	VALUE	Hi	250	StorageTank_00...	Demo_Area	Galaxy	7975.0
05/09/2011 02:30:11 PM	UNACK_RTIN	VALUE	LoLo	700	Reactor_001.Ra...	Demo_Area	Galaxy	200.0
05/09/2011 02:30:15 PM	UNACK_RTIN	VALUE	Lo	400	Reactor_001.Ra...	Demo_Area	Galaxy	500.0
05/09/2011 02:30:31 PM	UNACK	VALUE	Hi	400	Reactor 001.Ra...	Demo Area	Galaxy	1550.0

23 105

Logged on Operator  
None

Security

CONCENTRATE (%) 50 BATCH NUMBER 73 REACTOR LEVEL (L) 1955 REACTOR TEMP (°C) 194

TRANSFER

Water Concentrate

V101 Reactor M101

V103

V104

Storage M202

V102

V103

V201

V202

2500  
200  
200000

Severity	State	Node	Tagname	Description	Type	Time	Limit	CV	AlarmDuration	Operator
900	UNACK	portfestsrv	StorageTank_001.ProdLevel.Hi		Hi	4/18/2013 16:29:55	5000.0	8918		
100	UNACK	portfestsrv	StorageTank_001.ProdLevel.HiHi		HiHi	4/18/2013 16:31:43	8000.0	8918		

V-101

V-102

Vessel\_101

Mixer\_V101

Lvl\_101

1850.00  
Liters

LVL-101  
1850  
CM

21  
TI\_101

Storage\_101

Lvl\_102

8918.00  
Liters

Same application – different UX design philosophies  
This is the flexibility of AVEVA Industrial Graphics

Operations Management Interface for plant

Stockholm > Production > Reactor Set 1

Reactor 1

Control mode  
Manual

Batch number  
113

Batch phase  
Transfer

Reactor 1

Level  
1336  
liters

Temperature  
19.70  
°C

60.00  
°C

Agitator

Transfer pump

Tank 1

Level  
7655  
liters

Estimated time of completion 16:55

MIXING

TRANSFER

NEXT BATCH: 5

Homer J. Simpson

PLC

16:53

OVERVIEW REACTOR

150 barrels/h

temperature °C

191.4 °C

REACTOR 150 kg/h

CONVEYOR 150 barrels/h

reactor level

63.7 %

storage level

22.6 %

batch trend

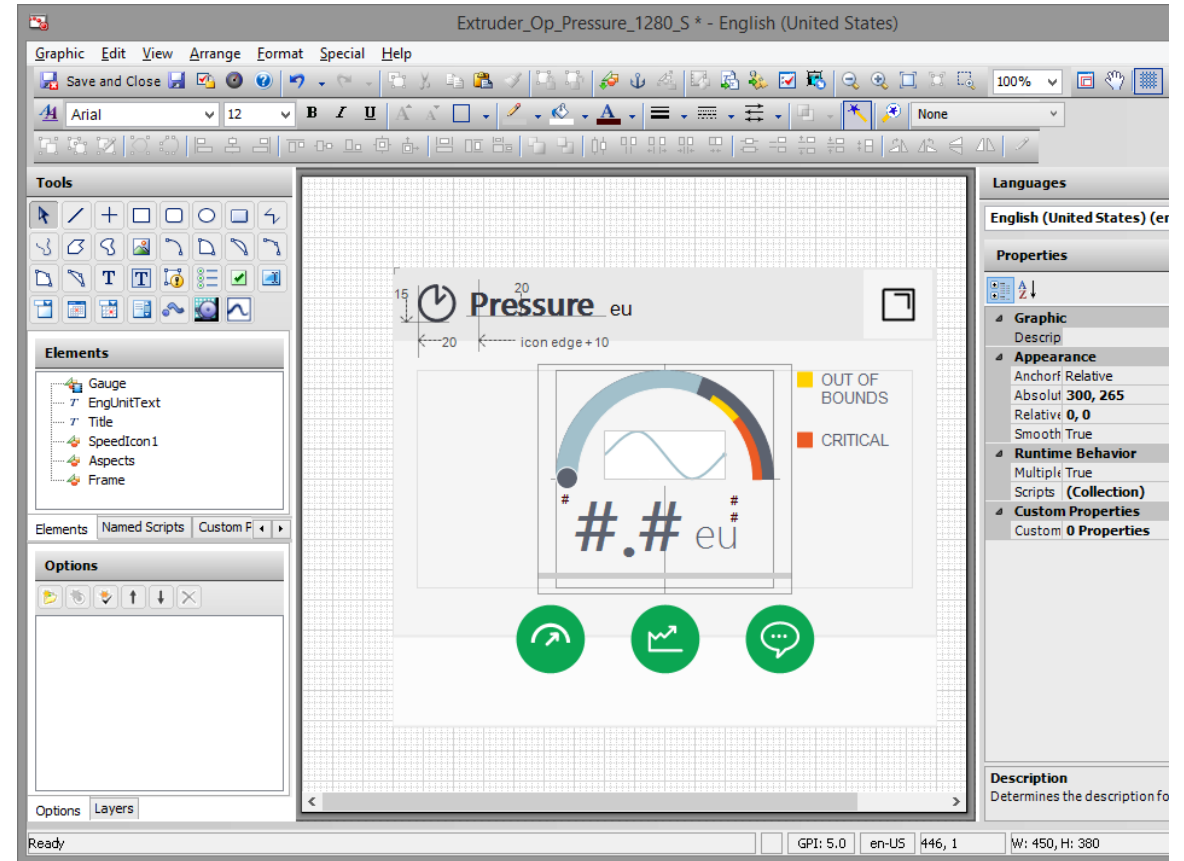
reactor temp

reactor level

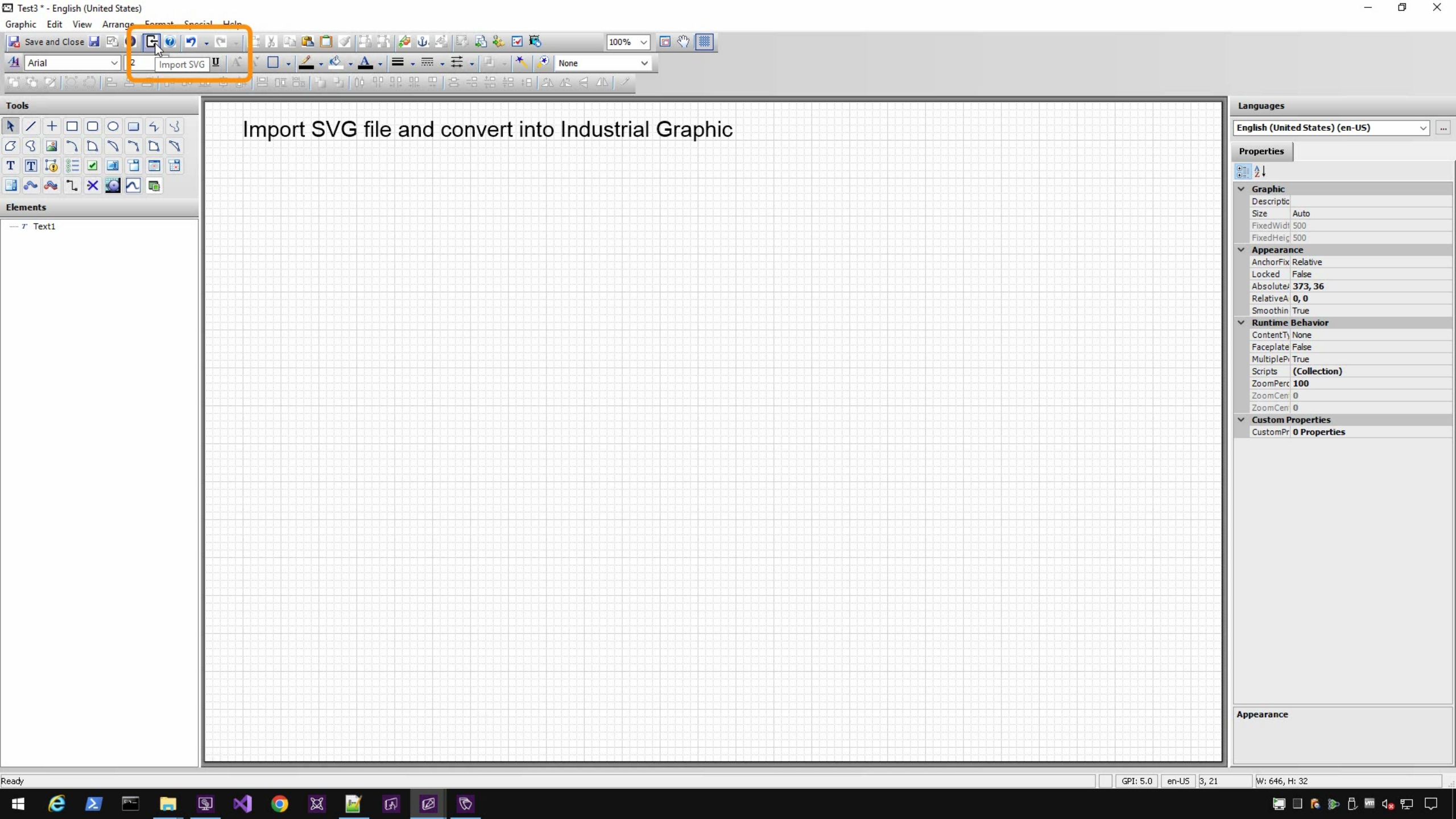
LAST 1m

# Designer & developer collaboration

## SVG import







Save and Close Import SVG 100% None

Tools

- Selection tools: arrow, lasso, pan
- Creation tools: rectangle, circle, ellipse, line, curve
- Editing tools: delete, undo, redo, copy, paste, zoom
- Text tool: T
- Other tools: eraser, fill, stroke, gradient

Elements

- 7 Text1

# Import SVG file and convert into Industrial Graphic

Languages

English (United States) (en-US)

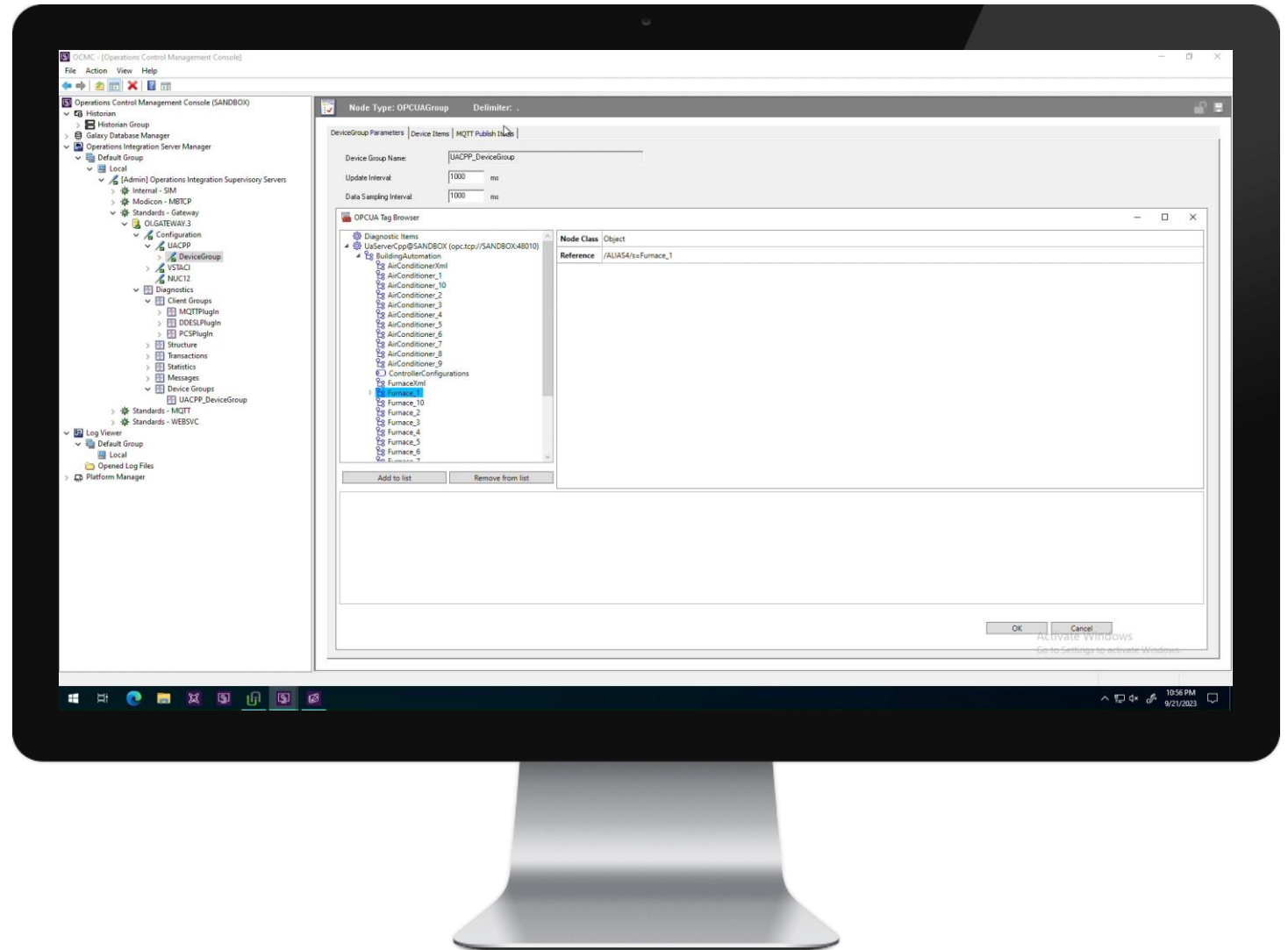
Properties

- Graphic
  - Size: Auto
  - FixedWidth: 500
  - FixedHeight: 500
- Appearance
  - AnchorFix: Relative
  - Locked: False
  - Absolute: 373, 36
  - RelativeA: 0, 0
  - Smoothin: True
- Runtime Behavior
  - ContentTy: None
  - Faceplate: False
  - MultiplePi: True
  - Scripts: (Collection)
  - ZoomPerc: 100
  - ZoomCen: 0
  - ZoomCen: 0
- Custom Properties
  - CustomPr: 0 Properties

Appearance

# OPC UA tag creation

- Browse connected OPC UA servers
- Select attributes and drag-n-drop into InTouch Model
- Automatic creation of tag, with IO binding and alarm group



# New alarm state LATCHED

- New optional alarm state LATCHED
- When enabled, alarms will remain visible in the alarm client until Dismissed by a user, even if the alarm is Acknowledged and Returned

User	Priority	State	Node	Group	Name	AlarmComment	Type	TimeLCT	Limit	Current	AlarmDuration	Operator	UnAckDuration
0	500	UNACK	LorenQA1	Tank1	Tag1		LO	11/8/2022 1:02:12 PM	35	25	000 00:00:00.000	None	000 00:00:00.000
0	1	UNACK	LorenQA1	Tank1	Tag2		LO	11/8/2022 1:02:12 PM	35	25	000 00:00:00.000	None	000 00:00:00.000
0	500	UNACK	LorenQA1	Tank1	Tag3		LO	11/8/2022 1:02:12 PM	35	25	000 00:00:00.000	None	000 00:00:00.000
0	299	UNACK	LorenQA1	Tank1	Tag4		LO	11/8/2022 1:02:12 PM	35	25	000 00:00:00.000	None	000 00:00:00.000
0	1	UNACK	LorenQA1	Tank2	Tag5		LO	11/8/2022 1:02:12 PM	35	25	000 00:00:00.000	None	000 00:00:00.000
0	1	UNACK	LorenQA1	Tank2	Tag6		LO	11/8/2022 1:02:12 PM	35	25	000 00:00:00.000	None	000 00:00:00.000
0	1	UNACK	LorenQA1	Tank1	Tag7		LO	11/8/2022 1:02:12 PM	35	25	000 00:00:00.000	None	000 00:00:00.000
0	1	UNACK	LorenQA2-10.78.46.78	Tank1	Tag8		LO	11/8/2022 1:02:12 PM	35	25	000 00:00:00.000	None	000 00:00:00.000
0	1	UNACK	LorenQA1	Tank1	Tag9		LO	11/8/2022 1:02:12 PM	35	25	000 00:00:00.000	None	000 00:00:00.000

Displaying 1 to 9 of 9 alarms | Query: Default | Filter: 100% Complete | Pacific Time (US - Canada)

Buttons: Dismiss Group(), Dismiss Selected(), Dismiss Priority(), Dismiss SelectedPriority(), Dismiss SelectedTag(), Dismiss Tag(), Dismiss All(), Dismiss Visible()

---

# InTouch Web Client



# Web browser access

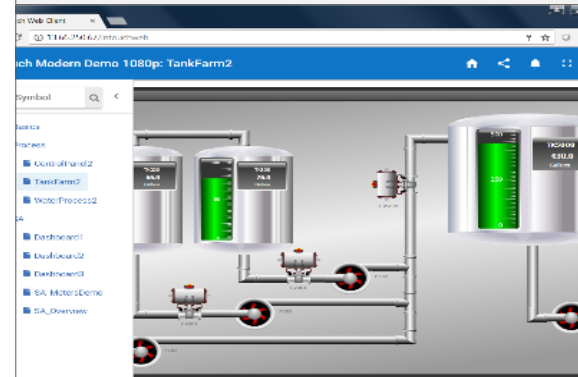
## InTouch Access Anywhere



- Access to InTouch application
- Works with InTouch and OMI
- Multi-Touch & gesture support
- RDS based
- Microsoft Server OS
- Read Write or Read Only



## InTouch Web Client

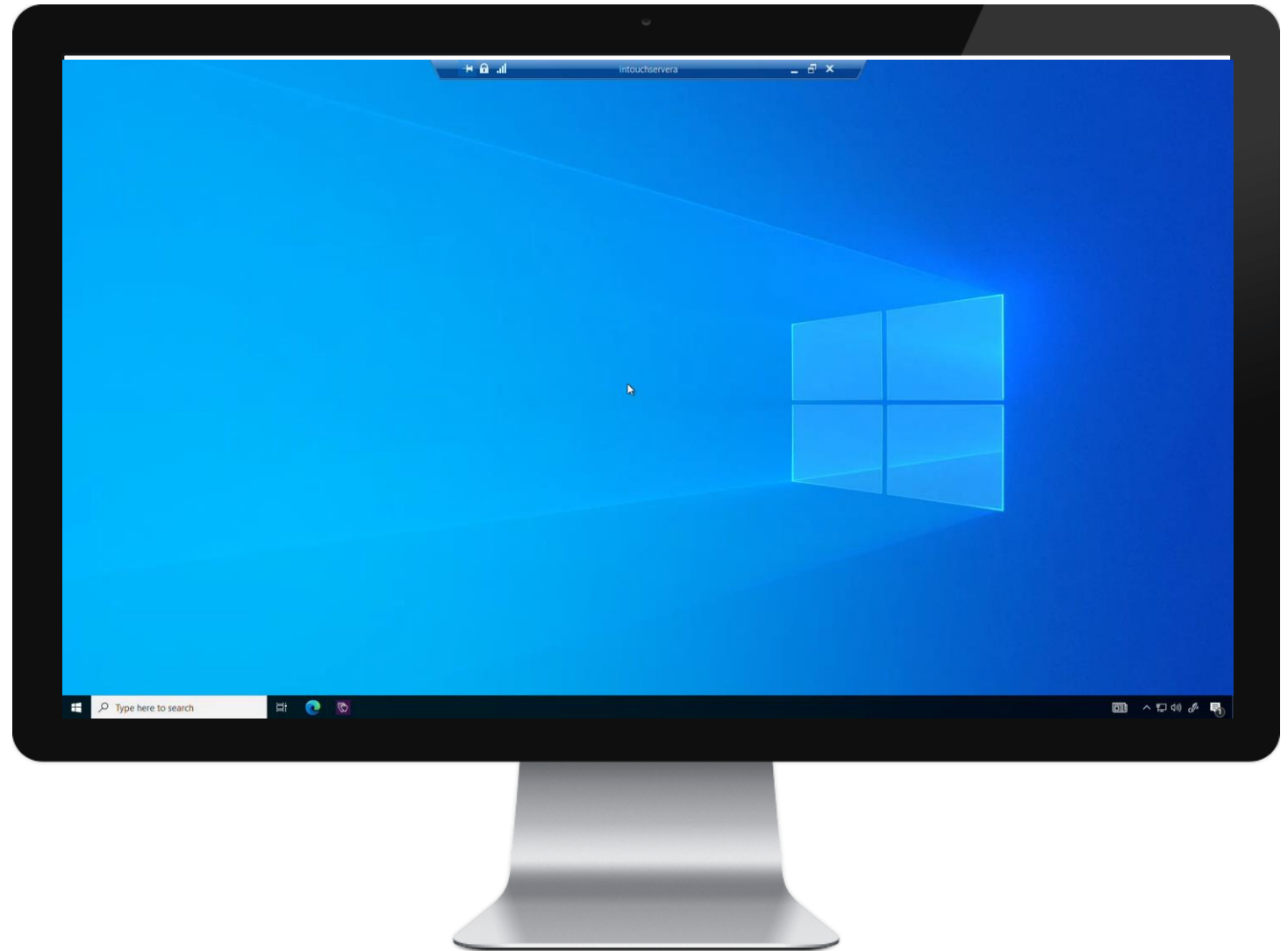


- Access to graphics and windows
- Works with InTouch only
- Low Footprint (alternative ITAA)
- Web server based
- Server or Client Microsoft OS
- Read Write or Read Only



# InTouch Web

- Access InTouch via Web Browser with minimal footprint.
- Access across DMZ with Reverse Proxy in compliance with good network security practices
- Localization Support (German, Japanese, French, Simplified Chinese)



# Workspaces

- Browse connected OPC UA servers
- Select attributes and drag-n-drop into InTouch Model
- Automatic creation of tag, with IO binding and alarm group
- User definable, ad-hoc content



---

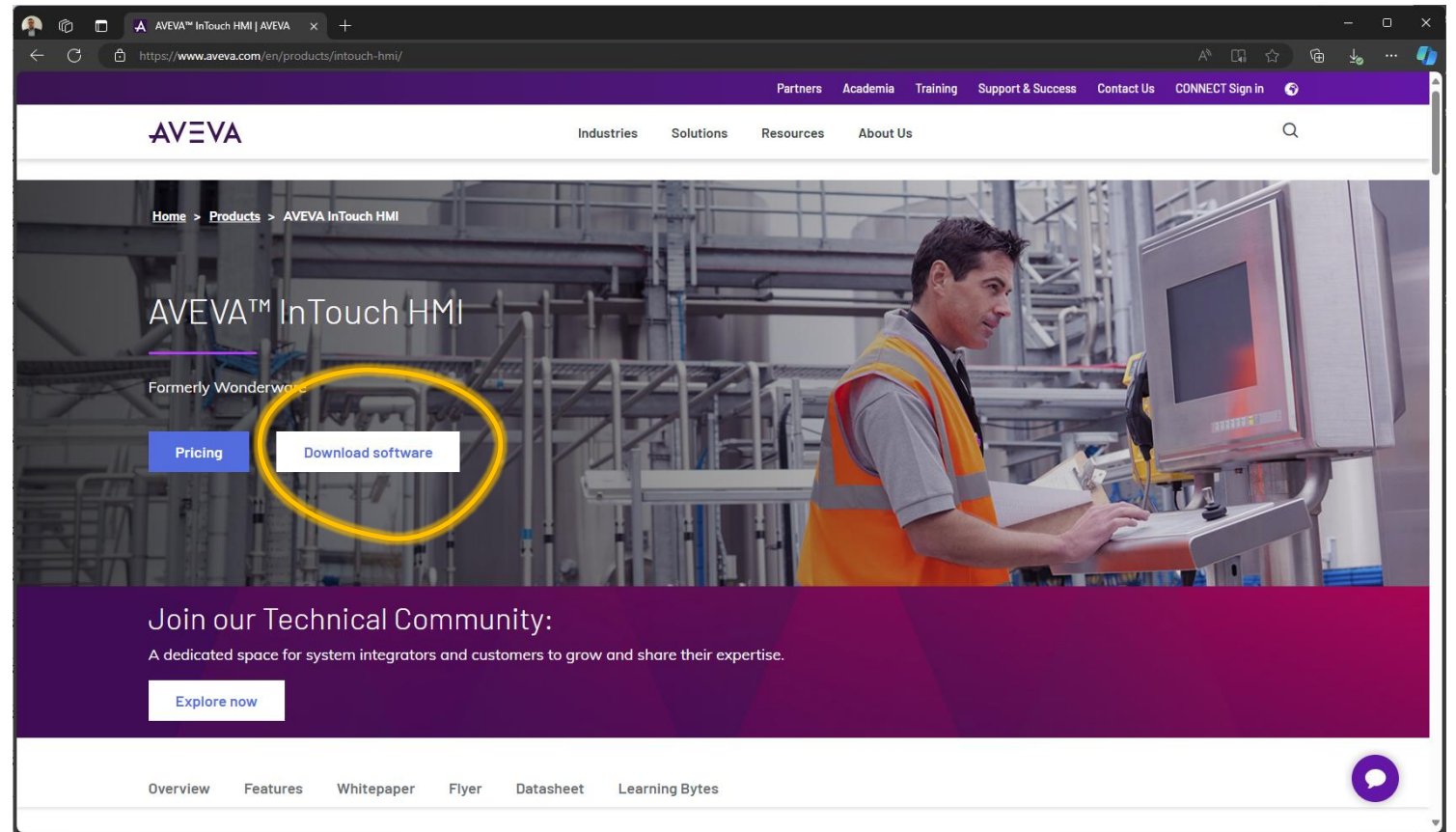
How can I try this out?

**AVEVA**



# Self-service access to InTouch via aveva.com

DOWNLOAD FROM PRODUCT PAGE  
AFTER SIMPLE SELF-SERVICE  
REGISTRATION



# No license? No problem!

Development - WindowMaker



Runtime - WindowViewer



# Need inspiration, or to exchange ideas with peers?

<https://softwareforums.aveva.com/heroes-hq/>

The screenshot shows the AVEVA Software Community website. The main header features the AVEVA logo and a search bar. Below the header is a large banner for 'HEROES HQ' with the tagline 'WHERE TECHNICAL COMMUNITY CONNECTS'. A navigation bar contains icons for Ask, Discover, Learn, Explore, Attend, Socialize, Partners, Suggest, and Success. The main content area is titled 'Top Community Contributors' and lists three discussion topics:

Topic	Description	Questions	Latest Reply
AVEVA™ System Platform & OMI	Ask questions, find answers, and engage in conversation centered around AVEVA™ System Platform and OMI.	77 questions and discussions	RE: Cannot get a SA_h 6 minutes ago
AVEVA™ InTouch HMI	Ask questions, find answers, and engage in conversation centered around AVEVA™ InTouch HMI.	25 questions and discussions	HisTrend w/Scooters an 12 hours ago
General Discussion	A forum for general discussion, broad-overarching technical topics, and conversation that can be beneficial for any community member.	7 questions	RE: Using ChatGPT for 1 day ago

<https://learningacademy.aveva.com/pages/intouch-hmi-learning-bytes>

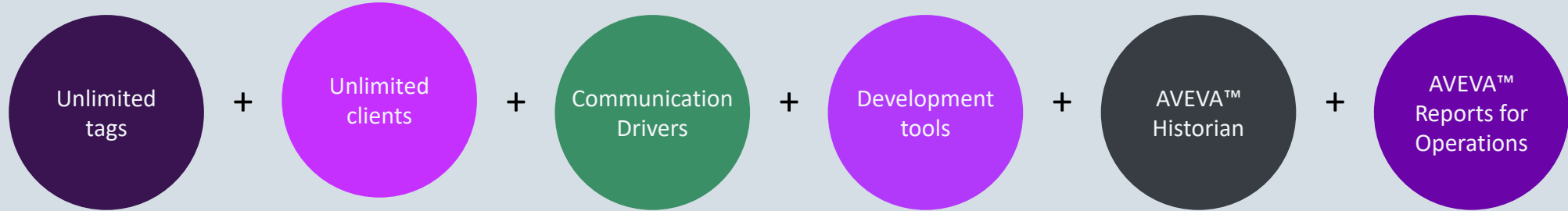
The screenshot shows the AVEVA InTouch HMI Learning Bytes page. The header includes the AVEVA logo, navigation links for Course calendar, Training Tracks, and Learning Bytes, and a Sign In / Register button. The main content area features a large banner with the text 'AVEVA™ InTouch HMI Learning Bytes' and a sub-headline 'Explore our video collection and enhance your skills in about 5 minutes!'. Below the banner is a search bar with the text 'Search for content' and a 'Sort by' dropdown menu. The page also displays a list of video collections under the heading 'Learning Bytes Collections', including 'What is AVEVA™ InTouch HMI?', 'Working with Access Names', and 'Window Types'. A footer section contains a cookie consent message and an 'Accept' button.

---

# Pricing and purchasing update



# InTouch Unlimited



## InTouch *Unlimited* Standard Perpetual license

Build efficient HMIs, communicate with automation devices and controllers, and log historical process data as well as alarms and events

\$12,000

## InTouch *Unlimited* Professional Perpetual license

Scale up to data-intensive applications and manage multi-node deployment. Create and share self-service real-time dashboards. Expose application data through OPC UA Server.

\$20,000

## InTouch *Unlimited* Premier Subscription

Pay-as-you-go commercial model. Same feature set as Professional, adding Unlimited Historian.

Contact distributor

Features	AVEVA™ Operations Control (subscription only)	InTouch Unlimited Premier (subscription only)	InTouch Unlimited Professional (\$20,000)	InTouch Unlimited Standard (\$12,000)
Number of tags	Unlimited	Unlimited	Unlimited	Unlimited
Number of web clients	Unlimited	Unlimited	Unlimited	Unlimited
Number of Remote Desktop clients	Unlimited	Unlimited	Unlimited	n/a
Historian Server tags	Unlimited	Unlimited	5,000 tags	500 tags
Communication Drivers, incl. OPC UA, MQTT	Unlimited	Professional Edition	Professional Edition	Standard Edition
Licensed nodes	Unlimited	2	1*	1*
AVEVA Reports for Operations	Included	Included	Included	
SaaS entitlements (Teamwork, InSight, Dev Studio)	Included			

\* Redundant standby node at ½ price

# InTouch themes



Access the HMI from any device, throughout the workday



Engineering efficiency – Optimization of workflows and engineering experience



Continued commitment to open industry standards, with strong focus on OPC UA and MQTT

# InTouch 2023 R2 What's new Video

- <https://www.youtube.com/watch?v=RRKGp-gvI4w>





This presentation may include predictions, estimates, intentions, beliefs and other statements that are or may be construed as being forward-looking. While these forward-looking statements represent our current judgment on what the future holds, they are subject to risks and uncertainties that could result in actual outcomes differing materially from those projected in these statements. No statement contained herein constitutes a commitment by AVEVA to perform any particular action or to deliver any particular product or product features. Readers are cautioned not to place undue reliance on these forward-looking statements, which reflect our opinions only as of the date of this presentation.

The Company shall not be obliged to disclose any revision to these forward-looking statements to reflect events or circumstances occurring after the date on which they are made or to reflect the occurrence of future events.

 [linkedin.com/company/aveva](https://www.linkedin.com/company/aveva)

 [@avevagroup](https://twitter.com/avevagroup)

#### ABOUT AVEVA

AVEVA is a world leader in industrial software, providing engineering and operational solutions across multiple industries, including oil and gas, chemical, pharmaceutical, power and utilities, marine, renewables, and food and beverage. Our agnostic and open architecture helps organizations design, build, operate, maintain and optimize the complete lifecycle of complex industrial assets, from production plants and offshore platforms to manufactured consumer goods.

Over 20,000 enterprises in over 100 countries rely on AVEVA to help them deliver life's essentials: safe and reliable energy, food, medicines, infrastructure and more. By connecting people with trusted information and AI-enriched insights, AVEVA enables teams to engineer efficiently and optimize operations, driving growth and sustainability.

Named as one of the world's most innovative companies, AVEVA supports customers with open solutions and the expertise of more than 6,400 employees, 5,000 partners and 5,700 certified developers. The company is headquartered in Cambridge, UK.

Learn more at [www.aveva.com](https://www.aveva.com)