

TUCH MODELS

TUCH3618 | TUCH4818

INSTALLATION INSTRUCTIONS

THOR
K I T C H E N®

INSTALLATION INSTRUCTIONS

THOR KITCHEN TUCH SERIES PROFESSIONAL RANGE HOODS

TUCH MODELS

TUCH3618 | TUCH4818



TABLE OF CONTENTS

IMPORTANT SAFETY NOTICE	4
1.1 Read and Save These Instructions	4
1.2 Electrical Requirements	6
PRODUCT FEATURES / SPECIFICATION CHART	6
2.1 Product Features	6
2.2 Specification Chart	7
2.3 Circuit Diagram	7
2.4 Hood Specifications	8
EXPLODED DIAGRAM	9
LIST OF MATERIALS	10
3.1 Parts Supplied	10
3.2 Optional Accessories	10
INSTALLATION GUIDELINES	11
4.1 Location	11
4.2 Exhaust Duct	11
4.3 Position	12
INSTALLATION PROCEDURES	13
5.1 24-inch Height Duct Cover Installation	14
5.2 Recirculating Kit Installation	15
BAFFLE FILTER INSTALLATION, REMOVAL AND MAINTENANCE	17
REPLACING LIGHT STRIP	18
WARRANTY	20

IMPORTANT SAFETY NOTICE

1.1 Read and Save These Instructions

⚠ WARNING

To reduce the risk of fire or electric shock, do not use this fan with any solid-state control device.

CAUTION

For general ventilating use only. Do not use to exhaust hazardous or explosive materials and vapors.

⚠ WARNING

To reduce the risk of fire, electric shock, or injury to persons, observe the following:

- a. Use this unit only in the manner intended by the manufacturer. If you have questions, contact the manufacturer.
- b. Before servicing or cleaning the unit, turn off the power at the service panel and lock the service disconnect to prevent accidental power activation. If locking the disconnect is not possible, securely attach a prominent warning device, such as a tag, to the service panel.

⚠ WARNING

To reduce the risk of a range top grease fire:

- a. Never leave surface units unattended at high settings. Boilovers cause smoking and greasy spillovers that may ignite. Heat oils slowly on low or medium settings.
- b. Always turn the hood ON when cooking at high heat or when flambeing food (i.e. Crepes Suzette, Cherries Jubilee, Peppercorn Beef Flambe).
- c. Clean ventilating fans frequently. Grease should not be allowed to accumulate on fan or filter.
- d. Use proper pan sizes. Always use cookware appropriate for the size of the surface element.

⚠ WARNING

To reduce the risk of injury to persons in the event of a range top grease fire, observe the following*:

- a. SMOTHER FLAMES with a close-fitting lid, cookie sheet, or metal tray, then turn off the burner. BE CAREFUL TO PREVENT BURNS. If the flames do not go out immediately, EVACUATE AND CALL THE FIRE DEPARTMENT.
- b. NEVER PICK UP A FLAMING PAN - You may be burned.
- c. DO NOT USE WATER, including wet dishcloths or towels - a violent steam explosion will result.
- d. Use an extinguisher ONLY if:
 1. You know you have a Class ABC extinguisher, and you already know how to operate it.
 2. The fire is small and contained in the area where it started.
 3. The fire department is being called.
 4. You can fight the fire with your back to an exit.

* Based on "Kitchen Fire Safety Tips" published by NFPA.

IMPORTANT SAFETY NOTICE

⚠ WARNING

To reduce the risk of fire, electric shock, or injury to persons, observe the following:

- a. Installation work and electrical wiring must be done by qualified person(s) in accordance with all applicable codes and standards, including fire-rated construction.
- b. Sufficient air is needed for proper combustion and exhausting of gases through the flue (chimney) of fuel burning equipment to prevent back drafting. Follow the heating equipment manufacturer's guideline and safety standards such as those published by the National Fire Protection Association (NFPA), and the American Society for Heating, Refrigeration and Air Conditioning Engineers (ASHRAE), and the local code authorities.
- c. When cutting or drilling into wall or ceiling, do not damage electrical wiring and other hidden utilities.
- d. Ducted fans must always be vented to the outdoors.
- e. NEVER place a switch where it can be reached from a tub or shower.
- f. Make sure the power is off before installing, wiring or maintaining

To Reduce The Risk Of Fire, Electric Shock Or Injury To Persons, Do Not Use Replacement Parts That Have Not Been Recommended By The Manufacturer (e.g. Parts Made At Home Using A 3D Printer).

⚠ WARNING

To reduce the risk of fire, use only metal ductwork.

CAUTION

To reduce risk of fire and to properly exhaust air outside - Do not vent exhaust air into spaces within walls, ceilings, attics, crawl spaces or garages

⚠ WARNING

GROUNDING INSTRUCTIONS

This appliance must be grounded. In the event of an electrical short circuit, grounding reduces the risk of electric shock by providing an escape wire for the electric current. This appliance is equipped with a cord having a grounding wire with a grounding plug. The plug must be plugged into an outlet that is properly installed and grounded.

WARNING - Improper grounding can result in a risk of electric shock.

Consult a qualified electrician if the grounding instructions are not completely understood, or if doubt exists as to whether the appliance is properly grounded.

Do not use an extension cord. If the power supply cord is too short, have a qualified electrician install an outlet near the appliance.

OPERATION

Always leave safety grilles and filters in place. Without these components, operating blowers could catch onto hair, fingers and loose clothing. The manufacturer declines all responsibility in the event of failure to observe the instructions given here for installation, maintenance and suitable use of the product. The manufacturer further declines all responsibility for injury due to negligence and the warranty of the unit automatically expires due to improper maintenance.

CALIFORNIA PROPOSITION 65 WARNING

⚠ WARNING

This appliance contains chemicals known to the State of California to cause cancer and/or reproductive harm, and birth defects or other reproductive harm. For more information go to www.P65Warnings.ca.gov.

IMPORTANT SAFETY NOTICE

1.2 Electrical Requirements

Important: Observe all governing codes and ordinances.

It is the customer's responsibility:

- To contact a qualified electrical installer.
- To assure that the electrical installation is adequate and in conformance with National Electrical Code, ANSI/NFPA 70 latest edition* or CSA standards C22.1-94, Canadian Electrical Code, Part 1 and C22.2 No.0-M91 - latest edition** and all local codes and ordinances.

* National Fire Protection Association Batterymarch Park, Quincy, Massachusetts 02269

** CSA International 8501 East Pleasant Valley Road, Cleveland, Ohio 44131-5575

If codes permit and a separate ground wire is used, it is recommended that a qualified electrician determine that the ground path is adequate.

Do not ground to a gas pipe.

Check with a qualified electrician if you are not sure the range hood is properly grounded.

Do not have a fuse in the neutral or ground circuit.

This appliance requires a 120V / 60Hz electrical supply and connected to an individual properly grounded branch circuit protected by a 15 or 20 ampere circuit breaker or time delay fuse. Wiring must be 2 wire with ground. Please also refer to Electrical Diagram on product.

A cable locking connector (not supplied) might also be required by local codes.

Check with local requirements, purchase and install appropriate connector if necessary.

PRODUCT FEATURES / SPECIFICATION CHART

2.1 Product Features

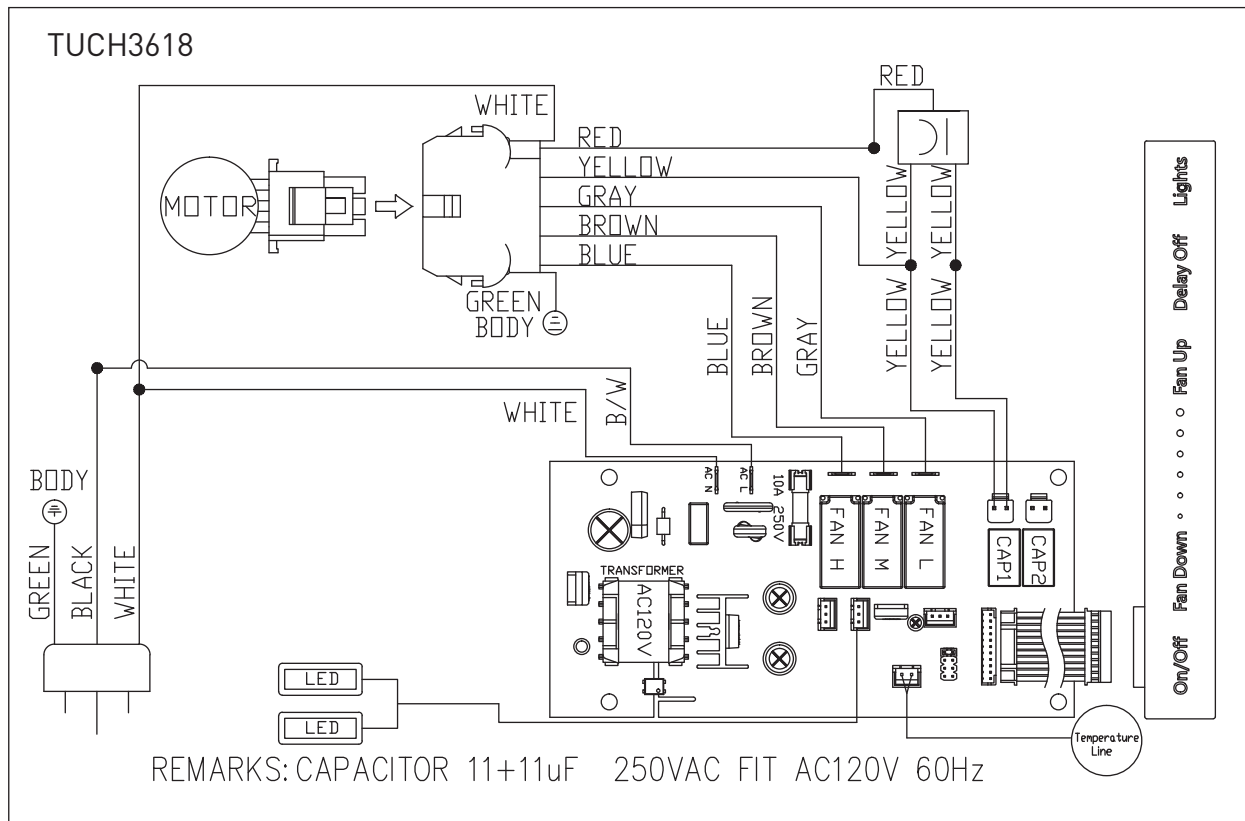
1. 6-speed options.
2. Dual level lighting: Bright, Dim and Off.
3. Gesture control function: Turn On and Off, adjust the fan speed.
4. Heat sensor: Automatically detect temperature and turn on and off the hood.

PRODUCT FEATURES / SPECIFICATION CHART

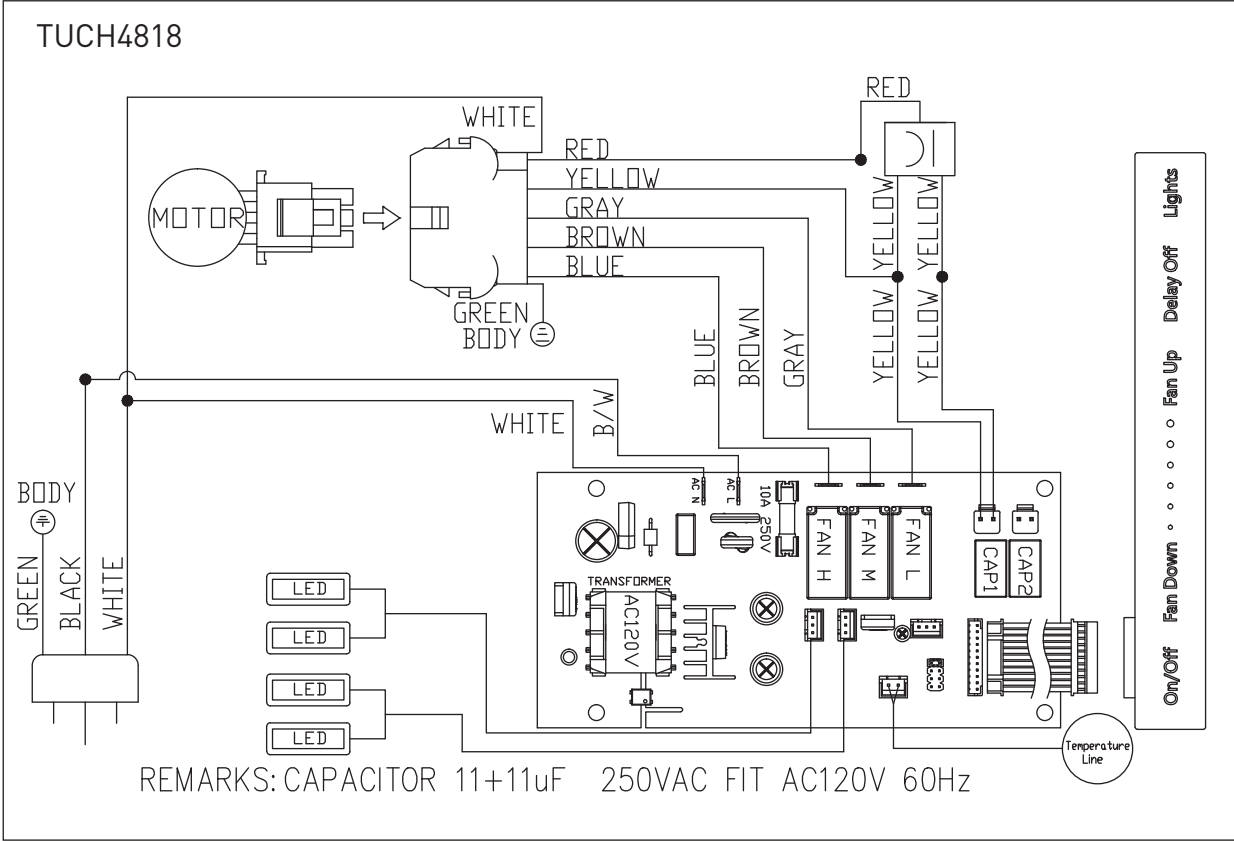
2.2 Specification Chart

Models	TUCH3618 / TUCH4818
Net Weight (lbs)	56.2lbs / 67.2lbs
Product Dimension (inches)	(W)35-7/8 x (D)24" x (H)18" (W)47-7/8 x (D)24" x (H)18"
Cutout Dimension (inches)	[W]10" x [D]11"
Maximum Voltage	120V – 60Hz
Exhaust Pipe Diameter	Round 8 inches
Light	6W LED x2 for 36", x4 for 48"
Certification	

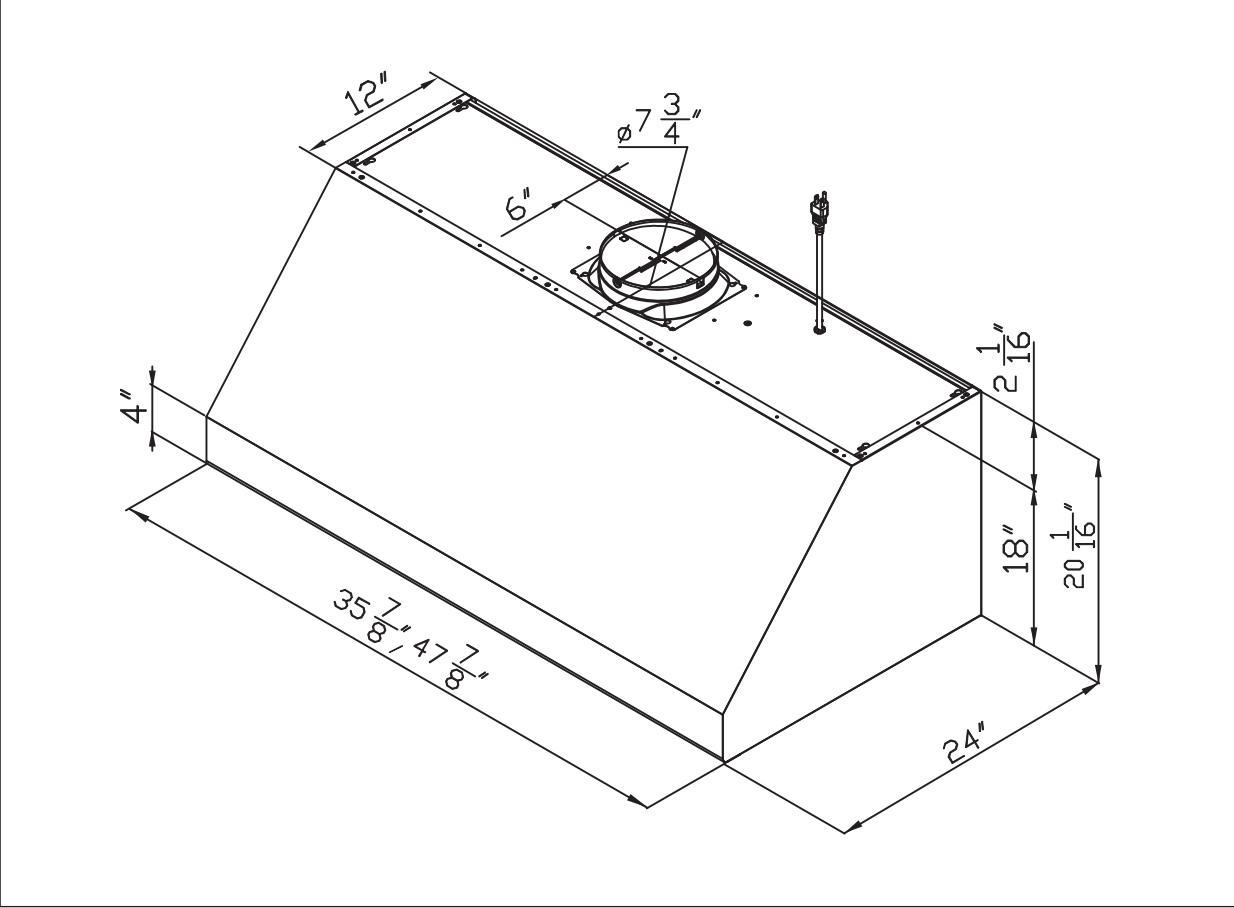
2.3 Circuit Diagram



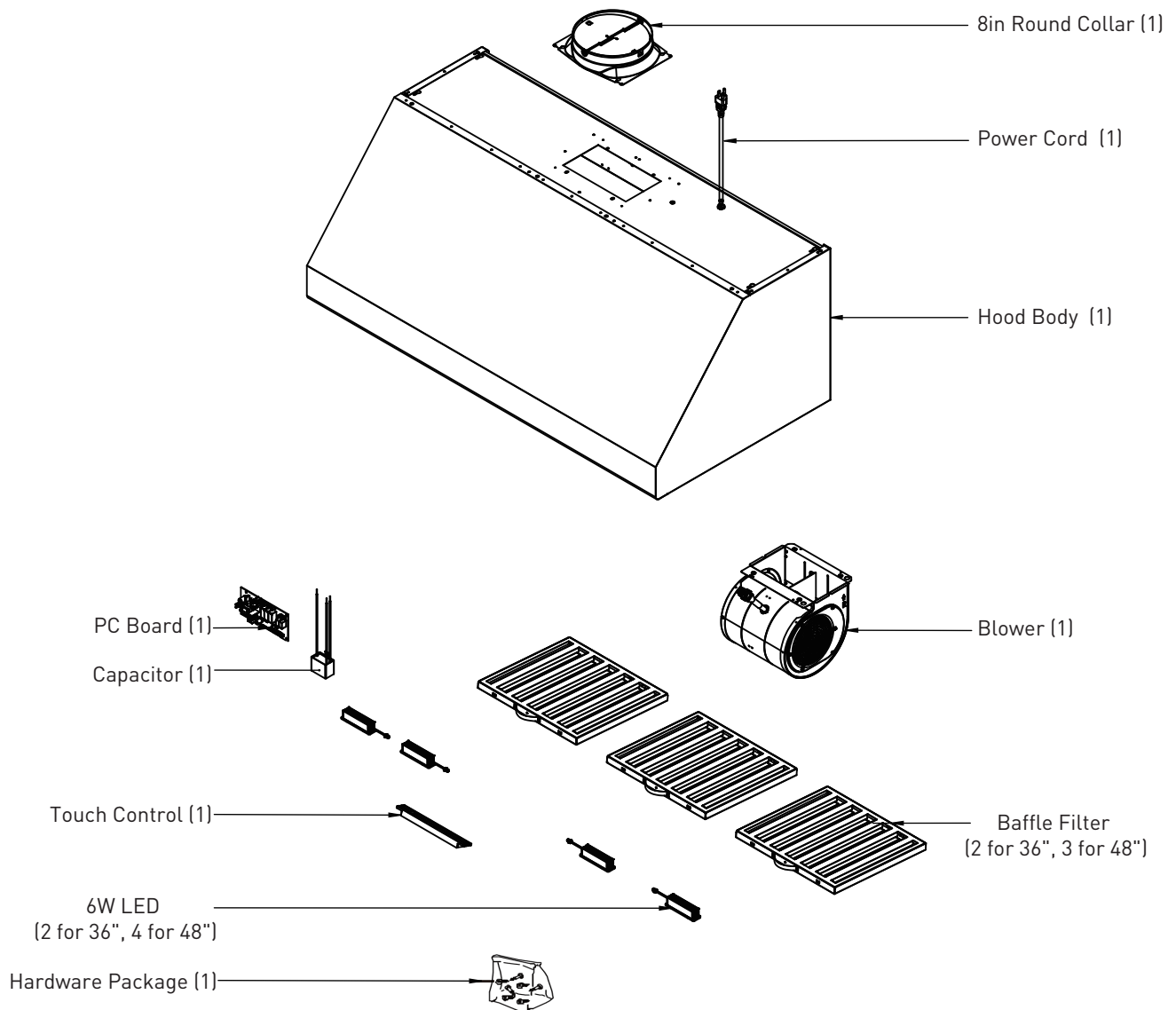
PRODUCT FEATURES / SPECIFICATION CHART



2.4 Hood Specifications

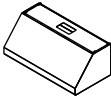
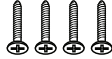

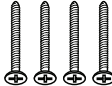

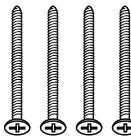




EXPLODED DIAGRAM



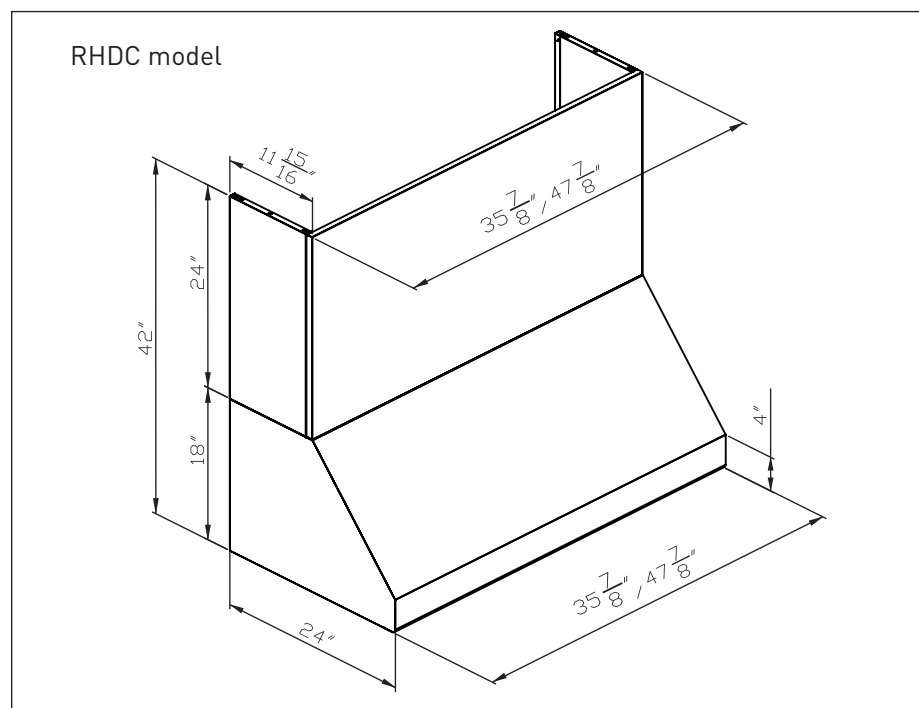
LIST OF MATERIALS

3.1 Parts Supplied

Standard configuration			Hardware package content		
Hood		1	#6 x 1" Wood Screw		4
Installation Guide		1	#6 x 1-1/2" Wood Screw		4
8" round Duct Collar		1	#6 x 2" Wood Screw		4
Hardware Package		1			
			M4 x 8mm Truss Head Screw		4

3.2 Optional Accessories

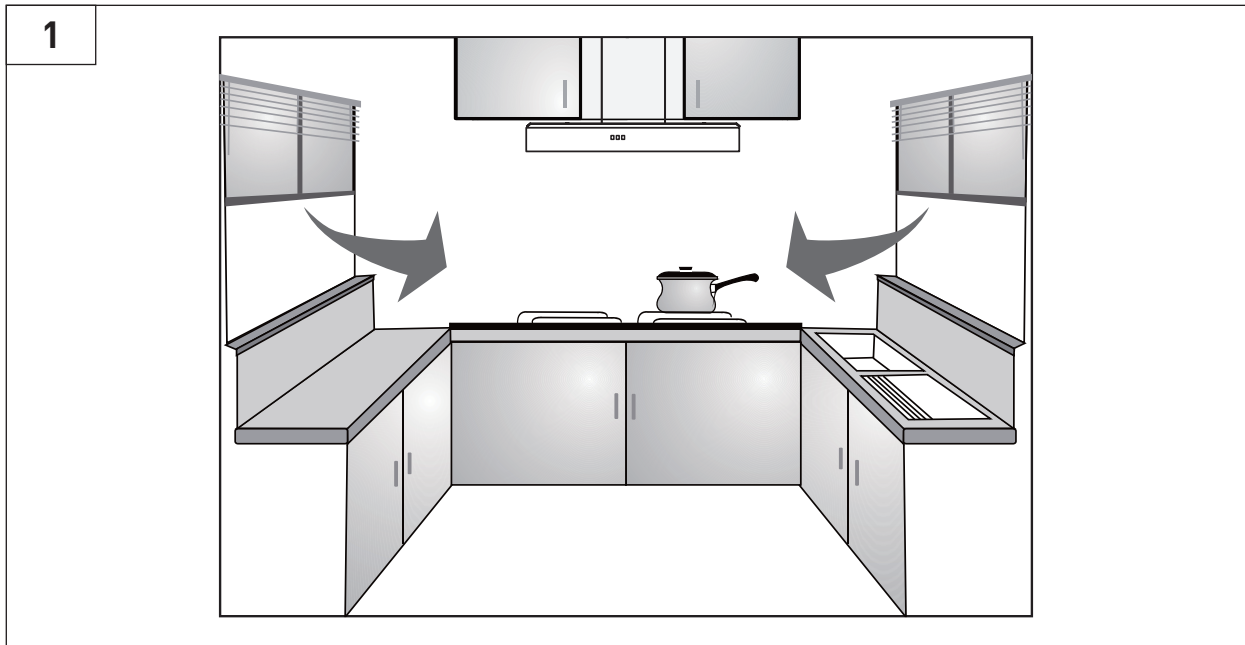
Description		Part Number
24-inch Height Duct Cover	36"	RHDC36TU24
	48"	RHDC48TU24
Recirculating Kit	36"	TRC3618
	48"	TRC4818
Charcoal Filter		FT3648TU



INSTALLATION GUIDELINES

4.1 Location

- Air turbulence from window/door may reduce the effectiveness of hood. It is suggested to close window/door before using hood. (**FIG. 1**)
- The smoke has to rise up to 10 inches from cook top in order to reach hood's suction efficiency range.



4.2 Exhaust Duct

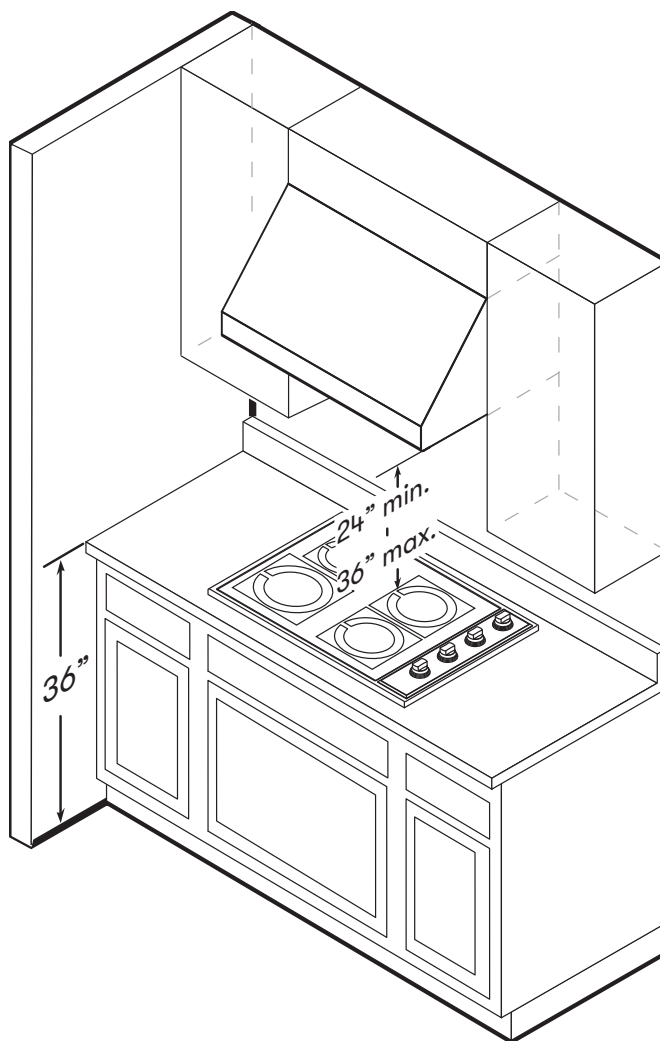
- 8" diameter exhaust duct is recommended to use in order to maximize suction efficiency reduce gap.
- Before installing the range hood, securely attach the **duct collar** to the vent opening on the top of the range hood using heat-resistant metal tape.
- Once the duct collar is in place, connect the exhaust duct to the collar and seal all joints with heat-resistant metal tape to ensure a tight, secure fit.

INSTALLATION GUIDELINES

4.3 Position

- The installation height is measured vertically from the center of the hood's baffle filter to the surface of the cooktop.
- The min height is 24 inches and the max installation height is 36 inches for gas hob. (**FIG. 2**)
- Avoid left-right or front-dropped inclination.

2

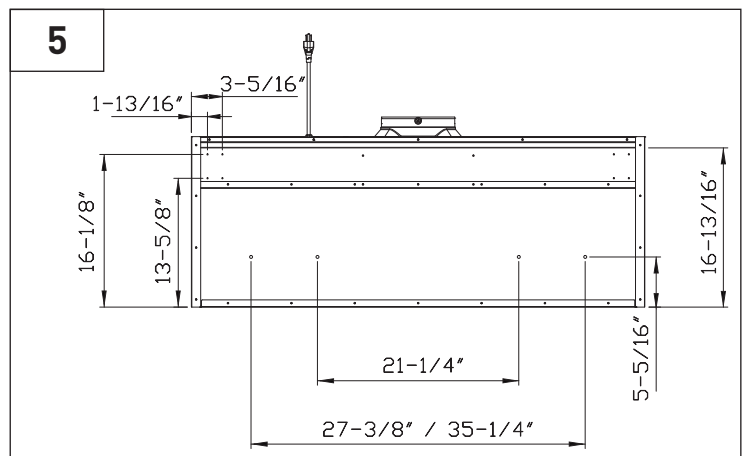
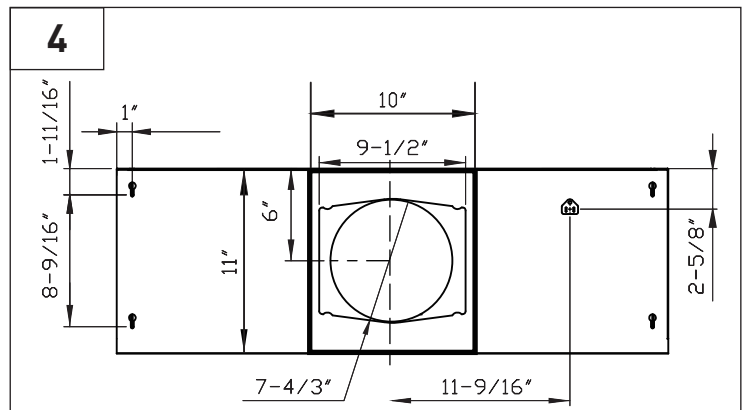
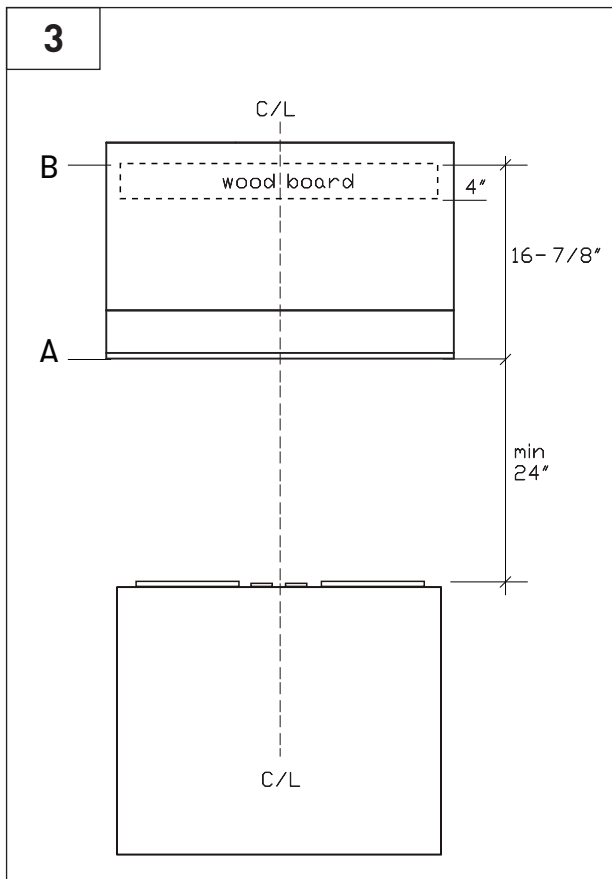


INSTALLATION PROCEDURES

CAUTION

At least two installers are required due to the weight and size of the hood.

1. Remove all packing materials and protective film prior to installation. Use caution during installation to prevent scratches or damage to the stainless steel.
2. Remove baffle filters by following the steps on page 17.
3. Draw and mark the centerline on the wall.
4. Choose desired height above cooking surface (24" min). Level and mark hood bottom, line A (**FIG. 3**)
5. Level and mark top of wood board, line B (**FIG.3**) 16-7/8" from line A.
6. Mark center line of wood board. Center and align top of board with line B.
Secure wood board to studs using (4) #6 wood screws.
Wood Board Dimensions: (W x D x H) TRC3618 - 33" x 1/2" x 4"
TRC4818 - 45" x 1/2" x 4"
7. Prepare duct pipe and duct cut outs in upper cabinet if needed, see dimensions in (**FIG.4**).
8. Prepare electrical wiring and electrical cut outs in upper cabinet if needed.
9. Mount hood onto wood board and secure using (4) #6 wood screws.
10. Further secure hood onto wall through lower body screw holes by (2) #6 wood screws.
See dimensions in (**FIG. 5**).
11. Install electrical.
12. Secure 8" round ducting collar to top of hood by (4) M4 x 8mm screws.
13. Install duct work and seal with heat-resistant metal tape.
14. Power up hood and check for leaks around metal tape.
15. Install baffle filters.



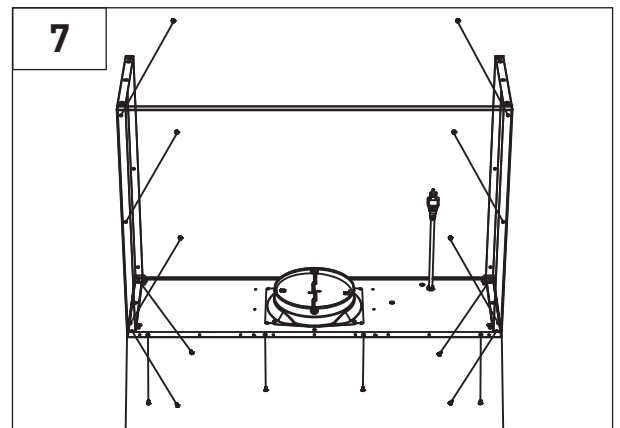
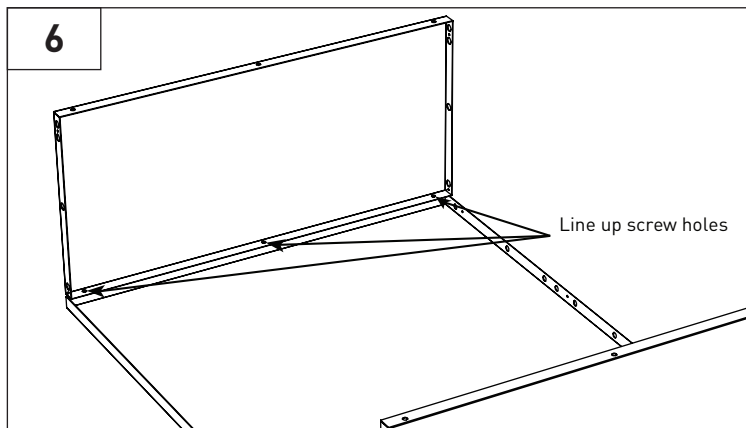
INSTALLATION PROCEDURES

5.1 24-inch Height Duct Cover Installation

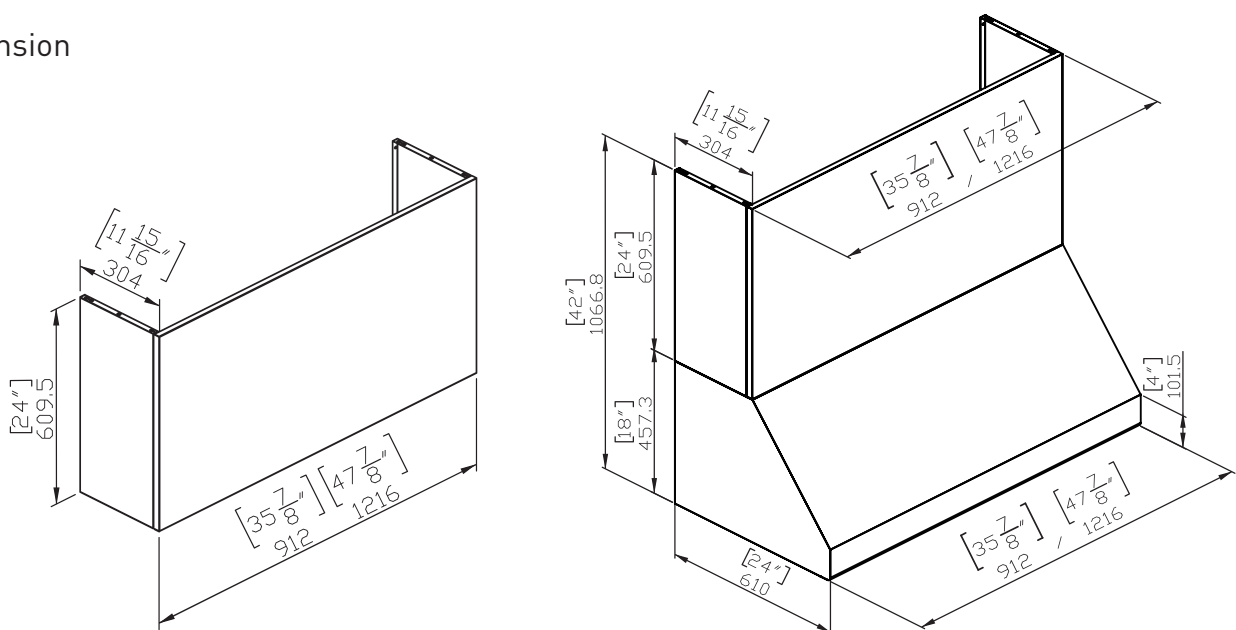
For detailed installation instructions, please refer to the manual included with the duct cover. The duct cover includes the Center panel, Side panels, and Philips head metal screws.

HOOD MODEL	24-INCH HEIGHT DUCT COVER PART NUMBER
TUCH3618	RHDC36TU24
TUCH4818	RHDC48TU24

1. Align the screw holes and attach the left and right side panels to the center using the provided screws (FIG. 6).
2. Place the assembled duct cover on top of the hood, ensuring screw holes of the center panel are facing down and aligned with the holes on top of the hood.
3. Secure the duct cover to the top by fastening the remaining screws to it from within the inside of the hood (FIG. 7).



Dimension



INSTALLATION PROCEDURES

5.2 Recirculating Kit Installation

For detailed installation instructions, please refer to the manual included with the recirculating kit. The kit includes the carbon filter cartridges, carbon filter adapters, and air diverter box.

HOOD MODEL	RECIRCULATING KIT PART NUMBER	FILTERS IN PACKAGE	CHARCOAL FILTER PART NUMBER	QUANTITY TO ORDER
TUCH3618	TRC3618	2	FT3648TU	2
TUCH4818	TRC4818	3		3

Mounting the Diverter Box

1. Position the air diverter box under cabinet. Using a pencil, mark the keyhole locations for the #6 x 1" screws (4 keyholes for 36" models, 6 for 48" models), as well as the location for the electrical knockout opening. Remove air diverter box and install the (4 or 6) #6x 1" screws. Do not tighten screws completely. Drill out the electrical knockout opening.

Note: Reinforce cabinet with 1" x 2" wood strips if additional strengthening is required or if cabinets are framed.

2. Lift air diverter box and align the holes on top of the air diverter box with the screws that were recently installed. Slide the air diverter box towards the wall to temporarily secure it in place. Hand-tighten the (4 or 6) screws. (Fig. 8)
3. Lift the range hood and align the keyholes on top of the hood with the screws protruding from the bottom of the air diverter box. Slide hood towards wall to temporarily secure it in place. Hand-tighten the (4) screws. (Fig. 8)
4. To further secure the hood to the air diverter box by, fasten M4 x 8 screws and 3/16 x 3/8" screws to each of the (8) holes on the bottom of the air diverter box. These screw holes can be accessed from within the hood. The holes on top of the TUCH will align with the holes on the bottom of the air diverter box. (Fig. 9)

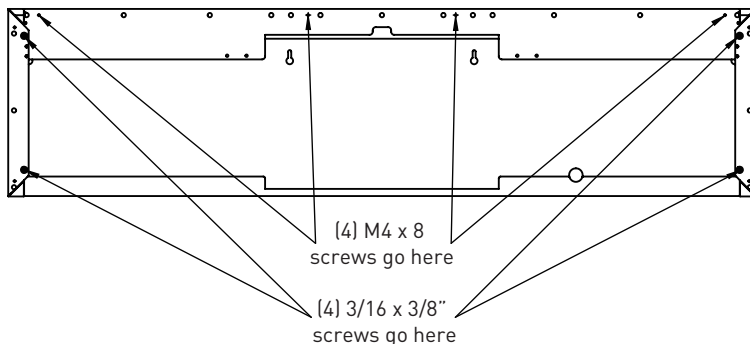


Fig. 9

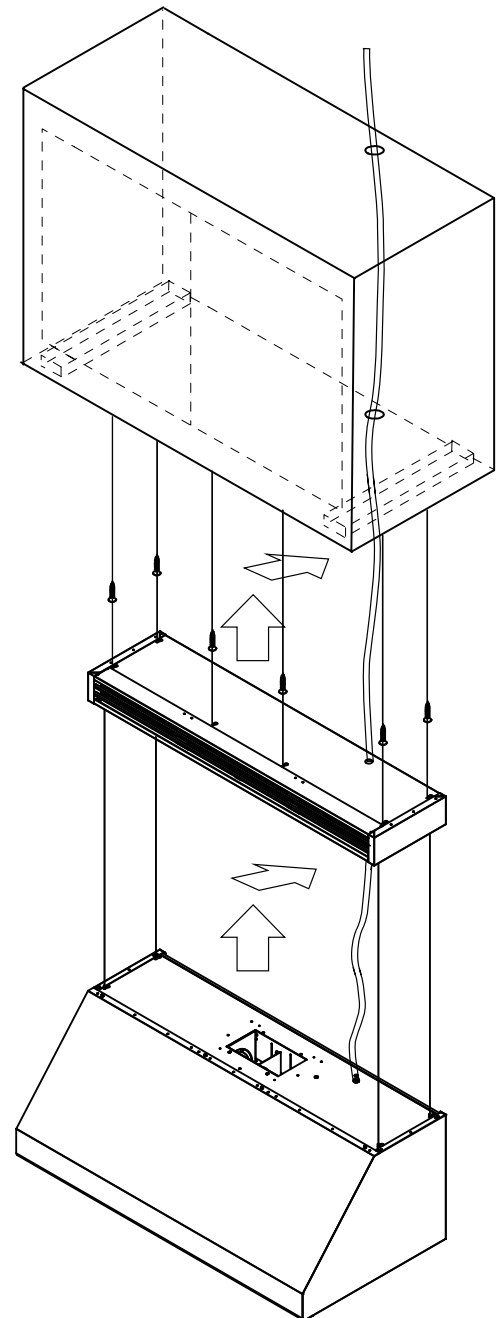


Fig. 8

INSTALLATION PROCEDURES

Charcoal Filters and Brackets

1. Mounting the Bracket and Baffle Filter

Insert the charcoal filter bracket into back side of baffle filter (the side without handles). The (2) tabs on the bottom of the bracket should be inserted into the baffle filter first. Push the bracket towards the baffle filter to lock it in place. There is a clip on top of the bracket that will secure it to the baffle filter. (Fig. 10) Repeat this step for each bracket.

2. Mounting the Bracket and Charcoal Filter

First insert the tab cut out on the charcoal filter onto either side of the tab insert on the bracket. Then, clip the self-locking tabs onto the bracket to secure the filter.

Insert the charcoal filter into the bracket, ensuring the tab cut-out side of the filter is positioned first. Then, press down on the filter to lock in place. (Fig. 11)

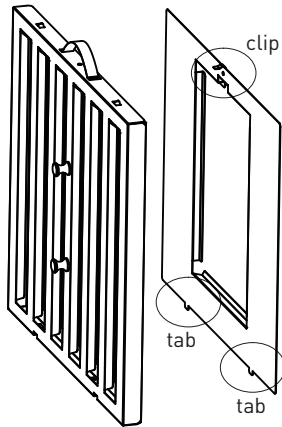


Fig. 10

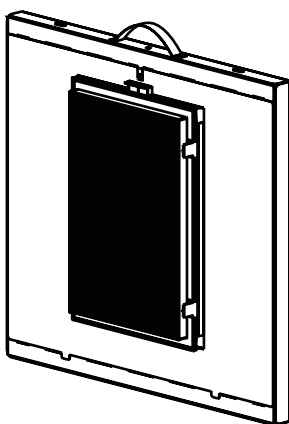
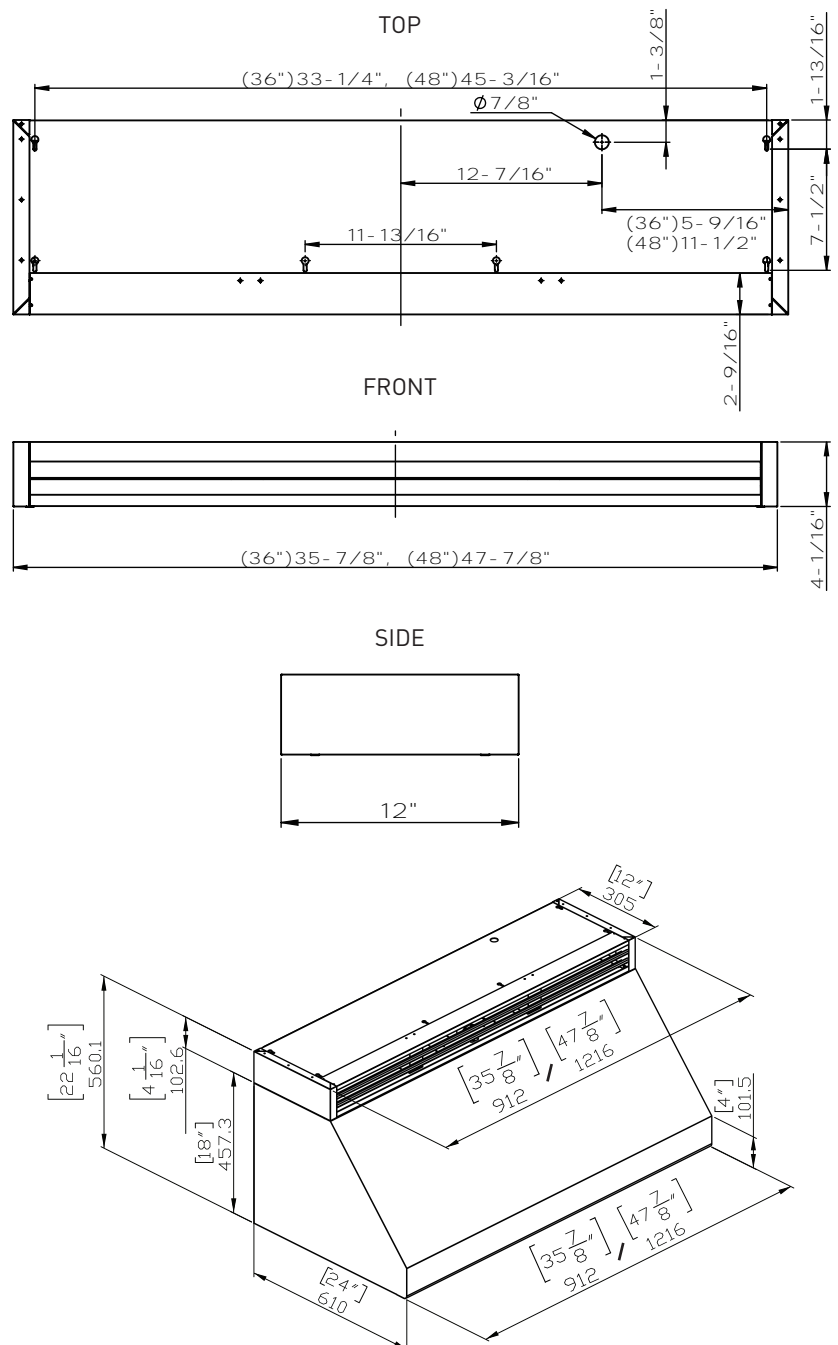


Fig. 11

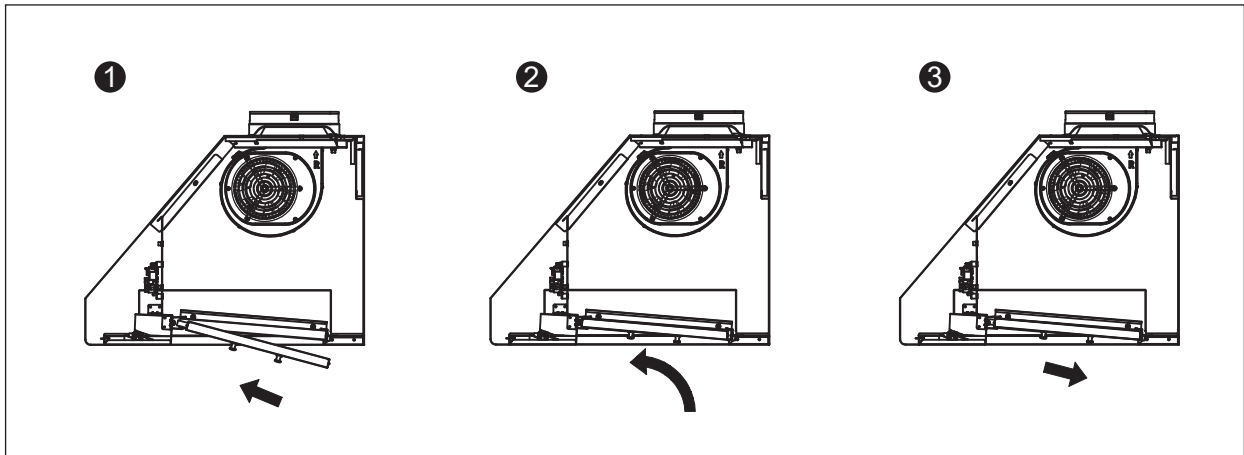
Dimension



BAFFLE FILTER INSTALLATION, REMOVAL AND MAINTENANCE

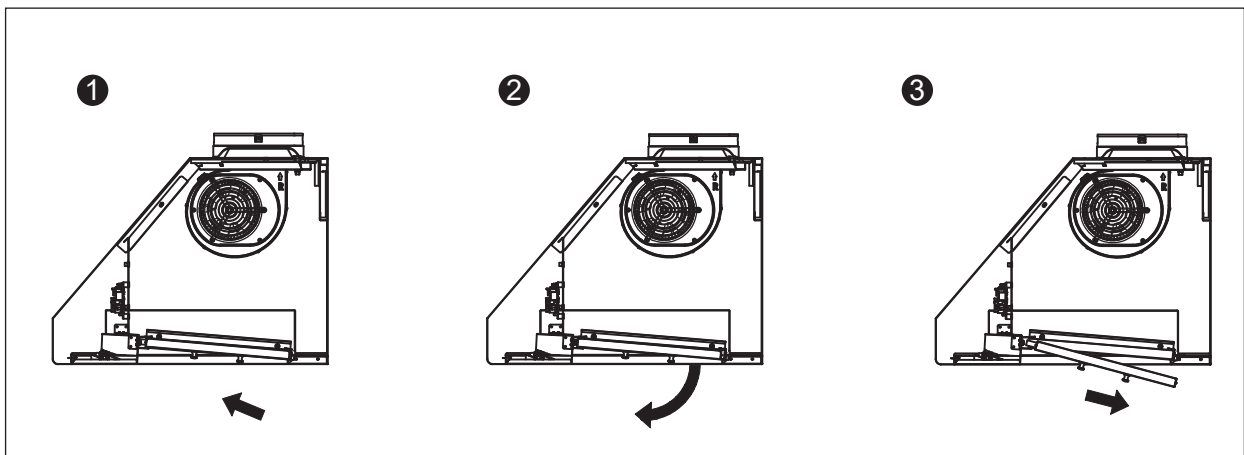
Installing the Baffle Filters

1. Insert the filter into the top groove of the liner, ensuring it is properly aligned. Pull the filter towards the front of the liner using the handles.
2. Tilt the back of the filter upward so it is angled within the liner.
3. Slide the back of the filter into the channel at the rear of the liner to securely lock it in place.



Removing the Baffle Filters

1. Pull the filter towards the front of the liner.
2. Pivot the rear of the filter downward.
3. Slide the filter out of the channel at the front of the liner to remove it.



Cleaning the Baffle Filters

The filters are designed to capture grease and cooking residue. While they generally do not require replacement, they should be cleaned every 30 days, or more frequently depending on usage.

Filters can be cleaned either in the dishwasher on a low-heat setting or by soaking them in hot, soapy water. Ensure the filters are thoroughly dried before reinstalling them into the hood.

REPLACING LIGHT STRIP

LED Light:

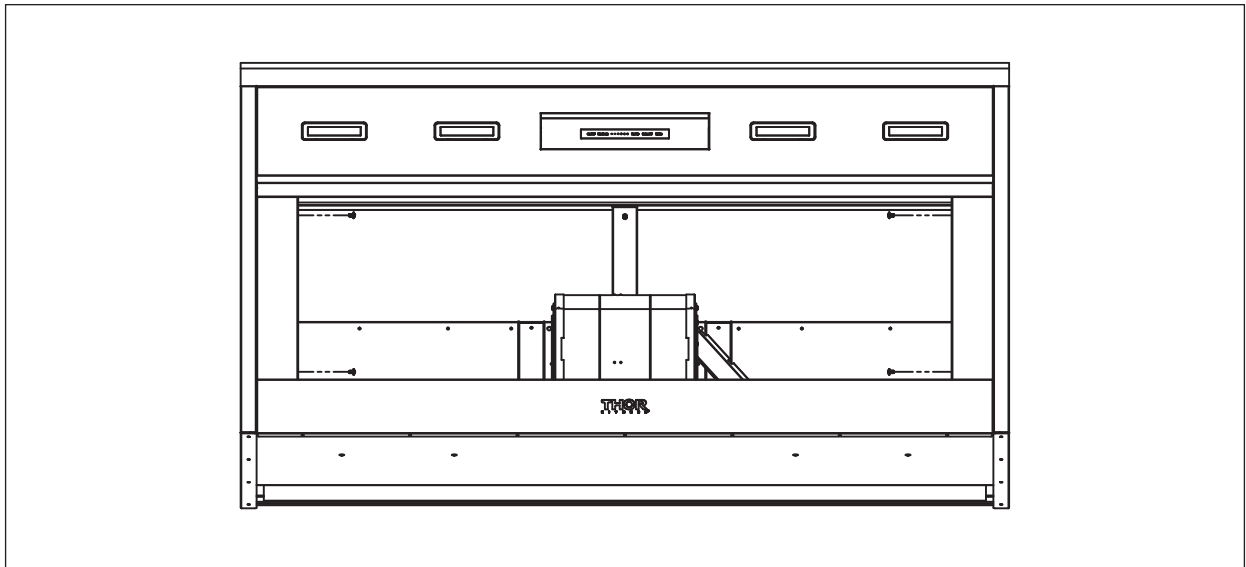
For LED light strip replacement or service, please contact Thor Kitchen customer service or parts department at (877) 288 - 8099.

⚠ WARNING

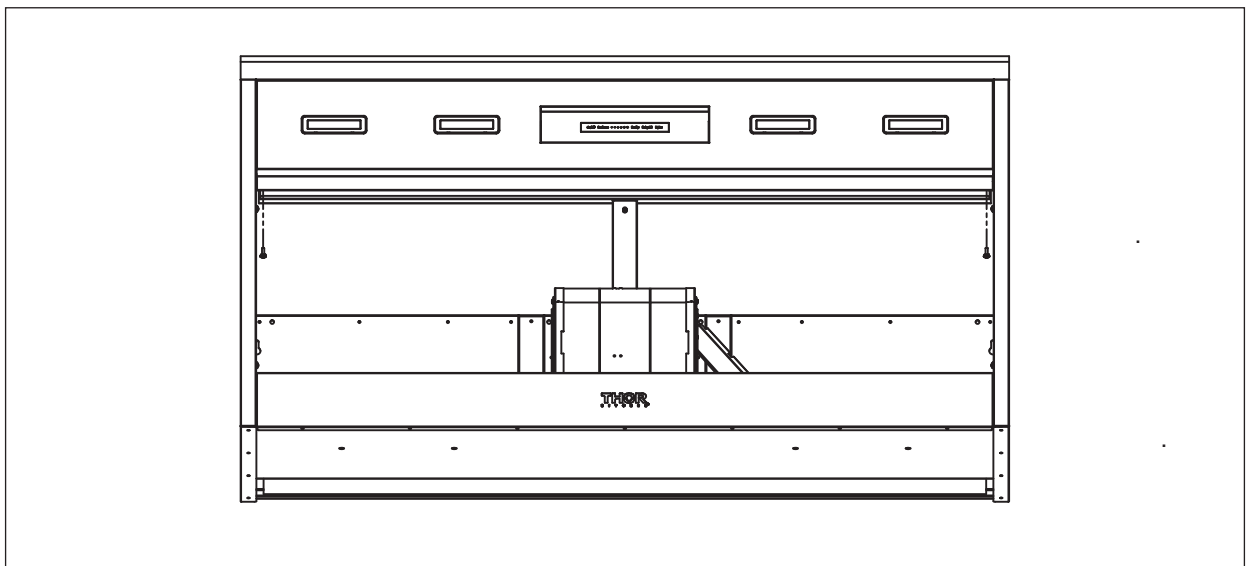
Improper installation, service, or maintenance may cause injury or damage. Refer to this manual for detailed instructions. All other service should be performed by an authorized service provider.

Failure to follow these instructions can result in serious injury, fire, or electrical shock.

1. After turning off the power, remove baffle filters.
2. To remove the side panel, remove the two screws on both sides (as shown in the figure below).

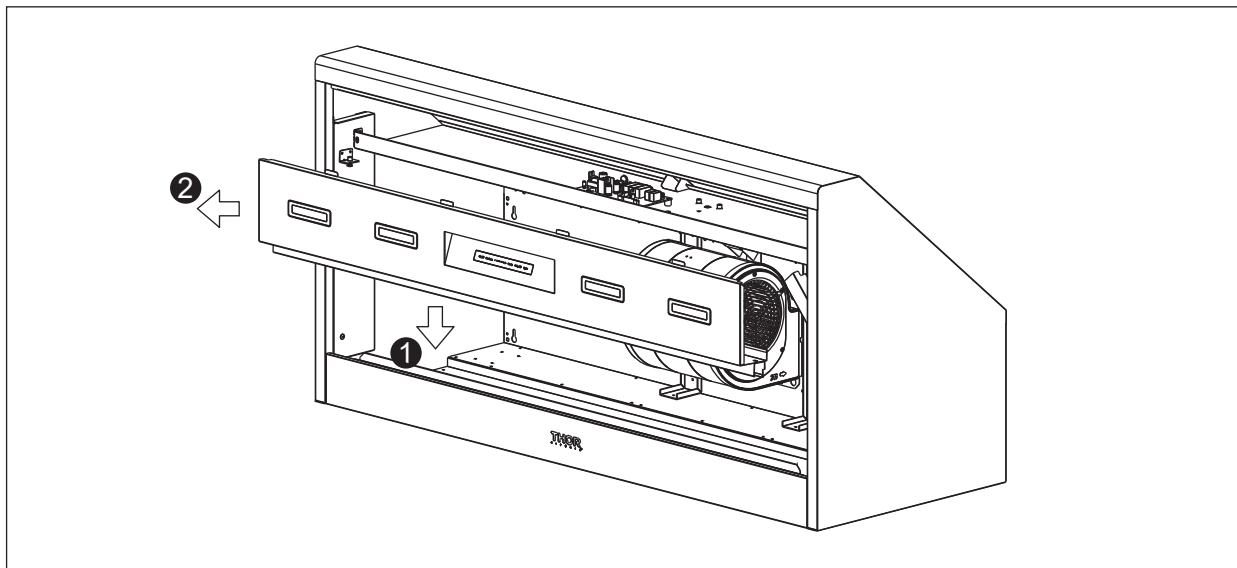


3. To remove the light panel, remove the two screws on both sides (as shown in the figure below).

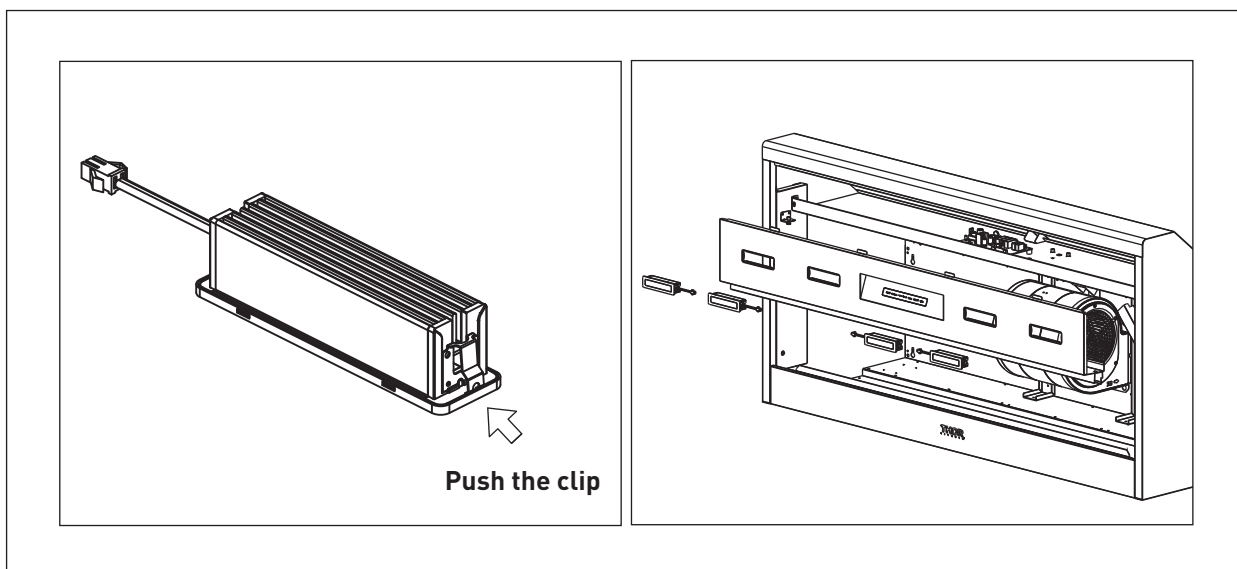


REPLACING LIGHT STRIP

4. In order to remove the light panel, press the light panel down and then pull it forward to remove.



5. Disconnect the LED light quick connector.
6. Simultaneously press the clips on both sides of the LED light strip and gently remove it.



WARRANTY



Warranty & Service

This product has been manufactured by Thor International, 4651 E Airport Drive, Ontario, CA, 91761

For Customer Service, please call (877) 288 - 8099

For the most up to date warranty and service policy, please refer to our website

WWW.THORKITCHEN.COM/WARRANTY-REGISTRATION

For in-warranty service requests, please visit our website at

WWW.THORKITCHEN.COM/SERVICE

Please Note: You must provide proof of purchase or installation date for any in-warranty service requests.

WELCOME TO THE CLUB

You chose THOR Kitchen to enhance your culinary journey and we're stoked to have you in the club. Think of it as a secret society of really savvy people, such as yourself, choosing professional power and performance at an affordable price.



Register your product by following the steps below.

WARRANTY REGISTRATION



Scan the QR code or visit
thorkitchen.com/warranty



Input your product info
and select register



You're done.
Let's get cookin'.

WARRANTY



NEED PARTS?

