



Product: 24-Inch Built-In Microwave Oven with Drop-Down Door in Stainless Steel

Model Number: TM024H

TECHNICAL DETAILS

| | |
|--------------------------|----------------------|
| Installation Type | Built-In |
| Microwave Interior Light | LED |
| Door Opening Direction | Drop Down |
| Color | Stainless Steel |
| Cavity Capacity | 1.6 cu. ft. |
| Microwave Power | 950 W |
| Convection Element | 1700 W |
| Broil Element | 1700 W |
| Bake Element | 600 W |
| Circuit Breaker | 20 A (Dedicated) |
| Volts | 120 V |
| Frequency | 60 Hz |
| Plug Type | NEMA 5-20p - 3 Prong |
| Power Cord Length | 61" |



FEATURES & BENEFITS

- Sensor Cooking:** Adjusts cooking time and power for perfect results using sensor tech.
- Cooking Modes:** Softens, air fries, broils, and more for seamless cooking transitions.
- True Convection:** Even heat distribution for consistent results on every rack.
- Touch LCD Display:** Intuitive controls with clear navigation and cooking tips.
- Generous Capacity:** Fits large dishes with a 1.6 cu. ft. interior for family meals.
- Control Panel Lock:** Prevents unintended use and simplifies cleaning for safety.
- Sabbath Mode:** Disables sounds/lights when using the oven function, limits to Traditional Bake mode, and allows cooking for up to 74 hours.

CONTROL PANEL DETAILS/ FEATURES

| | |
|----------------------------|--|
| Sensor Cook | Yes |
| Defrost | Yes |
| Child Safety Lock | Yes |
| Control Lock | Yes |
| Power Levels | 10 |
| 10 Cooking Modes | Microwave: Soften/Melt, Defrost, Popcorn, Sensor Cook, Sensor Reheat, Beverage Center Oven: Convection, Broil, Air Fry, Pizza |
| Audible Signal Elimination | Yes |
| Sound On/Off | Yes |
| Memory/Kitchen Timer | Yes |
| Start/Add-30Sec | Yes |
| Timer/Clock | Yes |

ACCESSORIES (INCLUDED)

| |
|-------------------------|
| Turntable |
| Baking Rack |
| 14" White Ceramic Plate |



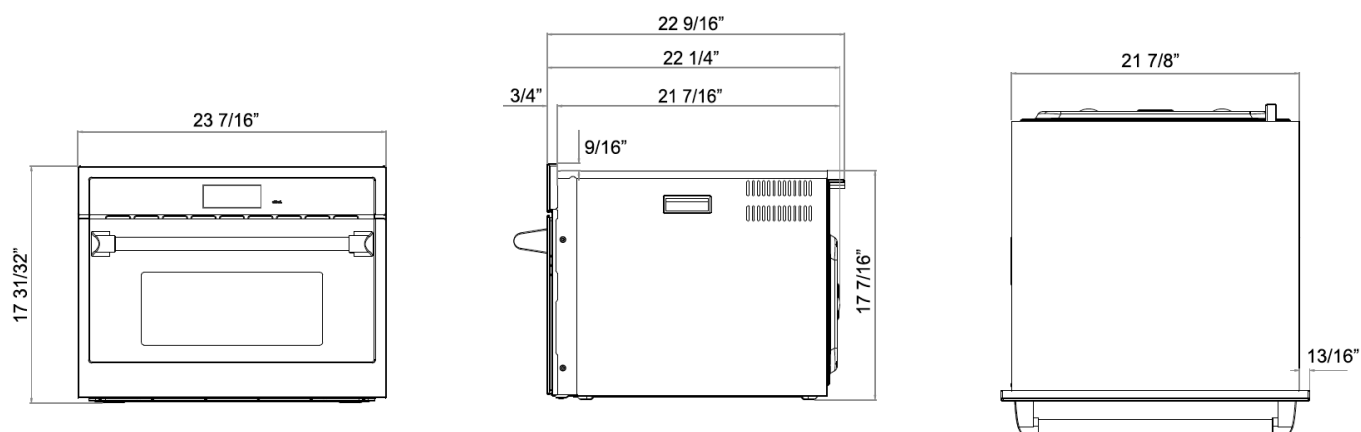
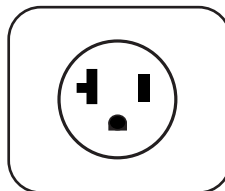
WARRANTY: 2 YEARS PARTS AND LABOR



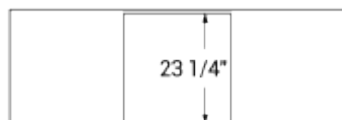
PRODUCT DIMENSIONS & WEIGHT

| | |
|----------------------------|---|
| Product Dimensions (WxDxH) | 23-7/16" x 21-1/4" x 17-31/32" |
| Cavity Dimensions (WxDxH) | 16-9/16" x 16-9/16" x 9-13/16" |
| Cutout Dimensions (WxDxH) | Standard: 22-3/8" x 23-1/4" x 17-13/16" Flush: 23-11/16" x 24" x 18-1/8" |
| Turnable Diameter | 14-5/16" |
| Package Dimensions (WxDxH) | 26-3/4" x 25-3/4" x 21-1/2" |
| Net Weight | 94 lbs |
| Gross Weight | 107 lbs |

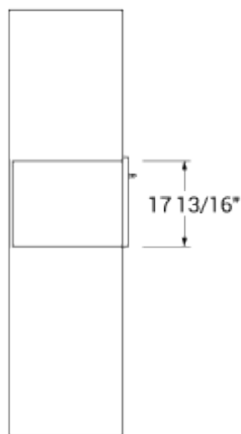
Plug Type:
NEMA 5-20p - 3 Prong



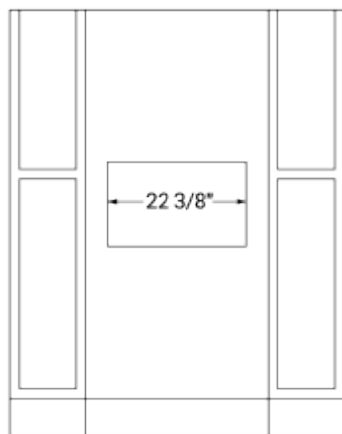
STANDARD INSTALLATION



Top view

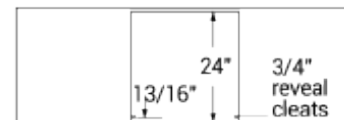


Side view

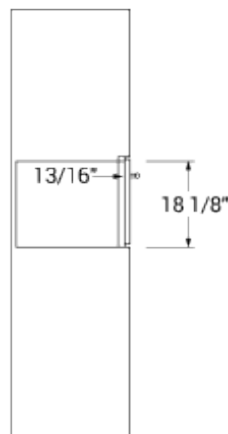


Front view

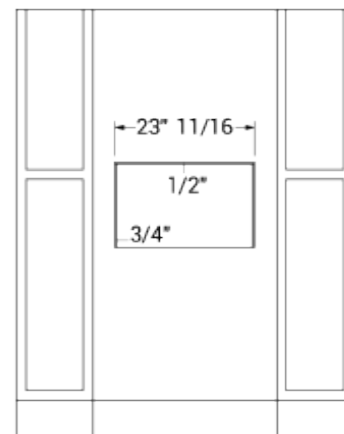
FLUSH INSTALLATION



Top view



Side view



Front view