



**Product:** 30-inch Built-In Air Fry Microwave Oven with Drop-Down Door in Stainless Steel

**Model Number:** TM030H

### TECHNICAL DETAILS

Installation Type	Built-In / Flush Mount
Microwave Interior Light	LED
Door Opening Direction	Drop Down
Color	Stainless Steel or Black
Cavity Capacity	1.6 cu. ft.
Microwave Power	950 W
Convection Element	1700 W
Broil Element	1700 W
Bake Element	600 W
Circuit Breaker	20 A (Dedicated)
Volts	120 V
Frequency	60 Hz
Plug Type	NEMA 5-20p - 3 Prong
Power Cord Length	61"



### FEATURES & BENEFITS

- Sensor Cooking:** Adjusts cooking time and power for perfect results using sensor tech.
- Cooking Modes:** Softens, air fries, broils, and more for seamless cooking transitions.
- True Convection:** Even heat distribution for consistent results on every rack.
- Touch LCD Display:** Intuitive controls with clear navigation and cooking tips.
- Generous Capacity:** Fits large dishes with a 1.6 cu. ft. interior for family meals.
- Control Panel Lock:** Prevents unintended use and simplifies cleaning for safety.
- Sabbath Mode:** Disables sounds/lights when using the oven function, limits to Traditional Bake mode, and allows cooking for up to 74 hours.

### CONTROL PANEL DETAILS/ FEATURES

Sensor Cook	Yes
Defrost	Yes
Child Safety Lock	Yes
Control Lock	Yes
Power Levels	10
10 Cooking Modes	<b>Microwave:</b> Soften/Melt, Defrost, Popcorn, Sensor Cook, Sensor Reheat, Beverage Center <b>Oven:</b> Convection, Broil, Air Fry, Pizza
Audible Signal Elimination	Yes
Sound On/Off	Yes
Memory/Kitchen Timer	Yes
Start/Add-30 Sec	Yes
Timer/Clock	Yes

### ACCESSORIES (INCLUDED)

Turntable
Baking Rack
14" White Ceramic Plate



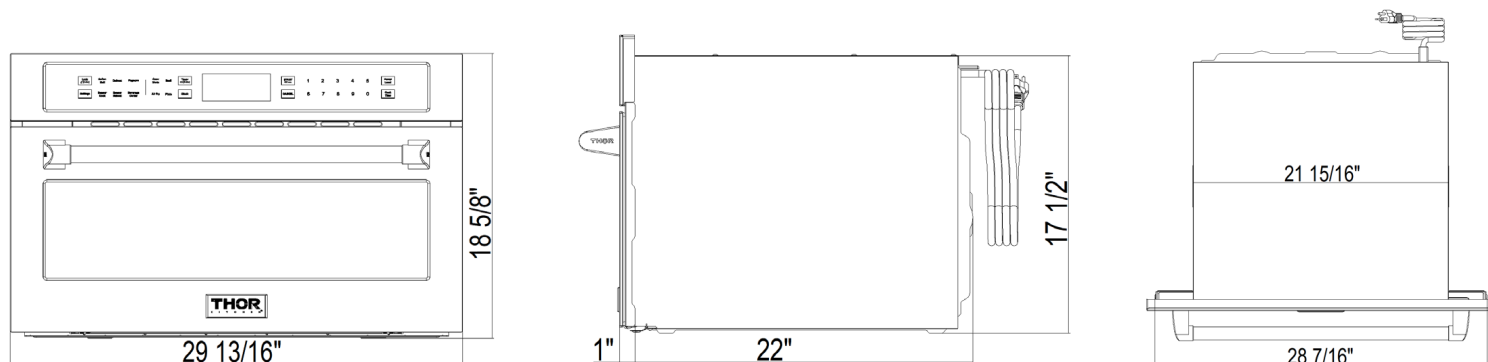
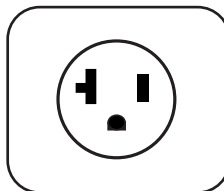
WARRANTY: 2 YEARS PARTS AND LABOR



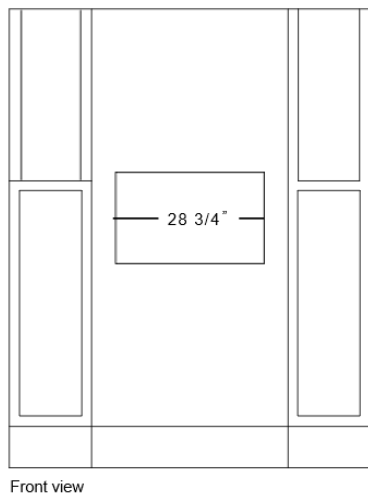
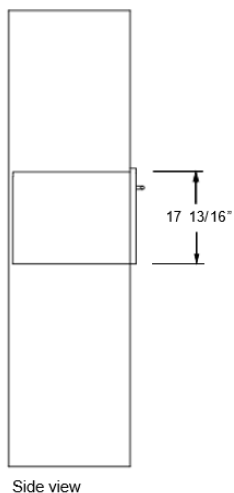
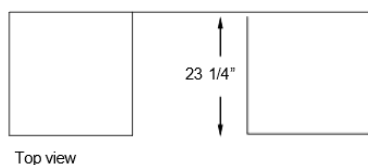
## PRODUCT DIMENSIONS & WEIGHT

Product Dimensions (WxDxH)	29-13/16" x 22" x 18-5/8"
Cavity Dimensions (WxDxH)	16-9/16" x 16-9/16" x 9-13/16"
Cutout Dimensions (WxDxH)	Standard: 28-3/4" x 23-1/4" x 17-13/16" Flush: 30" x 24" x 18-3/4"
Turnable Diameter	14-5/16"
Package Dimensions (WxDxH)	33-11/16" x 26" x 22-1/16"
Net Weight	97 lbs
Gross Weight	113 lbs

**Plug Type:**  
NEMA 5-20p - 3 Prong



## STANDARD INSTALLATION



## FLUSH INSTALLATION

