



SPECIAL EVENT VENUE RENTALS

EAST BEACH - STEWART BEACH - SEAWOLF PARK - DELLANERA RV PARK



GALVESTON ISLAND

Galveston Island offers a variety of clean, green, and pristine canvases to make your special event come to life! Whether you are traveling to Galveston to experience the beautiful beachfront views, immerse yourself in its historical charm, or enjoy the variety of restaurants and activities, the island will surely be your preferred destination! Home to 32 miles of Texas coastline, the Galveston Island Park Board is responsible for maintaining these beach parks as well as the amenities offered to the public.

TABLE OF CONTENTS

Galveston Park Board Venues.....	3
East Beach.....	4
Stewart Beach.....	11
Seawolf Park.....	13
Dellanera RV Park.....	17
Beach Disclosures & Seawall Urban Park.....	20
Additional Park Information.....	21



GALVESTON PARK BOARD VENUES

Your event deserves a memorable setting - With 32 miles of coastline, Galveston has plenty of beachfront property to choose from. Many of our beaches are event ready, some with pavilions and other amenities.

Choosing from these destinations means you're supporting Galveston and contributing to what makes this island such an unforgettable destination on the Gulf of Mexico.

Complete our [Special Event Application](#) online and reserve your dream venue! For questions, call 409.797.5189 or email events@galvestonparkboard.org.



EAST BEACH

VENUE SPACE: PAVILION, ENTERTAINMENT
STAGE, BEACHFRONT, VOLLEYBALL COURT
& MULTI-USE AREA

Galveston Island's largest beachfront famous for its coastal event venues. Stationed on the eastern-most end of the island, it's expansive sands and picturesque views provide the perfect backdrop for any event. This expansive beach template boasts the largest collection of sand volleyball courts on the gulf coast and is suitable for sporting events, weddings, reunions, corporate gatherings, birthdays and more.





PAVILION

The second story pavilion space offers an open-air, 360-degree view of the tranquil East End Nature Preserve and Gulf of Mexico.

QUICK FACTS

- Capacity: 150 people
- Picnic tables (16) seating for 100
- Four high top tables
- Tables and chairs can be reconfigured or relocated for vendor setup
- Bluetooth speaker system
- Electricity
- Indoor restroom access
- Live band accessible
- ADA accessible amenities
- Pavilion rental available during non-operating hours
- Common events: wedding receptions and corporate dinners

PRICING

\$1,500 for 4 hours
additional \$250 / hour





ENTERTAINMENT STAGE

Centrally located to the pavilion amenities, the entertainment stage provides a perfect space to gather under the shade!

QUICK FACTS

- Picnic tables (10) seating for 60
- Umbrellas provided
- Tables and chairs can be reconfigured or relocated for vendor setup
- Electricity
- ADA accessible amenities
- Pavilion access must remain open during operating hours
- Common events: receptions, small concerts, picnics and event registration area

PRICING

\$850 for 4 hours
additional \$150 / hour





BEACHFRONT

Have you ever dreamed of making your wedding or other event come to life with a beautiful beach backdrop? If so, we can make your dreams a reality with our blank sand canvas complete with sun and ocean waves!

QUICK FACTS

- Beachfront is specially designated, cleaned and raked before each event
- Special event signs are posted
- Common events: weddings and group celebrations

PRICING

BEACHFRONT ONE

100 linear ft
Tents prohibited
Great for intimate gatherings

\$500 for 3 hours
additional \$20 / hour

BEACHFRONT TWO

200 linear ft
Tents allowed
Great for large gatherings

\$750 for 4 hours
additional \$40 / hour



VOLLEYBALL COURT

Plan your next tournament at one of the largest sand volleyball complexes in the south!

QUICK FACTS

- Volleyball posts for 30 courts with cranks
- Maximum of two (2) volleyball nets included in rental. Any more than two nets must be provided by event organizer.
- 140 x 100 yards of sand event space
- Open space allows for any type of large event to be hosted in this space
- Includes entertainment stage with picnic tables
- Volleyball court can be fenced off for private event
- Common events: volleyball tournaments, team building, soccer tournaments and small concerts

PRICING

\$1,500 full court / day
additional \$50 / court / day





PARKING LOT

East Beach is Galveston’s largest beach template. If you can dream it, we can provide the space!

QUICK FACTS

- Fully customizable
- East or west parking lot available
- Site visit required to reserve parking lot
- Common events: concerts, auto shows, soccer tournaments and other sporting events

PRICING

1/4 of Parking Lot	1 Day	\$2,000
	2 Days	\$3,500
1/2 of Parking Lot	1 Day	\$3,500
	2 Days	\$7,000

Special soccer field rate of \$100 per court, per day



EAST BEACH BUNDLES

Maximize your East Beach rental and bundle any of the five venue spaces for 10% off!
Our most popular bundles include the beachfront and pavilion, the entertainment stage, and the pavilion, or all three bundled together!



THE INTIMATE BUNDLE

Beachfront One for 3 hours
+
Pavilion for 4 hours

\$1,800

THE REGAL BUNDLE

Entertainment Stage for 4 hours
+
Pavilion for 4 hours

\$2,115

THE GRAND BUNDLE

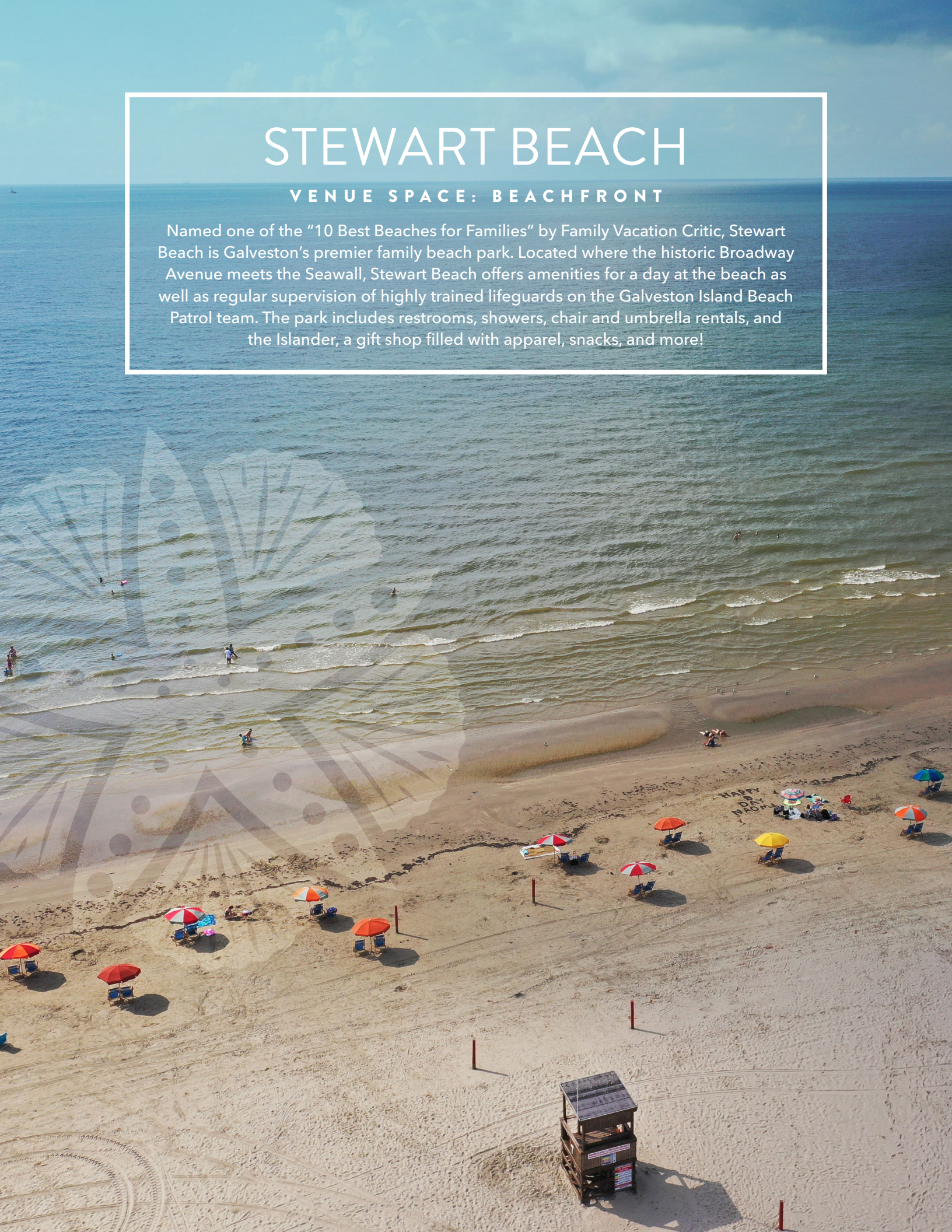
Beachfront Two for 4 hours
+
Pavilion & Entertainment Stage for 4 hours

\$2,600

STEWART BEACH

VENUE SPACE: BEACHFRONT

Named one of the "10 Best Beaches for Families" by Family Vacation Critic, Stewart Beach is Galveston's premier family beach park. Located where the historic Broadway Avenue meets the Seawall, Stewart Beach offers amenities for a day at the beach as well as regular supervision of highly trained lifeguards on the Galveston Island Beach Patrol team. The park includes restrooms, showers, chair and umbrella rentals, and the Islander, a gift shop filled with apparel, snacks, and more!





BEACHFRONT

Have you ever dreamed of making your wedding or other event come to life with a beautiful beach backdrop? If so, we can make your dreams a reality with our blank sand canvas, complete with sun and ocean waves!

QUICK FACTS

- Beachfront is specially designated, cleaned and raked before each event
- Special event signs are posted
- Common events: weddings and group celebrations

PRICING

BEACHFRONT ONE

100 linear ft
Tents prohibited
Great for intimate gatherings

\$500 for 3 hours
additional \$20 / hour

BEACHFRONT TWO

200 linear ft
Tents allowed
Great for large gatherings

\$750 for 4 hours
additional \$40 / hour

SEAWOLF PARK

VENUE SPACE: RAMADA, THE PALM & THE POINT

Located on Pelican Island in Galveston, TX, Seawolf Park is one of the most serene spots in Galveston, and for good reason! Embrace the beauty of this historic site adorned with palm trees that tower in the sky and cruise ships that go sailing by. It's truly one of the best spots for family and friends alike to spend quality time watching the dolphins play and the pelicans fly. Whether you prefer a nicely landscaped event area or a small pier with a rocky backdrop overlooking the Galveston ship channel, Seawolf Park is the perfect location for your special day!





RAMADA

Relax under a ramada immersed in the sights of Seawolf Park. Join your friends and family for a fun-filled picnic or event shaded by these structures.

QUICK FACTS

- Six (6) covered ramadas available
- Ramadas include two (2) picnic tables, additional can be provided upon request
- Circle Ramadas have six (6) picnic tables and a BBQ Pit
- Electricity is not included, quiet generators are allowed
- Common events: family reunions and birthday parties

PRICING

\$130 for 3 hours
additional \$25 / hour





THE PALM

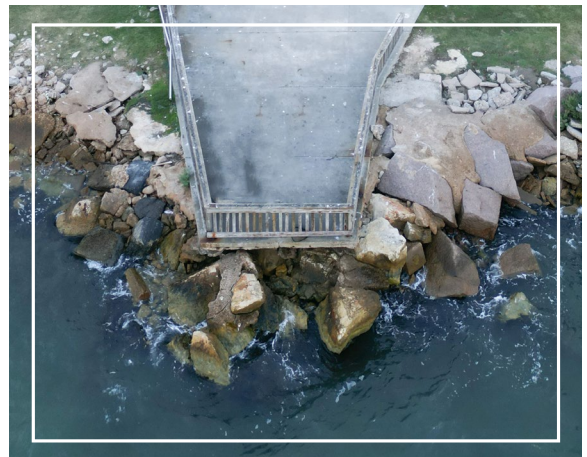
Overlook the Galveston Ship Channel and one of the most popular spots for dolphin sightseeing on our small event pier.

QUICK FACTS

- Private fishing pier
- 50' x 20'
- Space for 30 chairs
- Picnic tables can be provided upon request
- Common events: vow renewals, family gatherings, weddings and birthday parties

PRICING

\$200 for 3 hours
additional \$25 / hour





THE POINT

At the point of the peninsula, you can embrace the surrounding water and bring your event to life.

QUICK FACTS

- 270-degree water views
- Fully customizable
- Sidewalk restricted for private access
- Picnic tables provided upon request
- Steps away from the restrooms and the fishing pier
- Limited electrical, generators permitted
- Common events: weddings, birthday parties, public speaking events and fishing tournaments

PRICING

\$750 / day



DELLANERA RV PARK

VENUE SPACE: BEACHFRONT &
COMMUNITY ROOM

Galveston's premier beachfront camping site. Not only can you book your own piece of the Gulf for you, your family, and your RV, but you can also book your own piece of the park for any celebration!





BEACHFRONT

Have you ever dreamed of making your wedding or other event come to life with a beautiful beach backdrop? If so, we can make your dreams a reality with our blank sand canvas, complete with sun and ocean waves!

QUICK FACTS

- Beachfront is specially designated, cleaned and raked before each event
- Special event signs are posted
- Common events: weddings and group celebrations

PRICING

BEACHFRONT ONE

100 linear ft
Tents prohibited
Great for intimate gatherings

\$500 for 3 hours
additional \$20 / hour

BEACHFRONT TWO

200 linear ft
Tents allowed
Great for large gatherings

\$750 for 4 hours
additional \$40 / hour



COMMUNITY ROOM

Want to bring your party under the shade? With ocean front views and electrical access, this space is the perfect small event venue.

QUICK FACTS

- Water views
- Patio access
- Kitchenette
- Electricity
- TV access
- Bluetooth speaker
- Games
- Common events: birthday parties and team building events

PRICING

\$250 for 3 hours
additional \$50 / hour



BEACH DISCLOSURES

PRIVATE EVENTS

Under the Texas Open Beaches Act, the public has free and unrestricted right to access Texas beaches. The public cannot be dissuaded from accessing any beach and, therefore, the Park Board does not have the ability to guarantee a private, unobstructed beachfront event.

WEATHER PERMITTING

There is currently no access to an indoor facility at East Beach or Stewart Beach. The pavilion is not an enclosed structure, and is therefore subject to the elements of wind, rain, and nature.

Wildlife nesting season, weather conditions, or other naturally occurring coastal environmental events may affect event availability.

LARGE EVENT POLICY

Due to our proximity to protected wildlife, your event may be subject to the Park Board's Large Event Policy.

SEAWALL URBAN PARK

Due to limited staff and amenities, the Park Board does not designate space for special events along the beachfront of the Seawall. Events on this beach are expected to abide by the general park rules.

If the event requires a permit from the Park Board or the City of Galveston, a Special Event Agreement with the Park Board must be obtained, which may require:

- Event layout
- Event waiver
- Event insurance
- Clean-up deposit

For any event wishing to reserve parking space along the Seawall, they must hold an agreement with the City of Galveston and the Park Board.

The sidewalk itself cannot be rented, and access cannot be restricted.



ADDITIONAL PARK INFORMATION

PARKING

- Beach park parking is \$15 per vehicle. Free parking is available at designated locations on the property.
- Seawall parking monitored from 10 a.m. - 6 p.m. To pay by the hour, it is \$4 for your first two hours, and then \$2 each additional hour.
- Seawolf parking is \$10 per vehicle or free for Galveston residents.

PARK RULES

- Pets permitted on leashes
- Clean up after your pets
- Beach camping prohibited
- Stay off the dunes
- Glass of any kind is prohibited on all Galveston beaches
- All amenities are available to the public during operating hours, or available during a private rental
- Alcohol is permitted at East Beach (R.A. Apffel Park), Porretto Beach, and west of 61st St to 16 Mile Road. Alcohol is prohibited in all other areas on Galveston beaches.
- Fires must be contained in a pit and be 100ft from vegetation
- Tents and tarps permitted behind designated emergency line marker
- Drones or radio mechanically operated devices is prohibited; with the exception of The Park Board of Trustees and The City of Galveston
- The Leave No Trace ordinance (N. 19-017 Sec. 8-27) prohibits leaving items such as canopies and miscellaneous beach gear unattended between the hours of sunset and sunrise from Spring Break until Labor Day

COMMON PERMITS

- Temporary Special Event Concessionaire Permit - Distributed by the Galveston Park Board
- Loudspeaker Event Permit - Distributed by the City of Galveston
- Temporary Booth Permit - Distributed by the Galveston Fire Marshall
- Open Burning Permit - Distributed by the Galveston Fire Marshall
- Surf Contest Permit - Distributed by the Galveston Park Board
- Surf Camp Permit - Distributed by the Galveston Park Board

DISCOUNT OPPORTUNITIES

- Galveston non-profit: 50% off facility rental
- Galveston resident: 25% off facility rental

