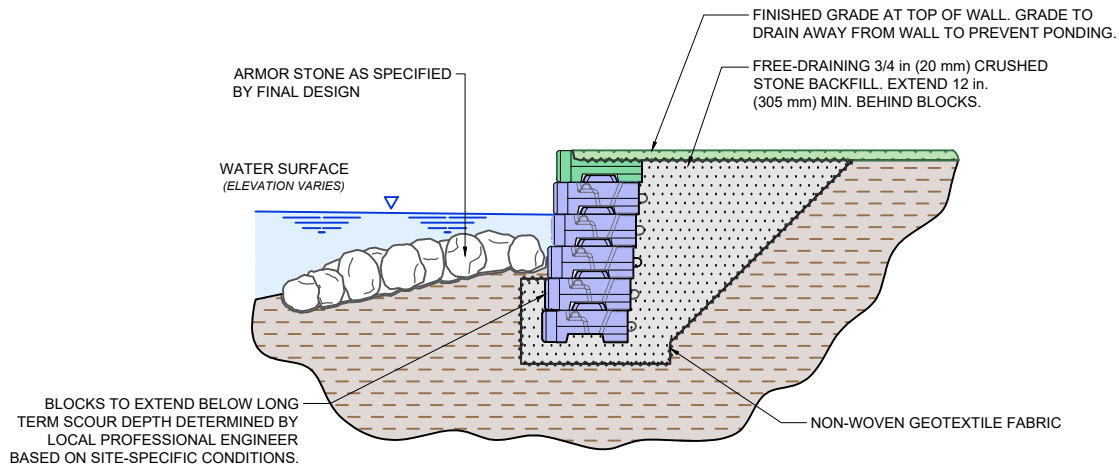
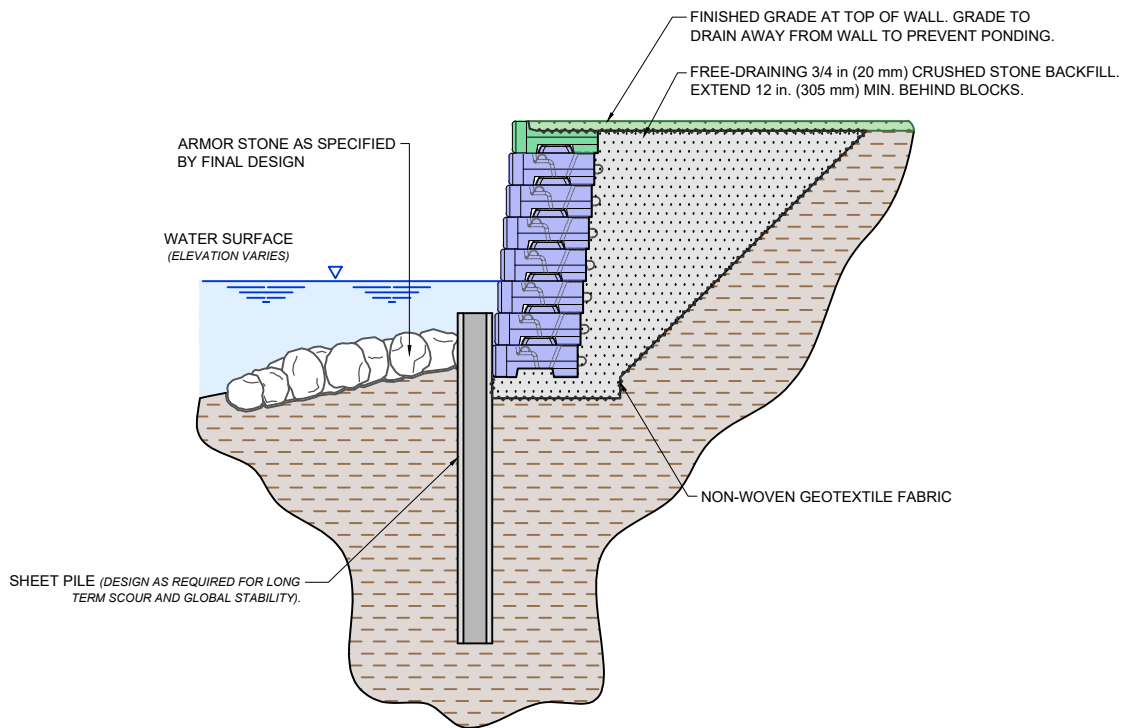


TYPICAL SEAWALL DETAILS

NOT TO SCALE



CONCEPTUAL GRAVITY SEAWALL



CONCEPTUAL SHEETPILE PROTECTED SEAWALL

NOTES:

1. Preliminary wall height charts **DO NOT** apply and should not be used for walls in water applications due to the variety of site-specific variables.
2. Contact a local Professional Engineer to address site specific details, wall drainage, final design, and construction plans.
3. Walls may require geogrid reinforcement for stability.

This drawing is for reference only. Determination of the suitability and/or manner of use of any details contained in this document is the sole responsibility of the design engineer of record. Final project designs, including all construction details, internal and external stability, and drainage, shall be prepared by a licensed professional engineer using the actual conditions of the proposed site.

DRAWN BY:	EGS	TITLE:	TYPICAL SEAWALL DETAILS	NOVUM WALL ® 8212 M-119 Harbor Springs, MI 49740 (866) 222-8400 ext 33010 • engineering@redi-rock.com • www.novumwall.com
APPROVED BY:	LBH			
DATE:	17-DEC-2025			
SHEET:	1 of 1	FILE:	Typical_Seawall_Details_17DEC2025.dwg	