

# INSTALLATION INSTRUCTIONS FOR HARVEY BAY/BOW WINDOWS

## ORDERING

When ordering, provide the actual opening size or the actual buck size needed. The factory will do any breakdown or adjusting of finished window sizes to ensure a perfect fit:

- **If opening size is given**, the factory will manufacture the window such that there is approximately 1" clearance on the width and 1/2" clearance on the height.
- **If the buck size is given**, the window will be manufactured to the exact dimensions plus or minus 1/4".

**Optional:** Insulation package for seatboard R-Value = 7.5

## SUGGESTED TOOLS & SUPPLIES

**Installation:** Hammer, flat pry bar, knife, tape measure, level, 16 penny galvanized common and finish nails, fiberglass insulation, window capping, flashing and roof system, caulking gun and silicone caulking. Reciprocating saw is optional.

**Support:** Plywood and 2x4 braces or support brackets, cable support system.

**Finish:** Fine-toothed saw, electric drill, 1/8" drill bit, galvanized finish nails and/or screws, oil based paint, polyurethane and/or lacquer finish.

## PREPARING THE OPENING

1. Remove the inside casing, interior stops and stool cap. Removing trim with care may permit you to reuse it again if desired.
2. Confirm measurements before removing existing window(s).
3. Remove existing window(s). In most cases, this may be accomplished by prying the exterior casing from the house and pulling the unit(s) from the outside. Cutting the nails around the perimeter of the window using a reciprocating saw will make the removal easier.
4. Check to be sure that the interior finished wall is trimmed back to the rough studs around the entire perimeter of the opening.



## INSTALLATION

5. NOTE: Optional cable support system must be installed at the time of installation. **Under no circumstances should a unit be left hanging without adequate support. (See step 14)**
6. From the outside, tilt the window into the opening, making sure that the nail fin is fitted tightly against the exterior sheathing around the entire perimeter. Center the unit in the opening.
7. Using 16 penny galvanized common nails and shims, lightly secure the unit in the opening by nailing through the vertical jambs.
8. Finish shimming the unit so that it is level; square and plumb in the opening. Then, using galvanized finish nails, nail through the head, seat and jamb at location of shims to secure the window.
9. **Important** - Fill opening between rough studs and window around total perimeter with insulation. Counter sink any exposed nails and fill holes before finishing.

**CAUTION:** In many cases, Bay/Bow windows must support substantial loads (i.e. plants, ceramic tile, children, etc.). Extra care should be given to provide sufficient structural support such as 2 x 4 braces or support brackets when necessary.

## EXTERIOR FINISHING

**IMPORTANT!** The options for finishing the exterior of a Harvey Bay/Bow window are numerous and must be left to the discretion of the installer. However, the basic requirements outlined below must be followed for proper installation.

10. **Majesty Only:** Exterior mullion covers must be capped on the bottom to prevent water and weather damage to the interior of the unit and the seatboard.
11. Flashing should be installed along the window head section to ensure that water will correctly drain to the outside of the window. **NOTE:** Be sure to caulk between the exterior trim & the Bay/Bow.
12. Insulation (not supplied) must be installed above and below the unit. An **absolute minimum** of R=7 must be applied under the entire seatboard. An insulated seatboard package (R=7.5) is available custom made to fit each unit. A weathertight seal over the headboard, filled with insulation is required as well.
13. The optional insulated panel is provided pre-cut to the contour of the bay or bow seatboard.
  - Panels for Vinyl Bay/Bow windows are cut to fit behind the wrap-around vinyl seatboard cap.
  - Panels for Majesty Wood Bay/Bow windows are cut to finish at the outer edge of the seatboard.

### **Attachment of Insulating Panel to Seatboard:**

- Mark desired attachment screw locations on panel and drill 1/8" pilot holes through panel only. It is recommended that screws be located a minimum of one every 20" along each edge of the panel.
- Apply silicone sealant to top of panel (foil side) along entire perimeter.
- Insert 1 5/8" drywall screws through hole in supplied snap covers so that screw heads set in recess.
- Hold panel in place beneath seatboard and secure by driving screws through pilot holes and into bottom of seatboard. Be sure not to over-tighten screws or aluminum cladding may be damaged.
- Snap covers closed to conceal screw heads.
- Remove clear protective film from aluminum cladding.



**HARVEY**  
BUILDING PRODUCTS



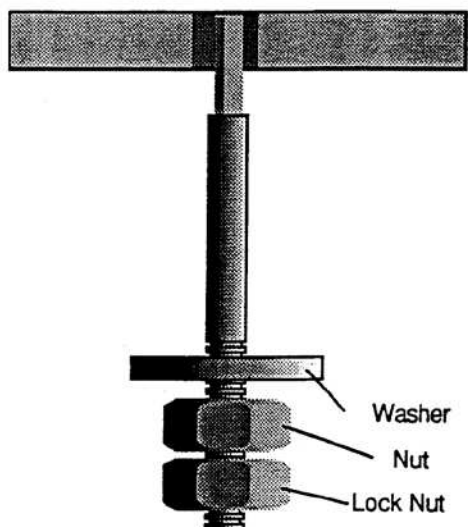
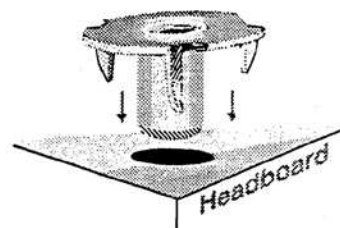
# Cable Support System Installation Instructions

- 14. IMPORTANT:** Cable hanging kits are supplied with the understanding that certain job conditions as well as larger bay/bow windows may require different or additional means of support. Ensuring that all Harvey Bay/Bow Windows are properly supported must be left to the discretion of the installer.

- A. Begin by drilling 1/4" holes through the head and seat boards. The proper hole locations have been stamped onto the head & seat boards (an awl impression will locate the drill bit).

- B. Insert and seat the cable bushing into the holes located in the **head board only** (see diagram).

- C. Thread the swaged end of the cable through the unit from top to bottom. The mullions used in Harvey Bay/Bow units have been designed with a cable channel which eases this step.



- D. Thread one washer and two nuts onto the swaged end as shown in the diagram to the left. Allow enough threads above the washer for adjustment if needed.

- E. Tie a loose overhand knot in the cable above the header to prevent it from falling out and lift the Bay/Bow unit into position. Temporarily support it with the use of scrap lumber.

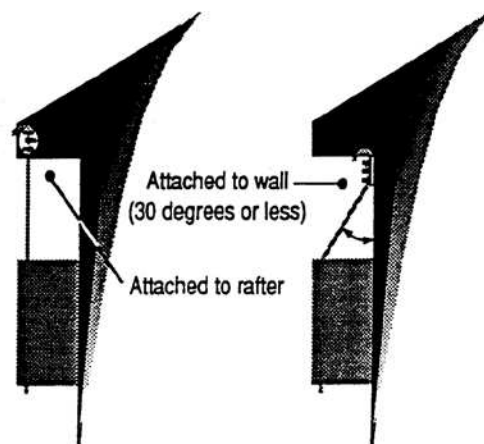
- F. With the unit in place, screw the jamb cleat to a secure surface in as straight a line as possible from the cable exit point (cleat must be secured into a structural framing member of the house). If you choose to wall mount the cleat, care must be taken to insure the cable does not pull outward on the cleat at more than a 30 degree angle (below).

- G. Once the jamb cleat has been secured, thread the cable up through the cleat fingers as shown. Be sure to take up as much slack as possible (you may find that by slightly raising the window unit above its final location, when the temporary supports are removed the unit will drop into the correct position). **Carefully seal around the cable where it passes through the upper bushing with silicone caulk.**



- H. The unit may be precisely aligned by adjusting the two nuts under the sill.

- I. Finish mounting the Bow/Bay window to the wall in accordance with the installation instructions on the previous page. (See step 6)



**HARVEY**  
BUILDING PRODUCTS

## INTERIOR FINISHING

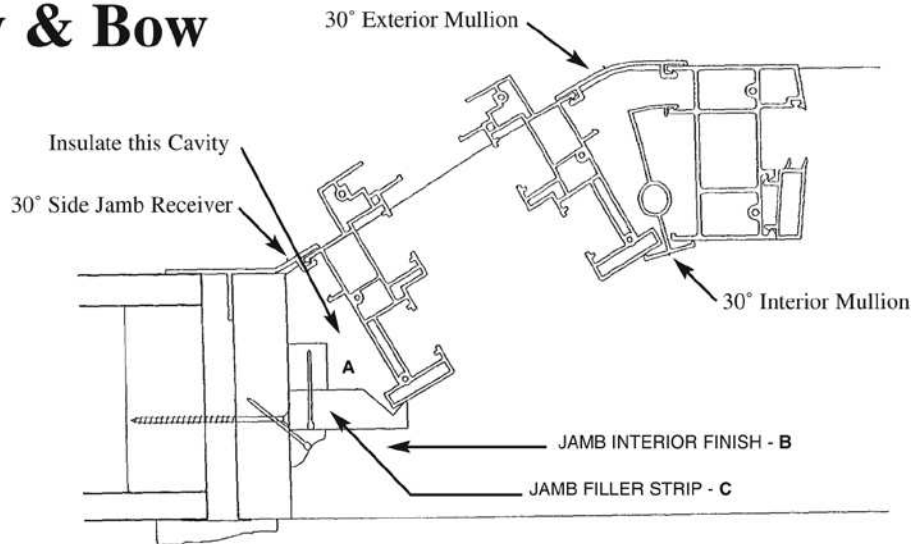
15. Additional insulation must be applied at the gap next to interior jamb figure 1 (location A) and apply solid wood jamb interior finish (location B) by nailing it to the jamb filler strip (location C, see drawing below).
16. **Majesty Only:** Cut interior wood mullion caps to fit and install. (see figure 2)  
**Majesty Only:** Use of head and seatboard finish moulding is necessary to complete bay and bow units. The moulding should be mitered at the jambs and straight cut at the mullions. It should then be glued and nailed in place.
17. **IMPORTANT!** All wood surfaces must be finished and sealed within 48 hours after installation!

### Important Window Maintenance Tips

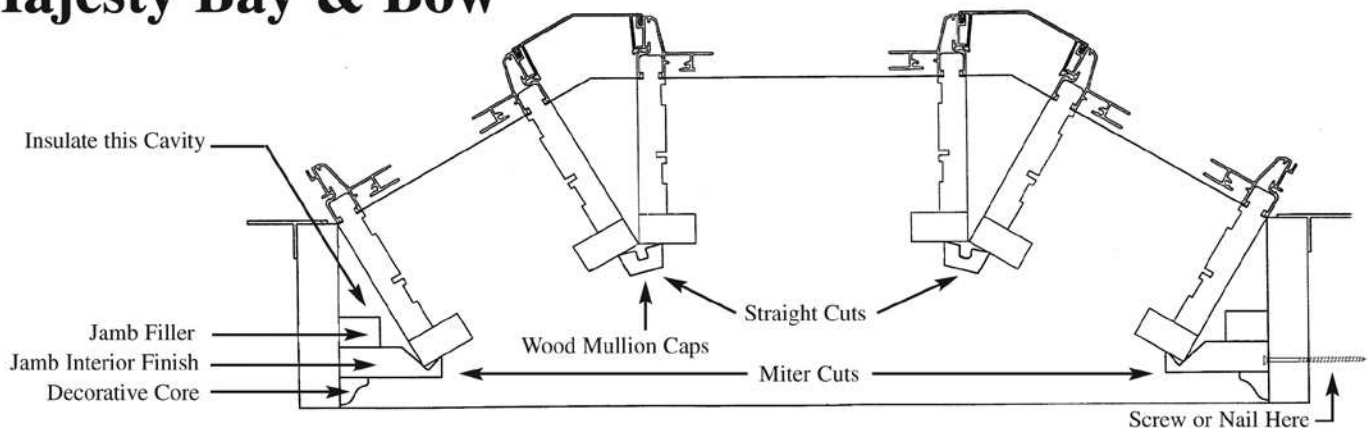
Screens are intended to provide *reasonable* insect control and are not intended to provide security or for the retention of persons or objects from the interior.

It is recommended that the hardware on Harvey casement & awning windows be lubricated twice a year or as needed with a light oil for years of trouble-free operation..

*figure 1.*  
**Vinyl Bay & Bow**



*figure 2.*  
**Majesty Bay & Bow**



**HARVEY**  
BUILDING PRODUCTS