

# IMPORTANT INSTRUCTIONS: READ BEFORE INSTALLING OR REMOVING SASH FROM FRAME

FOR WINDOW INSTALLATION: REFER TO AXIO WINDOW INSTALLATION INSTRUCTIONS

## HANDLE OPERATION GUIDE:

### LIFTING MISHANDLING

⚠️ DEVICE: ⚠️

#### HANDLE IN TURN POSITION:

#### HANDLE IN TILT POSITION:

#### HANDLE IN LOCK POSITION:



TILT & TURN HARDWARE

TURN ONLY HARDWARE

TILT FIRST HARDWARE



TILT & TURN HARDWARE

TILT ONLY HARDWARE



ALL HARDWARE



UNDER NORMAL CIRCUMSTANCES, PUSHING DOWN ON THE LIFTING MISHANDLING DEVICE CONSTITUTES INCORRECT OPERATION, BUT IT IS A NECESSARY OPERATION IN THIS PROCESS.

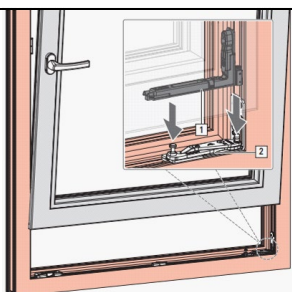
## AXIO SASH INSTALLATION INSTRUCTIONS

**1** Push down on lifting mishandling device and move handle to turn position. With the sash slightly tilted, guide it along the frame in a downwards directions until you feel the pivot rest (1) engage in the corner hinge (2).

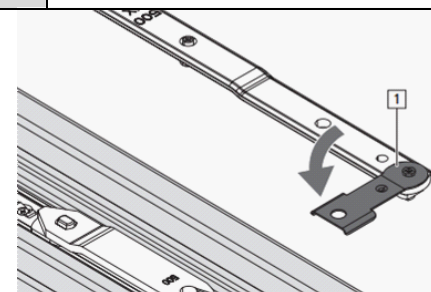
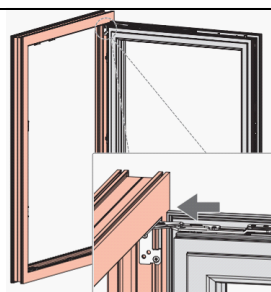
**2** Secure the sash to prevent it from falling.

**3** Turn the sash and stay arm to 90° and push the sash slightly towards the frame at the top. Push down on the lifting mishandling device and move the handle to the tilt position.

**4** Turn the bayonet bolt on the stay arm to 90° using the plate (1), lifting the plate slightly while doing so.



**WARNING!**  
**AN UNSECURED SASH MAY POSE RISK OF SERIOUS INJURY!**  
The sash may fall during installation if it is not securely connected to the frame.  
• Secure the sash to prevent it from falling, e.g. by using two people.

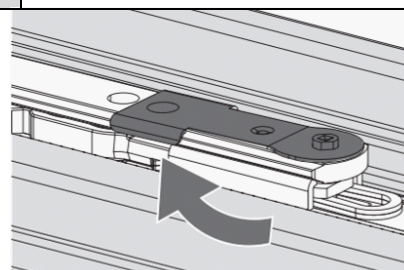
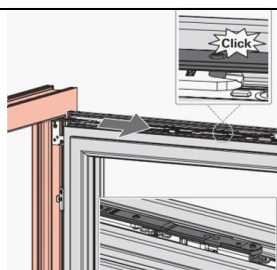
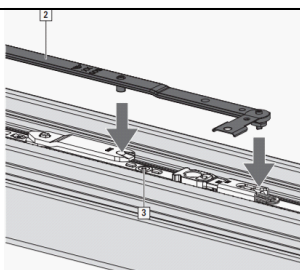


**5** Position the stay arm (2) over the stay guide (3) and push it downwards so that the mounting bolt extends into the supporting arm and the bayonet bolt extends into the mounting plate. Pull the sash away from the frame until you hear the stay arm click into place.

**6** Verify the stay arm is mounted correctly. The mounting bolt must be locked in the stay guide and the stay arm must audibly click into place.

**7** Use the plate to turn the bayonet bolt 90° so that the plate engages on the sash stay rod again.

**8** Push down on the lifting mishandling device and move the handle to the turn position.



## AXIO SASH REMOVAL INSTRUCTIONS

**1** Move the handle to the turn position and open the sash. Push down on the lifting mishandling device and turn the handle to the tilt position.

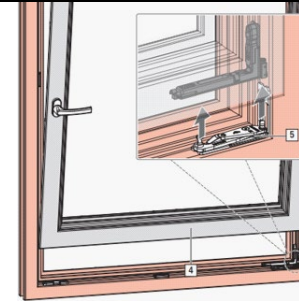
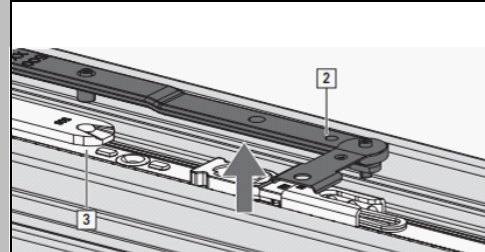
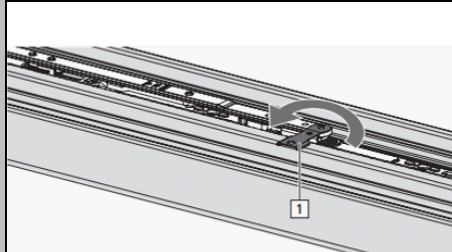
**2** Turn the bayonet plate (1) 90° while lifting it slightly.

**3** Detach the stay arm (2) from the stay guide (3).

**4** Push down on the lifting mishandling device and move the handle to the turn position. Close the sash, while keeping it slightly tilted (4) and lift it out of the pivot rest (5).



**WARNING!**  
**IMPROPER DISMANTLING MAY POSE RISK OF SERIOUS INJURY!**  
The sash may fall during dismantling.  
• Secure the sash to prevent it from falling, e.g. by using two people.  
• Always have dismantling work performed by a professional.



## AXIO SASH REMOVAL INSTRUCTIONS (WITH LOAD TRANSFER DEVICE)

**1** Move the handle to the turn position and open the sash. Relieve the load on the load transfer device until the support rod lies loosely in the frame component. To do so, unscrew the load transfer adjusting screw (3) until the spring is fully released (the support rod becomes loose).

**2** Remove the support rod from the recess in the frame component and follow steps 1-4 Axio Sash Removal Instructions.

**3**

**4**

