

Series 2050 Garden Window
**Important Information for
Retrofit Installations**

Attention Installer!

We urge you to read and follow the attached installation instructions.

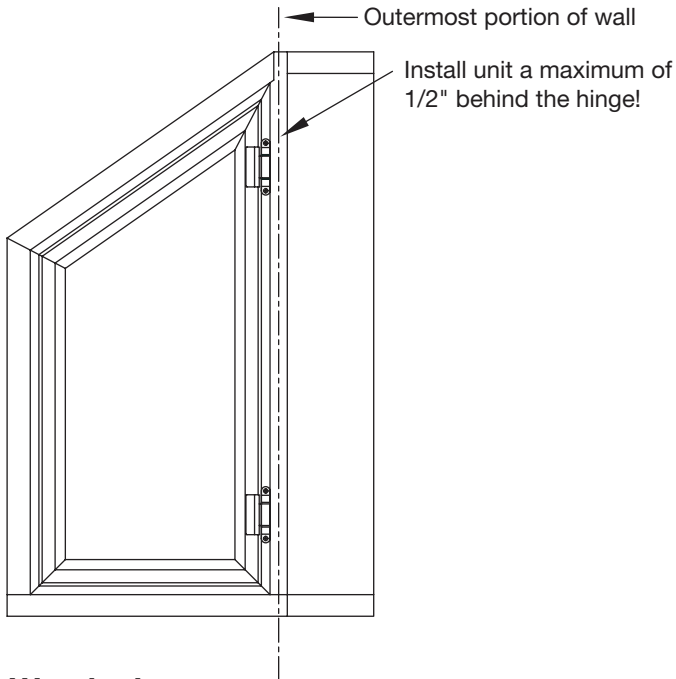
Failure to do so may void the warranty of this garden window unit.

Attention Homeowner!

1. All interior wood components must be properly sealed with polyurethane. **Do not use water-based compounds.**
2. If unit includes optional glass shelf, **do not exceed weight limit of 8 pounds per square foot on the shelf!**
3. Follow installation instructions for optional components.
4. **Do not overload the unit!**

Series 2050 Garden Window

Important Installation Information for Retrofit Installations



Warning!

Under no circumstances should the distance from the back of the hinge to the exterior wall, J-channel, trim face or masonry face exceed 1/2".

This is the area where the wood meets the vinyl frame. **LEAKAGE COULD OCCUR.**

If there has been an error in measuring, we highly recommend cutting the inside of the jambs, head and seat board to accommodate this dimension rather than "cheating" the window out to be flush with the interior wall surface.

Cutting Interior Jamb, Head and Seat Board

1. Use new plywood blade with circular saw.
2. Mark cut lines on exterior of 1-1/4" plywood.
Use a straight edge for saw guide to avoid "freehand cutting."
3. Use masking tape on inside of cut area to reduce splintering and chipping of the inside laminate.

Installation of Optional Components

Vinyl Trim and Insulation Board

We recommend the attachment of the vinyl trim and insulation board after the garden window has been installed.

1. The projection of the garden window is a standard projection size of 17". The insulation board is cut to 18-3/8". Sill length and other factors could affect proper sizing. Be sure to take this measurement into account before cutting the board and vinyl trim to size.
2. Install vinyl trim onto the insulation board with the vinyl face of the board facing the exterior.
3. Put a bead of caulk around the perimeter of the vinyl flange face which will mate against the bottom of the seat board face.
4. Install weather-resistant screws up through the vinyl trim, insulation board and into the bottom of the seat board.

Warning! Screws should not exceed 1-1/2" long! Do not overtighten!

5. Position screws near four corners. (On larger units, additional screws should be used between the corners.)
6. Caulk gap between seat board trim and insulation board trim. Caulk along insulation board where it meets sill area of window.

Shelving Standards and Brackets

Units up to 42" wide have two standards; units 42" up to 49" wide have three standards; units 49" up to 72" wide have four standards in the kit.

1. On units with two standards, place each standard (vertical track) 1/8" in from the inside corner of the vinyl frame with the bottom edge of the standard setting on the step of the vinyl frame.

Larger units require additional standards, spaced equally between the end standards, **attached top and bottom only!** Place each standard with the notched portion down, setting on the step of the vinyl frame.

On all units, there are four black rubber blocks (2 on both sides) placed in both corners of the inside of the unit. Use these to ensure the 1/8" dimension for the vertical track location. Remove the rubber blocks with pliers once the vertical tracks have been fastened.

2. Mark hole locations with a pencil.
3. Drill pilot holes through the first wall only.
4. Position vertical standard and attach using 1-1/2" screws. **Do not overtighten screws!**

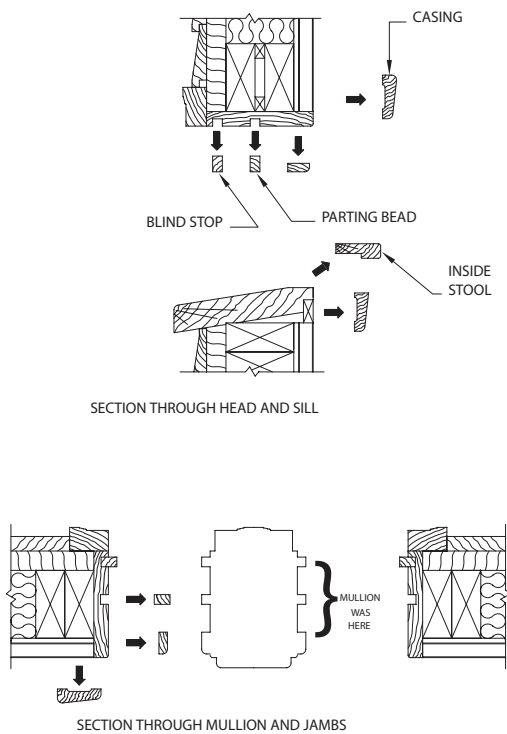
Series 2050 Garden Window
Typical Installation Details: Retrofit

Installer Warning!

All units that exceed 72" wide or 60" high require knee brace support, because the unit exceeds standard size limitations for width or height.

Removal of Old Prime Window Frame

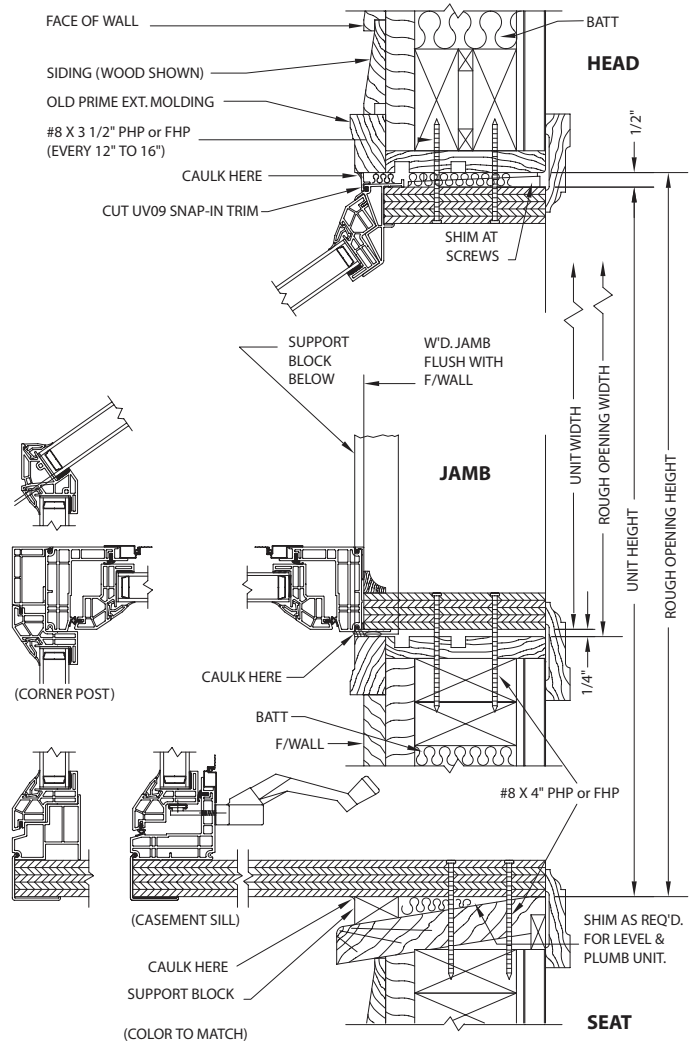
1. Remove inside trims, parting beads, and blind stops from the head.
2. Remove the inside stool and trim from the prime window sill.
3. Lightly fill batt insulation into the rough opening's open cavities.



4. Remove parting beads and trim from the jambs.
5. Remove the center mullion.

IMPORTANT! Since the mullion may be load-bearing, a lintel may have to be constructed or installed at top to prevent the wall above the opening from sagging.

Frame Construction with Siding

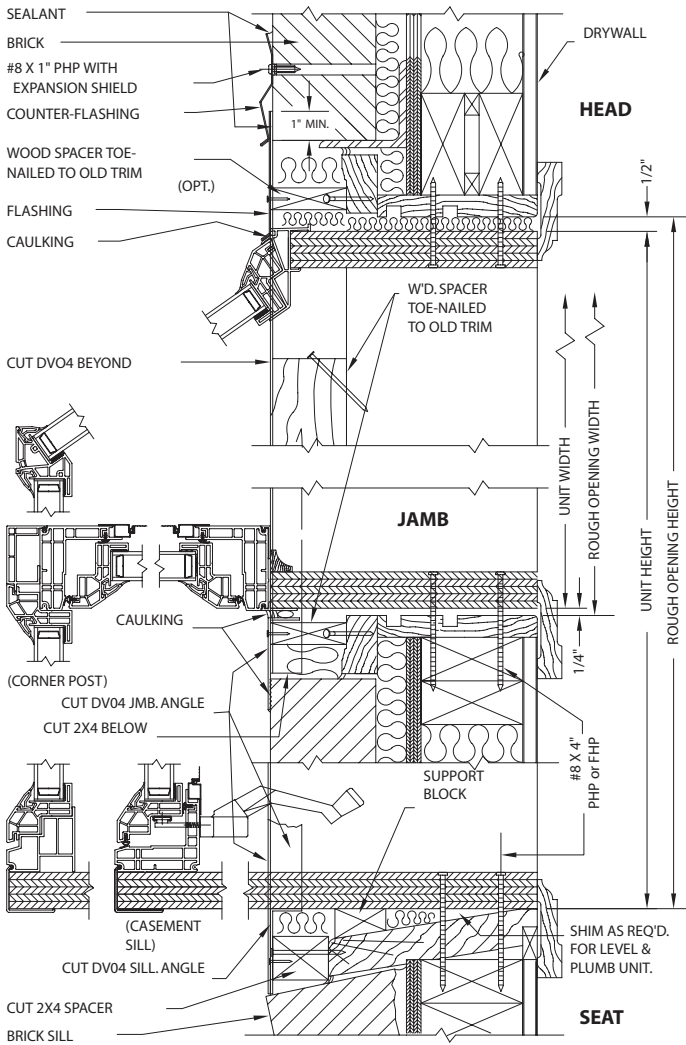


Series 2050 Garden Window
Typical Installation Details: Retrofit

Installer Warning!

All units that exceed 72" wide or 60" high require knee brace support, because the unit exceeds standard size limitations for width or height.

Frame Construction with Brick Veneer



All-Masonry Construction

