

Surface Roughness/Contour Analysis Software FORMTRACEPAK

Form Measurement

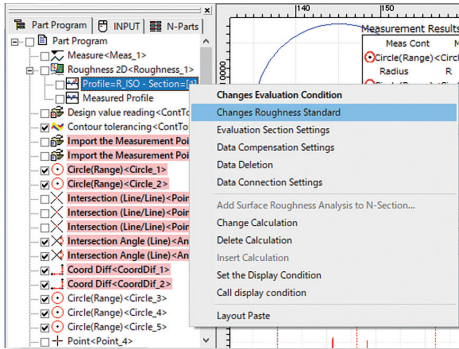


FORMTRACEPAK

FORMTRACEPAK functions offer total support for measurement system control, surface roughness analysis, contour analysis, contour tolerancing, and inspection report creation.

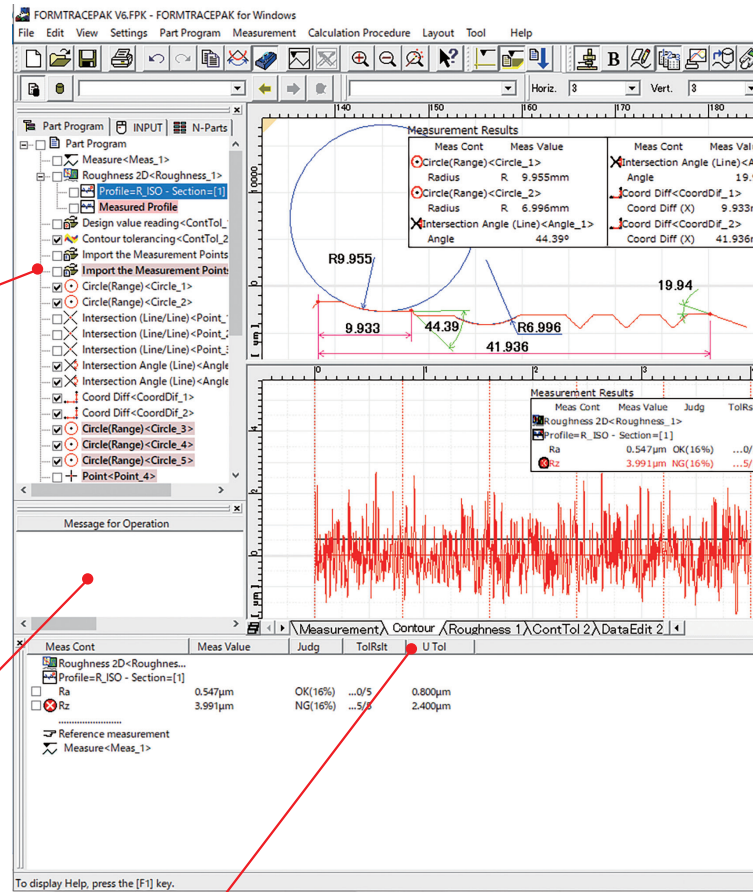
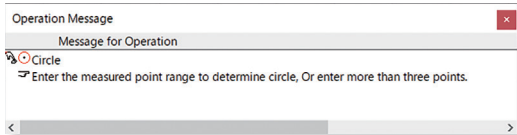
Editing measurement procedures

The items displayed in the measurement procedure window can be directly modified. You can, for example, perform new analyses by modifying the evaluation setup or roughness standard.

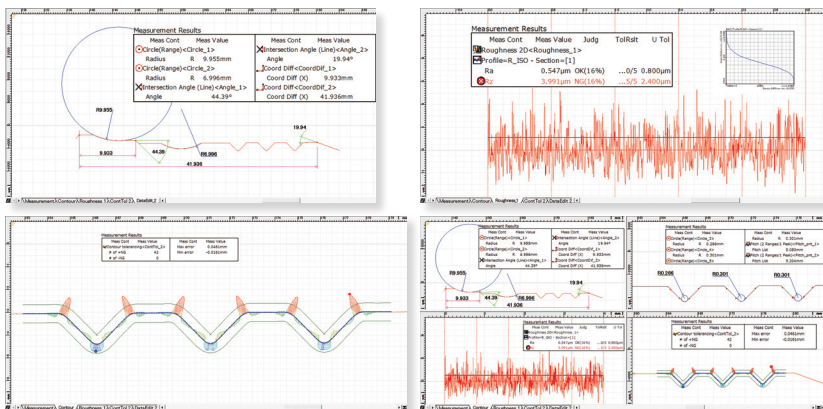


Operation messaging

The operation message window for explaining the next step is incorporated.



Versatile graphics windowing for data and analysis



● Tab-selection graphics window

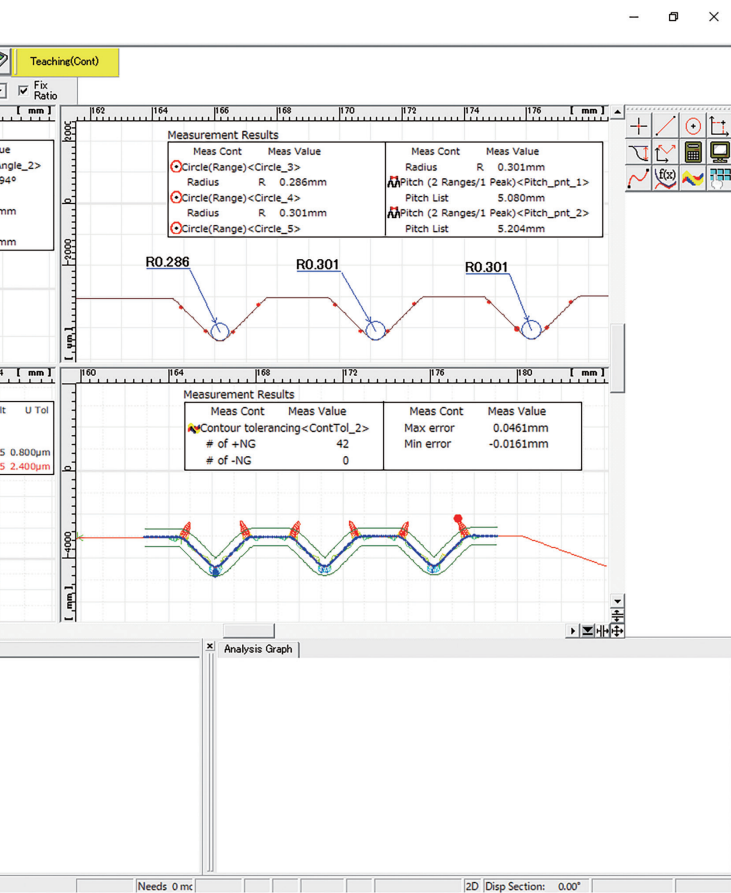
Just select a tab to display the measurement data required, such as contour, roughness, or tolerancing results.

● Dividing the screen into two or four windows

The screen can be divided into two or four windows for the convenient display of measurement data (for contour and roughness), analysis results, and contour tolerancing data, as required.

● Displaying the results in the graphics window

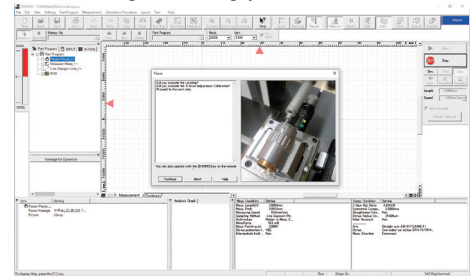
You can paste the graphics obtained from measurements, as well as measurement values (including pass/fail results) and an analysis graph, into the graphics window. This enables you to check the graphics and measurement results at a glance using the graphics window alone.



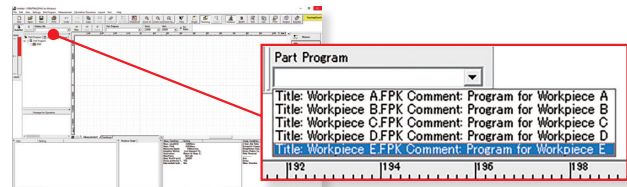
Measurement control

To make only a single measurement, you can create a part program in the single mode. To measure multiple workpieces of an identical shape, you can use the teaching mode.

Since you can embed the entire flow, from making measurement to printing a report, into a part program, you can efficiently make measurements, analyze data, and output a report. A function is also provided that enables you to insert comments accompanied with photographs at desired timings, enabling you to embed the roles described in a measurement procedure document that specifies important points such as work settings.

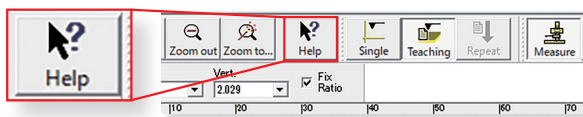


To make immediate measurements, you can use the pull-down menu to easily select and call up the desired operating procedure.



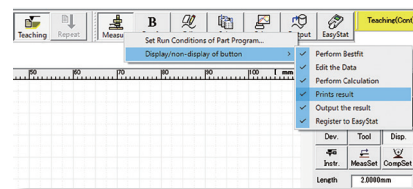
Help functions*

A help function is now incorporated. In addition to index and keyword searches, a status-saving help button, which displays menus and Windows help with a click of the mouse, is provided.



Button-editing function

You can hide buttons that are not used often. For example, you can choose to display only those buttons that are used frequently and increase the size of the displayed graphics window, thereby customizing the window to suit your needs.



Multiple language support

You can switch the language* to be used in the measurement, analysis, and layout windows. After measurements have been made, you can switch to another language and create a report in that language. This function can be used worldwide.

*Refer to Page 10 for supported languages.

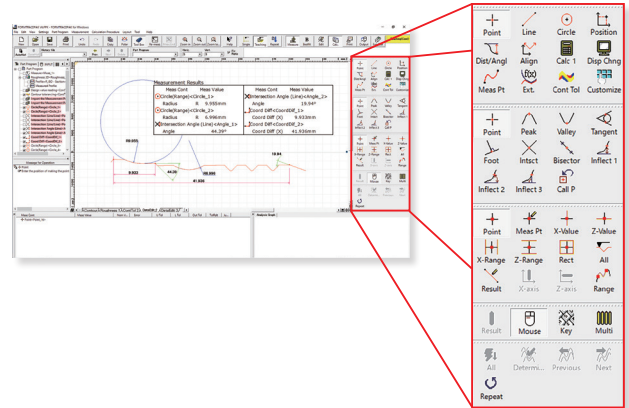
Simple statistical commands

You can perform statistical calculations of roughness parameters and contour analysis results without using a separate program such as Excel.

Contour Analysis

● Contour analysis function

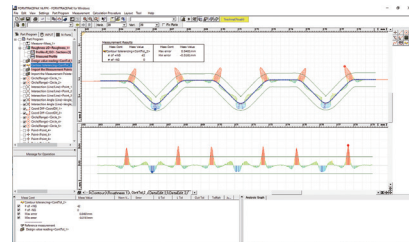
A wide variety of commands, which form the basic elements for analysis, are provided, including those for points (10 kinds), lines (6 kinds), and circles (6 kinds). A rich set of commands that combine these elements to calculate angles, pitches, and distances, a contour tolerancing function, and a design value generation function are also provided as standard features. These functions, combined with the function that allows you to customize the calculation command buttons by hiding less frequently used commands, let you tailor the window according to the user environment.



● Contour-tolerancing function as a standard feature

Patent registered in Japan

The best-fit processing function that moves the coordinate values of the design data and measurement data to the optimum positions is provided as a standard feature. Since the tolerancing results can be visually displayed as graphics, tolerance values and tolerance expansions in each coordinate, or output as a text file, they can be utilized as feedback data for machining systems.



Example of contour-tolerancing result

Item	X	Y	Z	Max	Min	Dev	Max	Min	Dev
1	10.000	10.000	10.000	10.000	10.000	10.000	10.000	10.000	10.000
2	10.000	10.000	10.000	10.000	10.000	10.000	10.000	10.000	10.000
3	10.000	10.000	10.000	10.000	10.000	10.000	10.000	10.000	10.000
4	10.000	10.000	10.000	10.000	10.000	10.000	10.000	10.000	10.000
5	10.000	10.000	10.000	10.000	10.000	10.000	10.000	10.000	10.000
6	10.000	10.000	10.000	10.000	10.000	10.000	10.000	10.000	10.000
7	10.000	10.000	10.000	10.000	10.000	10.000	10.000	10.000	10.000
8	10.000	10.000	10.000	10.000	10.000	10.000	10.000	10.000	10.000
9	10.000	10.000	10.000	10.000	10.000	10.000	10.000	10.000	10.000
10	10.000	10.000	10.000	10.000	10.000	10.000	10.000	10.000	10.000

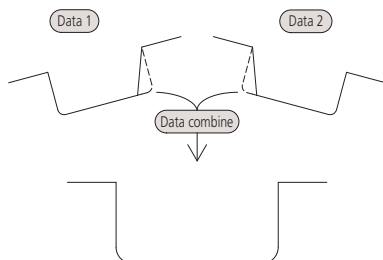
Example of outputting contour-tolerancing results as numeric values

● Design value generation function

You can generate design data from CAD data (DXF or IGES file) or text data. Furthermore, since you can also convert measurement data into design data, you can save parts data prior to use (testing) as design data and effectively utilize it for checking the wear following use (testing).

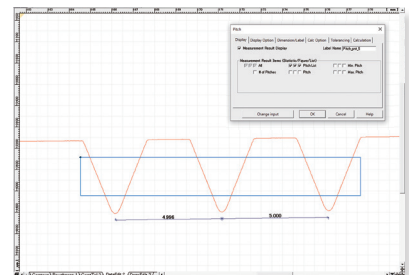
● Data combination function

You can combine partial data collected separately from a workpiece because of its external shape into a single graphic and analyze it.



● Simple pitch calculation function

You can efficiently analyze the pitch between identical shapes, such as a screw pitch and the distance between circles (center-to-center pitch), by simply specifying the desired range using mouse operations.

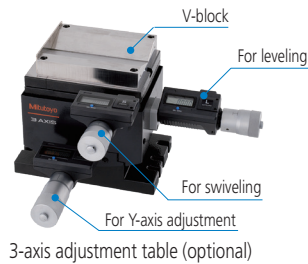


Example of range specification for screw thread pitches with rectangular tool.

Measurement-assisting function (for peak identification, alignment, and leveling)

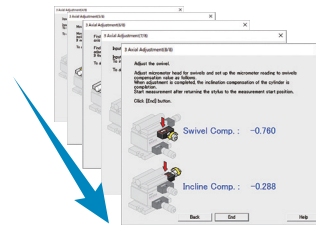
*Same functions as those used for surface roughness analysis

In order to accurately measure a cylindrical workpiece, it is necessary to set the workpiece axis parallel to the traverse direction (to achieve alignment) and to make leveling adjustments at the same time. FORMTRACEPAK enables you to easily perform alignment and



leveling operations by simply following its guidance. Using optional accessories, you can also perform these operations automatically.

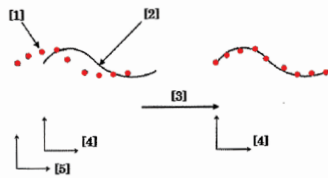
*For details on the models supported by the optional table, please contact us.



Guidance display when using 3-axis adjustment table

Best-fit processing function for measurement point strings

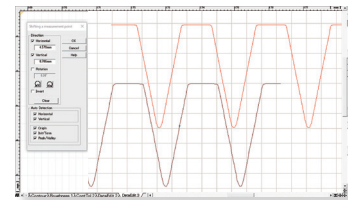
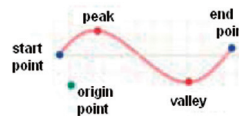
This function tries to fit the measurement points to the pre-registered reference data on the same coordinate system. It can eliminate the effects of a shift that may occur when setting the workpiece during automatic analysis.



[1]Measured Points[2]Bestfit Reference Data[3]Bestfit[4]Reference Coordinate System[5]Measurement Coordinate System

Data superimposition command

You can superimpose two sets of data by detecting their characteristic points. Use the mouse to drag and move the measurement point strings to the desired positions to be superimposed.



Circle and line automatic determination function

Patent registered in Japan

Using the circle/line auto-fitting command, you can automatically calculate all circles and lines contained in the data without having to click the command button each time.

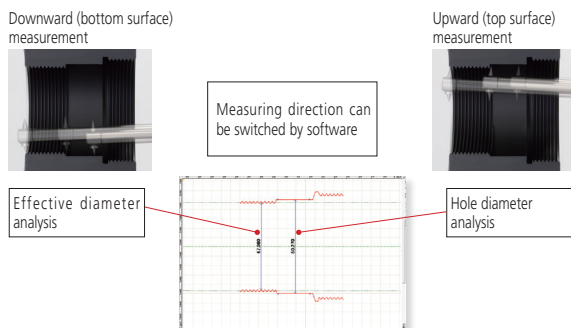
Text output of the calculation result and graphics data

You can output the calculation result as text (in csv or txt format), output graphics data obtained from measurements as point-string data to a text file or CAD file (in the DXF or IGES format), or copy the data to the clipboard.

Top/bottom surface auto-measurement function*

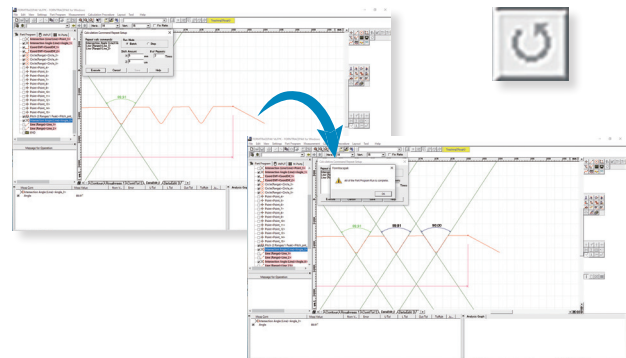
A double-point stylus allows measurement of top and bottom surfaces at one setting. Thread pitch diameter, which up until now has been difficult to measure, can be analyzed easily by using this auto-measurement function.

*This function is limited for FTA-C4000 and FTA-D4000 and SV-C4500CNC series.



Calculation command repetition setting

When identical shapes have the same pitch, you can analyze all of the shapes in a batch by specifying a single analysis location and the pitch.

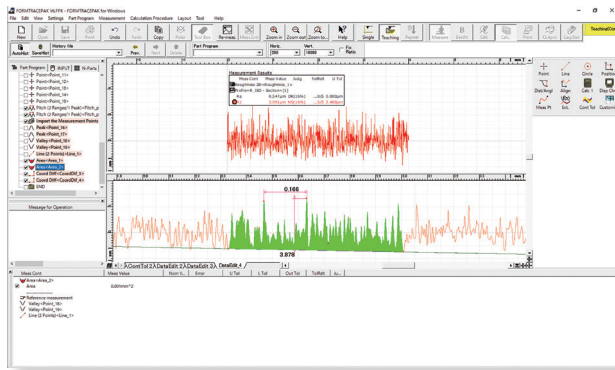


FORMTRACEPAK

Surface Roughness Analysis

● Surface Roughness analysis function

FORMTRACEPAK can perform surface roughness analyses that conform to various standards such as ISO, JIS ANSI, and VDA. For comparing the measurement values with the tolerance limits, you can use the 16% rule or the maximum value rule. Furthermore, since FORMTRACEPAK comes with parameter calculation functions as well as a rich set of graphic analysis functions, it can be widely utilized for everything from routine quality control to R&D applications. It also includes many other functions, such as the function for eliminating (compensating) shapes, such as slopes and R-surface, and a data deletion function.



● Simple input using drawing symbols*

You can easily set up cumbersome measurement conditions by simply entering data according to the drawing symbols of the ISO/JIS roughness standard.

* Excluding ISO21920

Parameter	Lower	Upper	Method
<input checked="" type="checkbox"/> Ra (16%)	<input type="checkbox"/> 0.000	<input checked="" type="checkbox"/> 0.000	Upper Limit
<input type="checkbox"/> Rmax	<input type="checkbox"/> 0.000	<input checked="" type="checkbox"/> 0.000	Upper Limit
<input type="checkbox"/> Rz (16%)	<input type="checkbox"/> 0.000	<input checked="" type="checkbox"/> 0.000	Upper Limit
<input type="checkbox"/> Rqmax	<input type="checkbox"/> 0.000	<input checked="" type="checkbox"/> 0.000	Upper Limit
<input type="checkbox"/> Rsk (16%)	<input type="checkbox"/> 0.000	<input checked="" type="checkbox"/> 0.000	Upper Limit
<input type="checkbox"/> Rku (16%)	<input type="checkbox"/> 0.000	<input checked="" type="checkbox"/> 0.000	Upper Limit
<input type="checkbox"/> Rkumax	<input type="checkbox"/> 0.000	<input checked="" type="checkbox"/> 0.000	Upper Limit
<input type="checkbox"/> Rp (16%)	<input type="checkbox"/> 0.000	<input checked="" type="checkbox"/> 0.000	Upper Limit
<input type="checkbox"/> Rpmax	<input type="checkbox"/> 0.000	<input checked="" type="checkbox"/> 0.000	Upper Limit
<input type="checkbox"/> Rv (16%)	<input type="checkbox"/> 0.000	<input checked="" type="checkbox"/> 0.000	Upper Limit
<input type="checkbox"/> Rvmax	<input type="checkbox"/> n.nnnn	<input checked="" type="checkbox"/> n.nnnn	16mmar 1mmP

Drawing Legend: JIS2001, R_01

Upper/Lower: Upper Lim

Filter: Gaussian

λs: 0.008, λc: 2.5

Parameter: Ra, Tolerance Rule: 16% Rule, Tolerance um: 0.0

Example of drawing symbol
Grinding

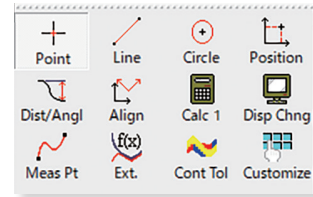
$Ra\ 1.5$
 $\perp - 2.5/Rz_{max}\ 6.7$

Example of entering data

U"X"0.08—0.8/Rz8max 3.3

● Microscopic contour analysis function

This function can calculate steps and surface areas from the roughness data. Furthermore, as with the contour analysis function, a rich set of calculation commands that combine various elements, such as points, lines, and circles to calculate angles, pitches, and distances are provided as standard features.



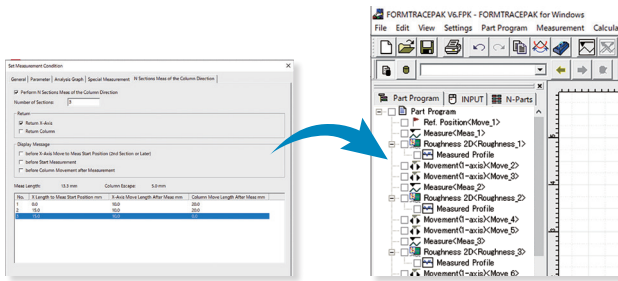
● Support for ISO21920 parameters

Selecting ISO21920 in the roughness standard setting window allows new parameters* defined with the standard to be calculable.

* For calculable parameters, check the FORMTRACEPAK surface roughness analysis specifications.

● **Multiple-point measurement function**

You can easily create a part program that measures multiple points by simply entering a shift.

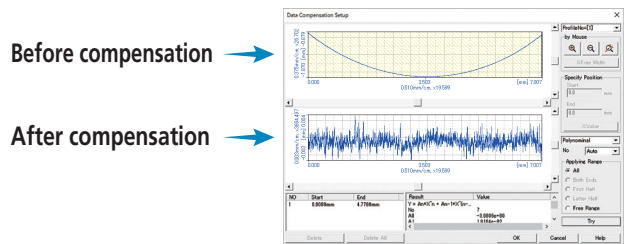


● **Analysis function using multiple-point measurements**

For a workpiece that cannot be measured over the evaluation distance specified by a standard, you can calculate the roughness parameter from the data obtained by measuring multiple points and compare the measurement data with the tolerance limits using the 16% rule, for example.

● **Analysis condition modification with a preview function**

You can easily modify various types of analysis conditions such as the standard to be used, profile type, and filter. Furthermore, before eliminating (compensating) shapes such as slopes, R-surfaces, and parabolas, the preview function allows you to check the impact on the spot.



● **R-surface automatic measurement function**

Based on the preliminary measurement results, you can automatically measure an R-surface by allocating measurement distances using the peak or bottom of the R-surface as the reference.



FORMTRACEPAK

Layout program

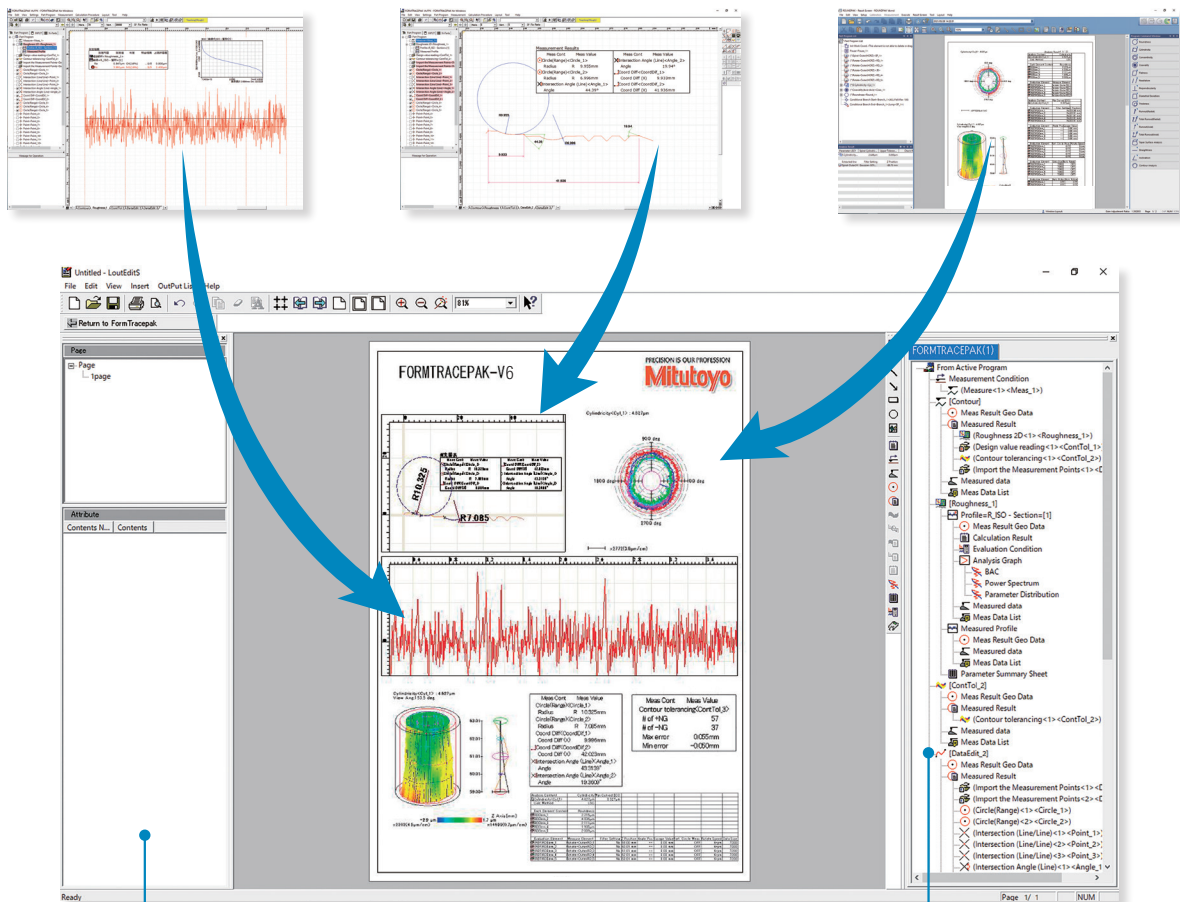
Integrating Contour, Surface Roughness, and Roundness Measurement Results into a Single Page!

Integrated layout

You can use simple operations to lay out graphics obtained from measurements as well as measurement results for surface roughness, contour, and roundness on a single page.

Furthermore, since the program now allows you to specify a saved file and paste it, you can easily paste results from multiple files.

*Note that the optional ROUNDPAK roundness/cylindricity analysis program is required. (Ver. 7 or higher)



● Element information bar

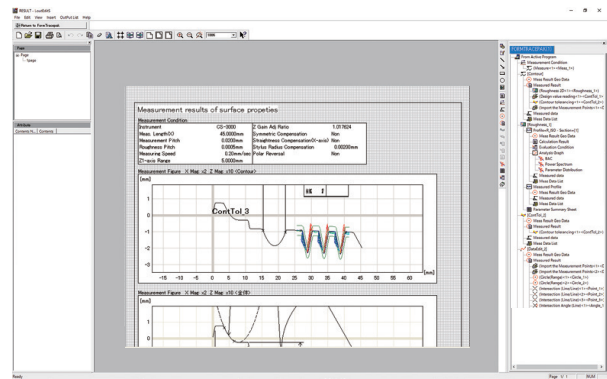
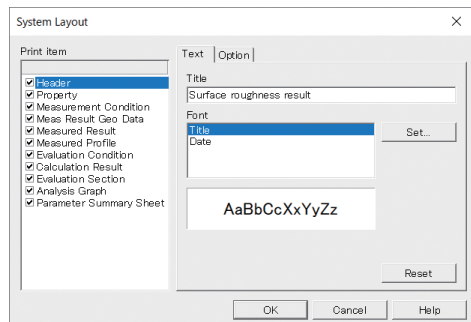
This bar displays the attribute values of the pasted items, allowing you to easily check the contents of the pasted measurement data files.

● Element insertion bar

Using the mouse to drag and drop the analysis content displayed in the element insertion bar, you can paste it onto the layout. From the contour analysis result, you can also select the analysis result for a circle or line alone and paste it in position.

● System layout printing

By simply selecting the items to be output, you can automatically lay out the page to be printed. Use this feature when you wish to simplify the printing task.



● Report creation function

You can freely assemble measurement results/conditions/graphics as well as comments/circles/lines/arrows, and print them out in a measurement result report. Furthermore, since you can paste bitmap files, you can also add a workpiece image or company logo to the layout. You can also save the created layout and use it again later for similar measurements.

● PDF file output

Measurement result report can be output as a PDF format file.

● Saving the result as a web page

Since you can save the result in html or mhtml format, which can be displayed using Internet Explorer or Microsoft Word, you can check the result even on a PC in which no layout-editing program is installed.

Specifications

FORMTRACEPAK Contour measurement/analysis specifications

Operation processing	Points	Points, peak points, bottom points, contact points, foot of the perpendicular, intersection points, median points, inflection points (distance), inflection points (angle), inflection points (angle change), point recall
	Lines	Lines, contact lines, perpendicular lines, parallel lines, median lines, lines (points, angles), line recall
	Circles	Circles, circles (center - radius), circles (two-point), tangent circles, tangent circles (measurement points), circles (radius/center fixed), circle recall, ellipses (*calculated with conic profile commands)
	Coordinates	Coordinate difference (X-axis coordinate difference, Z-axis coordinate difference, angle difference, radial vector difference), position judgment
	Distance/angle	Distances, steps (average, maximum, minimum), groove dimensions, pitch (pitch, [center-to-center] pitch), angles, route
	Calculated coordinates	Coordinate system origin setting, coordinate system rotation
	Operation aggregation	Operations (addition, subtraction, multiplication, division, absolute value, square root), statistics (average value, maximum value, minimum value, standard deviation, deviated standard deviation, sum total), data registration, data clear
	Measurement point editing	Deletion, parallel movement, rotation, flip, position alignment, division, offset, idealization, fairing, filtering, scaling of measurement points (polar coordinate expansion), union
	Expanded functions	Area, conic profile (ellipse, hyperbola, parabola), circle/line automatic determination commands (automatic calculation of multiple circle/line elements within a designated range)
Contour tolerancing	Contour tolerancing, best-fit processing, design value generation, design value reading, arbitrary position results bubble display	
Other functions	Tolerancing, dimension display, simplified display	
Calculation support function	Automatic display of calculation command help	
Measurement-assisting functions (common to contour and roughness)	Peak/bottom detection (manual), ball measurement, workpiece identification function, leveling, perpendicular leveling, alignment, automatic measurement function for rounded surfaces (only during roughness measurement)	
CNC measurement function	Measurement part program, multiple parts	
Statistical processing	Simplified statistical function	
Data file input/output	Output: Text, design values Input: Text, design values (for IGES or DXF, read in design value generation utility), data import from SJ series	
Coordinate control	Origin setting, coordinate system rotation, coordinate system setting through workpiece identification, axis zero-setting, resetting	
Stylus calibration	Automatic calibration with batch calibration kit, reference hemisphere, manual calibration with pin gauge Calibration log stored in stylus, no upper limit on data quantity	
Straightness compensation function	Equipped with straightness compensation function	
Measurement pitch	0.1~2000 μm (depends on measuring instrument)	
Display magnification, vertical	0.1 to 5,000,000x, arbitrary values	
Display magnification, horizontal	0.1 to 5,000,000x, arbitrary values	

FORMTRACEPAK Surface roughness measurement/analysis specifications

Roughness standards compliant	JIS B0601:1982, JIS B0601:1994, JIS B0601:2013, JIS B0631, JIS B0671, ISO 4287, ISO 13565, ISO 21920, ISO 12085, ASME B46.1, VDA2006, VDA2007 (option)
Parameters	Ra, Rq, Sk, Ku, Rp, Rv, Ry, RyDIN, RzDIN, Rt, Rc, Rz, R3z, R3t, S, Δa, Δq, λa, λq, Lo, Ir, Rk, Rpk, Rvk, Mr1, Mr2, A1, A2, Sm, Pc, HSC, mr, mrd, δc, Vo, Rx, AR, R, NR, NCRX, CPM, SR, SAR, Wx, AW, W, Wte, NW, SW, SAW, Rz(l), Rdq, Rda, Rdt, Rdl, Rdr, Rml(c), Rmc(c), Rcm(p), Rdc, Rpkx, Rvkx, Rmrk1, Rmrk2, Rak1, Rak2, Rpt, Rvt, Rsmx, Rsmq, Rc, Rcx, Rcq (Area/height-related parameters can be analyzed with contour analysis commands)
Parameter pass/fail judgment methods	Average value, maximum value rule, 16% rule
Assessed profiles	Primary profile, Roughness profile, Filtered waviness profile, Waviness profile, Rolling circle waviness profile, Rolling circle center line waviness profile, Envelope residual profile, DF profile (defined by DIN4776/ISO13565), Roughness motif (total depth of waviness is displayed during motif evaluation)
Graph analysis display	Bearing area curve, amplitude distribution curve, power spectrum, autocorrelation, Walsh power spectrum, Walsh autocorrelation, peak height distribution, tilt angle distribution, parameter distribution (wear amount and overlap can be analyzed through area, etc., in contour analysis)
Data compensation	Least-squares line, R-surface compensation, ellipse compensation, parabola compensation, hyperbola compensation, conic compensation, polynomial compensation (automatic or arbitrary second- to seventh-degree)
Filter type	Gaussian, 2CRPC75, 2CRPC50, 2CR75, 2CR50, Robust Spline, Robust Gaussian, Generating circle
Cutoff	Cutoff wavelength (λc): 0.025, 0.08, 0.25, 0.8, 2.5, 8, 25, 80mm arbitrary Cutoff wavelength (λs): 0.8, 2.5, 8, 25, 80, 250, 800 μm arbitrary
Microscopic contour analysis	FORMTRACEPAK See "Operation processing" in the contour shape measurement/analysis specifications.
Statistical processing	Simplified statistical function
Measurement-assisting function (common to contour and roughness)	Peak/bottom detection (manual), ball measurement, workpiece identification function, leveling, perpendicular leveling, alignment, automatic measurement function for rounded surfaces (only during roughness measurement)
Measurement-assisting functions	Simple input using drawing symbols, reference length dialog box, N-item measurement function
Stylus calibration	Roughness standard samples, step standard samples *Calibration log stored in stylus, no upper limit on data quantity
Display magnification, vertical	0.1 to 5,000,000x, arbitrary values
Display magnification, horizontal	0.1 to 5,000,000x, arbitrary values
Supported languages	Japanese, English, German, French, Italian, Spanish, Polish, Hungarian, Swedish, Czech, Chinese (Simplified), Chinese (Traditional), Korean, Turkish, Portuguese, Russian, Dutch, Thai, Vietnamese

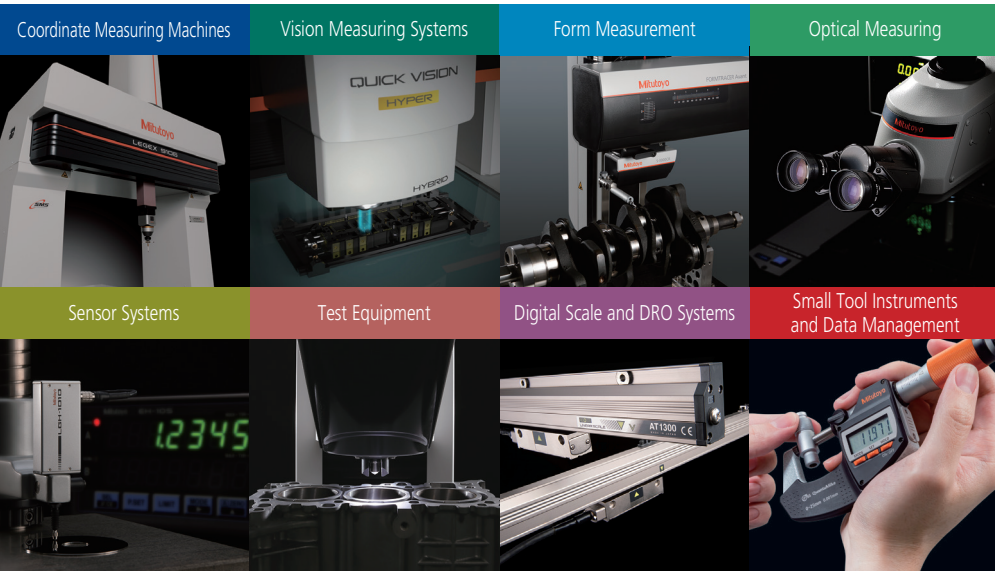
*Online help is in Japanese or English only

Supported models

FORMTRACEPAK Supported models*

Surface Roughness Measuring Instrument Surftrac	SJ-500P, SV-2100PC, FTA-S3000, SV-3000CNC
Contour Measuring Instrument Contracer	CV-2100, FTA-C3000, FTA-C4000
Surface Shape Measuring Instrument Formtracer	FTA-D3000, FTA-D4000, FTA-H3000, SV-C4500CNC, SV-C4500CNC HYBRID, CS-5000CNC/H5000CNC

*Consult the nearest Mitutoyo M³ Solution Center to find out whether support (retrofitting) is available for discontinued products.



Whatever your challenges are, Mitutoyo supports you from start to finish.

Mitutoyo is not only a manufacturer of top quality measuring products but one that also offers qualified support for the lifetime of the equipment, backed up by comprehensive services that ensure your staff can make the very best use of the investment.

Apart from the basics of calibration and repair, Mitutoyo offers product and metrology training, as well as IT support for the sophisticated software used in modern measuring technology. We can also design, build, test and deliver measuring solutions and even, if deemed cost-effective, take your critical measurement challenges in-house on a sub-contract basis.

My.Mitutoyo

Mitutoyo End User Portal
 Search for products, request a product quote, take online metrology courses, and much more. My.Mitutoyo.com puts everything Mitutoyo directly in front of you.



Find additional product literature and our product catalog

www.mitutoyo.com

Note: All information regarding our products, and in particular the illustrations, drawings, dimensional and performance data contained in this printed matter as well as other technical data are to be regarded as approximate average values. We therefore reserve the right to make changes to the corresponding designs. The stated standards, similar technical regulations, descriptions and illustrations of the products were valid at the time of printing. In addition, the latest applicable version of our General Trading Conditions will apply. Only quotations submitted by ourselves may be regarded as definitive. Specifications are subject to change without notice.

Mitutoyo products are subject to US Export Administration Regulations (EAR). Re-export or relocation of our products may require prior approval by an appropriate governing authority.

Trademarks and Registrations

Designations used by companies to distinguish their products are often claimed as trademarks. In all instances where Mitutoyo America Corporation is aware of a claim, the product names appear in initial capital or all capital letters. The appropriate companies should be contacted for more complete trademark and registration information.

Mitutoyo

Mitutoyo America Corporation
www.mitutoyo.com
 One Number to Serve You Better
 1-888-MITUTOYO (1-888-648-8869)

M³ Solution Centers:
 Aurora, Illinois (Headquarters)
 Boston, Massachusetts
 Charlotte, North Carolina
 Cincinnati, Ohio
 Detroit, Michigan
 Los Angeles, California
 Seattle, Washington
 Houston, Texas