

## QUICKTIP

## Self Check

Self Check performs a diagnostic test of the hearing aid system to ensure optimal performance of the hearing aid components including microphones, receiver and circuit. Self Check can be initiated by the hearing care professional within Pro Fit or by the user in My Starkey.

## Initiating Self Check within Pro Fit

A baseline will automatically be established for the hearing aids, as indicated by green check marks. [Fig. 1]  
Hearing care professionals can complete the Self Check diagnostic for their patient's hearing devices within Pro Fit.

- 1 Select **Self Check** from the **Flyout Menu** ≡.
- 2 Place hearing aids on a flat surface with the receivers facing up.
- 3 Reduce all sources of noise.
- 4 Click **Begin Test** to begin.
- 5 A brief, robust stimulus will play in each hearing aid.

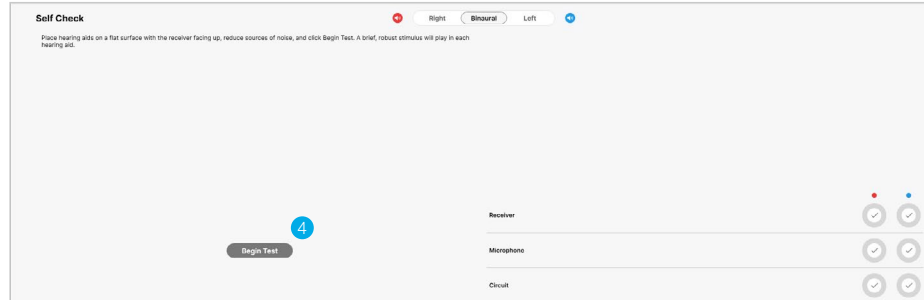


Figure 1

## Self Check Results

Once the test is complete, results for each hearing aid component display on the screen. Hover over the results for more information. [Fig. 2]

- (A) **Green:** Pass
- (B) **Yellow:** Not performing to baseline. Check component.
- (C) **Red:** Fail

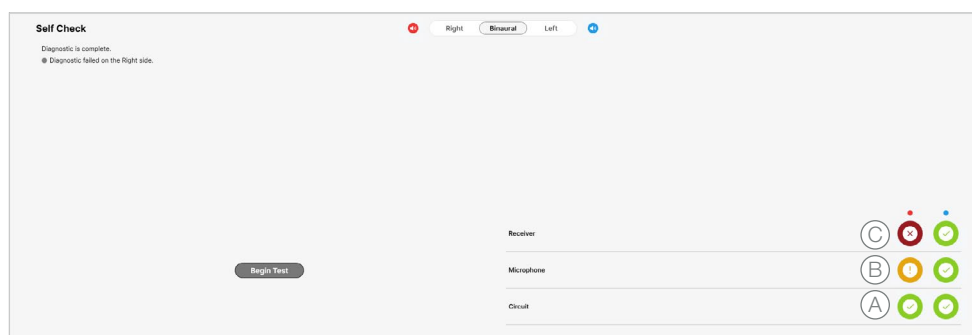


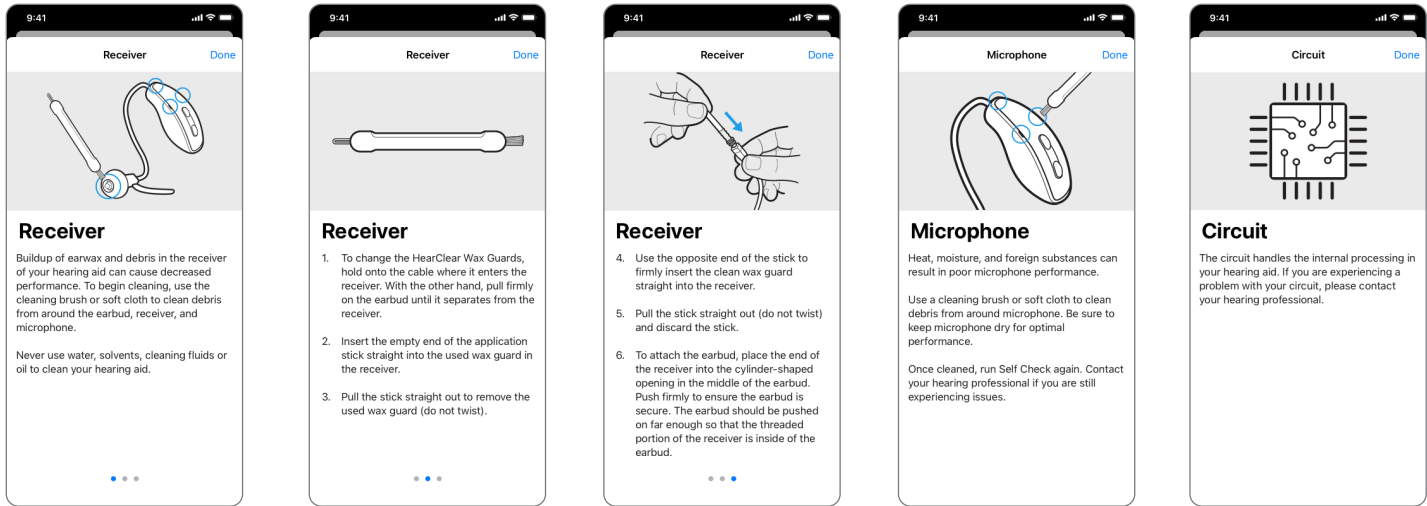
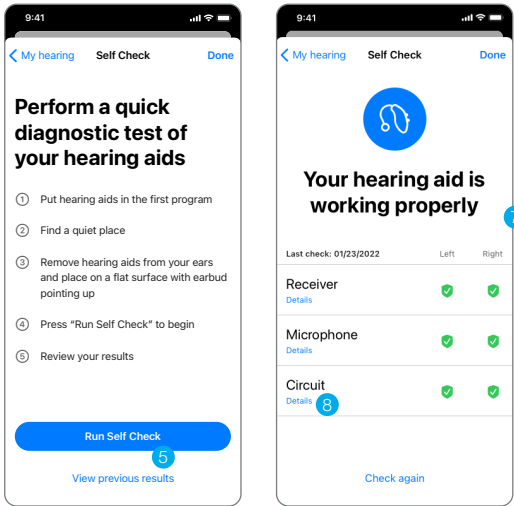
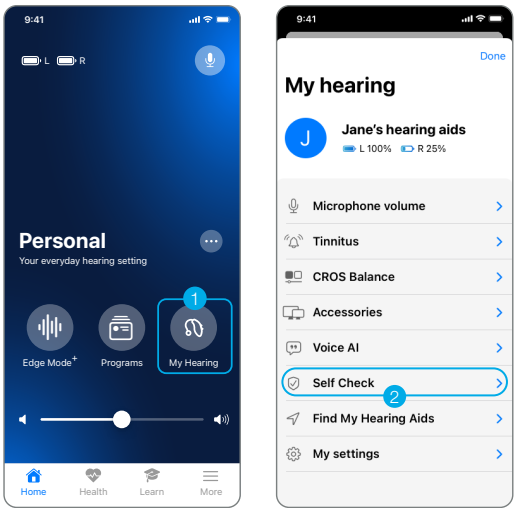
Figure 2

# Self Check in My Starkey

Self Check provides a quick, convenient way for patients to analyze their hearing aid system’s performance right from My Starkey.

## To initiate Self Check in My Starkey:

- 1 Tap **My Hearing**.
- 2 Tap **Self Check**.
- 3 Place hearing aids on a flat surface with the receivers facing up.
- 4 Reduce all sources of noise.
- 5 Select **Run Self Check**.
- 6 A short tone will play in each hearing aid.
- 7 Once the test is complete, results for each hearing aid component display on the screen.
- 8 Tap **Details** under each component.
- Component screen examples displayed below.*



Features may vary by country.

